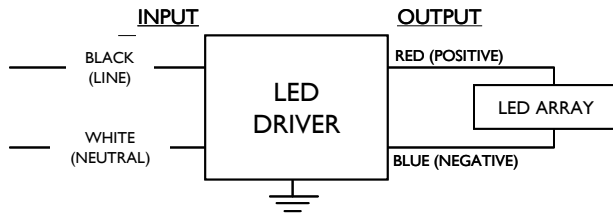


<b>LEDINTA1600C36FO</b>	
Brand Name	XITANIUM
Description	58W 1.6A 36V
Input Voltage	120~277
Input Frequency	50/60Hz
RoHS	Yes
Status	Active

Output Power (W)	Output Voltage (V)	Output Current (A)	Tcase Max	Input Current (A)	Max. Input Power (W)	Inrush Current (A <sub>pk</sub> /μs)	Max. THD (%)	Min. Power Factor	Surge Protection (KV)	Weight (Lbs)	Envir. Protection Rating
58	9~36	1.60	90°C	0.55@120V 0.25@277V	68	100/155	20	0.90	3.5	1.4/635	UL Dry & Damp

## Wiring Diagram



Input and output use lead-wires.  
Lead-wires are 18AWG 105C/600V solid copper

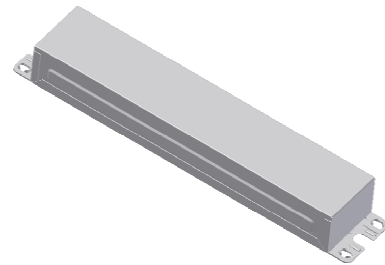
## Standard Lead Length

	in.	cm.
Black	9	22
White	9	22
Blue	26	66
Red	26	66
Gray		
Violet		

## Maximum Wiring Distance (at full load)

Wire Size (AWG)	Distance (feet)
26	4
24	7
22	11
20	17
18	27
16	43
14	69
12	105
10	179

## Enclosure



	in. (mm)
Case Length	8.34 (211.8)
Case Width	1.76 (42.5)
Case Height	1.1 (27.9)
Mounting Length	8.99 (228.4)
Mounting Width	1.22 (30.9)
Overall Length	9.45 (240)



UL Class 2  
E220165



Revised 03/02/2012

## PHILIPS LIGHTING N.A.

10275 WEST HIGGINS ROAD · ROSEMONT, IL 60018  
Tel: 800-322-2086 · Fax: 888-423-1882 · www.philips.com/advance  
Customer Support/Technical Service: 800-372-3331 · OEM Support: 866-915-5886

<b>LEDINTA1600C36FO</b>	
Brand Name	XITANIUM
Description	58W 1.6A 36V
Input Voltage	120~277
Input Frequency	50/60Hz
RoHS	Yes
Status	Active

## Installation & Application Notes:

### Section I – Physical Characteristics

- 1.1 LED Driver shall be installed inside an electrical enclosure
- 1.2 Wiring inside electrical enclosure shall comply with 600V/105°C rating or higher.

### Section II – Performance

- 2.1 LED Driver has Class A sound rating.
- 2.2 LED Driver has a minimum operating ambient temperature of -40°C.
- 2.3 LED Driver has a maximum life expectancy of 50,000 hours at Tcase of ≤ 80°C.
- 2.4 LED Driver has a maximum life expectancy of 100,000 hours at Tcase of ≤ 70°C.
- 2.5 LED Driver has a typical self rise of 30°C at maximum load in open air without heat sink.
- 2.6 LED Driver is certified by UL for use in a dry or damp location (Outdoor Type I).
- 2.7 LED Driver tolerates sustained open circuit and short circuit output conditions without damage.
- 2.8 LED Driver maximum allowable case temperature is 90°C – see product label for measurement location.
- 2.9 LED Driver reduces output power to LEDs if maximum allowable case temperature is exceeded.
- 2.10 LED Driver complies with FCC rules and regulations, as per Title 47 CFR Part 15 Non-Consumer (Class A).

### Section III – UL Conditions of Acceptability (File E220165)

When installed in the end product, consideration shall be given to the following:

- 3.1 These LED Drivers have been evaluated to comply with Class 2 output criteria.
- 3.2 These LED Drivers are only suitable for use in Dry and Damp locations.
- 3.3 These products are rated as follows:

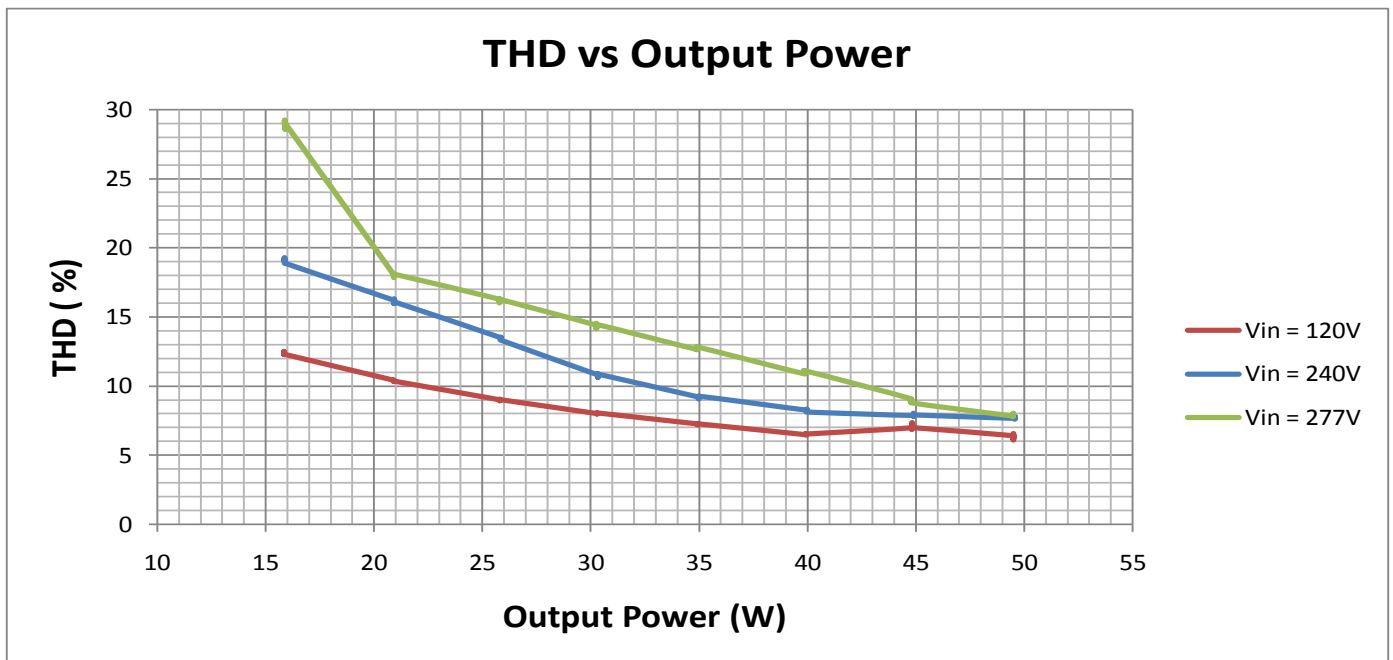
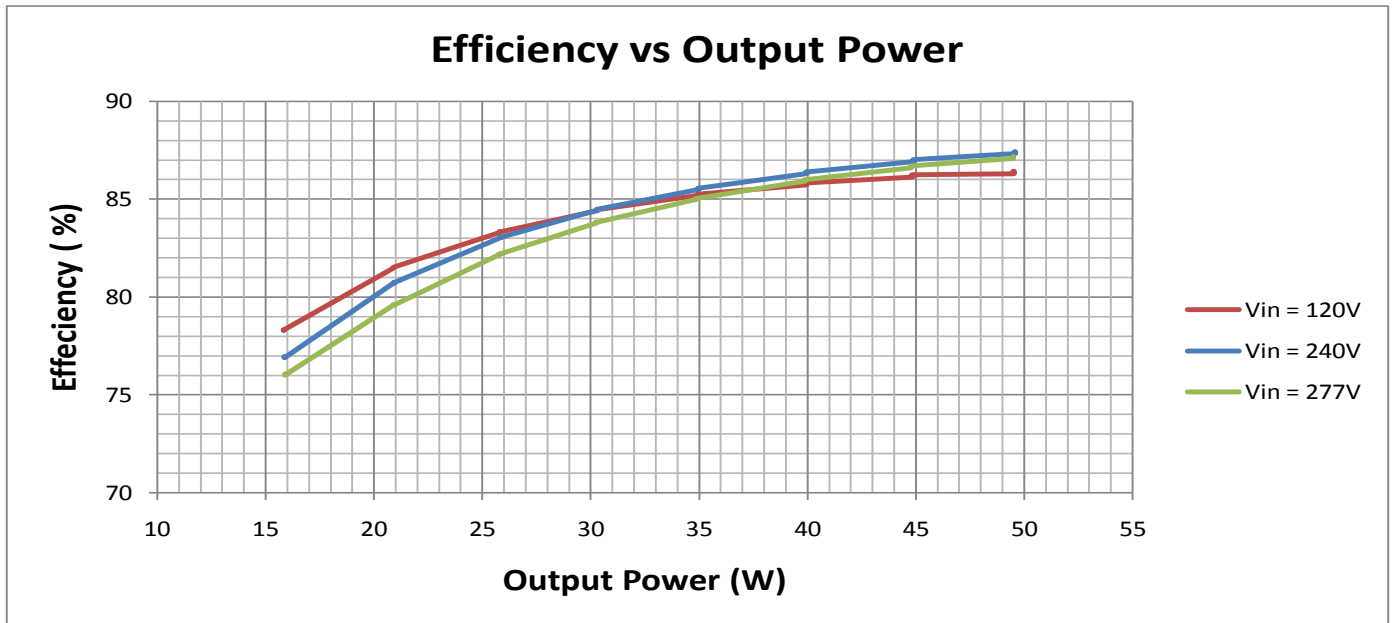
Model	Input, 60 Hz.			OUTPUT
	Volt/V	Amp/A	Power/W	V@Amperes DC
LEDINTA1600C36FO	120-277	0.55-0.25	58	36V and 1.6A *

(\* ) - For connection to LED array consisting of 58W maximum.

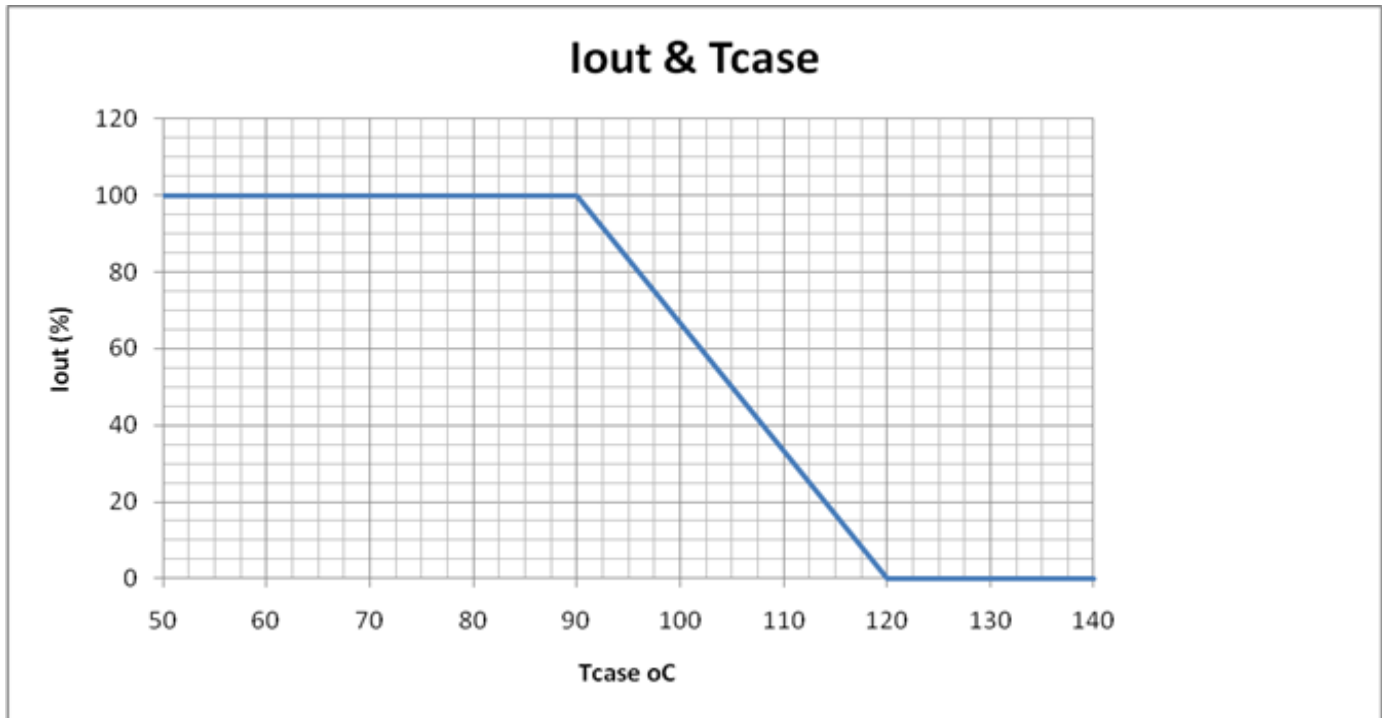
- 3.4 In the end product, power supply spacing to other heat producing components shall be minimum 4 inches spacing to sidewalls, and minimum 2 inches spacing to top of enclosure and mounted not closer than 1 in. end to end or 4 in. side to side from adjacent LED power supplies.
- 3.5 The units were submitted and tested for a maximum manufacturer's recommended Tc point described in the table below. If adjacent LED power supplies are spaced close than 1 in. end to end or 4 in. side to side, a temperature test shall be conducted in the end use product.

Model No.	Input Voltage, Hz	Max. Case @ Tc, °C
LEDINTA1600C36FO	120-277,60	90

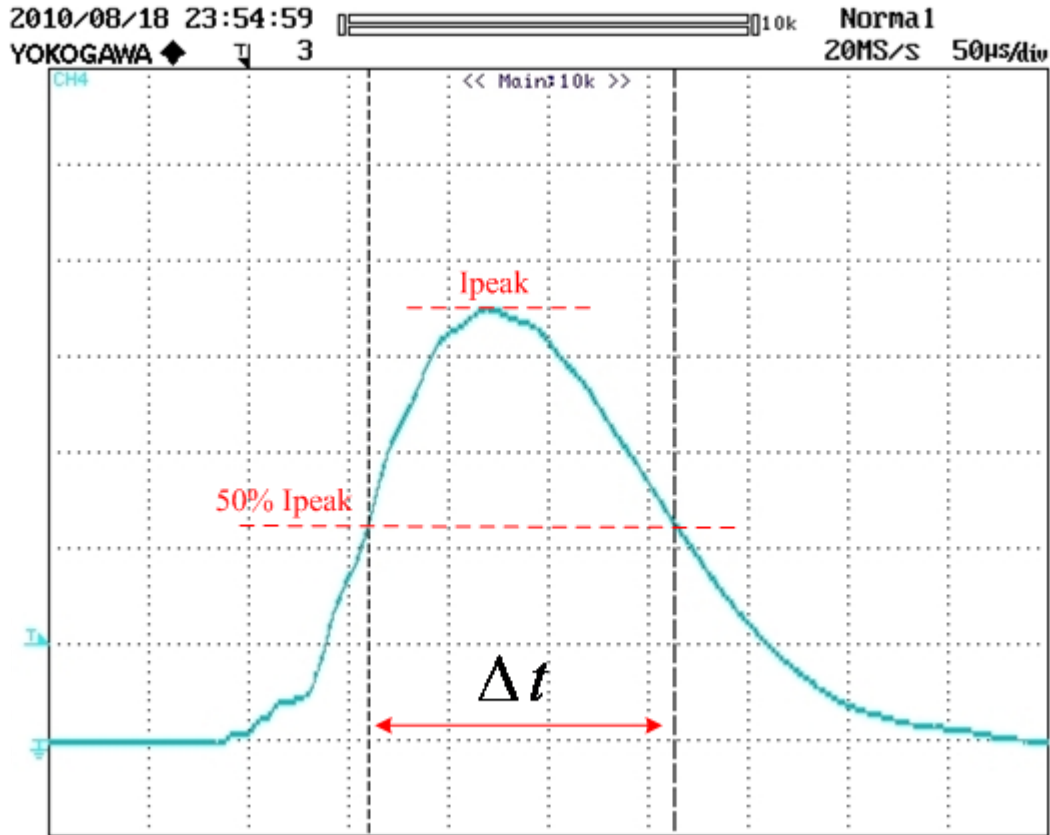
<b>LEDINTA1600C36FO</b>	
Brand Name	XITANIUM
Description	58W 1.6A 36V
Input Voltage	120~277
Input Frequency	50/60Hz
RoHS	Yes
Status	Active



<b>LEDINTA1600C36FO</b>	
Brand Name	XITANIUM
Description	58W 1.6A 36V
Input Voltage	120~277
Input Frequency	50/60Hz
RoHS	Yes
Status	Active

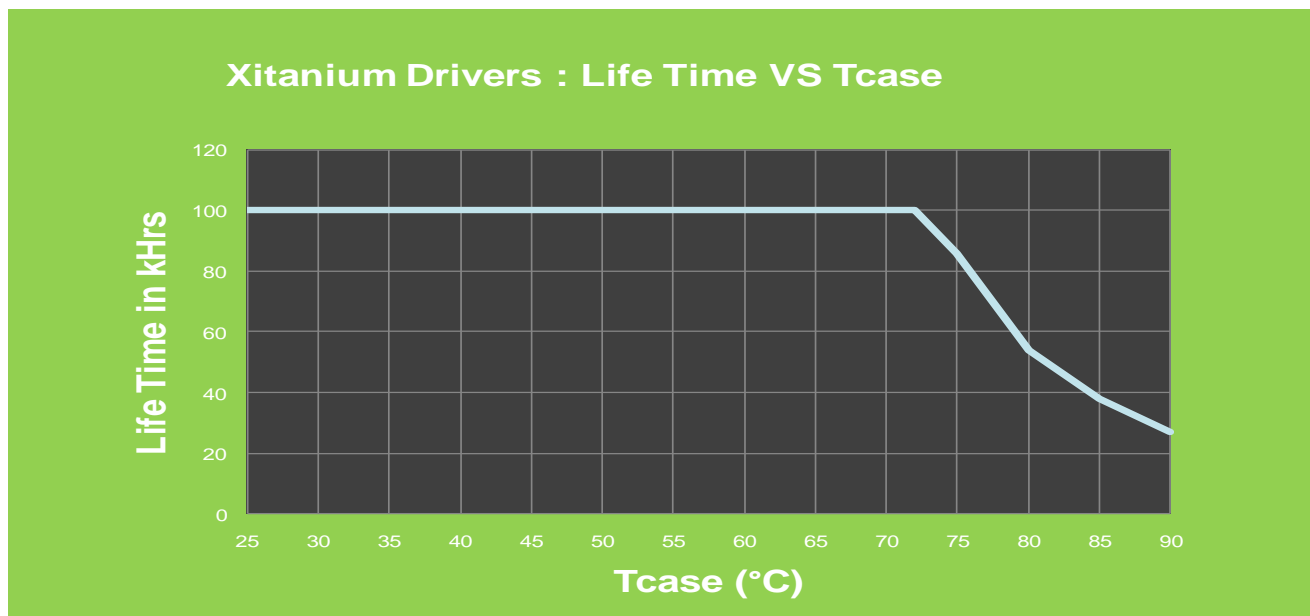


<b>LEDINTA1600C36FO</b>	
Brand Name	XITANIUM
Description	58W 1.6A 36V
Input Voltage	120~277
Input Frequency	50/60Hz
RoHS	Yes
Status	Active



Test Voltage	Ipeak [A]	50% Ipeak [A]	$\Delta t$ [uSec]
120	45	22.5	155
240	90	45	155
277	100	50	155

<b>LEDINTA1600C36FO</b>	
Brand Name	XITANIUM
Description	58W 1.6A 36V
Input Voltage	120~277
Input Frequency	50/60Hz
RoHS	Yes
Status	Active



**Revision History:**

Rev No.	Date	Description	Approval	Remarks
1.1	01/16/2012	* Add Envir. Protection Rating	N.T.	
1.2	03/02/2012	*Modify Part #(Remove Dashes)	N.T.	

Revised 03/02/2012