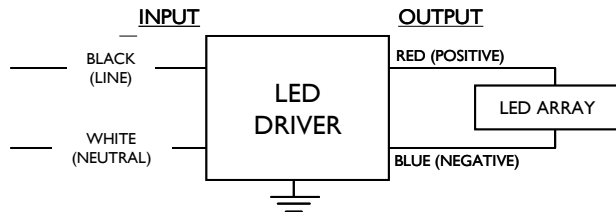


LEDINTA0012V50FO	
Brand Name	XITANIUM
Description	60W 12V 5.0A
Input Voltage	120~277
Input Frequency	50/60Hz
RoHS	Yes
Approbations	UL, CSA
Status	Active

Electrical Specifications

Output Power (W)	Output Voltage (V)	Output Current (A)	Tcase Max	Input Current at 120V (A)	Max. Input Power (W)	Inrush Current (A _{pk} /μs)	Max. THD (%)	Min. Power Factor	Surge Protection (KV)	Weight (Lbs)	Envir. Protection Rating
60	12	0.10~5.0	90°C	0.6	70	100/200	20	0.99	2.5	1.4/635	UL Dry & Damp

Wiring Diagram



Input and output use lead-wires.
Lead-wires are 18AWG 105C/600V solid copper

Standard Lead Length

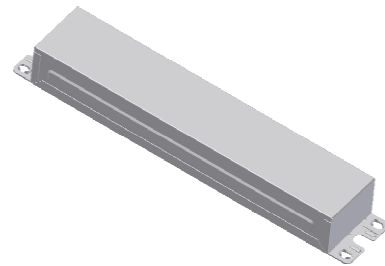
	in.	cm.
Black	9	22
White	9	22
Blue	26	66
Red	26	66
Gray		
Violet		

Maximum Wiring Distance (at full load)

Wire Size (AWG)	Distance (feet)
26	2
24	4
22	6
20	10
18	15
16	24
14	38
12	59
10	100

Revised 05/15/2012

Enclosure



	in. (mm)
Case Length	8.34 (211.8)
Case Width	1.76 (42.5)
Case Height	1.1 (27.9)
Mounting Length	8.99 (228.4)
Mounting Width	1.22 (30.9)
Overall Length	9.45 (240)



UL Class 2
E220165



7310_S-000
3426-32

PHILIPS LIGHTING ELECTRONICS N.A.

10275 WEST HIGGINS ROAD · ROSEMONT, IL 60018
Tel: 800-322-2086 · Fax: 888-423-1882 · www.philips.com/advance
Customer Support/Technical Service: 800-372-3331 · OEM Support: 866-915-5886

LEDINTA0012V50FO	
Brand Name	XITANIUM
Description	60W 12V 5.0A
Input Voltage	120~277
Input Frequency	50/60Hz
RoHS	Yes
Approbations	UL, CSA
Status	Active

Installation & Application Notes:

Section I – Physical Characteristics

- 1.1 LED Driver shall be installed inside an electrical enclosure
- 1.2 Wiring inside electrical enclosure shall comply with 600V/105°C rating or higher.

Section II – Performance

- 2.1 LED Driver is UL Class 2 power unit as per UL1310. It is also listed in the UL Sign Accessory Manual (UL SAM).
- 2.2 LED Driver has Class A sound rating.
- 2.3 LED Driver has a minimum operating ambient temperature of -40°C.
- 2.4 LED Driver has a 400 maximum switching cycle between -40°C to -20°C.
- 2.5 LED Driver has a life expectancy of 50,000 hours at Tcase of ≤ 80°C.
- 2.6 LED Driver has a life expectancy of 100,000 hours at Tcase of ≤ 70°C.
- 2.7 LED Driver has a typical self rise of 30°C at maximum load in open air without heat sink.
- 2.8 LED Driver is certified by UL for use in a dry or damp location (Outdoor Type I).
- 2.9 LED Driver tolerates sustained open circuit and short circuit output conditions without damage.
- 2.10 LED Driver maximum allowable case temperature is 90°C – see product label for measurement location.
- 2.11 LED Driver reduces output power to LEDs if maximum allowable case temperature is exceeded.
- 2.12 LED Driver has a failure rate of ≤ 0.01% per 1,000 hours.
- 2.13 LED Driver complies with FCC rules and regulations, as per Title 47 CFR Part 15 Non-Consumer (Class A).

Section III – UL Conditions of Acceptability (File E220165; Vol. 1; Sec. 3)

When installed in the end product, consideration shall be given to the following:

- 3.1 These LED Drivers have been evaluated to comply with Class 2 output criteria.
- 3.2 These Led Drivers are only suitable for use in Dry and Damp locations.
- 3.3 These products are rated as follows:

Model	Input, 60 Hz.			OUTPUT V and Amperes DC
	Volt/V	Amp/A	Power/W	
LEDINTA0012V50FO	120-277	0.60-0.29	60	12V and 5.0A(###)

(###) - For connection to LED array consisting of 60W maximum

- 3.4 In the end product, power supply spacing to other heat producing components shall be minimum 4 inches spacing to sidewalls, and minimum 2 inches spacing to top of enclosure and mounted not closer than 1 in. end to end or 4in. side to side from adjacent LED power supplies.
- 3.5 The units were submitted and tested for a maximum manufacturer’s recommended Tc point described in the table below. If adjacent LED power supplies are spaced closer then 1in. end to end or 4 in. side to side a temperature test shall be conducted in the end use product.

Model No.	Input Voltage, Hz	Max. Case @ Tc, °C	Ambient, °C (Reference only)(*)
LEDINTA0012V50FO	120-277,60	90	60.2/60.5

Revised 05/15/2012

LEDINTA0012V50FO	
Brand Name	XITANIUM
Description	60W 12V 5.0A
Input Voltage	120~277
Input Frequency	50/60Hz
RoHS	Yes
Approbations	UL, CSA
Status	Active

(*) - 120V/ 277V

Revision History:

Rev No.	Date	Description	Approval	Remarks
1.1	01/17/2012	* Add Envir. Protection Rating	N.T.	
2.1	03/02/2012	*Modify Part #(Remove Dashes)	N.T.	
3.1	04/06/2012	*Add Installation & Application Notes: Section II – 2.4: Max Switching Cycles	N.T.	
4.1	05/15/2012	* Add Approbations: UL, CSA	N.T.	

Revised 05/15/2012