



# Luminaire Smart Service Guide

US Service Smart and Spec Smart Product Portfolio  
Indoor - Updated January 2014

**PHILIPS**



# Philips Luminaire Smart Service Guide



Philips Lighting is delighted to announce that we are expanding our successful service program to better meet your need for predictable lead times of our luminaire products. The program started in July 2013 with all Lightolier branded Downlights, Accent/Track and Decorative Lighting and has been very well received. With this new January 2014 edition, the guide now includes all Philips Day-Brite, Chloride and Lightolier Indoor Luminaires.

The goal of our service program is to ensure we fully support your shelf stocking requirements and provide you with reliable leadtimes to address the demanding timelines of construction and retrofit lighting projects. This program allows you to select the product and corresponding lead time to meet the needs of your specific customer's project. We have developed the following categories:



- **Service Smart products** are in stock and will be shipped in 48hrs from our warehouses\*.
  - **Distributor Stock products** are a subset of the Service Smart items that should be maintained on distributor shelves at all times to manage everyday contractor demand.
- **Spec Smart products** will be assembled to order and ship within 2 weeks from our factories\*.

\*Service promise is calculated from the time the order is entered until it is shipped.

In this new Smart Service Guide, you will find all Service Smart and Spec Smart items, stock locations, as well as an indication of our recommended distributor shelf stock items. This new guide combines our previous Customer Service Offering and the indoor luminaires section of our Distributor Luminaire Stock Guide. Please refer to the separate digital Distributor Luminaire Outdoor Stock Guide for information on outdoor distributor shelf stock items until the full outdoor portfolio is rolled into the Smart Service Guide in the future.

## Our commitment to you

- Our delivery promise is backed by a significant investment in finished goods and component inventory. If any unforeseen issues arise or if order volume exceeds maximum order quantity, we will do our best to meet your needs and confirm an acceptable ship date.
- Standard lead time products will ship within 6 weeks, while lead times for special, made to order and custom configured products can be confirmed by contacting the order desk.
- Lead time is from the time the order is entered and received by our warehouse. Our goal is to enter orders within 1 business day of receipt.
- To enable fast order entry, orders must be received with complete and correct catalog numbers and reference to the source of pricing (i.e. quote number or pricing program). It is recommended that you reference **“Smart Guide”** on your orders for product in this guide to speed the order entry process.
- In order to avoid delays, it is recommended that stock orders be “stand alone” so that they may be shipped within the promised time-frame.
- To ensure we satisfy all our customers optimally and meet the committed lead times, maximum order quantities may apply. If the order exceeds the set threshold, Philips will contact you to work out a feasible schedule for your large order: It is always advised to work with your Philips representative to give advance notice of your large order.



In case you have questions, please contact your sales representative or Customer Service.

**Philips Contact Center: 1-855-486-2216**

## Warehouse legend and stock availability

Philips Lighting maintains stock levels of our luminaires at multiple warehouses. Our warehouses are located in multiple regions across the US in order to provide our customers with quick access to the inventory you require. Look for the code in the “Stocked In” column of this Smart Service Guide.

### Warehouse legend:

C = Carrollton, Texas

F = Fontana, California

N = Norwich, Connecticut

### Terms and Conditions

Freight Terms: Individual order minimum of \$1,000;

\$100 shipping and handling fee for orders less than \$1,000.

1% 10th Prox 2nd, Net 25th Prox 2nd for Stock Orders

1% 10th Prox, Net 25th Prox for Drop Ship/Project Business



Track

# Accent/Track Lighting



## Alcyon LED

UPC CODE	CATALOG NUMBER	DESCRIPTION	SERVICE SMART	SPEC SMART	STOCKED IN
662057437828	LLA0130WH	Alcyon LED Small Cylinder 3000K White		✓	
662057437910	LLA1130WH	Alcyon LED Medium Cylinder 3000K White	✓		C,N,F
662057437927	LLA1130BK	Alcyon LED Medium Cylinder 3000K Black	✓		C,N,F
662057287096	LLA01RNF	Alcyon LED Small Cylinder Narrow Flood Reflector		✓	
662057287171	LLA01RNF SOL	Alcyon LED Small Cylinder Narrow Flood Reflector w/Solite		✓	
662057287126	LLA11RNF	Alcyon LED Medium Cylinder Narrow Flood Reflector		✓	
662057287201	LLA11RNF SOL	Alcyon LED Medium Cylinder Narrow Flood Reflector w/Solite		✓	



## Alcyon LED Vertical

UPC CODE	CATALOG NUMBER	DESCRIPTION	SERVICE SMART	SPEC SMART	STOCKED IN
662057535630	LLAV0130WH	Alcyon LED Vertical Cylinder 3000K 600L White	✓		C,N,F
662057535647	LLAV0130BK	Alcyon LED Vertical Cylinder 3000K 600L Black		✓	
662057542034	LLAV1130WH	Alcyon LED Vertical Cylinder 3000K 1000L White	✓		C,N,F
662057542041	LLAV1130BK	Alcyon LED Vertical Cylinder 3000K 1000L Black		✓	
662057542058	LLAV1130AL	Alcyon LED Vertical Cylinder 3000K 1000L AL		✓	
662057896298	LLAV1230WH	Alcyon LED Vertical Cylinder 3000K 2000L White	✓		C,N,F
662057896304	LLAV1230BK	Alcyon LED Vertical Cylinder 3000K 2000L Black		✓	
662057896809	LLAV11RF	Alcyon LED Vertical 600/1000 Cylinder Reflector Narrow Spot	✓		C,N,F
662057896816	LLAV11RNF	Alcyon LED Vertical 600/1000 Cylinder Reflector Spot	✓		C,N,F
662057896793	LLAV11RNS	Alcyon LED Vertical 600/1000 Cylinder Reflector Narrow Flood	✓		C,N,F
662057897110	LLAV11RS	Alcyon LED Vertical 600/1000 Cylinder Reflector Flood	✓		C,N,F
662057896755	LLAV12RS	Alcyon LED Vertical 2000 Cylinder Reflector Narrow Spot	✓		C,N,F
662057896786	LLAV12RNS	Alcyon LED Vertical 2000 Cylinder Reflector Spot	✓		C,N,F
662057896762	LLAV12RNF	Alcyon LED Vertical 2000 Cylinder Reflector Narrow Flood	✓		C,N,F
662057896779	LLAV12RF	Alcyon LED Vertical 2000 Cylinder Reflector Flood	✓		C,N,F

\*C= Carrollton, Texas    F= Fontana, California    N= Norwich, Connecticut

“•” beside a blue catalog number indicates item is a recommended distributor shelf stock item.

Pictures are representative of product categories and may not illustrate the exact products listed on the pages of this guide.

Product information may change without notice. Contact your local Philips sales representative for additional product information.



## Alcyon LED Recessed

Frames					
UPC CODE	CATALOG NUMBER	DESCRIPTION	SERVICE SMART	SPEC SMART	STOCKED IN
N/A	LLAVRM11H1120	Recessed Alcyon LED FIK 120V 1Head 600/1000Lm	✓		C,N,F
N/A	LLAVRM11H1277	Recessed Alcyon LED FIK 277V 1Head 600/1000Lm	✓		C,N,F
N/A	LLAVRM11H2120	Recessed Alcyon LED FIK 120V 2Head 600/1000Lm	✓		C,N,F
N/A	LLAVRM11H2277	Recessed Alcyon LED FIK 277V 2Head 600/1000Lm	✓		C,N,F
N/A	LLAVRM11H3120	Recessed Alcyon LED FIK 120V 3Head 600/1000Lm	✓		C,N,F
N/A	LLAVRM11H3277	Recessed Alcyon LED FIK 277V 3Head 600/1000Lm	✓		C,N,F
N/A	LLAVRM11H4120	Recessed Alcyon LED FIK 120V 4Head 600/1000Lm	✓		C,N,F
N/A	LLAVRM11H4277	Recessed Alcyon LED FIK 277V 4Head 600/1000Lm	✓		C,N,F
N/A	LLAVRM12H1120	Recessed Alcyon LED FIK 120V 1Head 2000Lm	✓		C,N,F
N/A	LLAVRM12H1277	Recessed Alcyon LED FIK 277V 1Head 2000Lm	✓		C,N,F
N/A	LLAVRM12H2120	Recessed Alcyon LED FIK 120V 2Head 2000Lm	✓		C,N,F
N/A	LLAVRM12H2277	Recessed Alcyon LED FIK 277V 2Head 2000Lm	✓		C,N,F
N/A	LLAVRM12H3120	Recessed Alcyon LED FIK 120V 3Head 2000Lm	✓		C,N,F
N/A	LLAVRM12H3277	Recessed Alcyon LED FIK 277V 3Head 2000Lm	✓		C,N,F
N/A	LLAVRM12H4120	Recessed Alcyon LED FIK 120V 4Head 2000Lm		✓	C,N,F
N/A	LLAVRM12H4277	Recessed Alcyon LED FIK 277V 4Head 2000Lm		✓	C,N,F

Trims-Light Engines					
UPC CODE	CATALOG NUMBER	DESCRIPTION	SERVICE SMART	SPEC SMART	STOCKED IN
N/A	LLAVRMWH0130H3	Recessed Alcyon LED White 3000K 3Head 600Lm w/Trim		✓	
N/A	LLAVRMBK0130H3	Recessed Alcyon LED Black 3000K 3Head 600Lm w/Trim		✓	
N/A	LLAVRMWH1130H1	Recessed Alcyon LED White 3000K 1Head 1000Lm w/Trim		✓	
N/A	LLAVRMBK1130H1	Recessed Alcyon LED Black 3000K 1Head 1000Lm w/Trim		✓	
N/A	LLAVRMWH1130H2	Recessed Alcyon LED White 3000K 2Head 1000Lm w/Trim		✓	
N/A	LLAVRMBK1130H2	Recessed Alcyon LED Black 3000K 2Head 1000Lm w/Trim		✓	

## Alcyon LED Vertical Accessories

UPC CODE	CATALOG NUMBER	DESCRIPTION	SERVICE SMART	SPEC SMART	STOCKED IN
662057898582	LLAV11FR	Alcyon LED Frosted Etched film 3" 600/1000lm	✓		C,N,F
662057898520	LLAV11LS	Alcyon LED Linear Spread film 3" 600/1000lm	✓		C,N,F
662057898568	LLAV11SF	Alcyon LED Soft Focus film 3" 600/1000lm	✓		C,N,F
662057898544	LLAV11SY	Alcyon LED SyStem Spread film 3" 600/1000lm	✓		C,N,F
662057898599	LLAV12FR	Alcyon LED Frosted Etched film 4" 2000lm	✓		C,N,F
662057898537	LLAV12LS	Alcyon LED Linear Spread film 4" 2000lm	✓		C,N,F
662057898575	LLAV12SF	Alcyon LED Soft Focus film 4" 2000lm	✓		C,N,F
662057898551	LLAV12SY	Alcyon LED SyStem Spread film 4" 2000lm	✓		C,N,F
662057898247	LLAV11AHWH	Alcyon LED Vertical Accent 600/1000 Cylinder Acc. Holder White	✓		C,N,F
662057898254	LLAV11AHBK	Alcyon LED Vertical Accent 600/1000 Cylinder Acc. Holder Black	✓		C,N,F
662057898261	LLAV11AHAL	Alcyon LED Vertical Accent 600/1000 Cylinder Acc. Holder ALU	✓		C,N,F
662057898278	LLAV12AHWH	Alcyon LED Vertical Accent 2000Cylinder Acc. Holder White	✓		C,N,F
662057898285	LLAV12AHBK	Alcyon LED Vertical Accent 2000Cylinder Acc. Holder Black	✓		C,N,F
662057898292	LLAV12AHAL	Alcyon LED Vertical Accent 2000Cylinder Acc. Holder ALU	✓		C,N,F

\*C= Carrollton, Texas    F= Fontana, California    N= Norwich, Connecticut

“•” beside a blue catalog number indicates item is a recommended distributor shelf stock item.

Pictures are representative of product categories and may not illustrate the exact products listed on the pages of this guide.

Product information may change without notice. Contact your local Philips sales representative for additional product information.



## Spot LED

UPC CODE	CATALOG NUMBER	DESCRIPTION	SERVICE SMART	SPEC SMART	STOCKED IN
662057650371	LLABS30RSWH	Spot LED Small Spot 3000K White		✓	
662057651026	LLABS30RNFWH	Spot LED Small Narrow Flood 3000K White		✓	
662057651057	LLABS30RFWH	Spot LED Small Flood 3000K White		✓	
662057651033	LLABS30RNFVK	Spot LED Small Narrow Flood 3000K Black		✓	
662057576107	LLAB030RSWH	Spot LED Spot 3000K White		✓	
662057576121	LLAB030RSBK	Spot LED Spot 3000K Black		✓	
662057577548	LLAB030RNFWH •	Spot LED Narrow Flood 3000K White	✓	✓	C,N,F
662057577500	LLAB030RFWH	Spot LED Flood 3000K White		✓	
662057577555	LLAB030RNFVK •	Spot LED Narrow Flood 3000K Black	✓		C,N,F
662057577517	LLAB030RFVK	Spot LED Flood 3000K Black		✓	
662057577562	LLAB030RNFAL	Spot LED Narrow Flood 3000K Aluminum		✓	
662057609607	LLAB130RSWH	Spot LED Large Spot 3000K White		✓	
662057609638	LLAB130RNFWH •	Spot LED Large Narrow Flood 3000K White	✓		C,N,F
662057610702	LLAB130RFWH •	Spot LED Large Flood 3000K White	✓		C,N,F
662057609614	LLAB130RSBK	Spot LED Large Spot 3000K Black		✓	
662057609645	LLAB130RNFVK •	Spot LED Large Narrow Flood 3000K Black	✓		C,N,F
662057610719	LLAB130RFVK	Spot LED Large Flood 3000K Black		✓	
999999141163	23SNT6BK	SpotLED Snoot for 1000/2000 Lm Black		✓	
662057657080	LLAB1AHWH	Spot LED Large Spot ACC Holder; White		✓	



## Spot LED Recessed

Trim sections					
UPC CODE	CATALOG NUMBER	DESCRIPTION	SERVICE SMART	SPEC SMART	STOCKED IN
662057772028	LLABR17WHWH	Recessed Spotled Trim Section, 17" Length		✓	
662057772042	LLABR24WHWH	Recessed Spotled Trim Section, 24" Length		✓	
Frame Kits and Light Engine					
UPC CODE	CATALOG NUMBER	DESCRIPTION	SERVICE SMART	SPEC SMART	STOCKED IN
662057877624	LLABR9WH030H1RSVA	Spot LED RM, LE&FIK, 1 head, 1000lm, White, 3000K, Spot, 120/277		✓	
662057877730	LLABR9WH030H1RNFVA	Spot LED RM, LE&FIK, 1 head, 1000lm, White, 3000K, Narrow Flood, 120/277	✓		C,N,F
662057877891	LLABR9WH030H1RFVA	Spot LED RM, LE&FIK, 1 head, 1000lm, White, 3000K, Flood, 120/277		✓	
662057877761	LLABR9BK030H1RNFVA	Spot LED RM, LE&FIK, 1 head, 1000lm, Black, 3000K, Narrow Flood, 120/277		✓	
662057877921	LLABR9BK030H1RFVA	Spot LED RM, LE&FIK, 1 head, 1000lm, Black, 3000K, Flood, 120/277		✓	
662057877990	LLABR17WH030H2RSVA	Spot LED RM, LE&FIK, 2 head, 1000lm, White, 3000K, Spot, 120/277		✓	
662057878126	LLABR17WH030H2RNFVA	Spot LED RM, LE&FIK, 2 head, 1000lm, White, 3000K, Narrow Flood, 120/277	✓		C,N,F
662057878201	LLABR17WH030H2RFVA	Spot LED RM, LE&FIK, 2 head, 1000lm, White, 3000K, Flood, 120/277		✓	
662057878003	LLABR17BK030H2RSVA	Spot LED RM, LE&FIK, 2 head, 1000lm, Black, 3000K, Spot, 120/277		✓	
662057878133	LLABR17BK030H2RNFVA	Spot LED RM, LE&FIK, 2 head, 1000lm, Black, 3000K, Narrow Flood, 120/277		✓	
662057878287	LLABR24WH030H3RSVA	Spot LED RM, LE&FIK, 3 head, 1000lm, White, 3000K, Spot, 120/277		✓	
662057878362	LLABR24WH030H3RNFVA	Spot LED RM, LE&FIK, 3 head, 1000lm, White, 3000K, Narrow Flood, 120/277	✓		C,N,F
662057878508	LLABR24WH030H3RFVA	Spot LED RM, LE&FIK, 3 head, 1000lm, White, 3000K, Flood, 120/277		✓	
662057878294	LLABR24BK030H3RSVA	Spot LED RM, LE&FIK, 3 head, 1000lm, Black, 3000K, Spot, 120/277		✓	
662057878379	LLABR24BK030H3RNFVA	Spot LED RM, LE&FIK, 3 head, 1000lm, Black, 3000K, Narrow Flood, 120/277		✓	
662057878522	LLABR24BK030H3RFVA	Spot LED RM, LE&FIK, 3 head, 1000lm, Black, 3000K, Flood, 120/277		✓	

\*C= Carrollton, Texas    F= Fontana, California    N= Norwich, Connecticut

"•" beside a blue catalog number indicates item is a recommended distributor shelf stock item.

Pictures are representative of product categories and may not illustrate the exact products listed on the pages of this guide.

Product information may change without notice. Contact your local Philips sales representative for additional product information.



## Spot LED Recessed (continued)

UPC CODE	CATALOG NUMBER	DESCRIPTION	SERVICE SMART	SPEC SMART	STOCKED IN
662057877679	LLABR9WH130H1RSVA	Spot LED RM, LE&FIK, 1 head, 2000lm, White, 3000K, Spot, 120/277		✓	
662057877938	LLABR9WH130H1RFVA	Spot LED RM, LE&FIK, 1 head, 2000lm, White, 3000K, Flood, 120/277		✓	
662057877686	LLABR9BK130H1RSVA	Spot LED RM, LE&FIK, 1 head, 2000lm, Black, 3000K, Spot, 120/277	✓		C,N,F
662057877785	LLABR9BK130H1RNFVA	Spot LED RM, LE&FIK, 1 head, 2000lm, Black, 3000K, Narrow Flood, 120/277		✓	
662057877945	LLABR9BK130H1RFVA	Spot LED RM, LE&FIK, 1 head, 2000lm, Black, 3000K, Flood, 120/277		✓	
662057878010	LLABR17WH130H2RSVA	Spot LED RM, LE&FIK, 2 head, 2000lm, White, 3000K, Spot, 120/277		✓	
662057878140	LLABR17WH130H2RNFVA	Spot LED RM, LE&FIK, 2 head, 2000lm, White, 3000K, Narrow Flood, 120/277	✓		C,N,F
662057878225	LLABR17WH130H2RFVA	Spot LED RM, LE&FIK, 2 head, 2000lm, White, 3000K, Flood, 120/277		✓	
662057878027	LLABR17BK130H2RSVA	Spot LED RM, LE&FIK, 2 head, 2000lm, Black, 3000K, Spot, 120/277		✓	
662057878157	LLABR17BK130H2RNFVA	Spot LED RM, LE&FIK, 2 head, 2000lm, Black, 3000K, Narrow Flood, 120/277		✓	
662057878232	LLABR17BK130H2RFVA	Spot LED RM, LE&FIK, 2 head, 2000lm, Black, 3000K, Flood, 120/277		✓	
662057878300	LLABR24WH130H3RSVA	Spot LED RM, LE&FIK, 3 head, 2000lm, White, 3000K, Spot, 120/277		✓	
662057878386	LLABR24WH130H3RNFVA	Spot LED RM, LE&FIK, 3 head, 2000lm, White, 3000K, Narrow Flood, 120/277	✓		C,N,F
662057878539	LLABR24WH130H3RFVA	Spot LED RM, LE&FIK, 3 head, 2000lm, White, 3000K, Flood, 120/277		✓	
662057878317	LLABR24BK130H3RSVA	Spot LED RM, LE&FIK, 3 head, 2000lm, Black, 3000K, Spot, 120/277		✓	
662057878393	LLABR24BK130H3RNFVA	Spot LED RM, LE&FIK, 3 head, 2000lm, Black, 3000K, Narrow Flood, 120/277		✓	
662057878546	LLABR24BK130H3RFVA	Spot LED RM, LE&FIK, 3 head, 2000lm, Black, 3000K, Flood, 120/277		✓	



### Mini LED Micro

UPC CODE	CATALOG NUMBER	DESCRIPTION	SERVICE SMART	SPEC SMART	STOCKED IN
662057497938	LLAV0030WH	Vertical LED Micro Cylinder 3000K White		✓	



### Mini HID

UPC CODE	CATALOG NUMBER	DESCRIPTION	SERVICE SMART	SPEC SMART	STOCKED IN
662057596518	8109WH	Mini HID Cylinder 20WT4 GU6.5 TAL Matte White		✓	
662057596495	8109AL	Mini HID Cylinder 20WT4 GU6.5 TAL Aluminum		✓	
662057596457	24MHT4RNF	Reflector GU6.5 and PGJ5 Narrow Flood Clear		✓	



### Alcyon

UPC CODE	CATALOG NUMBER	DESCRIPTION	SERVICE SMART	SPEC SMART	STOCKED IN
784197483722	<b>22OR6WH</b> •	Alcyon MR16 Open Ring White	✓		C,N,F
784197483739	22or6BK	Alcyon MR16 Open Ring Black		✓	
784197483753	22GR6WH	Alcyon MR16 Glass Ring White		✓	
784197483692	22GC6WH	Alcyon MR16 Glass Cylinder White		✓	
784197483630	<b>22SS6WH</b> •	Alcyon MR16 Enclosed Step Spot White	✓		C,N,F
784197483647	22SS6BK	Alcyon MR16 Enclosed Step Spot Black		✓	
784197483784	22MW6WH	Alcyon MR16 Mini Round Wall Washer White		✓	
784197483661	<b>22MC6WH</b> •	Alcyon MR16 Mini Cylinder White	✓		C,N,F
784197483678	22MC6BK	Alcyon MR16 Mini Cylinder Black		✓	
784197483685	22MC6AL	Alcyon MR16 Mini Cylinder Aluminum		✓	
784197483845	22SS2WH	Alcyon PAR20 Enclosed Step Spot White		✓	
784197483876	22SS3WH	Alcyon PAR30 Enclosed Step Spot White		✓	
784197483883	22SS3BK	Alcyon PAR30 Enclosed Step Spot Black		✓	

\*C= Carrollton, Texas    F= Fontana, California    N= Norwich, Connecticut

“•” beside a blue catalog number indicates item is a recommended distributor shelf stock item.

Pictures are representative of product categories and may not illustrate the exact products listed on the pages of this guide.

Product information may change without notice. Contact your local Philips sales representative for additional product information.



## SofTech

UPC CODE	CATALOG NUMBER	DESCRIPTION	SERVICE SMART	SPEC SMART	STOCKED IN
784197526306	6276BWH •	Soft Tech Spot MR 16 Bi-Pin Matte White	✓		C,N,F
784197526313	6276BBK	Soft Tech Spot MR 16 Bi-Pin Matte Black		✓	
784197842000	8420WH	Soft-Edge SpotS PAR20 Matte White		✓	
784197842024	8420BK •	Soft-Edge SpotS PAR20 Matte Black	✓		C,N,F



## Mini Universal

UPC CODE	CATALOG NUMBER	DESCRIPTION	SERVICE SMART	SPEC SMART	STOCKED IN
784197902100	9021WH •	Mini Universal 250W Max Matte White	✓		C,N,F
784197902117	9021BK •	Mini Universal 250W Max Matte Black	✓		C,N,F



## Rings

UPC CODE	CATALOG NUMBER	DESCRIPTION	SERVICE SMART	SPEC SMART	STOCKED IN
784197627805	6278WH	120V Halogen Spot PAR20 Ring Matte White		✓	
784197762827	6282	120V Halogen Spot PAR30 Ring Matte White		✓	
784197762841	6284	PAR Ring, PAR38 250W Max. White		✓	
784197140496	9023WH •	Budget PAR30 Ring Matte White	✓		C,N,F
784197140410	9023BK •	Budget PAR30 Ring Matte Black	✓		C,N,F
784197407346	9023AL	Budget PAR30 Ring Satin Aluminum Finish		✓	
784197902230	9022BK •	Budget PAR38 Ring Matte Black	✓		C,N,F
784197902209	9022WH •	Budget PAR38 Ring Matte White	✓		C,N,F
662057884714	9023LRNFWH	BUDGET PAR30 RING MAT WH W/ PHILIPS LED LAMP narrow flood	✓		
662057884721	9023LRFWH	BUDGET PAR30 RING MAT WH W/ PHILIPS LED LAMP flood	✓		
662057884783	9022LRNFWH	BUDGET PAR38 RING MAT WH W/ PHILIPS LED LAMP Narrow Flood	✓		
662057884806	9022LRFWH	BUDGET PAR38 RING MAT WH W/ PHILIPS LED LAMP Flood	✓		
662057905921	9030NAL	Lytespan Gimbal Ring PAR30 AL		✓	
662057905907	9030NBK	Lytespan Gimbal Ring PAR30 BK	✓		
662057905914	9030NWH	Lytespan Gimbal Ring PAR30 WH	✓		
662057905952	9038NAL	Lytespan Gimbal Ring PAR38 AL		✓	
662057905938	9038NBK	Lytespan Gimbal Ring PAR38 BK	✓		
662057905945	9038NWH	Lytespan Gimbal Ring PAR38 WH	✓		
662057905976	9030NLRNFWH	Lytespan Gimbal Ring PAR30 w/Philips LED Retail Lamp RNF WH	✓		
662057905969	9030NLRNFBK	Lytespan Gimbal Ring PAR30 w/Philips LED Retail Lamp RNF BK	✓		
662057905990	9030NLRFWH	Lytespan Gimbal Ring PAR30 w/Philips LED Retail Lamp RF WH	✓	✓	
662057905983	9038NLRNFBK	Lytespan Gimbal Ring PAR38 w/Philips LED Retail Lamp RNF BK		✓	
662057906010	9038NLRNFWH	Lytespan Gimbal Ring PAR38 w/Philips LED Retail Lamp RNF WH	✓	✓	
662057906034	9038NLRFWH	Lytespan Gimbal Ring PAR38 w/Philips LED Retail Lamp RF WH		✓	

\*C= Carrollton, Texas    F= Fontana, California    N= Norwich, Connecticut

“•” beside a blue catalog number indicates item is a recommended distributor shelf stock item.

Pictures are representative of product categories and may not illustrate the exact products listed on the pages of this guide.

Product information may change without notice. Contact your local Philips sales representative for additional product information.



## ParTech

UPC CODE	CATALOG NUMBER	DESCRIPTION	SERVICE SMART	SPEC SMART	STOCKED IN
784197820107	8201WH •	Low Profile Universal LyteSpot/White	✓		C,N,F
784197820114	8201BK •	Low Profile Universal LyteSpot/Black	✓		C,N,F
784197820206	8202WH	Hinged Universal LyteSpot/White		✓	
784197820213	8202BK	Hinged Universal LyteSpot/Black		✓	
784197823504	8235WH	PAR30 Cone Shade only/White		✓	
784197823511	8235BK	PAR30 Cone Shade only/Black		✓	
784197823627	8236BK	PAR30 Cylinder Shade only/Black		✓	
784197823825	8238BK	PAR-Tech PAR30 Ring Shade Matte Black		✓	



## Lasso

UPC CODE	CATALOG NUMBER	DESCRIPTION	SERVICE SMART	SPEC SMART	STOCKED IN
784197825706	8257WH	PAR20 WIRE Ring LyteSpot/White		✓	



## Miniforms

UPC CODE	CATALOG NUMBER	DESCRIPTION	SERVICE SMART	SPEC SMART	STOCKED IN
784197917142	9173BBK	Low Volt MR16 BI PIN Cylinder Matte Black		✓	
784197917128	9173BWH	Low Volt MR16 BI PIN Cylinder Matte White		✓	
784197251093	9175NWH	Miniforms MR16 Shallow Ring-White		✓	



## PowerWash

UPC CODE	CATALOG NUMBER	DESCRIPTION	SERVICE SMART	SPEC SMART	STOCKED IN
784197302498	9276WH	2 X 24W T5 HO Flood 2' Matte White		✓	



## Tangent

UPC CODE	CATALOG NUMBER	DESCRIPTION	SERVICE SMART	SPEC SMART	STOCKED IN
784197555696	FX16C	Tangent Mini Cylinder 12V MR16		✓	
784197556013	FX25	Tangent Surface Mount Anchors (5 Pack)		✓	

\*C= Carrollton, Texas    F= Fontana, California    N= Norwich, Connecticut

“•” beside a blue catalog number indicates item is a recommended distributor shelf stock item.

Pictures are representative of product categories and may not illustrate the exact products listed on the pages of this guide.

Product information may change without notice. Contact your local Philips sales representative for additional product information.

## Accessories

UPC CODE	CATALOG NUMBER	DESCRIPTION	SERVICE SMART	SPEC SMART	STOCKED IN
784197116170	AF2AS	Spread Lens Asymmetrical 5X55 DEG Beam Spread		✓	
784197477998	AF2FR	Frosted Softening Lens, 2" Diameter		✓	
784197282424	AF2SF	Solite Diffusion Lens, 2" Diameter	✓		C,N,F
784197116163	AF2SY	Spread Lens Symmetrical 55 DEG Beam		✓	
784197115975	AF4AS	Spread Lens for ADJ 6"&7" HSNL 5X55 DEG		✓	
784197162696	AL25HC	2.5" Hex Cell Louver		✓	
784197116118	AL2HC	2" Hex Cell Louver		✓	
784197162931	AL3HC	3 3/4" Hex Cell Louver		✓	



## Basic Track & Accessories

UPC CODE	CATALOG NUMBER	DESCRIPTION	SERVICE SMART	SPEC SMART	STOCKED IN
784197594183	6000NBK ●	2'IND Basic Track Black	✓		C,N,F
784197594190	6000NWH ●	2'IND Basic Track White	✓		C,N,F
784197594206	6001NBK ●	4'IND Basic Track Black	✓		C,N,F
784197594213	6001NWH ●	4'IND Basic Track White	✓		C,N,F
784197539801	6002NAL	8' IND Basic Metallic Aluminum		✓	
784197594220	6002NBK ●	8'IND Basic Track Black	✓		C,N,F
784197594237	6002NWH ●	8'IND Basic Track White	✓		C,N,F
784197594244	6003NBK	8'Join Basic Track MT Black		✓	
784197594251	6003NWH ●	8'Join Basic Track White	✓		C,N,F
784197539771	6004NAL	4' IND Basic Track w/o Live End Aluminum		✓	
784197594268	6004NBK ●	4'IND Basic Track w/o Live End Black	✓		C,N,F
784197594275	6004NWH ●	4'IND Basic Track w/o Live End White	✓		C,N,F
662057572185	6006NBK ●	6' Basic Plain Track w/o Live End Black	✓		C,N,F
662057572208	6006NWH	6' Basic Plain Track w/o Live End White		✓	
784197539733	6008NAL	8' IND Basic Track w/o Live End Aluminum		✓	
784197594282	6008NBK ●	8'IND Basic Track w/o Live End Black	✓		C,N,F
784197594299	6008NWH ●	8'IND Basic Track w/o Live End White	✓		C,N,F
784197594541	6046NBK ●	Basic PWR Extension Connector Black	✓		C,N,F
784197594558	6046NWH	Basic PWR Extension Connector White		✓	
784197539757	6048NAL	Basic Live End Aluminum		✓	
784197594589	6048NBK ●	Basic Live End Black	✓		C,N,F
784197594596	6048NWH ●	Basic Live End White	✓		C,N,F
784197539474	6049NAL	Basic Mini Coupler Aluminum		✓	
784197594565	6049NBK ●	Basic Mini Coupler Black	✓		C,N,F
784197594572	6049NWH ●	Basic Mini Coupler White	✓		C,N,F
784197594466	6050NBK	Basic "L" Connector Black		✓	
784197594473	6050NWH ●	Basic "L" Connector White	✓		C,N,F
784197594480	6051NBK ●	Basic "T" Connector Black	✓		C,N,F
784197594497	6051NWH ●	Basic "T" Connector White	✓		C,N,F
784197594503	6052NBK ●	Basic "X" Connector Black	✓		C,N,F
784197594527	6053NBK	Basic Variable Angle Connector Black		✓	
784197594329	6054NBK	Basic In-Line Connector Black		✓	
784197594350	6054NWH ●	Basic In-Line Connector White	✓		C,N,F
784197606015	6060BK ●	End Feed Canopy Black	✓		C,N,F
784197606008	6060WH ●	End Feed Canopy White	✓		C,N,F
784197606114	6061BK ●	Floating Canopy Black	✓		C,N,F
784197606107	6061WH	Floating Canopy White		✓	
784197606312	6063BK	Floating Power Feed Black		✓	
784197606305	6063WH	Floating Power Feed White		✓	
784197607401	6074WH	LyteSpot Extension Wand 18"White		✓	

\*C= Carrollton, Texas    F= Fontana, California    N= Norwich, Connecticut

"●" beside a blue catalog number indicates item is a recommended distributor shelf stock item.

Pictures are representative of product categories and may not illustrate the exact products listed on the pages of this guide.

Product information may change without notice. Contact your local Philips sales representative for additional product information.



## Radius Track & Accessories

UPC CODE	CATALOG NUMBER	DESCRIPTION	SERVICE SMART	SPEC SMART	STOCKED IN
784197910129	9102WH	Radius 2' Plain Track Matte White		✓	
784197910181	9104BK	Radius 4' Plain Track Matte Black		✓	
784197910167	9104WH	Radius 4' Plain Track Matte White		✓	
784197910228	9106BK	Radius 6' Plain Track Matte Black	✓		C,N,F
784197910204	9106WH	Radius 6' Plain Track Matte White		✓	
784197910266	9108BK	Radius 8' Plain Track Matte Black		✓	
784197910242	9108WH	Radius 8' Plain Track Matte White	✓		C,N,F
784197000523	9147BK	Radius Surface Feed ConnectorTR Matte Black	✓		C,N,F
784197910303	9148BK	Radius Live End Feed Matte Black		✓	
784197910280	9148WH	Radius Live End Feed Matte White	✓		C,N,F
784197910341	9149BK	Radius Mini Coupler Matte Black		✓	
784197910327	9149WH	Radius Mini Coupler Matte White	✓		C,N,F
784197910389	9150BK	Radius Flush Non-Feed Connector COMB L or NL	✓		C,N,F
784197910365	9150WH	Radius Flush Non-Feed Connector COMB L or NL	✓		C,N,F
784197170400	9151BK	Radius Feed "T" Connector Matte Black	✓		C,N,F
784197170394	9151WH	Radius Feed "T" Connector Matte White		✓	
784197136864	9155BK	Radius Feed Connector COMB L or In-Line Matte Black	✓		C,N,F
784197136857	9155WH	Radius Feed Connector COMB L or In-Line Matte White		✓	
784197910501	9160BK	Radius Live End Canopy Matte Black	✓		C,N,F
784197910488	9160WH	Radius Live End Canopy Matte White		✓	
784197910563	9163WH	Radius Saddle Canopy Matte White		✓	
784197364069	9188WH	Radius T-Bar Clip, Regressed (Set of 9)		✓	
784197369446	9189WH	Radius T-Bar Clip, Flat, (Set of 9)		✓	



## Advent Track & Accessories

UPC CODE	CATALOG NUMBER	DESCRIPTION	SERVICE SMART	SPEC SMART	STOCKED IN
784197572860	6101NBK	4' IND Advent Track Black		✓	
784197572877	6101NWH	4' IND Advent Track White		✓	
784197572891	6102NBK	8' IND Advent Track Black		✓	
784197572907	6102NWH	8' IND Advent Track White	✓		C,N,F
784197572921	6103NB	8' Join Advent Track Black		✓	
784197572938	6103NWH	8' Join Advent Track White	✓		C,N,F
784197572952	6104NBK	4' 2-Circuit Track w/o Live End Black	✓		C,N,F
784197572969	6104NWH	4' 2-Circuit Track w/o Live End White		✓	
784197572983	6108NBK	8' 2 Circuit Track w/o Live End Black		✓	
784197572990	6108NWH	8' 2 Circuit Track w/o Live End White	✓		C,N,F
784197573195	6146NBK	Conduit Continuation Kit/2 CIRC/Black	✓		C,N,F
784197573201	6146NWH	Conduit Continuation Kit/2 CIRC/White	✓		C,N,F
784197573621	6148NBK	Advent Live End Black		✓	
784197573256	6148NWH	Advent Live End White	✓		C,N,F
784197573225	6149NBK	Advent Mini Coupler Black		✓	
784197573232	6149NWH	Advent Mini Coupler White		✓	
784197573089	6150NBK	Advent "L" Connector Black	✓		C,N,F

\*C= Carrollton, Texas    F= Fontana, California    N= Norwich, Connecticut

“•” beside a blue catalog number indicates item is a recommended distributor shelf stock item.

Pictures are representative of product categories and may not illustrate the exact products listed on the pages of this guide.

Product information may change without notice. Contact your local Philips sales representative for additional product information.

## Advent Track & Accessories (continued)

784197573096	6150NWH	Advent "L" Connector White		✓	
784197573119	6151NBK	Advent "T" Connector Black	✓		C,N,F
784197573126	6151NWH	Advent "T" Connector White	✓		C,N,F
784197573638	6152NBK	Advent "X" Connector Black	✓		C,N,F
784197573140	6152NWH	Advent "X" Connector White	✓		C,N,F
784197573164	6153NBK	Advent Variable Angle Connector Black		✓	
784197573171	6153NWH	Advent Variable Angle Connector White		✓	
784197573058	6154NBK	Advent In-Line Connector Black		✓	
784197573065	6154NWH	Advent In-Line Connector White	✓		C,N,F



## PowerTrip

UPC CODE	CATALOG NUMBER	DESCRIPTION	SERVICE SMART	SPEC SMART	STOCKED IN
784197469931	6099BK	PowerTrip, Basic, Live End Canopy, Black		✓	
784197469924	6099WH	PowerTrip, Basic, Live End Canopy, White		✓	
784197531362	PLD120BK	PowerTrip New Design, Plug-In Breaker		✓	
784197531379	PLD120WH	PowerTrip New Design, Plug-In Breaker		✓	
784197531522	PLD360BK	PowerTrip New Design, Plug-In Breaker		✓	
784197531577	PLD600BK	PowerTrip New Design, Plug-In Breaker		✓	
784197531584	PLD600WH	PowerTrip New Design, Plug-In Breaker		✓	



## Track Accessories

UPC CODE	CATALOG NUMBER	DESCRIPTION	SERVICE SMART	SPEC SMART	STOCKED IN
784197608507	6085	White Lytespan Convenience OUTLET	✓		C,N,F
784197515553	6170BK •	Rectangular Monopoint, Matte Black		✓	
784197515546	6170WH	Rectangular Monopoint, Matte White		✓	
784197619015	6190BK	Monopoint Black	✓		C,N,F
784197619022	6190WH •	Monopoint White	✓		C,N,F
784197272227	7516 •	8' Recessed Housing for Basic and Advent Track		✓	
784197272258	7517	Splice Box/End Housing		✓	
784197274269	7584	Track/18 Stem Kit/White		✓	
784197277116	7681	48" Stem Black		✓	
784197274320	7586	Stem Mounting Kit/48"L		✓	
784197758905	7589BK	Track Attachment Fitting Black	✓		C,N,F
784197274627	7596	Track/Surface RACEWAY Adapter		✓	
784197002305	7599	Track/1 D Pendant Adapter/White		✓	
784197012113	7662	Accessory Holder for MR16		✓	
784197858308	8583	PAR30 Accessory Holder for Cone/Cylinder		✓	
784197635749	56657	CLP Grid Ceiling Black		✓	
784197020064	6087	REG Panel MTG Clips for Track LTG (9Clip/Box)		✓	
784197608903	6089	9/16&15/16 Grid CLNG Clip Kit (9Clip/Box)		✓	
784197608903	6089	9/16&15/16 Grid CLNG Clip Kit (9Clip/Box)	✓		C,N,F

\*C= Carrollton, Texas    F= Fontana, California    N= Norwich, Connecticut

A large dot "•" beside a blue catalog number indicates item is a suggested stock item.

Pictures are representative of product categories and may not illustrate the exact products listed on the pages of this guide.

Product information may change without notice. Contact your local Philips sales representative for additional product information.



# Downlighting

---

# Lytecaster Downlighting



## Corepro Downlight LED

UPC CODE	CATALOG NUMBER	DESCRIPTION	SERVICE SMART	SPEC SMART	STOCKED IN
662057878959	CP430K6 ●	4" Corepro LED Downlight Retrofit Kit 600 LM 30K 120V	✓		C,N,F
662057878959	CP630K10 ●	6" Corepro LED Downlight Retrofit Kit 1000 LM 30K 120V	✓		C,N,F
662057878928	CP630K6 ●	6" Corepro LED Downlight Retrofit Kit 600 LM 30K 120V	✓		C,N,F



## 5" Lytening LED

UPC CODE	CATALOG NUMBER	DESCRIPTION	SERVICE SMART	SPEC SMART	STOCKED IN
<b>Frames</b>					
662057784618	1004ICLED ●	5" Lytening LED New Construction IC & Non-IC Housing Screw	✓		C,N,F
662057784625	1004ICNLED ●	5" Lytening LED New Construction IC & Non-IC Housing Nail	✓		C,N,F
<b>Trims</b>					
662057788517	1076WHL27K ●	5" Baffle White LED 2700K 650LM	✓		C,N,F
662057788524	1076WHL30K ●	5" Baffle White LED 3000K 650LM	✓		C,N,F
662057788531	1076WHL35K	5" Baffle White LED 3500K 650LM		✓	
662057794396	LARFA ●	Lytecaster Incandescent TO LED Retrofit Adaptor	✓		C,N,F



## 5" LED Lamp-in-the-Box

UPC CODE	CATALOG NUMBER	DESCRIPTION	SERVICE SMART	SPEC SMART	STOCKED IN
<b>Frames</b>					
662057884684	1076WHBR30D ●	1076WH 5" White Baffle Trim with Philips BR30 DIM LED Lamp	✓		C,N,F
662057884707	1076WHBR30ND ●	1076WH 5" White Baffle Trim with Philips BR30 Non-DIM LED Lamp	✓		C,N,F



## 5" Xceed LED Round

UPC CODE	CATALOG NUMBER	DESCRIPTION	SERVICE SMART	SPEC SMART	STOCKED IN
<b>Frames</b>					
662057482811	1050LRN06D1	Xceed LED 5" Round IC 600LM Frame DIM 120V		✓	
662057482828	1050LRN06D1N	Xceed LED 5" Round IC 600LM Frame DIM 120V Nail		✓	
662057482613	1050LRN09D1 ●	Xceed LED 5" Round IC 900LM Frame DIM 120V	✓		C,N,F
662057482804	1050LRN09D1N ●	Xceed LED 5" Round IC 900LM Frame DIM 120V Nail	✓		C,N,F
<b>Trims</b>					
662057483153	1050LRN0627	Xceed LED 5" Round Light Engine 600LM 2700K		✓	
662057483146	1050LRN0635	Xceed LED 5" Round Light Engine 600LM 3500K		✓	
662057482880	1050LRN0927 ●	Xceed LED 5" Round Light Engine 900LM 2700K	✓		C,N,F
662057483139	1050LRN0935 ●	Xceed LED 5" Round Light Engine 600LM 3500K	✓		C,N,F
662057483535	1050LRNDLCDP	Xceed LED 5" Round Downlight Clear Diffuse		✓	
662057483504	1050LRNDLCDW ●	Xceed LED 5" Round Downlight Clear Diffuse	✓		C,N,F
662057483511	1050LRNDLWB ●	Xceed LED 5" Round Downlight White Baffle	✓		C,N,F

\*C= Carrollton, Texas    F= Fontana, California    N= Norwich, Connecticut

"●" beside a blue catalog number indicates item is a recommended distributor shelf stock item.

Pictures are representative of product categories and may not illustrate the exact products listed on the pages of this guide.

Product information may change without notice. Contact your local Philips sales representative for additional product information.





## 5" Xceed LED Square

UPC CODE	CATALOG NUMBER	DESCRIPTION	SERVICE SMART	SPEC SMART	STOCKED IN
<b>Frames</b>					
662057482835	1050LSQ09D1	Xceed LED 5" Square IC 900LM Frame DIM 120V		✓	
<b>Trims</b>					
662057483160	1050LSQ0927	Xceed LED 5" Square Light Engine 900LM 2700K		✓	
662057483177	1050LSQ0935	Xceed LED 5" Square Light Engine 600LM 3500K		✓	
662057483627	1050LSQDLCDP	Xceed LED 5" Square Downlight Clear Diffuse		✓	
662057483610	1050LSQDLCDW	Xceed LED 5" Square Downlight Clear Diffuse		✓	



## 5" Uniframe LED

UPC CODE	CATALOG NUMBER	DESCRIPTION	SERVICE SMART	SPEC SMART	STOCKED IN
662057383668	<b>1001LED09N271</b> •	5" Uniframe LED New Construction Non-IC Frame 900LM 2700K 120V	✓		C,N,F
662057383699	1001LED09N27D1	5" Uniframe LED New Construction Non-IC Frame Dimming 900LM 2700K 120V		✓	
662057383743	1001LED09N351	5" Uniframe LED New Construction Non-IC Frame 900LM 3500K 120V		✓	
662057383750	<b>1001LED09N352</b> •	5" Uniframe LED New Construction Non-IC Frame 900LM 3500K 277V	✓		C,N,F
662057543772	1001LED15N27D1	5" Uniframe LED New Construction Non-IC Frame Dimming 1500LM 2700K 120V		✓	
662057543970	1001LED15N35D1	5" Uniframe LED New Construction Non-IC Frame Dimming 1500LM 3500K 120V		✓	



## 6 3/4" Uniframe LED

UPC CODE	CATALOG NUMBER	DESCRIPTION	SERVICE SMART	SPEC SMART	STOCKED IN
662057383446	1101LED09N271	6 3/4" Uniframe LED New Construction Non-IC Frame 900LM 2700K 120V		✓	
662057462905	1101LED09N271EM	6 3/4" Uniframe LED New Construction Non-IC Frame 900LM 2700K 120V EM		✓	
662057383460	1101LED09N272	6 3/4" Uniframe LED New Construction Non-IC Frame 900LM 2700K 277V		✓	
662057383484	1101LED09N27D1	6 3/4" Uniframe LED New Construction Non-IC Frame Dimming 900LM 2700K 120V		✓	
662057441108	<b>1101LED09N351</b> •	6 3/4" Uniframe LED New Construction Non-IC Frame 900LM 3500K 120V	✓		C,N,F
662057462950	1101LED09N351EM	6 3/4" Uniframe LED New Construction Non-IC Frame 900LM 3500K 120V EM		✓	
662057383538	<b>1101LED09N352</b> •	6 3/4" Uniframe LED New Construction Non-IC Frame 900LM 3500K 277V	✓		C,N,F
662057462967	1101LED09N352EM	6 3/4" Uniframe LED New Construction Non-IC Frame 900LM 3500K 277V EM		✓	
662057383545	1101LED09N35D1	6 3/4" Uniframe LED New Construction Non-IC Frame Dimming 900LM 3500K 120V		✓	
662057383644	1101LED09N35D2	6 3/4" Uniframe LED New Construction Non-IC Frame Dimming 900LM 3500K 277V		✓	
662057544083	1101LED15N27D1	6 3/4" Uniframe LED New Construction Non-IC Frame Dimming 1500LM 2700K 120V		✓	
662057544120	1101LED15N35D1	6 3/4" Uniframe LED New Construction Non-IC Frame Dimming 1500LM 3500K 120V		✓	
662057544144	1101LED15N35D2	6 3/4" Uniframe LED New Construction Non-IC Frame Dimming 1500LM 3500K 277V		✓	



## Retrofit Kit Uniframe LED

UPC CODE	CATALOG NUMBER	DESCRIPTION	SERVICE SMART	SPEC SMART	STOCKED IN
662057264370	L56LED09S27D1	Uniframe LED Retrofit Kit 900LM 2700K Dimming 120V		✓	

\*C= Carrollton, Texas    F= Fontana, California    N= Norwich, Connecticut

“•” beside a blue catalog number indicates item is a recommended distributor shelf stock item.

Pictures are representative of product categories and may not illustrate the exact products listed on the pages of this guide.

Product information may change without notice. Contact your local Philips sales representative for additional product information.



## 5" Xceed Round CFL

UPC CODE	CATALOG NUMBER	DESCRIPTION	SERVICE SMART	SPEC SMART	STOCKED IN
<b>Frames</b>					
662057038476	1050RN18ESN	Xceed CFL 5" Round Frame IC Airseal 18W 27K 120V Energy Star 120V Nail		✓	
662057038551	1050RN26CMU	Xceed CFL 5" Round Frame Non-IC 26W 27K 120-277V Screw		✓	
662057038568	1050RN26ES	Xceed CFL 5" Round Frame IC Airseal 26W 27K 120V Energy Star 120V Screw		✓	
<b>Trims</b>					
662057038889	1050RNDLCDW	Xceed CFL 5" Round Downlight Clear Diffuse Trim		✓	
662057038902	1050RNDLWB	Xceed CFL 5" Round Downlight White Baffle Trim		✓	



## 6 3/4" Low Profile CFL

UPC CODE	CATALOG NUMBER	DESCRIPTION	SERVICE SMART	SPEC SMART	STOCKED IN
<b>Frames</b>					
784197285456	1102T13U	6-3/4" Low Profile Non-IC Frame CFL 2X13W 120-277V		✓	
784197266189	1102T26U	6-3/4" Low Profile Non-IC Frame CFL 2X26W 120-277V		✓	
<b>Trims</b>					
784197111311	1113TCL	6-3/4" Low Profile CFL Cone Specular Clear Trim		✓	
784197112608	1126T	6-3/4" Low Profile CFL Fresnel Lens White SPLAY Trim		✓	



## 3 3/4" Uniframe CFL

UPC CODE	CATALOG NUMBER	DESCRIPTION	SERVICE SMART	SPEC SMART	STOCKED IN
<b>Frames</b>					
784197545659	2001F18U	3 3/4" Uniframe Non-IC 18W CFL 120/277V		✓	
<b>Trims</b>					
784197546311	2001CL	3-3/4" Performance CFL Vertical Open Reflector Trim Specular Clear		✓	



## 5" Uniframe CFL

UPC CODE	CATALOG NUMBER	DESCRIPTION	SERVICE SMART	SPEC SMART	STOCKED IN
<b>Frames</b>					
784197545642	1001F13U	5" Uniframe Non-IC 13W CFL 120/277V		✓	
784197545635	1001F18U	5" Uniframe Non-IC 18W CFL 120/277V		✓	
784197545598	1001F26U	5" Uniframe Non-IC 26W CFL 120/277V		✓	
<b>Trims</b>					
784197546472	1001CD	5" Performance CFL Vertical Open Reflector Trim CD		✓	
784197546465	1001CL	5" Performance CFL Vertical Open Reflector Trim CL		✓	
784197546557	1001HCL	5" Performance CFL Horizontal Open Reflector Trim CL		✓	

\***C**= Carrollton, Texas    **F**= Fontana, California    **N**= Norwich, Connecticut

"•" beside a blue catalog number indicates item is a recommended distributor shelf stock item.

Pictures are representative of product categories and may not illustrate the exact products listed on the pages of this guide.

Product information may change without notice. Contact your local Philips sales representative for additional product information.



## 6 3/4" Uniframe CFL

UPC CODE	CATALOG NUMBER	DESCRIPTION	SERVICE SMART	SPEC SMART	STOCKED IN
<b>Frames</b>					
784197545673	1101F18U	6 3/4" Uniframe Non-IC 18W CFL 120/277V		✓	
784197577018	1101F2642ICU	6 3/4" Lytening ICX Airseal CFL 26-32-42W, 120/277V Screw		✓	
784197545499	<b>1101F2642U</b> •	6 3/4" Uniframe Non-IC 26-32-42W CFL 120/277V	✓		C,N,F
784197545406	1101F2642UEM	6 3/4" Uniframe 26-42W Emergency Pack		✓	
784197545451	1101FD2642M7U	6 3/4" Uniframe 26-42W MARK7 Universal		✓	
784197545475	1101FD2642MX1	6 3/4" Uniframe 26-42W 120V MARKX		✓	
784197545390	1101FR2642U	6 3/4" Uniframe Non-IC Remodeler 26-32-42W CFL 120/277V		✓	
<b>Trims</b>					
784197546069	<b>1101CD</b> •	6 3/4" Performance CFL Vertical Open Reflector Trim Clear Diffused	✓		C,N,F
784197546052	<b>1101CL</b> •	6 3/4" Performance CFL Vertical Open Reflector Trim Specular Clear	✓		C,N,F
784197973094	<b>1101HCD</b> •	6 3/4" Performance CFL Horizontal Open Reflector Trim Clear Diffused	✓		C,N,F
784197546144	<b>1101HCL</b> •	6 3/4" Performance CFL Horizontal Open Reflector Trim Specular Clear	✓		C,N,F
784197546205	1101HCLC	6 3/4" Performance CFL Horizontal Clear Lens Specular Clear		✓	
784197546175	1101HCLSW	6 3/4" Performance CFL Single Wall Wash Horizontal Specular Clear		✓	



## 3 3/4" Lytecaster Incandescent

UPC CODE	CATALOG NUMBER	DESCRIPTION	SERVICE SMART	SPEC SMART	STOCKED IN
<b>Frames</b>					
784197200022	<b>2000AIC</b> •	3 3/4" Incandescent Lytecaster IC Airseal Frame	✓		C,N,F
784197200015	<b>2000IC</b> •	3 3/4" Incandescent Lytecaster IC Frame	✓		C,N,F
784197200060	2000P1	3 3/4" Incandescent Lytecaster Non-IC Frame with Box for Adjustable Accent		✓	
784197146658	<b>2002P1</b> •	3 3/4" Incandescent Lytecaster Non-IC Frame	✓		C,N,F
784197174590	<b>2003R</b> •	3 3/4" Incandescent Lytecaster Remodeler Ring Non-IC	✓		C,N,F
<b>Trims</b>					
784197146559	2005	3 3/4" Incandescent Trim Baffle Black		✓	
784197200107	<b>2005WH</b> •	3 3/4" Incandescent Trim Baffle White	✓		C,N,F
784197146597	2011	3 3/4" Incandescent Trim Pinhole White		✓	
784197146627	<b>2013</b> •	3 3/4" Incandescent Trim Cone Specular Clear	✓		C,N,F
784197359690	2013CD	3 3/4" Incandescent Trim Cone Clear Diffuse		✓	
784197201302	<b>2013WH</b> •	3 3/4" Incandescent Trim Cone White	✓		C,N,F
784197200206	2027WH	3 3/4" Incandescent Trim Recessed Adjustable White Step Baffle		✓	
662057206080	<b>2076WH</b> •	3 3/4" Incandescent Trim Baffle White and Gloss White Flange	✓		C,N,F
784197501020	2090	3 3/4" Incandescent Trim Flat Glass Lens Shower Light Clear Plastic Flange		✓	

\*C= Carrollton, Texas    F= Fontana, California    N= Norwich, Connecticut

“•” beside a blue catalog number indicates item is a recommended distributor shelf stock item.

Pictures are representative of product categories and may not illustrate the exact products listed on the pages of this guide.

Product information may change without notice. Contact your local Philips sales representative for additional product information.



## 5" Lytensing Incandescent & CFL Frames

UPC CODE	CATALOG NUMBER	DESCRIPTION	SERVICE SMART	SPEC SMART	STOCKED IN
784197159290	1004IC •	5" INC Lytensing Incandescent New Construction IC & Non-IC Housing Screw	✓		C,N,F
784197198596	1004ICN •	5" INC Lytensing Incandescent New Construction IC & Non-IC Housing Nail	✓		C,N,F
784197291839	1004ICNQ •	5" INC Lytensing Incandescent New Construction IC & Non-IC Housing Nail Quick Connector	✓		C,N,F
784197159320	1004ICR •	5" INC Lytensing Incandescent Remodeler IC & Non-IC Housing Screw	✓		C,N,F
784197219826	1004ICX •	5" Lytensing Incandescent ICX New Construction IC Housing Screw	✓		C,N,F
784197239008	1004ICXN	5" Lytensing Incandescent ICX New Construction IC Housing Nail		✓	
784197198503	1004SIC •	5" INC Lytensing Incandescent New Construction IC & Non-IC Shallow Housing Screw	✓		C,N,F
784197198534	1004SICR	5" INC Lytensing Incandescent Remodeler IC & Non-IC Shallow Housing Screw		✓	
784197523985	1004F26ESN •	5" Lytensing CFL IC New Construction 26W Energy Star Nail 120V	✓		C,N,F



## 5" Lytecaster Incandescent

UPC CODE	CATALOG NUMBER	DESCRIPTION	SERVICE SMART	SPEC SMART	STOCKED IN
<b>Frames</b>					
784197100056	1000AICM	5" Incandescent Lytecaster IC Airseal Frame		✓	
784197119959	1000IC •	5" Incandescent Lytecaster IC Frame	✓		C,N,F
784197120078	1002P1 •	5" Incandescent Lytecaster Non-IC Frame	✓		C,N,F
784197174576	1003R •	5" Incandescent Lytecaster Remodeler Ring Non-IC	✓		C,N,F
<b>Trims</b>					
784197120153	1005	5" Incandescent Step Baffle Black		✓	
784197100506	1005WH •	5" Incandescent Step Baffle White	✓		C,N,F
784197120450	1013 •	5" Incandescent Cone Specular Clear	✓		C,N,F
784197359706	1013CD •	5" Incandescent Cone Clear Diffuse	✓		C,N,F
784197101305	1013WH •	5" Incandescent Cone White	✓		C,N,F
784197102753	1027WH	5" Incandescent Adjustable Step Baffle White		✓	
784197120689	1046	5" Incandescent Deep Open Reflector Specular Clear		✓	
784197120696	1071 •	5" Incandescent Open Reflector White	✓		C,N,F
784197120702	1076 •	5" Incandescent Basic Black Baffle	✓		C,N,F
784197107604	1076WH •	5" Incandescent Basic White Baffle	✓		C,N,F
784197120719	1078	5" Incandescent Dropped Opalex Shower Light		✓	
784197017132	1081WH	5" Incandescent Open Wet Location for Lytensing PAR30 White		✓	
784197120733	1082	5" Incandescent Basic White Eyeball		✓	
784197017156	1084WH	5" Incandescent Open Wet Location for Lytecaster PAR30 White		✓	
784197120757	1085	5" Incandescent Basic Wall Washer White		✓	
784197501006	1090	5" Incandescent Flat Glass Lens Shower Light Clear Plastic Flange		✓	
784197205881	C71	5" Incandescent Open White Reflector Trim		✓	
784197205874	C76WH •	5" Incandescent White Baffle Reflector Trim	✓		C,N,F

\*C= Carrollton, Texas    F= Fontana, California    N= Norwich, Connecticut

"•" beside a blue catalog number indicates item is a recommended distributor shelf stock item.

Pictures are representative of product categories and may not illustrate the exact products listed on the pages of this guide.

Product information may change without notice. Contact your local Philips sales representative for additional product information.



## 6 3/4" Lytensing Incandescent Frame

UPC CODE	CATALOG NUMBER	DESCRIPTION	SERVICE SMART	SPEC SMART	STOCKED IN
662057517995	<b>1104IC</b> ●	6 3/4" Incandescent Lytensing New Construction IC & Non-IC Housing Screw	✓		C,N,F
784197198589	<b>1104ICN</b> ●	6 3/4" Incandescent Lytensing New Construction IC & Non-IC Housing Nail	✓		C,N,F
784197291815	<b>1104ICNQ</b> ●	6 3/4" Incandescent Lytensing New Construction IC & Non-IC Housing Nail Quick Connector	✓		C,N,F
784197159337	<b>1104ICR</b> ●	6 3/4" Incandescent Lytensing Remodeler IC & Non-IC Housing Screw	✓		C,N,F
784197219819	<b>1104ICX</b> ●	6 3/4" Incandescent Lytensing ICX New Construction IC Housing Screw	✓		C,N,F
784197239015	<b>1104ICXN</b> ●	6 3/4" Incandescent Lytensing ICX New Construction IC Housing Nail	✓		C,N,F
784197198497	1104SIC	6 3/4" Incandescent Lytensing New Construction IC & Non-IC Shallow Housing Screw		✓	
784197198541	1104SICR	6 3/4" Incandescent Lytensing Remodeler IC & Non-IC Shallow Housing Screw		✓	



## 6 3/4" Lytecaster Incandescent

UPC CODE	CATALOG NUMBER	DESCRIPTION	SERVICE SMART	SPEC SMART	STOCKED IN
<b>Frames</b>					
784197110000	1100AICM	6 3/4" INC Lytecaster IC Airseal Housing		✓	
784197110239	<b>1100IC</b> ●	6 3/4" INC Lytecaster IC Frame	✓		C,N,F
784197110222	<b>1102P1</b> ●	6 3/4" INC Lytecaster Non-IC Frame	✓		C,N,F
784197174583	<b>1103R</b> ●	6 3/4" INC Lytecaster Remodeler Ring Non-IC	✓		C,N,F
<b>Trims</b>					
784197123154	1105	6 3/4" Incandescent Trim Step Baffle Black		✓	
784197123352	<b>1113</b> ●	6 3/4" Incandescent Trim Cone Specular Clear	✓		C,N,F
784197123789	1126	6 3/4" Incandescent Trim Regressed Fresnel Lens White Splay		✓	
784197124175	1146	6 3/4" Incandescent Trim A Lamp Open Reflector Specular Clear		✓	
784197117108	<b>1171</b> ●	6 3/4" Incandescent Trim Open Reflector White	✓		C,N,F
784197003500	<b>1176</b> ●	6 3/4" Incandescent Trim Basic Baffle Black	✓		C,N,F
784197118204	1182	6 3/4" Incandescent Trim Basic White Eyeball		✓	
784197110703	<b>1105WH</b> ●	6 3/4" Incandescent Trim Step Baffle White	✓		C,N,F
784197359713	1113CD	6 3/4" Incandescent Trim Cone Clear Diffuse		✓	
784197243609	<b>1117WH</b> ●	6 3/4" Incandescent Trim Basic White Baffle Reflector	✓		C,N,F
784197113520	<b>1131WH</b> ●	6 3/4" Incandescent Trim Slope Ceiling 10-30 Degrees Baffle White	✓		C,N,F
784197113322	1133WH	6 3/4" Incandescent Trim Slope Ceiling 30-45 Degrees Baffle White		✓	
784197017231	1154WH	6 3/4" Incandescent Trim Complete Slope Ceiling 14-45 Degrees White Baffle		✓	
784197003517	<b>1176WH</b> ●	6 3/4" Incandescent Trim Basic Baffle White	✓		C,N,F
784197194758	<b>1177LX</b> ●	6 3/4" Incandescent Trim Flush Glass Shower Light White Plastic Flange	✓		C,N,F
784197117719	1177SH	6 3/4" Incandescent Trim Flush Opalex Shower Light White Plastic Flange		✓	
784197183424	1178LX	5" and 6 3/4" Lytensing Incandescent Trim Drop Opalex Shower Light		✓	
784197117818	1178SH	6 3/4" Incandescent Trim Drop Opalex Shower Light White Plastic Flange		✓	
784197290580	<b>B17WH</b> ●	6 3/4" Incandescent Trim Baffle BR30 Shallow Plenum White	✓		C,N,F

\*C= Carrollton, Texas    F= Fontana, California    N= Norwich, Connecticut

“●” beside a blue catalog number indicates item is a recommended distributor shelf stock item.

Pictures are representative of product categories and may not illustrate the exact products listed on the pages of this guide.

Product information may change without notice. Contact your local Philips sales representative for additional product information.



## 3 3/4" Lytecaster MR16

UPC CODE	CATALOG NUMBER	DESCRIPTION	SERVICE SMART	SPEC SMART	STOCKED IN
<b>Frames</b>					
784197006013	2000AICV	3 3/4" MR16 IC Airseal Frame Magnetic Transformer 120V		✓	
784197146672	2000LV •	3 3/4" MR16 Non-IC Frame Magnetic Transformer 120V	✓		C,N,F
784197200053	2000LVR •	3 3/4" MR16 Non-IC Remodeler Magnetic Transformer 120V	✓		C,N,F
784197239541	2004ICV •	3 3/4" Lytening MR16 IC Airseal Housing Magnetic Transformer 120V Screw	✓		C,N,F
784197238995	2004ICVN	3 3/4" Lytening MR16 IC Airseal Housing Magnetic Transformer 120V Nail		✓	
<b>Trims</b>					
784197386962	2025WH •	3 3/4" Mini Swivel Adjustable Trim MR16 White	✓		C,N,F
784197146566	2006	3 3/4" Adjustable SLOT Trim MR16 White		✓	



## 3 3/4" Lytepoints MR16

UPC CODE	CATALOG NUMBER	DESCRIPTION	SERVICE SMART	SPEC SMART	STOCKED IN
<b>Frames</b>					
662057037196	300MRSPX •	Lytepoints 3 3/4" Remodeler Non-IC MR16 Magnetic Silent Pack	✓		C,N,F
662057037233	302MRIC7SPX •	Lytepoints 3 3/4" IC-Airseal Frame MR16 Magnetic Silent Pack 7" Box	✓		C,N,F
662057037226	302MRIC9SPX •	Lytepoints 3 3/4" IC-Airseal Frame MR16 Magnetic Silent Pack 9" Box	✓		C,N,F
662057037141	302MRSPX •	Lytepoints 3 3/4" Non-IC Frame MR16 Magnetic Silent Pack	✓		C,N,F
784197316341	303MRE •	Lytepoints 3 3/4" Non IC Shallow Remodeler Electronic	✓		C,N,F
784197436018	3401MREX •	Lytepoint 3 3/4" Adjustable	✓		C,N,F
<b>Trims</b>					
624563100962	304CCDX •	Lytepoint 3 3/4" Adjustable Cone Clear Diffuse	✓		C,N,F
624563083418	304CLX •	Lytepoint 3 3/4" Adjustable Cone Specular Clear	✓		C,N,F
624563083319	305WHWX •	Lytepoint 3 3/4" Adjustable Baffle White	✓		C,N,F
624563083494	308WWWX	Lytepoint 3 3/4" Adjustable Pinhole White		✓	
784197435707	313STX	Lytepoint 3 3/4" Adjustable Gimbal Brushed Steel		✓	
784197435714	313WHX •	Lytepoint 3 3/4" Adjustable Gimbal White	✓		C,N,F
784197436070	374CHX •	Lytepoint 3 3/4" Adjustable Chrome Cone	✓		C,N,F
784197436094	375WHX •	Lytepoint 3 3/4" Adjustable White Baffle	✓		C,N,F
784197436339	378WHX •	Lytepoint 3 3/4" Adjustable Elbow White	✓		C,N,F



## 4" C Plus

UPC CODE	CATALOG NUMBER	DESCRIPTION	SERVICE SMART	SPEC SMART	STOCKED IN
<b>Frames</b>					
783238154447	P4 •	4" C Plus New Construction INC Non-IC Housing	✓		C,N,F
783238154454	P4ASIC •	4" C Plus New Construction INC IC-Airseal Housing	✓		C,N,F
783238154461	P4R •	4" C Plus Non-IC INC Remodeler Housing	✓		C,N,F
<b>Trims</b>					
783238154478	P4B •	C Plus 4" Black Baffle Downlight	✓		C,N,F
783238154485	P4BW •	C Plus 4" White Baffle Downlight	✓		C,N,F
783238154553	P4EW •	C Plus 4" White Eyeball	✓		C,N,F
783238154560	P4EB •	C Plus 4" Black Eyeball	✓		C,N,F
783238154607	P4F •	C Plus 4" Fresnel Lens Shower Light	✓		C,N,F
783238154515	P4RC •	C Plus 4" Clear Cone Downlight	✓		C,N,F
783238154577	P4GW •	C Plus 4" Adjustable Gimbal White	✓		C,N,F
783238154584	P4GB •	C Plus 4" Adjustable Gimbal Black	✓		C,N,F

\*C= Carrollton, Texas    F= Fontana, California    N= Norwich, Connecticut

"•" beside a blue catalog number indicates item is a recommended distributor shelf stock item.

Pictures are representative of product categories and may not illustrate the exact products listed on the pages of this guide.

Product information may change without notice. Contact your local Philips sales representative for additional product information.



## 6" C Plus

UPC CODE	CATALOG NUMBER	DESCRIPTION	SERVICE SMART	SPEC SMART	STOCKED IN
<b>Frames</b>					
783238169021	PR75ASICNB ●	6" C Plus New Construction IC-Airseal Housing	✓		C,N,F
783238146718	R9ASIC ●	6" C Plus New Construction IC-Airseal Shallow Housing	✓		C,N,F
783238188886	QL6NBQP ●	6" C Plus New Construction Airseal / IC QuickLights Housing	✓		C,N,F
783238182891	PR26ASICNBNE1 ●	6" C Plus New Construction IC Airseal 26W CFL Vertical	✓		C,N,F
783238131233	CRR1NBQP ●	6" C Plus IC/Airseal INC Remodeler Housing	✓		C,N,F
783238146824	RR9ASIC ●	6" C Plus Shallow Remodeler	✓		C,N,F
783238186660	FD2IC6V2632U ●	6" Firedome Housing CFL	✓		C,N,F
783238170096	FDS2632 ●	C Plus 6" Firedome Socket CFL	✓		C,N,F
783238185090	FD2IC6V90 ●	6" Firedome Housing Incandescent	✓		C,N,F
783238170065	FDSINC ●	C Plus 6" Firedome Socket Incandescent	✓		C,N,F
783238185106	FD2NECK-2H	C Plus 6" Firedome Collar Accessory for 2-Hour Rating		✓	
783238181559	VS6 ●	C Plus 6" IC Slope Ceiling Frame Housing	✓		C,N,F
<b>Trims</b>					
783238121388	RB30W ●	6" C Plus PAR38, PAR30, BR30 Grooved Baffle White	✓		C,N,F
783238146770	RBS30W ●	6" C Plus Shallow PAR-BR30 Grooved Baffle WH	✓		C,N,F
783238039850	RB30 ●	6" C Plus PAR38, PAR30, BR30 Grooved Baffle Black	✓		C,N,F
783238121395	RB40W ●	6" C Plus PAR38, BR40 Grooved Baffle White	✓		C,N,F
783238039904	RC30C ●	6" C Plus Clear Cone for INC or CFL White Flange	✓		C,N,F
783238039928	RC30W ●	6" C Plus White Cone for INC or CFL White Flange	✓		C,N,F
783238190988	RBA100CLR ●	6" C Plus 6" Clear Reflector for INC & CFL	✓		C,N,F
783238137020	RBC30WM ●	6" C Plus PAR38, PAR30, BR30 Cone Grooved Baffle White	✓		C,N,F
783238137013	RBC30M ●	6" C Plus PAR38, PAR30, BR30 Cone Grooved Baffle Black	✓		C,N,F
783238154386	RF30W ●	6" C Plus PAR30 White Large Flange Trim	✓		C,N,F
783238039966	RS30W ●	6" C Plus PAR30 White SPAY Trim	✓		C,N,F
783238017551	SHR12IC ●	6" C Plus A19 Albalite Regressed Lens Plastic White Flange	✓		C,N,F
783238015267	SHR16IC ●	6" C Plus A19 Drop Opal Shower Light Vertical Plastic White Flange	✓		C,N,F
783238161476	SHR6ICW ●	6" C Plus Regressed Shower Light CFL Vertical White	✓		C,N,F
783238121166	R18P ●	6" C Plus Eyeball BR30 White	✓		C,N,F
783238186172	VS630WHT	6" C Plus Slope Ceiling White Baffle		✓	
783238186165	VS630BLK	6" C Plus Slope Ceiling Black Baffle		✓	

## Accessories

UPC CODE	CATALOG NUMBER	DESCRIPTION	SERVICE SMART	SPEC SMART	STOCKED IN
784197145125	1955	Lytecaster Retaining Clip		✓	
784197145132	1956 ●	Lytecaster Set of 4 Mounting Bar Clips	✓		C,N,F
784197367237	LAS56 ●	Lytecaster Airseal Gasket	✓		C,N,F
783238121722	OV2	C Plus 6" Oversize Flange Accessory		✓	

\*C= Carrollton, Texas    F= Fontana, California    N= Norwich, Connecticut

“●” beside a blue catalog number indicates item is a recommended distributor shelf stock item.

Pictures are representative of product categories and may not illustrate the exact products listed on the pages of this guide.

Product information may change without notice. Contact your local Philips sales representative for additional product information.

# Calculite Downlighting



## 1.75" Calculite LED

UPC CODE	CATALOG NUMBER	DESCRIPTION	SERVICE SMART	SPEC SMART	STOCKED IN
662057574776	C2LDLCCDP	Calculite 1.75" LED REFL, Downlight Reflector		✓	
662057634463	C2LIC	Calculite 2.0" Aperture New Construction		✓	
662057569970	CA2FMR	Calculite Accessory 1.75" Flush Mount Ring		✓	
662057625492	CA2X2FMR	Calculite Accessory 1.75" Square Flush Mount		✓	
662057574516	C2L04DL30K25R1	1.75" FIK Remodeler: 3000K, 25 Degree 120V. C2L or C2x2L reqd		✓	
662057741819	C2L04DL30K25RUZ10V	1.75" FIK Remodeler: 3000K, 25 Degree 120-277v. 0-10V dimming.		✓	



## 3" Calculite Low Voltage MR16

UPC CODE	CATALOG NUMBER	DESCRIPTION	SERVICE SMART	SPEC SMART	STOCKED IN
<b>Frames</b>					
784197492083	C3ALVE1	Calculite 3" Frame Non IC Airseal, Low Voltage Electronic Transformer - 120V	✓		C,N,F
784197492113	C3LVE1	Calculite 3" Frame Non IC, Low Voltage Electronic Transformer - 120V	✓		C,N,F
784197224998	C4AIC	Calculite 4" Frame IC Airseal - Incandescent	✓		C,N,F
784197529222	C4AICLVE1	Calculite 4" Frame IC,Airseal Low Voltage, Electronic Transformer - 120V	✓		C,N,F
<b>Trims</b>					
784197492212	C3MRACCDW	Calculite 3" Trim Kit Adjustable Accent CCD w/White Flange	✓		C,N,F

## 4" Calculite Low Voltage MR16

UPC CODE	CATALOG NUMBER	DESCRIPTION	SERVICE SMART	SPEC SMART	STOCKED IN
784197529284	C4LVMU	Calculite 4" Frame, Non-IC, Low Voltage	✓		C,N,F
784197242862	C4MRACCDW	Calculite 4" Trim Kit Adjustable Accent CCD w/White Flange	✓		C,N,F



## 4" Calculite CFL

UPC CODE	CATALOG NUMBER	DESCRIPTION	SERVICE SMART	SPEC SMART	STOCKED IN
784197281663	4118VU	4" 1-18W Tripple Tube Frame-in-kit w/Ballast Ballast	✓		C,N,F
784197281670	4118VUEM	4" 1-18W Tripple Tube FIK w/Ballast Ballast Emergency		✓	
784197227227	8011CCLW	4" 18W Triple Tube Vertical Downlight Reflector Comfort Clear White Flange	✓		C,N,F
784197596156	D4132VU	Vetro DNLT 4" 1/26-32 TTT 120/277V USE w/8011 & D4A Series Vetro		✓	

\*C= Carrollton, Texas    F= Fontana, California    N= Norwich, Connecticut

"•" beside a blue catalog number indicates item is a recommended distributor shelf stock item.

Pictures are representative of product categories and may not illustrate the exact products listed on the pages of this guide.

Product information may change without notice. Contact your local Philips sales representative for additional product information.





## 4", 6", 7" Calculte Incandescent

UPC CODE	CATALOG NUMBER	DESCRIPTION	SERVICE SMART	SPEC SMART	STOCKED IN
784197770006	A400	4-1/2" FIK Incandescent Frame in Kit		✓	
784197770051	B600	6" FIK Incandescent Frame in Kit		✓	
784197770105	C700	7-1/2" FIK Incandescent Frame in Kit		✓	



## 6" Calculte CFL

UPC CODE	CATALOG NUMBER	DESCRIPTION	SERVICE SMART	SPEC SMART	STOCKED IN
<b>Frames</b>					
784197240226	6132BURM	6" FIK 1 LT 26/32W Triple Tube Electronic Remodeler		✓	
662057023571	S6126BU	6" FIK (1) 26W Triple Tube Vertical and Horizontal Lamp		✓	
662057601007	S6132BJ2MX	6" FIK 1-26/32W TTT 277V w/Advance Mark 10		✓	
662057131764	S6132BJULECD	6" FIK 1-26/32W TTT Lutron Eco-System		✓	
662057107738	S6132BJUM7	6" FIK 1-26/32W TTT 120/277V MARK VII Dimming		✓	
784197418588	S6132BU	6" FIK 1 32W Triple Tube for Vertical and Horizontal Lamp	✓		C,N,F
784197447083	S6132BUEM	6" FIK Steel 1-26/32W TTT 120/277V w/Emergency	✓		C,N,F
662057601045	S6132BUEM4E	6" FIK 1-26/32W TTT 120/277V EM w/ integral EM Test		✓	
662057011554	S6132BULC	6" FIK Aperture, (1) 26/32W Triple Tube - Chicago Plenum		✓	
784197510633	S6132BUS	6" FIK Aperture, (1) 26/32W Triple Tube		✓	
<b>Trims</b>					
784197226527	8021CCLW	6" 26/32W Triple Tube Vertical Reflector Comfort Clear White Flange	✓		C,N,F
784197226657	8021WWCCLW	6" 26/32W Triple Tube Single Open Wall Wash Reflector		✓	
784197226695	8031CCLW	6" Horiz. Tri-Tube Downlight Reflector Comfort Clear White Flange	✓		C,N,F



## 7" Calculte CFL

UPC CODE	CATALOG NUMBER	DESCRIPTION	SERVICE SMART	SPEC SMART	STOCKED IN
<b>Frames</b>					
784197527112	S7142BU	7" FIK 1-26/32/42W Triple Tube ELECT Frame in Kit for Vertical & Horizontal Lamp	✓		C,N,F
784197527136	S7142BUEM	7" FIK Steel 1-42W TTT 120/277V Emergency	✓		C,N,F
784197633134	S7132BU	7" FIK 1-32W TTT Electronic 4-PIN UNV Steel FIK		✓	
662057601601	S7142BUEM4E	7" FIK 1-42W TTT 120/277V EM w/ integral TEST		✓	
<b>Trims</b>					
784197227593	8022CCLW	7" 32/42W Triple Tube Downlight Vertical Reflector Comfort Clear White Flange		✓	



## Calculte CFL - Square

UPC CODE	CATALOG NUMBER	DESCRIPTION	SERVICE SMART	SPEC SMART	STOCKED IN
784197503093	4X4132HUEM4E	4 1/2" Square FIK - 26, 32W Triple Integral EM with internal test switch		✓	
784197359805	4X9142HU	4 1/2" X 9" Rectangular FIK - 26,32,42W		✓	
784197359904	9X9242HU	9" X 9" Square FIK 2X26, 32, 42W Triple		✓	
784197360351	4X4CCLW	4 1/2" X 4 1/2" Open Trim - CCL/White		✓	

\*C= Carrollton, Texas    F= Fontana, California    N= Norwich, Connecticut

"•" beside a blue catalog number indicates item is a recommended distributor shelf stock item.

Pictures are representative of product categories and may not illustrate the exact products listed on the pages of this guide.

Product information may change without notice. Contact your local Philips sales representative for additional product information.



## 8" Calculite CFL

UPC CODE	CATALOG NUMBER	DESCRIPTION	SERVICE SMART	SPEC SMART	STOCKED IN
784197361150	8242HUV	8" FIK 120/277V ELEC. 2-42W/Vandal		✓	
784197527198	S8242HU	8" FIK 2-26/32/-42W TRIPE Tube ELEC 4PIN		✓	
784197527082	S8242HUEM	8" FIK Steel 2-26/32/42W TTT 120/277V with Emergency		✓	
784197226978	8038CCLW	8" Horiz. TRI-Tube Downlight Reflector CCD with White Flange		✓	



## Calculite Accessories

UPC CODE	CATALOG NUMBER	DESCRIPTION	SERVICE SMART	SPEC SMART	STOCKED IN
784197145002	1950	Mounting Bars 18" Set of (2)	✓		C,N,F
784197145033	1951	Mounting Bars 27" Set of (2)	✓		C,N,F
784197289041	7994	Set of 2 Telescoping Mounting Bars-Calculite		✓	
999999115324	C4TCA2	4" Evolution Thick Ceiling Adapter Ring		✓	
784197493448	CA3FMR	Plaster Ring Accessory for 3" Evolution		✓	
662057009223	CA4FMR	Plaster Ring Accessory for 4" LED Downlight		✓	
662057452036	CA7FMR	Plaster Ring Accessory for 7" LED Downlight		✓	
662057503035	CLAEM1520	Calculite LED Field-Wire EM-Pack 1500/2000 Lumen		✓	



## 4" Calculite White LED Round

UPC CODE	CATALOG NUMBER	DESCRIPTION	SERVICE SMART	SPEC SMART	STOCKED IN
<b>Frames</b>					
662057862033	C4L10NUVBZ10V	Calculite 4" 1000 Lumen LED New Construction - 120-277V	✓		C,N,F
662057862057	C4L10NUVBLD	Calculite 4" 1000 Lumen LED New Construction - 120-277V Lutron Hi Lume		✓	
662057873961	C4L10NUVBZ10VEM	Calculite 4" 1000 Lumen LED New Construction - 120-277V Emergency		✓	
662057862040	C4L10NUVBZ10VLC	Calculite 4" 1000 Lumen LED New Construction - 120-277V - Chicago Plenum		✓	
662057862071	C4L15N1VBZ10V	Calculite 4" 1500 Lumen LED New Construction - 120V	✓		C,N,F
662057862118	C4L15N2VBZ10V	Calculite 4" 1500 Lumen LED New Construction - 277V	✓		C,N,F
662057862095	C4L15N1VBLD	Calculite 4" 1500 Lumen LED New Construction - 120V Lutron Hi Lume		✓	
662057873978	C4L15N1VBZ10VEM	Calculite 4" 1500 Lumen LED New Construction - 120V Emergency		✓	
662057862088	C4L15N1VBZ10VLC	Calculite 4" 1500 Lumen LED New Construction - Chicago Plenum		✓	
662057873985	C4L15N2VBZ10VEM	Calculite 4" 1500 Lumen LED New Construction - 277V Emergency		✓	
<b>Trims</b>					
662057855196	C4L10DL30KCCLWVB	Calculite 4" 1000 /1500 Lumen 3000K LED Downlight Trim Comfort Clear White Flange		✓	
662057855349	C4L10DL35KCCLWVB	Calculite 4" 1000 /1500 Lumen 3500K LED Downlight Trim Comfort Clear White Flange		✓	
662057855967	C4L10WW30KCCLWVB	Calculite 4" 1000 /1500 Lumen 3000K LED Open Wall Wash Trim Comfort Clear White Flange		✓	
662057856339	C4L10WW35KCCLWVB	Calculite 4" 1000 /1500 Lumen 3500K LED Open Wall Wash Trim Comfort Clear White Flange		✓	

\*C= Carrollton, Texas    F= Fontana, California    N= Norwich, Connecticut

"•" beside a blue catalog number indicates item is a recommended distributor shelf stock item.

Pictures are representative of product categories and may not illustrate the exact products listed on the pages of this guide.

Product information may change without notice. Contact your local Philips sales representative for additional product information.



## 6" Calculite White LED Round

UPC CODE	CATALOG NUMBER	DESCRIPTION	SERVICE SMART	SPEC SMART	STOCKED IN
<b>Frames</b>					
662057862347	C6L15NUVBZ10V	Calculite 6" 1500 Lumen LED New Construction 120-277V	✓		C,N,F
662057862385	C6L20N1VBZ10V	Calculite 6" 2000 Lumen LED New Construction 120V	✓		C,N,F
662057862361	C6L15NUVB LD	Calculite 6" 1500 Lumen LED New Construction 120-277V - Lutron Hi Lume		✓	
662057874142	C6L15NUVBZ10VEM	Calculite 6" 1500 Lumen LED New Construction 120-277V - Emergency		✓	
662057862354	C6L15NUVBZ10VLC	Calculite 6" 1500 Lumen LED New Construction 120-277V Chicago Plenum		✓	
662057862408	C6L20N1VBLD	Calculite 6" 2000 Lumen LED New Construction 120V Lutron Hi Lume		✓	
662057874159	C6L20N1VBZ10VEM	Calculite 6" 2000 Lumen LED New Construction 120V Emergency		✓	
662057862392	C6L20N1VBZ10VLC	Calculite 6" 2000 Lumen LED New Construction 120V Chicago Plenum		✓	
662057862422	C6L20N2VBZ10V	Calculite 6" 2000 Lumen LED New Construction 277V		✓	
662057874197	C6L20N2VBZ10VEM	Calculite 6" 2000 Lumen LED New Construction 277V Emergency		✓	
<b>Trims</b>					
662057859491	C6L1520DL30KMCCLWVB	Calculite 6" 1500/2000lm Med Bm DL, 3000K, Comfort Clear White Flange		✓	
662057860541	C6L1520DL30KWCCLWVB	Calculite 6" 1500/2000lm Wide Bm DL, 3000K, Comfort Clear White Flange		✓	
662057859637	C6L1520DL35KMCCLWVB	Calculite 6" 1500/2000lm Med Bm DL, 3500K, Comfort Clear White Flange		✓	
662057860701	C6L1520DL35KWCCLWVB	Calculite 6" 1500/2000lm Wide Bm DL, 3500K, Comfort Clear White Flange		✓	
662057859774	C6L1520WW30KCCLWVB	Calculite 6" 1500/2000 Lumen 3000K LED Open WW - Comfort Clear White Flange		✓	
662057860121	C6L1520WW35KCCLWVB	Calculite 6" 1500/2000 Lumen 3500K LED Open WW - Comfort Clear White Flange		✓	



## 4x4" Calculite White LED Square

UPC CODE	CATALOG NUMBER	DESCRIPTION	SERVICE SMART	SPEC SMART	STOCKED IN
<b>Frames</b>					
662057862194	C4X4L10NUVBZ10V	Calculite 4x4 1000lm LED New Construction 120-277V	✓		C,N,F
662057862231	C4X4L10NUVB LD	Calculite 4x4 1000lm LED New Construction 120-277V Lutron Hi Lume		✓	
662057862262	C4X4L15N1VBZ10V	Calculite 4x4 1500lm LED New Construction 120V		✓	
<b>Trims</b>					
662057889634	C4X4L10DL30KCCLWVB	Calculite 4x4 1000/1500LM 3000K LED Downlight Comfort Clear White Flange		✓	
662057889788	C4X4L10DL35KCCLWVB	Calculite 4x4 1000/1500LM 3500K LED Downlight Comfort Clear White Flange		✓	
662057890227	C4X4L10WW30KCCLWVB	Calculite 4x4 1000/1500LM 3000K LED Lensed Wall Wash Comfort Clear White Flange		✓	
662057890418	C4X4L10WW35KCCLWVB	Calculite 4x4 1000/1500LM 3500K LED Lensed Wall Wash Comfort Clear White Flange		✓	

\*C= Carrollton, Texas    F= Fontana, California    N= Norwich, Connecticut

"•" beside a blue catalog number indicates item is a recommended distributor shelf stock item.

Pictures are representative of product categories and may not illustrate the exact products listed on the pages of this guide.

Product information may change without notice. Contact your local Philips sales representative for additional product information.



## 6x6" Calculite White LED Square

UPC CODE	CATALOG NUMBER	DESCRIPTION	SERVICE SMART	SPEC SMART	STOCKED IN
662057862460	C6X6L15NUVBZ10V	Calculite 6x6 1500 Lumen LED New Construction 120-277v	✓		C,N,F
662057862507	C6X6L20N1VBZ10V	Calculite 6x6 2000 Lumen LED New Construction 120v	✓		C,N,F
662057862484	C6X6L15NUVBLD	Calculite 6x6 1500 Lumen LED New Construction 120-277v Lutron Hi Lume		✓	
662057874210	C6X6L15NUVBZ10VEM	Calculite 6x6 1500 Lumen LED New Construction 120-277v Emergency		✓	
662057862477	C6X6L15NUVBZ10VLC	Calculite 6x6 1500 Lumen LED New Construction 120-277v Chicago Plenum		✓	
662057862514	C6X6L20N1VBZ10VLC	Calculite 6x6 2000 Lumen LED New Construction 120v - Chicago Plenum		✓	
<b>Trims</b>					
662057890913	C6X6L1520DL30KC-CLWVB	Calculite 6x6 1500/2000LM 3000K LED Downlight Comfort Clear White Flange		✓	
662057891057	C6X6L1520DL35KC-CLWVB	Calculite 6x6 1500/2000LM 3500K LED Downlight Comfort Clear White Flange		✓	
662057891477	C6X6L1520WW30KC-CLWVB	Calculite 6x6 1500/2000LM 3000K LED Lensed Wall Wash Comfort Clear White Flange		✓	
662057891613	C6X6L1520WW35KC-CLWVB	Calculite 6x6 1500/2000LM 3500K LED Lensed Wall Wash Comfort Clear White Flange		✓	



## 7" Calculite White LED Round

UPC CODE	CATALOG NUMBER	DESCRIPTION	SERVICE SMART	SPEC SMART	STOCKED IN
<b>Frames</b>					
662057862583	C7L15NUVBZ10V	Calculite 7" 1500 Lumen LED New Construction 120-277V		✓	
662057862705	C7L35N1VBZ10V	Calculite 7" 3500 Lumen LED New Construction 120V		✓	
<b>Trims</b>					
662057864259	C7L1520DL30KMCLWVB	Calculite 7" 1500/2000 Lumen LED Medium Beam Downlight 3000K Comfort Clear White Flange		✓	
662057864877	C7L1520DL30KWCLWVB	Calculite 7" 1500/2000 Lumen LED Wide Beam Downlight 3000K Comfort Clear White Flange		✓	
662057864396	C7L1520DL35KMCLWVB	Calculite 7" 1500/2000 Lumen LED Medium Beam Downlight 3500k Comfort Clear White Flange		✓	
662057865010	C7L1520DL35KWCLWVB	Calculite 7" 1500/2000 Lumen LED Wide Beam Downlight 3500k Comfort Clear White Flange		✓	
662057865461	C7L1520WW30KCCLWVB	Calculite 7" 1500/2000 Lumen LED Open Wall Wash 3000K Comfort Clear White Flange		✓	
662057865607	C7L1520WW35KCCLWVB	Calculite 7" 1500/2000 Lumen LED Open Wall Wash 3500k Comfort Clear White Flange		✓	



## 8" Calculite White LED Round

UPC CODE	CATALOG NUMBER	DESCRIPTION	SERVICE SMART	SPEC SMART	STOCKED IN
662057862781	C8L35N1VBZ10V	Calculite 8" 3500 Lumen LED New Construction 120V		✓	

\*C= Carrollton, Texas    F= Fontana, California    N= Norwich, Connecticut

A large dot "•" beside a blue catalog number indicates item is a suggested stock item.

Pictures are representative of product categories and may not illustrate the exact products listed on the pages of this guide.

Product information may change without notice. Contact your local Philips sales representative for additional product information.



## 4" Revelation LED Square

UPC CODE	CATALOG NUMBER	DESCRIPTION	SERVICE SMART	SPEC SMART	STOCKED IN
<b>Frames</b>					
781372288295	OM4LED20SQ120	4" 1000 Lumen Square LED Downlight Housing only-120V	✓		C,N,F
781372300065	OM4LED20SQ277	4" 1000 Lumen Square LED Downlight Housing only-277V	✓		C,N,F
<b>Trims</b>					
781372301208	R4LED30KSQCSS	4" Square LED 3000K, w/ Clear Semi-Specular Reflector ( use with the 4" Square OM LED Housing)	✓		C,N,F
781372288394	R4LED35KSQCS	4" Square LED 3500K, w/ Clear Specular Reflector ( use with the 4" Square OM LED Housing)		✓	
781372299963	R4LED35KSQCSS	4" Square LED 3500K, w/ Clear Semi-Specular Reflector ( use with the 4" Square OM LED Housing)		✓	



## 4" Revelation LED Round

UPC CODE	CATALOG NUMBER	DESCRIPTION	SERVICE SMART	SPEC SMART	STOCKED IN
<b>Frames</b>					
781372288288	OM4LED20120	4" Round LED Downlight Housing only, 1000 Lumen, 120V	✓		C,N,F
781372302892	OM4LED20277	4" Round LED Downlight Housing only, 1000 Lumen, 277V	✓		C,N,F
781372336057	OM4LED28120	4" 1500 Lumen LED Downlight Housing only-120V	✓		C,N,F
781372336064	OM4LED28277	4" 1500 Lumen LED Downlight Housing only-277V	✓		C,N,F
<b>Trims</b>					
781372288325	R4LED30KCS	4" Round LED 3000K, w/ Clear Specular Reflector ( use 4" OM LED Housing)	✓		C,N,F
781372302557	R4LED30KCSS	4" Round LED 3000K, w/ Clear Semi - Specular Reflector ( use 4" OM LED Housing)		✓	
781372288332	R4LED35KCS	4" Round LED 3500K, w/ Clear Specular Reflector ( use 4" OM LED Housing)	✓		C,N,F
781372299956	R4LED35KCSS	4" Round LED 3500K, w/ Clear Semi - Specular Reflector ( use 4" OM LED Housing)	✓		C,N,F

## Revelation Accessories

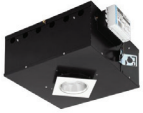
UPC CODE	CATALOG NUMBER	DESCRIPTION	SERVICE SMART	SPEC SMART	STOCKED IN
781372051783	Q1031	27" Flat Bar Hangers (set of 2) for use with wood joist ceilings	✓		C,N,F
781372175458	Q1032	26" C-Channel (set of 2) for use with t-grid or wood joist	✓		C,N,F
781372216885	Q1033	24" Expandable Bar Hangers (set of 2) with pre-installed nail for use with t-grid or wood joist	✓		C,N,F

\*C= Carrollton, Texas    F= Fontana, California    N= Norwich, Connecticut

“•” beside a blue catalog number indicates item is a recommended distributor shelf stock item.

Pictures are representative of product categories and may not illustrate the exact products listed on the pages of this guide.

Product information may change without notice. Contact your local Philips sales representative for additional product information.



## 6" Revelation LED Round

UPC CODE	CATALOG NUMBER	DESCRIPTION	SERVICE SMART	SPEC SMART	STOCKED IN
<b>Frames</b>					
781372303912	OM6LED27120	6" 1500 Lumen LED Downlight Housing only-120v	✓		C,N,F
781372294760	OM6LED27277	6" 1500 Lumen LED Downlight Housing only-277V	✓		C,N,F
781372288318	OM6LED39120	6" 2000 Lumen LED Downlight Housing only-120v	✓		C,N,F
781372304568	OM6LED39277	6" 2000 Lumen LED Downlight Housing only-277V	✓		C,N,F
781372319494	OM6LED39RMDLR120	6" 2000 Lumen Round, Remodel 120V Housing		✓	
781372319517	OM6LED39RMDLR277	6" 2000 Lumen Round, Remodel 277V Housing		✓	
781372342508	OM6LED53120	6" 3000 Lumen Round LED Downlight Housing 120 Volt	✓		C,N,F
781372342492	OM6LED53277	6" 3000 Lumen Round LED Downlight Housing 277 Volt	✓		C,N,F
<b>Trims</b>					
781372288448	R6LED30KMDCS	6" Round LED 3000K, Medium w/ Clear Specular Reflector 1500 or 2000lm		✓	
781372304285	R6LED30KMDCSS	6" Round LED 3000K, Medium w/ Clear Semi-Specular Reflector 1500 or 2000lm		✓	
781372288479	R6LED30KWDCS	6" Round LED 3000K, Wide w/ Clear Specular Reflector 1500 or 2000lm	✓		C,N,F
781372310637	R6LED30KWDCSS	6" Round LED 3000K, Wide w/ Clear Semi-Specular Reflector 1500 or 2000lm	✓		C,N,F
781372288455	R6LED35KMDCS	6" Round LED 3500K, Medium w/ Clear Specular Reflector 1500 or 2000lm	✓		C,N,F
781372302847	R6LED35KMDCSS	6" Round LED 3500K, Medium w/ Clear Semi-Specular Reflector 1500 or 2000lm	✓		C,N,F
781372288486	R6LED35KWDCS	6" Round LED 3500K, Wide w/ Clear Specular Reflector 1500 or 2000lm	✓		C,N,F
781372299468	R6LED35KWDCSS	6" Round LED 3500K, Wide w/ Clear Semi-Specular Reflector 1500 or 2000lm	✓		C,N,F
781372288462	R6LED40KMDCS	6" Round LED 4000K, Medium w/ Clear Specular Reflector 1500 or 2000lm	✓		C,N,F
781372310729	R6LED40KMDCSS	6" Round LED 4000K, Medium w/ Clear Semi-Specular Reflector 1500 or 2000lm	✓		C,N,F
781372288493	R6LED40KWDCS	6" Round LED 4000K, Wide w/ Clear Specular Reflector 1500 or 2000lm	✓		C,N,F
781372342539	R6LED5330KWDCS	6" 3000 Lumen Round LED 3000K, Wide w/ Clear Specular Reflector		✓	
781372342546	R6LED5335KWDCS	6" 3000 Lumen Round LED 3500K, Wide w/ Clear Specular Reflector		✓	



## 8" Revelation LED Round

UPC CODE	CATALOG NUMBER	DESCRIPTION	SERVICE SMART	SPEC SMART	STOCKED IN
<b>Frames</b>					
781372344694	OM8LED39RMDLR277	8" 2000 Lumen, Round LED, Remodel Downlight 3000K		✓	
781372342515	OM8LED53120	8" 3000 Lumen Round LED Downlight Housing 120 Volt	✓		C,N,F
781372342522	OM8LED53277	8" 3000 Lumen Round LED Downlight Housing 277 Volt	✓		C,N,F
<b>Trims</b>					
781372342560	R8LED5330KWDCS	8" 3000 Lumen Round LED 3000K, Wide Distribution w/ Clear Specular Reflector		✓	
781372342577	R8LED5335KWDCS	8" 3000 Lumen Round LED 3500K, Wide Distribution w/ Clear Specular Reflector		✓	

\*C= Carrollton, Texas      F= Fontana, California      N= Norwich, Connecticut

"•" beside a blue catalog number indicates item is a recommended distributor shelf stock item.

Pictures are representative of product categories and may not illustrate the exact products listed on the pages of this guide.

Product information may change without notice. Contact your local Philips sales representative for additional product information.



# Recessed

---

# Recessed

## Softlights (Direct/Indirect)



### Coffaire LED Recessed

UPC CODE	CATALOG NUMBER	DESCRIPTION	SERVICE SMART	SPEC SMART	STOCKED IN
734340132694	CFS22GPG25L35ULAG	2x2, 2500lm, 3500K, Perf Diffuser w/ White Overlay, Universal Electronic Driver		✓	
782343468890	CFS24GPG30L35ULAG	2x4, 3000lm, 3500K, Perf Diffuser w/ White Overlay, Universal Electronic Driver		✓	



### Coffaire Recessed

UPC CODE	CATALOG NUMBER	DESCRIPTION	SERVICE SMART	SPEC SMART	STOCKED IN
782343966273	CFS1GPF232UNVHI	1x4, 2 Lamp, 32W T8, Perf Diffuser w/ White Overlay, Universal Electronic Ballast		✓	
782343969809	CFS2GPF217UNVHI	2x2, 2 Lamp, 17W T8, Perf Diffuser w/ White Overlay, Universal Electronic Ballast	✓		C,N,F
782343969847	<b>CFS2GPF2FTUNVPR •</b>	2x2, 2 Lamp, 40W TT5, Perf Diffuser w/ White Overlay, Universal Electronic Ballast	✓		C,N,F
782343932681	CFH2GPF228UNVPG	2x4, 2 Lamp, 28W T5, Perf Diffuser w/ White Overlay, Air Return Option, Universal Electronic Ballast	✓		N
782343917831	CFS2GPF228UNVPG	2x4, 2 Lamp, 28W T5, Perf Diffuser w/ White Overlay, Universal Electronic Ballast	✓		C,N
782343917688	CFH2GPF232UNVHI	2x4, 2 Lamp, 32W T8, Perf Diffuser w/ White Overlay, Air Return Option, Universal Electronic Ballast	✓		C,N,F
782343969823	<b>CFS2GPF232UNVHI •</b>	2x4, 2 Lamp, 32W T8, Perf Diffuser w/ White Overlay, Universal Electronic Ballast	✓		C,N,F
782343917657	CFH2GPF332UNVH3	2x4, 3 Lamp, 32W T8, Perf Diffuser w/ White Overlay, Air Return Option, Universal Electronic Ballast	✓		C,N,F
782343916919	<b>CFS2GPF332UNVH3 •</b>	2x4, 3 Lamp, 32W T8, Perf Diffuser w/ White Overlay, Universal Electronic Ballast	✓		C,N,F
782343917725	CFS2GPF332UNVHI	2x4, 3 Lamp, 32W T8, Perf Diffuser w/ White Overlay, Universal Electronic Ballast	✓		C,N,F

\*C= Carrollton, Texas    F= Fontana, California    N= Norwich, Connecticut

“•” beside a blue catalog number indicates item is a recommended distributor shelf stock item.

Pictures are representative of product categories and may not illustrate the exact products listed on the pages of this guide.

Product information may change without notice. Contact your local Philips sales representative for additional product information.





## Arioso Recessed

UPC CODE	CATALOG NUMBER	DESCRIPTION	SERVICE SMART	SPEC SMART	STOCKED IN
734340958003	2AVG217-PMW-UNV-1/2-EB	2x2, 2 Lamp, 17W T8, Perf Diffuser w/ White Overlay, Universal Electronic Ballast		✓	
781370035709	2AVG317-PMW-UNV-1/3-EB	2x2, 3 Lamp, 17W T8, Perf Diffuser w/ White Overlay, Universal Electronic Ballast		✓	
782343294994	2AVG232-PMW-UNV-1/2-EB10I	2x4, 2 Lamp, 32W T8, Perf Diffuser w/ White Overlay, Universal Electronic Ballast		✓	
782343254271	2AVG328-PMW-UNV-1/3-EB	2x4, 3 Lamp, 28W T5, Perf Diffuser w/ White Overlay, Universal Electronic Ballast		✓	
734340750126	2AVG332-PMW-UNV-1/21-EB	2x4, 3 Lamp, 32W T8, Perf Diffuser w/ White Overlay, Universal Electronic Ballast	✓		C
734340840599	2AVG332-PMW-UNV-1/3-EB	2x4, 3 Lamp, 32W T8, Perf Diffuser w/ White Overlay, Universal Electronic Ballast	✓		C
734340607710	AVHD	Grid Clip For Arioso Recessed (4 each)	✓		C



## HP90 LED Recessed

UPC CODE	CATALOG NUMBER	DESCRIPTION	SERVICE SMART	SPEC SMART	STOCKED IN
734340132793	HLS14GLR28L35ULAG	1x4, 2800lm, 3500K, Acrylic Linear Prismatic Lens, Universal Electronic Driver		✓	
734340119350	HLS22GLR28L35ULAG	2x2, 2800lm, 3500K, Acrylic Linear Prismatic Lens, Universal Electronic Driver		✓	
734340132847	HLS22GLR34L35ULAG	2x2, 3400lm, 3500K, Acrylic Linear Prismatic Lens, Universal Electronic Driver		✓	
734340132854	HLS24GLR30L35ULAG	2x4, 3000lm, 3500K, Acrylic Linear Prismatic Lens, Universal Electronic Driver		✓	
781370050375	HLS24GLR41L35ULAG	2x4, 4100lm, 3500K, Acrylic Linear Prismatic Lens, Universal Electronic Driver		✓	



## HP90 Recessed

UPC CODE	CATALOG NUMBER	DESCRIPTION	SERVICE SMART	SPEC SMART	STOCKED IN
783238200229	H9S1GLR232UNVHI	1x4, 2 Lamp, 32W T8, Acrylic Linear Prismatic Lens, Universal Electronic Ballast		✓	
782343917701	H9S2GLR214UNVPG	2x2, 2 Lamp, 14W T5, Acrylic Linear Prismatic Lens, Universal Electronic Ballast	✓		F
734340151039	H9A2GLR217UNVHIE1	2x2, 2 Lamp, 17W T8, Acrylic Linear Prismatic Lens, Air Return Option, Universal Electronic Ballast		✓	
782343917664	H9S2GLR217UNVHI	2x2, 2 Lamp, 17W T8, Acrylic Linear Prismatic Lens, Universal Electronic Ballast	✓		C,N,F
782343917671	H9S2GLR224UNVPG	2x2, 2 Lamp, 25W T5HO, Acrylic Linear Prismatic Lens, Universal Electronic Ballast	✓		C,N,F
782343917633	H9S2GLR228UNVPG	2x4, 2 Lamp, 28W T5, Acrylic Linear Prismatic Lens, Universal Electronic Ballast	✓		C,N,F
782343917626	H9S2GLR232UNVHI	2x4, 2 Lamp, 32W T8, Acrylic Linear Prismatic Lens, Universal Electronic Ballast	✓		N,F
734340150971	H9A2GLR232UNVHIE1	2x4, 2 Lamp, 32W T8, Acrylic Linear Prismatic Lens, Air Return Option, Universal Electronic Ballast		✓	

\*C= Carrollton, Texas    F= Fontana, California    N= Norwich, Connecticut

“•” beside a blue catalog number indicates item is a recommended distributor shelf stock item.

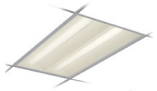
Pictures are representative of product categories and may not illustrate the exact products listed on the pages of this guide.

Product information may change without notice. Contact your local Philips sales representative for additional product information.



## Attune Recessed

UPC CODE	CATALOG NUMBER	DESCRIPTION	SERVICE SMART	SPEC SMART	STOCKED IN
781370591335	2ATNG217-PMW-UNV-1/2-EB	2x2, 2 Lamp, 17W T8, Round Perf Diffuser w/ White Overlay, Universal Electronic Ballast		✓	
781370831844	2ATNG228-D-UNV-1/2-EB	2x4, 2 Lamp, 28W T5, Smooth Diffuser; Universal Electronic Ballast		✓	
781370828950	2ATNG232-PMW-UNV-1/2-EB	2x4, 2 Lamp, 32W T8, Round Perf Diffuser w/ White Overlay, Universal Electronic Ballast		✓	



## HVA Recessed

UPC CODE	CATALOG NUMBER	DESCRIPTION	SERVICE SMART	SPEC SMART	STOCKED IN
782343652138	2HVAG214-D-UNV-1/2-EB	2x2, 2 Lamp, 14W T5, Opal Diffuser; Universal Electronic Ballast		✓	
782343527092	2HVAG217-D-UNV-1/2-EB	2x2, 2 Lamp, 17W T8, Opal Diffuser; Universal Electronic Ballast	✓		N
782343332184	<a href="#">2HVAG217-D-UNV-1/2-EB-LPT735</a> ●	2x2, 2 Lamp, 17W T8, Opal Diffuser; Universal Electronic Ballast, w/ 735 Lamps		✓	
782343527344	2HVAG228-D-UNV-1/2-EB	2x4, 2 Lamp, 28W T5, Opal Diffuser; Universal Electronic Ballast	✓		N
782343517345	<a href="#">2HVAG228-D-UNV-1/2-EB-LPT835</a> ●	2x4, 2 Lamp, 28W T5, Opal Diffuser; Universal Electronic Ballast, w/ 835 Lamps	✓		C,F
782343422755	2HVAG232-D-UNV-1/2-EB	2x4, 2 Lamp, 32W T8, Opal Diffuser; Universal Electronic Ballast		✓	
782343332160	<a href="#">2HVAG232-D-UNV-1/2-EB-LPT735</a> ●	2x4, 2 Lamp, 32W T8, Opal Diffuser; Universal Electronic Ballast, w/ 735 Lamps	✓		C,N,F

\*C= Carrollton, Texas      F= Fontana, California      N= Norwich, Connecticut

“●” beside a blue catalog number indicates item is a recommended distributor shelf stock item.

Pictures are representative of product categories and may not illustrate the exact products listed on the pages of this guide.

Product information may change without notice. Contact your local Philips sales representative for additional product information.



## DualLED LED Recessed

UPC CODE	CATALOG NUMBER	DESCRIPTION	SERVICE SMART	SPEC SMART	STOCKED IN
781370169817	1DLG27L835-4-D-UNV-DIM	1x4, 2700lm, 3500K, Opal Diffuser, Universal Electronic 0-10V Dimming Driver	✓		N
781370181307	2DLG27L840-2-D-UNV-DIM	2x2, 2700lm, 4000K, Opal Diffuser, Universal Electronic 0-10V Dimming Driver		✓	
782343815472	2DLG34L835-2-D-UNV-DIM	2x2, 3400lm, 3500K, Opal Diffuser, Universal Electronic 0-10V Dimming Driver	✓		N
782343751732	2DLG34L840-2-D-UNV-DIM	2x2, 3400lm, 4000K, Opal Diffuser, Universal Electronic 0-10V Dimming Driver		✓	
782343882276	2DLG38L835-2-D-UNV-DIM	2x2, 3800lm, 3500K, Opal Diffuser, Universal Electronic 0-10V Dimming Driver		✓	
782343781098	2DLG38L840-2-D-UNV-DIM	2x2, 3800lm, 4000K, Opal Diffuser, Universal Electronic 0-10V Dimming Driver		✓	
782343873267	2DLG44L835-2-D-UNV-DIM	2x2, 4400lm, 3500K, Opal Diffuser, Universal Electronic 0-10V Dimming Driver		✓	
782343743591	2DLG44L840-2-D-UNV-DIM	2x2, 4400lm, 4000K, Opal Diffuser, Universal Electronic 0-10V Dimming Driver		✓	
782343815458	2DLG43L835-4-D-UNV-DIM	2x4, 4300lm, 3500K, Opal Diffuser, Universal Electronic 0-10V Dimming Driver		✓	
782343814710	2DLG43L840-4-D-UNV-DIM	2x4, 4300lm, 4000K, Opal Diffuser, Universal Electronic 0-10V Dimming Driver		✓	
782343841167	2DLG49L835-4-D-UNV-DIM	2x4, 4900lm, 3500K, Opal Diffuser, Universal Electronic 0-10V Dimming Driver	✓		N
782343786635	2DLG49L840-4-D-UNV-DIM	2x4, 4900lm, 4000K, Opal Diffuser, Universal Electronic 0-10V Dimming Driver		✓	
782343947043	2DLG58L835-4-D-UNV-DIM	2x4, 5800lm, 3500K, Opal Diffuser, Universal Electronic 0-10V Dimming Driver		✓	
782343496763	2DLG58L840-4-D-UNV-DIM	2x4, 5800lm, 4000K, Opal Diffuser, Universal Electronic 0-10V Dimming Driver		✓	
782343820230	2DLG73L835-4-D-UNV-DIM	2x4, 7300lm, 3500K, Opal Diffuser, Universal Electronic 0-10V Dimming Driver		✓	
782343786628	2DLG73L840-4-D-UNV-DIM	2x4, 7300lm, 4000K, Opal Diffuser, Universal Electronic 0-10V Dimming Driver		✓	



## DayLine LED Recessed

UPC CODE	CATALOG NUMBER	DESCRIPTION	SERVICE SMART	SPEC SMART	STOCKED IN
734340085808	2CLG30L835-2-D-UNV	2x2, 3000lm, 3500K, Opal Diffuser, Universal Electronic Driver	✓		C
734340085839	2CLG30L835-2-D-UNV-DIM	2x2, 3000lm, 3500K, Opal Diffuser, Universal Electronic 0-10V Dimming Driver	✓		C
734340085778	2CLG30L840-2-D-UNV	2x2, 3000lm, 4000K, Opal Diffuser, Universal Electronic Driver	✓		C
734340085792	2CLG30L840-2-D-UNV-DIM	2x2, 3000lm, 4000K, Opal Diffuser, Universal Electronic 0-10V Dimming Driver	✓		C
781370060275	2CLG36L835-2-D-UNV	2x2, 3600lm, 3500K, Opal Diffuser, Universal Electronic Driver	✓		C
781370146740	2CLG36L835-2-D-UNV-DIM	2x2, 3600lm, 3500K, Opal Diffuser, Universal Electronic 0-10V Dimming Driver	✓		C
734340085877	2CLG36L840-2-D-UNV	2x2, 3600lm, 4000K, Opal Diffuser, Universal Electronic Driver	✓		C
781370028145	2CLG36L840-2-D-UNV-DIM	2x2, 3600lm, 4000K, Opal Diffuser, Universal Electronic 0-10V Dimming Driver	✓		C
734340085914	2CLG41L835-4-D-UNV	2x4, 4100lm, 3500K, Opal Diffuser, Universal Electronic Driver	✓		C
781370146658	2CLG41L835-4-D-UNV-DIM	2x4, 4100lm, 3500K, Opal Diffuser, Universal Electronic 0-10V Dimming Driver	✓		C
781370047054	2CLG41L840-4-D-UNV	2x4, 4100lm, 4000K, Opal Diffuser, Universal Electronic Driver	✓		C
734340085884	2CLG41L840-4-D-UNV-DIM	2x4, 4100lm, 4000K, Opal Diffuser, Universal Electronic 0-10V Dimming Driver	✓		C
734340086065	2CLG54L835-4-D-UNV	2x4, 5400lm, 3500K, Opal Diffuser, Universal Electronic Driver	✓		C
734340086089	2CLG54L835-4-D-UNV-DIM	2x4, 5400lm, 3500K, Opal Diffuser, Universal Electronic 0-10V Dimming Driver	✓		C
734340086003	2CLG54L840-4-D-UNV	2x4, 5400lm, 4000K, Opal Diffuser, Universal Electronic Driver	✓		C
781370028299	2CLG54L840-4-D-UNV-DIM	2x4, 5400lm, 4000K, Opal Diffuser, Universal Electronic 0-10V Dimming Driver	✓		C

\*C= Carrollton, Texas    F= Fontana, California    N= Norwich, Connecticut

“•” beside a blue catalog number indicates item is a recommended distributor shelf stock item.

Pictures are representative of product categories and may not illustrate the exact products listed on the pages of this guide.

Product information may change without notice. Contact your local Philips sales representative for additional product information.



## SofTrace Recessed

UPC CODE	CATALOG NUMBER	DESCRIPTION	SERVICE SMART	SPEC SMART	STOCKED IN
782343150061	1STG232-PMW-UNV-1/2-EB	1x4, 2 Lamp, 32W T8, Round Perf Diffuser w/ White Overlay; Universal Electronic Ballast		✓	
782343096550	2STG214-DS-UNV-1/2-EB	2x2, 2 Lamp, 14W T5, Smooth Opal Diffuser; Universal Electronic Ballast		✓	
734340428261	2STG214-PMW-UNV-1/2-EB	2x2, 2 Lamp, 14W T5, Round Perf Diffuser w/ White Overlay; Universal Electronic Ballast		✓	
782343202692	2STG217-DS-UNV-1/2-EB	2x2, 2 Lamp, 17W T8, Smooth Opal Diffuser; Universal Electronic Ballast		✓	
734340154139	2STG217-D-UNV-1/2-EB	2x2, 2 Lamp, 17W T8, Ribbed Opal Diffuser; Universal Electronic Ballast	✓		C
734340007206	<b>2STG217-D-UNV-1/2-EB-LPT735</b> ●	2x2, 2 Lamp, 17W T8, Ribbed Opal Diffuser; Universal Electronic Ballast, w/ 735 Lamps	✓		C
734340182774	2STG217-PMW-UNV-1/2-EB	2x2, 2 Lamp, 17W T8, Round Perf Diffuser w/ White Overlay; Universal Electronic Ballast		✓	
782343340288	2STG2CF40-DS-UNV-1/2-EB	2x2, 2 Lamp, 40W TT5, Smooth Opal Diffuser; Universal Electronic Ballast		✓	
734340000795	2STG2CF40-D-UNV-1/2-EB	2x2, 2 Lamp, 40W TT5, Ribbed Opal Diffuser; Universal Electronic Ballast		✓	
782343096543	2STG228-DS-UNV-1/2-EB	2x4, 2 Lamp, 28W T5, Smooth Opal Diffuser; Universal Electronic Ballast		✓	
734340134155	2STG228-D-UNV-1/2-EB	2x4, 2 Lamp, 28W T5, Ribbed Opal Diffuser; Universal Electronic Ballast	✓		C
734340072617	<b>2STG228-D-UNV-1/2-EB95-LPT835</b> ●	2x4, 2 Lamp, 28W T5, Ribbed Opal Diffuser; Universal Electronic Ballast, w/ 835 Lamps	✓		C
734340125047	2STG228-PMW-UNV-1/2-EB	2x4, 2 Lamp, 28W T5, Round Perf Diffuser w/ White Overlay; Universal Electronic Ballast		✓	
782343202685	2STG232-DS-UNV-1/2-EB	2x4, 2 Lamp, 32W T8, Smooth Opal Diffuser; Universal Electronic Ballast		✓	
782343395363	2STG232-DS-UNV-1/2-EB10R	2x4, 2 Lamp, 32W T8, Smooth Opal Diffuser; Universal Electronic Ballast		✓	
781370982973	2STG232-D-UNV-1/2-EB	2x4, 2 Lamp, 32W T8, Ribbed Opal Diffuser; Universal Electronic Ballast	✓		C
734340138313	2STG232-D-UNV-1/2-EB10R	2x4, 2 Lamp, 32W T8, Ribbed Opal Diffuser; Universal Electronic Ballast		✓	
734340289107	2STG232-D-UNV-1/2-EBSD	2x4, 2 Lamp, 32W T8, Ribbed Opal Diffuser; Universal Electronic Ballast	✓		C
734340239836	2STG232-PMW-UNV-1/2-EB10R	2x4, 2 Lamp, 32W T8, Round Perf Diffuser w/ White Overlay; Universal Electronic Ballast		✓	
782343717271	2STG254HO-DS-UNV-1/2-EB	2x4, 2 Lamp, 54W T5HO, Smooth Opal Diffuser; Universal Electronic Ballast		✓	
734340041408	2STG254HO-D-UNV-1/2-EB	2x4, 2 Lamp, 54W T5HO, Ribbed Opal Diffuser; Universal Electronic Ballast		✓	

\*C= Carrollton, Texas      F= Fontana, California      N= Norwich, Connecticut

“●” beside a blue catalog number indicates item is a recommended distributor shelf stock item.

Pictures are representative of product categories and may not illustrate the exact products listed on the pages of this guide.

Product information may change without notice. Contact your local Philips sales representative for additional product information.

# Troffer



## SP Recessed

UPC CODE	CATALOG NUMBER	DESCRIPTION	SERVICE SMART	SPEC SMART	STOCKED IN
781370668433	2SPG217R-FS12-UNV-1/2-EB	2x2, 2 Lamp, 17W T8, Flat Steel Door Frame, Pattern 12 Prismatic Acrylic Lens, Universal Electronic Ballast		✓	
782343810057	2SPG314R-FS12-UNV-1/3-EB	2x2, 3 Lamp, 14W T5, Flat Steel Door Frame, Pattern 12 Prismatic Acrylic Lens, Universal Electronic Ballast		✓	
781370793807	2SPG317R-FS12-UNV-1/3-EB	2x2, 3 Lamp, 17W T8, Flat Steel Door Frame, Pattern 12 Prismatic Acrylic Lens, Universal Electronic Ballast		✓	
734340321647	2SPG228-FS12-UNV-1/2-EB	2x4, 2 Lamp, 28W T5, Flat Steel Door Frame, Pattern 12 Prismatic Acrylic Lens, Universal Electronic Ballast		✓	
734340954579	2SPG232-FS12-UNV-1/2-EB	2x4, 2 Lamp, 32W T8, Flat Steel Door Frame, Pattern 12 Prismatic Acrylic Lens, Universal Electronic Ballast		✓	
782343173787	2SPG328-FS12-UNV-1/3-EB	2x4, 3 Lamp, 28W T5, Flat Steel Door Frame, Pattern 12 Prismatic Acrylic Lens, Universal Electronic Ballast		✓	
782343339152	2SPG332-FS12-UNV-1/3-EB	2x4, 3 Lamp, 32W T8, Flat Steel Door Frame, Pattern 12 Prismatic Acrylic Lens, Universal Electronic Ballast		✓	
781370713430	2SPG432-FS12-UNV-1/4-EB10R	2x4, 4 Lamp, 32W T8, Flat Steel Door Frame, Pattern 12 Prismatic Acrylic Lens, Universal Electronic Ballast		✓	



## SpecPlus LED Recessed

UPC CODE	CATALOG NUMBER	DESCRIPTION	SERVICE SMART	SPEC SMART	STOCKED IN
781370026424	SPS22GFSVA33A35ULAG	2x2, 3300lm, 3500K, Flat Steel Door Frame, Pattern 12 Prismatic Acrylic Lens, Universal Electronic Driver		✓	
781370040970	SPS22GFSVA38A35ULAG	2x2, 3800lm, 3500K, Flat Steel Door Frame, Pattern 12 Prismatic Acrylic Lens, Universal Electronic Driver		✓	
781370071141	SPS24GFSVA33A35ULAG	2x4, 3300lm, 3500K, Flat Steel Door Frame, Pattern 12 Prismatic Acrylic Lens, Universal Electronic Driver		✓	
781370071288	SPS24GFSVA37A35ULAG	2x4, 3700lm, 3500K, Flat Steel Door Frame, Pattern 12 Prismatic Acrylic Lens, Universal Electronic Driver		✓	
781370071318	SPS24GFSVA43A35ULAG	2x4, 4300lm, 3500K, Flat Steel Door Frame, Pattern 12 Prismatic Acrylic Lens, Universal Electronic Driver		✓	

\*C= Carrollton, Texas    F= Fontana, California    N= Norwich, Connecticut

“•” beside a blue catalog number indicates item is a recommended distributor shelf stock item.

Pictures are representative of product categories and may not illustrate the exact products listed on the pages of this guide.

Product information may change without notice. Contact your local Philips sales representative for additional product information.



## SpecPlus Recessed

UPC CODE	CATALOG NUMBER	DESCRIPTION	SERVICE SMART	SPEC SMART	STOCKED IN
782343967089	SPS1GFSVA232UNVHI	1x4, 2 Lamp, 32W T8, Flat Steel Door Frame, Pattern 12 Prismatic Acrylic Lens, Universal Electronic Ballast		✓	
782343478967	SPS2GFSVI217UNVHI	2x2, 2 Lamp, 17W T8, Flat Steel Door Frame, Pattern 12 Prismatic Acrylic Lens, Universal Electronic Ballast		✓	
782343469477	SPS2GFSVA2FT120SB QSW	2x2, 2 Lamp, 40W TT5, Flat Steel Door Frame, Pattern 12 Prismatic Acrylic Lens, 120V Electronic Ballast	✓		C
782343478936	SPS2GFSVI26UUNVHI	2x2, 2 Lamp, 31W U6 T8, Flat Steel Door Frame, Pattern 12 Prismatic Acrylic Lens, Universal Electronic Ballast		✓	
782343478882	SPS2GFSVA317UNVH3	2x2, 3 Lamp, 17W T8, Flat Steel Door Frame, Pattern 12 Prismatic Acrylic Lens, Universal Electronic Ballast		✓	
734340132939	SPS2GFSVI317UNVH3	2x2, 3 Lamp, 17W T8, Flat Steel Door Frame, Pattern 12 Prismatic Acrylic Lens, Universal Electronic Ballast		✓	
734340132892	SPS2GFSVA417UNVHI	2x2, 4 Lamp, 17W T8, Flat Steel Door Frame, Pattern 12 Prismatic Acrylic Lens, Universal Electronic Ballast		✓	
782343469552	SPS2GFSVA232UNVHI	2x4, 2 Lamp, 32W T8, Flat Steel Door Frame, Pattern 12 Prismatic Acrylic Lens, Universal Electronic Ballast	✓		C
782343476994	SPS2GFSVI232UNVHI	2x4, 2 Lamp, 32W T8, Flat Steel Door Frame, Pattern 12 Prismatic Acrylic Lens, Universal Electronic Ballast	✓		C
782343500767	SPS2GFSVA332UNVH3	2x4, 3 Lamp, 32W T8, Flat Steel Door Frame, Pattern 12 Prismatic Acrylic Lens, Universal Electronic Ballast	✓		C
734340150940	SPS2GFSVA332UNVH3EM	2x4, 3 Lamp, 32W T8, Flat Steel Door Frame, Pattern 12 Prismatic Acrylic Lens, Universal Electronic Ballast	✓		N
782343469514	SPS2GFSVI332UNVH3	2x4, 3 Lamp, 32W T8, Flat Steel Door Frame, Pattern 12 Prismatic Acrylic Lens, Universal Electronic Ballast	✓		C
734340132908	SPS2GFSVA432UNVHI	2x4, 4 Lamp, 32W T8, Flat Steel Door Frame, Pattern 12 Prismatic Acrylic Lens, Universal Electronic Ballast		✓	
782343968758	SPS2GFSVA432UNVH4	2x4, 4 Lamp, 32W T8, Flat Steel Door Frame, Pattern 12 Prismatic Acrylic Lens, Universal Electronic Ballast	✓		C
734340041538	SPS2GFSVI432UNVH4	2x4, 4 Lamp, 32W T8, Flat Steel Door Frame, Pattern 12 Prismatic Acrylic Lens, Universal Electronic Ballast		✓	



## Surface Modular

UPC CODE	CATALOG NUMBER	DESCRIPTION	SERVICE SMART	SPEC SMART	STOCKED IN
734340030617	2SMR231U6-FS01-UNV-1/2-EB	2x2, 2 Lamp, 31W U6 T8, Flat Steel Door Frame, Pattern 12 Prismatic Acrylic Lens, Universal Electronic Ballast		✓	
734340030631	2SMR332-FS01-UNV-1/3-EB	2x4, 3 Lamp, 32W T8, Flat Steel Door Frame, Pattern 12 Prismatic Acrylic Lens, Universal Electronic Ballast		✓	

\*C= Carrollton, Texas      F= Fontana, California      N= Norwich, Connecticut

“•” beside a blue catalog number indicates item is a recommended distributor shelf stock item.

Pictures are representative of product categories and may not illustrate the exact products listed on the pages of this guide.

Product information may change without notice. Contact your local Philips sales representative for additional product information.



## TG8 Recessed

UPC CODE	CATALOG NUMBER	DESCRIPTION	SERVICE SMART	SPEC SMART	STOCKED IN
734340607994	1TG232-01-UNV-1/2-EB	1x4, 2 Lamp, 32W T8, Flat Steel Door Frame, Pattern 12 Prismatic Acrylic Lens, Universal Electronic Ballast	✓		C,N,F
781370989132	2TG8217R-01-UNV-1/2-EB	2x2, 2 Lamp, 17W T8, Flat Steel Door Frame, Pattern 12 Prismatic Acrylic Lens, Universal Electronic Ballast		✓	
781370943776	2TG8231U6R-01-UNV-1/2-EB	2x2, 2 Lamp, 31W U6 T8, Flat Steel Door Frame, Pattern 12 Prismatic Acrylic Lens, Universal Electronic Ballast	✓		C,N,F
781370989149	2TG8317R-01-UNV-1/3-EB	2x2, 3 Lamp, 17W T8, Flat Steel Door Frame, Pattern 12 Prismatic Acrylic Lens, Universal Electronic Ballast		✓	
734340981889	<a href="#">2TG8232-01-UNV-1/2-EB</a> ●	2x4, 2 Lamp, 32W T8, Flat Steel Door Frame, Pattern 12 Prismatic Acrylic Lens, Universal Electronic Ballast	✓		C,N,F
734340976526	<a href="#">2TG8332-01-UNV-1/21-EB</a> ●	2x4, 3 Lamp, 32W T8, Flat Steel Door Frame, Pattern 12 Prismatic Acrylic Lens, Universal Electronic Ballast	✓		C,N,F
734340976533	<a href="#">2TG8332-01-UNV-1/3-EB</a> ●	2x4, 3 Lamp, 32W T8, Flat Steel Door Frame, Pattern 12 Prismatic Acrylic Lens, Universal Electronic Ballast	✓		C,N,F
734340981896	<a href="#">2TG8332-01-UNV-1/3-EB-LPT735</a> ●	2x4, 3 Lamp, 32W T8, Flat Steel Door Frame, Pattern 12 Prismatic Acrylic Lens, Universal Electronic Ballast, w/ 735 Lamps	✓		C,N,F
781370017293	<a href="#">2TG8332-01-UNV-1/3-EB10I-LPT741</a> ●	2x4, 3 Lamp, 32W T8, Flat Steel Door Frame, Pattern 12 Prismatic Acrylic Lens, Universal Electronic Ballast, w/ 741 Lamps	✓		C
734340976540	<a href="#">2TG8332-01-UNV-1/3-EB-F1-LPT735</a> ●	2x4, 3 Lamp, 32W T8, Flat Steel Door Frame, Pattern 12 Prismatic Acrylic Lens, Universal Electronic Ballast, 6' Flex, w/ 735 Lamps	✓		C,F
782343338797	<a href="#">2TG8332-01-UNV-1/3-EB-F1-LPT741</a> ●	2x4, 3 Lamp, 32W T8, Flat Steel Door Frame, Pattern 12 Prismatic Acrylic Lens, Universal Electronic Ballast, 6' Flex, w/ 741 Lamps	✓		C
734340996661	2TG8332-01-UNV-M11-1/42-EB	2x4, 3 Lamp, 32W T8, Flat Steel Door Frame, Pattern 12 Prismatic Acrylic Lens, Universal Electronic Ballast, 11' Flex, Master Unit For Use w/ Satellite Unit		✓	
734340996678	2TG8332-01-000-S-X-1/42-EBIS	2x4, 3 Lamp, 32W T8, Flat Steel Door Frame, Pattern 12 Prismatic Acrylic Lens, Satellite Unit For Use w/ Master Unit		✓	
734340976595	<a href="#">2TG8432-01-UNV-1/4-EB</a> ●	2x4, 4 Lamp, 32W T8, Flat Steel Door Frame, Pattern 12 Prismatic Acrylic Lens, Universal Electronic Ballast	✓		C,N,F
734340996845	<a href="#">2TG8432-01-UNV-2/2-EB</a> ●	2x4, 4 Lamp, 32W T8, Flat Steel Door Frame, Pattern 12 Prismatic Acrylic Lens, Universal Electronic Ballast	✓		C,N,F
734340981902	<a href="#">2TG8432-01-UNV-1/4-EB-LPT735</a> ●	2x4, 4 Lamp, 32W T8, Flat Steel Door Frame, Pattern 12 Prismatic Acrylic Lens, Universal Electronic Ballast, w/ 735 Lamps	✓		C,N,F
734340981919	<a href="#">2TG8432-01-UNV-1/4-EB-LPT741</a> ●	2x4, 4 Lamp, 32W T8, Flat Steel Door Frame, Pattern 12 Prismatic Acrylic Lens, Universal Electronic Ballast, w/ 741 Lamps	✓		C,N,F
734340976601	<a href="#">2TG8432-01-UNV-1/4-EB-F1-LPT735</a> ●	2x4, 4 Lamp, 32W T8, Flat Steel Door Frame, Pattern 12 Prismatic Acrylic Lens, Universal Electronic Ballast, 6' Flex, w/ 735 Lamps	✓		C,F
734340976618	<a href="#">2TG8432-01-UNV-1/4-EB-F1-LPT741</a> ●	2x4, 4 Lamp, 32W T8, Flat Steel Door Frame, Pattern 12 Prismatic Acrylic Lens, Universal Electronic Ballast, 6' Flex, w/ 741 Lamps	✓		C
782343040713	TG8FS01D	2x4 Pattern 12 Prismatic Acrylic Lens Replacement	✓		C,N,F
782343297872	TG8FS01DL-5PK	2x4 Pattern 12 Prismatic Acrylic Lens Replacement, 5 Pack	✓		C,N,F

## Recessed Accessories

UPC CODE	CATALOG NUMBER	DESCRIPTION	SERVICE SMART	SPEC SMART	STOCKED IN
734340775488	FMA14	1x4 Flange Mounting Frame Assembly For Recessed Fixtures	✓		C,N,F
734340775471	FMA22	2x2 Flange Mounting Frame Assembly For Recessed Fixtures	✓		C,N,F
734340775464	FMA24	2x4 Flange Mounting Frame Assembly For Recessed Fixtures	✓		C,N,F
782343501603	GCC	Grid Clip For Recessed Fixtures (4 each)	✓		F

\*C= Carrollton, Texas    F= Fontana, California    N= Norwich, Connecticut

“●” beside a blue catalog number indicates item is a recommended distributor shelf stock item.

Pictures are representative of product categories and may not illustrate the exact products listed on the pages of this guide.

Product information may change without notice. Contact your local Philips sales representative for additional product information.

# Parabolic



## LP3 Parabolic Recessed

UPC CODE	CATALOG NUMBER	DESCRIPTION	SERVICE SMART	SPEC SMART	STOCKED IN
781370799342	1LP3GS232-26AL-UNV-1/2-EB	1x4, 2 Lamp, 32W T8, 12 Cell Semi-Specular Louver; Universal Electronic Ballast		✓	
781370321864	2LP3GC217R-33AL-UNV-1/2-EB10I	2x2, 2 Lamp, 17W T8, 9 Cell Semi-Specular Louver; Universal Electronic Ballast	✓		N
781370400361	2LP3GC217R-33AL-UNV-1/2-EB-ASC	2x2, 2 Lamp, 17W T8, 9 Cell Semi-Specular Louver; Universal Electronic Ballast, Removable Air Slot Covers	✓		N
734340941807	<b>2LP3GC231U6R-33AL-UNV-1/2-EB-ASC •</b>	2x2, 2 Lamp, 31W U6 T8, 9 Cell Semi-Specular Louver; Universal Electronic Ballast, Removable Air Slot Covers	✓		C,N,F
734340079876	<b>2LP3GS231U6R-33AL-UNV-1/2-EB •</b>	2x2, 2 Lamp, 31W U6 T8, 9 Cell Semi-Specular Louver; Universal Electronic Ballast	✓		C,N,F
781370134709	2LP3GS232-26AL-UNV-1/2-EB	2x4, 2 Lamp, 32W T8, 12 Cell Semi-Specular Louver; Universal Electronic Ballast	✓		N
782343268018	2LP3GS232-26AL-UNV-1/2-EB10I-F1-LPT735	2x4, 2 Lamp, 32W T8, 12 Cell Semi-Specular Louver; Universal Electronic Ballast, 6' Flex, w/ 735 Lamps		✓	
782343231500	2LP3GC232-26AL-UNV-1/2-EB-ASC	2x4, 2 Lamp, 32W T8, 12 Cell Semi-Specular Louver; Universal Electronic Ballast, Removable Air Slot Covers	✓		C
734340609196	2LP3GS232-36AL-UNV-1/2-EB10I	2x4, 2 Lamp, 32W T8, 18 Cell Semi-Specular Louver; Universal Electronic Ballast		✓	
734340971729	<b>2LP3GS332-36AL-UNV-1/21-EB •</b>	2x4, 3 Lamp, 32W T8, 18 Cell Semi-Specular Louver; Universal Electronic Ballast	✓		C,N,F
734340608144	2LP3GC332-36AL-UNV-1/21-EB-ASC	2x4, 3 Lamp, 32W T8, 18 Cell Semi-Specular Louver; Universal Electronic Ballast, Removable Air Slot Covers	✓		N,F
734340912517	2LP3GC332-36AL-UNV-1/21-EB-LPT735-ASC	2x4, 3 Lamp, 32W T8, 18 Cell Semi-Specular Louver; Universal Electronic Ballast, Removable Air Slot Covers, w/ 735 Lamps		✓	
734340728095	<b>2LP3GS332-36AL-UNV-1/3-EB •</b>	2x4, 3 Lamp, 32W T8, 18 Cell Semi-Specular Louver; Universal Electronic Ballast	✓		C,N,F
781370602666	2LP3GS332-36AL-UNV-1/3-EB10R	2x4, 3 Lamp, 32W T8, 18 Cell Semi-Specular Louver; Universal Electronic Ballast		✓	
781370598310	2LP3GC332-36AL-UNV-1/3-EB-ADV	2x4, 3 Lamp, 32W T8, 18 Cell Semi-Specular Louver; Universal Electronic Ballast	✓		N
734340608151	<b>2LP3GC332-36AL-UNV-1/3-EB-ASC •</b>	2x4, 3 Lamp, 32W T8, 18 Cell Semi-Specular Louver; Universal Electronic Ballast, Removable Air Slot Covers	✓		C,N,F
781370134808	<b>2LP3GS332-36AL-UNV-1/3-EB-LPT735 •</b>	2x4, 3 Lamp, 32W T8, 18 Cell Semi-Specular Louver; Universal Electronic Ballast, w/ 735 Lamps	✓		C,F
781370200565	<b>2LP3GS332-36AL-UNV-1/3-EB10I-LPT741 •</b>	2x4, 3 Lamp, 32W T8, 18 Cell Semi-Specular Louver; Universal Electronic Ballast, w/ 741 Lamps		✓	
734340985634	<b>2LP3GS332-36AL-UNV-1/3-EB-F1-LPT735 •</b>	2x4, 3 Lamp, 32W T8, 18 Cell Semi-Specular Louver; Universal Electronic Ballast, 6' Flex, w/ 735 Lamps	✓		C,F
734340608175	2LP3GC332-36AL-UNV-1/3-EB-LPT735-ASC	2x4, 3 Lamp, 32W T8, 18 Cell Semi-Specular Louver; Universal Electronic Ballast, Removable Air Slot Covers, w/ 735 Lamps		✓	
734340853544	2LP3GC332-36AL-UNV-M11-1/42-EB-ASC	2x4, 3 Lamp, 32W T8, 18 Cell Semi-Specular Louver; Removable Air Slot Covers, Universal Electronic Ballast, 11' Flex, Master Unit For Use w/ Satellite Unit		✓	
734340439021	2LP3GC332-36AL-000-S-X-1/42-EBIS-ASC	2x4, 3 Lamp, 32W T8, 18 Cell Semi-Specular Louver; Removable Air Slot Covers, Satellite Unit For Use w/ Master Unit		✓	
781370134822	2LP3GS432-48AL-UNV-1/4-EB	2x4, 4 Lamp, 32W T8, 32 Cell Semi-Specular Louver; Universal Electronic Ballast		✓	
734340458824	LP336ALD	2x4 18 Cell Semi-Specular Louver Replacement	✓		C,N,F

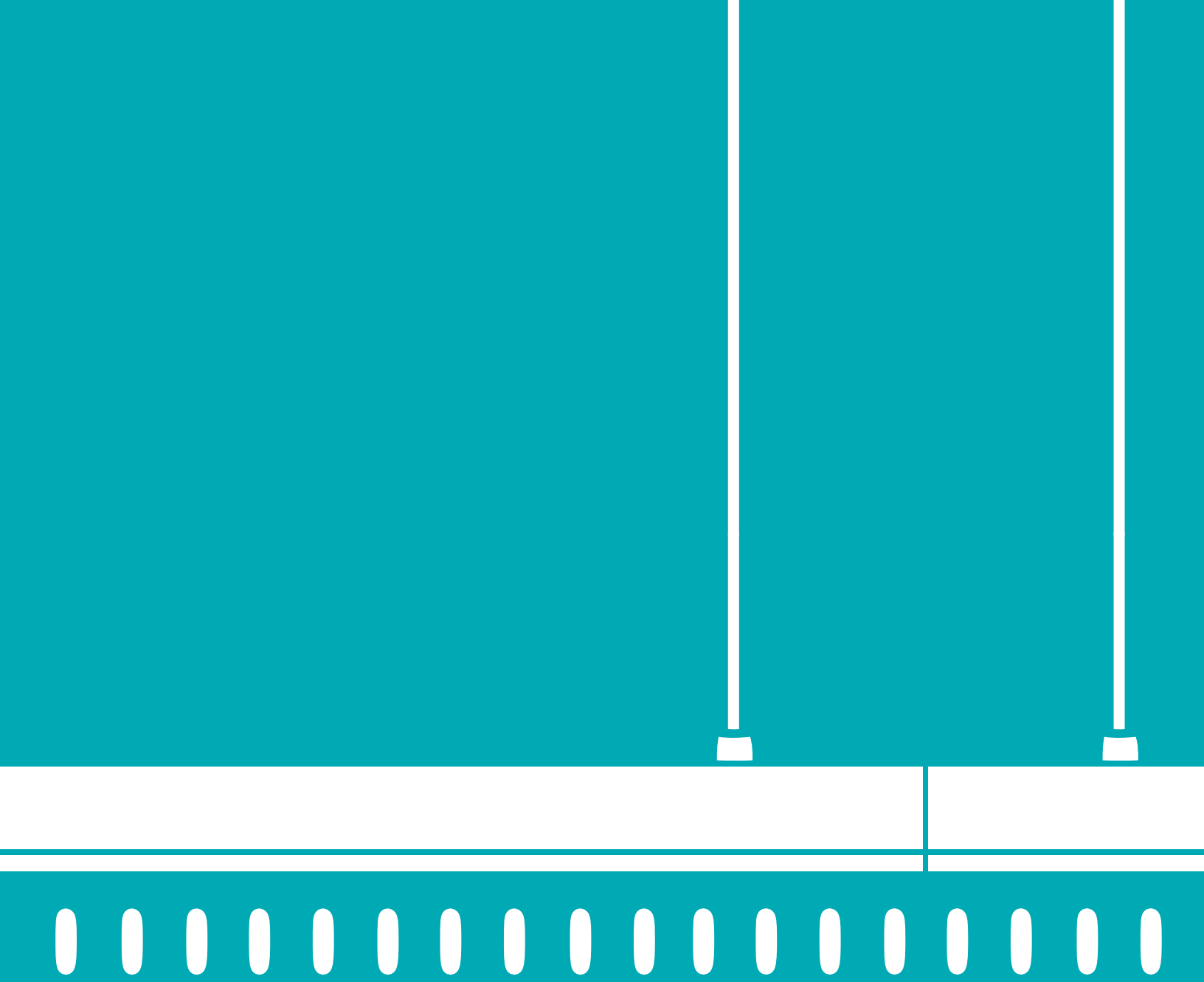
\*C= Carrollton, Texas    F= Fontana, California    N= Norwich, Connecticut

"•" beside a blue catalog number indicates item is a recommended distributor shelf stock item.

Pictures are representative of product categories and may not illustrate the exact products listed on the pages of this guide.

Product information may change without notice. Contact your local Philips sales representative for additional product information.





# Linear

---

# Linear

## Linear Wall



Cubelite Wall Bracket

UPC CODE	CATALOG NUMBER	DESCRIPTION	SERVICE SMART	SPEC SMART	STOCKED IN
734340156201	CSW224UNVHIZ0	2', 2 Lamp, 17W T8, White Housing, Opal Lens, Universal Electronic Ballast	✓		C
734340156225	CSW248UNVHIZ0	4', 2 Lamp, 32W T8, White Housing, Opal Lens, Universal Electronic Ballast	✓		C

## Wraparound



Caravel Wrap

UPC CODE	CATALOG NUMBER	DESCRIPTION	SERVICE SMART	SPEC SMART	STOCKED IN
734340608410	CAN232-UNV-1/2-EB	4', 2 Lamp, 32W T8, Narrow Housing, Universal Electronic Ballast	✓		C,N,F
734340608427	CAW332-UNV-1/21-EB	4', 3 Lamp, 32W T8, Wide Housing, Universal Electronic Ballast	✓		F
734340709353	CAW432-UNV-1/4-EB	4', 4 Lamp, 32W T8, Wide Housing, Universal Electronic Ballast	✓		C



OW Wrap

UPC CODE	CATALOG NUMBER	DESCRIPTION	SERVICE SMART	SPEC SMART	STOCKED IN
734340949810	OWN217-UNV-1/2-EB	2', 2 Lamp, 17W T8, Narrow Housing, Universal Electronic Ballast	✓		C,N,F
781370176341	OWN232-120-1/2-EB-RL	4', 2 Lamp, 32W T8, Narrow Housing, 120V Ballast For Residential Use Only		✓	
734340608281	<b>OWN232-UNV-1/2-EB •</b>	4', 2 Lamp, 32W T8, Narrow Housing, Universal Electronic Ballast	✓		C,N,F
781370715335	OWN232-UNV-1/2-EBL	4', 2 Lamp, 32W T8, Narrow Housing, Universal Electronic Ballast		✓	
734340608298	<b>OWW432-UNV-1/4-EB •</b>	4', 4 Lamp, 32W T8, Wide Housing, Universal Electronic Ballast	✓		C,N,F
734340608304	OWW432-UNV-2/2-EB	4', 4 Lamp, 32W T8, Wide Housing, Universal Electronic Ballast		✓	
734340608311	TOWN232-UNV-1/4-EB	8', 2 Lamp Tandem, 32WT8, Narrow Housing, Universal Electronic Ballast	✓		C,N,F
782343403662	OWL948-CS	Replacement Lens For OWN Wraparound	✓		C,N,F
782343403648	OWL1448-CS	Replacement Lens For OWW Wraparound	✓		C,N,F

\*C= Carrollton, Texas    F= Fontana, California    N= Norwich, Connecticut

“•” beside a blue catalog number indicates item is a recommended distributor shelf stock item.

Pictures are representative of product categories and may not illustrate the exact products listed on the pages of this guide.

Product information may change without notice. Contact your local Philips sales representative for additional product information.

## Undercabinet



### CU/SL Valueline Undercabinet

UPC CODE	CATALOG NUMBER	DESCRIPTION	SERVICE SMART	SPEC SMART	STOCKED IN
781370412845	CU158A-120-EB-LP	18", 1 Lamp, 15W T8, 120V Electronic Ballast, w/ Lamp	✓		C,F
781370412838	CU17A-120-EB-LP	24", 1 Lamp, 17W T8, 120V Electronic Ballast, w/ Lamp	✓		C,F
734340101287	CU17A-UNV-EB-LP	24", 1 Lamp, 17W T8, Universal Electronic Ballast, w/ Lamp	✓		C
781370412821	CU25A-120-EB-LP	36", 1 Lamp, 25W T8, 120V Electronic Ballast, w/ Lamp	✓		C,F
734340101355	CU25A-UNV-EB-LP	36", 1 Lamp, 25W T8, Universal Electronic Ballast, w/ Lamp	✓		C
781370412814	CU32A-120-EB-LP	48", 1 Lamp, 32W T8, 120V Electronic Ballast, w/ Lamp	✓		C,F
734340101386	CU32A-UNV-EB-LP	48", 1 Lamp, 32W T8, Universal Electronic Ballast, w/ Lamp	✓		C
734340654745	SL18-120-EB-LP	12-1/4", 1 Lamp, 8W T5, 120V Electronic Ballast, w/ Lamp	✓		C,N,F
734340654677	SL113-120-EB-LP	21-1/4", 1 Lamp, 13W T5, 120V Electronic Ballast, w/ Lamp	✓		C,F
734340654752	SL28-120-EB-LP	24-1/2", 2 Lamp, 8W T5, 120V Electronic Ballast, w/ Lamps	✓		C,F
734340654943	SL281-120-EB-LP	33-1/2", 2 Lamp, 8W T5, 13W T5, 120V Electronic Ballast, w/ Lamps	✓		C,N,F
734340655520	SL213-120-EB-LP	42-1/2", 2 Lamp, 13W T5, 120V Electronic Ballast, w/ Lamps	✓		C,N,F

## Strip



### FluxStream LED Strip

UPC CODE	CATALOG NUMBER	DESCRIPTION	SERVICE SMART	SPEC SMART	STOCKED IN
782343937198	LF4104140ULAG	4', 4100lm, 4000K, 100% Frosted Lens, Universal Electronic Driver		✓	
782343942888	LF4FR3140ULAG	4', 3100lm, 4000K, 100% Frosted Lens, Universal Electronic Driver		✓	
782343909959	LF4FR3935ULAG	4', 3900lm, 3500K, 100% Frosted Lens, Universal Electronic Driver	✓		C
782343468463	LF4FR3935USZT	4', 3900lm, 3500K, 100% Frosted Lens, Universal Electronic Step Dimming Driver	✓		F
782343476901	LF4FR3935UDZT	4', 3900lm, 3500K, 100% Frosted Lens, Universal Electronic 0-10V Dimming Driver	✓		F
782343909973	LF4FR3940ULAG	4', 3900lm, 4000K, 100% Frosted Lens, Universal Electronic Driver	✓		C
781370148560	LF4FR3940USZT	4', 3900lm, 4000K, 100% Frosted Lens, Universal Electronic Step Dimming Driver	✓		F
782343970560	LF4FR3940UDZT	4', 3900lm, 4000K, 100% Frosted Lens, Universal Electronic 0-10V Dimming Driver	✓		F
782343477960	LF8104140ULAG	8', 8200lm, 4000K, 100% Frosted Lens, Universal Electronic Driver		✓	
781370074319	LF8FR3935ULAG	8', 7800lm, 3500K, 100% Frosted Lens, Universal Electronic Driver		✓	
782343947012	LFR4FLSLD3735ULAG	FluxStream Reflector LED Strip, 4', 3700lm, 3500K, Solid Reflector; Frosted Lens, Universal Electronic Driver		✓	
782343960844	LFR4FLSLD3740ULAG	FluxStream Reflector LED Strip, 4', 3700lm, 4000K, Solid Reflector; Frosted Lens, Universal Electronic Driver		✓	



### N Narrow Strip

UPC CODE	CATALOG NUMBER	DESCRIPTION	SERVICE SMART	SPEC SMART	STOCKED IN
734340776171	N117-UNV-1/1-EB	Small Cross Section Strip, 2', 1 Lamp, 17W T8, Universal Electronic Ballast	✓		C,N,F
734340776188	N125-UNV-1/1-EB	Small Cross Section Strip, 3', 1 Lamp, 25W T8, Universal Electronic Ballast	✓		C,N,F
734340776195	<b>N132-UNV-1/1-EB</b> •	Small Cross Section Strip, 4', 1 Lamp, 32W T8, Universal Electronic Ballast	✓		C,N,F
734340752571	TN132-UNV-1/2-EB	Small Cross Section Strip, 8', 1 Lamp Tandem, 32W T8, Universal Electronic Ballast	✓		C
782343182703	NL120-120	Small Cross Section Strip, 2', 1 Lamp, 20W T12, 120V Low Power Factor Ballast	✓		C
782343182802	NL140-120	Small Cross Section Strip, 4', 1 Lamp, 20W T12, 120V Low Power Factor Ballast		✓	

\*C= Carrollton, Texas    F= Fontana, California    N= Norwich, Connecticut

“•” beside a blue catalog number indicates item is a recommended distributor shelf stock item.

Pictures are representative of product categories and may not illustrate the exact products listed on the pages of this guide.

Product information may change without notice. Contact your local Philips sales representative for additional product information.

## SV Narrow Strip T5

UPC CODE	CATALOG NUMBER	DESCRIPTION	SERVICE SMART	SPEC SMART	STOCKED IN
782343968789	SV4S128UNVPG	T5 Strip, 4', 1 Lamp, 28W T5, Universal Electronic Ballast	✓		C
782343968796	SV4S154UNVPG	T5 Strip, 4', 1 Lamp, 54W T5HO, Universal Electronic Ballast	✓		C
782343980309	SV4S228UNVPG	T5 Strip, 4', 2 Lamp, 28W T5, Universal Electronic Ballast	✓		C
782343465899	SV4S254UNVPG	T5 Strip, 4', 2 Lamp, 54W T5HO, Universal Electronic Ballast	✓		C



## SSR Staggered Strip

UPC CODE	CATALOG NUMBER	DESCRIPTION	SERVICE SMART	SPEC SMART	STOCKED IN
781370140014	SSR232-UNV-1/2-EB10I	Staggered Strip, 51", 2 Lamp, 32W T8, Universal Electronic Ballast	✓		C



## T Standard Strip

UPC CODE	CATALOG NUMBER	DESCRIPTION	SERVICE SMART	SPEC SMART	STOCKED IN
734340776201	T217-UNV-1/2-EB	Standard Strip, 2', 2 Lamp, 17W T8, Universal Electronic Ballast	✓		C,F
734340776218	T225-UNV-1/2-EB	Standard Strip, 3', 2 Lamp, 25W T8, Universal Electronic Ballast	✓		C,F
734340826272	T132-UNV-1/1-EB	Standard Strip, 4', 1 Lamp, 32W T8, Universal Electronic Ballast	✓		C,N,F
781370497842	T232-120-1/2-EB-RL	Standard Strip, 4', 2 Lamp, 32W T8, 120V Ballast For Residential Use Only	✓		F
734340608328	<b>T232-UNV-1/2-EB •</b>	Standard Strip, 4', 2 Lamp, 32W T8, Universal Electronic Ballast	✓		C,N,F
734340698688	<b>T259-UNV-1/2-EB •</b>	Standard Strip, 8', 2 Lamp, 59W T8, Universal Electronic Ballast	✓		C,N,F
782343100998	T296-120-1/2-EB	Standard Strip, 8', 2 Lamp, 75W T12 Slimline, 120V Electronic Ballast	✓		C,N,F
734340608335	TT132-UNV-1/2-EB	Standard Strip, 8', 1 Lamp Tandem, 32W T8, Universal Electronic Ballast	✓		C
734340608342	<b>TT232-UNV-1/4-EB •</b>	Standard Strip, 8', 2 Lamp Tandem, 32W T8, Universal Electronic Ballast	✓		C,N,F



## TH High Output Strip

UPC CODE	CATALOG NUMBER	DESCRIPTION	SERVICE SMART	SPEC SMART	STOCKED IN
734340661200	TH296HO-UNV-1/2-EB	High Output Strip, 8', 2 Lamp, 110W T12 800mA, Universal Electronic Ballast	✓		C,N,F

## Strip & Industrial Accessories

UPC CODE	CATALOG NUMBER	DESCRIPTION	SERVICE SMART	SPEC SMART	STOCKED IN
782343300244	CS-24	Straight Stem, 3/8" Trade Size, 24" Length	✓		C,F
782343300367	CS-36	Straight Stem, 3/8" Trade Size, 36" Length	✓		C
782343300480	CS-48	Straight Stem, 3/8" Trade Size, 48" Length	✓		C,F
782343297803	CS-400	Rigid Canopy, Use w/ 3/8" Straight Stem	✓		C
782343297902	CS-500	42 Deg Top Swivel Canopy, Use w/ 3/8" Straight Stem	✓		C,F
782343296103	CGS-4	Wire Guard, Use w/ 4' N Strip	✓		C,N,F
782343296059	CG-4	Wire Guard, Use w/ 4' T Strip, TH Strip	✓		C,N,F
782343608647	DSP-1R	Distributor Fluorescent Parts Service Pack	✓		C,N,F
782343296905	FL-111	Sliding Hanger, Use w/ Strips or Industrials	✓		C
782343299708	FL-123	5' Chain & "S" Hooks, Use w/ Strips or Industrials	✓		C
782343403464	TAR-4	4' Asymmetric Reflector For Standard T Strip	✓		C
782343810002	TSR-4	4' Symmetric Reflector For Standard T Strip	✓		C
782343810224	CTBH-2	T Strip T-Bar Hanger for 1 1/2" Mounting From Ceiling, For Shallow Channel	✓		C

\*C= Carrollton, Texas    F= Fontana, California    N= Norwich, Connecticut

"•" beside a blue catalog number indicates item is a recommended distributor shelf stock item.

Pictures are representative of product categories and may not illustrate the exact products listed on the pages of this guide.

Product information may change without notice. Contact your local Philips sales representative for additional product information.



# Industrial

---

# Industrial



## HBO/HBE High Bay

UPC CODE	CATALOG NUMBER	DESCRIPTION	SERVICE SMART	SPEC SMART	STOCKED IN
734340394634	HBO250PMT-PSC-OR	Die Cast High Bay Housing, 250W Pulse Start MH, Multi-Tap Ballast		✓	
734340394122	HBO320PMT-PSC-OR	Die Cast High Bay Housing, 320W Pulse Start MH, Multi-Tap Ballast		✓	
734340703603	<b>HBO400PMT-PSC-OR •</b>	Die Cast High Bay Housing, 400W Pulse Start MH, Multi-Tap Ballast	✓		<b>C</b>
734340703610	HBO400PMT-PSC-Q-OR	Die Cast High Bay Housing, 400W Pulse Start MH, Multi-Tap Ballast, Quartz Standby Option		✓	
734340366037	HBO400PMT-AL15-PSC-LP-OR-UP	Die Cast High Bay Housing, 400W Pulse Start MH, Multi-Tap Ballast, 15" Aluminum Reflector, Lamp Included, Unit Pack		✓	
734340330984	HBO10XMMT-OR	Die Cast High Bay Housing, 1000W MH, Multi-Tap Ballast		✓	
734340402087	<b>AL15 •</b>	Economy 15" Aluminum High Bay Reflector; Use w/ HBO High Bay	✓		<b>C,N,F</b>
782343174609	A16	16" Aluminum High Bay Reflector; Use w/ HBO High Bay, 450W Max	✓		<b>C</b>
782343174623	A17	17" Aluminum High Bay Reflector; Use w/ HBO High Bay, 450W Max		✓	
782343957462	16/17BE	Bottom Glass Enclosure, Use w/ A16 and A17 Aluminum High Bay Reflectors	✓		<b>C</b>
782343174647	A24	24" Aluminum High Bay Reflector; Use w/ HBO High Bay	✓		<b>C</b>
734340172102	24BE	Bottom Glass Enclosure, Use w/ A24 Aluminum High Bay Reflector	✓		<b>C</b>
782343174890	AR16	16" Acrylic High Bay Reflector; Use w/ HBO High Bay, 450W Max		✓	
781370265755	AR19	19" Acrylic High Bay Reflector; Use w/ HBO High Bay, 450W Max		✓	
782343356012	AR22	22" Acrylic High Bay Reflector; Use w/ HBO High Bay, 450W Max	✓		<b>C</b>
782343174944	AR25	25" Acrylic High Bay Reflector; Use w/ HBO High Bay		✓	



## Low Bay Reflector

UPC CODE	CATALOG NUMBER	DESCRIPTION	SERVICE SMART	SPEC SMART	STOCKED IN
782343174999	LR20-CS	20" Low Bay Optical Assembly, Use w/ HBO High Bay		✓	
734340014884	<b>LR23-CS •</b>	23" Low Bay Optical Assembly, Use w/ HBO High Bay	✓		<b>C,N,F</b>
734340365177	LR28-CS	28" Low Bay Optical Assembly, Use w/ HBO High Bay		✓	

\***C**= Carrollton, Texas    **F**= Fontana, California    **N**= Norwich, Connecticut

"•" beside a blue catalog number indicates item is a recommended distributor shelf stock item.

Pictures are representative of product categories and may not illustrate the exact products listed on the pages of this guide.

Product information may change without notice. Contact your local Philips sales representative for additional product information.



## LBD/LBN Low Bay

UPC CODE	CATALOG NUMBER	DESCRIPTION	SERVICE SMART	SPEC SMART	STOCKED IN
782343589526	LBN400PMT-PSC-OR	Specification Grade Low Bay Housing, 400W Pulse Start MH, Multi-Tap Ballast	✓		C
782343184752	BRA/CRA	Specification Grade 28" Low Bay Optical Assembly, Use w/ LBN Low Bay	✓		C



## LLB Low Bay

UPC CODE	CATALOG NUMBER	DESCRIPTION	SERVICE SMART	SPEC SMART	STOCKED IN
782343549131	LLB250PMT-PSC-OR	Specification Grade Low Bay Housing, 250W Pulse Start MH, Multi-Tap Ballast		✓	
782343184905	LRA	Specification Grade 20" Low Bay Optical Assembly, Use w/ LLB Low Bay		✓	

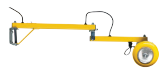
## High Bay/Low Bay Accessories

UPC CODE	CATALOG NUMBER	DESCRIPTION	SERVICE SMART	SPEC SMART	STOCKED IN
734340157468	HMR-CS •	Male Hook 3/4" NPT For HID High Bay/Low Bay	✓		C,N,F
782343184509	LMR-@PH	Male Loop 3/4" NPT For HID High Bay/Low Bay	✓		C,N
782343601105	HP12-3	Male Hook 3/4" NPT, 3' Usable Cord, Twist Lock Plug 120V AC 15 Amp, Nema L5-15P		✓	
782343601204	HP27-3	Male Hook 3/4" NPT, 3' Usable Cord, Twist Lock Plug 277V AC 15 Amp, Nema L7-15P		✓	
734340289879	SCB3-@PH	3' Ballast Safety Chain, Use w/ HID High Bay/Low Bay		✓	
734340586084	MD360	Motion Detector, 120/277V, Use w/ FBL, FBD, FBF High Bays	✓		C,F



## LED Dock Light

UPC CODE	CATALOG NUMBER	DESCRIPTION	SERVICE SMART	SPEC SMART	STOCKED IN
734340130249	ID5L32-120	Led Dock Light, 15 Watts, 32" Arm, Toggle Switch, 6' Cord And Plug, 120V	✓		C



## Incandescent Dock Light

UPC CODE	CATALOG NUMBER	DESCRIPTION	SERVICE SMART	SPEC SMART	STOCKED IN
734340081749	ID1K42-120	Incandescent Dock Light, Up To 300W, 42" Arm, Toggle Switch, 4' Cord & Plug, 120V		✓	
734340312409	ID1K42-WG	Wire Guard, Use w/ Incandescent Dock Light		✓	

\*C= Carrollton, Texas    F= Fontana, California    N= Norwich, Connecticut

“•” beside a blue catalog number indicates item is a recommended distributor shelf stock item.

Pictures are representative of product categories and may not illustrate the exact products listed on the pages of this guide.

Product information may change without notice. Contact your local Philips sales representative for additional product information.

# Industrial Linear



## IA/IS All-Purpose Industrial

UPC CODE	CATALOG NUMBER	DESCRIPTION	SERVICE SMART	SPEC SMART	STOCKED IN
734340608229	IA232-UNV-1/2-EB	Uplight Reflector; 4', 2 Lamp, 32WT8, Universal Electronic Ballast	✓		C
782343130148	IA296HO-120-1/2-EB	Uplight Reflector; 8', 2 Lamp, 110WT12 800mA, Universal Electronic Ballast		✓	
734340608243	IS232-UNV-1/2-EB •	Solid Top Reflector; 4', 2 Lamp, 32WT8, Universal Electronic Ballast	✓		C,N,F
734340028409	IS286HO-UNV-1/2-EB	Solid Top Reflector; 8', 2 Lamp, 86WT8 380mA, Universal Electronic Ballast		✓	
782343131091	IS296HO-120-1/2-EB	Solid Top Reflector; 8', 2 Lamp, 110WT12 800mA, Universal Electronic Ballast		✓	
734340608236	TIA232-UNV-1/4-EB	Uplight Reflector; 8', 2 Lamp Tandem, 32WT8, Universal Electronic Ballast	✓		C
734340608250	TIS232-UNV-1/4-EB •	Solid Top Reflector; 8', 2 Lamp Tandem, 32WT8, Universal Electronic Ballast	✓		C,N,F
782343183953	TH-2	Sliding Hanger; Use w/ IA & IS All-Purpose Industrial	✓		C
782343184103	FKR-126	Chain Hanger Set, (2) 5" Chains & "V" Hooks; Use w/ IA Industrial, IS Industrial, T Strips	✓		C,N,F
782343259009	FKR-173	Wire Guard; Use w/ IA Industrial, IS Industrial	✓		C,N,F
734340823424	IS-4R-CS	4' Solid Top Reflector For IS Industrial	✓		C



## 1FD General Purpose Industrial

UPC CODE	CATALOG NUMBER	DESCRIPTION	SERVICE SMART	SPEC SMART	STOCKED IN
781370747091	1FD228-PP-UNV-1/2-EB	10% Uplight, 4', 2 Lamp, 28W T8, Painted Reflector; Universal Electronic Ballast	✓		C
782343291238	1FD232-PP-UNV-1/2-EB	10% Uplight, 4', 2 Lamp, 32W T8, Painted Reflector; Universal Electronic Ballast		✓	



## 1F Specification Industrial

UPC CODE	CATALOG NUMBER	DESCRIPTION	SERVICE SMART	SPEC SMART	STOCKED IN
782343241295	1F232-PP-UNV-1/2-EB	10% Uplight, 4', 2 Lamp, 32W T8, Painted Reflector; Universal Electronic Ballast	✓		C
734340935455	1F332-PP-UNV-1/3-EB	10% Uplight, 4', 3 Lamp, 32W T8, Painted Reflector; Universal Electronic Ballast	✓		C,F
782343296202	FL-173	Wire Guard; Use w/ 1F Industrial, 2F Industrial, 1FD Industrial	✓		C,N



## FBL LED High Bay

UPC CODE	CATALOG NUMBER	DESCRIPTION	SERVICE SMART	SPEC SMART	STOCKED IN
781370101893	FBL16LL40-UNV-CS	Led High Bay, 16,000lm, 4000K, Universal Electronic Driver	✓		C
781370101879	FBL24LL40-UNV-CS	Led High Bay, 24,000lm, 4000K, Universal Electronic Driver	✓		C

\*C= Carrollton, Texas    F= Fontana, California    N= Norwich, Connecticut  
 "•" beside a blue catalog number indicates item is a recommended distributor shelf stock item.  
 Pictures are representative of product categories and may not illustrate the exact products listed on the pages of this guide.  
 Product information may change without notice. Contact your local Philips sales representative for additional product information.





## FBD Fluorescent High Bay

UPC CODE	CATALOG NUMBER	DESCRIPTION	SERVICE SMART	SPEC SMART	STOCKED IN
782343199558	<b>FBD454HO-UNV-1/4-EB-2LS •</b>	4 Lamp, 54W T5HO, Universal Electronic Ballast, Two Level Switching Option	✓		C,N,F
782343393406	<b>FBD632-UNV-1/42-EB •</b>	6 Lamp, 32W T8, Universal Electronic Ballast, Two Level Switching Option	✓		C,N,F
782343366097	FBD632-UNV-1/42-EBH	6 Lamp, 32W T8, Universal Electronic High Ballast Factor Ballast, Two Level Switching Option	✓		C
782343264003	<b>FBD654HO-UNV-1/42-EB •</b>	6 Lamp, 54W T5HO, Universal Electronic Ballast, Two Level Switching Option	✓		C,N,F
782343829615	FBD-4E-1W	Door Frame and Clear Lens Assembly, Use w/ 4 Lamp Fbd High Bay	✓		C,N
782343829653	FBD-6E-1W	Door Frame and Clear Lens Assembly, Use w/ 6 Lamp FBD High Bay	✓		C,N
782343829592	WG-FBD4	Wire Guard, Use w/ 4 Lamp FBD	✓		C,N
782343829608	WG-FBD6	Wire Guard, Use w/ 6 Lamp FBD	✓		C,N



## FBF Fluorescent High Bay

UPC CODE	CATALOG NUMBER	DESCRIPTION	SERVICE SMART	SPEC SMART	STOCKED IN
781370809348	FBF454HO-UNV-1/4-EB-2LS-U	4 Lamp, 54W T5HO, Universal Electronic Ballast, Two Level Switching Option, Uplight Option	✓		C
781370943424	FBF632-UNV-1/42-EBH-U	6 Lamp, 32W T8, Universal Electronic High Ballast Factor Ballast, Two Level Switching Option, Uplight Option	✓		C
781370550103	FBF654HO-UNV-1/42-EB-U	6 Lamp, 32W T8, Universal Electronic Ballast, Two Level Switching Option, Uplight Option	✓		C
781370531225	<b>FBF/FBE CHAIN KIT •</b>	54" Chain/Hanger Kit, Use w/ FBL, FBD, FBF High High Bays	✓		C,N,F
781370899813	FBF/FBE-GRIP5	5' Gripple Hanger Kit, Use w/ FBL, FBD, FBF High Bays	✓		C
781370988838	FBF/FBE-GRIP10	10' Gripple Hanger Kit, Use w/ FBL, FBD, FBF High Bays		✓	
781370476618	FBF-4E-1W	Door Frame and Clear Lens Assembly, Use w/ 4 Lamp FBF High Bay	✓		C
781370476632	FBF-6E-1W	Door Frame and Clear Lens Assembly, Use w/ 6 Lamp FBF High Bay	✓		C
781370460723	WG-FBF4	Wire Guard, Use w/ 4 Lamp FBF High Bay or FBL High Bay	✓		C
781370460730	WG-FBF6	Wire Guard, Use w/ 6 Lamp FBF High Bay	✓		C

\*C= Carrollton, Texas    F= Fontana, California    N= Norwich, Connecticut

“•” beside a blue catalog number indicates item is a recommended distributor shelf stock item.

Pictures are representative of product categories and may not illustrate the exact products listed on the pages of this guide.

Product information may change without notice. Contact your local Philips sales representative for additional product information.



## Vaporlume LED

UPC CODE	CATALOG NUMBER	DESCRIPTION	SERVICE SMART	SPEC SMART	STOCKED IN
782343494479	DWAE27L840-2-UNV	Wet Location Industrial, High Impact Acrylic Lens, Plastic Latches, 2', 2700lm, 4000K, Universal Electronic Driver	✓		C
782343500699	DWAE51L840-4-UNV-CS	Wet Location Industrial, High Impact Acrylic Lens, Plastic Latches, 4', 5100lm, 4000K, Universal Electronic Driver	✓		C
782343488362	DWAE65L840-4-UNV	Wet Location Industrial, High Impact Acrylic Lens, Plastic Latches, 4', 6500lm, 4000K, Universal Electronic Driver	✓		C,N



## Vaporlume

UPC CODE	CATALOG NUMBER	DESCRIPTION	SERVICE SMART	SPEC SMART	STOCKED IN
734340608267	DWAE232-UNV-1/2-EB •	Wet Location Industrial, High Impact Acrylic Lens, Plastic Latches, 4', 2 Lamp, 32W T8, Universal Electronic Ballast	✓		C,N,F
734340432558	DWAE296HO-120-1/2-EB	Wet Location Industrial, High Impact Acrylic Lens, Plastic Latches, 8', 2 Lamp, 110W T12 800mA, Universal Electronic Ballast		✓	
734340608274	TDWAE232-UNV-1/4-EB	Wet Location Industrial, High Impact Acrylic Lens, Plastic Latches, 8', 2 Lamp Tandem, 32W T8, Universal Electronic Ballast	✓		C,N,F
734340374599	TBK	Top Bracket Kit For DWAE Industrial	✓		C,F
734340374667	V2/DW-4ARL-CS	4' Replacement Acrylic Lens For DWAE Industrial	✓		C
734340374704	V2/DW-8ARL	8' Replacement Acrylic Lens For DWAE Industrial	✓		C

\*C= Carrollton, Texas      F= Fontana, California      N= Norwich, Connecticut

A large dot "•" beside a blue catalog number indicates item is a suggested stock item.

Pictures are representative of product categories and may not illustrate the exact products listed on the pages of this guide.

Product information may change without notice. Contact your local Philips sales representative for additional product information.



# Exit/Emergency

---

# Exit/Emergency

## Exit Signs



### 44R Line Edge-Lit

UPC CODE	CATALOG NUMBER	DESCRIPTION	SERVICE SMART	SPEC SMART	STOCKED IN
734340234138	44RL1G	Surface Mount, AC Only, Single Face, Green Letters, Clear Background, Satin Aluminum Housing	✓		C, F
734340234114	44RL1R	Surface Mount, AC Only, Single Face, Red Letters, Clear Background, Satin Aluminum Housing	✓		C, F
734340234145	44RL2G	Surface Mount, AC Only, Double Face, Green Letters, Mirror Background, Satin Aluminum Housing	✓		C
734340234121	44RL2R	Surface Mount, AC Only, Double Face, Red Letters, Mirror Background, Satin Aluminum Housing	✓		C, F
734340234510	44RLU1G •	Universal Mount, AC Only, Single Face, Green Letters, Clear Background, Satin Aluminum Housing	✓		C, F
782343026403	44RLU1GM	Universal Mount, AC Only, Single Face, Green Letters, Mirror Background, Satin Aluminum Housing	✓		C
734340234497	44RLU1R •	Universal Mount, AC Only, Single Face, Red Letters, Clear Background, Satin Aluminum Housing	✓		C, N, F
734340234640	44RLU1R2C	Universal Mount, AC Only, Single Face, Red Letters, Clear Background, Satin Aluminum Housing, 2 Circuit Input	✓		C, F
782343026373	44RLU1RM	Universal Mount, AC Only, Single Face, Red Letters, Mirror Background, Satin Aluminum Housing	✓		C
734340234619	44RLU1WG	Universal Mount, AC Only, Single Face, Green Letters, Clear Background, White Housing	✓		C, F
734340234534	44RLU1WR	Universal Mount, AC Only, Single Face, Red Letters, Clear Background, White Housing	✓		C, F
734340234527	44RLU2G •	Universal Mount, AC Only, Double Face, Green Letters, Mirror Background, Satin Aluminum Housing	✓		C, F
734340234503	44RLU2R •	Universal Mount, AC Only, Double Face, Red Letters, Mirror Background, Satin Aluminum Housing	✓		C, N, F
734340234633	44RLU2WG	Universal Mount, AC Only, Double Face, Green Letters, Mirror Background, White Housing	✓		C, F
734340234558	44RLU2WR	Universal Mount, AC Only, Double Face, Red Letters, Mirror Background, White Housing	✓		C, F
734340278071	44RRCK	Recessed Conversion Kit, AC Only, Aluminum Trim, Use w/ 44R Universal Edge Lit LED Exit	✓		C, F
734340863871	44RLP1RM	Edge Lit Exit Panel, Single Face, Red Letters, Mirror Background, For Use w/ 44R Exit	✓		C, F
734340453737	ER44RL1G	Surface Mount, Emergency Operation Nicad Battery, Single Face, Green Letters, Clear Background, Satin Aluminum Housing	✓		C, F
734340453713	ER44RL1R	Surface Mount, Emergency Operation Nicad Battery, Single Face, Red Letters, Clear Background, Satin Aluminum Housing	✓		C, F
734340453799	ER44RL2G	Surface Mount, Emergency Operation Nicad Battery, Double Face, Green Letters, Mirror Background, Satin Aluminum Housing		✓	
734340453720	ER44RL2R	Surface Mount, Emergency Operation Nicad Battery, Double Face, Red Letters, Mirror Background, Satin Aluminum Housing	✓		C, F
734340234404	ER44RLDU1G •	Universal Mount, Emergency Operation Nicad Battery, Single Face, Green Letters, Clear Background, Satin Aluminum Housing	✓		C, F

\*C= Carrollton, Texas    F= Fontana, California    N= Norwich, Connecticut

“•” beside a blue catalog number indicates item is a recommended distributor shelf stock item.

Pictures are representative of product categories and may not illustrate the exact products listed on the pages of this guide.

Product information may change without notice. Contact your local Philips sales representative for additional product information.

## 44R Line Edge-Lit continued

782343026410	ER44RLDU1GM	Universal Mount, Emergency Operation Nicad Battery, Single Face, Green Letters, Mirror Background, Satin Aluminum Housing	✓		C,N,F
734340234367	<b>ER44RLDU1R</b> •	Universal Mount, Emergency Operation Nicad Battery, Single Face, Red Letters, Clear Background, Satin Aluminum Housing	✓		C,N,F
782343026397	ER44RLDU1RM	Universal Mount, Emergency Operation Nicad Battery, Single Face, Red Letters, Mirror Background, Satin Aluminum Housing	✓		C,F
734340234466	ER44RLDU1WG	Universal Mount, Emergency Operation Nicad Battery, Single Face, Green Letters, Clear Background, White Housing	✓		C,F
734340234442	ER44RLDU1WR	Universal Mount, Emergency Operation Nicad Battery, Single Face, Red Letters, Clear Background, White Housing	✓		C,F
734340234411	<b>ER44RLDU2G</b> •	Universal Mount, Emergency Operation Nicad Battery, Double Face, Green Letters, Mirror Background, Satin Aluminum Housing	✓		C,F
734340234374	<b>ER44RLDU2R</b> •	Universal Mount, Emergency Operation Nicad Battery, Double Face, Red Letters, Mirror Background, Satin Aluminum Housing	✓		C,N,F
734340234473	ER44RLDU2WG	Universal Mount, Emergency Operation Nicad Battery, Double Face, Green Letters, Mirror Background, White Housing	✓		C,F
734340234459	ER44RLDU2WR	Universal Mount, Emergency Operation Nicad Battery, Double Face, Red Letters, Mirror Background, White Housing	✓		C,F
734340281323	ER44RRCK	Recessed Conversion Kit, Emergency Operation Nicad Battery, Aluminum Trim, Use w/ 44R Universal Edge Lit LED Exit	✓		C



## 45V Line Edge-Lit

UPC CODE	CATALOG NUMBER	DESCRIPTION	SERVICE SMART	SPEC SMART	STOCKED IN
781370614928	BB45VL	Back Box Rough In Section, AC Only	✓		C,F
781370621032	BB45VL2C	Back Box Rough In Section, AC Only, 2 Circuit Input	✓		C
781370518127	BBER45VXL	Back Box Rough In Section, Emergency Operation Nicad Battery	✓		C,F
782343981719	PBM6	Panel, Mirror Background	✓		C
781370630010	T45VL1GC	Trim and Panel, Ceiling Mount, AC Only, Single Face, Green Letters, Clear Background, Satin Aluminum Housing	✓		C
781370614935	T45VL1RC	Trim and Panel, Ceiling Mount, AC Only, Single Face, Red Letters, Clear Background, Satin Aluminum Housing	✓		C
781370616533	T45VL2GMLR	Trim and Panel, Ceiling Mount, AC Only, Double Face, Green Letters, Left or Right Directional Chevron, Mirror Background, Satin Aluminum Housing	✓		C
781370614966	T45VL2RMLR	Trim and Panel, Ceiling Mount, AC Only, Double Face, Red Letters, Left or Right Directional Chevron, Mirror Background, Satin Aluminum Housing	✓		C
781370518059	TER45VXL1GC	Trim and Panel, Ceiling Mount, Emergency Operation Nicad Battery, Single Face, Green Letters, Clear Background, Satin Aluminum Housing	✓		C
781370518042	TER45VXL1RC	Trim and Panel, Ceiling Mount, Emergency Operation Nicad Battery, Single Face, Red Letters, Clear Background, Satin Aluminum Housing	✓		C
781370621681	TER45VXL1RCAR	Trim and Panel, Ceiling Mount, Emergency Operation Nicad Battery, Single Face, Red Letters, Right Directional Chevron, Clear Background, Satin Aluminum Housing		✓	
781370605414	TER45VXL1RW	Trim and Panel, Ceiling Mount, Emergency Operation Nicad Battery, Single Face, Red Letters, White Background, Satin Aluminum Housing		✓	
781370605445	TER45VXL1WRC	Trim and Panel, Ceiling Mount, Emergency Operation Nicad Battery, Single Face, Red Letters, Clear Background, White Housing		✓	
781370614980	TER45VXL2GMLR	Trim and Panel, Ceiling Mount, Emergency Operation Nicad Battery, Double Face, Green Letters, Left or Right Directional Chevron, Mirror Background, Satin Aluminum Housing	✓		C,F
781370605490	TER45VXL2RM	Trim and Panel, Ceiling Mount, Emergency Operation Nicad Battery, Double Face, Red Letters, Mirror Background, Satin Aluminum Housing		✓	
781370611392	TER45VXL2RMLR	Trim and Panel, Ceiling Mount, Emergency Operation Nicad Battery, Double Face, Red Letters, Left or Right Directional Chevron, Mirror Background, Satin Aluminum Housing	✓		C
781370518080	TER45VXLW1RC	Trim and Panel, Wall Mount, Emergency Operation Nicad Battery, Single Face, Red Letters, Clear Background, Satin Aluminum Housing		✓	

\*C= Carrollton, Texas    F= Fontana, California    N= Norwich, Connecticut

“•” beside a blue catalog number indicates item is a recommended distributor shelf stock item.

Pictures are representative of product categories and may not illustrate the exact products listed on the pages of this guide.

Product information may change without notice. Contact your local Philips sales representative for additional product information.



## 46 Line Die Cast - Thin Profile

UPC CODE	CATALOG NUMBER	DESCRIPTION	SERVICE SMART	SPEC SMART	STOCKED IN
782343843239	46L1R	Universal Mount, AC Only, Single Face, Red Letters, Black Housing w/ Satin Aluminum Face		✓	
782343843246	46L2R	Universal Mount, AC Only, Double Face, Red Letters, Black Housing w/ Satin Aluminum Face		✓	



## 55 Line Die Cast Contemporary

UPC CODE	CATALOG NUMBER	DESCRIPTION	SERVICE SMART	SPEC SMART	STOCKED IN
782343842546	55L3G	Universal Mount, AC Only, Single/Double Face, Green Letters, Black Housing w/ Satin Aluminum Housing	✓		F
781370104085	55L3R •	Universal Mount, AC Only, Single/Double Face, Red Letters, Black Housing w/ Satin Aluminum Housing	✓		C,N,F
781370104092	55L3WG	Universal Mount, AC Only, Single/Double Face, Green Letters, White Housing	✓		C,F
782343390580	55L3WR •	Universal Mount, AC Only, Single/Double Face, Red Letters, White Housing	✓		C,N,F
782343842553	55L3BG	Universal Mount, AC Only, Single/Double Face, Green Letters, Black Housing	✓		C,F
782343842560	55L3BR	Universal Mount, AC Only, Single/Double Face, Red Letters, Black Housing	✓		C,F
781370104054	ER55L3G •	Universal Mount, Emergency Operation Nicad Battery, Single/Double Face, Green Letters, Black Housing w/ Satin Aluminum Face	✓		C,F
781370104047	ER55L3R •	Universal Mount, Emergency Operation Nicad Battery, Single/Double Face, Red Letters, Black Housing w/ Satin Aluminum Face	✓		C,N,F
781370104078	ER55L3WG	Universal Mount, Emergency Operation Nicad Battery, Single/Double Face, Green Letters, White Housing	✓		C,F
781370621698	ER55L3WR •	Universal Mount, Emergency Operation Nicad Battery, Single/Double Face, Red Letters, White Housing	✓		C,F
782343842874	ER55L3BG	Universal Mount, Emergency Operation Nicad Battery, Single/Double Face, Green Letters, Black Housing	✓		C,F
781370872557	ER55L3BR	Universal Mount, Emergency Operation Nicad Battery, Single/Double Face, Red Letters, Black Housing	✓		C,F
781370410100	ER55LD3G	Universal Mount, Emergency Operation Nicad Battery, Single/Double Face, Green Letters, Black Housing w/ Satin Aluminum Face	✓		F
781370410094	ER55LD3R	Universal Mount, Emergency Operation Nicad Battery, Single/Double Face, Red Letters, Black Housing w/ Satin Aluminum Face	✓		C,F
781370410124	ER55LD3WG	Universal Mount, Emergency Operation Nicad Battery, Single/Double Face, Green Letters, White Housing	✓		C,F
781370410117	ER55LD3WR	Universal Mount, Emergency Operation Nicad Battery, Single/Double Face, Red Letters, White Housing	✓		C,F
781370433079	55BPA	Aluminum Back Plate, Use w/ 55L Exit		✓	
781370042271	55BPW	White Back Plate, Use w/ 55L Exit		✓	
781370085780	55BPB	Black Back Plate, Use w/ 55L Exit		✓	
782343314494	55FAG	Face Plate, Brushed Aluminum, Green Letters, Use w/ 55L Exit		✓	
782343314463	55FAR	Face Plate, Brushed Aluminum, Red Letters, Use w/ 55L Exit		✓	
782343314500	55FWG	Face Plate, White, Green Letters, Use w/ 55L Exit		✓	
782343314470	55FWR	Face Plate, White, Red Letters, Use w/ 55L Exit		✓	
782343314524	55FBG	Face Plate, Black, Green Letters, Use w/ 55L Exit		✓	
782343314487	55FBR	Face Plate, Black, Red Letters, Use w/ 55L Exit		✓	

\*C= Carrollton, Texas    F= Fontana, California    N= Norwich, Connecticut

“•” beside a blue catalog number indicates item is a recommended distributor shelf stock item.

Pictures are representative of product categories and may not illustrate the exact products listed on the pages of this guide.

Product information may change without notice. Contact your local Philips sales representative for additional product information.



## 60 Line Wet Location

UPC CODE	CATALOG NUMBER	DESCRIPTION	SERVICE SMART	SPEC SMART	STOCKED IN
781370995416	60MLA3RW	Universal Mount, AC Only, Single Face w/Extra Faceplate, Red Letters, White Housing, White Face Plate	✓		C
781370921309	ER60MLD3RW	Universal Mount, Emergency Operation Nicad Battery, Single Face w/Extra Faceplate, Red Letters, White Housing, White Face Plate	✓		C
781370921286	ER60MLD3RB	Universal Mount, Emergency Operation Nicad Battery, Single Face w/Extra Faceplate, Red Letters, Black Housing, Black Face Plate	✓		C



## Compac Exit

UPC CODE	CATALOG NUMBER	DESCRIPTION	SERVICE SMART	SPEC SMART	STOCKED IN
734340011388	CXL3GW	Universal Mount, AC Only, Green Letters, White Thermoplastic Housing	✓		C,N,F
734340011869	CXL3GW2C	Universal Mount, AC Only, Green Letters, White Thermoplastic Housing, 2 Circuit Input		✓	
734340011326	CXL3RW	Universal Mount, AC Only, Red Letters, White Thermoplastic Housing	✓		F
734340753301	CXXL3GW	Universal Mount, Emergency Operation Nicad Battery, Green Letters, White Thermoplastic Housing	✓		C,N,F
734340753264	CXXL3RW	Universal Mount, Emergency Operation Nicad Battery, Red Letters, White Thermoplastic Housing	✓		C,N,F
734340753929	CXXL3RWDR	Universal Mount, Emergency Operation Nicad Battery, Red Letters, White Thermoplastic Housing, Damp Location Rating	✓		F
782343034330	CXL6VBXT	Battery, Use w/ CXL Compac LED Exit		✓	
782343038956	CXXLT	Transformer, Use w/ CXX Compac LED Exit		✓	

\*C= Carrollton, Texas    F= Fontana, California    N= Norwich, Connecticut

“•” beside a blue catalog number indicates item is a recommended distributor shelf stock item.

Pictures are representative of product categories and may not illustrate the exact products listed on the pages of this guide.

Product information may change without notice. Contact your local Philips sales representative for additional product information.



## Value+ Exit

UPC CODE	CATALOG NUMBER	DESCRIPTION	SERVICE SMART	SPEC SMART	STOCKED IN
782343263020	<b>VEGW</b> ●	Universal Mount, AC Only, Green Letters, White Thermoplastic Housing	✓		<b>C,N,F</b>
781370104115	VEGB	Universal Mount, AC Only, Green Letters, Black Thermoplastic Housing	✓		<b>C,F</b>
782343263006	<b>VERW</b> ●	Universal Mount, AC Only, Red Letters, White Thermoplastic Housing	✓		<b>C,N,F</b>
781370104108	VERB	Universal Mount, AC Only, Red Letters, Black Thermoplastic Housing	✓		<b>C,F</b>
782343263044	<b>VEGWEM</b> ●	Universal Mount, Emergency Operation Nicad Battery, Green Letters, White Thermoplastic Housing	✓		<b>C,N,F</b>
781370104139	VEGBEM	Universal Mount, Emergency Operation Nicad Battery, Green Letters, Black Thermoplastic Housing	✓		<b>C,F</b>
782343263037	<b>VERWEM</b> ●	Universal Mount, Emergency Operation Nicad Battery, Red Letters, White Thermoplastic Housing	✓		<b>C,N,F</b>
781370104122	VERBEM	Universal Mount, Emergency Operation Nicad Battery, Red Letters, Black Thermoplastic Housing	✓		<b>C,F</b>
781370426422	VEGWEMSD	Universal Mount, Emergency Operation Nicad Battery, Green Letters, White Thermoplastic Housing, Self-Diagnostic Circuitry	✓		<b>C,F</b>
781370414511	VERWEMSD	Universal Mount, Emergency Operation Nicad Battery, Red Letters, White Thermoplastic Housing, Self-Diagnostic Circuitry	✓		<b>C,F</b>
781370213206	VREGWEM	Universal Mount, Emergency Operation Lead Acid Battery, Green Letters, White Thermoplastic Housing, Remote Capability	✓		<b>C,F</b>
781370213190	<b>VRERWEM</b> ●	Universal Mount, Emergency Operation Lead Acid Battery, Red Letters, White Thermoplastic Housing, Remote Capability	✓		<b>C,N,F</b>



## Value+ II Exit

UPC CODE	CATALOG NUMBER	DESCRIPTION	SERVICE SMART	SPEC SMART	STOCKED IN
782343753552	<b>VXL3GW</b> ●	Universal Mount, AC Only, Green Letters, White Thermoplastic Housing		✓	
782343753545	<b>VXL3RW</b> ●	Universal Mount, AC Only, Red Letters, White Thermoplastic Housing	✓		<b>C,N,F</b>
782343753576	<b>VXL3GWEM</b> ●	Universal Mount, Emergency Operation Nicad Battery, Green Letters, White Thermoplastic Housing	✓		<b>C,N,F</b>
782343753569	<b>VXL3RWEM</b> ●	Universal Mount, Emergency Operation Nicad Battery, Red Letters, White Thermoplastic Housing	✓		<b>C,N,F</b>

\***C**= Carrollton, Texas      **F**= Fontana, California      **N**= Norwich, Connecticut

“●” beside a blue catalog number indicates item is a recommended distributor shelf stock item.

Pictures are representative of product categories and may not illustrate the exact products listed on the pages of this guide.

Product information may change without notice. Contact your local Philips sales representative for additional product information.



# Emergency Commercial



## Compac CCHX Combo Unit

UPC CODE	CATALOG NUMBER	DESCRIPTION	SERVICE SMART	SPEC SMART	STOCKED IN
734340039184	CCHX153GW	Semi-Recessed Lamp Heads, 6V 5W MR11 Lamps, Universal Mount Double Face, Green Letters, White Thermoplastic Housing		✓	
734340038507	CCHX253RW	Semi-Recessed Lamp Heads, 6V 5W MR11 Lamps, Universal Mount Double Face, Red Letters, White Thermoplastic Housing, Remote Capability		✓	



## Compac CCAX Combo Unit

UPC CODE	CATALOG NUMBER	DESCRIPTION	SERVICE SMART	SPEC SMART	STOCKED IN
734340753325	CCAXL1RW	Semi-Recessed Lamp Heads, 6V 6W MR16 Lamps, Single Face, Red Letters, White Thermoplastic Housing	✓		C,F
734340754018	CCAXL3GW	Semi-Recessed Lamp Heads, 6V 6W MR16 Lamps, Universal Mount Double Face, Green Letters, White Thermoplastic Housing	✓		F
734340753356	CCAXL3RW	Semi-Recessed Lamp Heads, 6V 6W MR16 Lamps, Universal Mount Double Face, Red Letters, White Thermoplastic Housing	✓		C,N,F



## Compac CCTX Combo Unit

UPC CODE	CATALOG NUMBER	DESCRIPTION	SERVICE SMART	SPEC SMART	STOCKED IN
734340753363	CCTXL1RW	Semi-Recessed Lamp Heads, 6V 5.4W Tungsten Lamps, Single Face, Red Letters, White Thermoplastic Housing		✓	
734340753400	CCTXL3GW	Semi-Recessed Lamp Heads, 6V 5.4W Tungsten Lamps, Universal Mount Double Face, Green Letters, White Thermoplastic Housing		✓	
734340753370	CCTXL3RW	Semi-Recessed Lamp Heads, 6V 5.4W Tungsten Lamps, Universal Mount Double Face, Red Letters, White Thermoplastic Housing	✓		C,F
734340753479	CCTXL3RW	Semi-Recessed Lamp Heads, 6V 5.4W Tungsten Lamps, Universal Mount Double Face, Red Letters, White Thermoplastic Housing, Remote Capability	✓		F

\*C= Carrollton, Texas    F= Fontana, California    N= Norwich, Connecticut

“•” beside a blue catalog number indicates item is a recommended distributor shelf stock item.

Pictures are representative of product categories and may not illustrate the exact products listed on the pages of this guide.

Product information may change without notice. Contact your local Philips sales representative for additional product information.



## VALUE+ IIVCH Combo

UPC CODE	CATALOG NUMBER	DESCRIPTION	SERVICE SMART	SPEC SMART	STOCKED IN
782343837382	VCH253GW	6V 5W MR11 Lamps, Universal Mount, Green Letters, White Thermoplastic Housing, Remote Capability	✓		C,F
782343837399	VCH253RW	6V 5W MR11 Lamps, Universal Mount, Red Letters, White Thermoplastic Housing, Remote Capability	✓		C,F



## VALUE+ IIVCA Combo

UPC CODE	CATALOG NUMBER	DESCRIPTION	SERVICE SMART	SPEC SMART	STOCKED IN
782343753590	VCAL3GW •	6V 6W MR16 Lamps, Universal Mount, Green Letters, White Thermoplastic Housing, Remote Capability	✓		C,N,F
782343753583	VCAL3RW •	6V 6W MR16 Lamps, Universal Mount, Red Letters, White Thermoplastic Housing, Remote Capability	✓		C,N,F



## VALUE+ IIVCT Combo

UPC CODE	CATALOG NUMBER	DESCRIPTION	SERVICE SMART	SPEC SMART	STOCKED IN
782343753613	VCTL3GW •	6V 5.4W Tungsten Lamps, Universal Mount, Green Letters, White Thermoplastic Housing, Remote Capability		✓	
782343753606	VCTL3RW •	6V 5.4W Tungsten Lamps, Universal Mount, Red Letters, White Thermoplastic Housing, Remote Capability	✓		C,N,F

\*C= Carrollton, Texas      F= Fontana, California      N= Norwich, Connecticut

“•” beside a blue catalog number indicates item is a recommended distributor shelf stock item.

Pictures are representative of product categories and may not illustrate the exact products listed on the pages of this guide.

Product information may change without notice. Contact your local Philips sales representative for additional product information.



## VALUE+ VC Combo

UPC CODE	CATALOG NUMBER	DESCRIPTION	SERVICE SMART	SPEC SMART	STOCKED IN
782343262993	VCGW •	Unit, 6V 5.4W Tungsten Lamps, Universal Mount, Green Letters, White Thermoplastic Housing, Remote Capability	✓		C,N,F
781370104160	VCGB	Unit, 6V 5.4W Tungsten Lamps, Universal Mount, Green Letters, Black Thermoplastic Housing, Remote Capability	✓		C,F
781370104153	VCRB	Unit, 6V 5.4W Tungsten Lamps, Universal Mount, Red Letters, Black Thermoplastic Housing, Remote Capability	✓		C,F
782343262986	VCRW •	Unit, 6V 5.4W Tungsten Lamps, Universal Mount, Red Letters, White Thermoplastic Housing, Remote Capability	✓		C,N,F
734340325591	VCGWLRC	Unit, 6V 5.4W Tungsten Lamps, Universal Mount, Green Letters, White Thermoplastic Housing	✓		C,F
781370426446	VCGWSD	Unit, 6V 5.4W Tungsten Lamps, Universal Mount, Green Letters, White Thermoplastic Housing, Remote Capability, Self-Diagnostic Circuitry	✓		C,F
781370908478	VCRWLRC •	Unit, 6V 5.4W Tungsten Lamps, Universal Mount, Red Letters, White Thermoplastic Housing	✓		C,N,F
781370426439	VCRWSD	Unit, 6V 5.4W Tungsten Lamps, Universal Mount, Red Letters, White Thermoplastic Housing, Remote Capability, Self-Diagnostic Circuitry	✓		C,F



## VALUE+ VCL Combo

UPC CODE	CATALOG NUMBER	DESCRIPTION	SERVICE SMART	SPEC SMART	STOCKED IN
782343767269	VCLGW	Unit, LED, Universal Mount, Green Letters, White Thermoplastic Housing, Remote Capability	✓		C,F
782343744314	VCLRW	Unit, LED, Universal Mount, Red Letters, White Thermoplastic Housing, Remote Capability	✓		C,F
782343579756	VL1RHP	Emergency Remote Single Lamp Head, White Thermoplastic Housing, LED, Use w/ VCL Combo	✓		C,F
782343579763	VL2RHP	Emergency Remote Double Lamp Head, White Thermoplastic Housing, LED, Use w/ VCL Combo	✓		C,F

\*C= Carrollton, Texas    F= Fontana, California    N= Norwich, Connecticut

“•” beside a blue catalog number indicates item is a recommended distributor shelf stock item.

Pictures are representative of product categories and may not illustrate the exact products listed on the pages of this guide.

Product information may change without notice. Contact your local Philips sales representative for additional product information.



## VALUE+ VCLA Combo

UPC CODE	CATALOG NUMBER	DESCRIPTION	SERVICE SMART	SPEC SMART	STOCKED IN
782343842430	VCLANGW	Unit, LED, Universal Mount, Green Letters, White Thermoplastic Housing, Remote Capability	✓		C,F
782343842423	VCLANRW	Unit, LED, Universal Mount, Red Letters, White Thermoplastic Housing, Remote Capability	✓		C,F
782343842447	VLA1RHP	Emergency Remote Single Lamp Head, White Thermoplastic Housing, LED, For Use w/ VCLA Combo	✓		C,F
782343842454	VLA2RHP	Emergency Remote Double Lamp Head, White Thermoplastic Housing, LED, For Use w/ VCLA Combo	✓		C,F
782343842461	VLARHP	Emergency Remote Double Lamp Head, White Thermoplastic Housing, LED, For Use w/ VCLA Combo	✓		C,F



## Compac CFX Unit

UPC CODE	CATALOG NUMBER	DESCRIPTION	SERVICE SMART	SPEC SMART	STOCKED IN
781370779757	CFX6	Fixed Lens, White Thermoplastic Housing, Lead Acid Battery, 6V 5W MR11 Lamps	✓		C,F



## Compac CTX Unit

UPC CODE	CATALOG NUMBER	DESCRIPTION	SERVICE SMART	SPEC SMART	STOCKED IN
781370779771	CTX6	White Thermoplastic Housing, Lead Acid Battery, 6V 5.4W Tungsten Lamps	✓		C,F
781370779818	CTX618	White Thermoplastic Housing, Lead Acid Battery, 6V 9W Tungsten Lamps	✓		C,F
781370779795	CTX6H	White Thermoplastic Housing, Lead Acid Battery, 6V 6W Halogen Lamps	✓		C,F
734340611410	CTX6L12WCSWA	White Thermoplastic Housing, Lead Acid Battery, 6V 5.4W Tungsten Lamps	✓		C,F
734340611458	CTX6L18WCSWC	White Thermoplastic Housing, Lead Acid Battery, 6V 9W Tungsten Lamps	✓		C,N,F
734340611540	CTX6L24WCSWF	White Thermoplastic Housing, Lead Acid Battery, 6V 12W Halogen Lamps	✓		F
734340611687	CTXR12L54WCSWJ	White Thermoplastic Housing, Lead Acid Battery, 12V 12W Tungsten Lamps, Remote Capability		✓	
734340611724	CTXR12L54WCSWM	White Thermoplastic Housing, Lead Acid Battery, 12V 12W Halogen Lamps, Remote Capability	✓		F
734340936810	CR1CSWA	Compac Emergency Remote Single Lamp Head, White Thermoplastic Housing, 6V 5.4W Tungsten Lamp, For Use w/ CTX Units	✓		C,F
734340936834	CR1CSWC	Compac Emergency Remote Single Lamp Head, White Thermoplastic Housing, 6V 9W Tungsten Lamp, For Use w/ CTX Units		✓	
734340936841	CR1CSWD	Compac Emergency Remote Single Lamp Head, White Thermoplastic Housing, 6V 6W Halogen Lamp, For Use w/ CTX Units		✓	
734340936865	CR1CSWF	Compac Emergency Remote Single Lamp Head, White Thermoplastic Housing, 6V 12W Halogen Lamp, For Use w/ CTX Units		✓	
734340936926	CR1CSWM	Compac Emergency Remote Single Lamp Head, White Thermoplastic Housing, 12V 12W Halogen Lamp, For Use w/ CTX Units		✓	
734340936940	CR2CSWA	Compac Emergency Remote Double Lamp Head, White Thermoplastic Housing, 6V 5.4W Tungsten Lamps, For Use w/ CTX Units		✓	
734340936964	CR2CSWC	Compac Emergency Remote Double Lamp Head, White Thermoplastic Housing, 6V 9W Tungsten Lamps, For Use w/ CTX Units		✓	
734340936971	CR2CSWD	Compac Emergency Remote Double Lamp Head, White Thermoplastic Housing, 6V 6W Halogen Lamps, For Use w/ CTX Units		✓	
734340936995	CR2CSWF	Compac Emergency Remote Double Lamp Head, White Thermoplastic Housing, 6V 12W Halogen Lamps, For Use w/ CTX Units		✓	
734340937022	CR2CSWJ	Compac Emergency Remote Double Lamp Head, White Thermoplastic Housing, 12V 12W Tungsten Lamps, For Use w/ CTX Units		✓	

\*C= Carrollton, Texas    F= Fontana, California    N= Norwich, Connecticut

"•" beside a blue catalog number indicates item is a recommended distributor shelf stock item.

Pictures are representative of product categories and may not illustrate the exact products listed on the pages of this guide.

Product information may change without notice. Contact your local Philips sales representative for additional product information.



## Compac CAX Unit

UPC CODE	CATALOG NUMBER	DESCRIPTION	SERVICE SMART	SPEC SMART	STOCKED IN
734340753226	CAX6	Semi-Recessed Lamp Heads, White Thermoplastic Housing, Lead Acid Battery, 6V 6W MR16 Lamps	✓		C,F
734340753240	CAX6H	Semi-Recessed Lamp Heads, White Thermoplastic Housing, Lead Acid Battery, 6V 8W MR16 Lamps	✓		C,N,F
781370380120	CAX6L24W12	Semi-Recessed Lamp Heads, White Thermoplastic Housing, Lead Acid Battery, 6V 12W MR16 Lamps	✓		F
781370380168	CAX6L40W20	Semi-Recessed Lamp Heads, White Thermoplastic Housing, Lead Acid Battery, 6V 20W MR16 Lamps	✓		F
781370380212	CAXR12L54W12	Semi-Recessed Lamp Heads, White Thermoplastic Housing, Lead Acid Battery, 12V 12W MR16 Lamps, Remote Capability	✓		F
781370380113	CAXR6L24W6	Semi-Recessed Lamp Heads, White Thermoplastic Housing, Lead Acid Battery, 6V 6W MR16 Lamps, Remote Capability		✓	
782343137499	CAX6LAMP	Replacement Lamp for Emergency Units w/ Semi-Recessed Lamp Heads, 6V 8W MR16 Lamp	✓		F
782343296820	CAR1W6	Compac Emergency Remote Single Lamp Head, White Thermoplastic Housing, 6V 6W MR16 Lamp, For Use w/ CAX Units	✓		C,F



## VALUE+ IIVF Unit

UPC CODE	CATALOG NUMBER	DESCRIPTION	SERVICE SMART	SPEC SMART	STOCKED IN
782343753644	VF6 •	Fixed Lens, White Thermoplastic Housing, Lead Acid Battery, 6V 5W MR11 Lamps	✓		C,N,F



## VALUE+ IIVA Unit

UPC CODE	CATALOG NUMBER	DESCRIPTION	SERVICE SMART	SPEC SMART	STOCKED IN
782343753651	VA6 •	Semi-Recessed Lamp Heads, White Thermoplastic Housing, Lead Acid Battery, 6V 6W MR16 Lamps	✓		C,N,F
782343753743	VA6L24W12	Semi-Recessed Lamp Heads, White Thermoplastic Housing, Lead Acid Battery, 6V 12W MR16 Lamps	✓		C,F
782343753750	VA6L40W20	Semi-Recessed Lamp Heads, White Thermoplastic Housing, Lead Acid Battery, 6V 20W MR16 Lamps	✓		C,F



## VALUE+ II VT Unit

UPC CODE	CATALOG NUMBER	DESCRIPTION	SERVICE SMART	SPEC SMART	STOCKED IN
782343753668	VT6 •	White Thermoplastic Housing, Lead Acid Battery, 6V 5.4W Tungsten Lamps	✓		C,N,F
782343753675	VT618 •	White Thermoplastic Housing, Lead Acid Battery, 6V 9W Tungsten Lamps	✓		C,N,F
782343753682	VT6L24WCSWF •	White Thermoplastic Housing, Lead Acid Battery, 6V 12W Halogen Lamps		✓	
782343753767	VTR12L54WCSWM	White Thermoplastic Housing, Lead Acid Battery, 12V 12W Halogen Lamps	✓		C,F

\*C= Carrollton, Texas    F= Fontana, California    N= Norwich, Connecticut

“•” beside a blue catalog number indicates item is a recommended distributor shelf stock item.

Pictures are representative of product categories and may not illustrate the exact products listed on the pages of this guide.

Product information may change without notice. Contact your local Philips sales representative for additional product information.



## VALUE+ VU6L Unit

UPC CODE	CATALOG NUMBER	DESCRIPTION	SERVICE SMART	SPEC SMART	STOCKED IN
782343573716	VU6L	White Thermoplastic Housing, Lead Acid Battery, 6V 1W LEDs	✓		C,F
782343582619	VU6LSD	White Thermoplastic Housing, Lead Acid Battery, 6V 1W LEDs, Self-Diagnostic Circuitry	✓		C,F



## VALUE+ VU6F Unit

UPC CODE	CATALOG NUMBER	DESCRIPTION	SERVICE SMART	SPEC SMART	STOCKED IN
782343579749	VU6F •	White Thermoplastic Housing, Lead Acid Battery, 6V 5.4W Tungsten Lamps	✓		C,F



## VALUE+ VU6 Unit

UPC CODE	CATALOG NUMBER	DESCRIPTION	SERVICE SMART	SPEC SMART	STOCKED IN
782343558386	VU6-CS •	White Thermoplastic Housing, Lead Acid Battery, 6V 5.4W Tungsten Lamps	✓		C,N,F
782343558393	VU6B-CS	Black Thermoplastic Housing, Lead Acid Battery, 6V 5.4W Tungsten Lamps	✓		C,F
782343582626	VU6SD	White Thermoplastic Housing, Lead Acid Battery, 6V 5.4W Tungsten Lamps, Self-Diagnostic Circuitry	✓		C,F
782343116920	VU6R	White Thermoplastic Housing, Lead Acid Battery, 6V 5.4W Tungsten Lamps, Remote Capability	✓		C,F
782343116982	VRHP	Value+ Emergency Remote Single Lamp Head, White Thermoplastic Housing, 6V 5.4W Tungsten Lamp, For Use w/VU6 Units	✓		C,F



## VALUE+ VU Unit

UPC CODE	CATALOG NUMBER	DESCRIPTION	SERVICE SMART	SPEC SMART	STOCKED IN
782343579770	VU650	White Thermoplastic Housing, Lead Acid Battery, 6V 9W Tungsten Lamps, Remote Capability	✓		C,F



## VALUE+ VU6W Unit

UPC CODE	CATALOG NUMBER	DESCRIPTION	SERVICE SMART	SPEC SMART	STOCKED IN
782343116968	VU6W	White Thermoplastic Housing, Lead Acid Battery, 6V 5.4W Tungsten Lamps, Wet Location	✓		C,F
782343116999	VWRHP	Value+ Emergency Remote Single Lamp Head, White Thermoplastic Housing, 6V 5.4W Tungsten Lamp, Wet Location, For Use w/VU6 Units	✓		C,F
782343117002	VW2RHP	Value+ Emergency Remote Double Lamp Head, White Thermoplastic Housing, 6V 5.4W Tungsten Lamp, Wet Location, For Use w/VU6 Units	✓		C,F

\*C= Carrollton, Texas    F= Fontana, California    N= Norwich, Connecticut

A large dot "•" beside a blue catalog number indicates item is a suggested stock item.

Pictures are representative of product categories and may not illustrate the exact products listed on the pages of this guide.

Product information may change without notice. Contact your local Philips sales representative for additional product information.

# Emergency Architectural



## Emergency Remote Fixtures & Accessories

UPC CODE	CATALOG NUMBER	DESCRIPTION	SERVICE SMART	SPEC SMART	STOCKED IN
734340592573	CCRHP •	Weatherproof Remote Metal Chrome Lamp Head, 6V 6W Halogen Lamp	✓		C,N,F
734340293258	PNA	6V 8W Tungsten Lamp		✓	
782343842539	PCS1	Polycarbonate Vandal Shield	✓		C
782343314982	PVS2	Polycarbonate Vandal Shield	✓		C
782343833162	SMR10WG	Symmetry Remote Dual Lamp, 6V 5.4W Tungsten	✓		C
734340115352	WG4	Wire Guard		✓	
734340085648	WG5	Wire Guard		✓	



## Patron LED Wall Light

UPC CODE	CATALOG NUMBER	DESCRIPTION	SERVICE SMART	SPEC SMART	STOCKED IN
782343573204	PLACBZ	Wall Light, Die Cast Aluminum Bronze Housing, AC 120/277V Only, 6V 8-3W LEDs	✓		C,F
782343573211	PLACW	Wall Light, Die Cast Aluminum White Housing, AC 120/277V Only, 6V 8-3W LEDs	✓		C,F
782343573235	PLACEMBZ	Wall Light, Die Cast Aluminum Bronze Housing, AC 120/277V w/ Integral Nicad Battery Backup, 6V 8-3W LEDs	✓		C,F
782343573242	PLACEMW	Wall Light, Die Cast Aluminum White Housing, AC 120/277V w/ Integral Nicad Battery Backup, 6V 8-3W LEDs	✓		C,F
782343522431	PLEMBZ	Wall Light, Die Cast Aluminum Bronze Housing, Nicad Battery, 6V 8-3W LEDs	✓		C,F
782343573228	PLEMW	Wall Light, Die Cast Aluminum White Housing, Nicad Battery, 6V 8-3W LEDs	✓		C,F



## Patron Wall Light

UPC CODE	CATALOG NUMBER	DESCRIPTION	SERVICE SMART	SPEC SMART	STOCKED IN
781370379902	PDLB	Die Cast Aluminum Black Housing, Lead Acid Battery, 6V 12W, Halogen Lamp	✓		C
781370379841	PDLBZ	Die Cast Aluminum Bronze Housing, Lead Acid Battery, 6V 12W, Halogen Lamp	✓		C,F
781370640217	PDLTT	Die Cast Aluminum Titanium Housing, Lead Acid Battery, 6V 12W, Halogen Lamp	✓		C,F
781370379872	PDLW	Die Cast Aluminum White Housing, Lead Acid Battery, 6V 12W, Halogen Lamp	✓		C,F
781370379919	PDNB	Die Cast Aluminum Black Housing, Nicad Battery, 6V 6W, Halogen Lamp	✓		C,F
781370379858	PDNBZ •	Die Cast Aluminum Bronze Housing, Nicad Battery, 6V 6W, Halogen Lamp	✓		C,N,F
781370603809	PDNTT	Die Cast Aluminum Titanium Housing, Nicad Battery, 6V 6W, Halogen Lamp	✓		C
781370379889	PDNW •	Die Cast Aluminum White Housing, Nicad Battery, 6V 6W, Halogen Lamp	✓		C,N,F
781370379926	PDRB	Die Cast Aluminum Black Housing, Remote Unit, 6V 6W, Halogen Lamp	✓		C,F
781370379865	PDRBZ	Die Cast Aluminum Bronze Housing, Remote Unit, 6V 6W, Halogen Lamp	✓		C,F
781370651633	PDRTT	Die Cast Aluminum Titanium Housing, Remote Unit, 6V 6W, Halogen Lamp	✓		C
781370379896	PDRW	Die Cast Aluminum White Housing, Remote Unit, 6V 6W, Halogen Lamp	✓		C



## MSL Mini Step Lite

UPC CODE	CATALOG NUMBER	DESCRIPTION	SERVICE SMART	SPEC SMART	STOCKED IN
734340107821	MSLA	Amber LED, White Universal Louver Faceplates (Vertical and Horizontal), 120VAC	✓		C
734340107807	MSLL	White LED, White Universal Louver Faceplates (Vertical and Horizontal), 120VAC	✓		C,F

\*C= Carrollton, Texas    F= Fontana, California    N= Norwich, Connecticut

“•” beside a blue catalog number indicates item is a recommended distributor shelf stock item.

Pictures are representative of product categories and may not illustrate the exact products listed on the pages of this guide.

Product information may change without notice. Contact your local Philips sales representative for additional product information.

## Emergency Ballasts



### DEB Series - Emergency Ballast

UPC CODE	CATALOG NUMBER	DESCRIPTION	SERVICE SMART	SPEC SMART	STOCKED IN
734340643596	DEB-1W •	Emergency Ballast, 350-450lm, One Lamp Operation, Fluorescent	✓		C,N,F
734340624021	DEB-5W •	Emergency Ballast, 1100-1400lm, One or Two Lamp Operation, Fluorescent	✓		C,N,F
734340602395	DEB-7LP	Emergency Ballast, 390-700lm, One Lamp Operation, Low Profile, Fluorescent	✓		F
782343823422	DEB-7W •	Emergency Ballast, 600-700lm, One or Two Lamp Operation, Fluorescent	✓		C,N,F



### MTD Series - Transfer Device

UPC CODE	CATALOG NUMBER	DESCRIPTION	SERVICE SMART	SPEC SMART	STOCKED IN
781370584191	MTD	Auxiliary Power Transfer Device (Internal Luminaire Mounted)	✓		C
781370988821	MTD20-277	Auxiliary Power Transfer Device 277V (Wall or Ceiling Mounted)	✓		C

## New York City Products



### New York City Approved

UPC CODE	CATALOG NUMBER	DESCRIPTION	SERVICE SMART	SPEC SMART	STOCKED IN
734340222616	40L3R	NYC Die Cast Aluminum LED Exit, Universal Mount, AC Only, Single/Double Face, Red Letters, Black Housing w/ Satin Aluminum Face	✓		N
782343568231	44RLU1RNYC	NYC Universal Edge Lit LED Exit, Universal Mount, AC Only, Single Face, 8" Red Letters, Clear Background, Satin Aluminum Housing	✓		C,N
782343568248	44RLU2RNYC	NYC Universal Edge Lit LED Exit, Universal Mount, AC Only, Double Face, Red Letters, Mirror Background, Satin Aluminum Housing	✓		C
734340222715	ER40LD3R	NYC Die Cast Aluminum LED Exit, Universal Mount, Emergency Operation Nicad Battery, Single or Double Face, 8" Red Letters, NYC, Black Housing w/ Brushed Aluminum Face	✓		N
782343568255	ER44RLDU1RNYC	NYC Universal Edge Lit LED Exit, Universal Mount, Emergency Operation Nicad Battery, Single Face, 8" Red Letters, Clear Background, Satin Aluminum Housing	✓		C,N,F
782343568262	ER44RLDU2RNYC	NYC Universal Edge Lit LED Exit, Universal Mount, Emergency Operation Nicad Battery, Double Face, 8" Red Letters, Mirror Background, Satin Aluminum Housing	✓		C,N

\*C= Carrollton, Texas    F= Fontana, California    N= Norwich, Connecticut

"•" beside a blue catalog number indicates item is a recommended distributor shelf stock item.

Pictures are representative of product categories and may not illustrate the exact products listed on the pages of this guide.

Product information may change without notice. Contact your local Philips sales representative for additional product information.











© 2013 Koninklijke Philips N.V. All rights reserved.  
Specifications are subject to change without notice.  
[www.philips.com/luminaires](http://www.philips.com/luminaires)

PLt-1338BR 02/14

Philips Lighting  
North America Corporation  
200 Franklin Square Drive  
Somerset, NJ 08873  
Phone: 855-486-2216

Philips Lighting Company  
281 Hillmount Road  
Markham ON, Canada L6C 2S3  
Phone: 800-668-9008