



# Quality light, minimum maintenance

## Philips Fortimo LED Spotlight Module (SLM) Gen 2 System Miniature downlighting and accent lighting systems simplified

The second generation of Fortimo LED Spotlight Module Systems offers a wider range of tools for both accent lighting and downlighting applications. Merchandise of all kinds looks more attractive and desirable under a Fortimo LED Spotlight Module. What's more, the excellent lumen maintenance and rated average life of 50,000 hours<sup>6</sup> make frequent relamping a thing of the past: a promise that is backed up by the Philips five-year limited warranty.<sup>10</sup>

### Future proof system

The new Spotlight modules offers fixed and dimmable lumen output, light distribution, standardized optical, mechanical, electrical and thermal interfaces. The module design is backwards compatible with previous generation modules and drivers.

In expanding the portfolio, the Fortimo LED SLM tight beam now includes 2700K, 3000K and 4000K models as well as adding a minimum 90 CRI at the 3000K for a higher quality of light range products.

### High quality of white light and energy efficiency

The second generation Fortimo LED Spotlight Module, provides high quality white light, and is also very energy efficient.

### Benefits of Fortimo Spotlight Module System:

- Ease of design-in via the use of a new optical dome ensuring clean light distribution
- Improved operating temperature to Tc 75° C enabling more passive cooling solutions
- Color consistency increased to 3 SDCM
- Excellent lumen maintenance of 70% at 50K hours<sup>6</sup>
- Increased efficacies

### Applications

- Retail:  
Accent display, track lighting, mini floodlighting
- Hospitality:  
Lobbies, reception areas, restaurants
- Recreation:  
Museums, galleries and theaters

### Update for SLM tight Beam

- Additional color temperatures added:  
2700K, 3000K and 4000K
- Minimum CRI 90 version added for 3000K

# PHILIPS

## Module Performance Specifications\*

## Fortimo LED SLM Gen 2

Module Description	Approx. Lumens <sup>1, 2</sup>	CRI (min) <sup>3</sup>	CCT <sup>4</sup> (K)	SDCM <sup>5</sup>	Module Rated Power (W)	Module Efficacy (lm/W)	Rated Average Lifetime (hrs) Tc 75° C <sup>6</sup>
Fortimo LED SLM 800 10W/827 L13 G2	800	80	2700	3	9.8	82	50,000
Fortimo LED SLM 800 10W/830 L13 G2	800	80	3000	3	9.2	87	50,000
Fortimo LED SLM 800 9W/835 L13 G2	800	80	3500	3	8.4	95	50,000
Fortimo LED SLM 800 8W/840 L13 G2	800	80	4000	3	7.7	104	50,000
Fortimo LED SLM 800 13W/927 L13 G2	800	90	2700	3	12.8	62	50,000
Fortimo LED SLM 800 12W/930 L13 G2	800	90	3000	3	11.5	69	50,000
Fortimo LED SLM 1100 15W/827 L13 G2	1100	80	2700	3	14.4	76	50,000
Fortimo LED SLM 1100 14W/830 L13 G2	1100	80	3000	3	13.4	82	50,000
Fortimo LED SLM 1100 13W/835 L13 G2	1100	80	3500	3	12.7	87	50,000
Fortimo LED SLM 1100 12W/840 L13 G2	1100	80	4000	3	11.4	96	50,000
Fortimo LED SLM 1100 20W/927 L13 G2	1100	90	2700	3	19.6	56	50,000
Fortimo LED SLM 1100 18W/930 L13 G2	1100	90	3000	3	17.8	62	50,000
Fortimo LED SLM 2000 26W/827 L19 G2	2000	80	2700	3	25.5	78	50,000
Fortimo LED SLM 2000 24W/830 L19 G2	2000	80	3000	3	23.5	85	50,000
Fortimo LED SLM 2000 23W/835 L19 G2	2000	80	3500	3	22.5	89	50,000
Fortimo LED SLM 2000 20W/840 L19 G2	2000	80	4000	3	20	100	50,000
Fortimo LED SLM 2000 35W/927 L19 G2	2000	90	2700	3	34.5	58	50,000
Fortimo LED SLM 2000 32W/930 L19 G2	2000	90	3000	3	31.5	63	50,000
Fortimo LED SLM 3000 42W/827 L19 G2	3000	80	2700	3	42	71	50,000
Fortimo LED SLM 3000 39W/830 L19 G2	3000	80	3000	3	39	77	50,000
Fortimo LED SLM 3000 40W/835 L19 G2	3000	80	3500	3	40	75	50,000
Fortimo LED SLM 3000 36W/840 L19 G2	3000	80	4000	3	36	83	50,000

\* Current specifications are subject to change, for the latest specifications, please contact your local Philips sales representative.

L13 and L19 refers to light emitting diameter in mm

## Module Performance Specifications\*

## Fortimo LED SLM Tight Beam

Module Description	Approx. Lumens <sup>1, 2</sup>	CRI (min) <sup>3</sup>	CCT <sup>4</sup> (K)	SDCM <sup>5</sup>	Module Rated Power (W)	Module Efficacy (lm/W)	Rated Average Lifetime (hrs) Tc 75° C <sup>6</sup>
Fortimo LED SLM 1100 17W/827 L9 G2	1100	80	2700	3	16.7	66	50,000
Fortimo LED SLM 1100 17W/830 L9 G2	1100	80	3000	3	14.9	74	50,000
Fortimo LED SLM 1100 15W/840 L9 G2	1100	80	4000	3	13.1	84	50,000
Fortimo LED SLM 1100 19W/930 L9 G2	1000	90	3000	3	17.8	59	50,000

\*Current specifications are subject to change, for the latest specifications, please contact your local Philips sales representative.

1. Photometric testing consistent with CIE 127:2007 2nd Edition

2. Production units fall between +\_6.5% of listed values

3. All CRI are 80 or above and 90 or above as specified in that data chart above

4. Complies with ANSI C78.377A Specifications

5. Production units will fall between +/- 0.2 of listed value

6. Average rated life is based on engineering data testing and probability analysis. The hours are at the B50, L70 point - 50,000 hours life with 70% lumen maintenance at Tc point of 75° C

7. Restrictions on Hazardous Substances (RoHS) is a European directive (2002/95/EC) designed to limit the content of 6 substances [lead, mercury, cadmium, hexavalent chromium, polybrominated biphenyls (PBB), and polybrominated diphenyl ethers (PBDE)] in electrical and electronic products. For products used in North America compliance to RoHS is voluntary and self-certified

8. Indicates that the LEDs are components recognized with UL and complies with UL8750 Standard for LEDs

9. Philips Fortimo Spotlight Module is a Zhaga certified light engine. For more information visit [www.zhagastandard.org](http://www.zhagastandard.org)

10. See [www.philips.com/ledmodulesna](http://www.philips.com/ledmodulesna) and click on the appropriate product for complete warranty details



## System Part Numbers and Performance Specifications\*

For 120-277 Vac Systems

System Description	Module Part Number	Dimming 0-10V & TE					
		39W Driver Dimming (0-10V only)		25W Driver Linear Dimming (120 Vac only)		50W Driver Linear TE Dimming (120 Vac only)	
		System Power (W)	System Efficacy (lm/W)	System Power (W)	System Efficacy (lm/W)	System Power (W)	System Efficacy (lm/W)
Fortimo LED SLM 800 10W/827 L13 G2	9290 006 97903	13	77	13	62		
Fortimo LED SLM 800 10W/830 L13 G2	9290 006 98003	12	76	12	66		
Fortimo LED SLM 800 9W/835 L13 G2	9290 006 98103	11	76	11	71		
Fortimo LED SLM 800 8W/840 L13 G2	9290 006 98203	10	74	10	77		
Fortimo LED SLM 800 13W/927 L13 G2	9290 006 98303	16	78	16	49		
Fortimo LED SLM 800 12W/930 L13 G2	9290 006 98403	15	78	15	54		
Fortimo LED SLM 1100 15W/827 L13 G2	9290 006 74703	18	79	18	60		
Fortimo LED SLM 1100 14W/830 L13 G2	9290 006 74903	17	79	17	65		
Fortimo LED SLM 1100 13W/835 L13 G2	9290 006 75103	16	78	16	68		
Fortimo LED SLM 1100 12W/840 L13 G2	9290 006 75203	15	78	15	74		
Fortimo LED SLM 1100 20W/927 L13 G2	9290 006 74803			24	45		
Fortimo LED SLM 1100 18W/930 L13 G2	9290 006 75003			22	50		
Fortimo LED SLM 2000 26W/827 L19 G2	9290 006 75403	30	67			30	66
Fortimo LED SLM 2000 24W/830 L19 G2	9290 006 75803	28	72			28	71
Fortimo LED SLM 2000 23W/835 L19 G2	9290 006 76203	26	76			27	74
Fortimo LED SLM 2000 20W/840 L19 G2	9290 006 76403	24	83			24	82
Fortimo LED SLM 2000 35W/927 L19 G2	9290 006 75603					40	49
Fortimo LED SLM 2000 32W/930L19 G2	9290 006 76003	37	55			37	54
Fortimo LED SLM 3000 42W/827 L19 G2	9290 006 76503					49	62
Fortimo LED SLM 3000 39W/830 L19 G2	9290 006 76903					45	66
Fortimo LED SLM 3000 40W/835 L19 G2	9290 006 77303					46	65
Fortimo LED SLM 3000 36W/840 L19 G2	9290 006 77503					42	71
Fortimo LED SLM 1100 17W/827 L9 G2	9290 008 32003	21	52	21	53		
Fortimo LED SLM 1100 17W/830 L9 G2	9290 006 59403	19	58	19	59		
Fortimo LED SLM 1100 15W/840 L9 G2	9290 008 32103	17	65	17	66		
Fortimo LED SLM 1100 19W/930 L9 G2	9290 008 19503	22	47	22	47		
<b>Driver Part Number</b>		<b>913701213402</b>		<b>X1025C100V036XPLIM</b>		<b>X1050C100V054XPLIM</b>	

\* Current specifications are subject to change, for the latest specifications, please contact your local Philips Sales representative.

## System Part Numbers and Performance Specifications\*

For 120 Vac Systems

System Description	Module Part Number	Dimming 0-10V & TE				Dimming Dali	
		25W Driver		50W Driver		25W Driver	
		System Power (W)	System Efficacy (lm/W)	System Power (W)	System Efficacy (lm/W)	System Power (W)	System Efficacy (lm/W)
Fortimo LED SLM 800 10W/827 L13 G2	9290 006 97903	13	62			18	62
Fortimo LED SLM 800 10W/830 L13 G2	9290 006 98003	12	66			17	66
Fortimo LED SLM 800 9W/835 L13 G2	9290 006 98103	11	71			16	71
Fortimo LED SLM 800 8W/840 L13 G2	9290 006 98203	10	77			15	77
Fortimo LED SLM 800 13W/927 L13 G2	9290 006 98303	16	49			24	49
Fortimo LED SLM 800 12W/930 L13 G2	9290 006 98403	15	54			22	54
Fortimo LED SLM 1100 15W/827 L13 G2	9290 006 74703	18	60			18	60
Fortimo LED SLM 1100 14W/830 L13 G2	9290 006 74903	17	65			17	65
Fortimo LED SLM 1100 13W/835 L13 G2	9290 006 75103	16	68			16	68
Fortimo LED SLM 1100 12W/840 L13 G2	9290 006 75203	15	74			15	74
Fortimo LED SLM 1100 20W/927 L13 G2	9290 006 74803	24	45			24	45
Fortimo LED SLM 1100 18W/930 L13 G2	9290 006 75003	22	50			22	50
Fortimo LED SLM 2000 26W/827 L19 G2	9290 006 75403			30	66		
Fortimo LED SLM 2000 24W/830 L19 G2	9290 006 75803			28	71		
Fortimo LED SLM 2000 23W/835 L19 G2	9290 006 76203			27	74		
Fortimo LED SLM 2000 20W/840 L19 G2	9290 006 76403			24	82		
Fortimo LED SLM 2000 35W/927 L19 G2	9290 006 75603			40	49		
Fortimo LED SLM 2000 32W/930L19 G2	9290 006 76003			37	54		
Fortimo LED SLM 3000 42W/827 L19 G2	9290 006 76503			49	62		
Fortimo LED SLM 3000 39W/830 L19 G2	9290 006 76903			45	66		
Fortimo LED SLM 3000 40W/835 L19 G2	9290 006 77303			46	65		
Fortimo LED SLM 3000 36W/840 L19 G2	9290 006 77503			42	71		
Fortimo LED SLM 1100 17W/827 L9 G2	9290 008 32003	21	53			21	53
Fortimo LED SLM 1100 17W/830 L9 G2	9290 006 59403	19	59			19	59
Fortimo LED SLM 1100 15W/840 L9 G2	9290 008 32103	17	66			17	66
Fortimo LED SLM 1100 19W/930 L9 G2	9290 008 19503	22	47			22	47
<b>Driver Part Number</b>		<b>XR025C100V036XPM1M</b>		<b>XR050C100V054XPM1M</b>		<b>XR025C100V036LPM1M</b>	

\* Current specifications are subject to change, for the latest specifications, please contact your local Philips Sales representative.

## System Part Numbers and Performance Specifications\*

For 277 Vac Systems

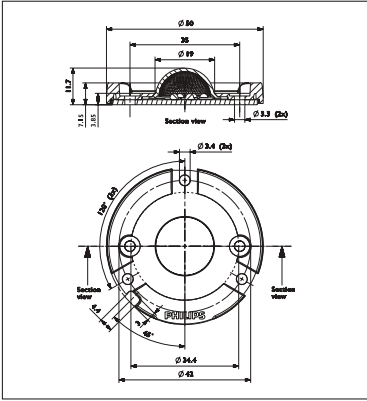
System Description	Module Part Number	Dimming 0-10V			
		25W Driver		50W Driver	
		System Power (W)	System Efficacy (lm/W)	System Power (W)	System Efficacy (lm/W)
Fortimo LED SLM 800 10W/827 L13 G2	9290 006 97903	13	60		
Fortimo LED SLM 800 10W/830 L13 G2	9290 006 98003	13	63		
Fortimo LED SLM 800 9W/835 L13 G2	9290 006 98103	12	67		
Fortimo LED SLM 800 8W/840 L13 G2	9290 006 98203	11	72		
Fortimo LED SLM 800 13W/927 L13 G2	9290 006 98303	17	48		
Fortimo LED SLM 800 12W/930 L13 G2	9290 006 98403	15	52		
Fortimo LED SLM 1100 15W/827 L13 G2	9290 006 74703	18	60		
Fortimo LED SLM 1100 14W/830 L13 G2	9290 006 74903	17	64		
Fortimo LED SLM 1100 13W/835 L13 G2	9290 006 75103	17	67		
Fortimo LED SLM 1100 12W/840 L13 G2	9290 006 75203	15	72		
Fortimo LED SLM 1100 20W/927 L13 G2	9290 006 74803	24	46		
Fortimo LED SLM 1100 18W/930 L13 G2	9290 006 75003	22	50		
Fortimo LED SLM 2000 26W/827 L19 G2	9290 006 75403			30	67
Fortimo LED SLM 2000 24W/830 L19 G2	9290 006 75803			28	72
Fortimo LED SLM 2000 23W/835 L19 G2	9290 006 76203			27	75
Fortimo LED SLM 2000 20W/840 L19 G2	9290 006 76403			24	83
Fortimo LED SLM 2000 35W/927 L19 G2	9290 006 75603			40	50
Fortimo LED SLM 2000 32W/930L19 G2	9290 006 76003			36	56
Fortimo LED SLM 3000 42W/827 L19 G2	9290 006 76503			48	63
Fortimo LED SLM 3000 39W/830 L19 G2	9290 006 76903			44	68
Fortimo LED SLM 3000 40W/835 L19 G2	9290 006 77303			45	66
Fortimo LED SLM 3000 36W/840 L19 G2	9290 006 77503			41	73
Fortimo LED SLM 1100 17W/827 L9 G2	9290 008 32003	21	53		
Fortimo LED SLM 1100 17W/830 L9 G2	9290 006 59403	19	58		
Fortimo LED SLM 1100 15W/840 L9 G2	9290 008 32103	17	65		
Fortimo LED SLM 1100 19W/930 L9 G2	9290 008 19503	22	48		
<b>Driver Part Number</b>		<b>XV025C100V036DPM1M</b>		<b>XV050C100V054DPM1M</b>	

\* Current specifications are subject to change, for the latest specifications, please contact your local Philips Sales representative.

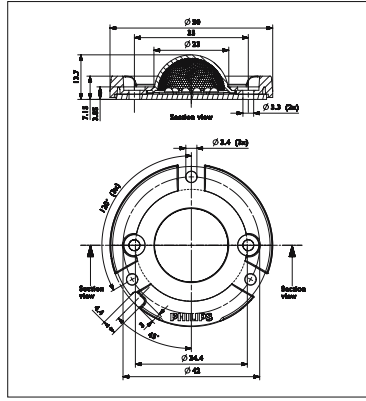
## Cable Assembly Part Numbers

Cable Assembly	For use with 39W driver	For use with 25W & 50W drivers
	442240 073981 (7 wire, fan, 50cm)	9290 006 84103 (9 wire, fan, 84cm)
		9290 006 84203 (6 wire, 50cm no fan)
		9290 006 84303 (6 wire, 84cm no fan)
		9290 006 68003 (9 wire, fan, 50cm)
		9290 006 92003 (9 wire, fan, 50cm with fan connector)

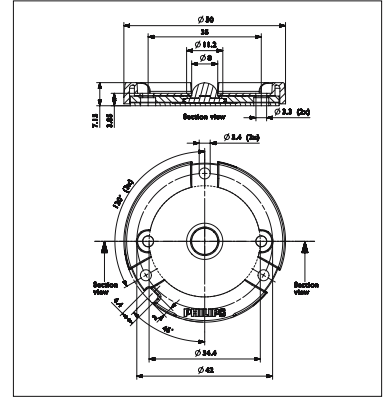
## Dimensions (mm)



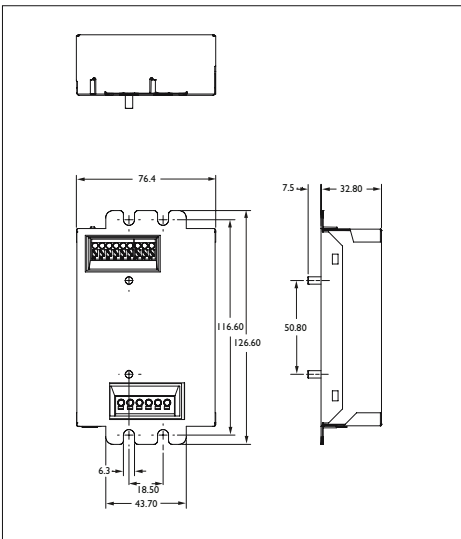
Fortimo LED Spotlight Module Gen 2 800 and 1100lm versions



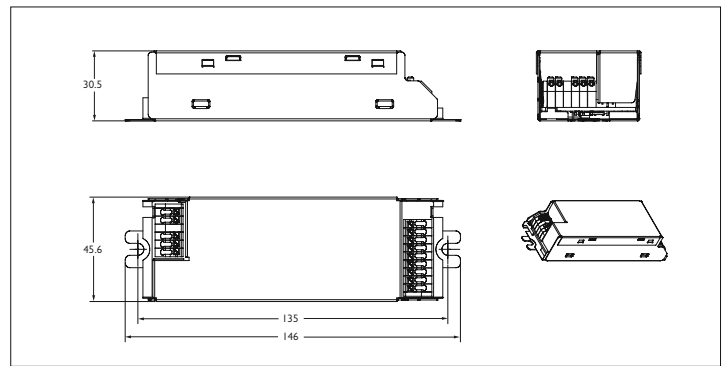
Fortimo LED Spotlight Module Gen 2 2000 and 3000lm version



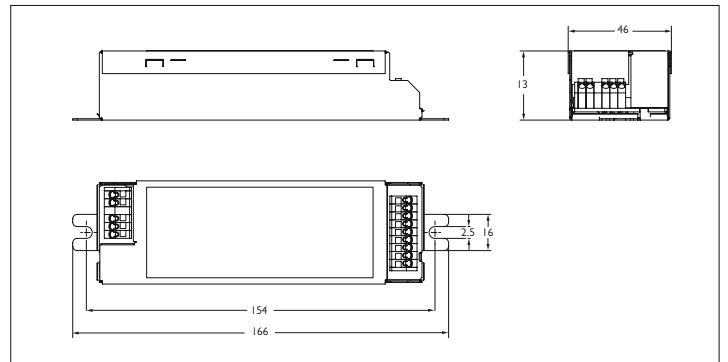
Fortimo LED Spotlight Module Tight Beam



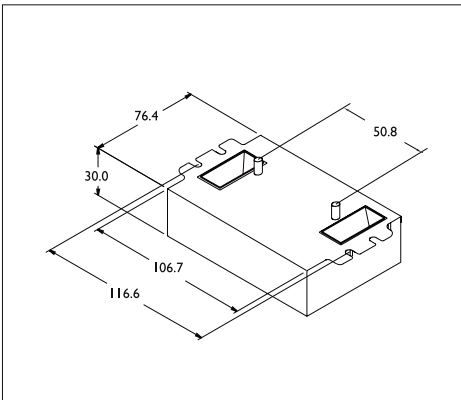
25W and 50W Driver



25W Linear Driver



50W Linear Driver



39W Driver



©2012 Philips Lighting Electronics, N.A.,  
A Division of Philips Electronics North America Corporation

All rights reserved.  
Printed in the USA

Form No. LE-6280-D

Philips Lighting Electronics N.A.  
10275 W. Higgins Road  
Rosemont IL 60018  
Tel: 800-322-2086 Fax: 888-423-1882  
Customer Support/Customer Care: 800-372-3331  
OEM Support: 866-915-5886  
[www.philips.com/ledmodulesna](http://www.philips.com/ledmodulesna)