



© 2018 Philips Lighting Holding B.V. All rights reserved. Philips reserves the right to make changes in specifications and/or to discontinue any product at any time without notice or obligation and will not be liable for any consequences resulting from the use of this publication.

PDb-1803BN 01/18 www.philips.com/luminaires

Philips Lighting
North America Corporation
200 Franklin Square Drive
Somerset, NJ 08873
Tel. 855-486-2216

Philips Lighting Canada Ltd.
281 Hillmount Rd.
Markham, ON,
Canada L6C 2S3
Tel. 800-668-9008

PHILIPS
Day-Brite
CFI

Industrial

Vaporlume &
FluxStream sealed



Cover your wet
location needs with
ease and confidence

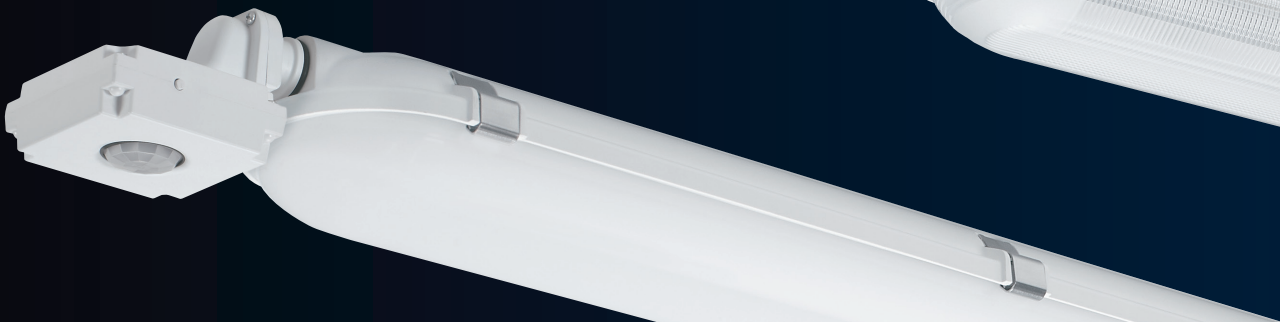
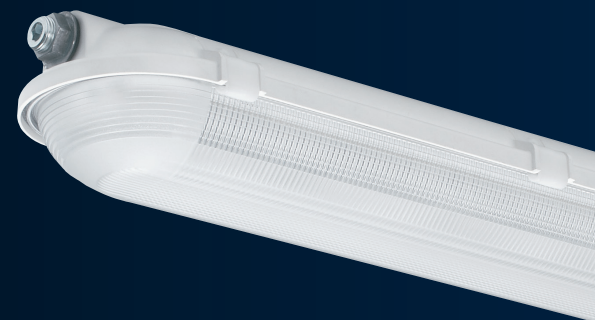
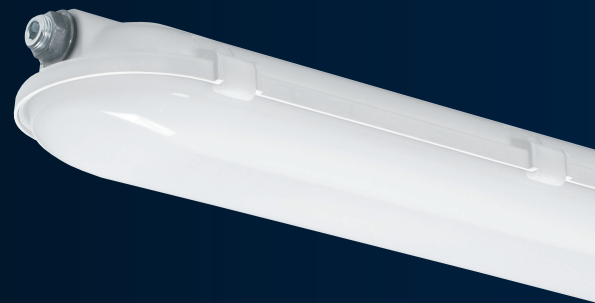
Philips Day-Brite / Philips CFI Vaporlume sealed industrial and
FluxStream sealed strip ensure just the right solution for your application.

Philips Day-Brite offers a dual approach to wet location lighting with two robust and reliable families. For the highest output and most demanding applications, consider Philips Day-Brite Vaporlume LED sealed industrial. If cost and ease of ordering are at the forefront of your job, Philips Day-Brite FluxStream LED sealed strip might be the better choice. Either way, you get peace of mind and a great product. Each of these luminaires was designed around LEDs, resulting in high lumen output from small form factors. They also offer multiple lumen packages and distributions, assuring just the right output for your application requirements.



Vaporlume LED sealed industrial

- Up to 10,000 lumens
- 2' and 4' lengths
- CCT 3000-5000K
- IP65 rating standard, IP67 optional
- NSF rated
- Frosted lens (LFA) available for reduced glare
- WHP optics with prismatic acrylic lens to meet DLC garage requirements
- Plastic cam latches standard, stainless steel optional
- Tamper resistant hardware optional
- Optional motion sensor for energy savings
- Continues Vaporlume LED legacy and offers higher output per foot at a lower price





FluxStream LED sealed strip

- Up to 12,000 lumens
- 4' and 8' lengths
- CCT 3000-5000K
- Wet location listing standard
- General wide distribution
- Optional motion sensor for energy savings
- Continues FluxStream family legacy of affordability and ease of ordering

