



PHILIPS

Interact Ready lighting

Connected lighting made easy with Interact Ready

Philips connected lighting that works with the
Interact Pro app and portal

interact
ready.

Turn on a game-changer

Connected lighting helps installers to reduce cost to serve their customers and provide better service, and enables business owners to reduce the cost of operations while providing personalized lighting to their employees.

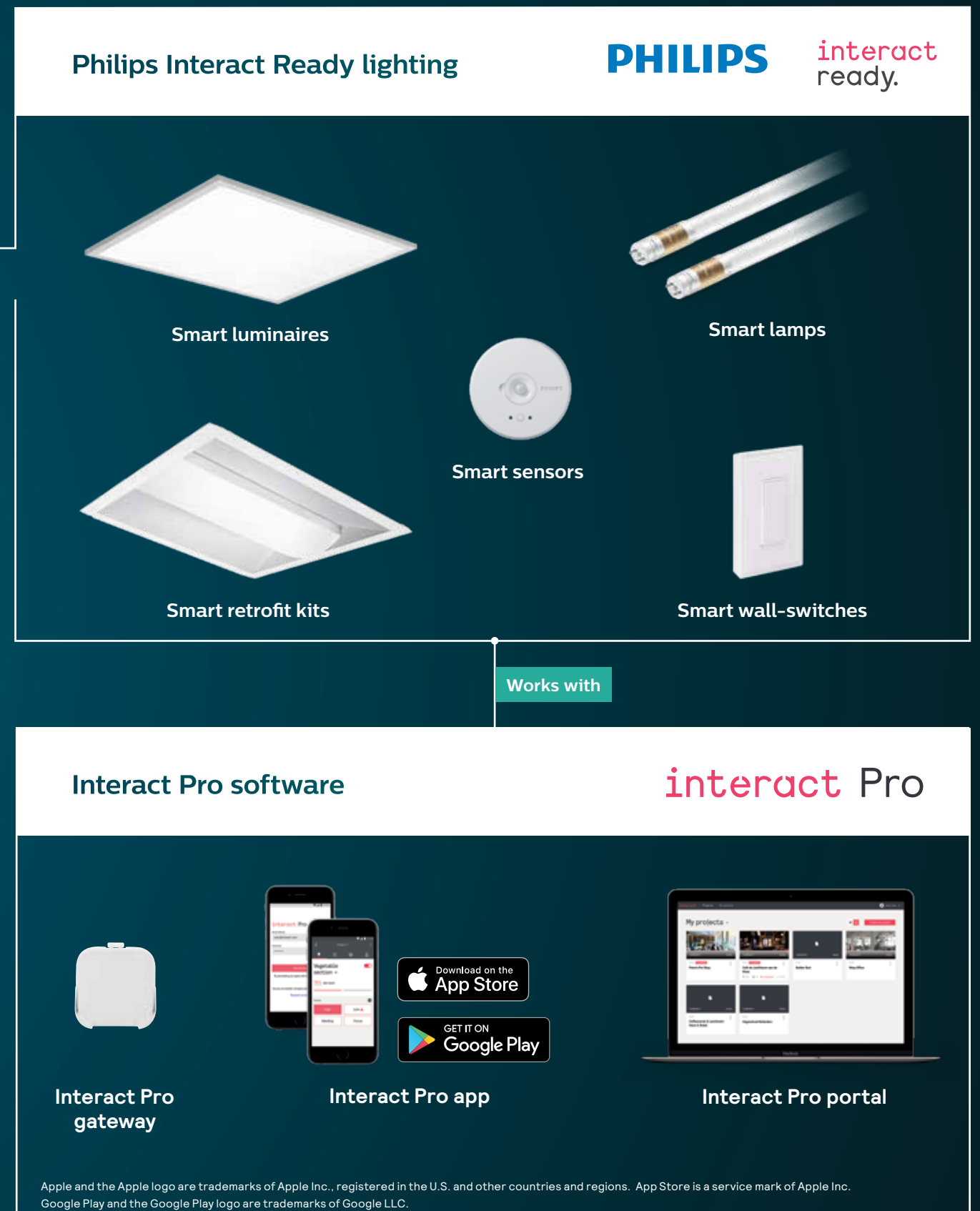
Philips Interact Ready lighting is a broad portfolio of wirelessly connected lighting products that includes luminaires, retrofit kits, lamps, sensors and wall switches that work seamlessly with **Interact Pro's app and portal** and offer the best choice for renovation or new construction projects.

Philips Interact Ready lighting products are easy to install, they don't need any control cables, making it easy to set up without the need for any technical expertise.

Our light source solutions comply with most challenging codes and network lighting control requirements and qualify for maximum rebate potential.

To find rebates in your area visit philips.com/interact-ready for the latest updated list.

How the connected lighting system comes together



Wherever you work, **it works.**

This energy-saving connected lighting system is especially suitable for small- to medium-sized businesses, such as offices, schools, warehouses and retail locations. Each gateway controls 200 light points, 15 sensors and 15 switches. Multiple gateways can be used at a customer site for multiple floors, areas, and adjoining structures.



Office and School



Warehouse



Retail

Interact Pro adds a new level of connected lighting success to your business with the broadest portfolio of luminaires, retrofit kits and lamps. Introduce customers to the power of IoT possibilities and simplify your work at the same time.

Take on more projects, complete them faster and create partnerships that last.



Philips Day-Brite FluxPanel LED recessed

2'X2', 2'X4', 1'X4' recessed, suspended and surface mount flat panel smooth gradient of light.



Philips Day-Brite FluxGrid LED recessed

2'X2', 2'X4', 1'X4' recessed troffer offers architectural appeal with two different lens styles, discrete air handling and access to the boards and driver from below.



Philips Day-Brite EvoGrid LED recessed

2'X2', 2'X4', 1'X4' architectural grade recessed troffer with large luminous area that minimizes apparent brightness compared to other based luminaires.



Philips Lightolier Calculite LED downlights

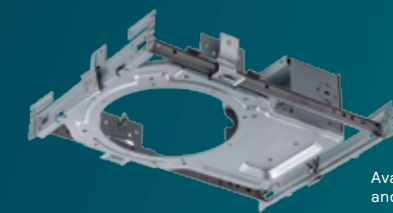
LED downlight features industry leading visual comfort (50° cut-off), excellent uniform illumination over time, and patented installation flexibility.



Calculite trim shown

Philips Lightolier LyteProfile LED downlights*

LED downlight that provide best balance of performance and price while still featuring Lightolier's easy installation and future proof architecture.



Available in 4", 6" and 7" sizes

Philips Lightolier EasyLyte* LED downlights

LED downlight that is the best choice for economy without sacrificing ease of installation or performance

Philips EvoKit LED retrofit kits

2'X2' and the 2'X4' LED Retrofit Kits compatible with both standard and narrow T-grid are an energy efficient, easy to install solution to upgrade fluorescent troffers to LED.



Philips Ledalite FloatPlane LED suspended and wall

Interact ready 4 feet and 8 feet suspended architectural luminaire with sleek and sporty profile options, sky-high performance and ground level pricing make it easier than ever to integrate coast-to-coast style into your lighting design.



Philips Day-Brite FluxStream LED linear

A family of LED linear luminaires deliver high-quality, more uniform light versus fluorescents for a greater range of applications.



Philips MasterConnect TLED

2', 4' and U bent InstantFit T8 LED tubes are easy upgrade into Interact connected lighting systems. Remove the old fluorescent tubes, twist in these smart TLEDs and you're connected.



Philips MasterConnect TLED with Integrated Motion Sensing*

4' InstantFit T8 LED tubes offer the same features found in MasterConnect smart TLEDs, with the addition of integrated motion sensing. These tubes create a distributed sensing network – motion sensing in every fixture.



Philips sensors

Wireless Occ sensor (OCC SENSOR IA CM IP42 WH 10/1) or wireless Day/Occ sensor (OCC MULTI SENSOR IA CM WH 10/1).



Philips switch

Philips UID8451/10 ZigBee Green Power wireless switch and dim 2-button selector



Additional sensor Ready indoor products are available on Interact Pro. Contact a Signify representative.

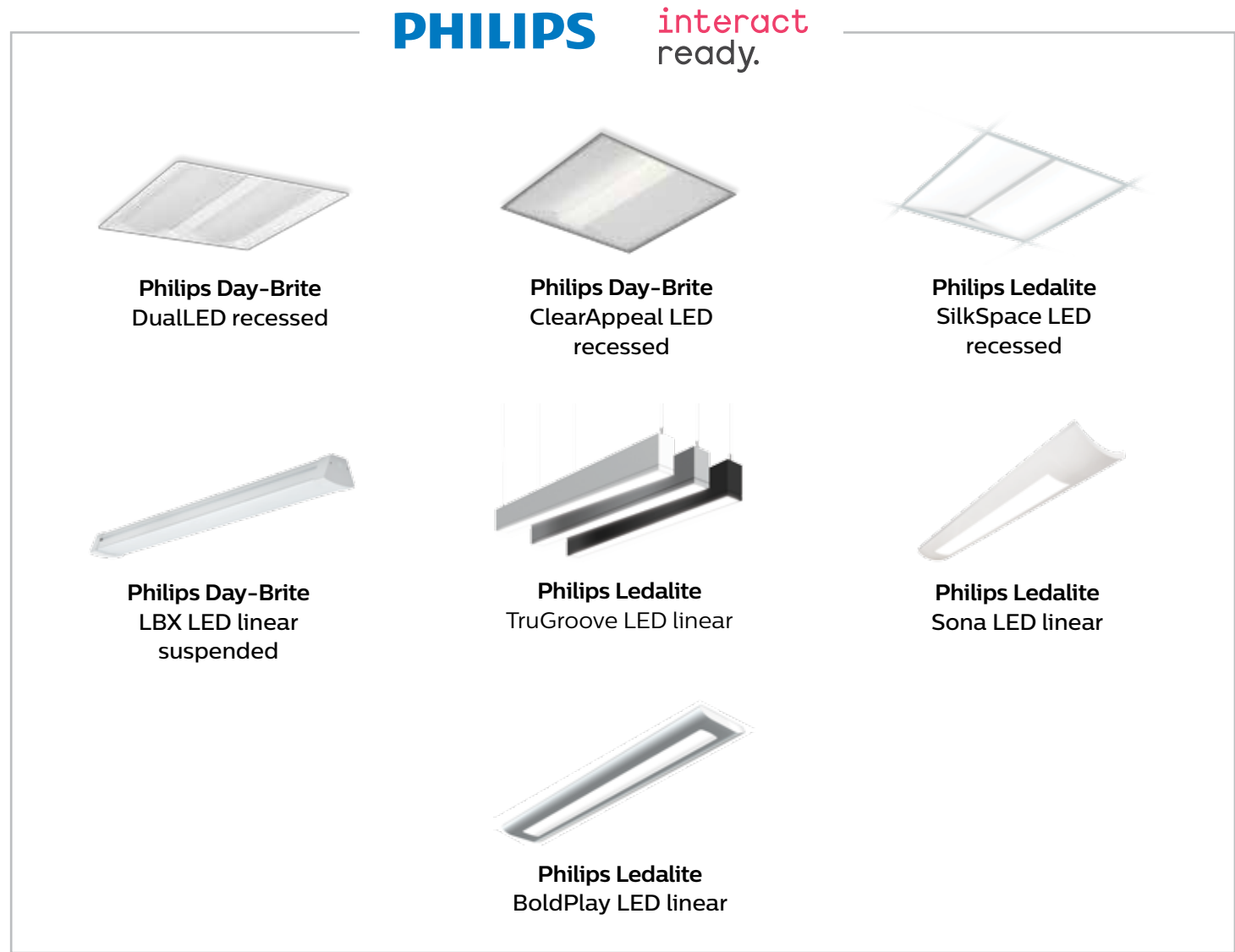
*Available at a future date

Built for **success**

Philips offerings an extended portfolio of indoor luminaires available through our specials process. Our commitment is to have our product portfolio connected or connectable by 2020.

Contact a Signify representative for additional offerings and availability.

PHILIPS interact ready.



- Philips Day-Brite DualLED recessed
- Philips Day-Brite ClearAppeal LED recessed
- Philips Ledalite SilkSpace LED recessed
- Philips Day-Brite LBX LED linear suspended
- Philips Ledalite TruGroove LED linear
- Philips Ledalite Sona LED linear
- Philips Ledalite BoldPlay LED linear



Stand out and grow your business

Contact your local Philips sales representative or Agency for sales tools, training sessions and a live demonstration to transition your business into the differentiated, value-added world of connected lighting systems.

Visit philips.com/interact-ready and register for more information.

© 2018 Signify Holding. All rights reserved. Signify reserves the right to make changes in specifications and/or to discontinue any product at any time without notice or obligation and will not be liable for any consequences resulting from the use of this publication..

PLt-18120BR 10/18 philips.com/interact-ready

Philips Lighting
North America Corporation
200 Franklin Square Drive
Somerset, NJ 08873
Tel. 855-486-2216

Philips Lighting Canada Ltd.
281 Hillmount Rd.
Markham, ON,
Canada L6C 2S3
Tel. 800-668-9008