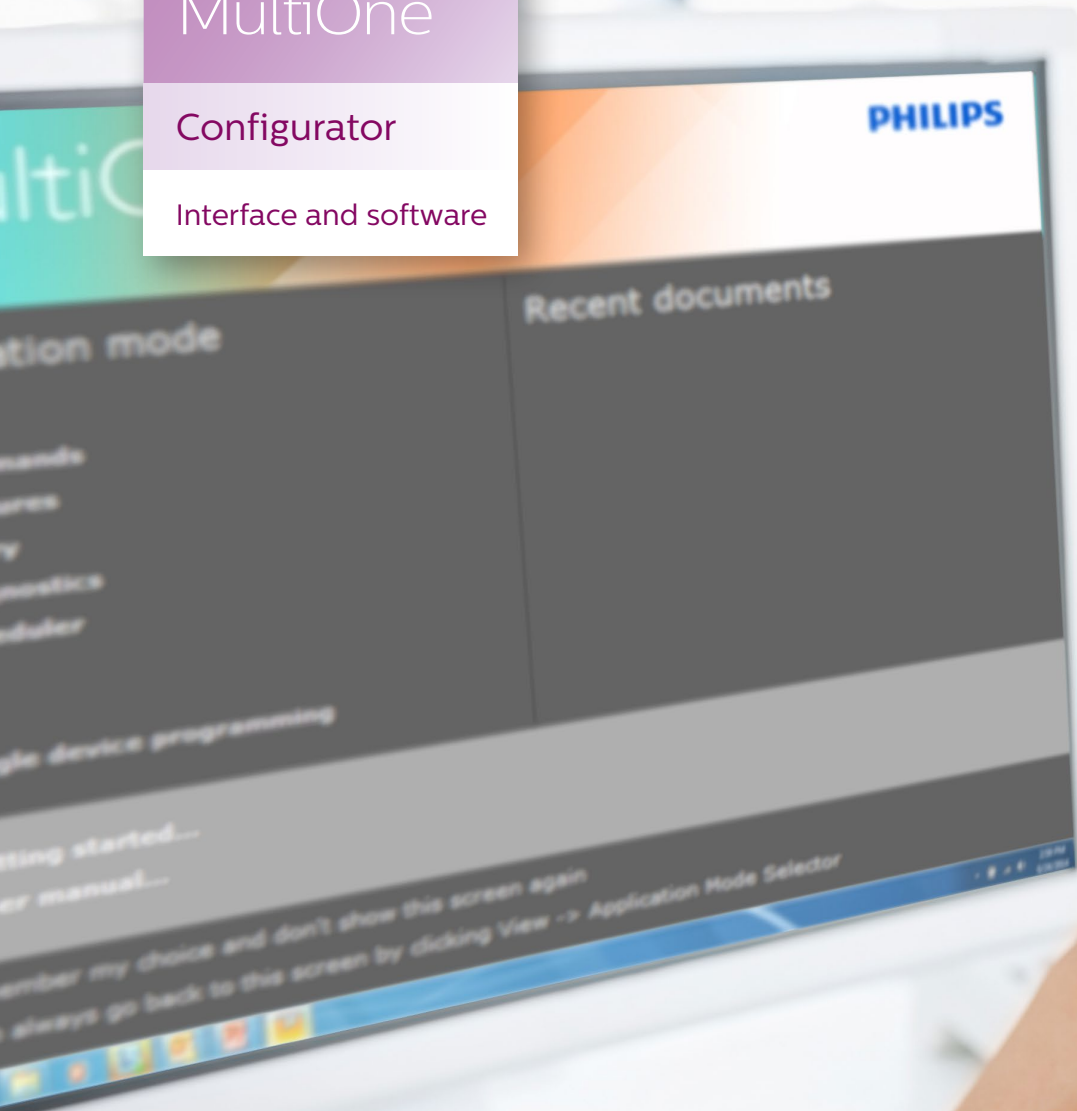


PHILIPS

MultiOne

Configurator

Interface and software



Configure your lighting solution

Intuitive tool enables flexibility by configuring your drivers to your application needs

Benefits

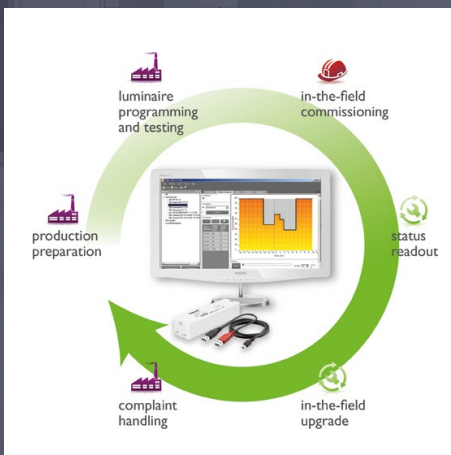
- One tool for all Philips configurable drivers, both for conventional and LED systems.
- Flexibility for OEM providing access to the features built into the driver.
- Optimized for use in the production process.
- Unique tool that combines configuration with diagnostics.

Features

- For use with all Philips LED, fluorescent and HID programmable drivers.
- Suitable for standard Windows computers with USB connection.
- Different interfaces depending on the installation.
- Enables optimization of installation, last minute changes, easy diagnostics and maintenance.

Applications

- Retail.
- Office.
- Industry.
- Outdoor.



Intuitive tool enables flexibility by configuring your drivers to your application needs

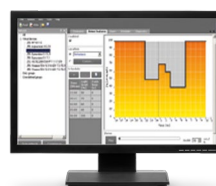


The MultiOne Configurator is a tool that enables flexibility and differentiation. The proposition consists of 2 key building blocks:



The MultiOne interface

Which takes care of the communication between the driver or controls and the connected PC.



The MultiOne software

Optimized to develop and program the ideal setting of the lighting application, also to analyze the information in your device.



Configurability

“

It has become a must-have in all applications where the lighting system needs to match specific requirements.”

The customer demands for flexibility and diversity are increasing fast. That is why Philips has introduced tools which allow you to easily configure your drivers.

The universal Philips MultiOne Configurator is a tool that you can use with any Philips programmable driver and configure the functions in your lighting solutions for any application. It has become a must-have in all applications where the lighting system needs to match specific requirements.

Easy to use

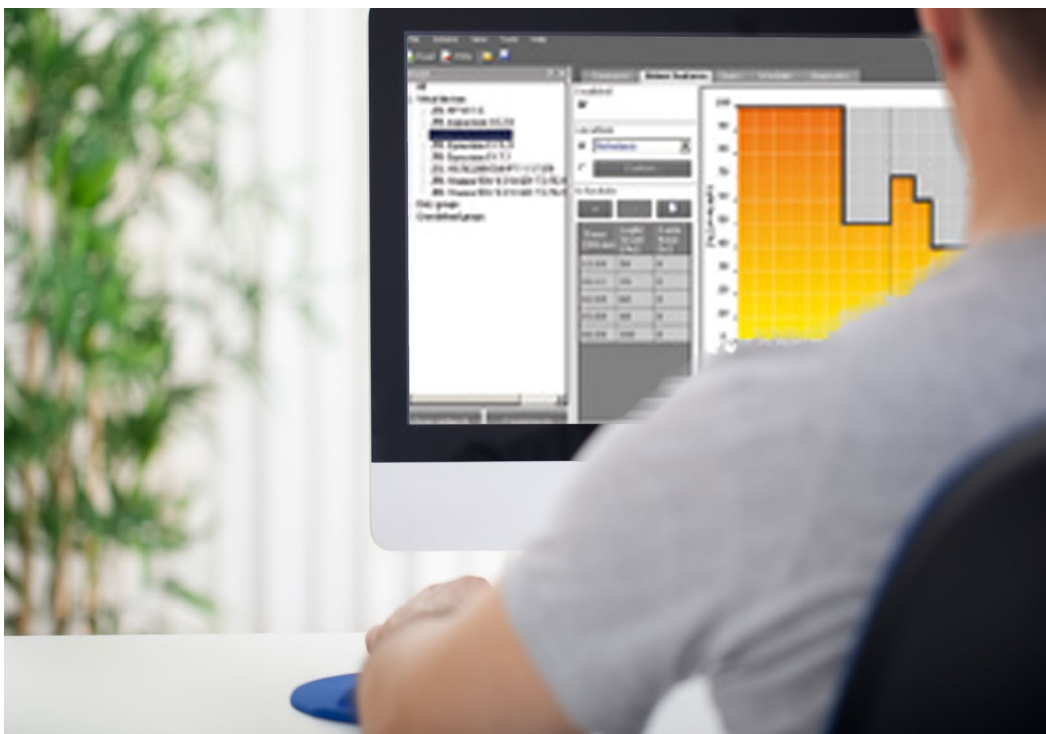
Using a standard computer with a USB connection and the MultiOne Interface tool (cable included) creates your MultiOne configuration station. On the website www.philips.com/MultiOne you can find the free downloadable software.

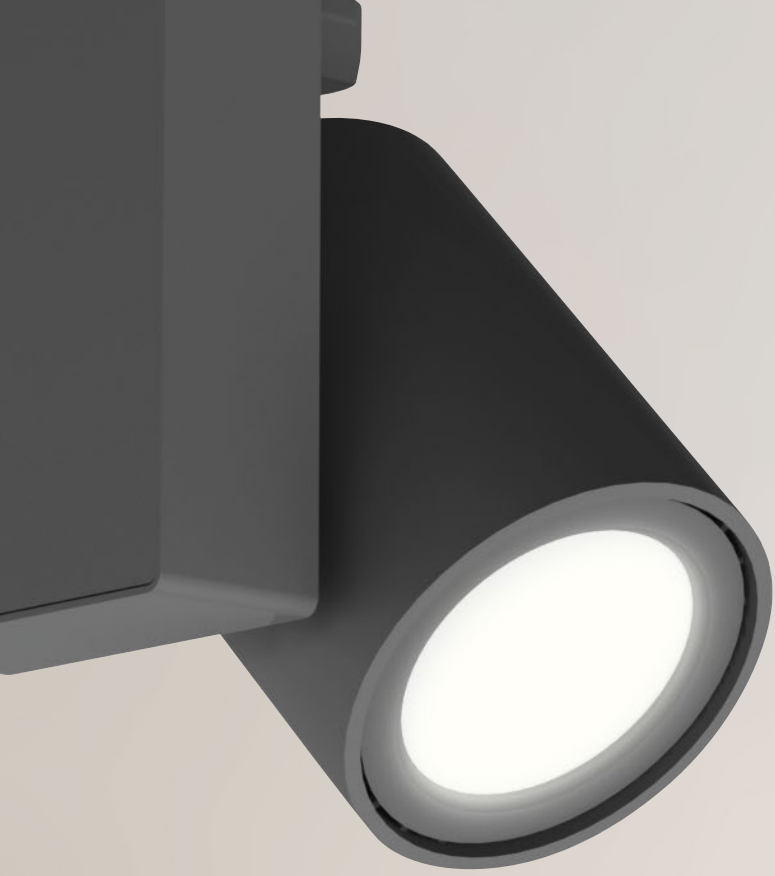
MultiOne Engineering

For the development and quality environment.

MultiOne Workflow

For the production environment.





“

**Flexibility, cost saving
and multi-functional,
based on the future.”**

Creating flexibility

The Philips MultiOne Configurator is the most flexible tool because:

- You can use this tool for all the programmable drivers of the Philips portfolio.
- It provides access to all features build in the driver.
- You can shift the configuration (late stage configuration).
- It combines configuration with diagnostics.

Creating cost saving

Electronic drivers have become more intelligent. More control options are now being integrated into the drivers. With the use of this tool together with those programmable drivers, you can:

- Reduce energy cost by using features as Dynadimmer, Constant Light Output, Corridor Mode, Lumistep, different dimming patterns.
- Reduce cost by creating flexibility in your product portfolio by programming features like the output current (in the operational window of the driver), lumen output.
- Limit the complexity and reduce cost in your logistics and process.

Multi-functional

You can use this tool to:

- Program a luminaire.
- Test it.
- Configure it automatically in production.
- Read out its status.
- Do a complete quality analysis if there are returns from the field.

Future development

Continuous development of new drivers, upgrading of drivers, new developments on electronics (PC and operating systems included) makes a regular upgrade of the MultiOne configurator needed. The software upgrades are available on the central website, www.philips.com/MultiOne, included all needed documentation.

Also the tooling is continuous improving. The SimpleSet® including all needed technology is used in our new drivers. With the new MultiOne SimpleSet interface, configuration can be done wireless. An ideal solution for the wirelessly production environment.

More information of SimpleSet:

www.philips.com/SimpleSet

SimpleSet

Simply touch to configure

MultiOne Configuration Software

Simply install MultiOne configuration Software. Connect the MultiOne SimpleSet® interface and choose the configuration required for the Xitanium LED driver.

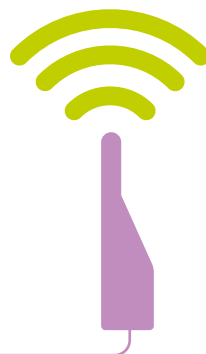


SimpleSet®
Simple, fast and wireless configuration

Xitanium LED driver

Xitanium LED drivers can be wirelessly configured, without a connection to mains power at any time during the manufacturing process.

Xitanium LED driver



MultiOne SimpleSet® interface

A small handheld device needs to be held near the Xitanium LED driver which is to be configured. The MultiOne Configurator Software will indicate a green tick to confirm a successful configuration of the Xitanium LED driver.



Product specifications

MultiOne Configurator

The MultiOne Configurator consists of 2 building blocks:

- MultiOne Interface tool (including cable).
- MultiOne Software.

MultiOne Interface tool



LCN8600/00 MultiOne interface USB2DALI

The interface that can be used with the MultiOne PC software to commission, configure, diagnose drivers via the DALI interface.



LCN8650/10 MultiOne interface USB2ZigBee

The dongle that can be used with the MultiOne PC software to commission and configure the ActiLume Wireless controllers using ZigBee.

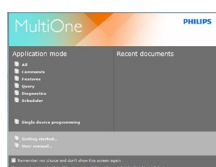


LCN9600 MultiOne SimpleSet interface

The interface that can be used with the MultiOne PC software to configure drivers wirelessly using SimpleSet® technology.

MultiOne Software

The MultiOne Configurator software is free and downloadable from our website www.philips.com/MultiOne and consists of:

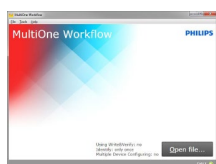


MultiOne Engineering

Especially developed to access all functionality of the driver; to configure, diagnose and prepare the configuration file for the production environment or field.

Includes also:

- DALI commands, scheduler.
- SimpleSet®.



MultiOne Workflow

Developed to configure all devices or subassemblies in the production environment or field in a simple and quick way.

MultiOne Features

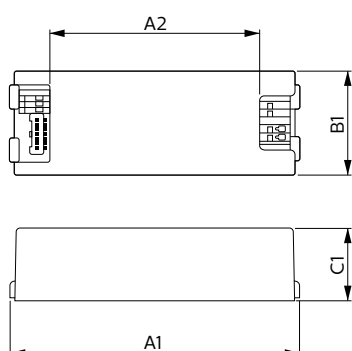
Depending on the type of driver a combination of features can be configured. With these features you can create diversity (adjustable output current, ...) but also extra security (Module temperature Protection, DC emergency, ...) including cost down improvements (Constant Light Output, Dynadimmer, corridor mode, ...).

Device feature	Product group				
	LED			HID	Fluorescent
	Indoor	Outdoor Type 1	Outdoor Type 2	-	-
Active cooling	•				
Module temperature protection	•	•	•		
DC emergency	•				•
End of life indication		•	•		
Light source operating hours		•	•		
Energy meter			•	•	•
Lamp burn-in					•
Lamp selection				•	•
Quick lamp start					•
Adjustable output current	•	•	•		
Adjustable light output			•	•	
Adjustable startup time		•	•		
Constant light output	•	•	•	•	
Dimming interface		•			•
1-10 V dim level		•	•		
AmpDim		•		•	
LumiStep		•	•		
LineSwitch		•	•	•	
Touch and dim	•				•
Min dim level	•				
Dynadimmer		•	•	•	
Corridor mode	•				•

Mechanical characteristics

MultiOne interface USB2DALI (dimensions in mm)

Product name	A1 (Norm)	A2 (Norm)	B1 (Norm)	C1 (Norm)
LCN8600/00 MultiOne interface USB2DALI	170	128	46	32



Ordering information

MultiOne configurator

Product name	12 NC	EOC
Philips MultiOne interface		
LCN8600/00 MultiOne interface USB2DALI	9137 003 46703	8718291 209461 00
LCN8650/10 MultiOne interface USB2ZigBee	9137 003 59203	8718291 747659 00
LCN9600 MultiOne SimpleSet interface	Contact your local sales representative	
Philips MultiOne software		
MultiOne Engineering	Free download via website:	
MultiOne Workflow	www.philips.com/MultiOne	

