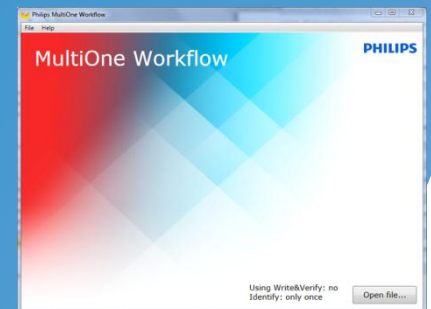


The MultiOne Configurator

*The unique tool for the Philips programmable devices –
Philips MultiOne Workflow Software*

Linda Janssens

Philips Lighting
6 July 2015



PHILIPS

MultiOne Configurator

Content

- 1. Product Introduction
- 2. Basics
- 3 Software
- 4. MultiOne Workflow/ Command Line
- 5. More info



1. Product introduction

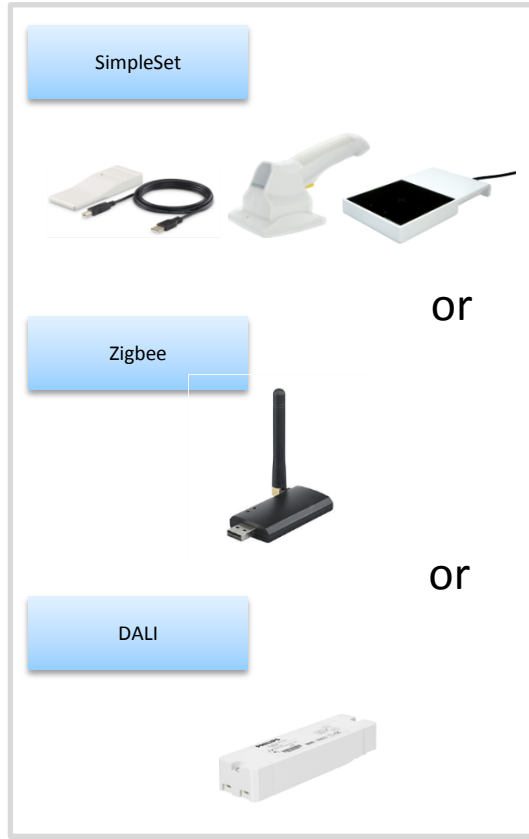
Basic blocks

1.



PC with unique
MultiOne Software

2.



Certified interface tool

3.



Philips drivers with
MultiOne Technology

2. Basics

PC with our MultiOne Software

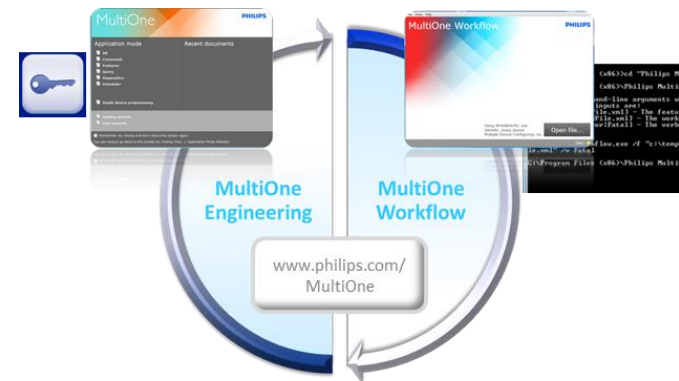
Laptop or PC with conditions:

- Microsoft Windows 7, Windows 8 or Windows 8.1
- One or multiple USB 2.0 port(s):
- At least 35 MB of free disk space
- *Using Windows Xp will be phased out end of 2015*



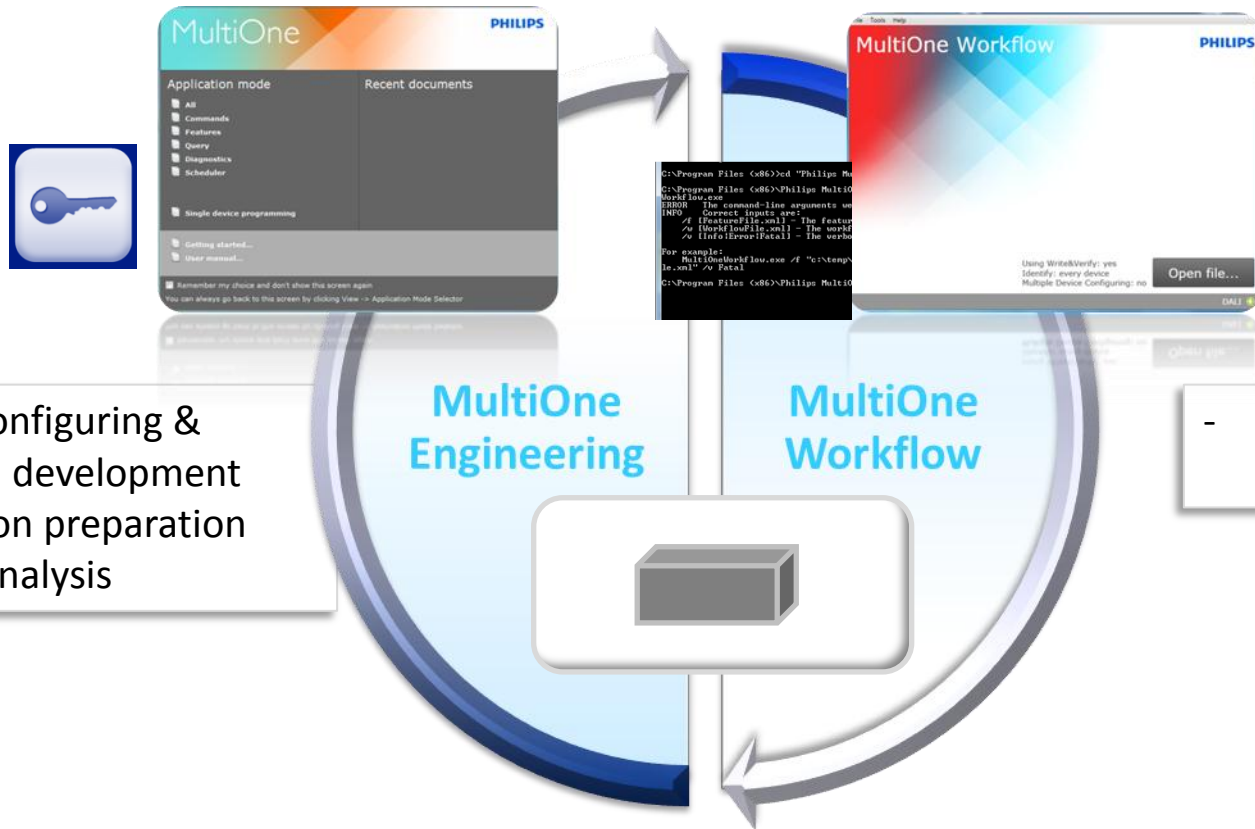
Software from website:

- Free download www.philips.com/MultiOne
- Software for different application (status on wk 28)
 - MultiOne Engineering 2.9
 - MultiOne Workflow2.2 / CommandLine
- Protected via User Software Key
- One software
 - all type of Interfaces
 - total product portfolio
- Automatic upgrade



3. MultiOne System

Different type of Software packages

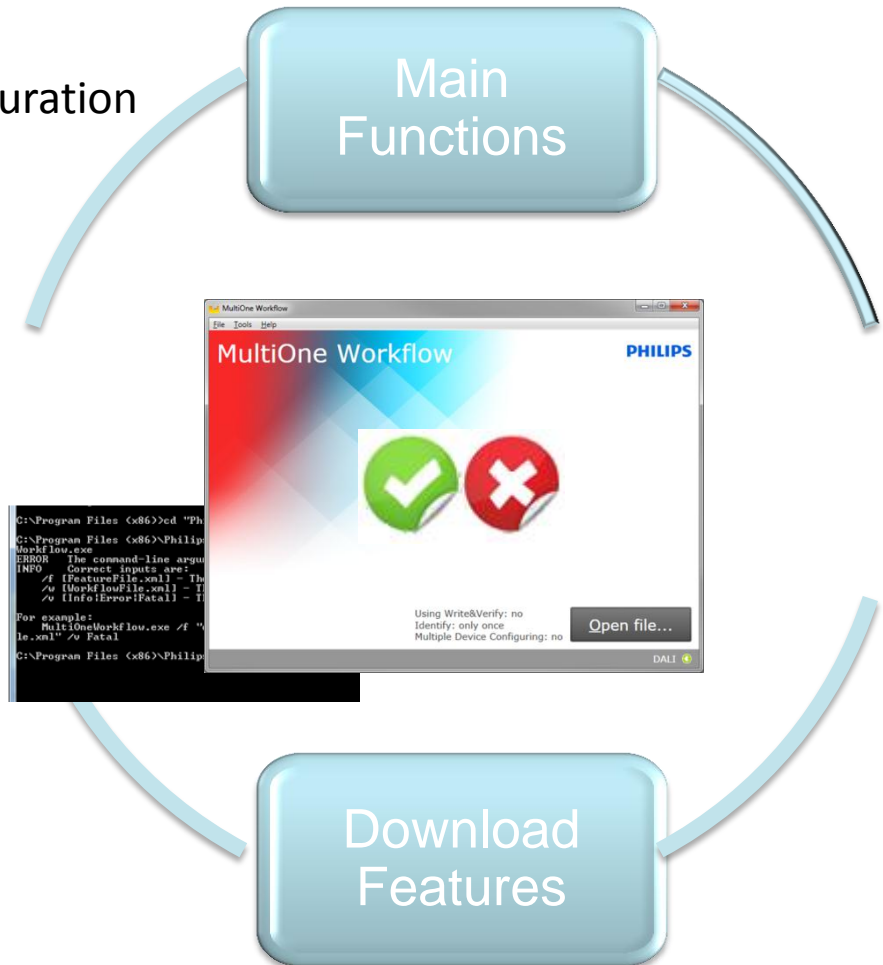


4.MultiOne configurator

MultiOne Workflow / Command Line

Benefits :

- Special developed for the production environment
- Easy to operate
- Single or multiple device (only DALI) configuration
- Create own level of robustness
- Simplified error messages

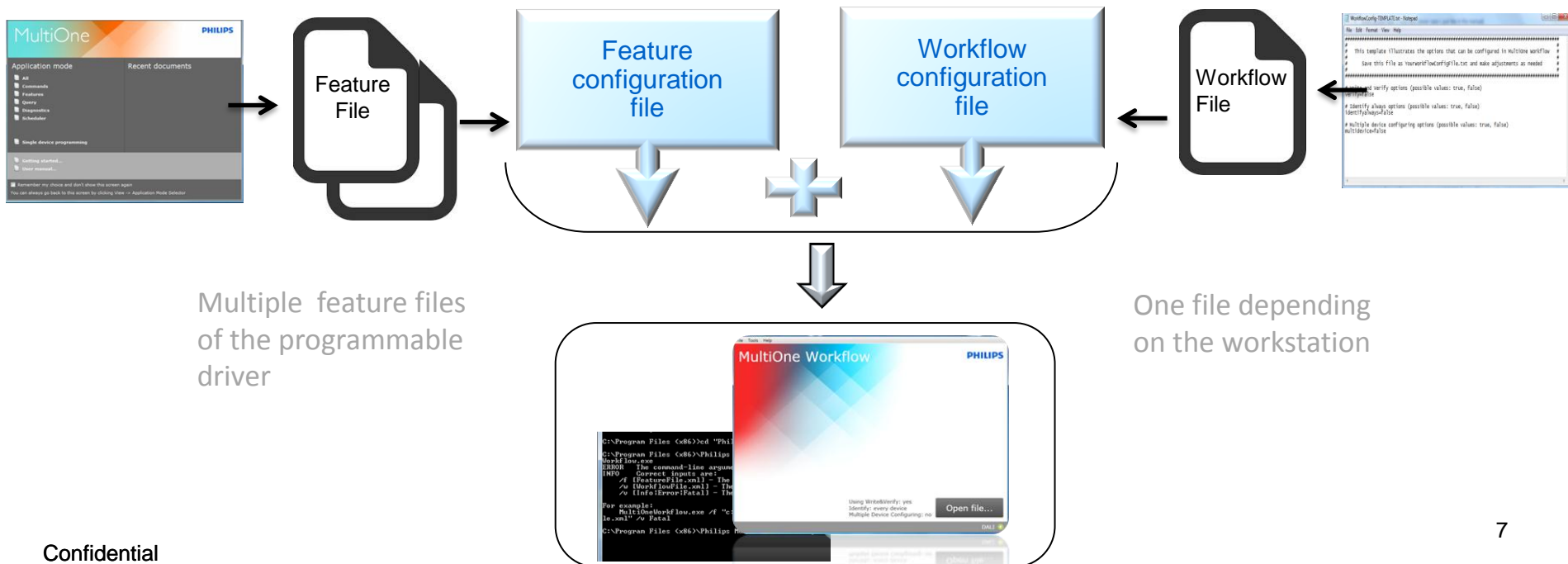


MultiOne configurator

MultiOne Workflow inputs

Benefits of the “file input” :

- Flexibility in settings
- Choice : Robustness <-> Speed
- Easy to operate
- Use of files created with MultiOne Engineering



MultiOne configurator

MultiOne Workflow - 2 solutions

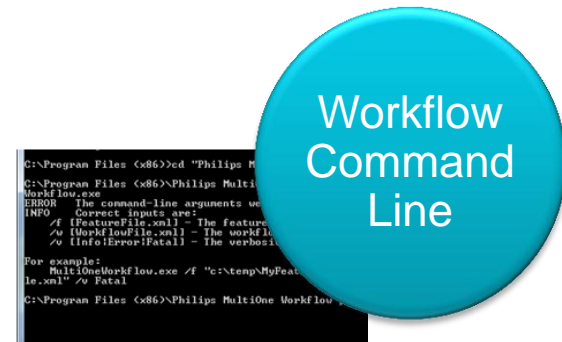
Configuring in Production:

-> **2 different solutions possible**

- 1. Simple quick installation -> GUI**
- 2. Total integration -> Command Line**



Workflow
GUI



Workflow
Command
Line

MultiOne Command Line :

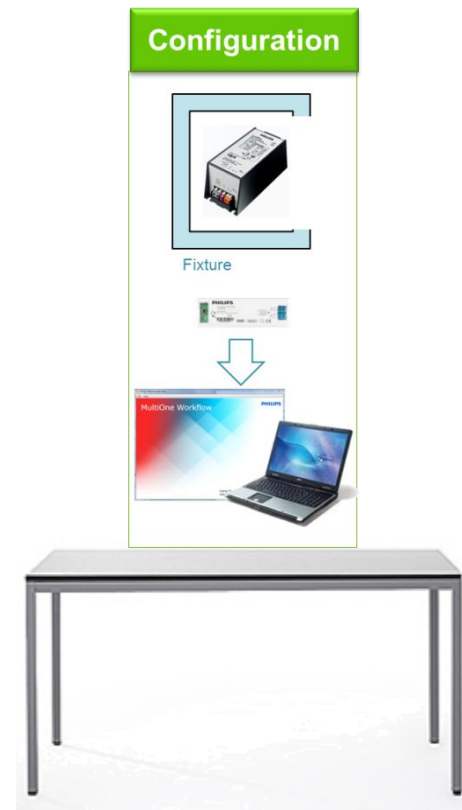
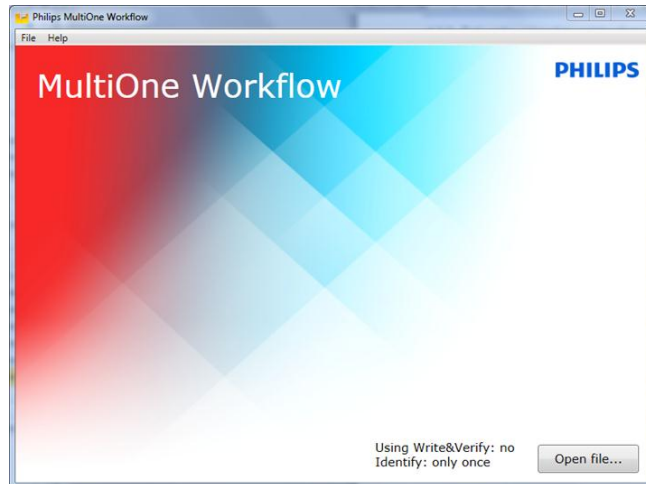
- runs from the Windows command line (console, MS-DOS prompt)
- is installed in the same directory as MultiOne Workflow

MultiOne configurator

Workflow – solution: graphic user interface

Configuring in Production, separate unit

- Simple, not integrated, production station



MultiOne configurator

Workflow - solution: Command Line Interface

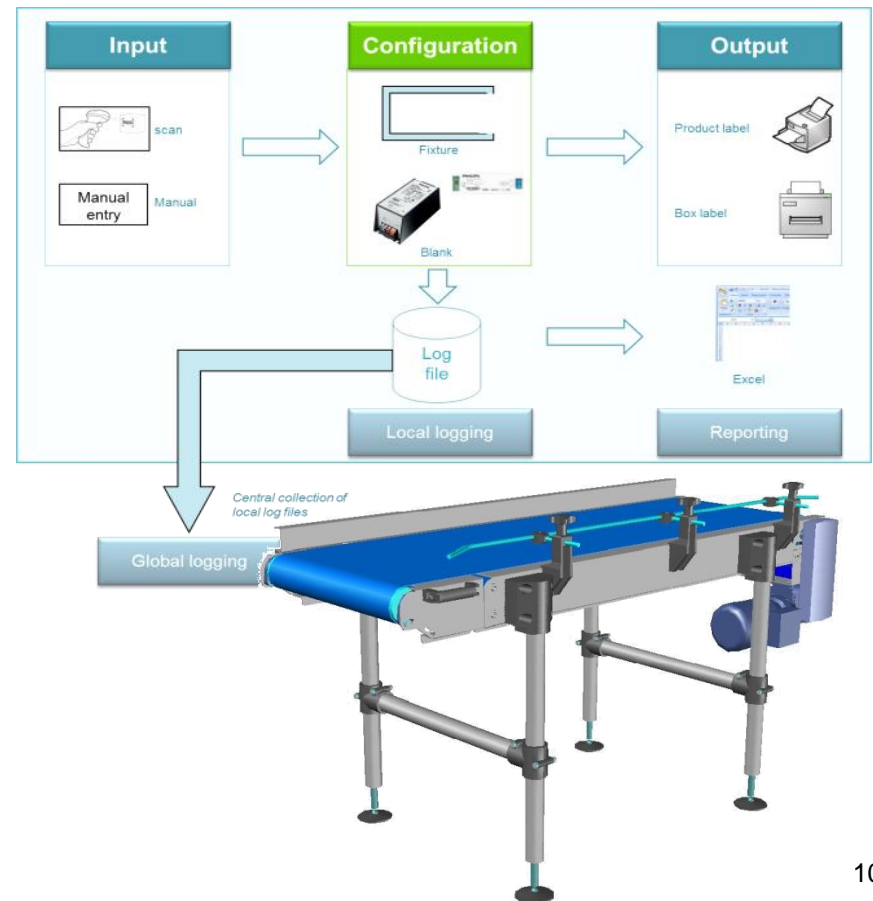
Configuring in Production

- Use integrated station with printer, ...

⇒ MultiOne Command Line integrates into customer's tool chain

⇒ Customer want to integrate/automate configuring with testing and factory systems (like SAP)

⇒ MultiOne Command Line is only used for writing settings from feature file



MultiOne configurator

Summary: usage (concept)

Development environment -> functionality and diagnostics

Development:
Defines features



Development: creates file
Name can include drivetype
/features/...
decided by the customer



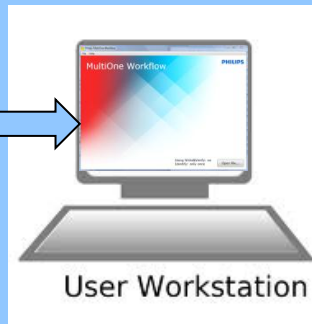
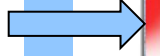
Feature file creation



Configure driver

Production environment -> quick and robust configuration
of driver

file



User Workstation

Operator configures



OR



Sub assembly



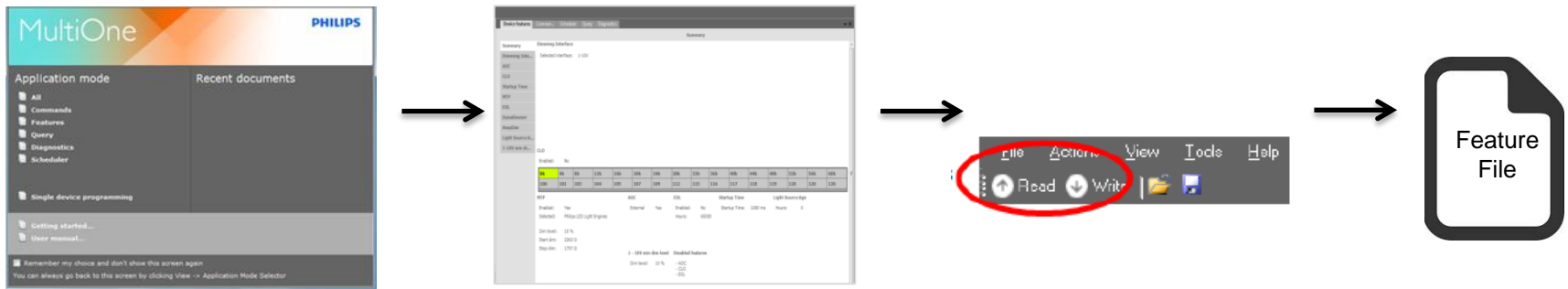
Devices



MultiOne configurator

Creation :Feature configuration file

First step: create feature file with MultiOne Engineering



Advice:

- > use latest MultiOne Engineering to generate Feature file
 - > parameters and features -> linked to product (see manual)
- > **Feature configuration file** :
 - > to link the file to the product, color the check box before saving (see manual)
 - > location of file on central system

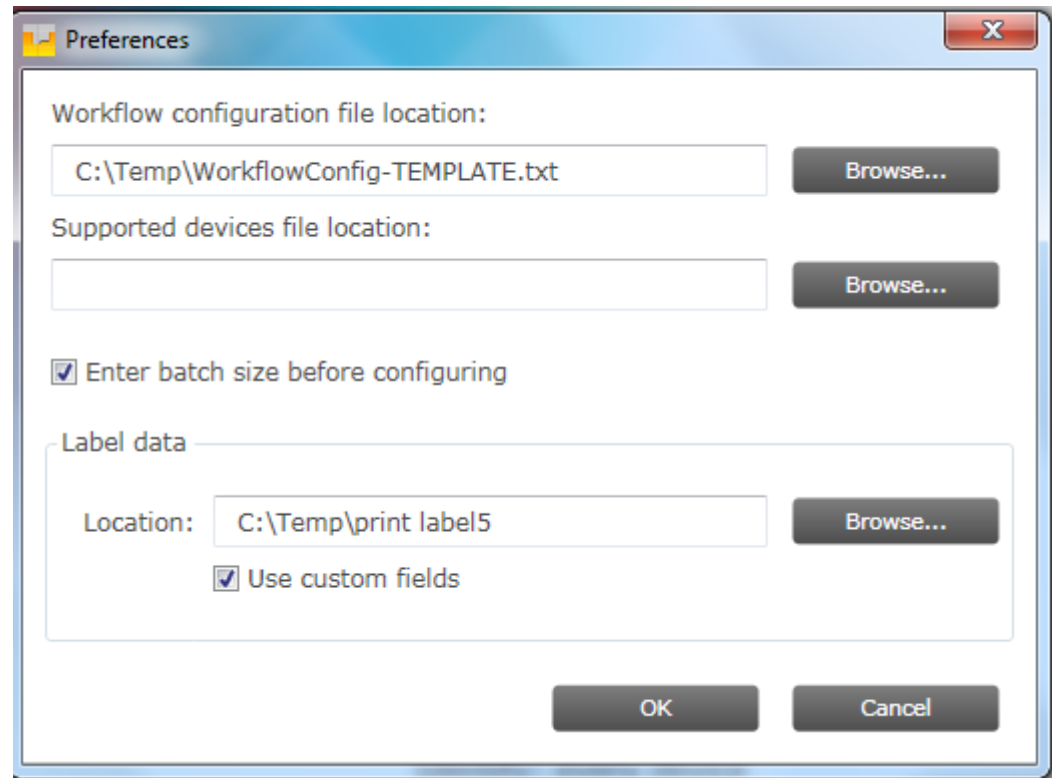
MultiOne configurator

Creation: Workflow configuration file

Second step: choose your settings with MultiOne Workflow to organize your workstation

Station settings that are possible:

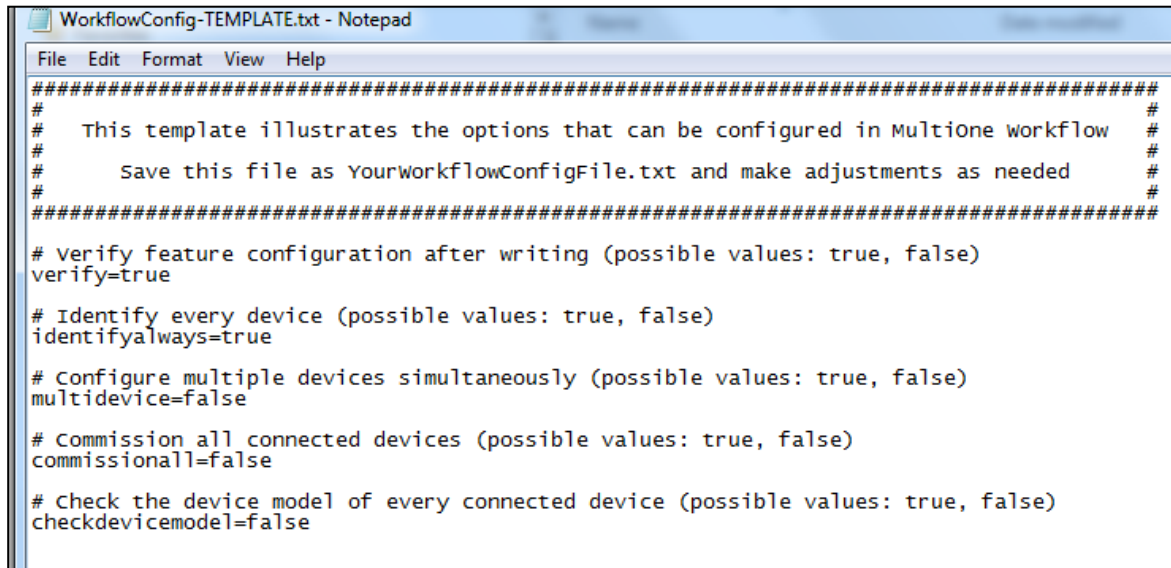
1. Workflow configuration
2. Supported devices
3. Batch size
4. Label or data printing
5. Custom fields



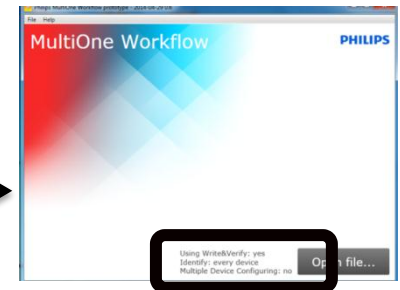
MultiOne configurator

Creation: Workflow configuration file

Third step: change the workflow configuration file settings



```
#####  
#  
# This template illustrates the options that can be configured in Multione workflow #  
#  
# Save this file as YourWorkflowConfigFile.txt and make adjustments as needed #  
#  
#####  
# verify feature configuration after writing (possible values: true, false)  
verify=true  
# Identify every device (possible values: true, false)  
identifyalways=true  
# Configure multiple devices simultaneously (possible values: true, false)  
multidevice=false  
# Commission all connected devices (possible values: true, false)  
commissionall=false  
# Check the device model of every connected device (possible values: true, false)  
checkdevicemodel=false
```



Advice :

- > configure the products in the workstation: single, multiple device, verify,...
- > Run system -> see settings on screen
- > feature configuration file name visible on the screen
- > **workflow configuration file**
 - > once set (one file) , fixed way of working in station
 - > simple error messages on screen

MultiOne configurator

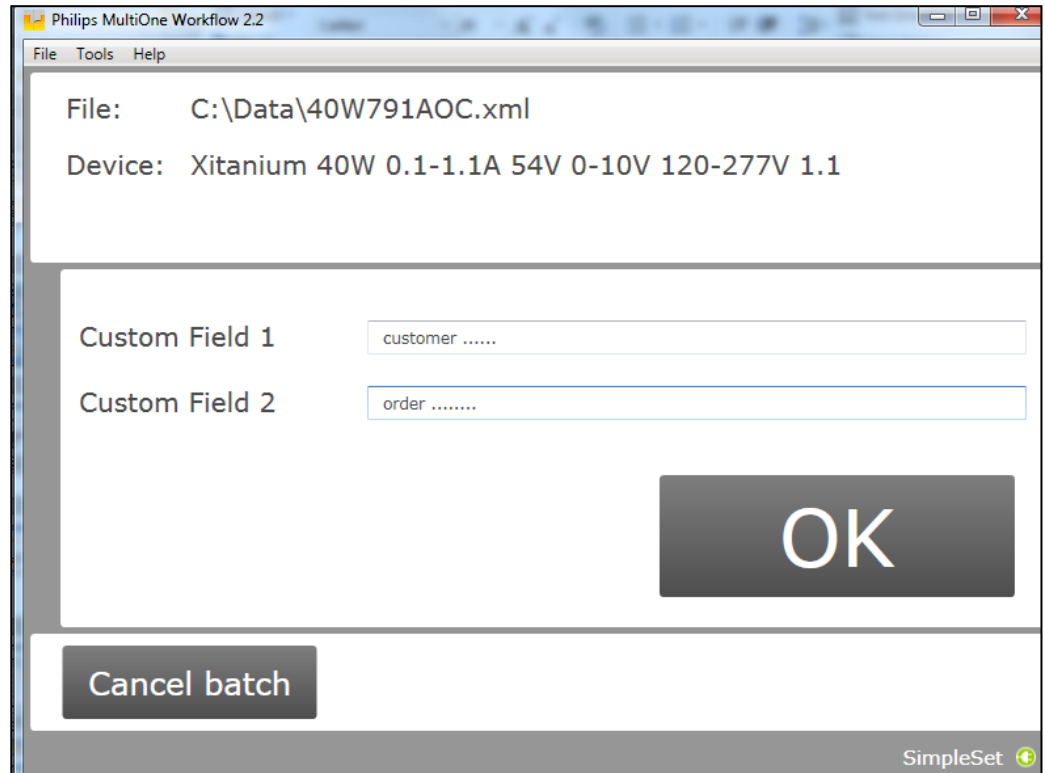
Creation: Workflow configuration file

Fourth step: after opening the feature file, enter

- the custom fields (example customer, order number,...)
- batch size

Name of the file and driver
are visible

Start configuring

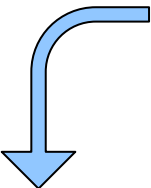


MultiOne configurator

Creation: Workflow configuration file

Fifth step: csv files are created with all the information of the configured drivers on the address

Possible to use for
-printer
-reporting



Label data

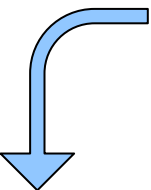
Location: C:\Temp\print label5

Browse...

☒ Use custom fields

OK

Cancel



Name	Date modified	Type	Size
Xi LP 75W 0.2-0.7A SL 230V S240 sXt 2015-07-03T11-43-42.csv	7/3/2015 11:43 AM	Microsoft Excel Comma Separated Values File	1 KB
Xi LP 75W 0.2-0.7A SL 230V S240 sXt 2015-07-03T11-43-55.csv	7/3/2015 11:43 AM	Microsoft Excel Comma Separated Values File	1 KB
Xi LP 75W 0.2-0.7A SL 230V S240 sXt 2015-07-03T11-44-04.csv	7/3/2015 11:44 AM	Microsoft Excel Comma Separated Values File	1 KB

Date	Time	FeatureConfigurationFilePath	FeatureConfigurationFileName	Configuration Result	Custom Field 1	Custom Field 2	Device Model	Minimum DimLevel	AOC Current
dd-MM-yyyy	hh:mm							%	mA
3/7/2015	11:43	C:\Data	150w2.91.xml	Successful	customer x	order y	Xi LP 75W 0.2-0.7A SL 230V S240 sXt	10	200

MultiOne configurator

More info : www.philips.com/MultiOne

User manual

