

How to install ethernet drivers in MS Windows OS via USB-C to USB-A

For Philips 258B6QUEB/00

Author: Kevin Yang (Technical Product Manager)

Region: Europe

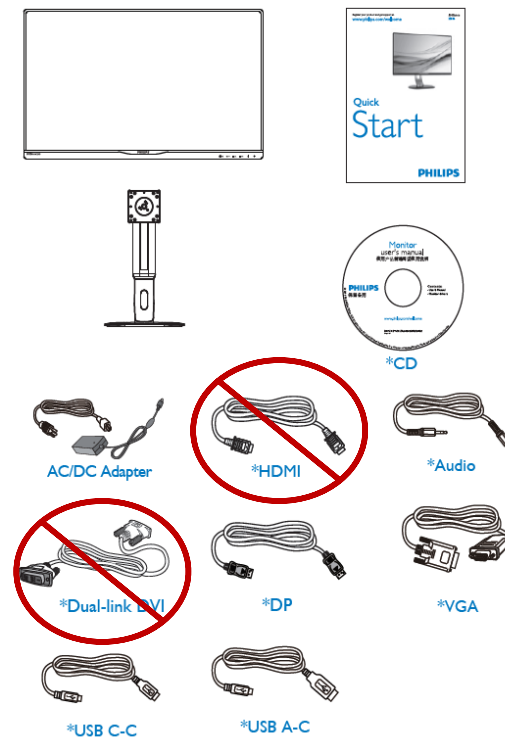
May 17th, 2017

What is in the box

Philips 258B6QUEB – According to Cable Bundle M6 “World Wide”



1 Package contents

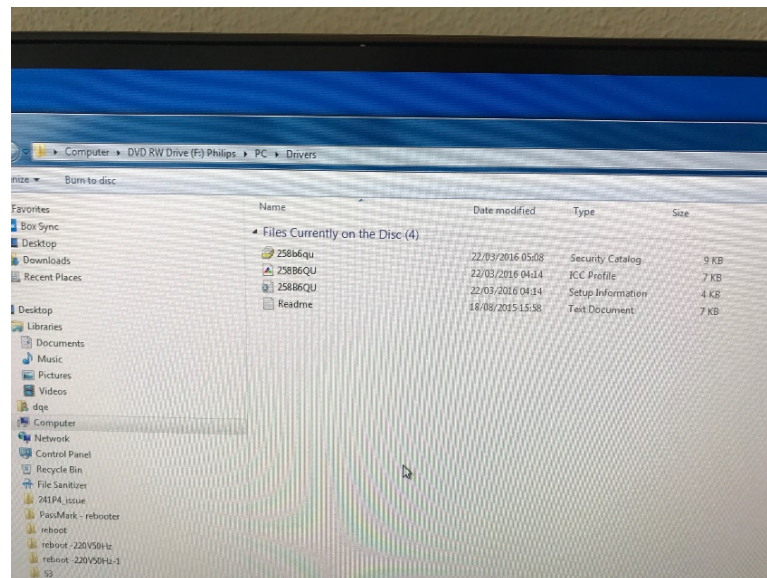


*Different according to region

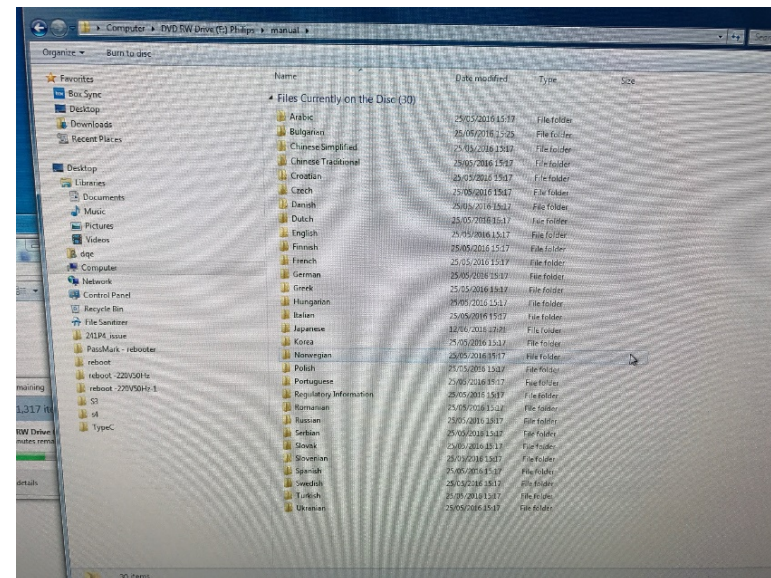
What is on the CD-ROM

Philips 258B6QUEB

Drivers

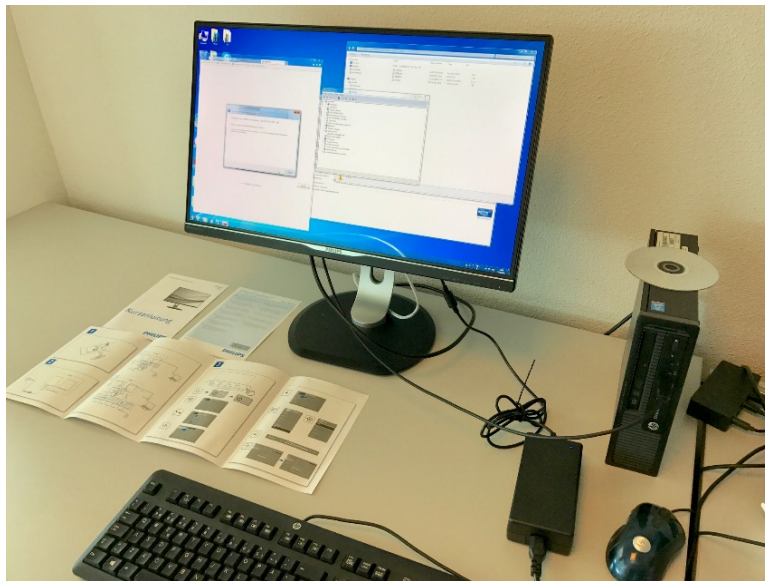


User Manuals



Philips 258B6QUEB – General Setup

Philips 258B6QUEB – without USB-C to USB-C

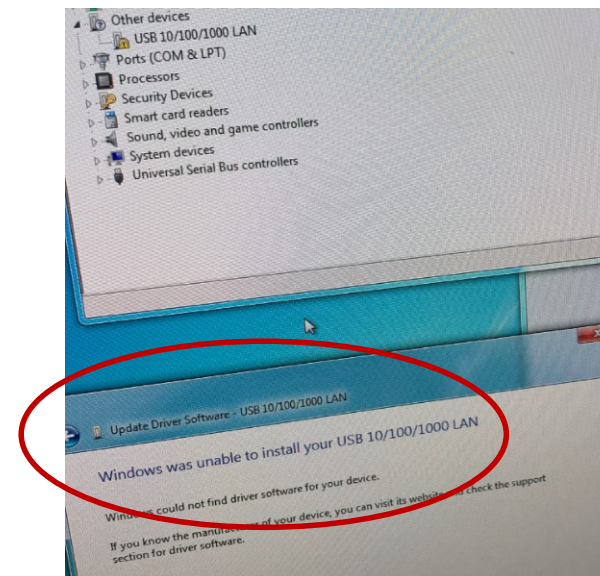
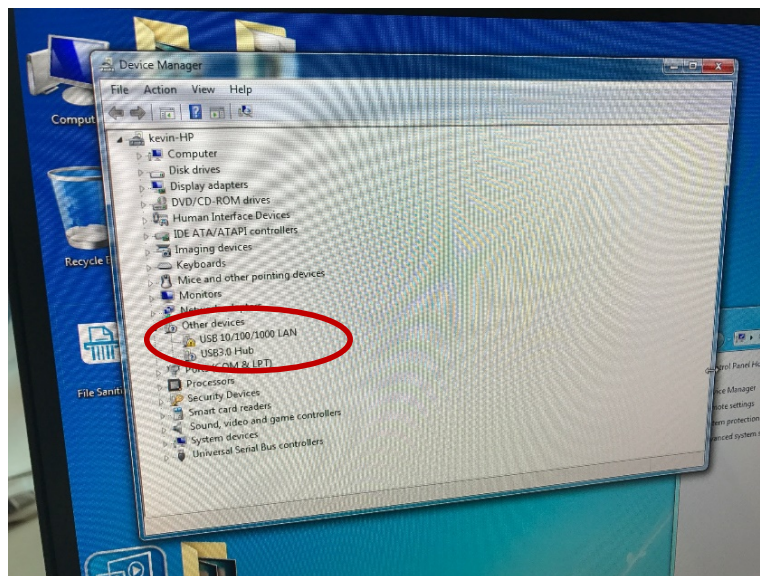


- Source: DisplayPort
- Other connections:
 - Power Adaptor
 - Ethernet
 - USB-C to USB-A
 - For USB Hub
 - For Ethernet



Cannot find Ethernet LAN drivers

Philips 258B6QUEB – Ethernet connected to the monitor and not the PC/laptop



- Windows automatically find new devices from the monitor after you connect the USB-C from the monitor to the USB-A to the PC/laptop.

- The USB Hub will be automatically installed by Windows (tested on Win7 Pro). But the Ethernet LAN drivers cannot be found by Windows. On the CD-ROM, no drivers are included.

Solution

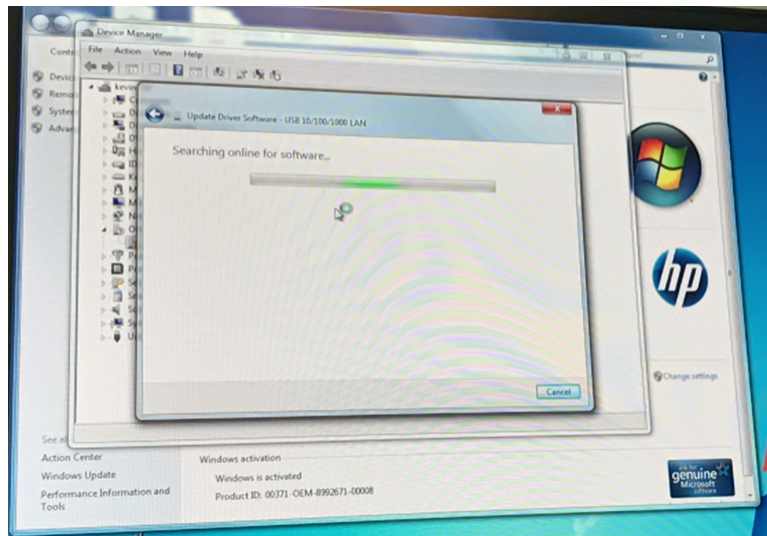
Philips 258B6QUEB

1. Connect the monitor to the PC/laptop with the USB-C to USB-A cable, in order for Windows device manager to detect the Ethernet port
2. Connect the ethernet cable to the PC/laptop and have Windows download the latest drivers for the Monitor's ethernet port from the Internet
3. Once the ethernet port drivers are installed, connect the ethernet cable from the PC/laptop to the monitor

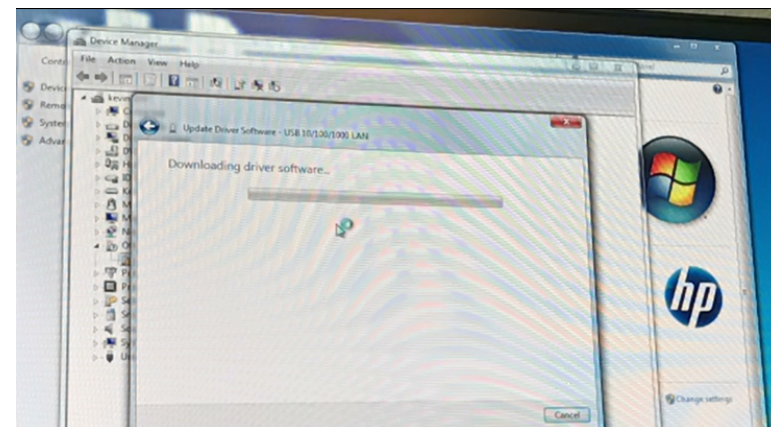
You can now enjoy using the Internet from the Monitor while connecting to the PC/laptop via USB-C (Monitor) to USB-A (PC/laptop). To get image, you still need to connect the monitor via VGA, DisplayPort, HDMI or DVI

Download Ethernet LAN drivers

Philips 258B6QUEB – Ethernet cable connected to the PC/laptop



- Windows automatically find new drivers for your ethernet port (your PC/laptop needs to have Internet connection).



- The ethernet port will be automatically installed by Windows (tested on Windows 7 Pro).



Thank You