

# Professional TV Features

	Signature	MediaSuite	PrimeSuite	EasySuite	Studio	Heartline
<b>Model</b>						
Android OS	✓	Upgradable				Upgradable
Chromecast™ built-in		✓				✓
Miracast	✓					✓
Google Assistant		✓ (Android P)				✓
Netflix Certified for Hospitality Use		✓ (Android P)				✓
DirectShare	✓	✓				✓
CMND&Control	✓	✓	✓	✓	Off-line channel editor	✓
CMND&Create	HTML	HTML/Banners/APK	✓			HTML/banners/APK
CMND&Check-In	✓	✓	✓*			✓
IPTV Channels	✓	✓	✓			✓
OTT Channels		✓				✓
Custom Dashboard	HTML	HTML/APK	HTML			HTML/APK
Brandable Homescreen		✓	✓	✓		✓
Welcome application	logo	✓	logo	logo	logo	✓
Apps	HTML/APK	HTML/Google Play Store™	YouTube			HTML/Google Play Store™
AppControl	✓	✓				✓
USB Playback	✓	✓	✓	✓	✓	✓
Serial Xpress Protocol	✓	✓	✓	✓		✓
MyChoice	✓	✓	✓	✓		✓
Theme TV	✓	✓	✓	✓		✓
8 day EPG, Now + Next	✓	✓	✓	✓		✓
Weather forecast	✓	✓	✓	✓		✓
Location Name	✓	✓	✓	✓		✓
On-screen clock & alarm	✓	✓	✓	✓		✓
Nurse call system Compatible	✓	✓	✓	✓		✓
Multi-remote control	✓	✓	✓	✓	✓	✓
Headphone out	✓	✓	✓	✓	✓	✓
Independent main speaker mute	✓	✓	✓	✓	✓	✓
Double isolation class II	✓	✓	✓	✓	✓	✓
Galvanically isolated headphone out						✓
Tough Glass front						✓
Reading Light						✓
IEC 60601 - 1						✓
Antimicrobial Plastics						✓
<b>Ease of Installation</b>						
Hotel Mode (Menu, Volume and Local Control locking)	✓	✓	✓	✓	✓	✓
Prison Mode	✓	✓	✓	✓	✓	✓
Single Channel List	✓	✓	✓	✓	✓	✓
Cloning	✓	✓	✓	✓	✓	✓
Instant initial cloning	✓	✓	✓	✓	✓	✓
<b>Anti-theft</b>						
RC Battery Lock	✓	✓	✓	✓	✓	✓
Kensington Lock	✓	✓	✓	✓	✓	✓

\*CMND&Check-In will be available in future Update in PrimeSuite series.



# Professional TV Accessories



Type	22AV1601B	22AV1604B	22AV1903A	22AV1904A	22AV1905A	22AV1905B	22AV2005B
Dimensions (WxDxH)	184x48x20 mm	203x48x20 mm	184x48x20 mm	184x48x20 mm	184x48x20 mm	184x48x20 mm	205x53x20 mm
Battery	2xAAA (Not Included)	2xAAA (Not Included)	2xAAA (Not Included)	2xAAA (Not Included)	2xAAA (Not Included)	2xAAA (Not Included)	2xAAA (Not Included)
Compatible Models	Multi-RC Compatible, Studio/ES/MS/PS/Sig	Multi-RC Compatible, Studio/ES/MS/PS/Sig	Multi-RC Compatible, ES/PS/MS	Multi-RC Compatible, ES/PS/MS	Multi-RC Compatible, ES/PS/MS	Multi-RC Compatible, MS	Multi-RC Compatible, MS
Features	Glow-in-the-Dark buttons, RC Battery Door Lock, Cable Strap Ready, Low-battery Detection, Mode Storage	Top surface cleanable with Alcohol, RC Battery Door Lock, Cable Strap Ready, Low-Battery Detection, Mode Storage	RC Battery Door Lock, Low-battery Detection	Glow-in-the-Dark Clock button, RC Battery Door Lock, Cable Strap Ready, Low Battery Detection	Glow-in-the-Dark Clock button, RC Battery Door Lock, Cable Strap Ready, Low Battery Detection	Glow-in-the-Dark Clock button, RC Battery Door Lock, Cable Strap Ready, Low Battery Detection	Glow-in-the-Dark Clock button, RC Battery Door Lock, Cable Strap Ready, Low Battery Detection, Mode Storage

Type	22AV2025B	22AV9574A
Dimensions (WxDxH)	205x53x20 mm	205x53x20 mm
Battery	2xAAA (Not Included)	2xAAA (Not Included)
Compatible Models	Multi-RC Compatible, MS	Studio/ES/PS/MS/Sig
Features	Google Assistant Compatible, Glow-in-the-Dark Clock button, RC Battery Door Lock, Cable Strap Ready, Low Battery Detection, Mode Storage	Quick TV installation, Distinguishable design, Manage My-Choice directly

Model	22AV1970A/12
Dimensions (WxDxH)	109x88x27 mm
Weight	0.130 kg
Compatible Models	PS/MS/Sig
Features	High-performance Internet over coax, Invisible Design

Model	22AV1860A
Dimensions (WxDxH)	70x28x21 mm
Weight	0.035 kg
Compatible Models	PS/MS/Sig
Features	Automatic Time Sync, Easy Clock Visibility, Adjustable Brightness Levels

Professional Display Solutions

Professional TV



# Inspirational display solutions

## Product Overview 2020 H1 - Professional TV

© 2020 Koninklijke Philips N.V. All rights reserved. Specifications are subject to change without notice. Trademarks are the property of Koninklijke Philips N.V. (Royal Philips) or their respective owners.

philips.com/professionaldisplaysolutions





### Studio



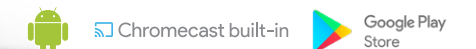
### EasySuite



### PrimeSuite



### Heartline



\*5Yearoptionalwarranty

	HFL2889				HFL2899			HFL3014				HFL4014				HFL5014W	HFL5114W
	24HFL2889P	32HFL2889S	43HFL2889S	49HFL2889S	55HFL2889S	65HFL2889S	75HFL2889S	24HFL3014	32HFL3014	43HFL3014	50HFL3014	28HFL4014	32HFL4014	43HFL4014	50HFL4014	19HFL5014W	19HFL5114W
Screen Size	60 cm (24")	80 cm (32")	108 cm (43")	123 cm (49")	139 cm (55")	164 cm (65")	190 cm (75")	60 cm (24")	80 cm (32")	108 cm (43")	126 cm (50")	70 cm (28")	80 cm (32")	108 cm (43")	126 cm (50")	47 cm (19")	47 cm (19")
Resolution	1366x768p	1366x768p	1920x1080p	1920x1080p	3840x2160p	3840x2160p	3840x2160p	1366x768p	1366x768p	1920x1080p	1920x1080p	1366x768p	1366x768p	1920x1080p	1366x768p	1366x768p	1366x768p
Wide Colour Gamut	N/A				90%			N/A				N/A				N/A	
Memory	N/A				N/A			N/A				N/A				16GB	
Display	LED HD	LED HD	LED Full HD	LED Full HD	4K Ultra HD LED			LED HD TV	LED HD TV	LED Full HD	LED Full HD	LED HD TV	LED HD TV	LED Full HD	LED Full HD	LED HD TV	LED HD TV
Brightness	220 cd/m <sup>2</sup>	250 cd/m <sup>2</sup>	300 cd/m <sup>2</sup>	300 cd/m <sup>2</sup>	350 cd/m <sup>2</sup>	350 cd/m <sup>2</sup>	320 cd/m <sup>2</sup>	250 cd/m <sup>2</sup>	250 cd/m <sup>2</sup>	250 cd/m <sup>2</sup>	250 cd/m <sup>2</sup>	220 cd/m <sup>2</sup>	250 cd/m <sup>2</sup>	250 cd/m <sup>2</sup>	250 cd/m <sup>2</sup>	200 cd/m <sup>2</sup>	250 cd/m <sup>2</sup>
Sound Output power	5 (2x2.5) W	12 (2x6) W	16 (2x8) W	16 (2x8) W	16 (2x8) W	16 (2x8) W	16 (2x8) W	6 (2x3) W	16 (2x8) W	16 (2x8) W	16 (2x8) W	10 (2x5) W	16 (2x8) W	16 (2x8) W	5 (2x2.5) W	5 (2x2.5) W	
Colour cabinet	Black, translucent backcover	Black	Black	Black	Black			Black				Black				White	
Wireless	N/A				N/A			N/A				N/A				802.11 ac, Wifi-Direct	
Ethernet LAN RJ45 (Rear/Side/Bottom)	N/A				N/A			N/A				N/A				1/0/0	
HDMI (Rear/Side/Bottom)	2/0/0				2/1/0			2/0/0				2/0/0				1/0/0	
USB (Rear/Side/Bottom)	0/1/0				0/1/0			0/1/0				0/1/0				0/1/0	
SXP + IR IN/OUT RJ48 (Rear)	N/A				N/A			N/A				N/A				1	
DC 12V out (Rear)	N/A				N/A			N/A				N/A				N/A	
Headphone Mini Jack (Side)	1				1			1				1				1	
Speaker out Mini Jack (Rear)	N/A				N/A			N/A				N/A				N/A	
DVI Audio in (Rear)	N/A				N/A			N/A				N/A				1	
Digital Audio OUT (Rear/Bottom)	1/0 Coaxial (SPDIF)	1/0 (Optical)	1/0 (Optical)	1/0 (Optical)	1/0 (Optical)			1/0 (Optical)				1/0 (Optical)				N/A	
VGA (Rear)	1				1			1				1				N/A	
Component IN + L/R (Rear/Side)	N/A				N/A			N/A				N/A				N/A	
Antenna IN (Rear/Bottom)	1/0 (DVB-T2/C, HEVC FHD)				2/0 (DVB-T2/C/S2, HEVC FHD)			1/0 (DVB-T2/C, HEVC)				1/0 (DVB-T2/C, HEVC)				1/0 (DVB-T2/C, HEVC)	
CI Slot (Side)	1				1			1				1				N/A	
Set Dimensions (ex. Stand)	554x341x39/63 mm	735x442x77/89 mm	971x571x43/73 mm	1105x645x43/73 mm	1243x727x44/74 mm	1457x846x63 mm	1684x967x73 mm	560x337x35/45 mm	732x432x77 mm	970x563x78/84 mm	1128x655x81/86 mm	635x380x68/77 mm	732x432x77 mm	970x563x78/82 mm	1128x655x82/86 mm	469x326x39/49 mm	469x326x39/49 mm
Vesa Compatible	75x75 mm, M4	200x100 mm, M4	200x200 mm, M6	200x200 mm, M6	200x200 mm, M6	400x400 mm, M6	600x400 mm, M8	75x75 mm, M4	2xM6 (100 mm)	200x200 mm, M6	200x200 mm, M6	75x75 mm, M4	2xM6 (100 mm)	200x200 mm, M6	200x200 mm, M6	75x75 mm, M4	75x75 mm, M4
Product weight (ex. Stand)	3.3 kg	5.1 kg	8.3 kg	10.6 kg	14.5 kg	23.5 kg	39.6 kg	3.1 kg	4.5 kg	7.2 kg	11.3 kg	3.8 kg	4.5 kg	7.2 kg	3.45 kg	3.45 kg	
Typical Power Consumption	19 W	21 W	37 W	48 W	60 W	82 W	160 W	18 W	28 W	34 W	47 W	26 W	29 W	45 W	48 W	18 W	18 W
Energy Label	A+	A+	A++	A++	A++	A++	A+	A+	A+	A++	A++	A+	A+	A+	A+	A	A
Stand	Tabletop stand				Tabletop Stand			Edge stand				Edge stand				Handle bar	
Included Remote Control	22AV1407A/12				22AV1407A/12			22AV1903A/12				22AV1904A/12				N/A	



### MediaSuite



### MediaSuite



### MediaSuite



### MediaSuite



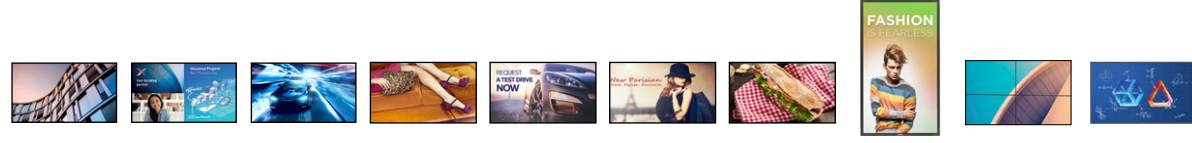
### Signature

\*5Yearoptionalwarranty

	HFL5014			HFL5114		HFL5114U		HFL6014				HFL6114U				HFL7011/2		65HFL711T/2	
	32HFL5014/12	43HFL5014/12	50HFL5014/12	32HFL5114/12	43HFL5114/12	43HFL5114U/12	50HFL5114U/12	43HFL6014U/12	50HFL6014U/12	55HFL6014U/12	65HFL6014U/12	43HFL6114U/12	50HFL6114U/12	55HFL6114U/12	65HFL6114U/12	49HFL7011/2	65HFL711T/2		
Screen Size	80 cm (32")	108 cm (43")	126 cm (50")	80 cm (32")	108 cm (43")	108 cm (43")	126 cm (50")	108 cm (43")	126 cm (50")	139 cm (55")	164 cm (65")	108 cm (43")	126 cm (50")	139 cm (55")	164 cm (65")	123 cm (49")	164 cm (65")		
Resolution	1920x1080p	1920x1080p	1920x1080p	1920x1080p	1920x1080p	3840x2160p	3840x2160p	3840x2160p	3840x2160p	3840x2160p	3840x2160p	3840x2160p	3840x2160p	3840x2160p	3840x2160p	3840x2160p	3840x2160p		
Wide Colour Gamut	N/A				N/A		N/A				N/A				85% NTSC		N/A		
Memory	16GB			16GB		16GB				16GB				16GB		16 GB			
Display	LED Full HD	LED Full HD	LED Full HD	LED Full HD	LED Full HD	4K Ultra HD LED		4K Ultra HD LED	4K Ultra HD LED	4K Ultra HD LED	4K Ultra HD LED	4K Ultra HD LED				4K Ultra HD LED			
Brightness	250 cd/m <sup>2</sup>	250 cd/m <sup>2</sup>	250 cd/m <sup>2</sup>	250 cd/m <sup>2</sup>	250 cd/m <sup>2</sup>	350 cd/m <sup>2</sup>	350 cd/m <sup>2</sup>	350 cd/m <sup>2</sup>	350 cd/m <sup>2</sup>	350 cd/m <sup>2</sup>	370 cd/m <sup>2</sup>	350 cd/m <sup>2</sup>	350 cd/m <sup>2</sup>	350 cd/m <sup>2</sup>	350 cd/m <sup>2</sup>	400 cd/m <sup>2</sup>	400 cd/m <sup>2</sup>		
Sound Output power	16 (2x8) W	20 (2x10) W	20 (2x10) W	16 (2x8) W	20 (2x10) W		20 (2x10) W	20 (2x10) W	20 (2x10) W	20 (2x10) W	20 (2x10) W	20 (2x10) W				20 (2x10) W	20 (2x10) W		
Colour cabinet	Black			Black		Black				Silver				Silver				Dark Grey Aluminum	
Wireless	802.11 ac, Wi-Fi Direct			802.11 ac, Wi-Fi Direct		802.11 ac, Wi-Fi Direct		802.11 ac, Wi-Fi Direct				802.11 ac, Wi-Fi Direct				802.11 ac, Wi-Fi Direct		802.11 ac, Wi-Fi Direct	
Ethernet LAN RJ45 (Rear/Side/Bottom)	1/0/0			1/0/0		0/0/1		0/0/1				0/0/1				0/0/1		0/0/1	
HDMI (Rear/Side/Bottom)	1/1/0			1/1/0		0/1/1		0/1/1				0/1/2				0/1/2		0/2/2	
USB (Rear/Side/Bottom)	1/1/0			1/1/0		0/1/1		0/1/1				0/1/1				0/1/1		0/2/1	
SXP + IR IN/OUT RJ48 (Rear)	1			1		0/1		1				1				1		1	
DC 12V out (Rear)	1			1		0/1		1				1				1		N/A	
Headphone Mini Jack (Side)	1			1		1		1				1				1		1	
Speaker out Mini Jack (Rear)	1			1/0		0/1		1				1				1		1	
DVI Audio in (Rear)	N/A			N/A		N/A		N/A				N/A				N/A		1	
Digital Audio OUT (Rear/Bottom)	1/0 (Optical)			1/0 (Optical)		N/A		0/1 (Optical)				N/A				0/1 (Optical)		N/A	
VGA (Rear/Bottom)	N/A			N/A		N/A		N/A				N/A				N/A		N/A	
Component IN + L/R (Rear/Side)	N/A			N/A		N/A		N/A				N/A				N/A		N/A	
Antenna IN (Rear/Bottom)	1/0 (DVB-T2/C HEVC)			1/0 (DVB-T2/C HEVC)		0/1 (DVB-T2/C HEVC)		0/1 (DVB-T2/C HEVC)				0/1 (DVB-T2/C HEVC)				0/1 (DVB-T2/C HEVC)		1/0 (shared with YPbPr)	
CI Slot (Side)	1			1		1		1				1				1		1	
Set Dimensions (ex. Stand)	732x432x77 mm	970x562.5x78/80.5 mm	1128x655x80.5/86 mm	732x432x77 mm	970x563x78/81 mm	973x565x78/81 mm	1128x655x81/86 mm	971x564x67/77 mm	1128x653x68/78 mm	1244x719x68/78 mm	1462x842x71/87 mm	964x561x60/75 mm	1120x650x60/78 mm	1234x714x61/78 mm	1459x841x64/86 mm	1094x661x20/40/45 mm	1455x837x40/50 mm		
Vesa Compatible	2xM6 (100 mm)	200x200 mm, M6	200x200 mm, M6	100x100 mm, M6	100x100 mm, M6	200x200 mm, M6	200x200 mm, M6	200x200 mm, M6	200x200 mm, M6	300x200 mm, M6	400x200 mm, M6	200x200 mm, M6	300x200 mm, M6	300x200 mm, M6	400x200 mm, M6	200x200 mm, M6	400x300 mm, M6		
Product weight (ex. Stand)	4.5 kg	7.2 kg	11.3 kg	4.5 kg	7.2 kg	TBD	TBD	8.7 kg	12.8 kg	18.4 kg	24.5 kg	TBD	TBD	TBD	TBD	14.5 kg	30.85 kg		
Typical Power Consumption	29 W	48 W	48 W	29 W	48 W	66 W	70 W	67 W	70 W	84 W	105 W	TBD	TBD	TBD	TBD	86 W	111 W		
Energy Label	A+	A+	A++	A+	A+	A	A+	A	A+	A+	A+	TBD	TBD	TBD	TBD	A	A+		
Stand	Edge stand			Edge stand		Edge stand		Tabletop swivel stand				Edge stand				Tabletop swivel stand		Edge stand	
Included Remote Control	22AV1905A/12			22AV1905B/00		22AV1905B/00		22AV1905A/12				22AV1905B/00				22AV1905B/00		22AV1505B/12	



## Signage Features



Model	B-Line	C-Line	3010Q	30Q-Line	50Q-Line	D-Line	P-Line	H-Line	X-Line	T-Line **
CMND	✓	✓	✓	✓	✓	✓	✓	✓	✓	✓
CMND&Control	✓	✓	✓	✓	✓	✓	✓	✓	✓	✓
CMND&Create	✓	✓				✓	✓*	✓	✓*	✓
CMND&Deploy					✓	✓	✓	✓*	✓*	✓
CMND&Calibrate						✓	✓	✓*	✓*	✓
Android	✓				✓	✓	✓	✓*	✓*	✓
Fallover			✓			✓	✓	✓	✓	✓
Clinical D Image			✓	✓	✓	✓	✓	✓	✓	✓
SmartPlayer	✓	✓		✓	✓	✓	✓	✓	✓	✓
SmartInsert			✓ (Only 65")			✓	✓	✓	✓	✓
SmartPower	✓	✓	✓	✓	✓	✓	✓	✓	✓	✓
SmartBrowser	✓	✓		✓		✓	✓	✓	✓	✓
WiFi	✓	✓			✓ (Optional)	✓	✓ (Optional)	✓*	✓*	✓
Memory Cache	✓	✓		✓		✓	✓	✓ (Only 55")	✓	✓
QuadViewer					✓	✓	✓	✓ (Only 75")	✓	✓
4G/LTE						✓ (Optional)	✓ (Optional)	✓*	✓*	✓ (Optional)
Wireless Screen-sharing	Chrome Cast Built-In	✓								
Google Play Store	✓									

\*Requires optional CRD50 OPS module  
\*\*Features may not be available on all models



### Public Venues

Maximize the viewing experience and generate revenue through advertising and promotion.



### Transportation

Guide travellers to their destination by using high visibility displays or interactive touch screens.



### Corporate

Communicate with your employees, welcome visitors, or impress new clients with a large format screen.



### Education

Improve communication with students, faculty, and visitors with everything from digital signage to interactive touchscreens.



### Retail

Upgrade the customer experience and promote your brand with dynamic, eye catching displays.



### Food & Beverage

Quickly communicate your menu or promote specials with attention grabbing digital menu boards.



**PHILIPS**

Professional Display Solutions

Signage Displays



**Inspirational display solutions**

**Product Overview 2020 H1- Signage**

© 2020 Koninklijke Philips N.V. All rights reserved. Specifications are subject to change without notice. Trademarks are the property of Koninklijke Philips N.V. (Royal Philips) or their respective owners.

[philips.com/professionaldisplaysolutions](https://philips.com/professionaldisplaysolutions)





Q-Line



H-Line



X-Line

\*3 year advanced exchange warranty

Model	32BDL3010Q	43BDL3010Q	50BDL3010Q	55BDL3010Q	65BDL3010Q	50BDL3050Q	55BDL3050Q	65BDL3050Q	75BDL3050Q	86BDL3050Q	55BDL3202H	75BDL3003H	49BDL3005X	55BDL3005X/BDL5588XH	55BDL1005X	55BDL1007X	55BDL3105X	55BDL3107X										
Screen Size	80 cm (32")	108 cm (42")	125.7 cm (50")	138.7 cm (55")	163.9 cm (65")	125.73 cm (50")	138.7 cm (55")	163.9 cm (65")	189.27 cm (75")	217.4 cm (86")	139.7 cm (55")	189.3 cm (75")	123.2 cm (49")	138.7 cm (55")	138.7 cm (55")	138.7 cm (55")	138.7 cm (55")	138.7 cm (55")										
Backlight Type	Direct-Lit LED					Edge-Lit LED					Direct-Lit LED																	
Placement	Landscape 18/7, Portrait 12/7			Landscape 18/7, Portrait 12/7																								
Resolution	1920x1080p			3840x2160p																								
Panel Technology	VA					IPS					SVA																	
Contrast Ratio	1200:1	3000:1	4000:1																									
Dynamic Contrast Ratio	500,000:1																											
Response Time	8 ms	6.5 ms	8 ms			9 ms	8 ms																					
Viewing Angles	178/178 degree																											
Display Colors	16.7 Million			1.07 Billion			16.7 Million			1.07 Billion						16.7 Million			1.07 Billion									
Brightness	350 cd/m <sup>2</sup>																											
Power Consumption (EPA)	50 W	75 W	115 W	145 W	115 W	140 W	145 W	115 W	410 cd/m <sup>2</sup>	237 W	290 W	290 W (typ)	382 W (typ)	450 cd/m <sup>2</sup>	500 cd/m <sup>2</sup> /700 cd/m <sup>2</sup>	175 W	175 W	500 cd/m <sup>2</sup>	700 cd/m <sup>2</sup>									
Video Input	DVI-I x1, HDMI (x2), USB, VGA (via DVI)		DVI-I x1, HDMI (x4), USB, VGA (via DVI)		4xHDMI 2.0, DVI, VGA via DVI, USB		USB, DVI-I x1, HDMI (x4), VGA (via DVI)		DVI-D, HDMI 2.0 (x2), VGA (Analogue D-Sub), USB			DVI-D, HDMI 2.0 (x4), VGA (Analogue D-Sub), USB, DisplayPort		*VGA, HDMI (x2), DVI, USB, DisplayPort, Component (RCA), Composite (RCA)*		*VGA (Analog D-Sub), DisplayPort (1.2), DVI-D, HDMI (x3), Component (RCA), Composite (RCA)*		*VGA, HDMI (2), DVI, DP, Component, Composite, USB, OPS*			*Component (RCA), Composite (RCA), DVI-D, HDMI (x2), VGA (Analogue D-Sub), DisplayPort (1.2)*							
Video Output	N/A																											
Audio Input	3.5 mm jack																											
Audio Output	Audio Left/Right (RCA)																											
Internal Speaker	2x10 W RMS																											
External Control	RJ45, RS232C (in/out) 2.5 mm jack, IR (in/out) 3.5 mm jack																											
Extra Connections	USB,			OPS		micro SD, 1xUSB 2.0, 1xUSB 3.0			micro SD, 2xUSB 2.0, 1xUSB 3.0, 1xUSB/2A, OPS									USB, OPS			AC-out, USB, OPS		AC out, OPS		AC out, OPS, RJ45 2-port hub		OPS	
Dimensions (WxHxD)	726.5x425.4x63.6 mm (T/L/R) 11.9 mm / (B) 17.2 mm	968.2x559.4x60.9 mm (T/L/R) 11.9 mm / (B) 14.7 mm	1123.6x646.7x69.2 mm (T/L/R) 11.8 mm / (B) 14.3 mm	1239.2x711.6x61.7 mm (T/L/R) 12.9 mm / (B) 14.7 mm	1458.7x834.7x81.6 mm (T/L/R) 13.9 mm / (B) 14.9 mm	1123.6x646.7x67.8 mm (T/L/R) 11.8 mm / (B) 14.3 mm	1239.2x711.6x61.7 mm (T/L/R) 12.9 mm / (B) 14.7 mm	1458.7x834.7x81.6 mm (T/L/R) 13.9 mm / (B) 14.9 mm	1676.6x955.7x3.8 mm (T/L/R/B) 15.2 mm	1927.9x109.89x85.9 mm	1243.2x714x137.9 mm (T/L/R/B) 15.8 mm	1681.2x955.6x142.4 mm	1077.6x607.8x103.8 mm (T/L) 2.35 mm, (R/L) 1.25 mm	1213.4x684.2x107.65 mm (T/L) 2.35 mm, (R/L) 1.2 mm	1211.4x682.2x98.5 mm (Even Bezel)			0.9mm (Even Bezel)										
Bezel Width	0.9mm (Even Bezel)																											
Vesa Mount	*100x100mm, 200x200mm, M4*	400x400 mm, M6		*400x400 mm, 200x200 mm, M6*		400x400 mm, M6			400x400 mm, M6			600x400 mm, M8			400x400, M6		600x400, M8		400x400 mm, M6		400x400 mm		400x400 mm, M6		400x400 mm			
Smart Insert Mount	N/A																											
Weight (in KG)	5.20 kg	8.8 kg	12.75 kg	15.82 kg	26.05 kg	12.8 kg	15.96 kg	24.8 kg	53.3 kg	63.79 kg	35.8 kg	65.5 kg	21.6 kg	26.5 kg	100x100 mm, 100x200 mm		24.35 kg	100x100 mm, 100x200 mm										



B-Line



C-Line



T-Line



\*3 year advanced exchange warranty

Model	50BFL2114	58BFL2114	70BFL2114	75BFL2114	55BDL6052C	65BDL8052C	75BDL8052C	86BDL8052C	10BDL3051T	24BDL4151T	43BDL4051T	55BDL4051T	65BDL3552T	75BDL3552T	86BDL3552T							
Screen Size	126 cm (50")	146 cm (58")	177 cm (70")	189 cm (75")	55"	65"	75"	86"	25.6 cm (10")	59.94 cm (24")	108.0 cm (43")	138.8 cm (55")	65"	75"	86"							
Backlight Type	Direct-Lit LED				EDGE LED				Edge-Lit LED													
Placement	Landscape 18/7				Landscape & Portrait 24/7				Landscape 18/7				Landscape & Portrait 24/7									
Resolution	3840x2160p				3840x2160p				1280 x 800p				1920x1080p									
Panel Technology	VA				IPS				VA				IPS									
Contrast Ratio	5000:1				1000:1				800:1				1000:1									
Dynamic Contrast Ratio	5000:1				500000:1				500,000:1				1100:1									
Response Time	8 ms		9.5 ms		8 ms		8ms		30 ms		3.5 ms		12 ms		8 ms							
Viewing Angles	178/178 degree				178/178 degree				170/170 degree				178/178 degree									
Display Colors	1.07 Billion				1.07 Billion				16.7 Million				1.07 Billion									
Brightness	350 cd/m <sup>2</sup>				380 cd/m <sup>2</sup>				500 cd/m <sup>2</sup>				450 cd/m <sup>2</sup>									
Protective Glass	yes				yes				0.7 mm safety glass				1.5 mm safety glass									
Touch Technology	P-CAP Multitouch				P-CAP Multitouch				Pcap 5 touch points				Pcap 10 touch points									
Touch Points	10				10				5				10									
Power Consumption (EPA)	TBD				TBD				6 W				25 W									
Video Input	HDMI (x2), USB				HDMI (x2), USB				HDMI (x2), USB				HDMI (x3), USB									
Video Output	N/A				DVI, HDMI2.0 x4, DP 1.2, USB-C				HDMI				via DVI)									
Audio Input	N/A				DVI, DP, HDMI				3.5mm jack Mic input				DisplayPort, DVI-I, VGA (via DVI-D)									
Audio Output	3.5 mm jack headphone out stereo, 3.5 mm jack mono pre-amp (1.5W 80hm)				Jack 3.5mm				3.5mm jack stereo				Audio Left/Right (RCA), 3.5 mm jack									
Internal Speaker	2x 10W RMS				Jack 3.5mm				2x2 W RMS				2 x 10 W RMS									
External Control	RJ45 (JEDI/JAPIT), RJ48 (Serial Xpress + IR in/out), Crestron/Extron/Neets compatible over IP				2 x 20 W				RJ45 (PoE)				RJ45 (PoE+)									
Extra Connections	1x RF DVB C/T/T2, CI Slot, 1xUSB 2.0, 1xUSB 3.0, 12V DC out (1.5A)				OPS, USB 3.0, USB 2.0				USB 3.0, USB 2.0				2xUSB, Micro SD, mPCIe slot									
Dimensions (WxHxD)	1128x655x81/86 mm (T/L/R) 14.9 mm / (B) 22.0 mm	1302 x 760 x 81/86 mm (T/L/R) 14.9 mm / (B) 22.0 mm	1584 x 888 x 66/88 mm (T/L/R) 15.7 mm / (B) 22.7 mm	1683 x 966 x 94 mm (T/L/R) 15.2 mm / (B) 20.0 mm	1264.4x735.2x96.8mm	1979.1x860.1x101.2mm	1703.8x982x99.7 mm	1949x1120x93.0 mm	261x167.2x29 mm (L/R) 19.77 mm / (B/T) 13.56 mm	566.5x361.1x49.2 mm (T) 30.8 mm / (L/R) 22.6 mm / (B) 33.9 mm	1002.6x590.8x91.4 mm (T/L/R/B) 29.2 mm	1271.0x741.8x91.4 mm (T/L/R/B) 29.2 mm	1494.30x869.40x106.80 mm	1715.50x993.70 x108.70 mm (T/L/R/B) 16.3 mm	1961.00mmx1132.30x180.40 mm							
Bezel Width	(T/R/L/B) 1.5 mm																					
Vesa Mount	200x200 mm, M6	400x300 mm, M6	400x200 mm, M8	600x400 mm, M8	400x400, M8				600x400, M8				75x75 mm, M4		100x100 mm, M4		400x400 mm, M6		400x400, M8		600x400, M8	
Smart Insert Mount	N/A																					
Weight (in KG)	TBD				TBD				46.3 kg				69.2 kg				78.2 kg					
	0.71 kg		4.0 kg		19.4 kg		31 kg		100x100 mm, 100x200 mm		TBD											



## D-Line

\*3 year advanced exchange warranty

Model	32BDL4031D	43BDL4031D	49BDL4031D	55BDL4031D	32BDL4051D	43BDL4051D	49BDL4051D	55BDL4051D	49BDL4150D	55BDL4150D	65BDL4150D	75BDL4150D	86BDL4150D	98BDL4150D		
Screen Size	80 cm (32")	108 cm (43")	123.2 cm (49")	138.7 cm (55")	80 cm (32")	108 cm (43")	123.2 cm (49")	138.7 cm (55")	123.2 cm (49")	138.7 cm (55")	163.91 cm (65")	189.3 cm (75")	217.4 cm (86")	247.7 cm (98")		
Backlight Type	Direct-Lit LED		Edge-lit LED		Direct-Lit LED				Edge-Lit LED							
Placement	Landscape (24/7) & Portrait (24/7)															
Resolution	1920x1080p								3840x2160p							
Panel Technology	IPS															
Contrast Ratio	1100:1								1200:1				1300:1			
Dynamic Contrast Ratio	500,000:1															
Response Time	8 ms	12 ms			10 ms	12 ms			8 ms			6 ms		8 ms		
Viewing Angles	178/178 degree															
Display Colors	16.7 Million								1.07 Billion							
Brightness	400 cd/m <sup>2</sup>	450 cd/m <sup>2</sup>			400 cd/m <sup>2</sup>	450 cd/m <sup>2</sup>			500 cd/m <sup>2</sup>							
Power Consumption (EPA)	110 W (max)	65 W	75 W	85 W	60 W	65 W	75 W	85 W	135 W		150 W	99 W	183 W	220 W (typ)	372 W	
Video Input	DisplayPort 1.2 x 1, DVI-I x 1, HDMI (x 2)								DVI-D, VGA (Analogue D-Sub), DisplayPort (1.2), HDMI 2.0 (x 3)				DisplayPort, DVI-D, HDMI (x3), VGA (Analogue D-Sub)			
Video Output	DisplayPort 1.2 x 1, DVI-I x 1								DisplayPort 1.2 x 1				DisplayPort			
Audio Input									3.5 mm jack							
Audio Output									3.5 mm jack				SPDIF, 3.5 mm jack, External speaker connection			
Internal Speaker													Audio Left/Right (3.5 mm jack), External speaker connector, SPDIF out			
External Control									2x10 W RMS							
Extra Connections	N/A								RJ45, RS232C (in/out) 2.5 mm jack, IR (in/out) 3.5 mm jack				mPCIe slot, micro SD, micro USB, USB 3.0, USB 2.0, mPCIe			
Dimensions (WxHxD)	724.8x424.3x 64.1 mm	965.0x559.3x45.5 mm	1097.6x633.9x45.5 mm	1233.4x710.3x45.5 mm	724.8x424.3x 64.1 mm	965.0x559.3x45.5 mm	1097.6x633.9x45.5 mm	1233.4x710.3x45.5 mm	1104.2x637x65.4 (wall mount) / 69.6 (handle) mm	1240.0x713.4x64.4 (wall mount) / 69.6 (handle) mm	1452.0x833.1x63.5 mm	1676.6x955.0x62.8 mm	1927.9x1098.9x85.9 mm	2193.2x1248.2x88.3 mm		
Bezel Width	(T/L/R) 10.8 mm, (B) 15.7 mm	(T/L/R) 9.6 mm, (B) 15.7 mm			(T/L/R) 10.8 mm, (B) 15.7 mm	(T/L/R) 9.6 mm, (B) 15.7 mm			(T) 12.2 mm, (R/L) 12.7 mm; (B) 15.8 mm		(T/L/R) 9.5 mm/(B) 15.6 mm	(T/L/R/B) 15.2 mm		(T/L/R/B) 16.0 mm		
Vesa Mount	200x200 mm, M6		400x400 mm, M6			200x200 mm, M6		400x400 mm, M6								
Smart Insert Mount									N/A				100x100 mm, 100x200 mm		100x200 mm	
Weight (in KG)	6.15 kg	10.41 kg	14.8 kg	18 kg	6.15 kg	10.41 kg	14.8 kg	18 kg	20.9 kg	25 kg	36.5 kg	55 kg	63.8 kg	91.4 kg		



## P-Line



\*3 year advanced exchange warranty

Model	42BDL5055P	42BDL5057P	49BDL5055P	49BDL5057P	55BDL5055P	55BDL5057P
Screen Size	106.5 cm (42")		123.2 cm (55")		138.8 cm (55")	
Backlight Type	E-LED					
Placement	Landscape (24/7), Portrait (24/7)					
Resolution	1920x1080p					
Panel Technology	IPS					
Contrast Ratio	1300:1					
Dynamic Contrast Ratio	500,000:1					
Response Time	8 ms					
Viewing Angles	178/178 degree (H/V)					
Display Colors	1.07 Billion					
Brightness	500 cd/m <sup>2</sup>	700 cd/m <sup>2</sup>	500 cd/m <sup>2</sup>	700 cd/m <sup>2</sup>	500 cd/m <sup>2</sup>	700 cd/m <sup>2</sup>
Protective Glass						
Touch Technology						
Touch Points						
Power Consumption (EPA)	71 W	83 W	82 W	100 W	91 W	96 W
Video Input	DisplayPort, DVI-I, HDMI (x2), VGA (via DVI)					
Video Output	DisplayPort, DVI-I, VGA (via DVI)					
Audio Input	Audio Left/Right (3.5 mm jack)					
Audio Output	Audio Left/Right (3.5 mm jack)					
Internal Speaker	2x10 W RMS					
External Control	RJ45, RS232C (in/out) 2.5 mm jack, IR (in/out) 3.5 mm jack					
Extra Connections	Micro SD, Micro USB, mPCIe, USB/2A, OPS					
Dimensions (WxHxD)	946.94x540.96x56.8 mm		1092.8x623.0x56.8 mm		1228.6x699.4x56.8 mm	
Bezel Width	(T/L/R/B) 6.5 mm					
Vesa Mount	200x200 mm, M6		N/A		400x400 mm, M6	
Smart Insert Mount			N/A		100x100 mm, 100x200 mm	
Weight (in KG)	15.5 kg		19 kg		25.2 kg	