

Less effort, more results

String floss can be messy, awkward and difficult to use correctly. Philips Sonicare Power Flosser is designed to be effective and easy to use. Ideal for implants and braces too.



Removes up to **99.9% of plaque** in treated areas¹



Up to **180% more effective** than string floss at improving gum health²



Learn more at
sonicare.com/powerflosser



¹ in an in-vitro study, actual in-mouth results may vary

² when used with the Quad Stream nozzle on setting 8 with a manual toothbrush in patients with moderate to severe gingivitis vs. using manual toothbrush with string floss

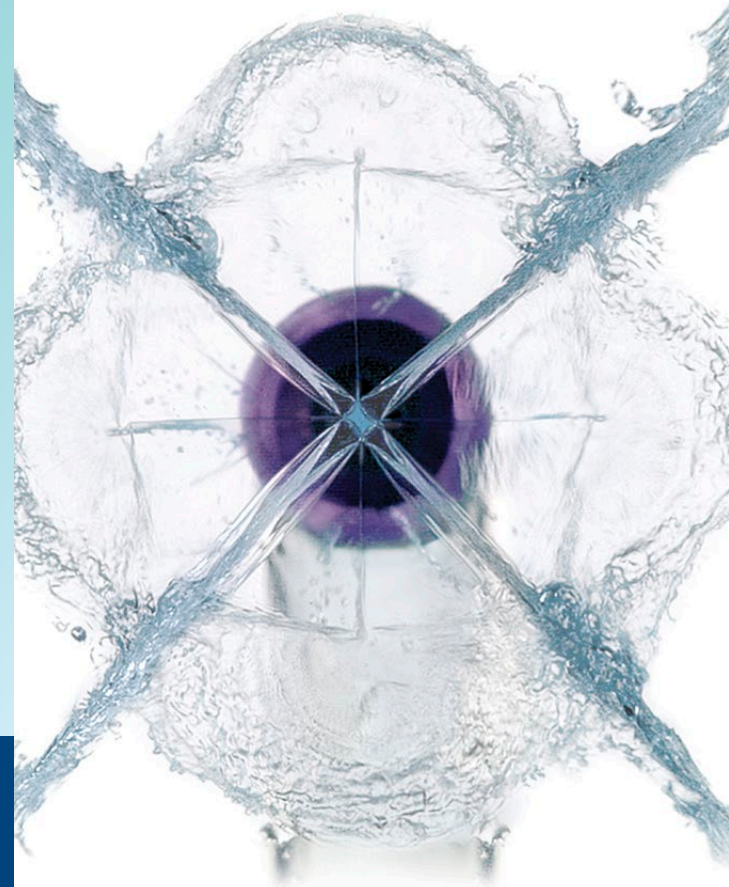
©2020 Koninklijke Philips N.V. All rights reserved. Specifications are subject to change without notice. Trademarks are the property of Koninklijke Philips N.V. (Royal Philips) or their respective owners.

www.philips.com XXXXXXXX 033020

PHILIPS

sonicare

Power Flosser



The power of X

Philips Sonicare Power Flosser effortlessly cleans away plaque between teeth and along the gumline for a healthier mouth.

Designed for a thorough clean, effortlessly

Choose from two flossing modes:

Clean: standard water pressure for a great clean

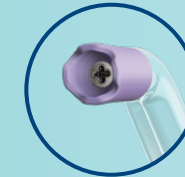
Deep Clean: strong and gentle pulses of water for a thorough clean



10 intensity settings to adjust the flossing pressure for personalized cleaning



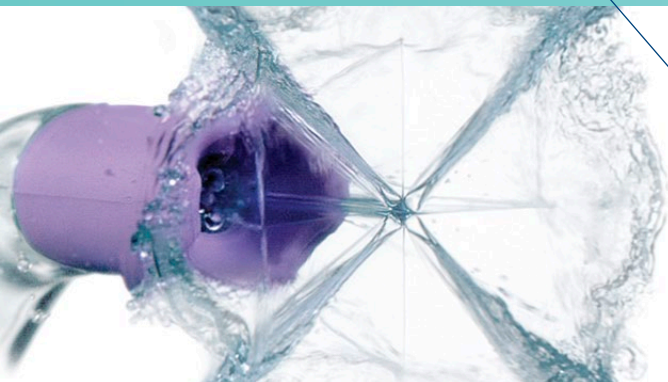
Choose from two nozzles:



Quad Stream nozzle directs water in a cross-shaped stream for thorough, yet gentle cleaning



Standard nozzle for power cleaning between teeth to remove plaque and debris



Quad Stream

Unique cross-shaped nozzle creates four wide streams for a thorough clean between teeth and along the gum line.



Pulse Wave technology

Brief pauses in the cleaning pulsations prompt you to glide the nozzle to the next space between teeth to ensure a whole-mouth clean.