

PHILIPS

Automotive



Discover our **LED** innovations





LED retrofit lighting



Discover a new track

Which LED lamp do you need?

The next level of white light



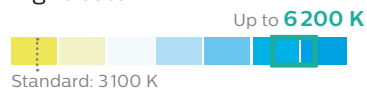
Ultinon LED



Beam performance



Light color



Lifetime



Available in

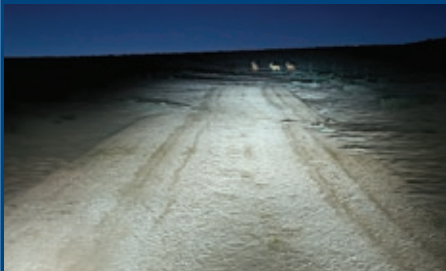
LED-HL [≈H4], [≈H7]

LED-FOG [≈H8/H11/H16]

Brighter. Whiter. Stronger.



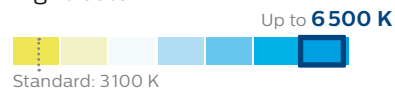
X-tremeUltinon LED



Beam performance



Light color



Lifetime



Available in

LED-HL [≈H4], [≈H7], [≈HB3/HB4], [H1]**, [H11]**, [HIR2]**

LED-FOG [≈H8/H11/H16]

New

Original automotive performance in LED



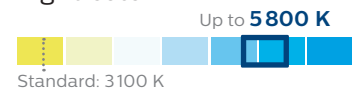
X-tremeUltinon LED gen2



Beam performance



Light color



Lifetime



Available in

LED-HL [≈H4], [≈H7]

LED-FOG [≈H8/H11/H16]

Images for illustration purposes only.

* Compared to the minimum legal standard for halogen bulbs

** Coming soon



It is your own responsibility to ensure that the use of the LED retrofit lights complies with applicable local legal requirements.

Which LED for which function?



Headlights	Front position/ parking lights	Front fog lights	Front indicators	Dashboard lights	Interior lights

X-tremeUltinon LED – Original automotive performance in LED

LED-HL [≈H4] 5800K	LED-HL [≈HB3/HB4] 6500K	LED-T10 [≈W5W] 6000K	LED-FOG [≈H8/H11/H16] 5800K	LED-AMBER [≈PY21W] CAN bus* AMBER	LED-T10 [≈W5W] 4000K	LED-T10 [≈W5W] 6000K	LED-T10 [≈W5W] 4000K	LED-T10 [≈W5W] 6000K
LED-HL [≈H7] 5800K	LED-T20-WHITE [≈W21/5W] WHITE	LED-AMBER [≈WY21W] CAN bus* AMBER	LED-Fest 30/38/43 mm 4000K	LED-Fest 30/38/43 mm 6000K	LED-Fest 30/38/43 mm 4000K	LED-Fest 30/38/43 mm 6000K	LED-Fest 30/38/43 mm 4000K	LED-Fest 30/38/43 mm 6000K

Ultinon LED – The next level of white light

LED-HL [≈H4] 6200K	LED-T10 [≈W5W] 6000K	LED-FOG [≈H8/H11/H16] 6200K	LED-AMBER [≈PY21W] CAN bus* AMBER	LED-T10 [≈W5W] 4000K	LED-T10 [≈W5W] 6000K	LED-T10 [≈W5W] 4000K	LED-T10 [≈W5W] 6000K
LED-HL [≈H7] 6200K	LED-AMBER [≈WY21W] CAN bus* AMBER	LED-Fest 30/38/43 mm 6000K	LED-Fest 30/38/43 mm 6000K	LED-Fest 30/38/43 mm 6000K	LED-Fest 30/38/43 mm 6000K	LED-Fest 30/38/43 mm 6000K	LED-Fest 30/38/43 mm 6000K

CANbus adapter for optimal control

CANbus LED-HL [≈H4]	CANbus LED-HL [≈H7]	CANbus 5W	CANbus LED-FOG [≈H8/H11/H16]	Smart CANbus 21W	CANbus 5W	CANbus 5W





Glove compartment lights	Rear position/parking lights	Rear indicators	Rear fog lights	Trunk lights	License plate lights	3rd stop light	Stop lights	Reversing light

X-tremeUltinon LED – Original automotive performance in LED

 LED-T10 [≈W5W]	 LED-T10 [≈W5W]	 LED-AMBER [≈PY21W]	 LED-RED [≈P21W]	 LED-T10 [≈W5W]	 LED-T10 [≈W5W]	 LED-RED [≈P21W]	 LED-RED [≈P21W], [≈P21/5W]	 LED-WHITE [≈P21W]
 LED-Fest 30/38/43 mm	 LED-(T20-)RED [≈P21/5W], [≈W21/5W]	 LED-AMBER [≈WY21W]	 LED-T20-RED [≈W21W]	 LED-Fest 30/38/43 mm	 LED-Fest 30/38/43 mm	 LED-T20-RED [≈W21W]	 LED-T20-RED [≈W21W], [≈W21/5W]	 LED-T16-, T20-WHITE [≈W16W], [≈W21W]

Ultinon LED – The next level of white light

 LED-T10 [≈W5W]	 LED-RED [≈P21/5W]	 LED-AMBER [≈PY21W]	 LED-RED [≈P21W]	 LED-T10 [≈W5W]	 LED-T10 [≈W5W]	 LED-RED [≈P21W]	 LED-RED [≈P21W], [≈P21/5W]	 LED-WHITE [≈P21W]
 LED-Fest 30/38/43 mm	 LED-T20-RED [≈W21/5W]	 LED-AMBER [≈WY21W]	 LED-T20-RED [≈W21W]	 LED-Fest 30/38/43 mm	 LED-T20-RED [≈W21W]	 LED-T20-RED [≈W21W], [≈W21/5W]	 LED-T20-WHITE [≈W21W]	

CANbus adapter for optimal control

 CANbus 5W	 CANbus 5W	 Smart CANbus 21W	 CANbus 21W	 CANbus 5W	 CANbus 5W	 CANbus 21W	 CANbus 21W	 CANbus 21W
---------------	---------------	----------------------	----------------	---------------	---------------	----------------	----------------	----------------

*LED CANbus adapter 21W included in the pack



It is your own responsibility to ensure that the use of the LED retrofit lights complies with applicable local legal requirements.

The exciting new Philips X-tremeUltinon LED gen2 range performs at automotive OEM level.



X-tremeUltinon LED gen2

Original automotive performance in LED



IP65

Dust tight and water resistant



EMI proof

Resistant to **electromagnetic interference**



UV block

No UV emission, hence not harmful to headlight units

Original automotive performance

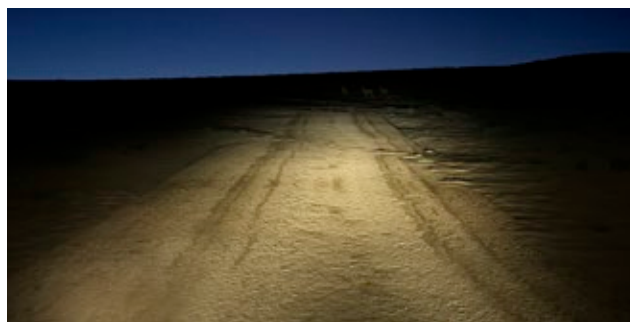
The exciting new Philips X-tremeUltinon LED gen2 range pushes the boundaries of light once again, performing at automotive OEM level. Equipped with exclusive Lumileds LUXEON Altilon LED chips, otherwise only available to carmakers, these lights have optimized consistency, performance up to +250% brighter and a cool white light color to provide sharper visibility.

Best performance with up to +250% brighter light*

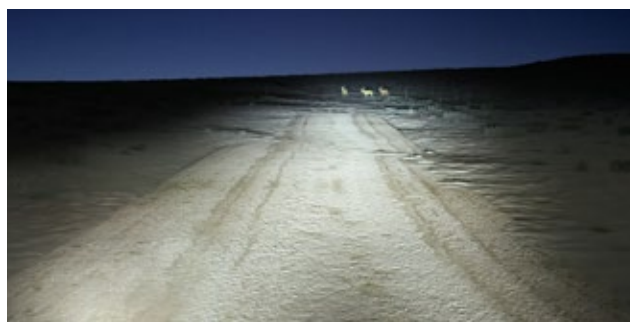


With an intense bright beam providing uniform light distribution, Philips X-tremeUltinon LED gen2 headlamps improve visibility and enhance contrast, giving drivers up to +250% brighter light*. That means more time to react to events in front of them. Put simply, drivers get an optimal spectrum for superior visibility and better anticipation. Philips X-tremeUltinon LED gen2 bulbs make the driving experience more enjoyable due to their superior beam performance.

Standard halogen



Philips X-tremeUltinon LED gen2



Light color

The new color temperature of up to **5800 Kelvin cool white** conforms to **OEM standards** by meeting Automotive LED ECE and SAE color specifications, optimized for **visibility and comfort**. Drivers enjoy an instant style upgrade with a crisp, cool white and modern high-end look.



Up to **5800 K** – the OEM reference
X-tremeUltinon LED gen2



Images and graphs for illustration purposes only.

* Compared to the minimum legal standard for halogen bulbs



It is your own responsibility to ensure that the use of the LED retrofit lights complies with applicable local legal requirements.

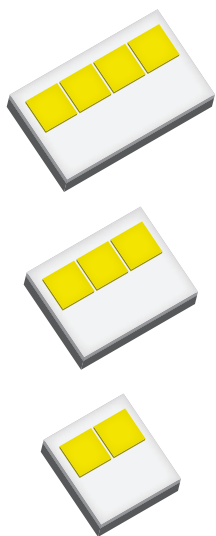
Powered by LUXEON Altilon SMD LEDs

(Surface Mounted Device)

Philips X-tremeUltinon LED gen2 headlight bulbs feature Lumileds LUXEON Altilon SMD chips. **Specifically developed for OEM front lighting** (low beam, high beam, fog and curved lighting), LUXEON Altilon SMD LEDs provide **long lifetime and high reliability** that have been proven under stringent automotive testing conditions.



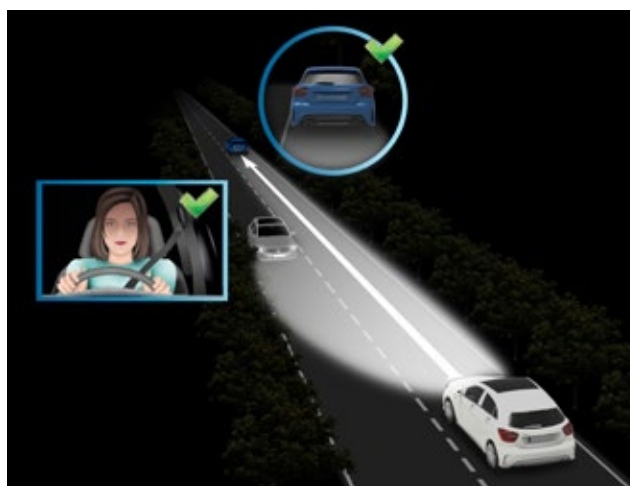
Projecting a wider angle and perfectly positioned light, these headlight bulbs prevent glare and produce a **superior cut-off line**. With higher electrical current capability, they offer increased flux performance. Thanks to their optimal hot lumen ratio, the Philips X-tremeUltinon gen2 lights feature longer-term stability as well as improved thermal resistance and low power consumption. They also provide a **superior homogeneity in color and beam intensity**.



LED headlight from the market



Philips SafeBeam technology



Superior lifetime

Thanks to their **innovative heat-management technology**, Philips X-tremeUltinon LED gen2 headlights have a remarkable lifetime of up to **12 years**. We also provide a 5-year warranty. As most cars are replaced or upgraded within that time, these lights should last the lifetime of your vehicle.



State-of-the-art LED technology for smarter light

The unique LUXEON Altilon LED chips provide **industry-leading thermal performance** so they can operate effectively at higher temperatures. At the same time, LED lights generate heat that needs controlling.



Passive cooling system with constant air flow, used in Philips X-tremeUltinon LED-HL [≈H4] and LED-FOG [≈H8/H11/H16].

The unique **Philips AirFlux** and **AirCool** technologies are smart heat-management systems that direct heat away from the light's critical components, preventing damage.

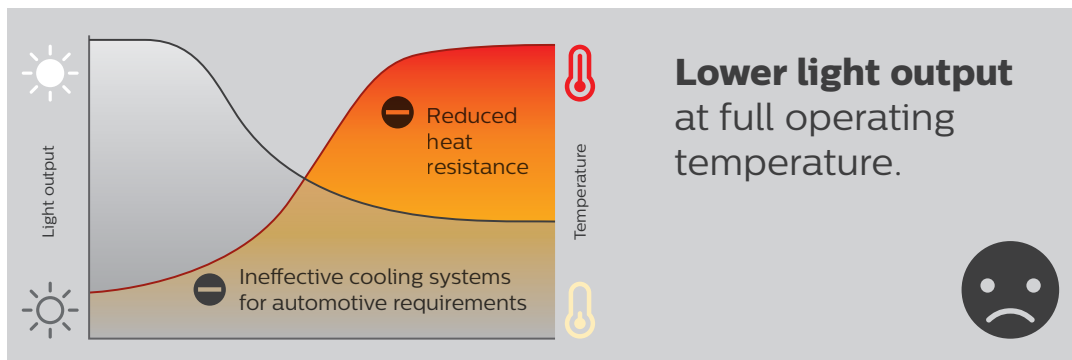


Active fan-based cooling system, used in Philips X-tremeUltinon LED-HL [≈H7].

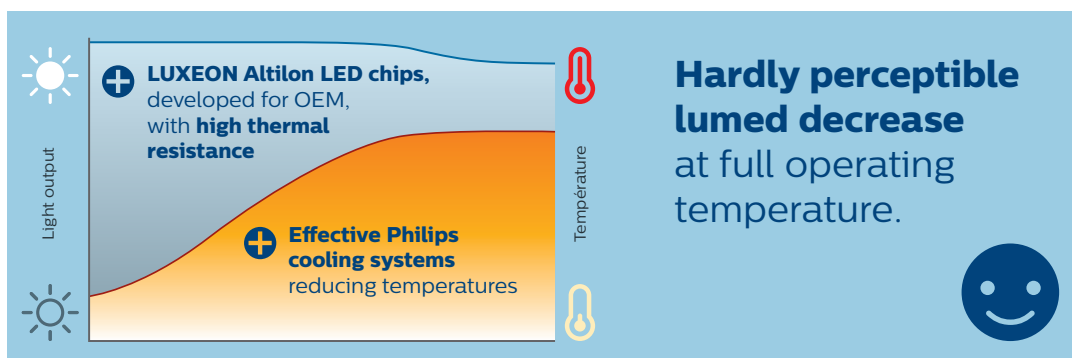
Hot lumen

Both the LED thermal resistance and heat-management systems allow for a **stable hot lumen**. Hot lumen refers to the light output of an LED when it is at its highest temperature. As temperature rises, the brightness of competitor headlight bulbs tends to decrease significantly while the difference in Philips X-tremeUltinon gen2 is hardly perceptible.

LED headlight from the market



Philips LED headlight



It is your own responsibility to ensure that the use of the LED retrofit lights complies with applicable local legal requirements.

X-tremeUltinon LED gen2



LED-HL
[≈H4]

5800 K



LED-HL
[≈H7]

5800 K



LED-FOG
[≈H8/H11/H16]

5800 K



LED-WHITE
[≈P21W]

WHITE



LED-T20-WHITE
[≈W21W]

WHITE



LED-T20-WHITE
[≈W21/5W]

WHITE



LED-T16-WHITE
[≈W16W]

WHITE



LED-RED
[≈P21W]

RED



LED-RED
[≈P21/5W]

RED



LED-RED
[≈W21W]

RED



LED-RED
[≈W21/5W]

RED



LED-AMBER
[≈PY21W]



AMBER



LED-AMBER
[≈WY21W]

AMBER

Ordering information

Product	EAN1	EAN3	GOC	Order entry	MOQ
X-tremeUltinon LED gen2 headlighting					
 X-tremeUltinon LED gen2 LED-HL [≈H4]	8719018060129	8719018060136	06012931	11342XUWX2	6
 X-tremeUltinon LED gen2 LED-HL [≈H7]	8719018060143	8719018060150	06014331	11972XUWX2	6
 X-tremeUltinon LED gen2 LED-FOG [≈H8/H11/H16]	8719018060167	8719018060174	06016731	11366XUWX2	6
X-tremeUltinon LED gen2 signaling					
 X-tremeUltinon LED gen2 LED-WHITE [≈P21W]	8719018051455	8719018051486	05145530	11498XUWX2	10
 X-tremeUltinon LED gen2 LED-T20-WHITE [≈W21W]	8719018051462	8719018051479	05146230	11065XUWX2	10
 X-tremeUltinon LED gen2 LED-T20-WHITE [≈W21/5W]	8719018051493	8719018051509	05149330	11066XUWX2	10
 X-tremeUltinon LED gen2 LED-T16-WHITE [≈W16W]	8719018051844	8719018051851	05184430	11067XUWX2	10
 X-tremeUltinon LED gen2 LED-RED [≈P21W]	8719018051578	8719018051585	05157830	11498XURX2	10
 X-tremeUltinon LED gen2 LED-RED [≈P21/5W]	8719018051516	8719018051523	05151630	11499XURX2	10
 X-tremeUltinon LED gen2 LED-T20-RED [≈W21W]	8719018051530	8719018051547	05153030	11065XURX2	10
 X-tremeUltinon LED gen2 LED-T20-RED [≈W21/5W]	8719018051554	8719018051561	05155430	11066XURX2	10
 X-tremeUltinon LED gen2 LED-AMBER [≈PY21W]	8719018051592	8719018051608	05159230	11498XUAXM	10
 X-tremeUltinon LED gen2 LED-AMBER [≈WY21W]	8719018051615	8719018051622	05161530	11065XUAXM	10

Installing LED retrofit headlights can get complicated:
Philips connector rings ensure a better fit for your
peace of mind.



Connector rings for LED-HL



A better fit for LED retrofit bulbs

Easy to fit

LED-HL [≈H7] headlights feature a wide variety of lamp brackets, making installation complicated. Philips LED connector rings ensure your bulbs **fit the widest range of car models**, giving you peace of mind and great lighting performance.

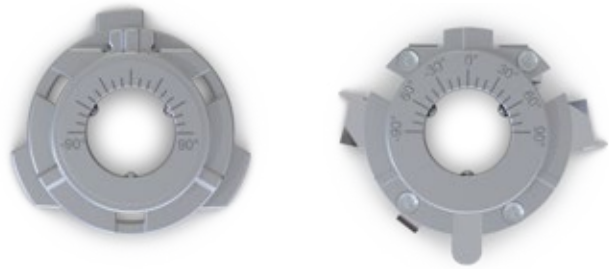
We provide a variety of robust exchangeable Philips connector rings to **improve the fit in most vehicle models and make installation easier**.

Compatible with major car models

To achieve a good fit in a wide range of car models, two model-specific connector rings are available for Philips LED-HL [≈H7].

Easy installation

Both connector ring types have an integrated protractor to make sure that they are installed at the right angle and correctly oriented.



Reliable Philips quality

As optional accessories for **Philips advanced automotive lighting systems**, the type B and C LED connector rings are **top-quality products**. They are made of durable metal, can handle high temperatures and provide **long-lasting performance**. Tested in the toughest conditions, they are proven to withstand physical and thermal stress.

Connector ring type B

Type B is compatible with all Philips LED retrofit ranges.



Connector ring type C

Type C is compatible with Philips Ultinon LED and Philips X-tremeUltinon LED gen2 headlights.



Ordering information

Product	EAN1	EAN3	GOC	Order entry	MOQ
Connector ring type B	8719018051219	8719018051226	05121930	11172BX2	10
Connector ring type C	8719018051233	8719018051240	05123330	11172CX2	10

philips.com/automotiveLED



It is your own responsibility to ensure that the use of the LED retrofit lights complies with applicable local legal requirements.

Some car models present particular challenges for LED-based retrofit lamps. Philips' unique CANbus adapters ensure the vehicle's lighting systems function smoothly.



LED CANbus adapters for LED-HL



Reliable electrical performance

Compatibility assured

Easy to install, these adapters ensure compatibility with your car's electrical systems, **preventing potential problems** with dashboard warnings, flickering headlamps and high-beam indicators*.

Superior electrical performance

The Philips CANbus adapter lets you **ensure the constant performance** of your LED retrofit headlamps and enjoy a **better electrical fit with your car**.

Easy installation

Thanks to its **unique, advanced design**, the Philips CANbus adapter is easy to install and provides superior performance from day one.

Waterproof connectors

Type-specific adapters are **durable** and provide **IP65 protection** from ingress of dust and water.

Optimal performance in all conditions

Philips' CANbus adapters are **designed to handle the demands of daily driving**.

Automotive grade quality

Technologically advanced, Philips lighting is renowned in the automotive industry and has been for over 100 years. Philips Automotive Grade Quality products are designed and developed following **strict quality-control processes** (including applicable ISO norms), leading to consistently high production standards. Major car manufacturers choose Philips lamps, because when you buy Philips products, you buy quality.



Ordering information

Product	EAN1	EAN3	GOC	Order entry	MOQ
CANbus adapter for LED-HL [≈H4]	8727900398090	8727900398106	39809030	18960C2	10
CANbus adapter for LED-HL [≈H7]	8719018050649	8719018050656	05064930	18952C2	10
CANbus adapter for LED-FOG [≈H8/H11/H16]	8719018050663	8719018050670	05066330	18954C2	10

philips.com/automotiveLED

* High beam dashboard indicator is only valid for LED-HL [≈H4]



It is your own responsibility to ensure that the use of the LED retrofit lights complies with applicable local legal requirements.

