

# AF421 Overview

# Philips AF421 Disposable Mask



EE Leak 1 Elbow  
For use on V60/V680



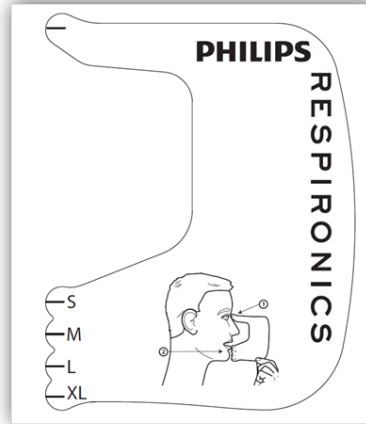
SE Elbow  
For use on Competition



EE Leak 2 Elbow  
No DEP required

# FEATURES

- Innovative bellows style cushion to aid comfort and leak prevention
- Simple, intuitive Talon Clips
- New sizing gauge technique
- Four sizes (S,M,L, XL)
- Zip-lock bag packaging
- Updated headgear with talon clips
- Clean Clip holder included



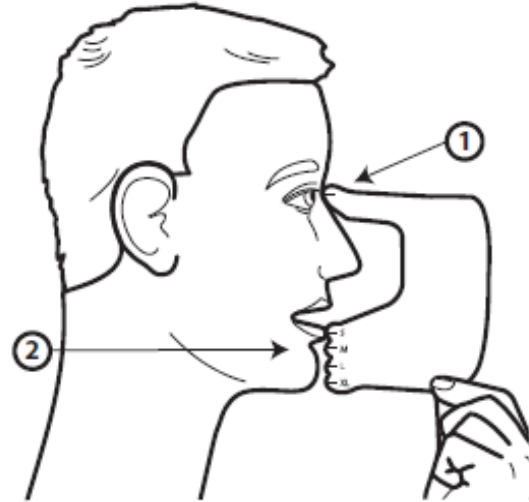
# A few things to note

## Sizing gauge:

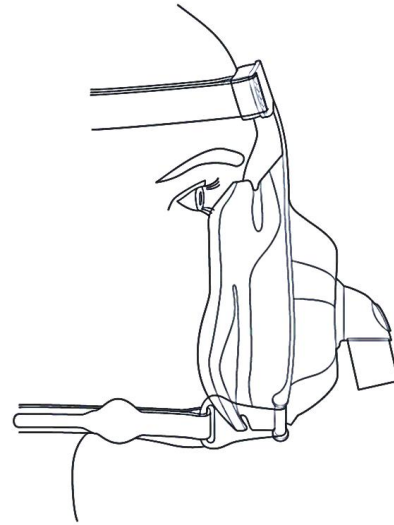
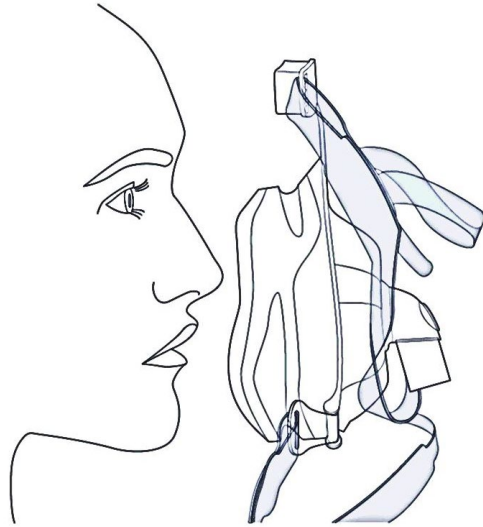
The facial landmarks used for selecting the appropriate size mask

1. Just above the junction of nasal bone and cartilage
2. The area below the lower lip of a slightly open mouth

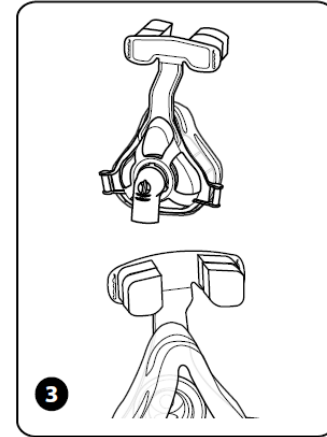
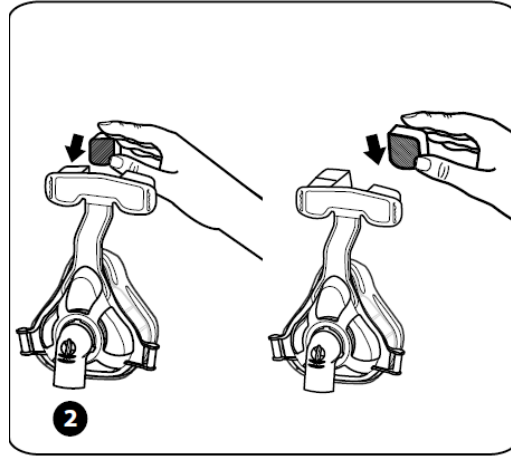
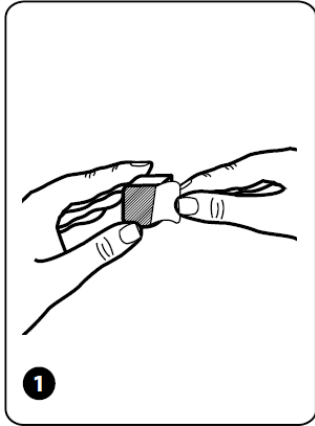
If your patient falls in between two sizes, select the larger one.



# AF421 Fitting



# AF421 Forehead Pad



Internal

