



制 造 商：童音母婴用品（上海）有限公司
地 址：上海市青浦区公园路348号7层7188室
生产企业：镇江艺高儿童用品有限公司
地 址：江苏省镇江市润州工业园区强凌北路
电 话：4000-080-996
邮 箱：philips.avent.babytravel@ibabybell.com
网 址：www.philips.com.cn/babytravel

PHILIPS

AVENT

GAIA (盖亚)

儿童安全座椅 安装使用说明书

组别：0+/I/II/III组（0-36kg）

适合于0-12岁儿童

执行标准：GB 27887-2011



使用前请务必阅读本说明书及产品上的警告标语

目录

| | |
|---------------------|----|
| 使用注意事项 | 02 |
| 警告 | 05 |
| 使用说明 | 07 |
| 安装模式选择 | 08 |
| 部件名称 | 10 |
| 安装汽车正确位置 | 12 |
| 安装须知 | 15 |
| 安全座椅调整 | 16 |
| 安全带调整及固定宝宝 | 17 |
| 肩带调节 | 18 |
| 安全扣使用 | 18 |
| 座椅安装 | 19 |
| 附件配置图 | 21 |
| 后向0+I组安装方法 | 21 |
| 前向I组安装方法 | 23 |
| II III 组的安装方法 | 24 |
| 从汽车上拆除座椅 | 27 |
| 布套拆卸 | 28 |
| 使用说明 | 29 |

Philips Avent 和 Philips 盾牌图形是皇家飞利浦有限公司的注册商标，其使用需遵循皇家飞利浦有限公司的许可。

本产品由童音母婴用品（上海）有限公司负责生产和销售，童音母婴用品（上海）有限公司是本产品的担保人。

2021© 童音母婴用品（上海）有限公司保留所有权利。

使用注意事项

亲爱的客户：

此儿童约束系统符合GB 27887-2011标准，适合安装于汽车制造商使用手册中注明符合要求的车辆座椅，并不适用于所有车款，请阅读适用车款列表，查看您的汽车是否在适合于与本产品配套的汽车之列。如您的汽车没有配备ISOFIX，请与汽车制造商联系。

· 这是ISOFIX儿童约束系统。符合GB 27887-2011，用于装有ISOFIX固定装置的车辆。

· 该系统依据儿童约束系统的类别和固定装置的种类，安装在ISOFIX固定的位置（按照车辆手册的描述）。

· 打算安装的ISOFIX儿童约束系统适合的质量组及ISOFIX尺寸类别分别为：后向使用0+I组为：D-ISO/R2、前向使用I组为：B1-ISO/F2X。

· 如有疑问，请咨询儿童约束系统制造商或零售商。

· 只在适用车型配备了通过GB14166或ECER16要求的3点式/带卷收器的安全带情况下才适用。

· 若成人安全带相对与儿童约束系统的主要受力点位置相互干涉，则不可使用。

· 此儿童约束系统符合“受限制类/半通用类”应用，适合安装在下列汽车座椅位置。

| 注意 | | |
|--------|----|-------------|
| 车型 | 前排 | 后排 |
| 见车型适配表 | 否 | 外侧(是) 中间(否) |

其他的汽车座椅位置也可能适合安装此儿童约束系统。如有疑问，请咨询儿童约束系统制造商或零售商。

使用注意事项

· 其他汽车座椅位置也可能适合安装此儿童约束系统，此儿童安全座椅不适合安装在带有活动安全气囊是前排座椅位置。如有疑问：请咨询儿童约束系统的制造商或经销商，此产品仅供成人安装和调节。

本产品严格按照ISO9001:2015质量管理体系标准生产。

本产品通过欧洲法规ECE R44/04认证及中国国家强制性产品3C认证。

| 注意 | | |
|---|----|-------------|
| 1.这是ISOFIX儿童约束系统，符合GB 27887-2011。用于装有ISOFIX固定装置的车辆。 | | |
| 2.该系统依据儿童约束系统的类别和固定装置的种类,安装在ISOFIX固定的位置(按照车辆手册的描述)。 | | |
| 3.打算安装的ISOFIX儿童约束系统适合的质量组及ISOFIX尺寸类别为：后向使用0+1组为D类，前向使用1组为B1类。 | | |
| 车型 | 前排 | 后排 |
| 见车型适配表 | 否 | 外侧(是) 中间(否) |

其他的汽车座椅位置也可能适合安装此儿童约束系统。如有疑问，请咨询儿童约束系统制造商或零售商。

警告

使用注意事项

· 此产品为ISOFIX儿童安全座椅，ISOFIX+支撑腿安装方便，产品360° 旋转，可面向车门方便家长放入宝宝，调整适合宝宝的头枕高度，为宝宝系好安全带，调整好适合的靠背角度。

· 儿童约束系统后向使用的年龄建议使用至4岁（18KG）婴幼儿的骨骼、颈椎较弱，后向使用宝宝是后背向前，相对更能保护婴幼儿。

· 360° 旋转全组别ISOFIX儿童安全座椅可以后向使用至：0+I组使用ISOFIX+支撑腿固定安全座椅，适用婴儿体重：0-18KG年龄约出生至4岁，为ISOFIX儿童约束系统。

· 前向使用：I组使用ISOFIX+支撑腿固定安全座椅，适用幼儿体重：9-18KG年龄约9个月-4岁，为ISOFIX儿童约束系统。

· 前向使用：II、III组使用FIX+汽车三点式汽车安全带固定，适合儿童体重：15-36KG年龄约3-12岁，为半通用类儿童安全座椅。

· 前向使用：II、III组使用汽车三点式汽车安全带固定，适合儿童体重：15-36KG年龄约3-12岁，为通用类儿童安全座椅。

· 请妥善保管好说明书，以便日后参考查阅。

· 对于ISOFIX形式的儿童约束系统，使用前应阅读汽车制造商手册中有关ISOFIX固定点的说明。

- 1.这是“通用类”儿童约束系统,符合GB 27887-2011.作为通用儿童约束系统,适合大多数,而不是全部的汽车座椅。
- 2.如果汽车制造商在使用手册中注明可以让适用此年龄段的“通用类”儿童约束系统配合的话,那么更容易达到正确的匹配。
- 3.如有疑问,请咨询儿童约束系统制造商或零售商。

为了保证您孩子得到更大程度的安全保护，请仔细阅读如下说明：

- 1.任何情况下，都不要将儿童安全座椅安装在有安全气囊的汽车座椅上。
- 2.安装此座椅前请阅读汽车制造商提供的汽车使用手册中，有关ISOFIX和LATCH接口说明进行安装。
- 3.儿童约束系统的安全带不可随意更改或使用其他带子代替，确保儿童约束系统与车辆连接的织带应系紧。约束儿童的织带应根据儿童的身体进行调整。织带不得扭曲，确保依据厂家使用说明书安装。
- 4.带宝宝出行时，务必检查好固定宝宝的肩带和腰带部分，保证腰带能很好地约束宝宝的骨盆部位置。
- 5.儿童约束系统的刚性部分和塑料部件请按照说明书的要求放置和安装，确保儿童约束系统不被车里的活动座椅或车门卡住。
- 6.没有认证许可的产品和经过改装的产品是危险的，并且附近没有制造商提供的安装说明也是很危险的。
- 7.ISOFIX接口，支撑腿是否正确固定并锁紧是非常重要的，所以在带宝宝出行前请务必检查好安全座椅固定情况。
- 8.请不要将儿童在无人照看的情况下放置在约束系统内。
- 9.当汽车停在烈日下，车内温度会升高，建议您不使用儿童安全座椅时，用毛巾将其遮盖，以免灼伤宝宝。
- 10.发生事故时，将婴儿迅速转移至车外是非常重要的，这意味着安全扣必须性能良好，不能堵塞或破坏，所以应注意定时检查安全卡扣。
- 11.每次使用安全座椅时，都应检查安全带，如果松弛或脱落的安全带对宝宝很危险。

警告

- 12.车内的行李或是比较尖锐的坚硬物品要做好绑因，松散的物体在发生意外时可能会伤及他人。
- 13.在不使用安全座椅时，建议您将安全座椅固定好，避免发生事故时被抛出。
- 14.遇到紧急情况时，按安全卡扣上的红色按钮解开安全带将孩子抱出。
- 15.不用安全座椅时，请将它放置在适当位置，不能压盖重物，也不要接触腐蚀性物质。
- 16.儿童安全座椅禁止在没有座椅布套的情况下使用，座椅布套不能使用除制造商推荐的材料以外的其他材料，布套材料影响儿童约束系统总体的性能。
- 17.若您的儿童安全座椅在一次事故中受损，禁止再次使用，必须更换新的安全座椅。
- 18.请不要使用二手的汽车安全座椅，否则会导致危险。
- 19.**警告！**不得使用除说明文件描述的和儿童约束系统上标识的任何其他受力点。

使用说明

- 若有长时间开车的情况，请在途中适当停留，否则儿童很容易疲劳，汽车在行进过程中，请将儿童始终放置在汽车儿童安全座椅中。
- 若孩子将汽车儿童安全座椅的安全带解开了，应立即将车子停在安全的地方，重新系好安全带才可以发动车子。
- 不要让安全卡扣处于半锁定状态。
- 确保儿童安全座椅安全带的松紧及防护垫的位置完全符合说明书的要求。
- 每次使用安全座椅时，请确保汽车安全带收紧和安全座椅安装牢固。
- 不要对座椅做任何修改或添加部件，否则可能会严重影响其安全性和功能。
- 父母应有正确的出行安全观念，并以身作则系好汽车安全带，切勿因儿童哭闹而违背行车安全原则。

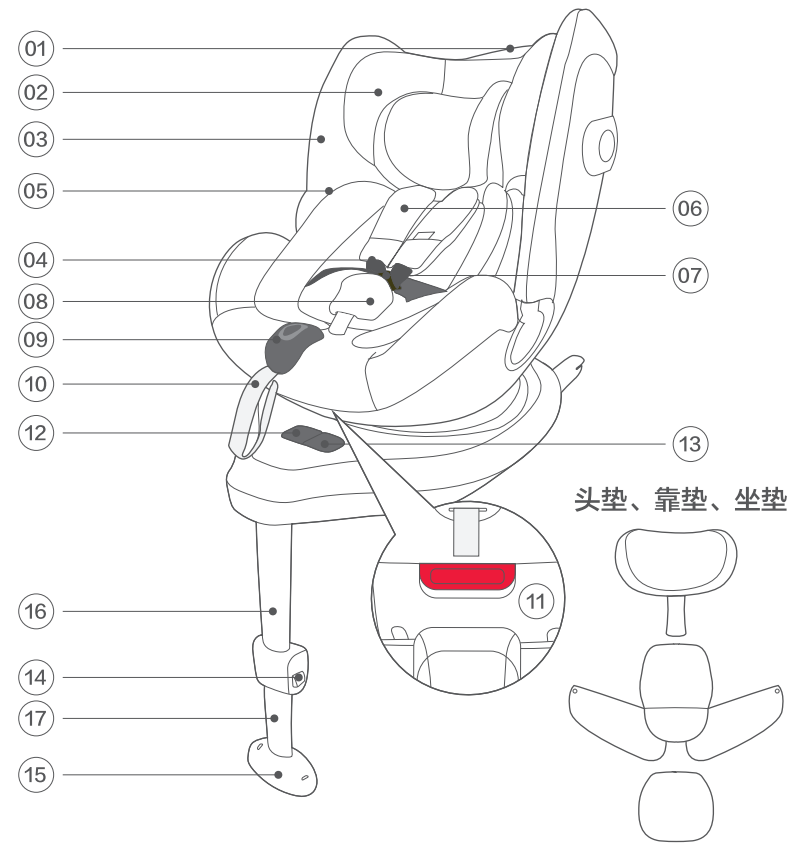
- 1.这是 ISOFIX儿童约束系统。符合GB 27887-2011 用于装有 ISOFIX固定装置的车辆。
- 2.该系统依据儿童约束系统的类别和固定装置的种类，安装在 ISOFIX固定的位置(按照车辆手册的描述)
- 3.打算安装的 ISOFIX儿童约束系统适合的质量组及 ISOFIX尺寸类别：后向使用0+1组为：D，前向使用1组为：B1

安装模式选择

安装模式选择

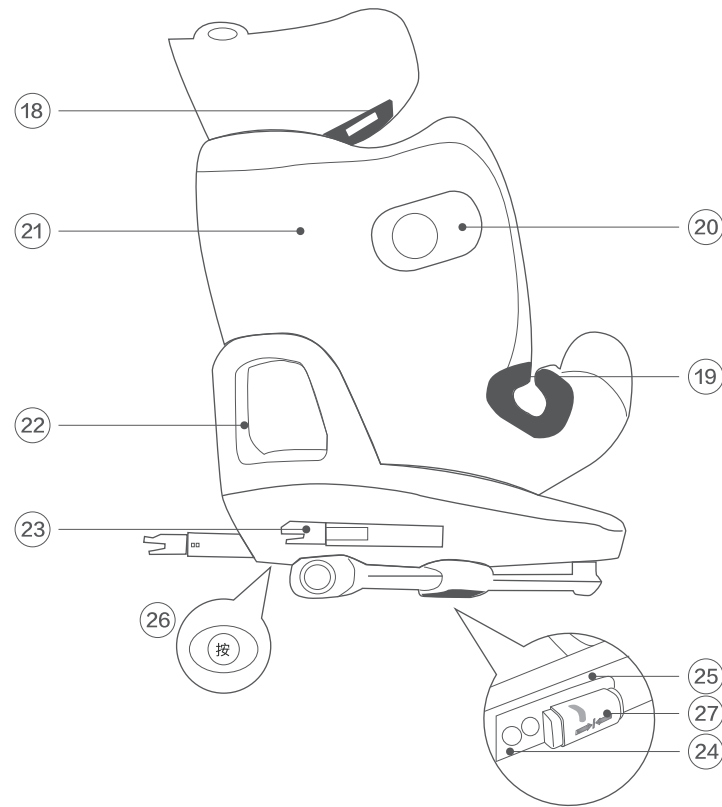
| 体重 | 安装模式 | 安装图示 | 参考年龄 | 座椅档位 | 固定模式 |
|---------|--------|--|----------|---------|--------------------------------|
| 0-18kg | 婴儿模式 |  | 未满 4 岁 | 第 4-6 档 | ISOFIX+ 支撑腿 |
| 9-18kg | 幼儿学步模式 |  | 9 个月-4 岁 | 第 1-3 档 | ISOFIX+ 支撑腿 |
| 15-36kg | 学童模式 |  | 3-12 岁 | 第 1 档 | FIX+3 点汽车 安全带 /3 点 汽车安全带 |

部件名称



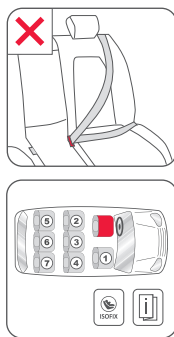
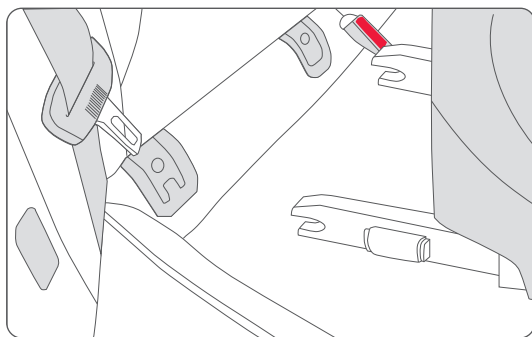
- | | | |
|--------------|--------------|---------------|
| 01 头靠调节把手 | 07 安全锁扣 | 13 ISOFIX伸出按钮 |
| 02 头靠 | 08 护胯套 | 14 支撑腿调节按钮 |
| 03 布套 | 09 安全带调节器 | 15 支撑腿受力指示 |
| 04 肩带(肩部安全带) | 10 调节拉带 | 16 支撑腿(内) |
| 05 靠垫 | 11 靠背角度调节按钮 | 17 支撑腿(外) |
| 06 肩带垫 (X2) | 12 360°度旋转按钮 | |

部件名称



- | | |
|-----------------|---------------|
| 18 上安全带导向槽 (X2) | 23 ISOFIX接口 |
| 19 下安全带导向槽 (X2) | 24 ISOFIX解锁按钮 |
| 20 左右吸能侧保护 | 25 二道锁按钮 |
| 21 靠背壳体 | 26 支撑腿解锁按钮 |
| 22 底座壳体 | 27 FIX状态红绿视窗 |

安装汽车正确位置



此儿童约束系统符合GB27887-2011标准，适合安装于汽车制造商使用手册中注明符合要求的车辆座椅，并不适用于所有车款，请阅读适用车款列表，查看您的汽车是否在适合于与本产品配套的汽车之列。如您的汽车没有配备ISOFIX，请与汽车制造商联系。

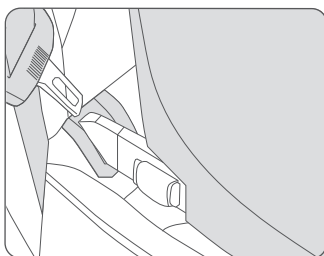
在特殊情况下，儿童安全座椅可安装至汽车前排座椅上，注意事项如下：

检查座椅位是否配备ISOFIX连接系统，如果没有安装ISOFIX连接系统，不可使用本儿童安全座椅。

禁用乘客安全气囊。如果您的汽车无法禁用安全气囊，不可将本汽车座安装在汽车前排座椅上。

请始终遵照汽车制造商的建议。

⚠ 警告！ 在碰撞事故中易造成伤害的行李和物品应被妥善安放。



安装汽车正确位置

⚠ 警告！ 不要让您的孩子在儿童约束系统内处于无人照看的状态，即使是很短的时间。在阳光直射下要用覆盖物(如：浅色布)遮盖住儿童安全座椅。阳光直射会使儿童安全座椅零部件过热从而烫伤小孩皮肤。

⚠ 警告！ 此安全座椅后向使用及前向1组使用为ISOFIX半通用类儿童约束系统，不能使用汽车三点式成人安全带约束。

⚠ 警告！ 严禁将此儿童座椅安装在与汽车内行车方向成直角的侧面座位上。此儿童座椅亦不适用于后向汽车座位上，例如小型客货车或小巴。当座椅在不使用时，亦必须与ISOFIX连接系统固定在座位上，以免汽车在紧急刹停或轻微的碰撞时，因安全座椅不稳固，使你和其它乘客可能受到伤害。

关于汽车内的安全：

⚠ 警告！ 不能安装在带有安全气囊的座椅位置上！

⚠ 警告！ 当遭受剧烈的事故后，约束系统应及时更换！

为保障所有乘客的安全，请确保将汽车内折叠式座椅靠背锁定在直立位置；

当在后排乘客座椅上安装本儿童安全座椅时，请将车座调整至最靠后的位置；

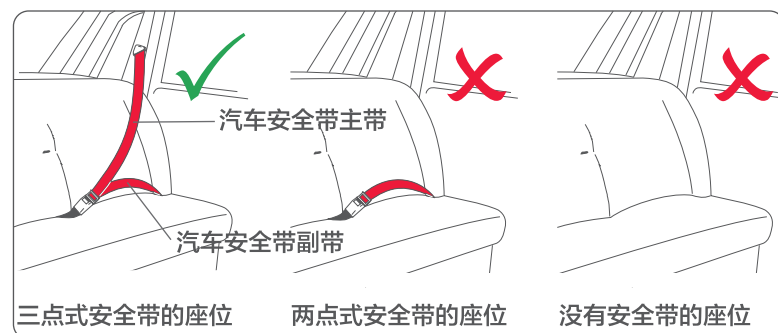
请妥善固定所有可能在事故中造成伤害的物体；

车上的所有乘客必须系好安全带。

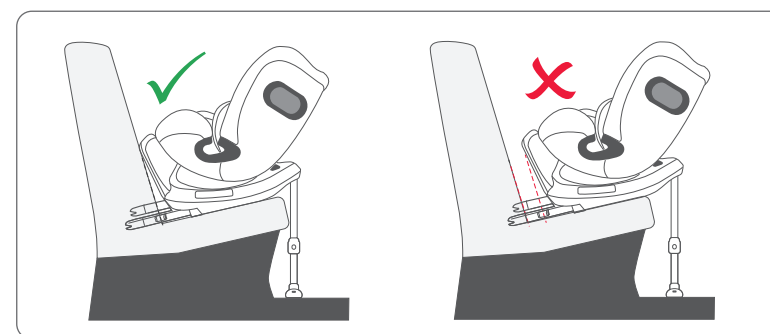
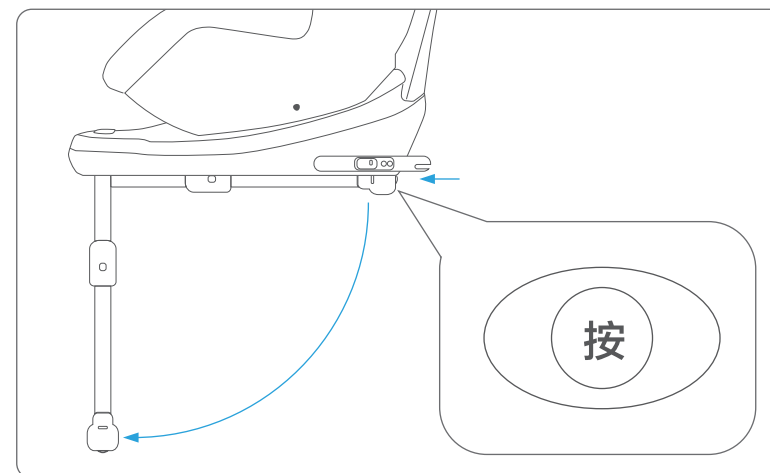
安装汽车正确位置

保护您的汽车

部分汽车的座椅套比较敏感（如：丝绒、皮革等。）可能会引发使用后导致变色等痕迹的情况发生。若要避免，您可将例如毯子、毛巾放在儿童安全座下。在这方面，您可以查阅说明书中“清洁”章节，并请在首次使用儿童安全座椅前遵循。

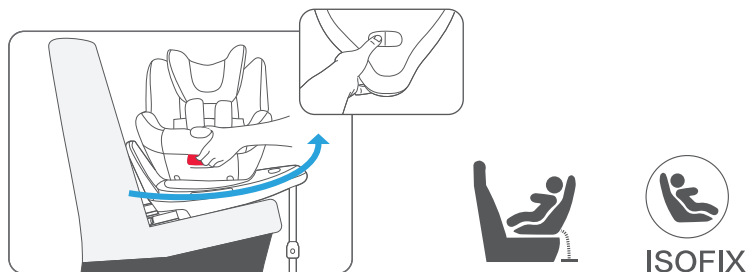


安装须知

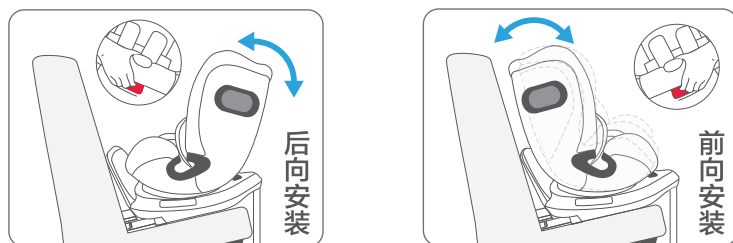


⚠ 重要 在儿童体重未超过 9KG之前，不得前向安装使用（按儿童安全座椅行业共识，我们建议您在后向约束系统能够适合孩子与身体的情况下，请您尽量延长孩子后向使用的时间，请参阅使用说明）

安全座椅调整



1、此儿童安全座椅有360° 旋转功能，任意角度下靠背都有3档角度调节，满足不同舒适度需求，拉起11靠背角度调节把手，同时推或拉动座椅至需要档位，松开11靠背角度把手，再次推或拉动座椅听到咯噔声，检查靠背角度档位是否是需要的角度，不是请重复前面的方式调整。

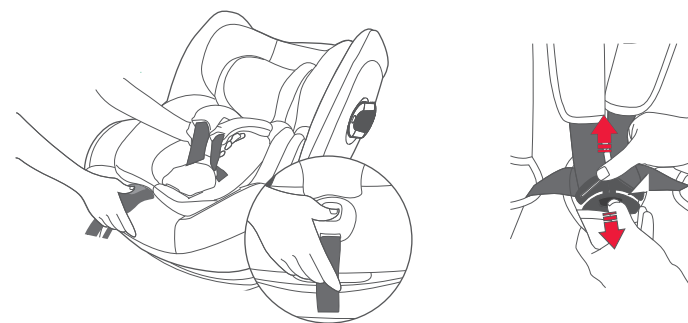


2、此儿童安全座椅不仅提供360° 度旋转功能，以便于让您的孩子容易进出车厢，还可以让您将座椅由前向安装转为后向安装使用。满足不同需求使用。

⚠ 注意！ 根据交通事故统计证实，儿童安全座椅以面向行车方向反向安装会更安全。因此，我们建议尽可能长时间的使用儿童安全座椅后向位置。

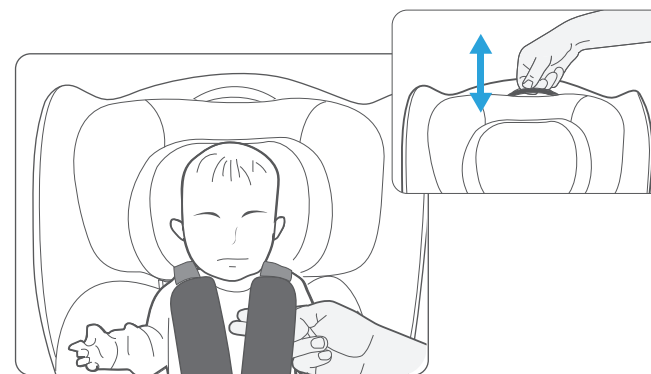
⚠ 重要！ 在儿童体重未超过 9KG 之前，不得前向安装使用（按儿童安全座椅行业共识，我们建议您在后向约束系统能够适合孩子与其身体的情况下，请您尽量延长孩子后向使用的时间，请参阅使用说明）。

安全带调整及固定宝宝



⚠ 注意！ 请确保儿童安全座椅内没有玩具或其它物品。

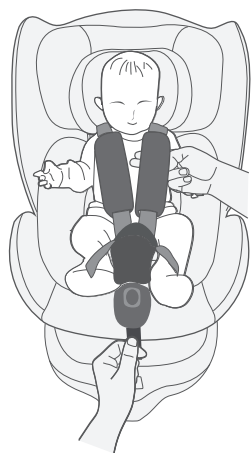
松开肩带：按下9中央调节器按钮，同时向外拉动4两根肩带（只有拉肩带带子，不要拉6肩套）左右分开肩带，放入宝宝。



头靠的高度调整：向上拉头靠调节把手，头靠与肩带同步上移。下压头靠调节把手，头靠与肩带同步下移。

⚠ 注意！ 在调整头靠高度前，请松开安全带。

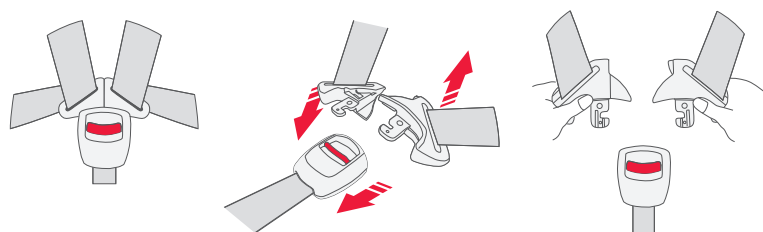
肩带调节



收紧肩带：单手拉动10调节拉带，直到肩带平放贴于孩子的身体。

⚠ 注意！ 用一只手抓住肩带4，（用食指和中指见图）然后单手慢慢拉动10调节拉带，当直到肩带及手指平放贴于孩子的身体，停止拉带10调节拉带，肩带的力度要适中。调整肩带位于孩子的肩部位置。

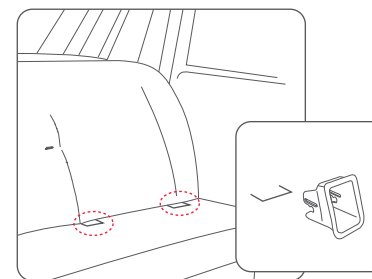
安全卡扣使用



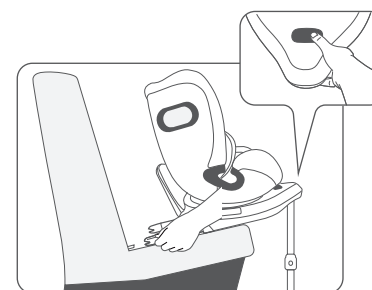
打开：用力按下搭扣中间红色按钮，两片锁舌弹出即打开状态。

扣合：将两片锁舌并拢插入搭扣中，当听到“喀哒”声表明已扣牢。

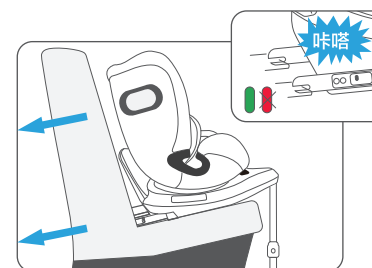
座椅安装



⚠ 注意！ 如您的汽车无配套的ISOFIX接口连接系统，请查阅适用车型列表。请选择汽车内合适的座椅安装将ISOFIX导向套安装至汽车ISOFIX连接的固定点上（有的汽车不用）。



按下26支撑腿解锁按钮，将支撑腿打开直至锁定。按下13 ISOFIX伸出按钮，用手拉出ISOFIX接头至最长。



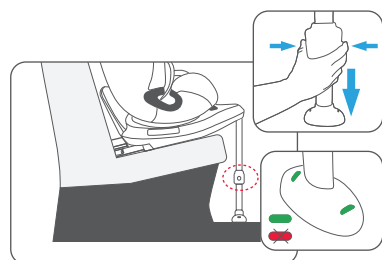
把座椅ISOFIX接头固定至汽车ISOFIX连接固定点上，直到听到：“咔”一声，27FIX状态视窗显示绿色，同时外拉一下不动即为安装成功。

按下13ISOFIX伸出按钮，将儿童安全座椅轻轻推向汽车靠背，直至与汽车靠背完全对齐贴合。

座椅安装

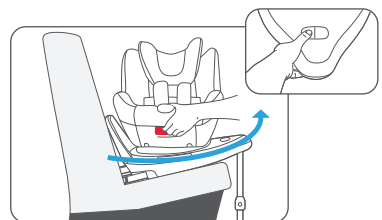
⚠ 注意！汽车ISOFIX连接锚固点位与汽车的靠背和底座之间，如有疑问，请参与车辆用户手册。

⚠ 注意！在儿童安全座椅支撑腿下位置不要放置任何物品。



按下14支撑腿调节按钮，拉出支撑腿外。使支撑腿与汽车底部接触，见15支撑腿受力指示显示为：“绿色”即可。

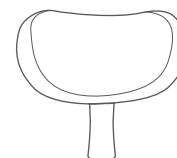
⚠ 注意！请确保飞利浦新安怡儿童安全座椅平放在汽车座椅上。



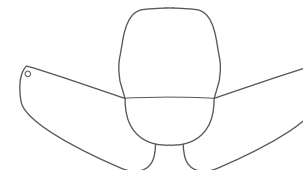
此儿童安全座椅具备一键360度旋转，方便用户放入和抱起您的宝贝。

附件配置图

头垫



靠垫

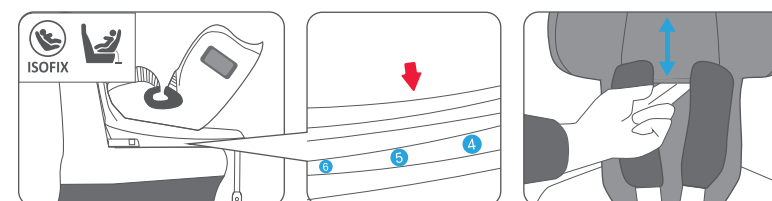


坐垫



后向0+I组安装方法

ISOFIX+支撑腿固定、适合体重：0-18KG、（年龄约0-4岁）



后向安后向安装0+I组，约0-4岁，体重不超过18kg，ISOFIX+支撑腿安装座椅，ISOFIX类别为：半通用型儿童约束系统。

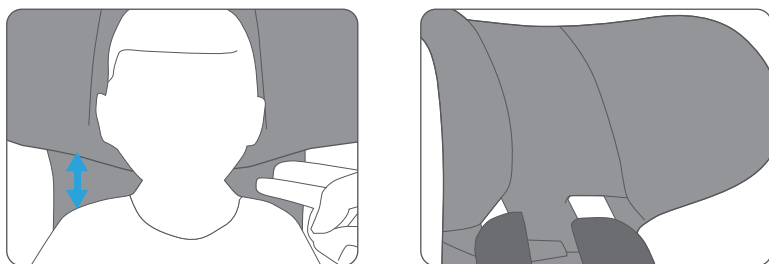
调整头枕

⚠ 注意！为给您孩子提供理想的保护和安全，头枕的高度必须调整至合适的位置。头枕无极档位可高低调节。头枕必须调整至与孩子肩部之间保留最多不超过两只手指距离的空间。

⚠ 在儿童体重未超过9KG之前，儿童安全座椅内配的头垫、靠垫及婴儿坐垫必须使用。

后向0+ I 组安装方法

ISOFIX+支撑腿固定、适合体重：0-18KG、（年龄约0-4岁）



⚠ 注意! 肩部安全带4与头枕是连接在一起的，并不能单独调整。

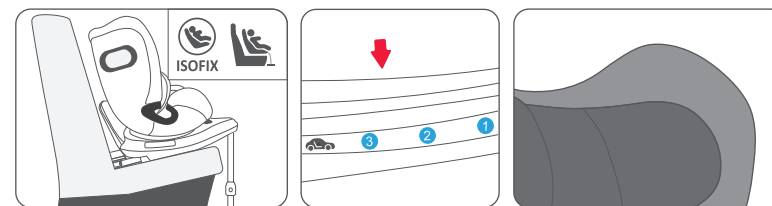
⚠ 警告! 保证腰带佩戴时能很好的约束骨盆部位。确保腰带佩戴时向下放低，儿童骨盆被牢固约束。

⚠ 警告! 不得使用除说明文件描述的和儿童约束系统上标识的任何其他受力点。

⚠ 警告! 在儿童达到体重 11kg 之后，禁止使用儿童安全座椅内配的头垫、靠垫及坐垫。

前向 I 组安装方法

ISOFIX+支撑腿固定、适合体重：9-18KG、（年龄约9个月-4岁）



前安装I组，约9个月-4岁，体重不超高18kg，ISOFIX+支撑腿安装座椅，ISOFIX类别为：半通用型儿童约束系统（安全座椅）15个月以上及体重超过13KG，可使用前向安装儿童安全座椅。为了给孩子提供周全的保护，我们建议尽可能长时间的使用儿童安全座椅后向位置。如孩子腿部空间不足的情况下，可使用前向安装。了解更多如何保护你的孩子，可参阅“安全带调整固定”章节。

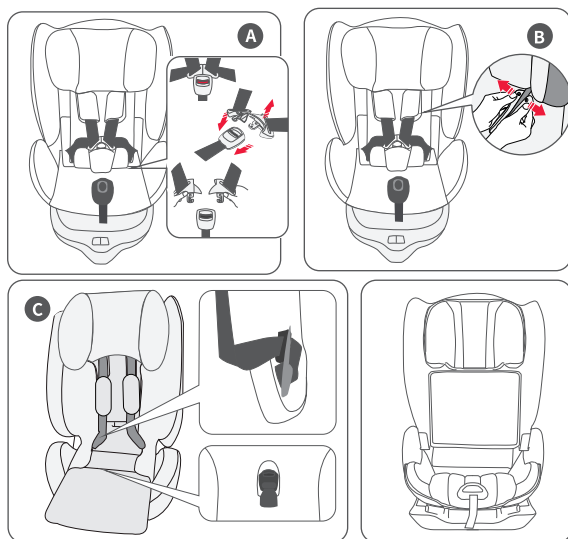
⚠ 注意! 根据交通事故统计证实，儿童安全座椅以面向行车方向反方向安装会更安全。因此，我们建议尽可能长时间的使用儿童安全座椅后向位置。

⚠ 警告! 保证腰带佩戴时能很好的约束骨盆部位。确保安全带佩戴时向下放低，儿童骨盆被牢固约束。

⚠ 警告! 不得使用除说明文件描述的和儿童约束系统上标识的任何其他受力点。

II III组的安装方法

II III组的安装方法组5点式安全带的隐藏式说明



II III组使用时，五点式安全带系统不用拆除，本座椅采用隐藏式收起5点式安全带系统。为您在I组和II III组转换使用中更便利、更安全。

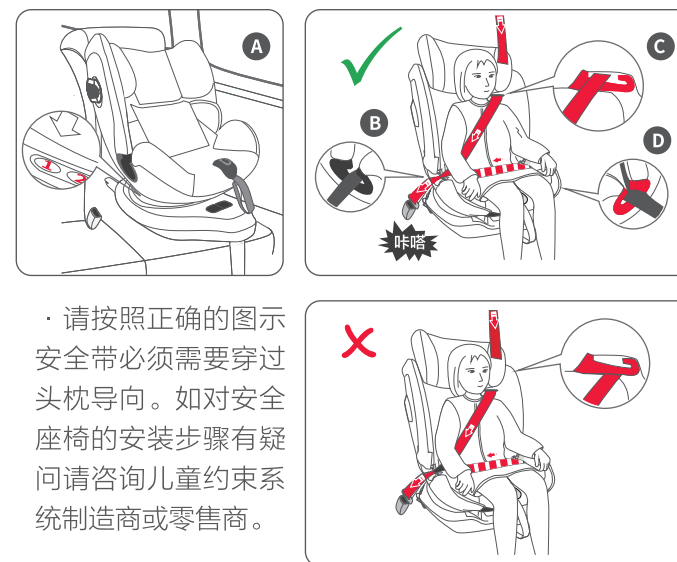
打开安全扣(如图A)，安全扣从护裆片拉出,通过底座布套中间孔放于布套下，护裆片翻下平放到安全扣上面。掀起靠背中间布套，请把肩套平摊放于靠背内做背垫使用，或取消也可(图B)。肩带捋平向下，掀起底座布套，将左右插片放到左预留的位置里，布套放回，理顺。(图C)

警告:禁止使用任何前置护体，除非安全座椅使用手册有标明或说明。汽车安全带必须按说明书使用，使用II III组时，不允许使用支撑腿。

II III组的安装方法

三点式车载安全带+FIX安装、适合儿童体重15-36kg(年龄约3-12岁)半通用类儿童约束系统使用儿童安全座椅与汽车安装用FIX连接时见说明书19-20页。

注意:II III组儿童安全座椅的使用一定要把支撑腿收至最短，靠背调至直立角度。



· 请按照正确的图示
安全带必须需要穿过
头枕导向。如对安全
座椅的安装步骤有疑
问请咨询儿童约束系
统制造商或零售商。

· 将五点式安全带系统隐藏后调整座椅头靠到适合的儿童肩部高度，II III组头靠有7档可以调节，靠背放于档位位置，不可调至其他档位,将座椅紧靠在汽车座椅上放置。(图A)

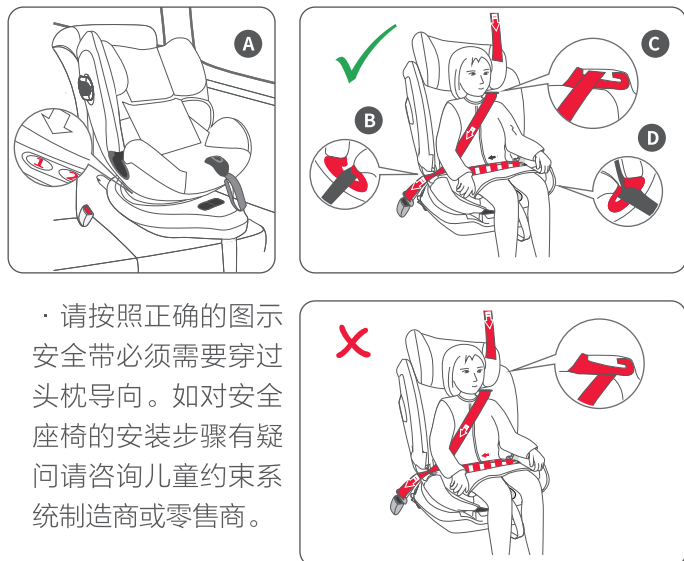
· 儿童坐好后，将汽车安全带从卷收器里全部拉出，按图示方向汽车安全带的肩带穿过安全椅头靠一边的上安全带导向槽(图B)及座椅另一边的下安全带导向槽。(图C)

II III组的安装方法

· 汽车安全带的腰带需从安全座椅两侧安全带导向槽同时通过，并扣上汽车安全带插口。(图D)

根据儿童体型，调整安全带至适宜松紧度，将多余的汽车安全带拉回卷收器内，确保安全带无扭曲翻面，座椅无晃动。

三点式车载安全带安装、适合儿童体重15-36kg(年龄约3-12岁)通用类儿童约束系统。

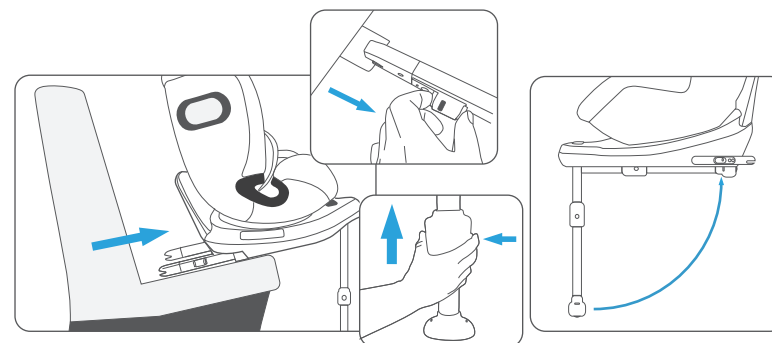


· 请按照正确的图示安全带必须需要穿过头枕导向。如对安全座椅的安装步骤有疑问请咨询儿童约束系统制造商或零售商。

· 五点式安全带系统隐藏方法见（24页）

· II III组的安装使用（见25页）的内容，不用使用FIX接口及支撑腿都收缩最短即可。安装后请检查：将多余的汽车安全带拉回卷收器内，确保安全带无扭曲翻面，座椅无晃动。

从汽车上拆除座椅

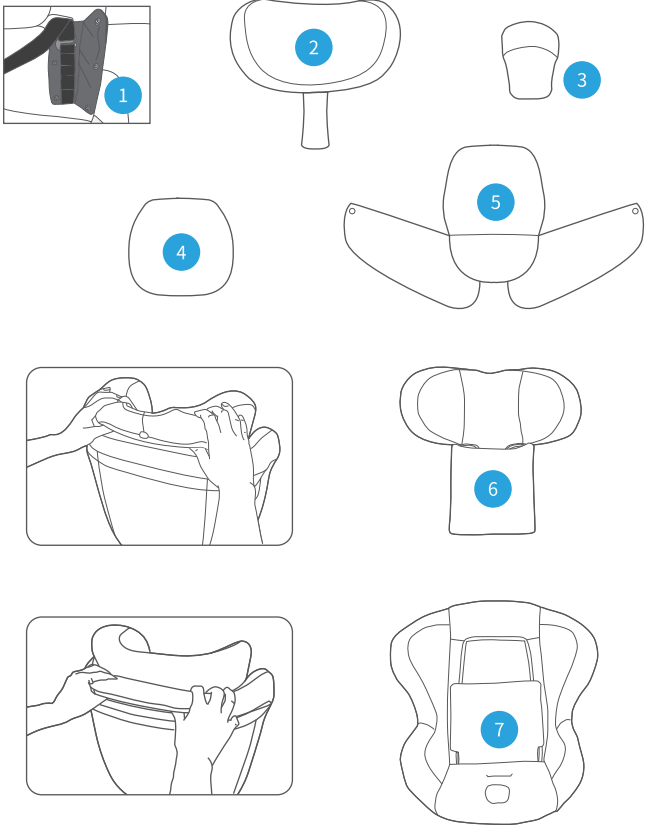


· 解锁两侧的ISOFIX接头的24、25解锁按钮（听见“咔”一声，见27FIX状态视窗显示红色即为解锁。两边方法相同。

· 取出座椅，按下13ISOFIX伸出按钮，单手缩回23FIX至最短位置。

· 按下14支撑腿调节按钮缩短支撑腿，并将支撑腿折回只底座下面的卡钩位置。

布套拆卸



- 1.解开护肩套纽扣，按图示序号顺序依次从1开始取下护肩套，头垫、及护胯套、靠垫及坐垫。
- 2.翻起头靠布套的一点，顺头靠边取消头靠布套。
- 3.轻拉出靠背布套的一点，顺靠背与外盖板的缝隙拉出靠背布套，把靠背四边的布套都拉出后就可取下靠背布套了。

使用说明

感谢您购买飞利浦新安怡品牌GAIA（盖亚）汽车儿童安全座椅！

本说明书采用的插图是为了说明产品的操作方法和产品结构，当实物与图存在少量差异时，请以实物为准。

为了改良产品的品质，在没有予以告知的情况下，我们可能更改产品的部分结构和外观，请谅解。

汽车儿童安全座椅使用中的常见问题及维护

您在使用中发现汽车安全带太短，有以下解决方法：

- 请尝试在不同的座位上使用。
- 将汽车的座椅向后调节。
- 假如您汽车的安全带可以调节,请调到较低且合适的位置。
- 请将安全带中松弛的地方拉平。
- 假如您使用中发现汽车安全座椅无法放平；请尝试在汽车不同位置上放置。

定期检查是否有零件磨损或损坏。如果发现零件损坏，请不要使用。

搭扣

- 食物、饮料或其它残渣可能积留在搭扣内，请用温水清洗。搭扣功能正常时，可以听到“喀哒”声。

安全带和塑胶件

- 用温水和中性肥皂擦净。

使用说明

关于布套


· 请勿拆卸布套后使用本产品；

布套可以拆洗，但我们不建议您经常拆卸布套。一旦您拆洗布套，请务必按原结构重新安装，并确定没有少装或错装任何部件；

· 清洗布套时请用肥皂和温水轻轻擦洗，请不要使用任何清洁剂、溶剂或药性很强的肥皂；

· 请勿拆卸、移动或改变汽车儿童安全座椅的布套或安全带系统的任何结构、部件；请勿在布套、安全带系统上添加任何润滑剂或其它化学物品；护肩和胯垫在清洗时请在水温40度以下手洗，平铺晾干。

· 请勿干洗、转筒式干燥，并远离强光照射。

| 主要成分 |
|---|
| 座椅套外层：涤纶 填充物：聚酯短纤 座椅套里层：涤纶 |
| 单独清洗，最高不超过40℃水温手洗， 不可漂白，平铺晾干，不可翻转干燥， 不可熨烫，不可干洗 |
|  |

使用说明

使用注意事项

· 使用本产品前，请仔细阅读您汽车的使用说明书。

· 请保管好本说明书，以便于反复查阅。

· 本产品要求您的汽车安全带为三点式牵引型安全带。

· 如果您的汽车上装有安全气囊，请谨慎使用。

· 请勿购买二手或转让本类产品。

· 请不要将本产品放在高处。

· 禁止使用非生产商提供的附件。

技术支持

· 详情请登录 www.philips.com.cn/babytravel



Manufacturer and seller: Babybell Maternal & Child Supplies (Shanghai) Co.Ltd.
Address: Room 7188, 7th Floor, No.348 Gongyuan Road, Qingpu District, Shanghai
Telephone: 4000-080-996
Email: philips.avent.babytravel@ibabybell.com

PHILIPS

AVENT

GAIA

Child car seat Instruction manual

Group: 0+ / I / II / III group (0–36kg)
Suitable for children aged 0–12



Failure to follow the warnings on the labels and in the instruction manual can result in the death or serious injury of your child.

Table of contents

| | |
|---|-----------|
| Important notice | 02 |
| Warning | 05 |
| Safety instructions | 07 |
| Installation mode selection | 08 |
| Part name | 10 |
| Installation on the car's correct position | 12 |
| Installation instructions | 15 |
| Adjusting the child seat | 16 |
| Harness adjustment and secure the baby | 17 |
| Shoulder strap adjustment | 18 |
| Safe buckle usage | 18 |
| Installation of child seat | 19 |
| Accessory configuration diagram | 21 |
| Reward installation for group 0+I | 21 |
| Forward installation for group I | 23 |
| Installation way of group II III(15-36KG) | 24 |
| Removing the seat from the car | 27 |
| Removing cloth cover | 28 |
| Instructions for use | 29 |

©2021 Babybell Maternal & Child Supplies (Shanghai) Co.Ltd. All rights reserved.

Philips Avent and the Philips Shield Emblem are registered trademarks of Koninklijke Philips N.V. and are used under license.

This product has been manufactured by and is sold under the responsibility of Babybell Maternal & Child Supplies(Shanghai) Co., Ltd., and Babybell Maternal & Child Supplies(Shanghai)Co., Ltd. is the warrantor in relation to this product.

Important notice

· This child restraint system complies with the ECE R44/04 standard for use in the compatible car seats on the vehicles as indicated by vehicle manufacturers in the vehicle user manual. It will fit most, but not all vehicles. Please read the applicable car list to check that your vehicle is listed on it. If your car is not equipped with ISOFIX, you need to contact the car manufacturer.

· This is the ISOFIX child restraint system which complies with ECE R44/04 regulation, for use in vehicles equipped with ISOFIX fixtures.

· The system is installed in the ISOFIX fixed position according to the type of child restraint system and the type of fixing device (as described in the vehicle manual).

· The suitable mass group and ISOFIX size class of the ISOFIX child restraint system to be installed are: The rearward use group 0+I is: D-ISO/R2. The forward use group I is: B1-ISO/F2X.

· If in doubt, please consult either the manufacturer or the retailer of the child restraint system.

· It is only applicable for car models equipped with a 3-point/retractor belt that meets the requirements of GB 14166 or ECE R16.

· If the adult seat belt interferes with the position of the main stress point of the child restraint system, it cannot be used.

· This child restraint system complies with the "restricted/semi-universal" application and is suitable for installation in the following car seat positions.

| NOTICE: | | |
|--|---------------|--------------------------------|
| CAR MODEL (Suitable for all ISOFIX car models) | FRONT (No) | REAR Outer(✓) Centre(No) |

Other car seat positions may also be suitable for installing this child restraint system. If in doubt, consult the manufacturer or retailer of the child restraint system.

Important notice

· Other car seat positions may also be suitable for installing this child restraint system. This child safety seat is not suitable for installation in the front seat position with active airbags. If in doubt, please consult either the manufacturer or dealer of the child restraint system. This product is only for adult installation and adjustment.

· This is the ISOFIX child restraint system, in line with the ECE R44/04 standard. The product is produced in strict accordance with ISO9001:2015 quality management system standards.

The product has passed European regulations ECE R44/04 certification and China National Compulsory Product 3C certification.

| NOTICE: | | |
|---|---------------|--------------------------------|
| 1. This is an ISOFIX child restraint system. It is approved to ECE R44/04 regulation for general use in vehicles fitted with ISOFIX anchorages systems. 2. It will fit vehicles with anchors indicated as ISOFIX positions (as detailed in the vehicle handbook), depending on the category of the child seat and of the fixture. 3. The mass group and the ISOFIX size class for which this safety seat is intended is: 0-13Kg D, 9-18Kg B1. | | |
| CAR MODEL (Suitable for all ISOFIX car models) | FRONT (No) | REAR Outer(✓) Centre(No) |

Other car seat positions may also be suitable for installing this child restraint system. If in doubt, consult the manufacturer or retailer of the child restraint system.

Important notice

Thank you for using Philips Avent brand 360° rotating full-group ISOFIX child car seat (child restraint system).

- This product is an ISOFIX child car seat. ISOFIX+ Supporting leg is easy to install, and the product can be rotated 360° . It can face the door for parents to put the baby in, adjust the height of the headrest suitable for the baby, fasten the seat belt for the baby, and adjust the suitable backrest angle.
- It is recommended to use the rearward child restraint system to the age of 4 years old because the bones and cervical spine of infants and young children are weak . When the back of baby is forward, it can be relatively more protective for infants.
- 360° rotating ISOFIX child car seat for all groups can be used backwards: group 0+I uses ISOFIX + Supporting leg fixed child seat, suitable for infant weight: 0-18KG, age: birth to 4 years old, as ISOFIX Semi-Universal child restraint system.
- Forward use: Group I uses ISOFIX+ Supporting leg to fix the child seat, suitable for infant weight: 9-18KG, age:9 months-4 years old, as ISOFIX Semi-Universal child restraint system.
- Forward use: Group II and III are fixed with FIX+ 3-point vehicle belt, suitable for children's weight: 15-36KG, age:3-12 years old, as semi-universal child car seat.
- Forward use: Group II and III are fixed with 3-point vehicle belt, suitable for children's weight: 15-36KG, age: 3-12 years old, as universal child car seat.
- Please keep the manual properly for future reference.
- For the child restraint system in the form of ISOFIX, please read the instructions on the ISOFIX fixing points in the car manufacturer's manual before use.

Notice

- 1.This is a "Universal" child restraint. It is approved to ECE R44/04 regulation, for general use in vehicles and it will fit most but not all car seats.
- 2.A correct fit is likely if the vehicle manufacturer has declared in the vehicle handbook that the vehicle is capable of accepting a "Universal" child restraint for this age group.
- 3.This child restraint has been classified as "Universal" under more stringent conditions than those applied to earlier designs which do not carry this notice.
- 4.If in doubt, consult either the child restraint manufacturer or the retailer.

WARNING

To ensure that your child is protected to a greater degree, please read the following instructions carefully:

- 1.Do not put the child on seats with activated airbag under any circumstances.
- 2.Please read the relevant ISOFIX and LATCH interface instructions in the car user manual provided by the car manufacturer before installing this seat.
- 3.The safety belt of the child restraint system cannot be changed or replaced with other belts at will, to ensure that the webbing connecting the child restraint system with the vehicle should be fastened tightly. The webbing that restrains children should be adjusted according to the child's body. The webbing must not be twisted to ensure that it is installed according to the manufacturer's instructions.
4. When traveling with your baby, check the fixed baby's shoulder strap and waist belt to ensure that the waist belt can well restrain the baby's pelvic position.
- 5.The rigid parts and plastic parts of the child restraint system should be placed and installed in accordance with the requirements of the manual to ensure that the child restraint system is not blocked by the movable seat or door in the car.
6. Products without certification or modified are dangerous. If there is no installation instructions provided by the manufacturer, it is also very dangerous.
- 7.It is very important for the ISOFIX interface and the supporting leg to be properly fixed and locked, so please be sure to check the child seat fixation before taking your baby out.
8. Please do not leave your child unattended in the restraint system.
9. When the car is parked under the scorching sun, the temperature inside will rise. It is recommended to cover it with a towel when you are not using the child car seat to avoid burning your baby.
- 10.In the event of an accident, it is very important to move the baby out of the car quickly. This means that the safety buckle must be of good performance and cannot be blocked or damaged. Therefore, you should pay attention to checking the safety buckle regularly.
- 11.Check the safety belt every time you use the car seat. If the safety belt is loose or detached, it will be dangerous for your baby.

WARNING

12. Luggage in the car or sharp and hard objects should be tied well. Loose objects may hurt others in the event of an accident.
13. When the child car seat is not in use, it is recommended that the seat always be secured to avoid being thrown out in the event of an accident.
14. In an emergency, press the red button on the safety buckle to release the seat belt and take the child out.
15. When the child car seat is not in use, please place it in an appropriate place, do not cover heavy objects and touch corrosive substances.
16. Never use child car seat without its cover and it is advised not to use a cover that is not recommended by the manufacturer, because the cover material will affect the overall performance of the child restraint system.
17. If your child car seat is damaged in an accident, it is forbidden to use it again and you must replace it with a new one.
18. Please do not use second-hand car seat, otherwise it will cause danger.
19. Warning! Do not use any stress points other than those described in the instruction document and marked on the child restraint system.




Safety instructions

- If you are driving for a long time, please stay appropriately on the way, otherwise the child will get tired easily. Please keep the child in the child seat when the car is moving.
- If the child unfastened the safety belt of the child car seat, the car should be parked in a safe place immediately, and the safety belt should be re-fastened before starting the car.
- Do not leave the safety buckle in a half-locked state.
- Ensure that the tightness of the child car seat belt and the position of the protective pad fully comply with the requirements of the instructions.
- Every time use the child car seat, make sure that the car seat belt is tightened and the seat is firmly installed.
- Do not attempt to change any original components or add parts to the seat, otherwise its safety and function may be seriously affected.
- Parents should have a correct concept of travel safety, and set an example to fasten the car seat belt, and do not violate the driving safety principles because of children's crying.

Notice

1. This is an ISOFIX CHILD RESTRAINT SYSTEM. It is approved to Regulation No.44,04 series of amendments for general use in vehicles fitted with ISOFIX anchorages systems.
2. It will fit vehicles with positions approved as ISOFIX positions (as detailed in the vehicle handbook), depending on the category of the child seat and of the fixture.
3. The mass group and the ISOFIX size class for which this device is intended is Group 0+I, 0-18kg, Class D, Group I, 9-18kg, Class B1.

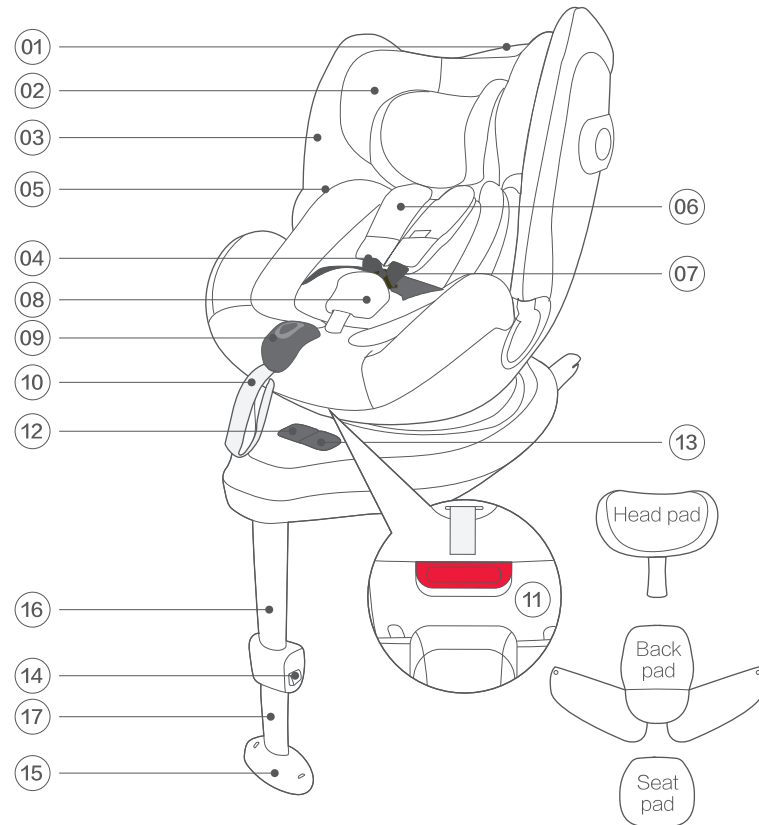
Installation mode selection

| Baby weight | Installation mode | Installation diagram | Reference age | Seat position | Fixed mode |
|-------------|-------------------|--|----------------------|---------------|---|
| 0-18kg | Baby mode |  | 0-4 years old | position 4-6 | ISOFIX+support leg |
| 9-18kg | Toddler mode |  | 9 months-4 years old | position 1-3 | ISOFIX+support leg |
| 15-36kg | Schoolchild mode |  | 3-12 years old | position 1 | FIX+3-point vehicle belt/3 point vehicle belt |

Conform to National standard:GB 27887-2011 ana European ECE R44/04

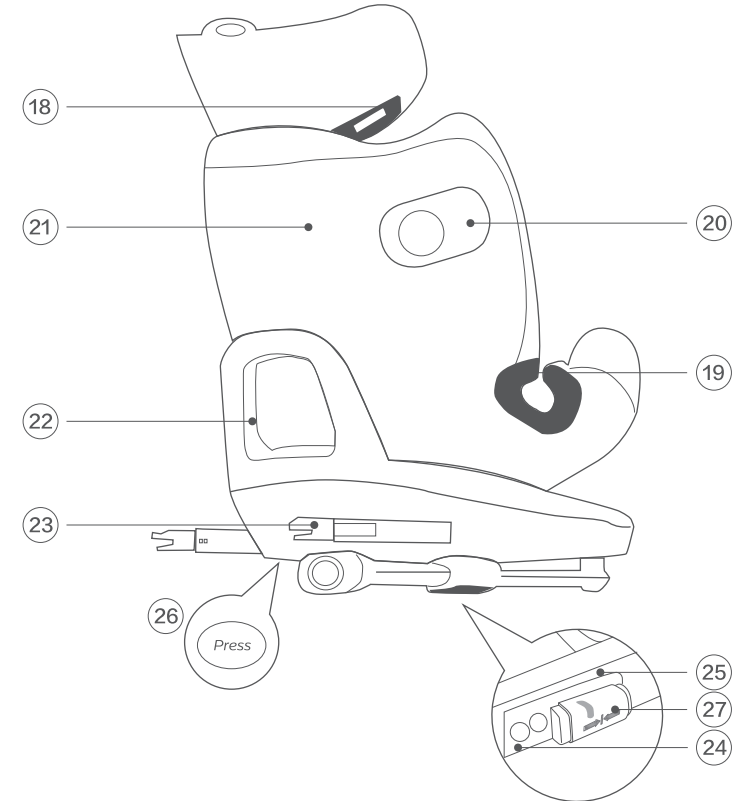
Installation mode selection

Part name



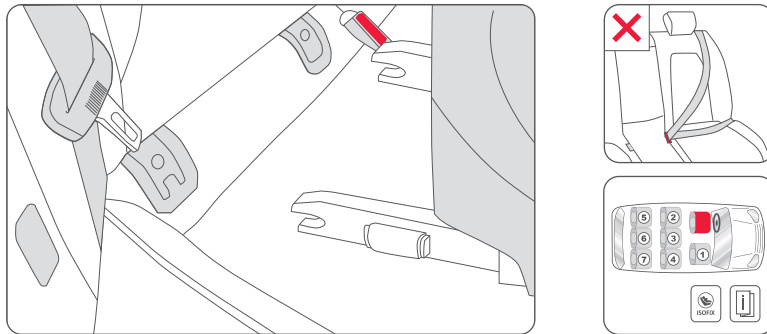
- | | |
|--|----------------------------------|
| 01. Headrest adjustment handle | 10. Adjusting strap |
| 02. Headrest | 11. Seat angle adjustment handle |
| 03. Fabric cover | 12. 360° rotation button |
| 04. Shoulder strap (shoulder safety strap) | 13. ISOFIX extension button |
| 05. Insert cushion | 14. Support leg adjusting button |
| 06. Shoulder pad | 15. Support leg indicator |
| 07. Safety buckle | 16. Support leg (inner) |
| 08. Crotch pad | 17. Support leg (outer) |
| 09. Central front adjuster | |

Part name



- | | |
|----------------------------|--------------------------------------|
| 18. Upper belt guide | 23. ISOFIX connector |
| 19. Lower belt guide | 24. ISOFIX unlock button |
| 20. Side impact protection | 25. ISOFIX second-lock button |
| 21. Backrest shell | 26. Support leg unlock button |
| 22. Base shell | 27. FIX status red and green display |

Installation on the car's correct position



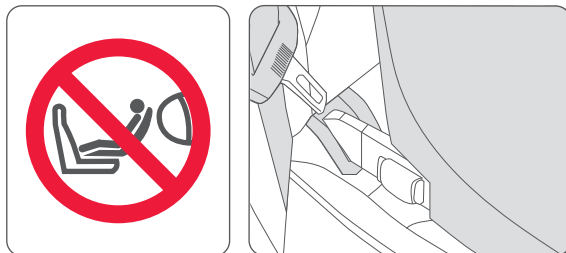
· This child restraint system complies with the ECE R44 standard for use in the compatible car seats on the vehicles as indicated by vehicle manufacturers in the vehicle user manual. It will fit most, but not all vehicles. Please read the applicable car list to check that your vehicle is listed on it. If your car is not equipped with ISOFIX, you need to contact the car manufacturer.

· In special circumstances, the child car seat can be installed in the front seat of the car. Notes are as follows:

- Check whether the seat is equipped with the ISOFIX connection system. If the ISOFIX connection system is not installed, this child car seat cannot be used.
- Disable the passenger airbag. If your car cannot disable the airbag, do not install the child seat on the front seat of the car.

Please always follow the car manufacturer's recommendations.

Warning! Any luggage or other objects liable to cause injuries in the event of a collision should be properly secured.



Installation on the car's correct position

Warning! Never leave your child unattended in the child restraint system, even for a short period of time. Protect the child restraint system against direct sun light by one covering (such as light colored cloth) to prevent high temperature from hurting child's skin.

Warning! This safety seat used for rearward and forward group I is the ISOFIX semi-universal child restraint system, and cannot be restrained by the vehicle 3-point adult seat belt.

Warning! Never install the child seat on the side seat at right angles to the direction of the car. The child seat is also not suitable for rear-facing seat in the car, such as minivans or minibuses. When the child seat is not in use, please also secure it on the seat of the car with the ISOFIX connection system to prevent the safety seat from being unstable, making you and other passengers injured when the car is in an emergency stop or a minor collision.

Safety in the car

Warning! Do not secure the child seat on seats in the car with activated airbags.

Warning! After a severe accident, the restraint system should be replaced in time. To ensure the safety of all passengers, please make sure...

Please lock the folding seat back in the car upright position.

When installing the child seat on the front passenger seat, please adjust the seat in the car to the rearmost position.

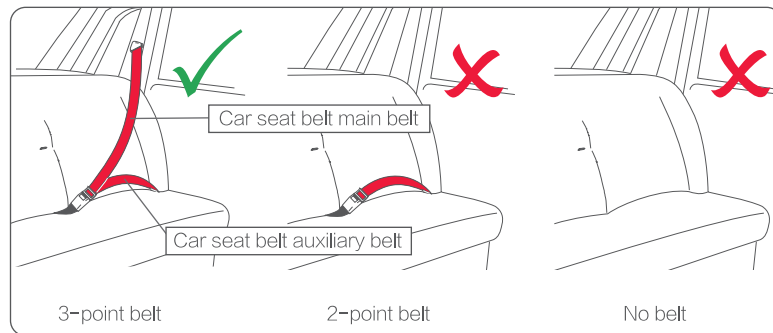
Please properly fix all objects that may cause injury in the accident. All passengers in the car must wear seat belts.

Installation on the car's correct position

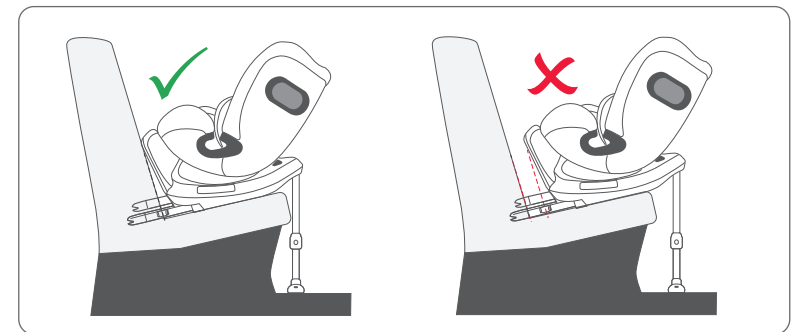
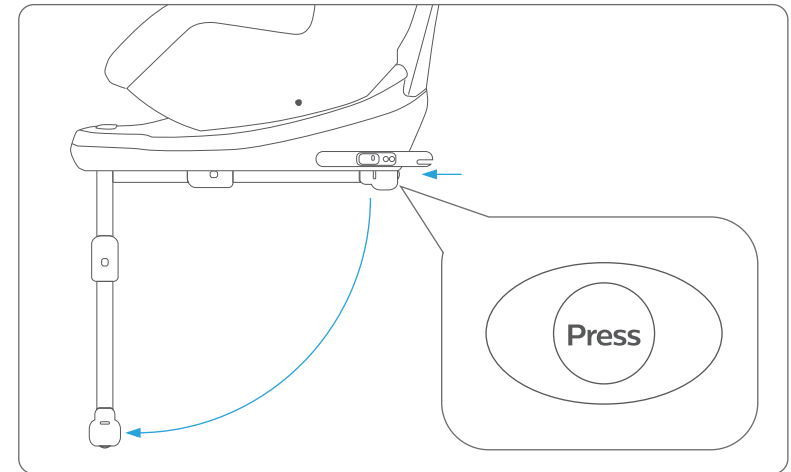
Protect your car

Some car seat covers are more sensitive (such as velvet, leather, etc.), which may cause discoloration after use.

To avoid it, you can put blankets and towels under the child safety seat. For this information, you can refer to the "Cleaning" chapter in the manual, and please follow it before using the child safety seat for the first time.

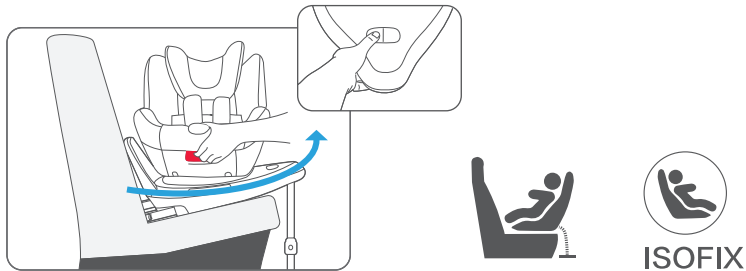


Installation instructions

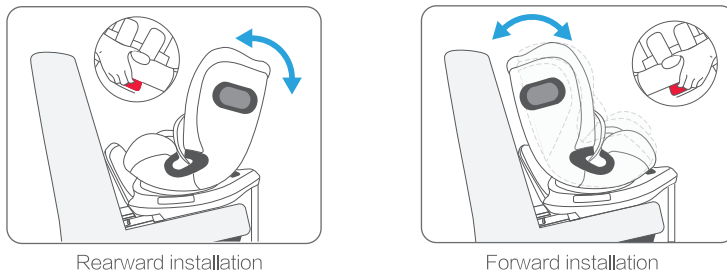


! Important! Before the child's weight exceeds 9KG, it must not be installed and used forward (According to the child safety seat industry consensus, we recommend that you use the backward restraint system to fit your child and body. Please try to extend the time for your child's backward use. Please refer to the instructions for use)

Adjusting the child seat



1. The child seat has a 360° rotation function, and the backrest can be adjusted in 3 positions at any angle to meet the needs of different comfort levels. Pull up the 11 seat angle adjustment handle, at the same time push or pull the seat to the required position. Loosen the 11 seat angle adjustment handle, push or pull the seat again to hear a sound "click", check whether the backrest angle is exact the required one. If not, please repeat the previous mode to adjust it.

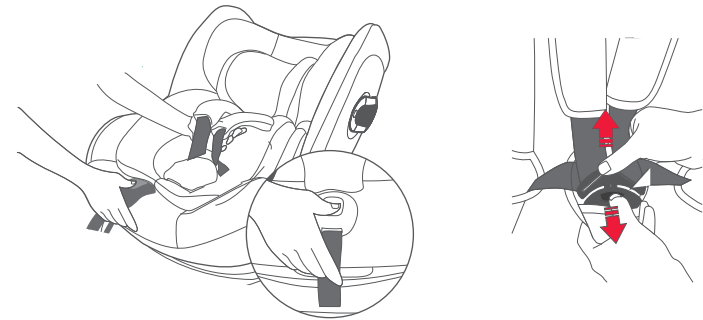


2. The child seat not only provides a 360° rotation function so that your child can easily get in and out of the carriage, but also allows you to change the seat from front-facing installation to rear-facing installation, which can meet different needs.

⚠ Caution! According to traffic accident statistics, it is safer to install child safety seats in the reverse direction facing the vehicle. Therefore, we recommend using the child safety seat in the backward position as long as possible.

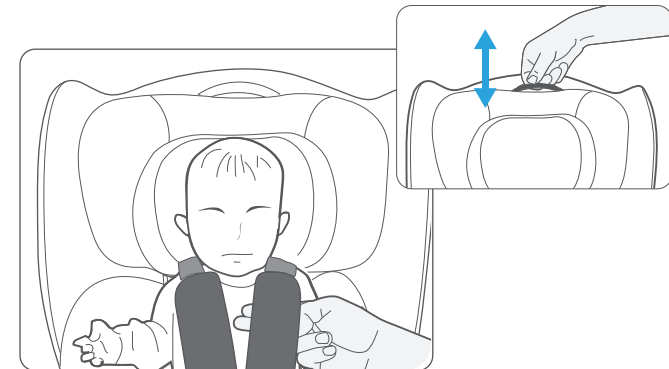
⚠ Important! Before the child's weight exceeds 9KG, it must not be installed and used forward (According to the child safety seat industry consensus, we recommend that you use the backward restraint system to fit your child and body. Please try to extend the time for your child's backward use. Please refer to the instructions for use).

Harness adjustment and secure the baby



⚠ Caution! Please ensure no toys or other objects in the child safety seat.

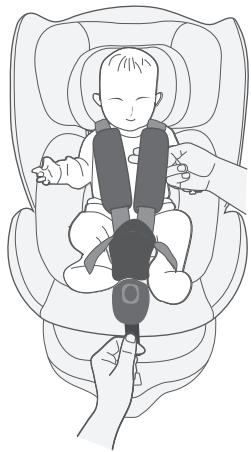
Loosen the shoulder straps: press the 9 central front adjuster, and simultaneously pull the 4 shoulder straps outwards (only pull the shoulder straps, not the 6 shoulder pads) to separate the shoulder straps from left and right, and put the baby in.



Height adjustment of the headrest and shoulder strap: Pull up the headrest adjusting handle, the headrest and the shoulder strap move up synchronously. Press down the headrest adjusting handle and move the headrest down synchronously with the shoulder strap.

⚠ Caution! Please loosen the seat safety belt before adjusting the height of the headrest.

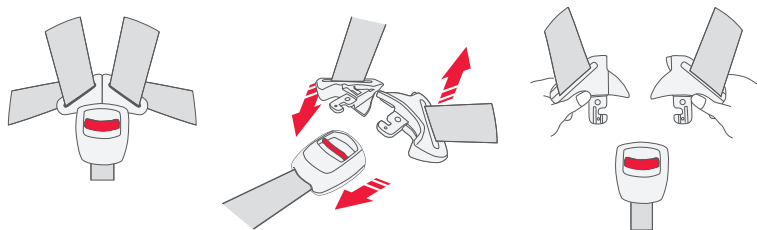
Shoulder strap adjustment



Tighten the shoulder strap: Pull 10 adjusting strap with one hand until the shoulder strap is flat against the child's body.

Caution! Grasp the 4 shoulder strap with one hand (see figure with index finger and middle finger) and then slowly pull 10 adjusting strap with one hand until the shoulder strap and fingers are flat against the child's body, stop pulling the 10 adjusting strap, the strength of pulling shoulder straps should be moderate. Adjust the shoulder strap to be at the child's shoulder.

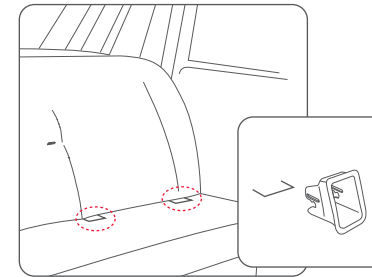
Safe buckle usage



Open: Press the red button in the middle of the buckle firmly, and the two lock tongues will pop out and open.

Fastening: Put the two lock tongues together and insert them into the buckle. When you hear a "click" sound, it means that it has been fastened firmly.

Installation of child seat

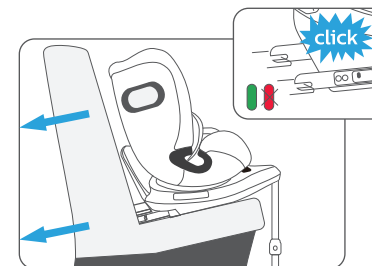


Caution! If your car isn't equipped with ISOFIX connection system, please refer to the list of applicable models.

Please choose a suitable seat in the car to install the ISOFIX guide sleeve to the fixing point of the car ISOFIX connection (some cars do not use it).



Press the 26 support leg unlock button and open the support leg until it is locked. Press 13 ISOFIX extension button, pull out the ISOFIX connector to the biggest length.



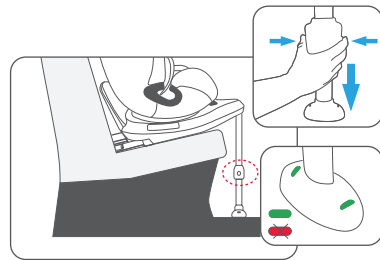
Fix the child seat ISOFIX connector to the car ISOFIX connecting fixing point until you hear "click", the 27 FIX status display shows green, and at the same time pull the seat motionless indicating the installation is successful.

Press the 13 ISOFIX extension button and gently push the child safety seat towards to the backrest of the car until it is completely aligned and fits with the backrest of the car.

Installation of child seat

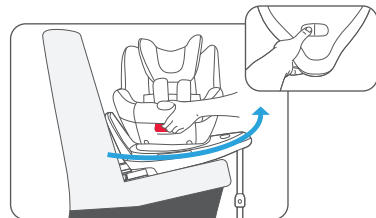
⚠ Caution! The car ISOFIX anchor point is between car's backrest and base. If you have any questions, please refer to the car user manual.

⚠ Caution! Do not place any objects under the support leg of the child seat.



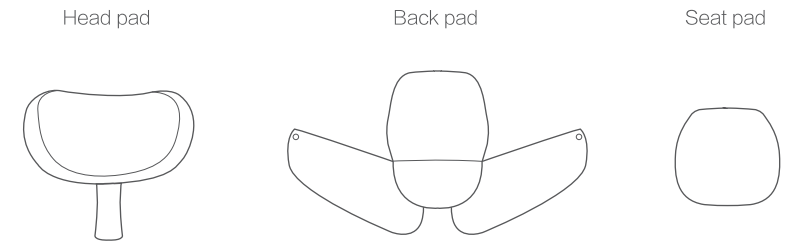
Press the 14 support leg adjusting button and pull out the support leg. Make the support leg contact with the floor of the car, make sure 15 support leg indicator is displayed as "green".

⚠ Caution! Please make sure the child safety seat is placed flat on the seat of car.



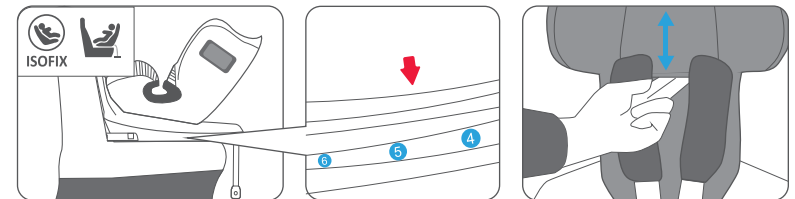
This child safety seat has one-button 360 rotation feature, which is convenient for users to put your baby in and out.

Accessory configuration diagram



Rearward installation for group 0+I

ISOFIX+ support leg to fix, suitable for weight: 0–18KG, (age about 0–4 years old)



Rearward installation group 0+ I, about 0–4 years old, weighing less than 18kg, ISOFIX+support leg installation seat, ISOFIX category is: semi-universal child restraint system

Adjusting the headrest

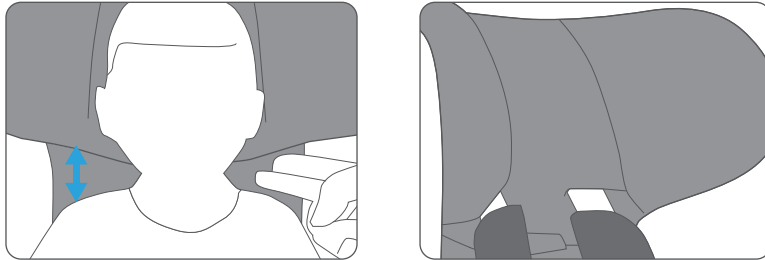
⚠ Caution! In order to provide your child with ideal protection and safety, the height of the headrest must be adjusted to a suitable position. The height of the headrest can be adjusted to high or low positions.

The headrest must be adjusted to leave a gap no more than two fingers between the child's shoulders.

⚠ Before the child's weight exceeds 9KG, the head pad, back pad and seat pad must be used.

Rearward installation for group 0+I

ISOFIX+ support leg to fix, suitable for weight: 0–18KG,(age about 0–4 years old)



⚠ Caution! The shoulder strap 4 and the headrest are connected together and cannot be adjusted separately.

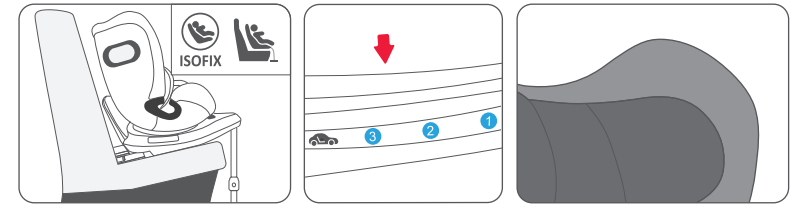
⚠ warning! Ensure that the waist safety belt can well restrain the pelvis when wearing. Ensure that the waist safety belt is lowered when wearing, and the child's pelvis is firmly restrained.

⚠ warning! Do not use any stress points other than those described in the instruction document and marked on the child restraint system.

⚠ warning! Never use the head pad, back pad and seat pad in the child safety seat when the child's weight reaches 11kg.

Forward installation for group I

ISOFIX+ support leg to fix, suitable for weight: 9–18KG,(age about 9 months–4 years old)



Forward installation group I, about 9 months–4 years old, weighing less than 18kg, ISOFIX+ support leg mounting, ISOFIX category: semi-universal child restraint system (safety seat). If over 15 months and weighing over 13kg, the child safety seat can be installed forward. In order to provide comprehensive protection for children, we recommend using the child safety seat in the rearward position as long as possible. If the child's leg space is insufficient, the forward installation can be used. To learn more about how to protect your child, please refer to the chapter "Harness adjustment and secure the baby".

⚠ Caution! According to traffic accident statistics, it is safer to install child safety seats facing the opposite of the driving direction.

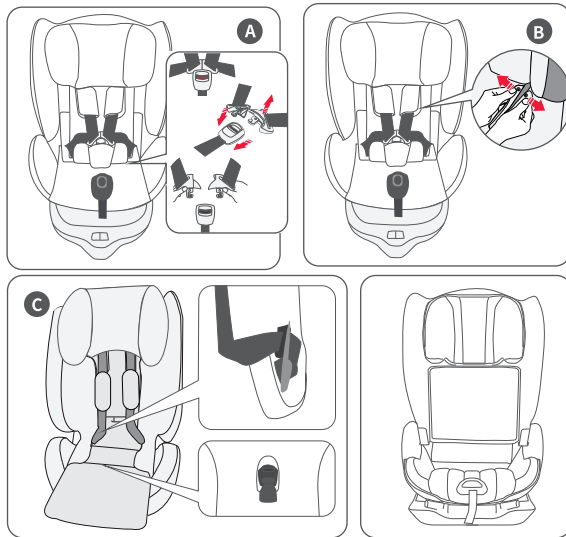
Therefore, we recommend using the child safety seat in the rearward position as long as possible.

⚠ Warning! Ensure that the waist safety belt can well restrain the pelvis when wearing. Ensure that the waist safety belt is lowered when wearing, and the child's pelvis is firmly restrained.

⚠ Warning! Do not use any other stress points than those described in the documentation and marked on the child restraint system.

Installation way of Group II III(15-36KG)

Hidden description of 5-point safety belts



The 5-point safety belt system does not need to be dismantled when used by group II III. This seat adopts the hidden five-point safety belt system. It is easier and safer for conversion between group I and group II III.

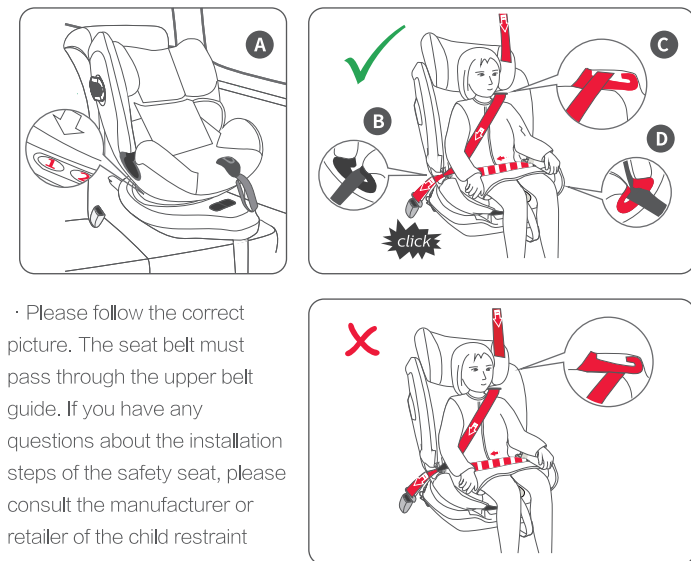
Open the safety buckle (as shown in Figure A), pull out the safety buckle from the crotch pad, put it under the cloth cover through the middle hole of the base cloth cover, and put the crotch pad on top of the safety buckle horizontally. Lift the cloth cover in the middle of the backrest and put the shoulder pad flat inside the backrest for backing or cancel it (Figure B). Straighten the shoulder strap down, lift the base cloth cover, place the left and right inserts in the reserved position on the left, put the cloth cover back, and straighten out (Figure C).

Warning! Do not use any front guard unless specified in the safety seat manual. The car seat belt must be used according to the instructions. Supporting leg is not allowed for group II III.

Installation way of Group II III(15-36KG)

Three-point car seat belt +FIX installation, suitable for children weighing 15-36kg (age about 3-12 years old) as semi-universal child restraint system, when using child safety seat and car installation FIX connection, see the instruction on page 13-14.

Note: The use of Group II III of child safety seat must be the shortest supporting leg, back to the upright angle.



· Please follow the correct picture. The seat belt must pass through the upper belt guide. If you have any questions about the installation steps of the safety seat, please consult the manufacturer or retailer of the child restraint system.

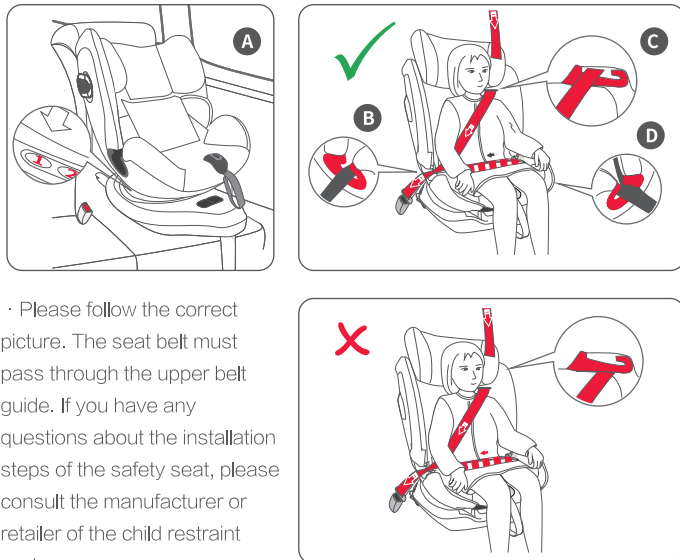
· Hide the five point safety belt system and adjust the headrest to the appropriate height of the child's shoulder. Group II III headrest has 7 adjustable positions. The backrest is in the position 1 and cannot be adjusted to other positions. Place the seat close to the car seat (Figure A).

· After the child is seated, pull the car seat belt out of the retractor, and pass the shoulder strap of the car seat belt through the upper belt guide (Figure C) and the lower belt guide (Figure B) as shown in the figure.

Installation way of Group II III(15-36KG)

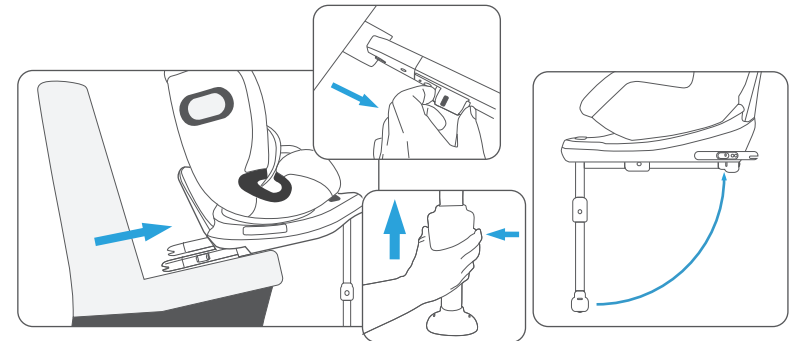
- The lap belt of the car seat belt needs to pass through the lower belt guides on both sides of the safety seat at the same time, and inserts into the car seat belt socket. (Picture D).
- Adjust the seat belt to the appropriate tightness according to the child's body type. Pull the extra car seat belt back into the retractor to ensure that the seat belt does not twist and turn over and the seat does not shake.

3-point car seat belt installation, suitable for children weighting 15-36kg (age about 3-12 years old) as universal child restraint system.



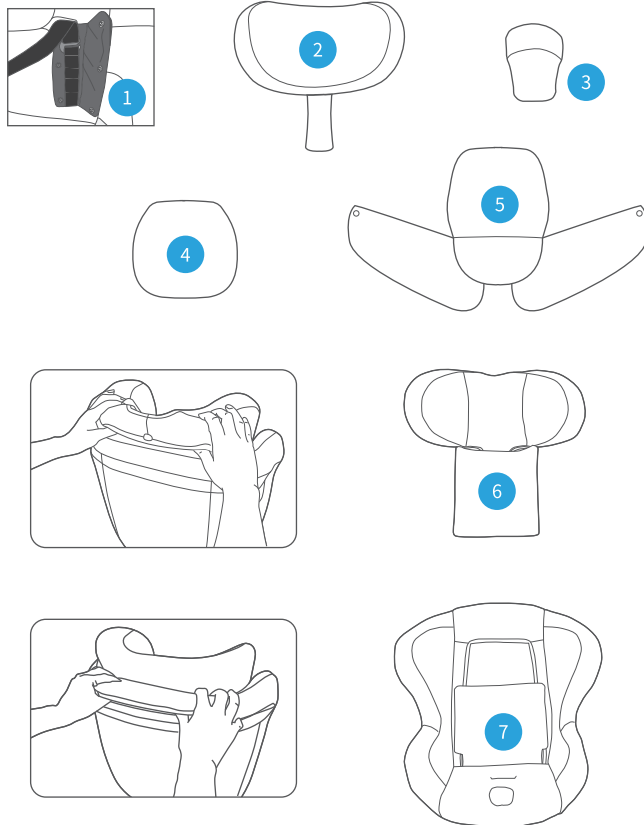
- Please follow the correct picture. The seat belt must pass through the upper belt guide. If you have any questions about the installation steps of the safety seat, please consult the manufacturer or retailer of the child restraint system.
- The five-point safety belt system hiding method is shown on (page 24).
- For the installation and use of group II and III (see page 25), the FIX connector and the support legs can be contracted to the shortest. Please check after installation: Pull the extra car seat belt back into the retractor to ensure that the seat belt is not twisted and the seat is not shaken.

Remove the seat from the car



- Press the 24 and 25 unlock buttons of the ISOFIX connectors on both sides (hear a "click"), if the 27 FIX status display shows red, it is unlocked. The methods on both sides are the same.
- Take out the seat, press the 13 ISOFIX extension button, and retract the 23 ISOFIX connectors to the shortest position with one hand.
- Press the 14 support leg adjustment button to shorten the support leg, and fold the support leg back to the hook position under the base.

Removing cloth covers



1. Unfasten the button of the shoulder pad, and remove the shoulder pad, head pad, crotch pad, back pad and seat pad from 1 in the order of the number shown in the figure.

2. Flip the headrest cloth cover up a bit, and remove the headrest cloth cover along the side of the headrest.

3. Pull out a bit of the the backrest cloth cover and pull out the backrest cloth cover along the gap between the backrest and the outer cover plate. Then pull out the cloth cover on four sides of the backrest.

Instructions for use

Thank you for purchasing Philips Avent brand GAIA child safety seat!

The illustrations used in this manual are to illustrate the operation method and product structure of the product. When there is a small difference between the actual product and the figure, please refer to the actual product. In order to improve the quality of the product, we may change part of the structure and appearance of the product without notice. Please understand.

Common problems and maintenance in the use of child safety seats.

- When you find that the car seat belt is too short during use. The following solutions are available:
- Please try to use it in a different seat.
- Adjust the car's seat backwards.
- If the seat belt of your car can be adjusted, please adjust it to a lower and suitable position.
- Please straighten the slack part in the seat belt.
- If you find that the safety seat cannot be placed flat during use; please try to place it in different positions of the car.
- Check regularly for wear or damage of parts. If the parts are found to be damaged, do not use them.

Buckle

- Food, beverages or other residues may accumulate in the buckle, please wash with warm water. When the buckle function is normal, you can hear a "click" sound.

Safety belts and plastic parts

- Wipe off with warm water and neutral soap.

Instructions for use

About cloth cover

- Do not use this product after removing the cloth cover. The cloth cover can be removed and washed, but we do not recommend that you remove the cloth cover frequently. Once you disassemble and wash the cloth cover, please reinstall it according to the original structure, and make sure that there is no missing or wrong installation of any parts;
- When cleaning the cloth cover, please scrub gently with soap and warm water, please do not use any detergent, solvent or very strong soap.
- Do not disassemble, move or change the cloth cover of the child safety seat or any structure or component of the safety belt system; do not add any lubricant or other chemicals to the cloth cover and safety belt system: please wash the shoulder pads and crotch pads by hand when the water temperature is below 40 degrees, and dry it flat.
- Do not dry clean, tumble dry, and keep away from strong light.

| Main Content |
|---|
| Cover surface: polyester Filler: polyester Cover inside: polyester Wash alone by hand, not exceeding 40°C water temperature . Dry flat. Do not bleach, tumble dry, iron or dry clean. |
|       |

Instructions for use

Cautions for use

- Before using this product, please read the instruction manual of your car carefully.
- Please keep this manual for easy reference.
- This product requires your car seat belt to be a three-point retractor seat belt.
- If your car is equipped with airbags, please use it with caution.
- Do not buy second-hand or transfer products of this type.
- Please do not place this product in high places.
- Use of accessories not provided by the manufacturer is prohibited.

Technical Support

- For details, please visit www.philips.com.cn/babytravel