

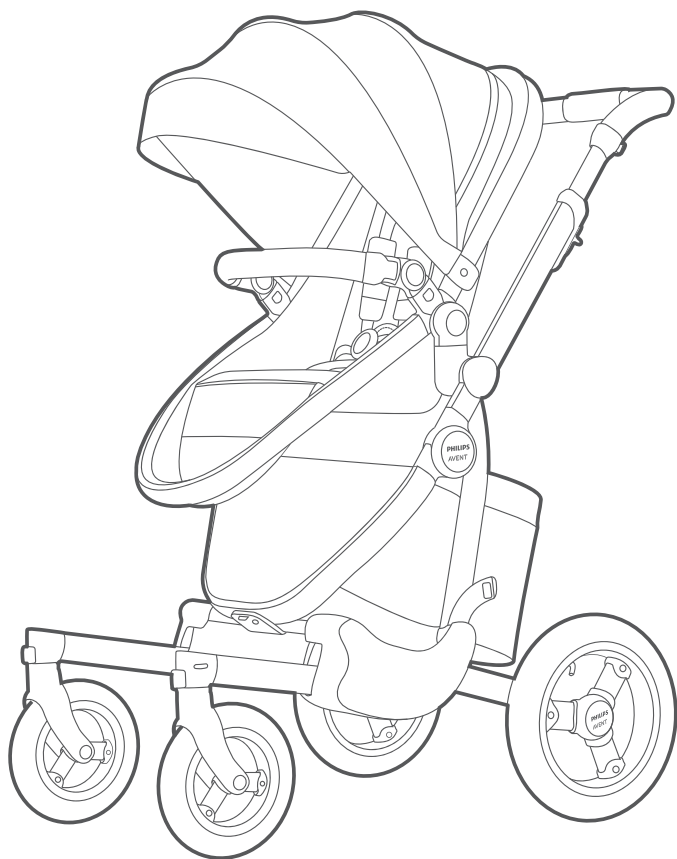
PHILIPS

AVENT

OIA (伊亚)

婴儿手推车 安装使用说明书

执行标准: GB14748-2006



使用前请仔细阅读说明书，并妥善保管以备日后查阅

目录

警告	02
维修和保养	03
产品零配件	04
座身	05
睡篮	06
车台的展开及安装	07
睡篮的安装及应用	08
车台其他部件的安装及使用	10
刹车的使用	11
安全带的使用	11
车台零部件的拆卸	12
提篮的收合	13
车台的收合	13

Philips Avent 和 Philips 盾牌图形是皇家飞利浦有限公司的注册商标，其使用需遵循皇家飞利浦有限公司的许可。

本产品由童音母婴用品（上海）有限公司负责生产和销售，童音母婴用品（上海）有限公司是本产品的担保人。

2021© 童音母婴用品（上海）有限公司保留所有权利。

警告

使用前请仔细阅读说明书且请妥善保存供日后参考。

- 如果不按照本说明书操作，可能会影响儿童的安全。
- 本推车在使用中，看护人不得离开。
- 本产品的座椅仅供6~36个月的儿童使用，最高承载重量为15千克。
- 睡篮仅适用于0-6个月大的婴儿，最高承载重量为9千克。
- 使用推车前请确保刹车装置处于锁定状态。
- 当婴儿坐在车内时，请勿折叠婴儿车。
- 确保婴儿坐在座椅上时系好安全带。
- 不要让婴儿车在斜坡上无人看管。
- 本产品不适合在奔跑或滑行时使用。
- 请勿将购物袋或其他重物放在推车的把手上，以免婴儿车翻倒。
- 当儿童在婴儿车中时，请勿拆卸或调整婴儿车的任何部件。
- 请保持塑料袋远离婴儿车，以防止婴儿窒息。
- 请不要在睡篮上使用超过20毫米厚的棉垫。
- 座椅后背的置物袋最大负载为1.5千克。
- 座椅下方的置物篮最大负载为2.5千克。
- 禁止使用非生产商提供的附件。
- 充气胎最大气压不得超过 28 P.S.I (2.0 BAR)

维修和保养

- 定期检查推车的零件是否松动、丢失、损坏或有其他任何部分损伤。根据实际情况如有必要，请安排更换或维修。
- 婴儿手推车应远离火源或高温发热体。
- 本推车布套不能漂白，不能翻转干燥，不能熨烫，不能干洗。
- 请使用中性肥皂水配合软布清洗布套、金属、皮革和塑料表面，轻轻擦拭婴儿车。擦拭过程中不要使用强刺激或腐蚀性化学液体（如任何清洁剂、溶剂或药性很强的肥皂）。擦拭后自然晾干，本婴儿车布套不可直接放入水中清洗。特殊部位除外。
- 请勿拆卸顶篷进行洗涤。请勿拆卸、移动或改变婴儿手推车的布套或五点式安全带的任何结构部件。请勿在布套、五点式安全带上添加任何润滑剂或其它化学物品。

特殊部位清洗说明

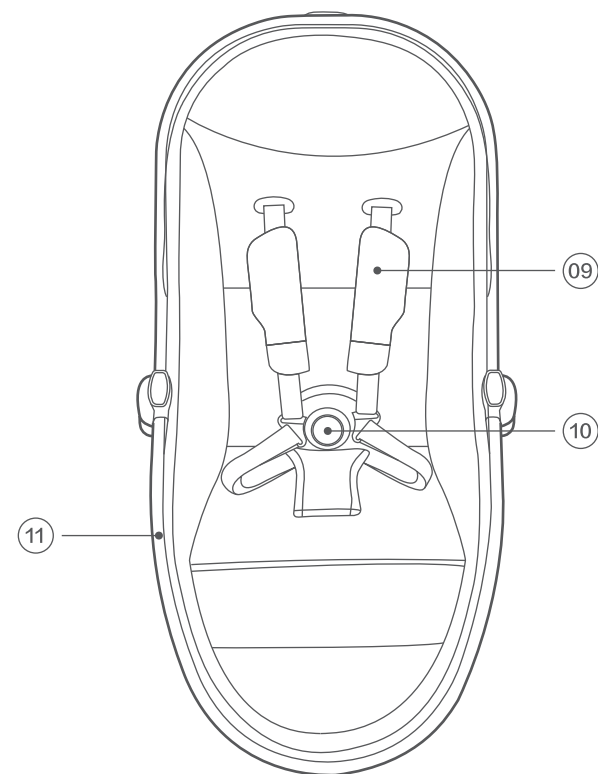
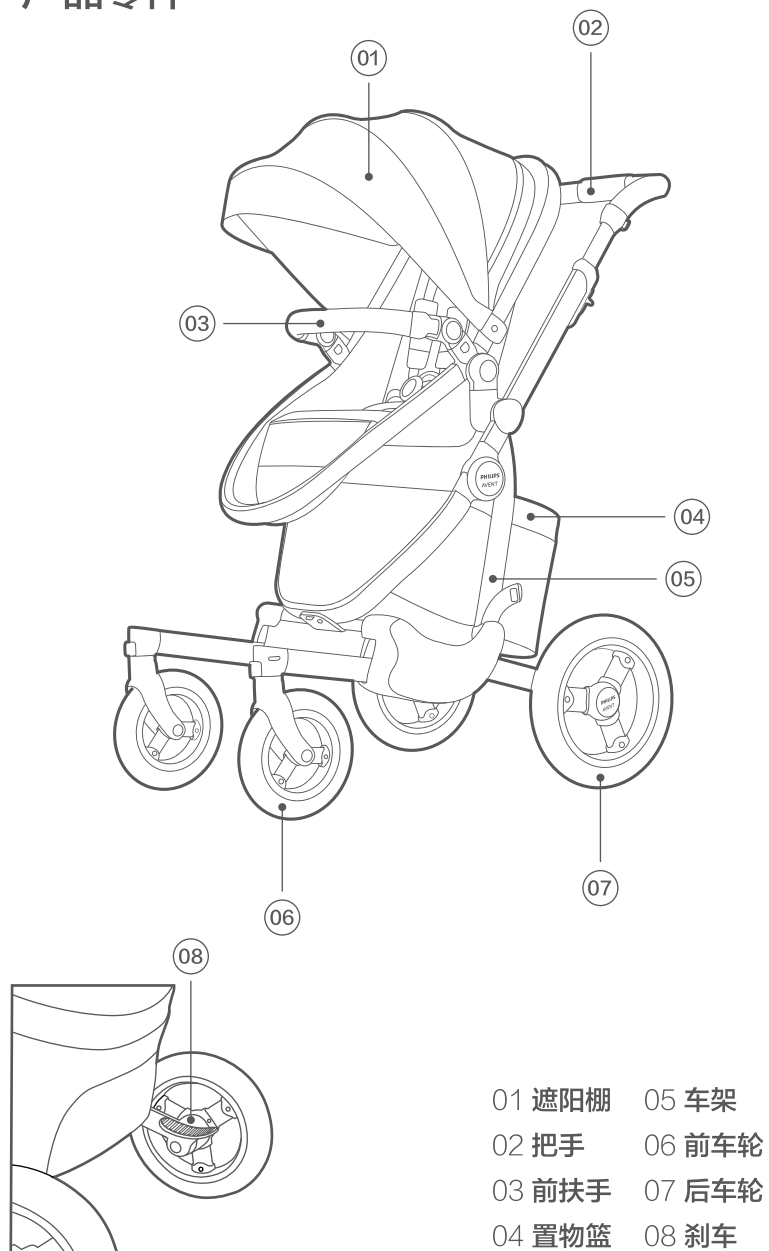
- 护肩套和睡篮棉垫外套可拆下单独清洗。在清洗时请在水温40度以下手洗，平铺晾干。请勿熨烫、干洗，请勿在阳光下暴晒。

技术支持

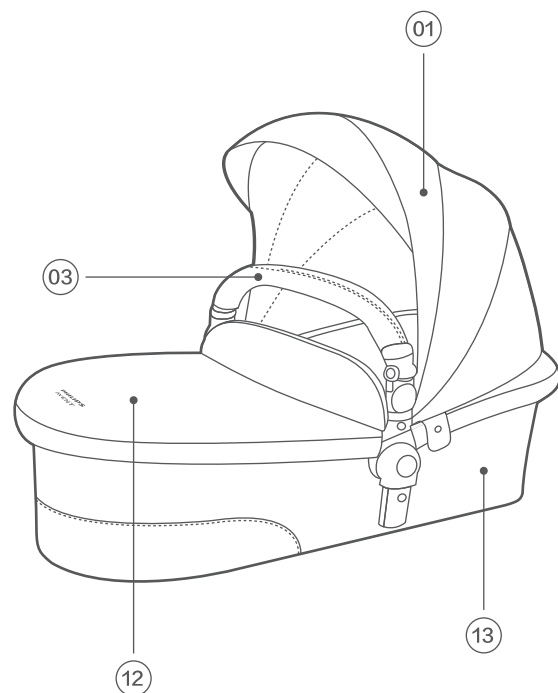
- 详情请登录 www.philips.com.cn/babytravel

产品零件

座身

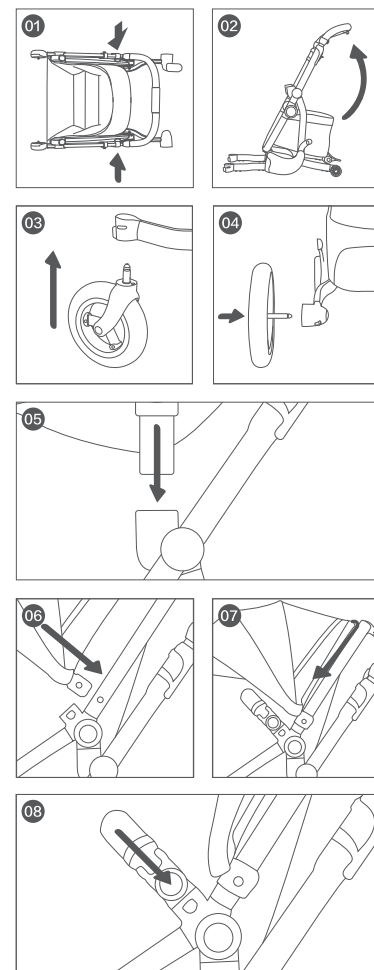


睡篮



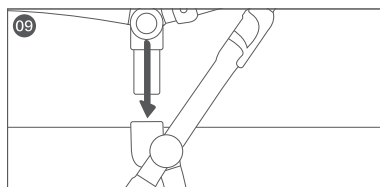
- 01 遮阳棚
- 03 前扶手
- 12 睡篮盖
- 13 睡篮

车台的展开及安装

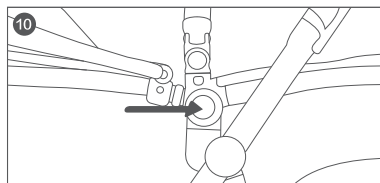


1. **展开**: 从外箱中取出车台，然后松开两侧的锁定装置（图①）。拉动手柄，听到咔嚓声时，婴儿车便打开（图②）。
2. **前轮安装**: 将前轮轴对准前轮座孔轻轻压下。并用力向下拉不可掉落即前轮安装完成(图③)。
3. **后轮安装**: 将后轮轴对后轮座孔插入，并用力向外拉不可拔出即后轮安装完成(图④)。
4. **座身安装**: 依（图⑤）的方式将座身连接杆对准固定座孔卡入即座身安装完成，并将整个座身向上抬起不会脱落，表示可以使用。
5. **装顶篷**: 如图将顶篷卡扣对准座身固定扣用力压下当听到“咔”的一声既安装完成，另一边重复以上动作（图⑥）完成安装后将顶篷拉链跟座身拉链拉好（图⑦）。
6. **前扶手安装**: 安装好座身及顶篷后将前扶手依图再安装在座身上（图⑧）。

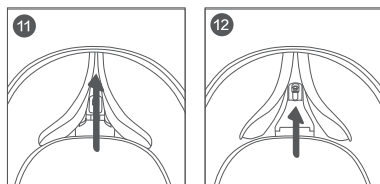
睡篮的安装及应用



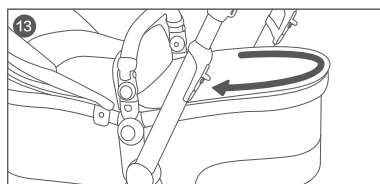
1. 安装: 从纸箱中拿出睡篮, 依图⑨的方式将睡篮连接杆对准固定座稍用力向下压, 压下后需两边同时往上提, 如提不起来则表示睡篮安装到位。



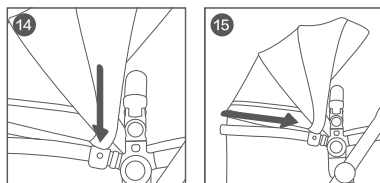
2. 拆卸: 如需取下睡篮, 依(图⑨)的方式用手握住睡篮管并用手的中指两边同时用力按下连接杆上的按钮将睡篮向上提起就可以将睡篮取下(图⑩)。



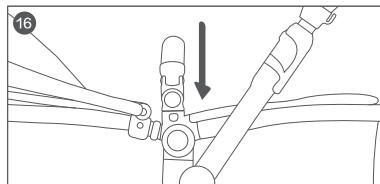
3. 睡篮使用: 将睡篮安装在车架上后, 先将睡篮内衬两端的拉链拉开(图⑪)并将睡篮两端支撑塑胶撑开(图⑫), 再拉好拉链, 将睡篮平整平铺在底部。



4. 睡篮盖: 将睡篮盖拉链拉到睡篮的另一端(图⑬)。



5. 睡篮顶篷安装: 先从座椅上拆下顶篷, 如图将顶篷卡扣对准睡篮固定扣用力压下当听到“咔”的一声既安装完成。另一边重复以上动作(图⑭), 完成安装后将顶篷拉链跟睡篮拉链拉好(图⑮)。

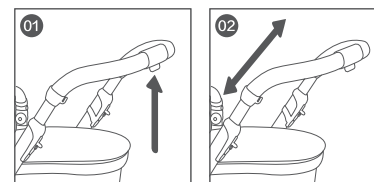


6. 睡篮扶手安装: 安装好座身及顶篷后将前扶手依图再安装在座身上(图⑯)。

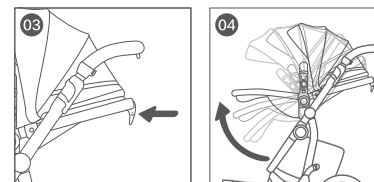


7. 注意: 睡篮头部放置在前轮处。使用时, 请确保婴儿面向推行者。

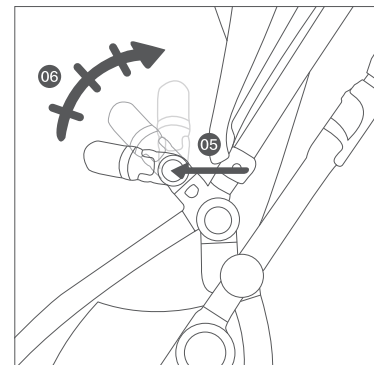
车台其他部件的安装及使用



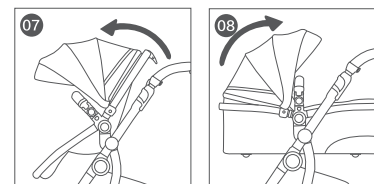
1. 手把伸缩调管的使用: 先用手握住伸缩按钮(图①), 同时向上提或向下压伸缩管调节到适合自己的档位时, 放开按钮即可完成调节。高度从高到低位有三档可调节(图②)。



2. 座椅调节: 用手将座椅调节按钮向上扳, 同时向上或向下转动座椅并放开按钮就可以调到自己理想的位置(图③)。依次有三档可调(图④)。

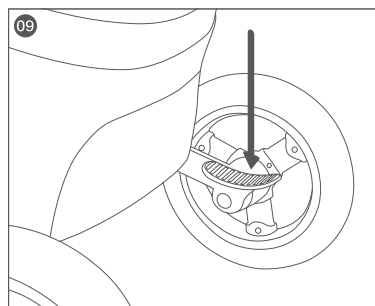


3. 前扶手调节: 如图用手握住扶手管两边用食指同时按住调节按钮(图⑤)。转动扶手就可进行3档调节(图⑥)。



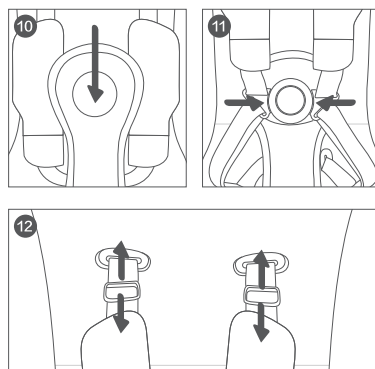
4. 顶篷调节: 将顶篷装在座椅(图⑦)或睡篮(图⑧)上。用手捏住顶篷前端并向前拉既可。

刹车的使用



刹车功能使用：用右脚踩在车台的刹车踏板后端，向后用力踩一下（需踩到位踩不动为止）即可自动刹车。解除刹车同样用脚踩在刹车踏板前段，用脚尖的力量将刹车踏板向前踩到位（踩不动为止）即可解除刹车（图9）。

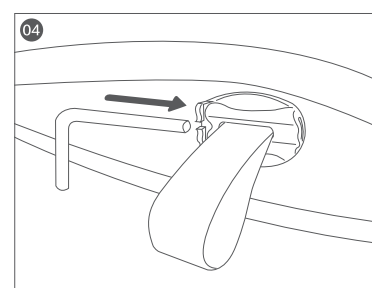
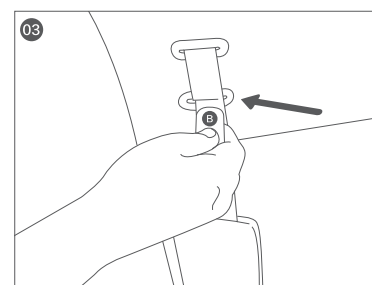
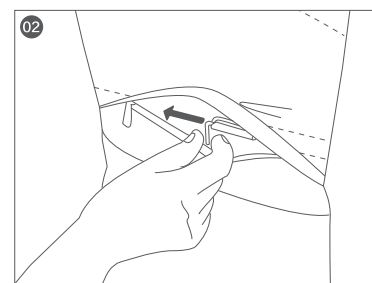
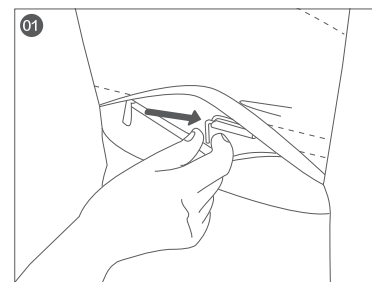
安全带的使用



1.安全带的使用：用手挤压安全扣中间的按钮使安全带完全解开（图10）。将儿童放置至座椅内，将扣具从两端插入，向两侧用力拉动不可脱离表示扣具已安装完成（图11）。

2.安全带长度的调节：先用手握住安全带上的日字扣，再用另一只手捏住安全带向下或向下推动，拉至平整既可将安全带调至需要的长度（图12）。

肩带档位调节

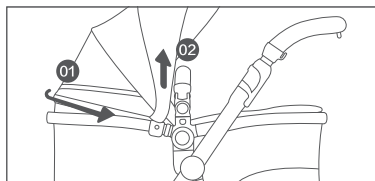


1.五点式安全扣肩带档位调节：
 本车肩带出厂设置为低档位，如要调节成高档位，请参照以下操作：拉开座椅背靠后面的拉链，取出L形调节铁销(A)后在前方拉出肩带。拉出肩带后，将L形调节铁销(A)恢复原位(图1)。 **注意：**L形调节铁销(A)不可丢弃，用于肩带高度调节锁定。

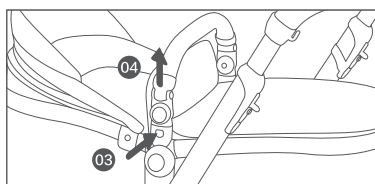
2.五点式安全扣低档位的调节与安装：调节成高档位之后，如您想要恢复成低档位，请参照以下操作：拉开座椅背靠后面的拉链，取下L形调节铁销A(图2)，在背靠前面将插片(B)放入肩带对折的中间，对准背靠低档位调节槽用力插入(图3)，然后从背部拉出肩带，用L形调节铁销(A)插入到对折肩带的U形缝隙内，再用力插入到背靠调节塑胶内底部(图4)，此时到座位前拉紧肩带，最后将座位背后的拉链拉合即完成安装。



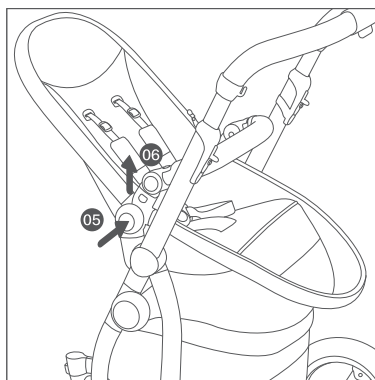
车台零部件的拆卸



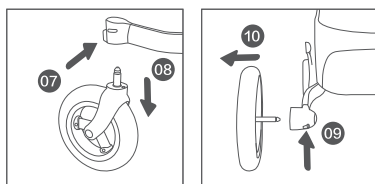
1.顶篷的拆卸：先将顶篷的拉链跟座椅或睡篮拉开分离(如图①)，用手将顶篷卡扣用力向外扳开并取下即可(图②)。



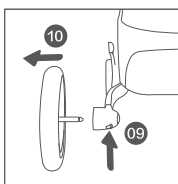
2.前扶手的拆卸：用手两边同时握住前扶手，用手的食指或中指同时按下扶手的拆卸键(图③)，向外稍用力就可将前扶手拆下(图④)。



3.座椅/睡篮的拆卸：用手先握住座椅或睡篮，用手的食指两边同时按下连接杆上的拆卸按键(图⑤)。用力向上提拉座椅或睡篮就可以拆卸(图⑥)。

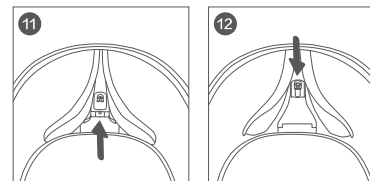


4.前轮拆卸：先用一只手按住前轮上的快拆按钮(图⑦)，另一只手捏住前轮稍用力向下拉既可将前轮拆下(图⑧)。

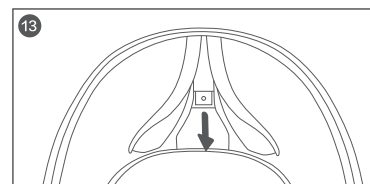


5.后轮拆卸：先用手的大拇指按住后轮上的快拆按钮(图⑨)，然后用另一只手将后轮往外拉既可将后轮拆下(图⑩)。

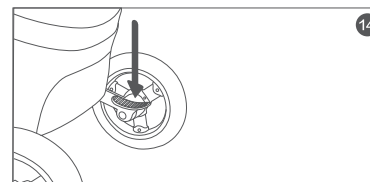
睡篮的收合



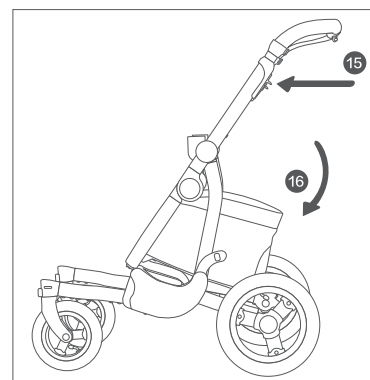
1.先依次拆下睡篮上的顶篷扶手，再拉开睡篮两端的拉链(图⑪)。



2.用手依次将提篮支撑两侧塑胶上的锁销向上拉起(图⑫)，同时用手把支撑塑胶向里面轻推就可以将睡篮折叠起来(图⑬)。

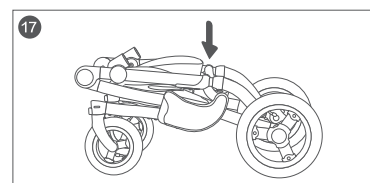


车台的收合



1.刹车：先用右脚踩刹车来锁定后轮(图⑭)。

2.下按和下压：再用双手握住手把管上的拉柄同时按下手柄上的锁定按钮(图⑮)，向后拉将手把向下压即可进行收车(图⑯)。



3.锁定并完成：完成收车后向下压即可自动锁定收车钩，收车完成(图⑰)。



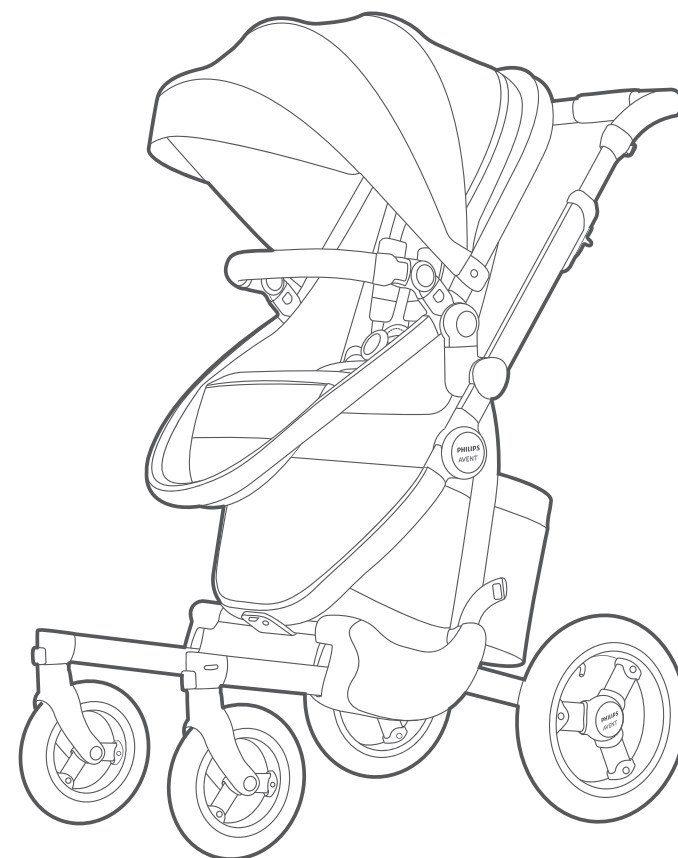
Manufacturer and seller: Babybell Maternal & Child Supplies (Shanghai) Co.Ltd.
Address: Room 7188, 7th Floor, No.348 Gongyuan Road, Qingpu District, Shanghai
Telephone: 4000-080-996
Email: philips.avent.babytravel@ibabybell.com

PHILIPS

AVENT

OIA

Baby stroller Installation manual



Please read the manual carefully before use,
and keep it in a safe place for future reference.

Contents

WARNING	02
Maintenance	03
Product parts	04
Sport seat	05
Bassinet	06
Opening and assembling the stroller	07
Assembling the bassinet	08
Installation and adjustment of parts	10
Brake	11
Safety belt	11
Disassembly of parts	12
Folding up the bassinet	13
Folding up the baby stroller	13

©2021 Babybell Maternal & Child Supplies (Shanghai) Co.Ltd. All rights reserved.

Philips Avent and the Philips Shield Emblem are registered trademarks of Koninklijke Philips N.V. and are used under license.

This product has been manufactured by and is sold under the responsibility of Babybell Maternal & Child Supplies (Shanghai) Co., Ltd., and Babybell Maternal & Child Supplies (Shanghai) Co., Ltd. is the warrantor in relation to this product.

WARNING

- **Please read the following instructions carefully and keep it with you for reference.**
- Not following the instructions could compromise the baby's safety.
- The baby stroller must be watched by the person in charge at all times.
- The sport seat is not suitable for babies under 6 months old.
- The product is not suitable for infants over 15 kg .
- The bassinet is only suitable for babies aged 0 – 6 months. Maximum carrying capacity is 9 kg .
- Please make sure that the brake is locked before using the baby stroller.
- Please don't fold the baby stroller while the baby is sitting in the stroller.
- Make sure that the baby is wearing the safety belt when sitting in the sport seat.
- Don't leave the stroller unattended on a slope.
- This product is not suitable for running or sliding.
- The maximum carrying capacity for the sport seat is 15 kg .
- Please don't put shopping bags or other heavy items on the baby stroller's handle to prevent the stroller falling over.
- Please don't disassemble or adjust any of the stroller's parts while the baby is in the baby stroller.
- Please keep plastic bags away from the baby stroller to prevent the baby from suffocating.
- Please don't use a thick cotton blanket more than 20 mm for the bassinet.
- The maximum carrying capacity for the two hooks on the handle is 1 kg .
- The storage basket under the seat has a maximum carrying capacity of 2.5 kg.
- Maximum air pressure of pneumatic tire 28P.S.I. (2.0 BAR).

Maintenance

- Regularly check whether the parts of the stroller are loose, missing, damaged. If necessary, please arrange replacement or maintenance according to the actual situation.
- The stroller should be kept away from fire sources or high-temperature heating objects.
- The cloth cover of this stroller cannot be bleached, tumble dried, ironed, or dry cleaned. Please use neutral soapy water and a soft cloth to clean the cloth cover, metal, leather and plastic surfaces.
- Please wipe the stroller gently. Do not use strong irritating or corrosive chemical liquids (such as any detergent, solvent or very strong soap) during the wiping process. Let dry after wiping. The stroller cloth cover cannot be washed directly in the water except for special parts.
- Do not disassemble the canopy for washing. Do not disassemble, move or change the cloth cover of the stroller or any structural parts of the five-point safety belt; Do not add any lubricant or other chemicals to the cloth cover or the five-point safety belt;
- The shoulder pad can be removed and washed separately. When washing, please wash by hand when the water temperature is below 40 degrees, and dry it flat. Do not iron, dry clean, and do not expose to the sun.

Cleaning instructions for special parts

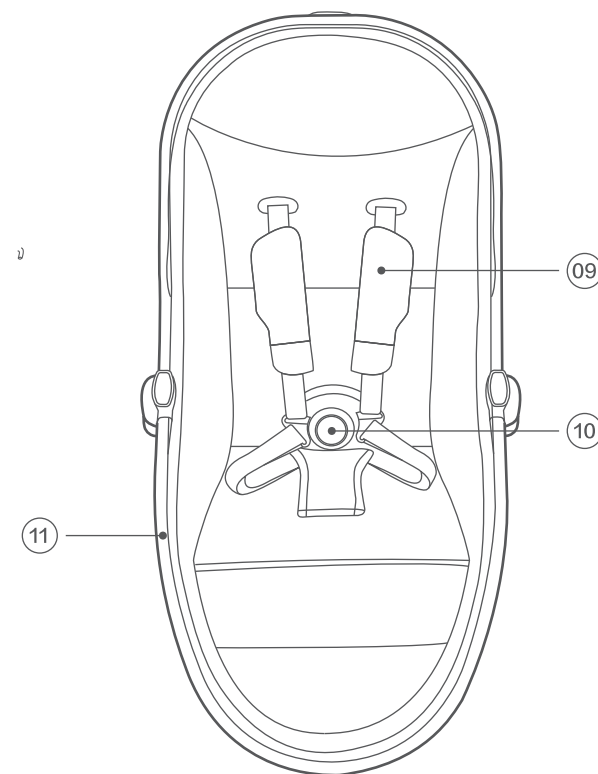
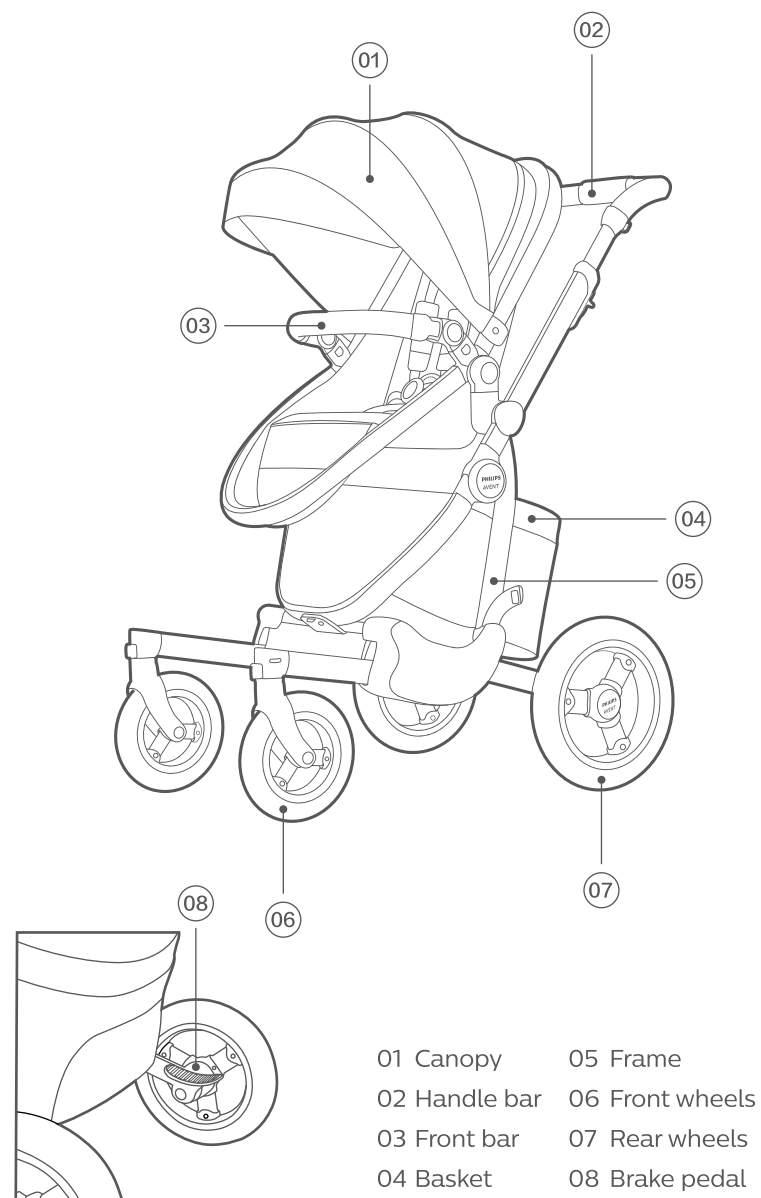
The shoulder pad and the bassinet cotton pad cover can be removed and washed separately. When washing, please wash by hand when the water temperature is below 40 degrees, and dry it flat. Do not iron, dry clean, and do not expose to the sun.

Technical Support

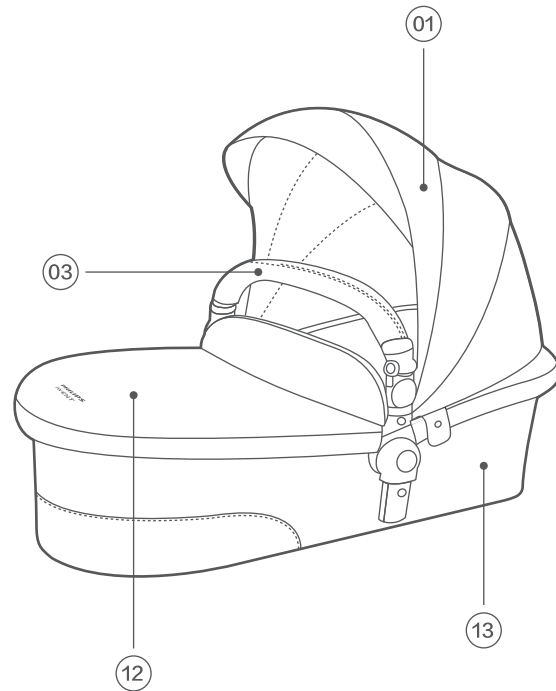
For details, please visit www.philips.com.cn/babytravel

Product parts

Sport seat

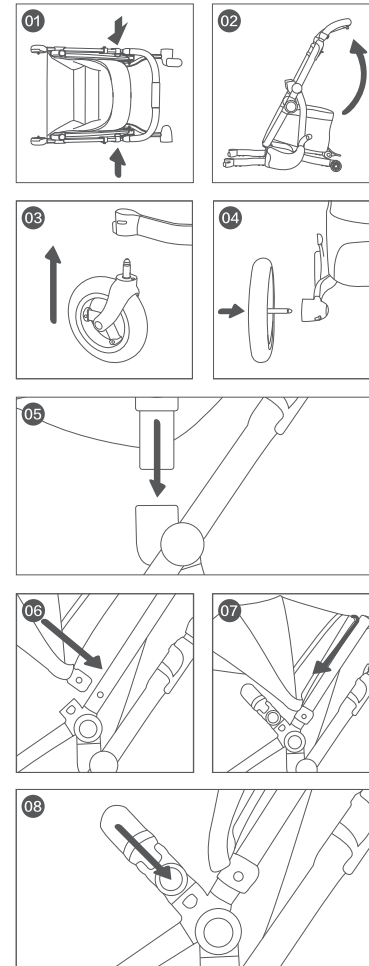


Bassinet



- 01 Canopy
- 03 Front bar
- 12 Bassinet cover
- 13 Bassinet

Opening and assembling the stroller



1.Open: Hold the frame outside and release the locking mechanism on both sides (01). Pull the handle. The stroller is open when you hear a clicking sound (02).

2.Front wheel: Put the small wheel on the axle. The wheel is attached when you hear a clicking sound (03).

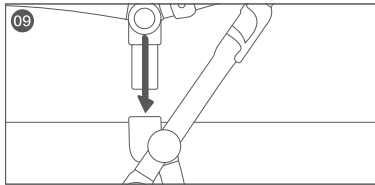
3.Rear wheel: Put the big wheel on the axle. The wheel is attached when you hear a clicking sound (04).

4.Seat: Push the connecting tube of the bassinet into the connecting hole of the stroller. A clicking sound ensures that both sides are fully engaged and secure. When this is done correctly, you should not be able to remove the bassinet when you lift this up.

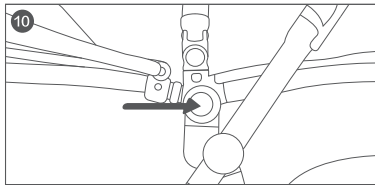
5.Canopy: Attach the canopy by pressing the canopy clip onto the seat frame's attachment pins (06). Repeat on the other side and close the zipper (07).

6.Front bar: Attach the front bar to the seat (08). Make sure the front bar is fully attached.

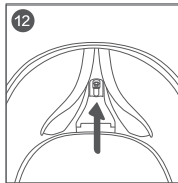
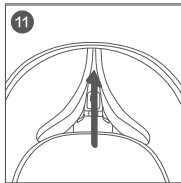
Assembling the bassinet



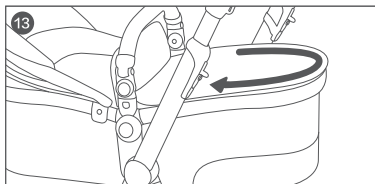
1.Assembly: Connect the bassinet's connecting tube into the frame's attachment (09). Make sure the bassinet is fully attached.



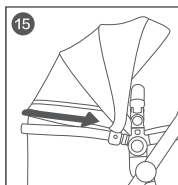
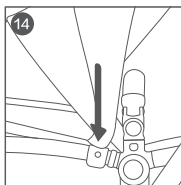
2.Remove: If you need to remove the bassinet, push the connecting buttons on both sides and lift up the bassinet (10).



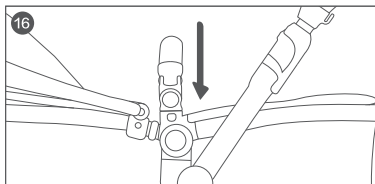
3.Open: Open the zippers inside the bassinet on both sides of the inner bassinet (11). Straighten up the supporting plastic at both ends of the bassinet. (12). Close the zipper on both sides. Put the mattress on the bottom of the bassinet.



4.Bassinet cover: Zip the cover onto the top of the bassinet (13).



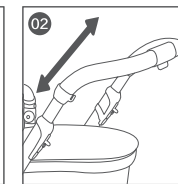
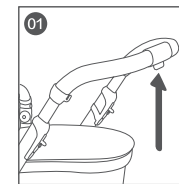
5.Bassinet's canopy: Attach the canopy by pressing the clip onto bassinet frame until you hear a clicking sound (14). Repeat the action on the other side. Once assembled, close the zipper between the canopy and bassinet (15).



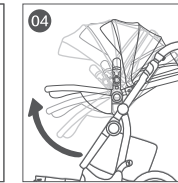
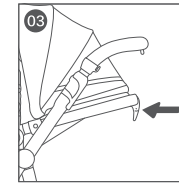
6.Front bar: Attach the front bar to the bassinet (16). Make sure the front bar is fully attached.

7.Note: The head part of the bassinet is placed above the front wheel side of the stroller. When using, please ensure that the baby faces the user.

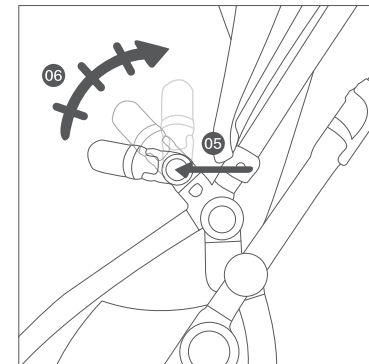
Installation and adjustment of parts



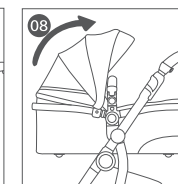
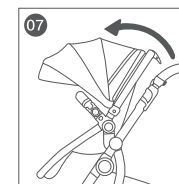
1.Handle bar: Push the button, pull out the handle bar, then release the button (01). This baby stroller has three different levels to adjust to your required height (02).



2.Baby sport seat: Push the lever on top of the sport seat (in the middle) (03). Adjust the seat to one of the three positions (04).

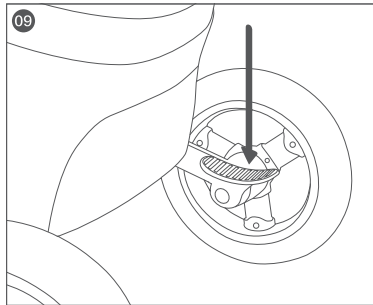


3.Front bar: Grab the front bar and press the buttons on the side using your forefingers (05). Push the front bar up or down (06). There are three positions.



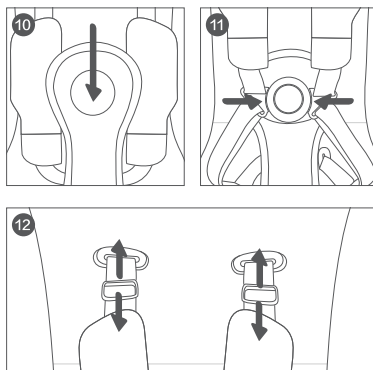
4.Canopy: It is possible to attach the canopy to the sport seat (07) or the bassinet (08). Just close the zipper and pull the canopy to the required position.

Brake



Using the brake: Use your right foot to step on the brake and lean backward. Both rear wheels are now locked. To release the brake, step on the lever again and step forward (09).

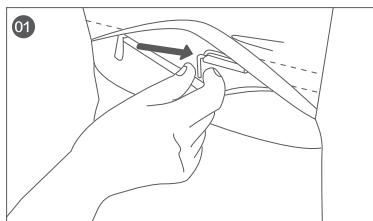
Safety belt



1. Using the safety belt: Press the button to release the safety belt (10). Sit the baby in the sport seat. Pull the two safety straps over the baby into the middle and insert the buckle tongues into the buckle until you hear a clicking sound (11).

2. Adjusting the belt lengths: Push or pull the slide buckle up or down until you reach the required length (12).

Shoulder strap position adjustment



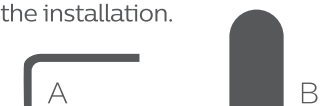
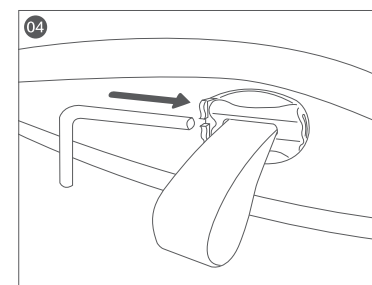
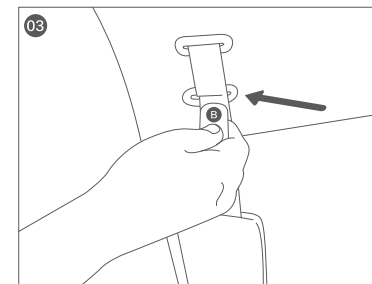
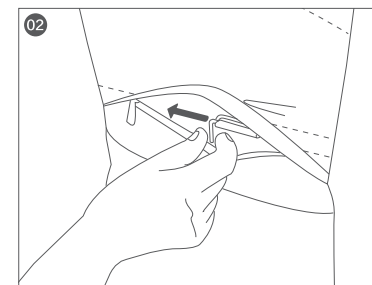
1. Five-point safety buckle shoulder strap position adjustment: The shoulder strap of this car is set to low position from factory. If you want to adjust it to high position, please perform the following operations:

Shoulder strap position adjustment

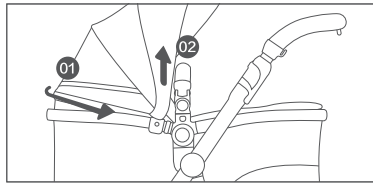
Unzip the zipper behind the seat back, take out the L-shaped adjusting iron pin (A) and pull out the shoulder strap in the front. After pulling out the shoulder strap, snap the L-shaped adjusting iron pin (A) into the adjusting plastic groove (Figure ①). Note: The L-shaped adjusting iron pin (A) cannot be discarded and is used for shoulder strap height adjustment and locking.

2. Adjustment and installation of the low position of the five-point safety buckle: After adjusting to the high position, if you want to return to the low position,

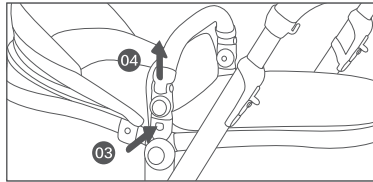
please perform the following operations: Unzip the zipper behind the seat back and take off the L-shaped adjusting iron pin (Figure ②). Place the insert (B) in the middle of the shoulder strap folded in half, align with the low position adjustment slot of the backrest and insert firmly (Figure ③). Then pull the shoulder strap from the back. Insert the L-shaped adjusting iron pin (A) into the backrest adjustment plastic, and insert it into the U-shaped gap of the folded shoulder strap at the same time, and then forcefully insert it into the inner bottom of the backrest adjustment plastic (Figure ④). Tighten the shoulder straps in front of the seat, and then close the zipper behind the seat to complete the installation.



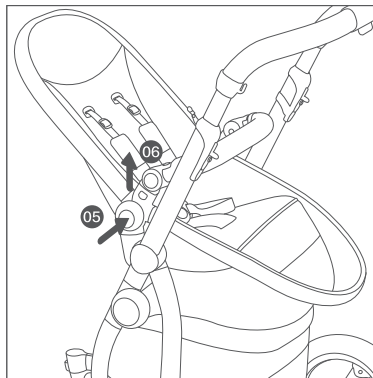
Disassembly of parts



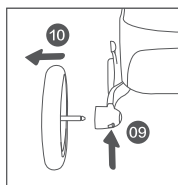
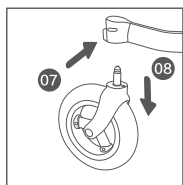
1.Canopy: Open the zipper between the canopy and seat or bassinet (01). Disconnect the attachment clips and remove the canopy from the sport seat or bassinet (02).



2.Front bar: Hold the front bar . Use your forefinger to press the semicircular connecting button (03). The front bar can be removed (04). Repeat on the other side.



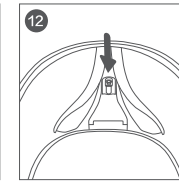
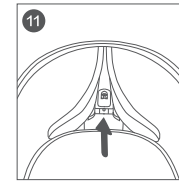
3.Sport seat /bassinet: Hold the sport seat/bassinet with both hands and use your forefinger to press the connecting button (05) on both sides, pull up and remove the sport seat/ bassinet (06).



4.Front wheel: Press the connecting button for the front wheel (07) and pull down the wheel (08).

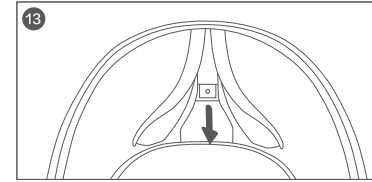
5.Rear wheel: Press the connecting button for the back wheel (09) and pull away the wheel (10).

Folding up the bassinet

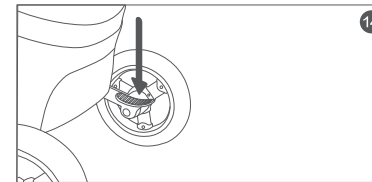


1.Remove the canopy and the front bar. Open the zipper on both sides of the bassinet (11).

2.To fold the bassinet up, grab the plastic part of the bassinet and pull up the lock (12).

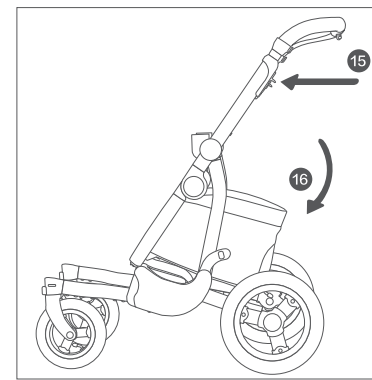


3.Push the plastic part of the bassinet inside (13). You can now fold the bassinet up.

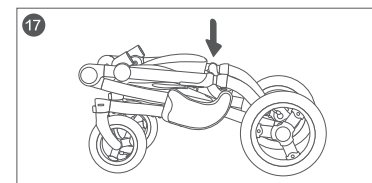


Folding up the baby stroller

1.Lock the rear wheels by stepping on the brake with your right foot (14).



2.Hold the handle bar on the left and right side and push in the small buttons using your forefingers. At the same time pull up the switch lever on both sides (15). Now the baby stroller can be folded up (16).



3.After folding up the baby stroller, lock the locking mechanism on both sides (17).



制 造 商：童音母婴用品（上海）有限公司
地 址：上海市青浦区公园路348号7层7188室
生产企业：天龙成婴幼儿用品（深圳）有限公司
地 址：深圳市龙岗区龙岗街道同乐社区浪背村工业
区路93号12#厂房1-4楼以及10#办公楼
电 话：4000-080-996
邮 箱：philips.avent.babytravel@ibabybell.com
网 址：www.philips.com.cn/babytravel