

PHILIPS

AVENT

RODA (莱达)

儿童安全座椅 安装使用说明书

组别：0+I/II/III组（0-36kg）

适合于0-12岁儿童

执行标准：GB27887-2011



使用前请务必阅读本说明书及产品上的警告标语

目录

重要提示	02
安装须知	04
产品零件	06
安装方式选择	08
适配须知	10
座椅安装	11
1.安装ISOFIX导向套	11
2.ISOFIX的安装与拆卸	12
3.头枕高度调节	13
4.旋转角度调节	13
5.五点式的安装与调节	13
6.小坐垫使用	14
7. 档位调节	15
8.上拉带的安装	15
9.婴儿模式-反向安装 (0-13kg)	16
10.幼儿模式-正向安装 (9-18kg)	16
11.上拉带的拆卸及隐藏	17
12.肩带隐藏与卡扣拆卸	18
13.学童模式-正向安装(15-36kg)	19

Philips Avent 和 Philips 盾牌图形是皇家飞利浦有限公司的注册商标，其使用需遵循皇家飞利浦有限公司的许可。

本产品由童音母婴用品（上海）有限公司负责生产和销售，童音母婴用品（上海）有限公司是本产品的担保人。

2021© 童音母婴用品（上海）有限公司保留所有权利。

重要提示

亲爱的客户：

非常感谢您购买飞利浦新安怡儿童安全座椅。型号：RODA（莱达）。我们向您保证，在汽车座椅的开发过程中，我们注重安全性、舒适性和用户友好性。该产品是在国家认证认可监督管理委员会CCC质量监督下生产的，符合最严格的安全要求。使用儿童座椅前请仔细阅读使用说明书，并妥善保管。

⚠ 警告：

- 1.反向安装时切勿把儿童座椅放置在配有安全气囊的位置上。
 - 2.在儿童体重超过9kg之前不可前向安装使用。
 - 3.不可以使用除标示出的以外的其他任何受力点。
 - 4.在行车状态时，座椅不能侧向使用，不能旋转方向。
 - 5.对于ISOFIX型式的儿童约束系统，在约束系统的说明书中应要求使用者阅读汽车制造商手册中有关ISOFIX固定点的说明。
- 0+ 组 (0-13kg) 后向安装和 I 组 (9-18kg) 前向安装时，使用ISOFIX 上拉带固定，为 ISOFIX半通用类。

注意

- 1.这是ISOFIX儿童约束系统。符合GB 27887-2011。用于装有ISOFIX固定装置的车辆。
- 2.该系统依据儿童约束系统的类别和固定装置的种类，安装在ISOFIX固定的位置（按照车辆手册的描述）。
- 3.打算安装的ISOFIX儿童约束系统适合的质量组及ISOFIX尺寸类别为：0-13kg D类，9-18kg B1类。

车型	前排	后排	
		外侧	中间
(见车型适配表)	②	是	否
其他的汽车座椅位置也可能适合安装此约束系统。如有疑问，请咨询儿童约束系统制造商或零售商。			

② 儿童安全座椅不能放置在前排有安全气囊的乘客座位上使用。

⚠ 重要：

- 1.反向安装时切勿把儿童座椅放置在配有安全气囊的位置上。
 - 2.在儿童体重超过9kg之前不可前向安装使用。
- II 组(15-25kg)、III 组(22-36kg)使用FIX+汽车安全带固定时为半通用类，此儿童约束系统符合半通用类应用，适合安装此种状态下的汽车座椅位置：

车型	前排	后排	
		外侧	中间
(见车型适配表)	②	是	否
其他的汽车座椅位置也可能适合安装此约束系统。如有疑问，请咨询儿童约束系统制造商或零售商。			

② 儿童安全座椅不能放置在前排有安全气囊的乘客座位上使用。只在适用车型配备了通过GB 14166或ECE R16要求的腰带/3点式/简易/带卷收器的安全带情况下才适用。

安装前须知

⚠ 为了您孩子的乘车安全，请严格按照说明书进行正确安装和使用！

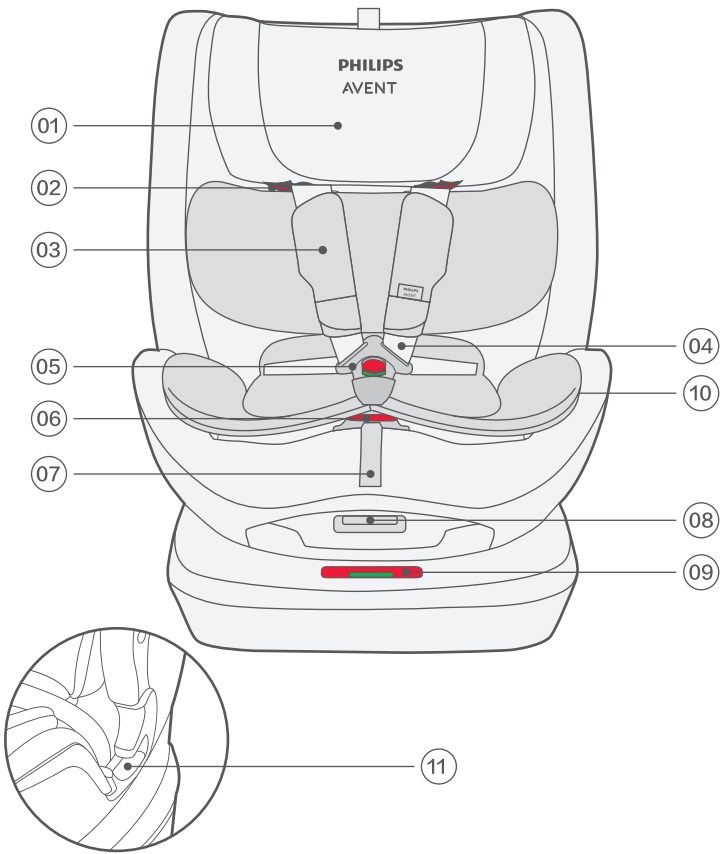
- 在使用儿童安全座椅之前，请仔细阅读说明书，并按照此说明书进行正确安装使用儿童安全座椅，否则不当安装将会导致安全隐患。生产商不承担任何因不当使用产生的责任。
- 请细心保管好您的说明书手册，以备日后查阅使用。
- 本儿童安全座椅适用于0+组，I组，II组，III组，体重(0kg-36kg)的儿童。
- 严禁将此儿童安全座椅安装在装有安全气囊的汽车座位上。
- 在宝宝体重超过9kg之前，请勿前向使用（参阅使用说明书）。
- 儿童安全座椅应该远离腐蚀性物品。

- 1.儿童安全座椅的刚性部件和塑料部件应正确放置和安装，才能使他们在正常的车辆使用中，确保儿童安全座椅不被车里的活动座椅或门卡住。
- 2.不要把任何重物放在靠近窗户的架子上，一旦发生意外，这些重物会成为危险的抛射物。
- 3.定期检查汽车座椅的不同部件。特别是系统和卡扣必须定期检查，以确定是否接近撕裂或可能损坏。
- 4.只使用制造商批准的儿童安全座椅和原始配件，不要修改产品！
- 5.如有任何零件损坏或遗失，切勿使用儿童约束系统。请与制造商或零售商联系。
- 6.不得使用除说明文件描述的或者儿童约束系统上标识的任何其他受力点。
- 7.每次行程前，检查ISOFIX连接器是否连接到车辆上，并相应地调整上拉带。确保儿童安全座椅正确地固定在汽车座椅上。上拉带应与车辆接口正确安装，确保显示绿色。
- 8.即使是短途旅行，也需要儿童座椅，避免随时发生事故。

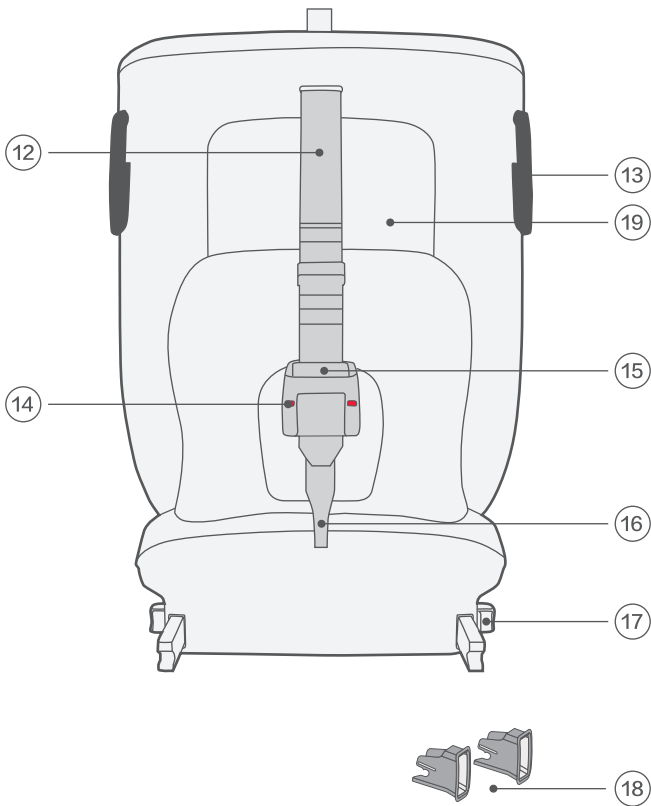
- 9.使用没有认证许可的产品和经过改装的产品是危险的，并且附近没有制造商提供的安装说明也是很危险的。
- 10.夏季或烈日下停车，请盖好儿童安全座椅避免阳光猛烈照射，以免发烫的儿童安全座椅灼伤孩子皮肤。另外阳光直射会引起面料褪色。
- 11.切勿将儿童在无人照看的情况下放置在儿童安全座椅内。
- 12.认真地告诉您的孩子，在使用儿童安全座椅的过程中禁止玩安全卡扣确保安全带插扣完全锁定，如发生紧急情况，可快速松开儿童。
- 13.如果出现急刹车情况或发生事故，未正确固定好的安全座椅和乘坐儿童可能会对车内其他人员造成伤害。为此，请随时检查。
- 14.在碰撞事故中易造成伤害的行李和物品应被妥善安放。
- 15.开车时请系好安全带，为您的孩子做个好榜样。长途旅行中适当安排中途休息，给您的孩子放松的时间。
- 16.儿童约束系统的每条与车辆连接的织带应系紧。约束儿童的织带应根据儿童的身体进行调整。织带不得扭曲。
- 17.腰带佩戴时请向下放低，确保能很好的约束孩子骨盆位置。
- 18.请不要使用没有面套的儿童安全座椅。
- 19.请不要使用除制造商推荐的材料以为的其他材料的座椅面套，不当的面套材料会影响安全座椅总体的安全性能。
- 20.若成人安全带相对于儿童约束系统的主要受力点为止互相干涉，则不可使用。如对此点有疑问的话，请与儿童约束系统制造商联系。发生车祸后，儿童安全座椅会存在安全隐患，请立即更换新的安全座椅！如果您希望保修更换或其他任何问题，请联系我们。
- 21.对于ISOFIX型式的儿童约束系统，在约束系统的说明书中应要求使用者阅读汽车制造商手册中有关ISOFIX固定点的说明。

产品零件

产品图片仅供参考



- 01 头枕
- 02 上安全带导向槽 (X2)
- 03 肩带垫 (X2)
- 04 肩带 (X2)
- 05 卡扣
- 06 安全带调节器
- 07 调节拉带
- 08 座椅角度调整拉手
- 09 座椅旋转按钮
- 10 坐垫
- 11 下安全带导向槽 (X2)



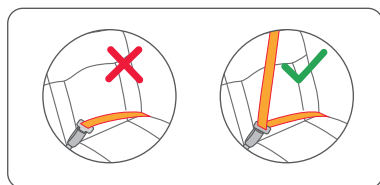
- 12 上拉带
- 13 侧面导向槽(x2)
- 14 上拉带安装显示
- 15 上拉带调节装置
- 16 上拉带固定钩
- 17 ISOFIX 调节按钮(x2)
- 18 ISOFIX 导向套(x2)
- 19 说明书储存盒

安装方式选择

体重	安装模式	安装图示	参考年龄	座椅档位	小坐垫使用说明
≤13kg	婴儿模式		0-15 个月	后向安装 1-3 ① ② ③	宝宝在 0-10kg 时需要使用小坐垫
9-18kg	幼儿学步模式		9 个月 -4 岁	前向安装 1-3 ① ② ③	宝宝在 10-36kg 时请勿使用小坐垫
15-36kg	学童模式		3-12 岁	前向安装 3 ①	宝宝在 10-36kg 时请勿使用小坐垫

⚠ 在宝宝体重低于9kg之前，不要向前使用。

适配须知



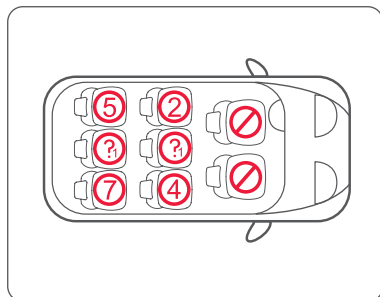
⚠ 警告：不能与两点式安全带一起使用。请用三点式安全带安装。

- 请遵守适用于您所在国家的规定。
- 安全带必须通过CCC认证。
- 不能与两点式安全带一起使用。
- 可以使用，如果汽车座椅配备了三点式安全带。



⚠ 此种状态（90°）下，禁止在行驶过程中使用。

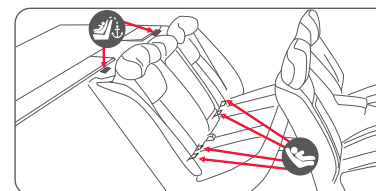
您可以使用您的儿童汽车座椅如图：



⚠ 注意：不能安装在前排有安全气囊的乘客座位上。

1: 适用于配备通过GB14166或ECE R14要求的ISOFIX系统的车型和配备了通过GB14166或ECE R16要求的三点式/带卷收器的安全带情况下才适用。

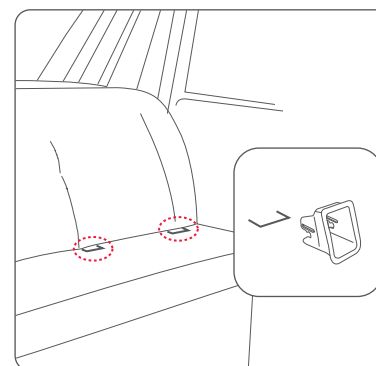
座椅安装



使用ISOFIX前，确保您的车型是否为标准接口(请阅读您汽车制造商手册中有关ISOFIX固定点的说明)。

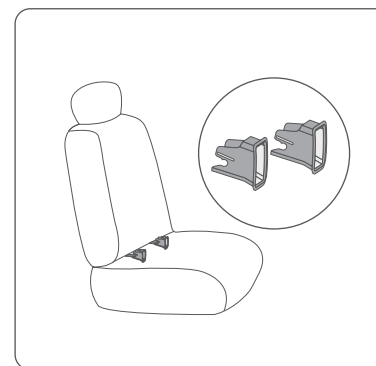
汽车座椅上备有ISOFIX固定锚点和ISOFIX尺寸类别相匹配，方可使用。

1. 安装ISOFIX导向套18

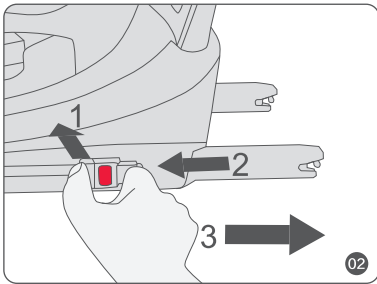


ISOFIX导向套18可帮助识别车辆的ISOFIX锚点并简化安装。它们还可以帮助保护您的汽车座椅。

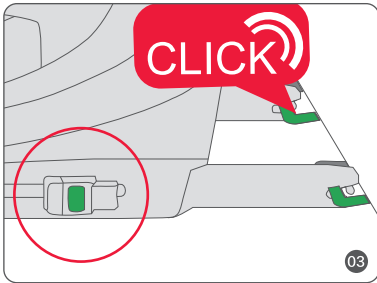
将两个ISOFIX导向套18插入车辆配备的ISOFIX锚点的位置上，使其钩到车辆ISOFIX锚定点上（图1）。



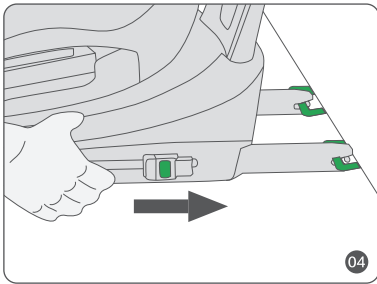
2.ISOFIX的安装与拆卸



1.两指捏住左右两侧ISOFIX调节按钮17分别往外拉安全座椅底座两侧的ISOFIX接口装置，拉到伸出状态为止（如图2）。

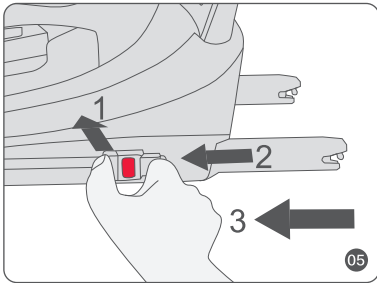


2.分别将左右的ISOFIX连接装置对准ISOFIX导向套插入汽车上的ISOFIX固定接口，直到两边都锁住为止，听到咔咔声，即为两边都锁定（如图3）。



3.两手按住底座前端，往汽车椅背方向推动底座，使底座与汽车座椅背靠完全贴合（如图4）。

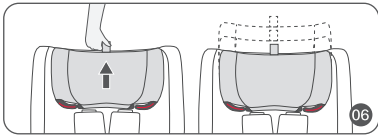
⚠注意:只有当左右两边ISOFIX标识出现绿色时才表明ISOFIX连接器已锁止。



4.用双手分别捏住两侧的ISOFIX连接器，一指往内推后在压紧ISOFIX调节按钮17，即可解锁。（如图5）

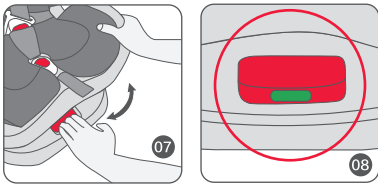
5.如果不需要使用座椅时,同样两指分别捏住左右两侧ISOFIX调节按钮17然后往里拉(箭头所示)即可收回ISOFIX连接器。

3.头枕高度调节



向上拉头枕调节拉带，使头靠与肩带同步上移。下压头靠，头靠与肩带同步下移。上下调整使之适合于儿童的头部（如图6）注意：在调整头靠高度之前，请先松开安全带。

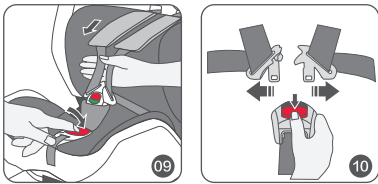
4.旋转角度调节



把安全座椅固定在汽车上后，一只手拉住座椅旋转按钮09，一只手旋转椅身，直至椅身调节至正确的安装方向。（如图7）

检查旋转按钮是否显示为绿色，绿色即为座椅已被锁定（如图8）。提示：90度角度时，绿色并不会显示

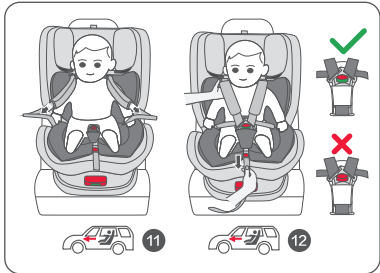
5.五点式的安装与调节



①一只手按住安全带调节器06，另一只手拉住肩带04往下拉，使其处于松弛状态。（如图9）

②按一下卡扣05红色的释放按钮，将肩带和卡扣分开，然后把左右肩带分别放置在座椅两侧。（如图10）

7. 档位调节



③把宝宝放入座椅内，注意背部尽量贴紧座椅靠背。将肩带04和肩垫03放置在宝宝的肩部，宝宝的腿分别放在五点式卡扣05的两侧。(如图11)

④将卡扣左右插片合起来，插入卡扣05，听见“咔嚓”声，同时卡扣按钮视窗显示为绿色，卡扣即为锁定。(如图12)

⑤按图示箭头方向拉动调节拉带07，确保头枕的底部与儿童的肩部齐平或略高于儿童的肩部。配合宝宝身形，使得孩子可以安全的固定。(如图12)

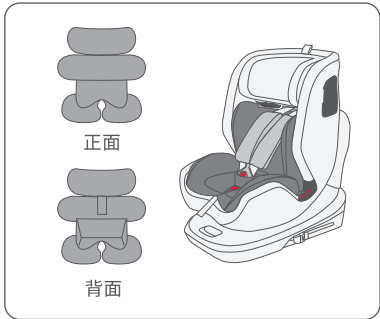
⚠ 将宝宝放入儿童安全座椅后，请确认肩带高度是否调整到适合位置。

⚠ 确保宝宝与肩带之间须可以放一个手掌的厚度。

6. 小坐垫使用

当孩子体重在0-10kg内，请使用小坐垫。

当孩子体重 > 10kg时，请移除小坐垫。



反向安装0+组
(0-13kg): 1~3
档



正向安装I组
(9-18kg): 1~3
档



II/III组
(15-36kg):
3档



按压档位角度调整手把08，即可滑动儿童安全座椅本体，将座椅角度调整到合适段位。(如图14、15)

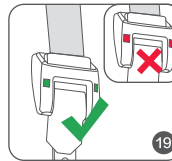
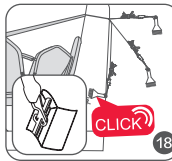
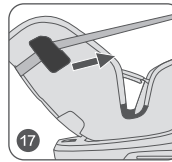
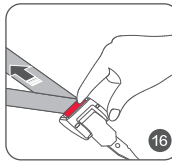
⚠ 婴儿模式有3段，如角度标示第1-3段，以蓝色圆标示。

⚠ 幼儿学步模式有3段角度调整模式，如角度标示第1-3段，以红色圆标示。

⚠ 学童模式仅用1段角度调整。

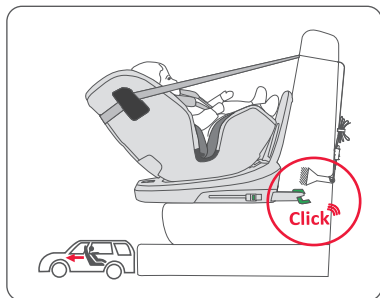
角度标示：上三角标记与下圆标对齐。

8. 上拉带的安装



按住上拉带调节按钮15，将其延伸到所需的长度（如图16）。然后将其穿过侧面的导向槽13（如图17），并将上拉带穿过儿童安全座椅头靠中间，连接到对应的挂钩上，参照汽车制造商手册里建议的上拉带固定点上（如图18）。拧紧顶部系绳，显示绿色为正确固定（如图19），确保上拉带处于张紧状态。

9. 婴儿模式-反向安装 (0-13kg)



⚠ 请先将儿童安全座椅角度调整合适位置，后向共有3档（第1-3档）

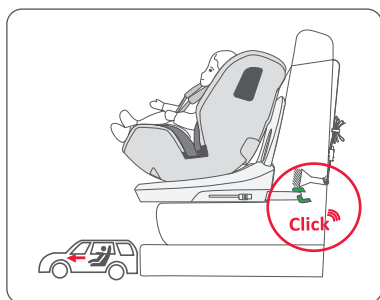
⚠ 角度标示：上方蓝色三角标记对齐蓝色圆标记。

⚠ 安装儿童安全座椅前，请确认肩带高低已调整至适当位置。

⚠ 安装fix锁时，须确保左右两边ISOFIX标识出现绿色，ISOFIX连接器锁定。

按照1-8的步骤正确安装座椅

10. 幼儿模式-正向安装 (9-18kg)

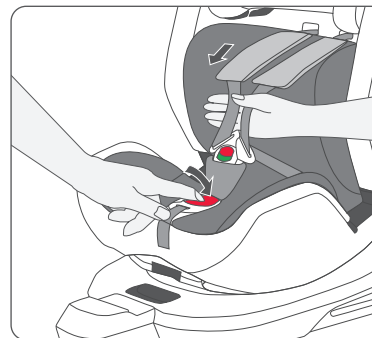


⚠ 请先调整好儿童安全座椅的角度，前向共有3档（第1-3档）。

⚠ 角度标示：上方红色三角标记对齐红色圆标记。

⚠ 安装儿童安全座椅前，请确认肩带高低已调整至适当位置。

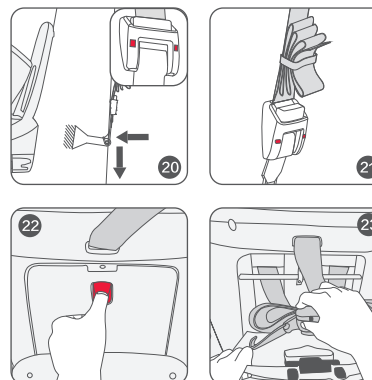
⚠ 安装fix锁时，须确保左右两边ISOFIX标识出现绿色，ISOFIX连接器已锁止。



⚠ 安装汽车安全带时，须注意汽车安全带肩带和腰带都不可扭曲或妨碍汽车安全带的正常功能。

按照1-8的步骤正确安装座椅

11. 上拉带的拆卸及隐藏

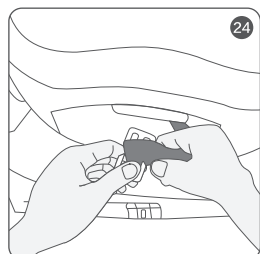


① 先向内推上拉带调节装置15释放拉带松紧度，然后向内按压上拉带固定钩16顶部挂钩并将其取出。解锁时上拉带安装显示14为红色（如图20）。

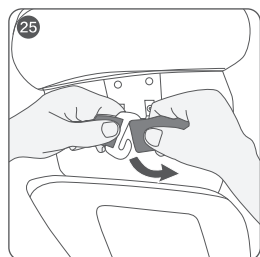
② 将安全带折成扇形并将其固定（如图21）。

③ 打开说明书储存盒19，将上拉带放入其中，然后盖好（如图22-23）。

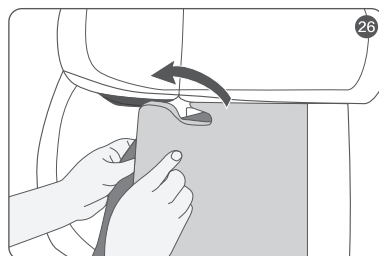
12. 肩带隐藏与卡扣拆卸



①. 将座椅旋转90°至最大档位，然后从座椅底部的扣锁连接器上滑下并拆卸卡扣05。（如图24）



②. 打开儿童汽车座椅后部的说明书储存盒19，将肩带垫03从座椅后部的锁定连接器上滑下，解开胸垫的扣子并取下。（如图25）

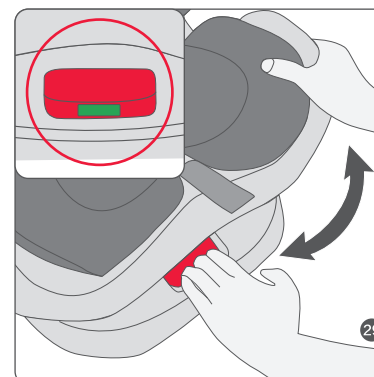
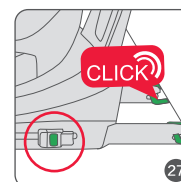


③. 将安全带放在儿童汽车座椅后面的垫子下面。（如图26）

13. 学童模式-正向安装(15-36kg)

1. 安装方式: 三点式安全带+fix

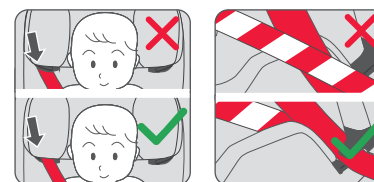
⚠ 将儿童安全座椅的角度调节到红色三角箭头对应红色圆标1档，本模式不可调至其他档位使用。



①. 把安全座椅放在汽车上，安装好ISOFIX连接器(x2)，确保儿童安全座椅被牢固安装无摇晃。（如图27）

②. 拉住座椅旋转按钮09旋转至前向状态，确认座椅已经锁定，如图所示。然后把汽车安全带穿过上安全带导向槽02和下安全带导向槽11，最后扣入汽车安全带卡扣，适当拉紧车载安全带，确保座椅牢固安装。（如图28、29）

⚠ 儿童安全座椅的每条与车辆连接的织带应系紧，约束儿童的织带应根据儿童身体进行调整，织带不得扭曲。



关于布套

感谢您购买飞利浦新安怡品牌RODA（莱达）汽车儿童安全座椅！

- 本说明书采用的插图是为了说明产品的操作方法和产品结构，当实物与图存在少量差异时，请以实物为准。
- 为了改良产品的品质，在没有予以告知的情况下，我们可能更改产品的部分结构和外观，请谅解。

汽车儿童安全座椅使用中的常见问题及维护！您在使用中发现汽车安全带太短，有以下解决方法。

- 请尝试在不同的座位上使用。
- 将汽车的座椅向后调节。
- 假如您汽车的安全带可以调节,请调到较低且合适的位置。
- 请将安全带中松弛的地方拉平。

假如您使用中发现汽车安全座椅无法放平;请尝试在汽车不同位置上放置。定期检查是否有零件磨损或损坏。如果发现零件损坏，请不要使用。

搭扣

- 食物、饮料或其它残渣可能积留在搭扣内，请用温水清洗。搭扣功能正常时，可以听到“喀哒”声。

安全带和塑胶件

- 用温水和中性肥皂擦净。

技术支持

- 详情请登录 www.philips.com.cn/babytravel

- 请勿拆卸布套后使用本产品。
- 布套可以拆洗，但我们不建议您经常拆卸布套。一旦您拆洗布套，请务必按原结构重新安装，并确定没有少装或错装任何部件。
- 清洗布套时请用肥皂和温水轻轻擦洗，请不要使用任何清洁剂、溶剂或药性很强的肥皂。
- 请勿拆卸、移动或改变汽车儿童安全座椅的布套或安全带系统的任何结构、部件，请勿在布套、安全带系统上添加任何润滑剂或其它化学物品。肩护套和胯护套在清洗时请在水温40度以下手洗，平铺晾干。
- 请勿干洗、转筒式干燥，并远离强光照射。

主要成分
座椅套外层: 涤纶 填充物: 海绵
单独清洗,最高不超过40℃水温手洗。 不可漂白,平铺晾干,不可翻转干燥。 不可熨烫,不可干洗


使用注意事项

- 使用本产品前,请仔细阅读您汽车的使用说明书。
- 请保管好本说明书，以便于反复查阅。
- 本产品要求您的汽车安全带为三点式牵引型安全带。
- 如果您的汽车上装有安全气囊，请谨慎使用。
- 请勿购买二手或转让本类产品。
- 请不要将本产品放在高处。
- 禁止使用非生产商提供的附件。



Manufacturer and seller: Babybell Maternal & Child Supplies (Shanghai) Co.Ltd.
Address: Room 7188, 7th Floor, No.348 Gongyuan Road, Qingpu District, Shanghai
Telephone: 4000-080-996
Email: philips.avent.babytravel@ibabybell.com

PHILIPS

AVENT

RODA

Child car seat Instruction manual

Group: 0+//II/III group (0–36kg)
Suitable for children aged 0–12



Failure to follow the warnings on the labels and in the instruction manual can result in the death or serious injury of your child.

Table of contents

Important information	02
Warning	03
Product parts	06
Installation method selection	08
Suitability	10
Seat installation	11
1.ISOFIX guide sleeves installation	11
2.ISOFIX installation and removal	12
3. Headrest height adjustment	13
4. Rotation angle adjustment	13
5. Installation and adjustment of 5-point safety belt	13
6. Use of small cushion	14
7.Adjusting seat reclining angle	15
8. Installation of the top tether	15
9.Baby mode-rearward installation (0-13kg)	16
10. Toddler mode-forward installation (9-18kg)	16
11. Disassembly and hiding of the top tether	17
12. Shoulder strap hiding and buckle removal	18
13. School children mode-forward installation (15-36kg)	19

©2021 Babybell Maternal & Child Supplies (Shanghai) Co.Ltd. All rights reserved.

Philips Avent and the Philips Shield Emblem are registered trademarks of Koninklijke Philips N.V. and are used under license.

This product has been manufactured by and is sold under the responsibility of Babybell Maternal & Child Supplies(Shanghai) Co., Ltd., and Babybell Maternal & Child Supplies(Shanghai)Co., Ltd. is the warrantor in relation to this product.

Important information

Dear customer:

Thank you very much for purchasing Philips Avent child safety seat (model: RODA).

We assure you that in the development of car seats, we focus on safety, comfort and user-friendliness. This product is produced under special quality supervision and meets the most stringent safety requirements. Please read the instruction manual carefully before using the child seat and keep it properly.

⚠ Warning: 1. Do not place the child safety seat in a position with an airbag during rearward installation. 2. Do not use forward installation until the child's weight exceeds 9kg. 3. Do not use any stress points other than those indicated. 4. When driving, the safety seat cannot be used sideways and cannot be rotated.

Group 0+ (0–13kg) rearward facing and group I (9–18kg) forward facing installed with ISOFIX and top tether fixture is classified as ISOFIX Child Restraint System.

NOTICE:

1. This is an ISOFIX child restraint system. It is approved to GB 27887–2011 for general use in vehicles fitted with ISOFIX anchorages systems.
2. It will fit vehicles with anchors indicated as ISOFIX positions (as detailed in the vehicle handbook), depending on the category of the child seat and of the fixture.
3. The mass group and the ISOFIX size class for which this safety seat is intended is: 0–13Kg D, 9–18Kg B1.

CAR MODEL	FRONT	REAR
(Suitable for all ISOFIX car models)	(No)	Outer(✓) Centre(No)

Seat positions in other cars may also be suitable to accept this child restraint. If in doubt, consult either the child restraint manufacturer or the retailer.

⚠ Important: Do not place the child safety seat in a position with an airbag during rearward installation.

Group II (15–25kg), Group III (22–36kg) with vehicle 3 point belt + FIX is classified as semi-universal.

NOTICE:

This child restraint system complies with semi-universal applications and is suitable for installation in the following car seat positions:

CAR MODEL	FRONT	REAR
(Suitable for all ISOFIX car models)	(No)	Outer(✓) Centre(No)

Seat positions in other cars may also be suitable to accept this child restraint. If in doubt, consult either the child restraint manufacturer or the retailer.

⚠ Important: Do not place the child safety seat in a position with an airbag during rearward installation. Only applicable to models equipped with three-point/retractor seat belts that meet the requirements of GB14166 or ECE R16.

WARNING

⚠ For the safety of your child, please strictly follow the instructions for correct installation and use!

- Before using the child safety seat, please read the instructions carefully, install and use the child safety seat correctly in accordance with this instruction, otherwise improper installation will cause safety hazards. The manufacturer does not assume any responsibility arising from improper use.
- Please keep your manual carefully for future reference.
- This child safety seat is suitable for children of group 0+ , group I, group II, group III, weight (0kg–36kg).
- It is strictly forbidden to install this safety seat on a car seat equipped with an airbag.

WARNING

- Before the baby weighs more than 9kg, do not use forward installation (refer to the instruction manual).
 - Child safety seats should be kept away from corrosive materials.
1. The rigid parts and plastic parts of the child safety seat should be placed and installed correctly so that they can be used in vehicles and ensure that the child safety seat is not jammed by the movable seat or door in the car.
 2. Do not put any heavy objects on the shelf near the window. In the event of an accident, these heavy objects will become dangerous projectiles.
 3. Regularly check the different parts of the safety seat. In particular, the harness system and the buckle must be checked regularly to determine whether it is close to tearing or possible damage.
 4. Only use child safety seats and original accessories approved by the manufacturer, do not modify the product!
 5. If any parts are damaged or missing, do not use the child restraint system. Please contact the manufacturer or retailer.
 6. Do not use any other stress points other than those described in the instruction manual or marked on the child restraint system.
 7. Before each trip, check whether the ISOFIX connector is connected to the vehicle, and adjust the top tether accordingly. Make sure that the child safety seat is properly secured to the car seat. The top tether should be installed correctly with the vehicle interface to ensure that it displays green.
 8. Even for short trips, child safety seats are needed to avoid accidents at any time.
 9. It is dangerous to use products without certification and modified products, and it is also very dangerous if there is no installation instructions provided by the manufacturer nearby.
 10. When parking in summer or under the scorching sun, please cover the child safety seat to avoid violent sunlight, so as to prevent the hot child safety seat from burning the child's skin. In addition, direct sunlight will cause the fabric to fade.

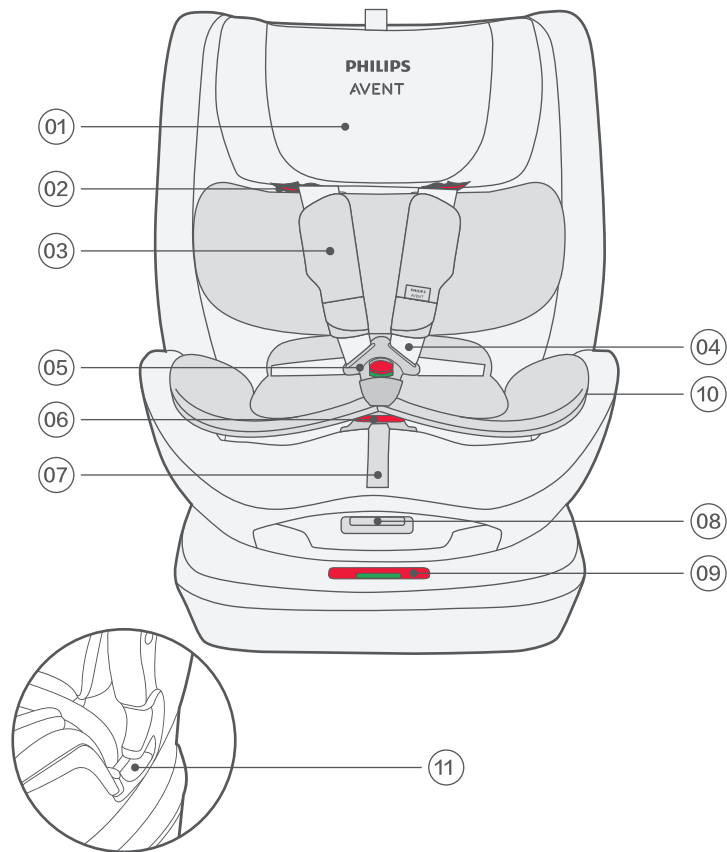
11. Never put children in child safety seats without being looked after.
12. Seriously tell your child that it is forbidden to play with the safety buckle during the use of the child safety seat to ensure that the seat belt buckle is completely locked. If an emergency occurs, the child can be released quickly.
13. In the event of sudden braking or accidents, improperly fastened safety seats and children may cause injury to other people in the car. For this, please feel free to check.
14. Baggage and articles that are likely to cause injury in a collision accident should be properly placed.
15. Please fasten your seat belts when driving and set a good example for your children. Arrange appropriate breaks during long-distance travel to give your children time to relax.
16. Each webbing of the child restraint system connected to the vehicle should be fastened. The webbing that restrains children should be adjusted according to the child's body. The webbing must not be twisted.
17. When wearing the waist belt, please lower it down to ensure that the child's pelvic position can be well restrained.
18. Please do not use child safety seats without covers.
19. Please do not use seat covers made of materials other than those recommended by the manufacturer. Improper cover materials will affect the overall safety performance of the safety seat.
20. If the adult seat belt interferes with the main stress point of the child restraint system, it cannot be used. If you have any questions about this, please contact the manufacturer of the child restraint system.

After a car accident, child safety seats may have safety hazards. It is recommended to replace with new safety seats immediately!

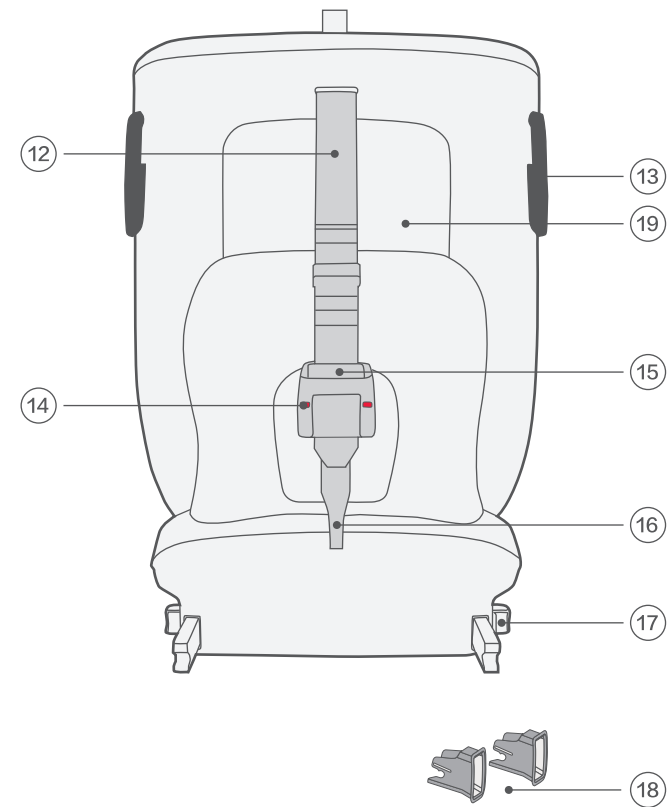
If you want warranty replacement or any other questions, please contact us.

Product parts

Product pictures are only for reference






- | | |
|---------------------------|---------------------------------|
| 01 Headrest | 07 Adjusting strap |
| 02 Upper belt guide (x2) | 08 Seat angle adjustment handle |
| 03 Shoulder pad (x2) | 09 Seat rotation button |
| 04 Shoulder strap (x2) | 10 Insert cushion |
| 05 Harness buckle | 11 Lower belt guide |
| 06 Central front adjuster | |



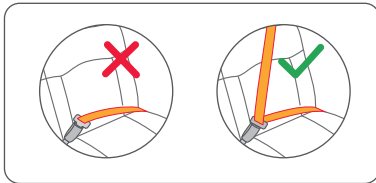
- | | |
|---------------------------------|----------------------------------|
| 12 Top tether | 16 Top tether fixed hook |
| 13 Side guide (x2) | 17 ISOFIX adjustment button (x2) |
| 14 Top tether indicator | 18 ISOFIX guide sleeve (x2) |
| 15 Top tether adjustment device | 19 Manual storage box |

Installation method selection

Weight	Installation mode	Installation diagram	Reference age	Angle position	Small cushion instructions
≤13kg	Baby mode		0-15 months	Rearward installation 1-3 ① ② ③	Baby needs to use a small cushion when weighing 0-10kg
9-18kg	Toddler mode		9 months-4 years old	Forward installation 1-3 ① ② ③	Do not use the small cushion when the baby is 10-36kg
15-36kg	Schoolchild mode		3-12 years old	Forward installation 3 ①	Do not use the small cushion when the baby is 10-36kg

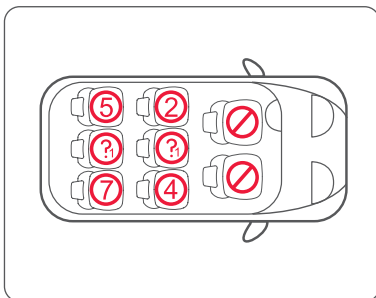
⚠ Do not use forward installation when the baby weighs less than 9kg.

Suitability



⚠ warning: Don't use with two-point seat belt. Please install with three-point seat-belt.

- Please follow the regulations applicable to your country.
- The safety belt must pass CCC certification and ECE R16 safety certification.
- Cannot be used with two-point seat belts.
- Can be used if the car seat is equipped with a three-point seat belt.



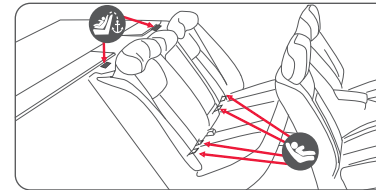
⚠ In this state (90°), it is prohibited to use it during driving.

You can use your child car seat as follows:

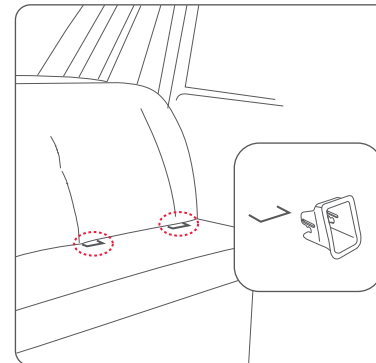
⚠ It cannot be installed on the passenger seat with an airbag in the front row.

1: Applicable to models equipped with ISOFIX systems that meet the requirements of GB14166 or ECE R14 and three-point/retractor seat belts that meet the requirements of GB14166 or ECE R16.

Seat installation



Before using ISOFIX, make sure that your car model has a standard interface (please read the description of ISOFIX fixing points in your car manufacturer's manual).

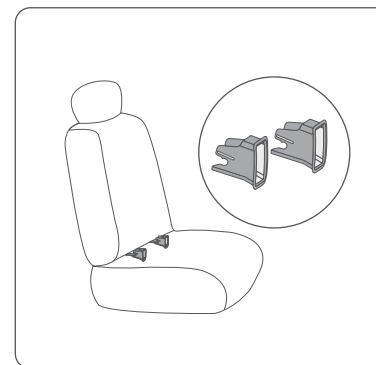


Make sure that the car seat is equipped with ISOFIX fixed anchor points that match the ISOFIX size and class before use.

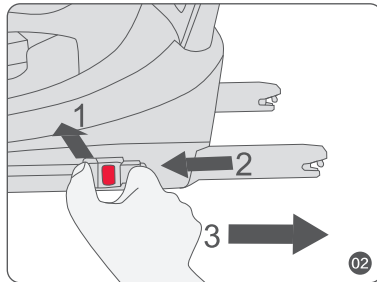
1.ISOFIX guide sleeve 18 installation

ISOFIX guide sleeve 18 can help identify the ISOFIX anchor points of the vehicle and simplify installation. They can also help protect your car seat.

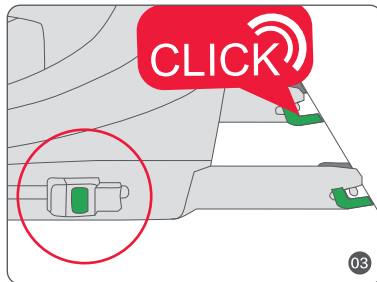
Please insert two ISOFIX guide sleeve 18 and hook them to the ISOFIX anchor points of the vehicle (Figure 1).



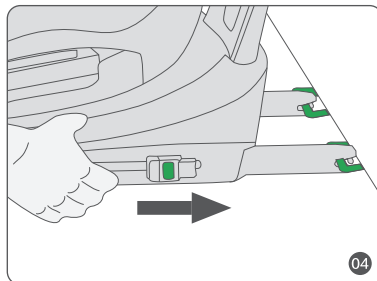
2. ISOFIX installation and removal



01. Pinch the left and right ISOFIX adjustment button 17 with two fingers and pull out the ISOFIX connectors on both sides of the safety seat base until they reach the extended state (Figure 2).

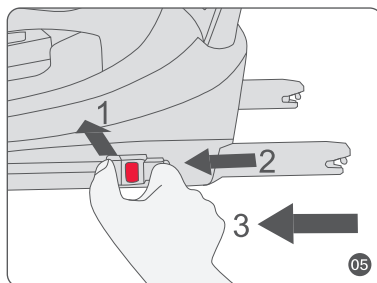


02. Align the left and right ISOFIX connectors with the ISOFIX guide sleeves and insert them into the ISOFIX fixed interface on the car until both sides are locked. When you hear a click, both sides are locked (Figure 3).



03. Press the front end of the base with both hands and push the base toward the back of the car seat to make the base fit the backrest of the car seat completely (Figure 4).

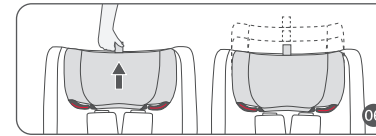
Note: Only when the ISOFIX indicators on the left and right sides appear green does it indicate that the ISOFIX connectors are locked.



04. Pinch the ISOFIX connectors on both sides with both hands, push inward with one finger and press the ISOFIX adjustment button 17 to unlock it (Figure 5).

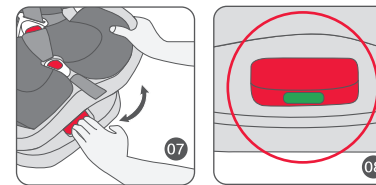
05. If you do not need to use the seat, pinch the ISOFIX adjustment button 17 on the left and right sides with two fingers, and then pull it inward (shown by the arrow) to retract the ISOFIX connectors.

3. Headrest height adjustment



Pull up the headrest adjustment loop so that the headrest and the shoulder strap move up synchronously. Press down the headrest and move the headrest down synchronously with the shoulder strap. Adjust it up or down to fit the child's head (see Figure 6). Note: Before adjusting the height of the headrest, please loosen the safety belt.

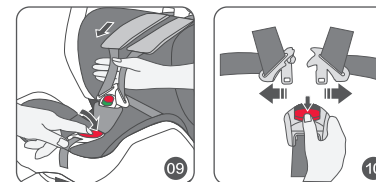
4. Rotation angle adjustment



After fixing the safety seat to the car, hold the seat rotation button 09 with one hand and rotate the seat body with the other hand until the seat body is adjusted to the correct

installation direction. (Figure 7). Check whether the rotation button is displayed in green, which means that the seat is locked. (Figure 8) Tip: When the angle is 90 degrees, the green color will not be displayed.

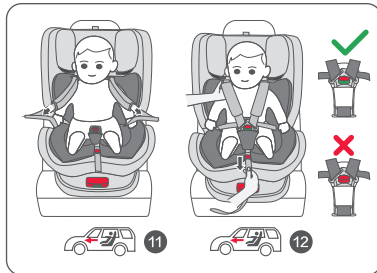
5. Installation and adjustment of 5-point safety belt



① Press the Central front adjuster 06 with one hand, and pull the shoulder strap 04 with the other hand to make it slack. (Figure 9)

② Press the red release button of buckle 05 to separate the shoulder strap from the buckle, and then place the left and right shoulder straps on both sides of the seat. (Figure 10)

7. Adjusting seat reclining angle



③ Put your baby in the seat and make the back as close to the seat back as possible. Place the shoulder strap 04 and the shoulder pad 03 on the baby's shoulder, and put the baby's legs on both sides of the 5-point buckle 05. (Figure 11)

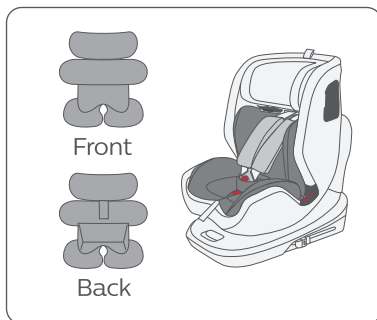
④ Join the left and right buckle tongues, insert them into the buckle 05, hear a "click" sound, and the buckle button indicator is displayed in green at the same time, the buckle is locked. (Figure 12)

⑤ Pull the adjusting strap 07 in the direction of the arrow as shown in the figure to adjust the shoulder strap to an appropriate length to match the baby's body shape, so that the baby can be safely fixed. (Figure 12)

⚠ After putting the baby in the child safety seat, please confirm whether the height of the shoulder strap is adjusted to a suitable position.

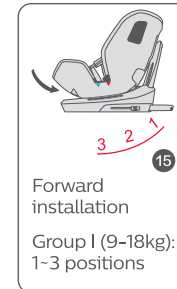
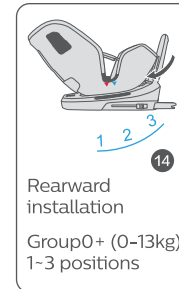
⚠ Make sure there is a palm distance between the baby and the shoulder strap.

6. Use of small cushion



When the child's weight is within 0-10kg, please use a small cushion.

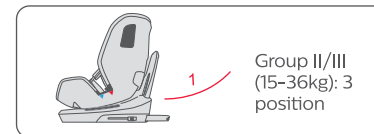
When the child weighs more than 10kg, please remove the small cushion.



Press the seat angle adjustment handle 08 to slide the child safety seat body and adjust the seat angle to a suitable position. (Figure 14, 15)

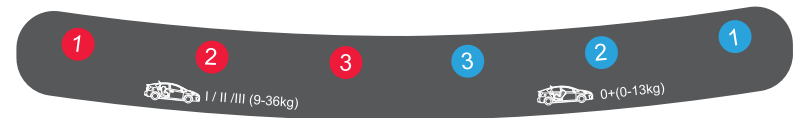
⚠ The baby mode has 3 positions. For example, the angles indicate the 1-3 positions, which are marked with blue circles.

⚠ The toddler mode has 3-position angle adjustments, and the schoolchild mode only

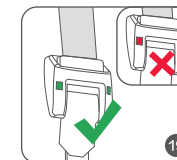
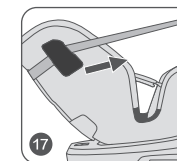
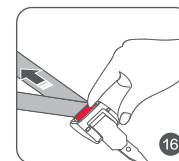


uses 1-position angle adjustment. The angles are marked with 1-3 positions and marked with red circles.

⚠ The schoolchild mode only uses position 1 angle. Angle mark: The upper triangle mark is aligned with the lower circle mark.

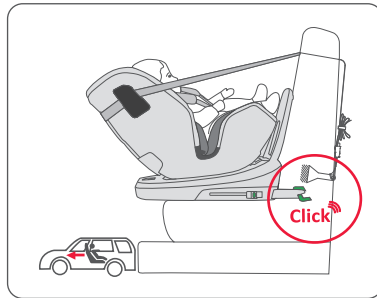


8. Installation of the top tether



Press and hold the top tether adjustment button 15 and extend it to the desired length (see Figure 16). Then pass it through the side guide 13, and get it stuck into the top tether fixing point of the car (see Figures 17, 18). Tighten the top tether, the green display indicates that it is properly fixed (as shown in Figure 19), and make sure that the top tether is under tension.

9. Baby mode-rearward installation (0-13kg)



⚠ Please adjust the angle of the child safety seat to a suitable position first, there are rearward 3 positions (position 1-3)

⚠ Angle mark: The upper blue triangle mark is aligned with the blue circle mark.

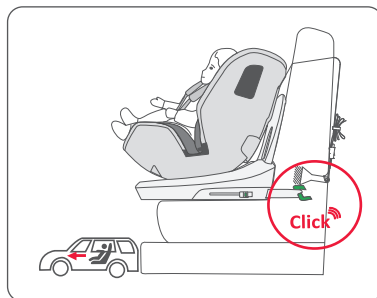
⚠ Before installing the child

safety seat, please make sure that the height of the shoulder strap has been adjusted to the proper position.

! When installing the FIX, make sure that the ISOFIX indicators on the left and right sides appear green and the ISOFIX connectors are locked.

Follow the steps 1-8 to install the seat correctly

10. Toddler mode-forward installation (9-18kg)



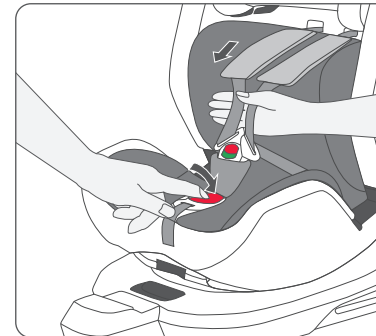
⚠ Please adjust the angle of the child safety seat first. There are forward 3 positions (No. 1-3).

⚠ Angle mark: the upper red triangle mark is aligned with the red circle mark.

⚠ Before installing the child safety seat, please make sure

that the height of the shoulder strap has been adjusted to the proper position.

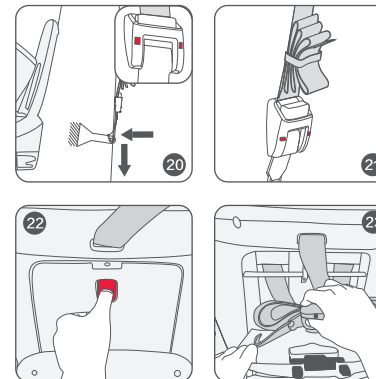
⚠ When installing FIX lock, make sure that the ISOFIX indicators on the left and right sides appear green and the ISOFIX connectors are locked.



⚠ When installing a car seat belt, make sure that the shoulder belt and lap belt don't twist or hinder the normal function of the car seat belt.

Follow the steps 1-8 to install the seat correctly

11. Disassembly and hiding of the top tether

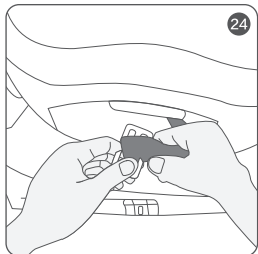


① Push the top tether adjustment device 15 inward to release the tightness of the strap, and then press the top tether fixed hook 16 inward and take it out. The top tether installation indicator 14 is red when unlocked (Figure 20).

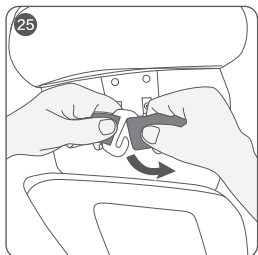
② Fold the webbing into a fan shape and fix it (see Figure 21).

③ Open the manual storage box 19, put the top tether into it, and then close it (Figure 22-23).

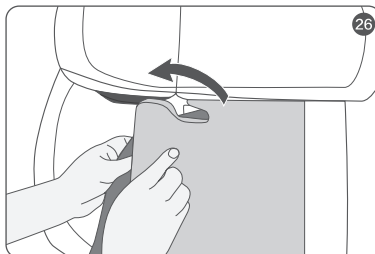
12. Shoulder strap hiding and buckle removal



①. Rotate the seat by 90° to the maximum position, then slide it down from the buckle lock connector at the bottom of the seat and remove the buckle 05. (Figure 24)



②. Open the compartment at the rear of the child car seat, slide the shoulder pad 03 from the lock connector at the rear of the seat, untie the velcro of the chest pad and remove it. (Figure 25)



③. Store the harness underneath the pad at the back of the child car seat (Figure 26)

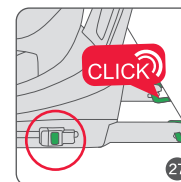
13. School children mode-forward installation (15–36kg)



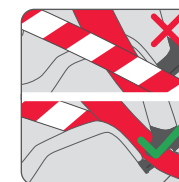
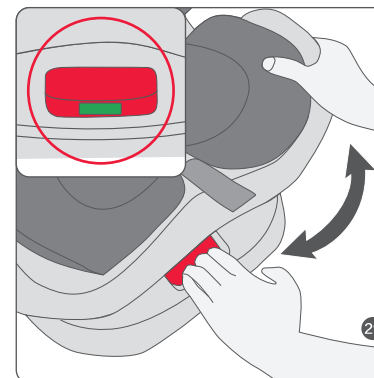
1. Installation method:
three-point safety belt + FIX

⚠ Adjust the angle of the child safety seat to the position 1 with the red triangle arrow corresponding to the red circle. This mode cannot be used on other positions.

①. Put the safety seat on the car and install the ISOFIX connector (x2) to ensure that the child safety seat is firmly installed without shaking. (Figure 27)



②. Hold the seat rotation button 09 with one hand, and rotate the seat body with the other hand until the body is installed forward and locked. Adjust the seat angle, then pass the car seat belt through the upper belt guide 02 guide and the lower belt guide 11, and finally insert into the car seat belt buckle, properly tighten the car seat belt to ensure that the safety seat is firmly installed. (As shown in Figure 28, 29)



⚠ Each webbing of the child safety seat connected to the vehicle should be fastened tightly. The webbing that restrains the child should be adjusted according to the child's body, and the webbing must not be twisted.

About cloth cover

Thank you for purchasing the Philips Avent brand (RODA) child safety seat!

- The illustrations used in this manual are to illustrate the operation method and product structure. When there is a small difference between the actual product and the figure, please refer to the actual product.
- In order to improve the quality of the product, we may change part of the structure and appearance of the product without notice. Please understand.

Common problems and maintenance in the use of child safety seats! You find that the car seat belt is too short during use. There are the following solutions.

- Please try to use it in a different seat.
- Adjust the car's seat backwards.
- If the seat belt of your car can be adjusted, please adjust it to a lower and appropriate position.
- Please straighten the slack part in the seat belt.

If you find that the car seat cannot be placed flat during use; please try to place it in different positions of the car.

Check regularly for wear or damage of parts. If the parts are found to be damaged, do not use them.

Buckle

- Food, beverages or other residues may accumulate in the buckle, please wash with warm water. When the buckle function is normal, you can hear a "click" sound.

Safety belt and plastic parts

- Wipe the safety belt and plastic parts with warm water and neutral soap.

- Do not use this product after removing the cloth cover.
- The cloth cover can be removed and washed, but we do not recommend that you remove the cloth cover frequently. -Once you take apart and wash the cloth cover, please re-install it according to the original structure, and make sure that there is no missing or wrong installation of any parts.
- When cleaning the cloth cover, please scrub gently with soap and warm water. Please do not use any detergent, solvent or very strong soap.
- Do not disassemble, move or change the cloth cover of the child safety seat or any structure or component of the safety belt system, and do not add any lubricant or other chemicals to the cloth cover or safety belt system. When washing the shoulder pad and crotch pad, please wash by hand when the water temperature is below 40 degrees, and dry it flat.
- Do not dry clean, tumble dry, and keep away from strong light.

Cautions for use

- Before using this product, please read the instruction manual of your car carefully.
- Please keep this manual for easy reference.
- This product requires your car seat belt to be a three-point retractor seat belt.
- If your car is equipped with an airbag, please use it with caution.
- Do not buy second-hand products or transfer products of this type.
- Please do not place this product in high places.
- Use of accessories not provided by the manufacturer is prohibited.



制 造 商：童音母婴用品（上海）有限公司
地 址：上海市青浦区公园路348号7层7188室
生产企业：杭州乐檬实业有限公司
地 址：浙江省杭州市萧山区瓜沥镇东方村
电 话：4000-080-996
邮 箱：philips.avent.babytravel@ibabybell.com
网 址：www.philips.com.cn/babytravel