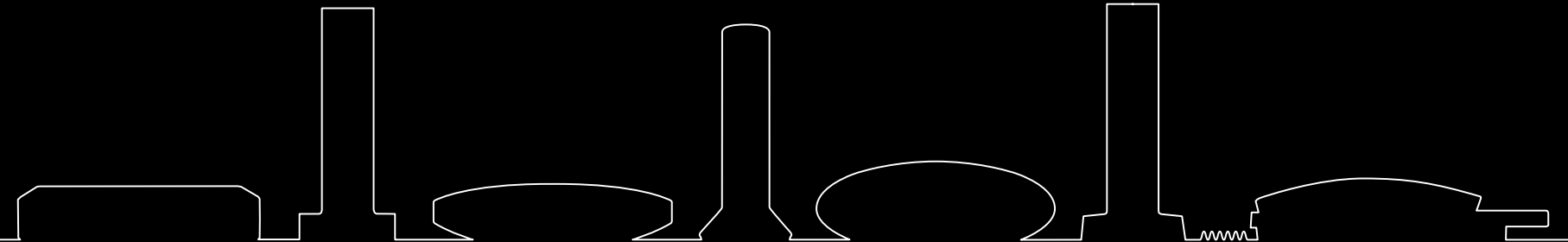


PHILIPS

Design collection



www.philips.com

2017 © Gibson Innovations Limited. All rights reserved.
Philips and the Philips' Shield Emblem are registered trademarks of Koninklijke
Philips N.V. and are used by Gibson Innovations
Limited under license from Koninklijke Philips N.V.

Redefining the home phone

Premium design. Pure connection.

The timeless collection: the Monolith, Faro, Luceo, Mira, Linea V and Scala, seamlessly melds modern simplicity with cutting edge sophistication.

Inspired by contemporary home interiors, luxury accessories and metropolitan living, our Design Collection celebrates life's highly desired aspirations while connecting to who's most important to you. Each phone is designed with refined symmetry and ergonomic geometry in mind, using wide variety of best in class materials and expertly manufactured with precise attention to detail.

Philips' Design Collection represents a fresh new approach in home phone design and usage; one that is truly state of the art – in its artistry and intuitive ease of use – and has distinct pride of place in any home.



The **Philips Monolith** with its iconic design marked by bold geometry and an elegantly unified profile, reflects communication at its artful best. The cordless phone's genuine die-cast metal frame is immaculately crafted and milled for a refined look and feel. A beautifully chamfered edge adds unique distinction to the phone's contrasting satin metal and black matt profile.



Don't be fooled by the boldly sculptured good looks of the **Philips Faro**. Refined craftsmanship and precision engineering elevates this cordless phone to a modern art form, with innovative functionalities to match. The base and handset blend together seamlessly to ensure a true iconic design piece in your home. It's no wonder that the Faro Cordless Phone won a prestigious RedDot Design Award in 2017.



The **Philips Luceo** cordless phone heralds a new era for the home phone. With its irresistibly sleek and modern form factor the Luceo's 360-degree design looks stunning from every angle. Advanced and a distinctive design executed with finesse make the Luceo an objet d'art that would be welcome in any contemporary home. Its seamlessly integrated secondary display on the base reveals the caller ID and time. It also comes with a suite of advanced features, like multiple field phonebook entry and wide selection of privacy settings.



Presenting our special edition **Philips Linea V Lux**, an iconic cordless phone design featuring a soft ambient illumination function. With the light function cleverly integrated into its base, the phone communicates an event or mode by glowing in a specific color. The illumination is so subtle that it easily doubles up as an ideal ambient or night light, while enhancing the phone's savvy design and functionality. Truly a beautiful addition to any room.



Following the great success of the iconic Philips Linea series, the new **Philips Linea V** flaunts its signature slender design and compact footprint, and an iconic speaker opening finished with a sleek metal mesh. This new generation phone flaunts an added masculine edge, bolder silhouette and improved functionality. Both design and function are masterfully melded in one stunning phone that will surely enhance any home space.



The **Philips Mira** has won its way into many hearts and homes. With its sculptured silhouette, alluring yet durable fingerprint-resistant finish and iconic ergonomic design. Forging a fresh direction in cordless phone design, the Mira features effortless and intuitive keypad operation as well as handset cans crafted for unbeatable comfort during long calls. Its smart cable system keeps wires hidden while Philips HQ-Sound technology ensures clear and natural voice reproduction – always.



The **Philips Scala** is a corded phone that completes our designer lineup and embodies the classic qualities of corded phones – namely, reliability and safety – in the Design Collection's key design language of bold simplicity and iconic sophistication. Its minimalist design ensures excellent comfort and ergonomic fit, whether for short chats or long discourses, while its cleverly hinged, high contrast reverse display offers a clear view from any angle. Whether placed on a tabletop or mounted on a wall, the Scala is truly a timeless piece that fits ideally in today's modern home.

Monolith

Redefining the home phone

Naturally, such sophisticated form must be complemented by state of the art features. The Monolith's stunning architecture is cleverly harmonised with innovative integration of the Touch technology and intuitive ease of use. Authenticity — in both style and experience — is what sets the Monolith apart from all other home phones.



Monolith

Unmatched style and performance

Smart design and function are effortlessly expressed and melded in the Philips Monolith. It's hard to discern where it all starts ... or ends.

Intuitive "Tap to Talk" lets you enjoy easy hands-free conversations. Simply tap the top of the handset to answer an incoming call. Similarly, you can grab extra snooze time with just by touching the docked handset. A specially designed large sensor area means that precision is not required. The Monolith features a built-in loudspeaker which comfortably amplifies the caller's voice for convenient hands-free communication.

The Monolith's high contrast secondary display is seamlessly integrated with its base. When there is an incoming call, the secondary display shows the Caller's ID*. When in idle mode, the time is discreetly displayed. You can choose to switch off the base display — so there's no light disturbance — at any time.

* Only when supported by the network operator



Sophisticated design with genuine metal frame and secondary display on the base

Large, high resolution TFT color display

Tap handset for easy hands-free chats or extra sleep time

Monolith

- Tap handset for easy hands-free chats or extra sleep time
- Secondary display on the base shows Caller ID* and clock
- Charge handset either way around
- Large, high resolution 5.1cm (2") TFT color display
- Answering machine with up to 60 minute recording
- HQ-Sound
- Handset speakerphone
- Assign ringtone to a specific contact
- Hearing aid compatible
- Baby monitor
- Extended privacy settings: Black list, anonymous call, silence mode, call barring
- Three-field phonebook entry (150 contacts x 3 numbers)
- Up to 18 hours of talk time
- Up to 250 hours of standby time
- Full ECO+ mode

* Only when supported by the network operator





Faro

A new form of conversation

A RedDot Design Award winner, the Faro's iconic design is expressed through pristine lines and ergonomic geometry that seamlessly unify the handset with its base and secondary display. Its smart dual docking feature not only ensures hassle free charging but lets you opt to show off the phone's stunning display and keypad, or its sleek design profile. The perfect fit with any contemporary home interior and lifestyle, the Faro will surely redefine the art of communication (OR) conversation.



Finely crafted, bold and sculptural



Seamlessly integrated large reverse display and calibrated keys



Secondary display on the base shows Caller ID* and time

Faro

Pure and smart simplicity

The Faro's exquisite form comes suitably packed with smart features like HQ-Sound, a large white on black graphical handset display, and a precision calibrated keypad. Expect no less than a truly integrated and intuitive experience with the Philips Faro.

Designed for easy access and use, you can instantly hit the speakerphone button on the base for hands-free chats or alarm snooze for sleeping in just a while longer ...

To safeguard your privacy, you can keep unwanted calls at bay with functions like black list, silence mode and call barring. The Faro also features a visual ringer and is compatible with hearing aids.

* Only when supported by the network operator



Faro

- 1.8" reverse white on black LCD display
- Secondary display on the base shows Caller ID* and clock
- Charge handset either way around
- HQ-Sound
- Handsfree speaker with instant activation
- Hearing aid compatible
- Visual ringer
- Easy alarm snooze
- Answering machine with up to 30 minute recording (M775 only)
- Three-field phonebook entry (100 contacts x 3 numbers)
- Privacy settings: black list, call barring, silence mode
- 10 polyphonic ringtones
- Up to 16-hour talk time
- Up to 250-hour standby time
- Full Eco+ Mode

* Only when supported by the network operator

Luceo

A new beginning

With its premium form factor and refined, sensual details, the Philips Luceo is iconic in every facet, redefining the home phone in today's modern living space.

From its elegantly integrated secondary display on the base to its smart guiding system for secure docking, plus advanced functions, the Luceo is a true masterpiece in communication, desired by any homeowner with discerning taste. With HQ-Sound technology, every conversation is clear and sounds natural. Advanced features include a large white-on-black graphical display on handset, precision-calibrated keypad, 3-field phonebook entries, and an ample choice of privacy settings: blacklist, silence mode and call barring.

The Luceo range features the classic hero in timeless black and white, but also other bold personalities in dramatic red and dynamic black with pattern. Make a daring statement in your home with the Philips Luceo range of cordless home phones and breathe new style into your life*.

* Please check with local distributor(s) for color option(s) available in your country



Luceo

Striking and smart

Beyond its sleek lines and refined form, the Philips Luceo is carefully crafted to look and feel sturdy and be truly comfortable to use.

Its high contrast white-on-black display is seamlessly integrated with the base to show Caller ID* information when there is an incoming call or the time when in idle mode. Users can choose to switch off the base display - so there is no light disturbance - at any time.

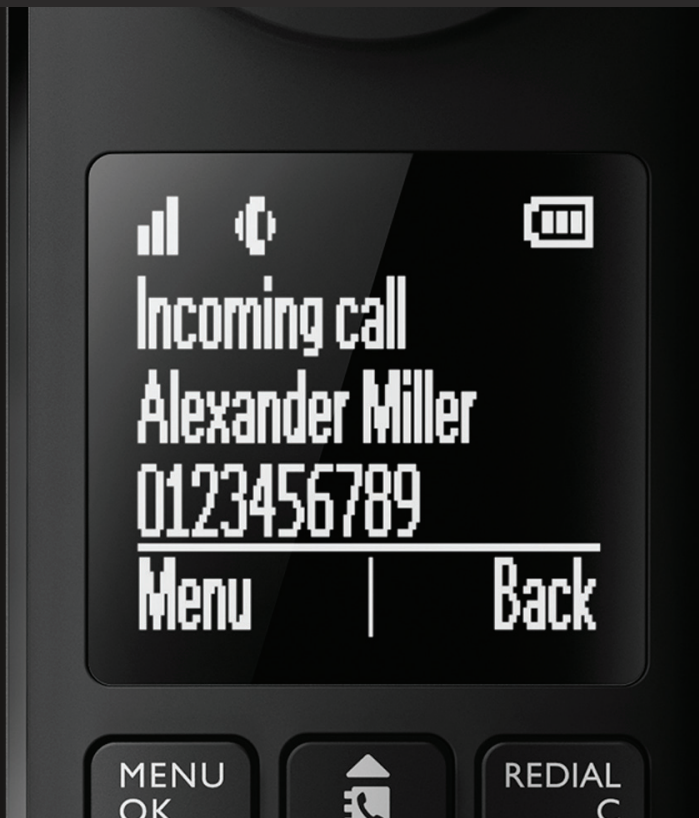
Precision design of discreet side walls in the base allow for easy and effortless docking. Dual charging means that the Luceo will charge whichever way it is docked.

With the Philips Luceo in the home, communication will become an art form again.

* Only when supported by the network operator



Secondary display for Caller ID* and clock



Large, high contrast reverse LCD for easy reading and perfect design blend



Effortless docking and charging

LUCEO

- 1.8" reverse white on black LCD display
- Display and keypad backlight (White)
- Three-field phonebook entry (100 x 3)
- Caller ID*
- Privacy settings: blacklist, silence mode, call barring
- Up to 30-minute answering machine (M665 only)
- HQ-Sound
- Hands-free speaker
- 10 polyphonic ringtones
- Up to 16-hour talk time
- Up to 250-hour standby time
- Full Eco+ Mode

* Only when supported by the network operator





Mira

Unique & desirable

Throughout the decades, groundbreaking designs have transformed how we see and interact with the world around us, becoming iconic classics along the way. The same holds true for our Mira.

With its sleek and elegant silhouette, black and white minimalist color combination, and attractive, curved contours, Mira challenges conventional perceptions about telephone design.

Yet while it undoubtedly complements any modern home interior, Mira is more than a triumph of form and function. Think high-quality construction, crystal clear sound, distinctive design, and eye-catching profile – all cleverly combined in one remarkable, eco-friendly phone.

It's timeless. It's unique. It's stylish. It's the one and only Mira.



High-gloss outer shell that is durable and fingerprint resistant

Easy to read 4.6 cm (1.8") display with white backlight

Calibrated keypad for precise dialing

Mira

Beautiful everywhere

Undeniably easy on the eyes, Mira's single and continuous ovalshaped design is not just aesthetically pleasing. You'll discover using the handset is effortless and intuitive, especially with the calibrated keypad for precise dialing. The durable, high-gloss outer shell is fingerprint resistant while the graceful curves sit naturally in your hand.

Mira includes a convenient charging feature, so it will always be charged and ready for use no matter which way you place the handset in the base. What's more, a smart cable system keeps wires hidden and out of sight to maintain Mira's sleek lines.

In any case, you'll be inspired to keep on talking for hours.



Mira

- 1.8" display with white backlight
- Display and keypad backlight (White)
- 100-name phonebook
- Caller ID*
- Privacy settings (Call block and Call barring)
- Up to 30-minute answering machine (M565 only)
- HQ-Sound
- Handset speakerphone
- 10 polyphonic ringtones
- Up to 16-hour talk time
- Up to 250-hour talk time
- Full Eco+ Mode

* Only when supported by the network operator

Linea V

The finest line to connect

Design takes centrestage with the precision-engineered Philips Linea V, featuring an unconventional V speaker opening that enhances its iconic silhouette.

Integrated within its stately form are smart features like secure docking with dual charging options and multiple privacy settings. Commanding attention at every angle and intuitive to use, the Linea V is a must-have masterpiece in any home.



Linea V

Nothing was overlooked in the design and engineering of the new Philips Linea V. Impeccable attention to detail resulted in an even sleeker yet bold architecture, expressing purity and excellence from form through to function.

The signature V-shaped speaker opening is a stunning focal point, reflecting the phone's apt name. A glossy chamfer triangle sweeps upward, meeting the edges seamlessly like an infinite loop and emphasising the phone's ultra slender shape. An integrated Micro USB connector on the base unit ensures the phone can stay powered via a pre-charged power bank—and you stay connected – always, even when the power is out. A host of other smart functions and precise ease of use complete the Linea V experience. With refined geometry and symmetry flowing in total harmony, the Linea V is an exquisite work of art that elevates communication to higher level.



Slender design and compact footprint for space efficiency



Easy to pick up handset



High contrast 4.6cm (1.8") reverse display

Linea V

- Large 1.8" (4.6cm), high contrast reverse LCD
- Secure docking with dual charging option
- HQ-Sound
- Handset speakerphone
- Caller ID*
- Privacy settings: call block & call barring
- Answering machine with up to 25 minute recording (M355 only)
- Up to 10 hours talk time
- Up to 180 hours standby time
- Phonebook for 50 contacts
- ECO+ mode
- Micro-USB connector

* Only when supported by the network operator



Linea V Lux

How glow can you go?

Introducing our special edition Linea V Lux, an elegantly understated cordless phone design with a delightfully fresh function: soft ambient illumination.

With its cleverly integrated light base, the phone communicates an event or mode by glowing in a specific color. The illumination is so subtle it doubles up as an ideal ambient or night light, while enhancing the phone's savvy design and functionality. The light is a useful alert for incoming or missed calls, voice messages and alarm. In standby mode, it quietly sets the mood or softly illuminates any space, however if full darkness is required simply switch this function off by tapping a key on the handset. Choose from 3 attractive colours to enhance any space in your home.





Scala

Safe and reliable connection in style

The Philips Scala brings trendy style and reliable ease of use into a classic communication mode but with a distinctly modern edge. There's surety and nobility in its corded design, which expresses a timeless and engaging elegance. The Scala consistently delivers on ergonomic comfort, eco-friendliness and quality excellence.



Cleverly hinged, white on black LCD offers an easy reading from any angle



Comfortable, perfectly weighted handset for long conversations



Ideal for both tabletop and wall-mounted use

Scala

Smart reliability

Thoughtfully designed and engineered for comfort, the Scala's sturdy, ergonomic handset is perfectly weighted so it feels just right – no matter how long the conversation. Its cleverly hinged, white-on-black LCD display can be clearly seen from any angle. Whether taking pride of place on a tabletop or mounted on a wall, this corded phone is a joy to behold and to use.



Scala

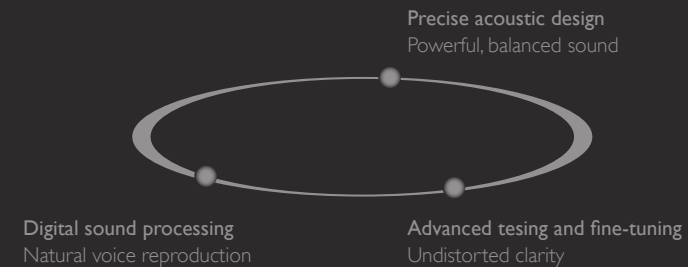
- Radiation free
- Secure connection at any time, even during power cuts
- Event LED alerts you to missed calls
- 2.75" hinged high contrast LCD display
- Speakerphone
- Hearing aid compatible*
- 25-name phone book
- Caller ID**
- 40-call log entries
- Mute and silence modes
- Wall mountable

* Depends on the country version

** Only when supported by the network operator

DESIGN COLLECTION

In a perfect
harmony

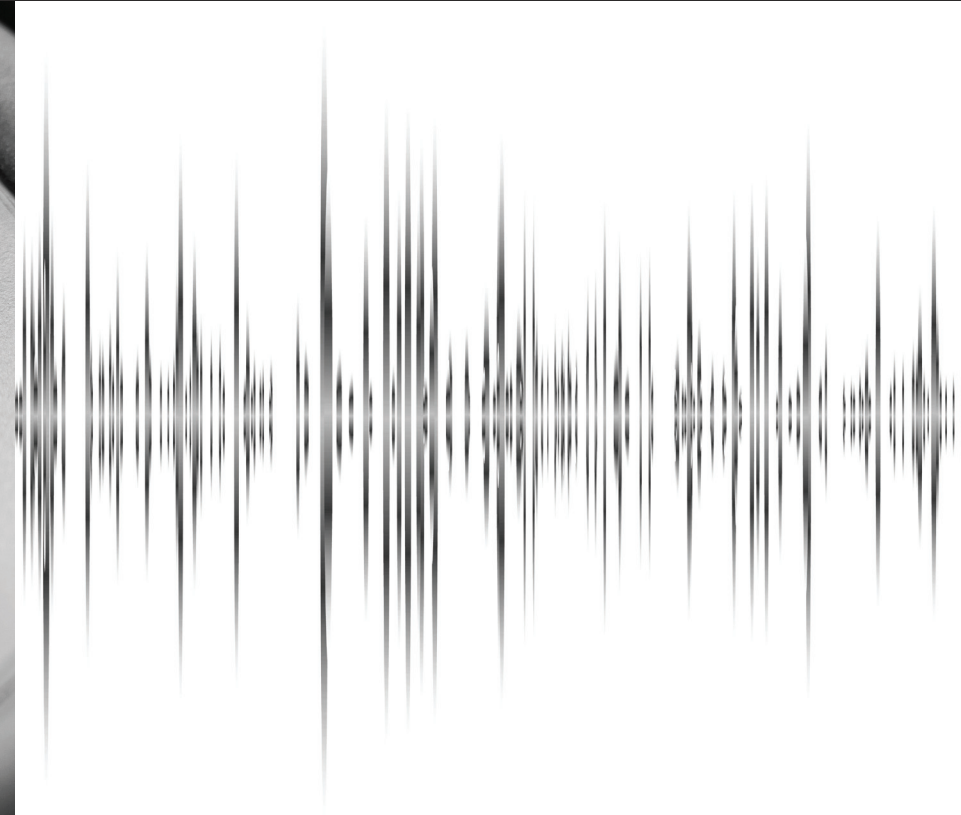


Besides stunning good looks, exceptional audio quality is another of the Design Collection's strong points. Thanks to a combination of precise acoustic design, digital sound processing and advanced testing, the caller's voice is reproduced with remarkable authenticity.



Precise acoustic design

- Carefully selected components
- Built into controlled enclosures
- Optimized acoustic system for excellent sound



Digital sound processing

- Tuned for natural balance
- Choice of sound profiles
- Eliminates volume fluctuations and echoes



Advanced testing and tuning

- Tested in real environments
- Accuracy attained from high-end professional equipment
- Clear, untainted and precise sound

DESIGN COLLECTION

Advanced & Sustainable

The Philips Dect Phone are an excellent choice for the obvious reasons, but also for the fact that it's an environmentally friendly product. At Philips, your needs as well as Mother Nature's are important to us. These are just some of the benefits both you and the environment will benefit from.



Reduced power radiation

Up to 93% reduction in power transmission when the handset is close to the base.

Reduced energy consumption

High-efficiency, switched-mode power supply further reduces energy consumption by up to 60% compared to conventional linear power supplies.

ECO+ no-emission mode

When the ECO+ mode is activated, you'll enjoy zero power emissions.

Monolith

* Please check with local distributor(s) for color option(s) available in your country



Faro

* Please check with local distributor(s) for color option(s) available in your country



Luceo

* Please check with local distributor(s) for color option(s) available in your country



Mira

* Please check with local distributor(s) for color option(s) available in your country



Linea V



* Please check with local distributor(s) for color option(s) available in your country

Scala

* Please check with local distributor(s) for color option(s) available in your country

