

# PHILIPS

## Straightener

### 9000

Personalized technology

Maintains hair strength\*

Up to 70% moisture lock-in\*\*

4x more ions for shiny hair\*\*\*



BHS830/05



## Personalized straightening with SenseIQ

Proven to maintain up to 93% of hair strength\*

Introducing the Philips personalized straightener with SenseIQ technology that is designed to lock your hair's natural moisture deep within. The result? Strong hair and a healthy-looking shine every time you style.

### SenseIQ technology

- Personalized straightening
- Senses hair's temperature
- Adapts straightening performance to prevent overheating

### Care for your hair

- Keeping hair strength
- Tetra Ionic System for shiny hair
- Cares uniquely for your hair

### Easy to use

- Quick styling
- Pull-free gliding
- Easy straightening with 3 styling modes
- Precise styling with cool tip
- Convenient styling with roll-up pouch

# Highlights

## Personalized



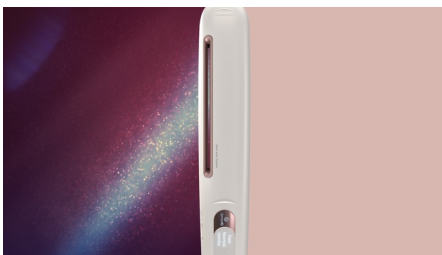
SenseIQ technology for a personalized straightening experience. Senses. The active digital sensor measures your hair's temperature more than 20,000 times per styling session. Adapts. The intelligent microprocessor automatically adjusts the temperature to prevent your hair from overheating. Cares. Our sensing and adapting technology protects the hair while styling, locking-in up to 70% of its natural moisture\*\*.

## Strength



Proven to maintain up to 93% of your hair's essential strength\*, the straightener with SenseIQ makes sure your hair always feels healthy on the inside while looking sleek and lustrous outside.

## Tetra Ionic System



Let your hair feel the enriching ionic ambience with the Tetra Ionic System. The patented design releases millions of ions using 4 special jets nested on both sides of the straightener. The enriching molecules remove static, eliminate frizz, and gives your hair lustrous glossy shine.

## Sensing



Unique hair needs unique care. So stroke after stroke, Philips Straightener Prestige personalizes to you. Its active digital sensor measures the temperature of your hair more than 20,000 times per styling session to give you a tailor-made experience every time you style.

## Adapting



The intelligent microprocessor is the brain behind SenseIQ. It constantly analyzes and adjusts the temperature. Adapting its heat to your hair, the straightener prevents overheating, while always providing the styling performance you expect.

## Caring



Give your hair the exclusive care it deserves. The straightener with SenseIQ technology locks in up to 70%\*\* of your hair's natural moisture to ensure sleek, healthy-looking hair full of shine.

## Quick styling



Warming up in seconds, the straightener glides across your hair in fewer passes thanks to 20% larger\*\*\* plates. Choose between 14 temperature settings to get the precise styling you need.

## Pull-free gliding



Float across the surface of your hair without any pulling thanks to ultra-smooth plates that received a special anti-friction treatment.

## Easy straightening



At the touch of a button, select one of three modes based on your hair-type: Fast mode. Heats to 210°C for hard-to-straighten hair, including thick, course or curly. Normal mode. Heats to 190°C for use on textured or softly waved hair. Gentle mode. Heats to 170°C for use with fine, pale, blonde or color-treated hair. For hair protection, SenseIQ is automatically activated in all modes.

# Specifications

## Caring technologies

SenseIQ technology

Ionic Care: Yes, 4 ionic jets

## Features

Settings: 3 modes: Fast, Normal, Gentle

Auto shut-off: after 60 min

LED display

Swivel cord

Storage hook

## Technical specifications

Heat-up time: 15 sec

Voltage: 110-240 V

Cord length: 2 m

## Accessories

Pouch: Heat-resistant roll-out pouch

Heat protection cap

## Service

2-year worldwide warranty

