



**PHILIPS**

Ultrasound

Affiniti

**It understands  
your everyday**

Philips Affiniti ultrasound system for musculoskeletal

# Ask for more

## in musculoskeletal (MSK)

Designed to set you apart and help you stay ahead, the Philips Affiniti ultrasound system delivers innovation that responds to the musculoskeletal imaging needs of a busy orthopedic, sports medicine, rheumatology, or ultrasound department. Affiniti combines outstanding performance and efficient workflow, and features innovative Philips technologies.

### Why ultrasound for MSK?

The reasons are simple. Ultrasound is widely available, easy to use, and more cost-effective than other imaging methods. Ultrasound scanning can give a clear picture of soft tissues that do not show up well on X-ray images.

In addition, ultrasound for MSK:

- Provides real-time imaging, making it an ideal tool to guide minimally invasive procedures such as fluid aspiration and needle biopsies
- Facilitates dynamic examination of anatomic structures
- Offers an excellent companion to MRI by providing a cost-effective first look



With image replication and TGCs on its tablet touchscreen, Affiniti was designed to reduce reach and button pushes.

## Workflow meets wow

### Real-time iSCAN (AutoSCAN)

AutoSCAN automatically and continuously optimizes gain and TGC to provide excellent images.

### SmartExam protocols

System-guided SmartExam protocols facilitate exams, with an onscreen menu that guides the user through required views by exam type, automatically enters annotation, and builds your report. These protocols have been clinically proven to reduce exam time by up to 50% by reducing keystrokes and alerting the user to any missed views.<sup>1</sup>

### Query retrieve

Use multimodality query retrieve to view DICOM images such as MR and ultrasound. Easily compare past and current studies without the use of an external reading station and even review these multimodality images while live imaging.

### Set-up Wizard

Set-up Wizard allows users to step up to the system, easily establish user configurations, and get running quickly.

### Active native data

Active native data allows for post-processing of many exam parameters.



# Comfort meets **competence**

## Advanced workflow

Affiniti was designed for walk-up usability and is so intuitive that it requires minimal training on system use to be able to complete an exam.<sup>2</sup> The system reduces repetitive button pushes and steps so you can focus on what really matters: providing excellent care for your patients.

## Ready when you need it

At just 83.5 kg (184 lb), Affiniti is one of the lightest in its class and is 16% lighter than its predecessor. With its small footprint and fold-down monitor, pushing the system down hallways and in tight spaces is easy. Affiniti can be placed in sleep mode within two seconds and boot up to full functionality in just seconds. Wireless DICOM further aids workflow.



You won't notice it's there unless it's gone, but users have reported that easy clip, our innovative cable management solution, keeps cables tangle-free, and reduces damage while decreasing cable strain to enhance comfort while scanning.

54.6 cm (21.5 in) monitor articulates for easy viewing and folds down for transport

Goes to sleep in two seconds; back to full functionality in just seconds

Service Request button for immediate access to Philips support

Four transducer ports and one-handed transducer access



Philips leverages the experiences of its customers, designing Affiniti to address the challenges of daily scanning. We understand the reality of tight spaces, high patient volume, technically difficult patients, and time constraints, and we've designed the system with thoughtful details to help lighten your workload.

# Made for **MSK**

Ergonomic and lightweight, our broad range of transducers is available in multiple configurations for excellent penetration.

The system's precision beamforming delivers superb spatial and contrast resolution, outstanding tissue uniformity, few artifacts, and reduced image clutter.

Tissue Specific Presets (TSPs) automatically adjust over 7,500 parameters to optimize the transducer for the specific exam type, producing excellent image quality with little or no need for image adjustment.

#### **Tissue aberration correction**

Innovative tissue aberration correction technology compensates for changes in the speed of sound to display detailed images of MSK anatomy. Philips linear transducers are now optimized with tissue aberration correction to provide superb imaging performance across a variety of MSK applications.

## A full range of transducers to fit your MSK needs\*

Transducer	Application
L18-5	Superficial MSK
L12-5 50	General MSK
L12-4	General MSK
L12-3	General MSK
L15-7io	Specialized application
C9-2	Hips and spine



\* Check with your local Philips representative for availability.

## Redefining clinical expectations

#### **SonoCT and XRES**

SonoCT and XRES work in tandem to display superb images. Real-time multiple lines-of-sight imaging increases tissue information and improves display of curved and irregular structures while reducing many angle-generated artifacts. Variable XRES uses expertise gained from MR, allowing Philips to bring XRES adaptive image processing to ultrasound.

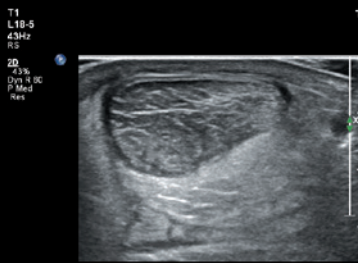
Together, variable XRES imaging algorithms and spatial compounding reduce speckle noise and add a new level

of refinement by improving conspicuity of existing tissue patterns and bringing margins and borders into even greater definition. Variable XRES allows the user to select progressive amounts of noise reduction, edge enhancement, and textural smoothing.

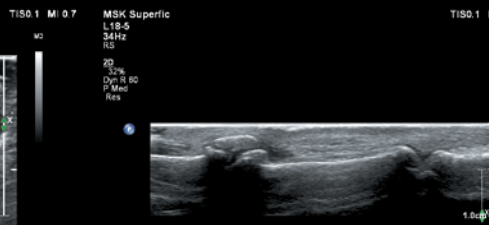
#### **Panoramic view**

Use panoramic imaging to capture the entire landscape in a single view. It's easy to perform, and the extended view allows a global representation of MSK anatomical structures.

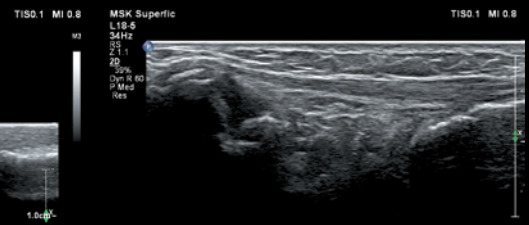
# Performance you can see



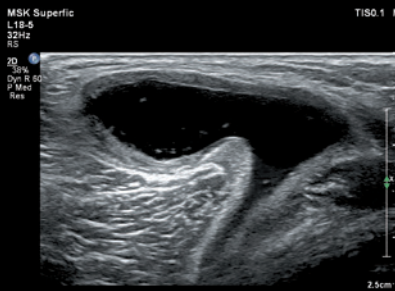
**Achilles tendon**



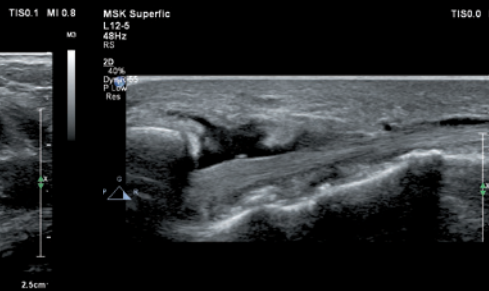
**Finger calcification**



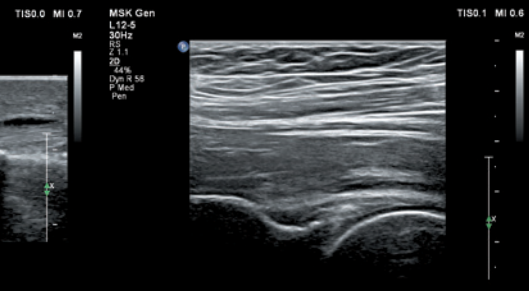
**Arthritic changes**



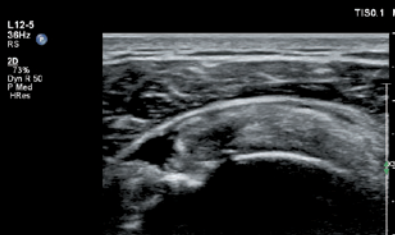
**Baker's cyst**



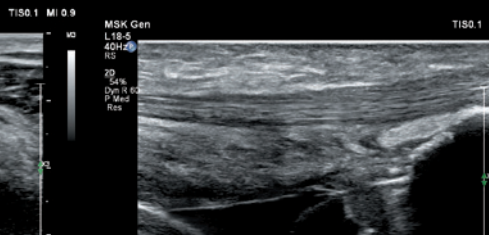
**Lateral malleolus**



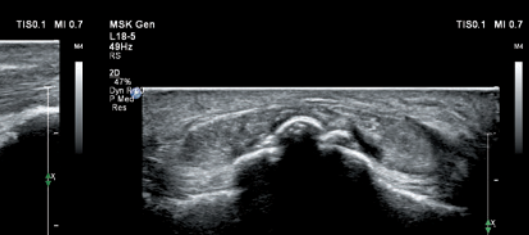
**Hip with arthritic changes**



**Biceps tendon tear**



**Patellar tendon – total knee replacement**



**Post-surgical tibial tuberosity**





Affiniti features integrated efficiency tools and multiple degrees of articulation for scanning comfort.

# A **smart** investment

We understand your challenges: uncertain economic times, changing healthcare landscapes, and the impact of healthcare reform. We know that efficient workflows and system uptime are critical success factors in running an effective healthcare business. While you'll find Affiniti a powerful tool to enhance patient and clinician satisfaction, the system itself consumes very little power.

Affiniti boasts a low total cost of ownership, making it a smart investment. Built to last, it is designed to withstand the rigors of high patient volume. Smart service options\* help reduce disruption to your everyday workflow.

#### **Library quiet**

Silent as a library, with a smaller footprint than conventional ultrasound models, Affiniti will not distract you from the care you want to provide.

#### **Scanning comfort**

The control panel with 180° of movement and generously sized articulating monitor of 54.6 cm (21.5 in) enhance scanning comfort, whether standing or sitting.

**Affiniti consumes nearly**

**40%**  
**less power**

than its predecessor.\*\*  
It consumes less energy than a toaster and generates less heat, which can help you save on energy and cooling costs.



\* Not all services available in all geographies; contact your Philips representative for more information. May require service contract.

\*\* HD15

# Count on us

## as your patients count on you

### Remote service capabilities maximize efficiency

Easy, rapid technical and clinical support through the remote desktop service that allows for a virtual visit with a Philips expert.\*

If you prefer to keep your know-how in-house, the OmniSphere Remote Technical Connect capability allows your BioMed team remote access to Philips systems on your network so that you can have remote service capabilities your way.

### Proactive monitoring solutions maximize uptime

Philips proactive monitoring increases system availability by predicting potential system disruptions and proactively acting on them, letting you focus on what is most important – your patients.

### Immediate support request at your fingertips

Enter a request directly from the control panel for fast and convenient communication with Philips experts without leaving your patient, minimizing interruptions to workflow.

### On-cart transducer test provides confidence in your transducer quality

The on-cart transducer test provides a non-phantom method to test Affiniti transducers at any time, giving you confidence in your diagnostic information.

### Utilization reports for confident decision-making

Data intelligence tools can help you make informed decisions to improve workflow, deliver quality patient care, and decrease total cost of ownership. The on-board utilization tool provides individual transducer usage data and the ability to sort by exam type. The OmniSphere Utilization Optimizer takes this a step further by providing easy-to-use charts and graphs for all of your applicable\*\* networked Philips systems.

### Understanding your needs, designed for you

Our flexible RightFit service agreements, education offerings, and innovative financing solutions can be adapted to meet your needs and strategic priorities.

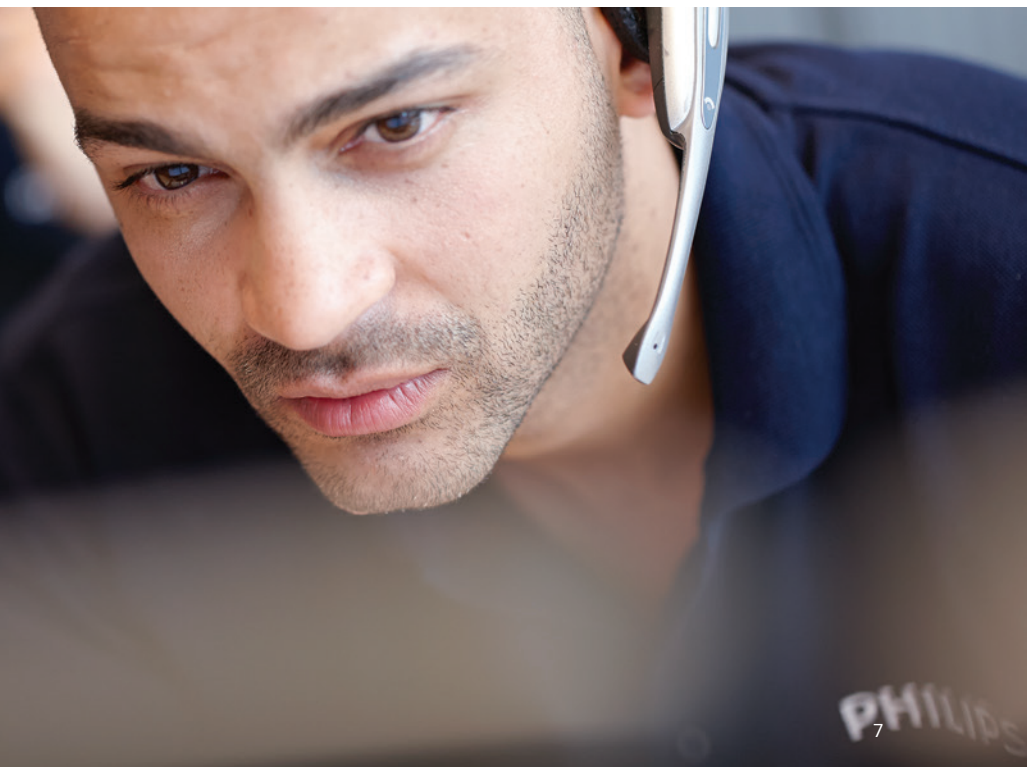
- **Technology Maximizer Program:** Helps keep your system performing at its peak by continuously providing the latest software from Philips at a fraction of the cost of the same upgrades purchased individually over time.
- **Xtend Coverage:** Lets you choose additional service coverage for your ultrasound equipment at the time of purchase to more easily calculate your total cost of ownership.
- **Clinical education solutions:** Comprehensive, clinically relevant courses, programs, and learning paths designed to help you improve operational efficiency and enhance patient care.

\* Not all services available in all geographies; contact your Philips representative for more information. May require service contract.

\*\* Check with your Philips representative for system compatibility.

### ISSL technology

This industry-standard protocol meets global privacy standards and provides a safe and secure connection to the Philips remote services network using your existing Internet access point.



1. University of Colorado, protocols study, April 2007.
2. 2014 internal workflow study comparing Affiniti to HD15.

©2016 Koninklijke Philips N.V. All rights are reserved. Philips reserves the right to make changes in specifications and/or to discontinue any product at any time without notice or obligation and will not be liable for any consequences resulting from the use of this publication. Trademarks are the property of Koninklijke Philips N.V. or their respective owners.



[www.philips.com/Affiniti](http://www.philips.com/Affiniti)

Printed in the Netherlands.  
4522 991 21601 \* NOV 2016