

Installation Guide

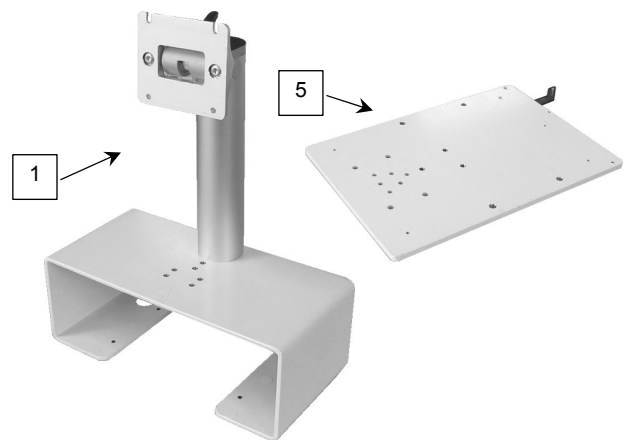
Stack Mount Kit for Philips G5 and MP90 Display

The purpose of this guide is to describe installation of the Stack Mount.

Parts Reference

The following parts and hardware are included with this installation kit (hardware not shown):

Item #	Description	Qty
1	Yoke, G5 Stack Mount with 9" Tilt/Swivel Post	1
2	#10-32 x 9/16" Pan Head Machine Screw (PHMS)	4
3	#10 Flat Washer	4
4	Remote Speedpoint/Display Mounting Kit (not shown)	1
5	Camlock Mounting Plate	1
6	M6 x 10mm Flat Head Machine Screw (FHMS)	3
7	M4 x 20mm PHMS	2
8	#6-32 x 3/8" PHMS	1
9	5/32" Hex Wrench	1

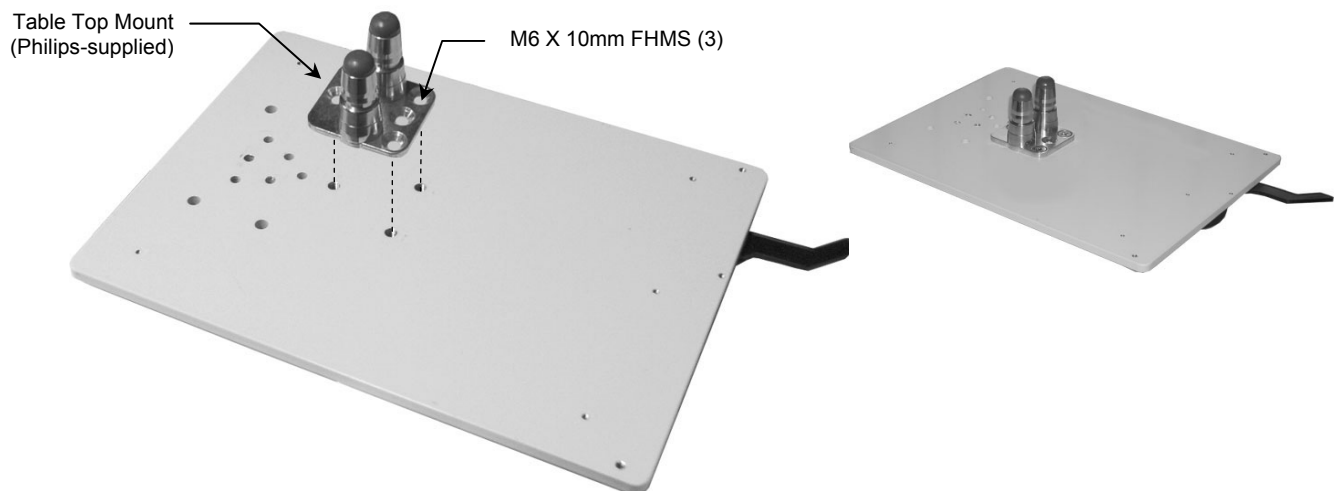


Tools required: Phillips screwdriver (not provided).

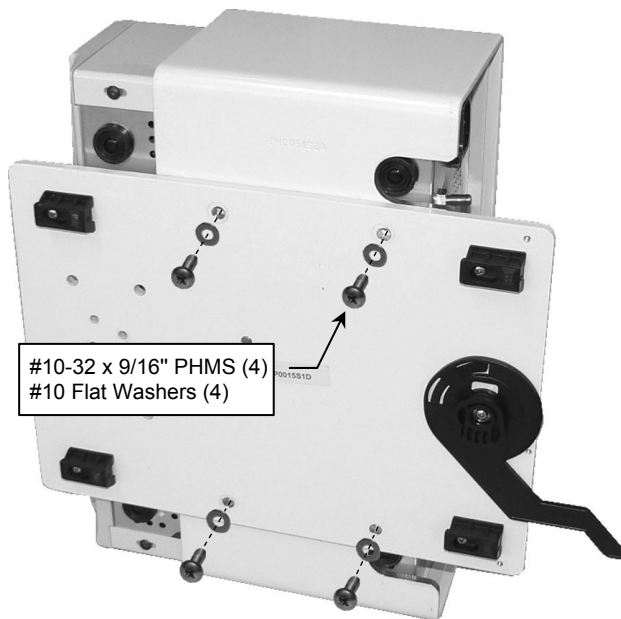
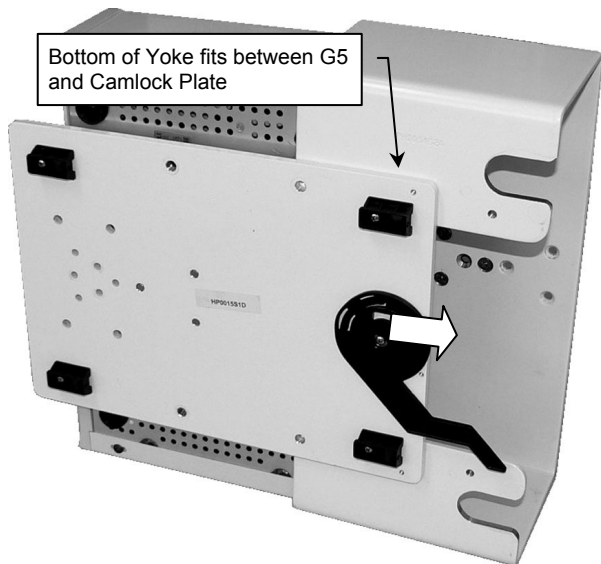
Mounting G5 in Stack Mount Yoke

Installation Note: Table Top Mount is supplied by Philips.

1. Fasten Table Top Mount to Camlock Mounting Plate with three (3) M6 x 10mm FHMS.

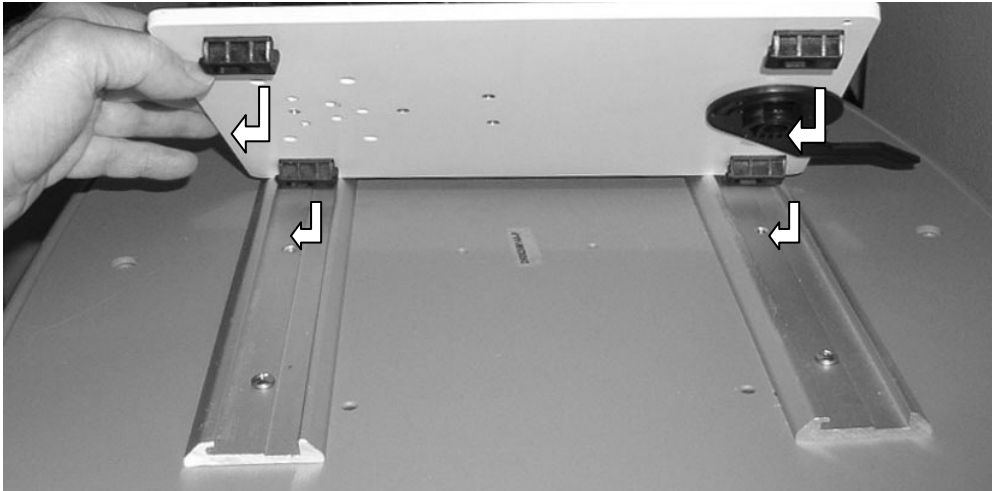


1. Mount G5 on table top mount in accordance with Philips instructions.
2. Slide the G5 Mounting Plate assembly into the Yoke as shown below left. The Yoke fits between the bottom of G5 and top of the Camlock Plate.
3. Align four (4) mounting holes in Camlock Plate with corresponding mounting holes Yoke.
4. Fasten Camlock Plate to Yoke with four (4) #10-32 x 9/16" PHMS and #10 washers as shown below right.

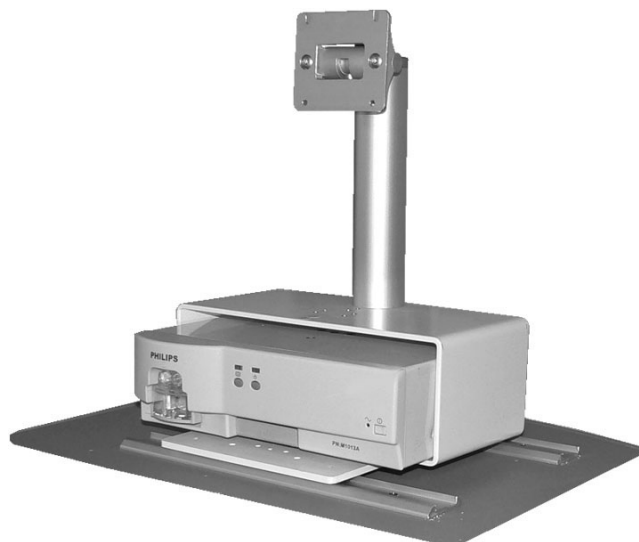
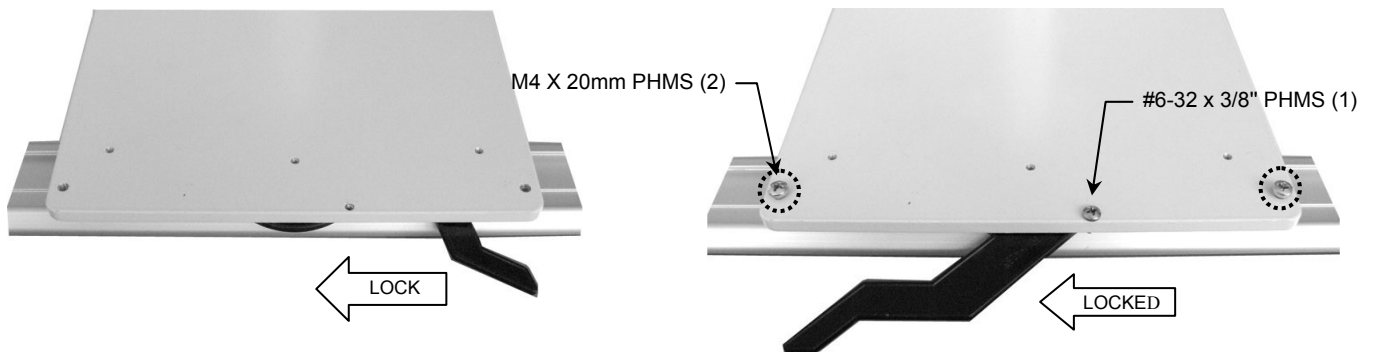


Mount G5 Stack Mount assembly in Camlock Rails

1. Insert the four (4) camlock feet in camlock rails. **Installation Note:** Camlock Lever must be in the "unlocked" position when mounting feet in Rails



2. Lock Camlock Plate by moving Camlock Lever from right to left. To prevent Camlock Lever from being unlocked, insert one (1) #6-32 x 3/8" PHMS in the threaded hole to the right of the Lever (below right). To further secure the Camlock Mount in the Rails, insert one (1) M4 x 20mm PHMS in each of the two (2) threaded holes at the rear corners of the Mount (below right). Stop tightening these screws when they make contact with the bottom of the Rail.



Mounting the Display

Mount the display in accordance with the installation guide (DU-AG-0019-80) provided with the Remote Speedpoint/Alert Bracket/Display Mounting Kit.

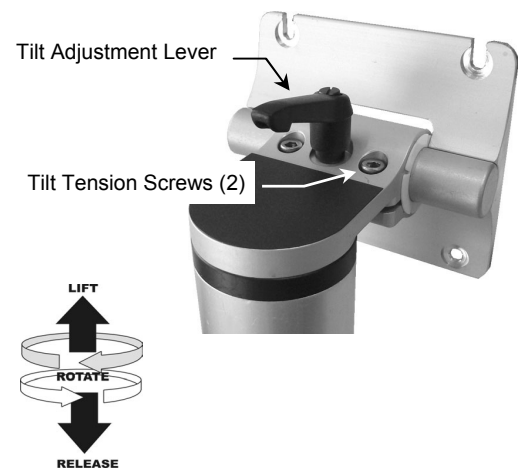


Adjusting Tilt and Swivel Tension

Tilt Tension: Adjust overall tilting tension by evenly tightening or loosening two (2) tilt tension screws with the 5/32" hex wrench provided. Once overall tilt tension is set, use Tilt Adjustment Lever to fine tune/lock tilt position.

Tilt Adjustment: Turn Tilt Adjustment Lever counterclockwise (CCW) to loosen. Lever provides ratchet-style adjustment (see **Note** below). Grasp the display and tilt to desired angle. Turn Tilt Adjustment Lever clockwise (CW) to tighten and lock position.

Note: The Tilt Adjustment Lever is a multi-position clamping lever that operates by lifting, rotating, and releasing the handle.



Periodic Maintenance

Periodically inspect all fasteners associated with the mounting system. Tighten or adjust fasteners as necessary for optimal operation and safety.

Cleaning the Mounting Assembly

1. The mounting assembly may be cleaned with most mild, non-abrasive solutions commonly used in the hospital environment (e.g. diluted bleach, ammonia, or alcohol solutions).
2. The surface finish will be permanently damaged by strong chemicals and solvents such as acetone or trichloroethylene.
3. Do not use Steel wool or other abrasive material.
4. Damage caused by the use of unapproved substances or processes will not be warranted. It is recommended that any cleaning solution be tested on a small area of the mounting assembly that is not visible to verify compatibility.
5. Never submerge or allow liquids to enter the mounting assembly. Wipe any cleaning agents off of the mounting assembly immediately using a water-dampened cloth. Dry the mounting assembly thoroughly after cleaning.

CAUTION: GCX makes no claims regarding the efficacy of the listed chemicals or processes as a means for controlling infection. Consult your hospital's infection control officer or epidemiologist. To clean or sterilize mounted devices or accessory equipment, refer to the specific instructions delivered with those products