

# Estrogen Receptor Pathway Activity Score to Predict Clinical Response or Resistance to Neoadjuvant Endocrine Therapy in Primary Breast Cancer



Márcia A. Inda<sup>1</sup>, Erik J. Blok<sup>2,3</sup>, Peter J.K. Kuppen<sup>2</sup>, Ayoub Charehbili<sup>2</sup>, Eveline C. den Biezen-Timmermans<sup>4</sup>, Anne van Brussel<sup>1</sup>, Sevgi E. Fruytier<sup>2</sup>, Elma Meershoek-Klein Kranenbarg<sup>2</sup>, Susan Kloet<sup>5</sup>, Bart van der Burg<sup>6</sup>, John W.M. Martens<sup>7</sup>, Andrew H. Sims<sup>8</sup>, Arran K. Turnbull<sup>8,9</sup>, J. Michael Dixon<sup>9</sup>, Wim Verhaegh<sup>1</sup>, Judith R. Kroep<sup>3</sup>, Cornelis J.H. van de Velde<sup>2</sup>, and Anja van de Stolpe<sup>1</sup>

## ABSTRACT

Endocrine therapy is important for management of patients with estrogen receptor (ER)-positive breast cancer; however, positive ER staining does not reliably predict therapy response. We assessed the potential to improve prediction of response to endocrine treatment of a novel test that quantifies functional ER pathway activity from mRNA levels of ER pathway-specific target genes. ER pathway activity was assessed on datasets from three neoadjuvant-treated ER-positive breast cancer patient cohorts: Edinburgh: 3-month letrozole, 55 pre-/2-week/posttreatment matched samples; TEAM IIA: 3- to 6-month exemestane, 49 pre-/28 posttreatment paired samples; and NEWEST: 16-week fulvestrant, 39 pretreatment samples. ER target gene mRNA levels were measured in fresh-frozen tissue (Edinburgh, NEWEST) with Affymetrix microarrays, and in formalin-fixed paraffin-embedded samples (TEAM IIA) with qRT-PCR. Approximately one third of

ER-positive patients had a functionally inactive ER pathway activity score (ERPAS), which was associated with a nonresponding status. Quantitative ERPAS decreased significantly upon therapy ( $P < 0.001$  Edinburgh and TEAM IIA). Responders had a higher pretreatment ERPAS and a larger 2-week decrease in activity ( $P = 0.02$  Edinburgh). Progressive disease was associated with low baseline ERPAS ( $P = 0.03$  TEAM IIA;  $P = 0.02$  NEWEST), which did not decrease further during treatment ( $P = 0.003$  TEAM IIA). In contrast, the staining-based ER Allred score was not significantly associated with therapy response ( $P = 0.2$ ). The ERPAS identified a subgroup of ER-positive patients with a functionally inactive ER pathway associated with primary endocrine resistance. Results confirm the potential of measuring functional ER pathway activity to improve prediction of response and resistance to endocrine therapy.

## Introduction

Endocrine therapy is one of the mainstays in treatment of both early and metastatic breast cancer. Especially, the use of endocrine therapy has resulted in increased survival rates (1–3). Patients are currently selected for endocrine therapy using IHC analysis of estrogen receptor (ER) and progesterone receptor (PR) expression (4). Both the American Society for Clinical Oncology and the European Society for Medical Oncology advise a threshold of 1% ER-positive tumor

cells (5, 6). In practice, many clinicians and countries choose a threshold of 10% (7). More quantifiable analyses like Allred scoring and H-score have been developed and suggested for clinical application, but are currently not routinely used (5).

Despite the success of endocrine therapy in ER-positive breast cancer, up to half of patients do not show the expected response (8, 9). In addition to cancer tissue heterogeneity, several mechanisms have been proposed to explain lack of therapy response, like emergence of ESR1-activating mutations or activation of other signal transduction pathways upon pharmacologic inhibition of the ER pathway (10, 11). Standard IHC analysis detects the presence of nuclear ER protein. However, to what extent positive nuclear ER staining indicates actual functional activity of the ER pathway has not been addressed satisfactorily. A test to predict response to endocrine therapy based on measuring functional activity of the ER pathway is expected to improve decision making regarding endocrine therapy and/or alternative therapies (12).

A number of data-driven RNA-based tests have been developed to assess recurrence risk and predict response to endocrine therapy (8, 12–14). However, no test is available to measure functional ER pathway activity. A knowledge-based Bayesian network computational model for the ER pathway has been developed to assess functional activity of this pathway in tumor tissues (15, 16). The model used mRNA expression levels of 27 high evidence target genes of the ER transcription factor to infer the activation state of the ER pathway. Earlier analysis using this ER pathway model showed that only part of ER-positive patients had an active pathway, which was associated with lower risk of relapse after adjuvant tamoxifen

<sup>1</sup>Philips Research, Eindhoven, the Netherlands. <sup>2</sup>Department of Surgery, Leiden University Medical Center, Leiden, the Netherlands. <sup>3</sup>Department of Medical Oncology, Leiden University Medical Center, Leiden, the Netherlands. <sup>4</sup>Philips Molecular Pathway Dx, Eindhoven, the Netherlands. <sup>5</sup>Leiden Genome Technology Center, Leiden University Medical Center, Leiden, the Netherlands. <sup>6</sup>Bio-Detection Systems, Amsterdam, the Netherlands. <sup>7</sup>Medical Oncology, Erasmus MC, Rotterdam, the Netherlands. <sup>8</sup>Applied Bioinformatics of Cancer, University of Edinburgh Cancer Research UK Centre, MRC Institute of Genetics and Molecular Medicine, Edinburgh, United Kingdom. <sup>9</sup>Edinburgh Breast Unit, Western General Hospital, Edinburgh, United Kingdom.

**Note:** Supplementary data for this article are available at Molecular Cancer Therapeutics Online (<http://mct.aacrjournals.org/>).

**Corresponding Author:** Márcia A. Inda, Philips Research Laboratories, High Tech Campus 11, Eindhoven 5656 AE, the Netherlands. Phone: 314-0274-9577; Fax: 314-0274-9577; E-mail: [marcia.inda@philips.com](mailto:marcia.inda@philips.com)

Mol Cancer Ther 2020;19:680–9

doi: 10.1158/1535-7163.MCT-19-0318

©2019 American Association for Cancer Research.

treatment (15). Here, we report results on use of this ER pathway model to predict and assess response to endocrine therapy in patients with ER-positive breast cancer treated in a neoadjuvant setting.

## Materials and Methods

### Cell line cultures and estradiol levels in breast cancer tissue

Stimulation experiments with  $17\beta$ -estradiol (E2) and RNA isolation of a panel of breast cancer ER-positive cell lines were performed by BioDetection Systems (BDS). Cell lines were purchased by the ATCC, and maintained in DMEM/F12 supplemented with 10% FBS. Experiments were performed at passage n+4 (CAMA1 and BT474), n+12 (MCF7), and after thawing at an unknown passage for T47D. No extra tests, besides ATCC authentication, were performed. Two days before experiments, cells were seeded in 60-mm plates in DMEM/F12 with charcoal stripped phenol red-free serum supplemented with nonessential amino acids and penicillin/streptomycin, at a density such that 75% to 90% confluence was obtained by the time of harvesting. Medium was refreshed 24 hours before exposure to 1 nmol/L E2, 10 nmol/L E2, or DMSO (control) for 16 hours. Subsequently, cells were harvested and RNA was extracted using the NucleoSpin RNA Isolation Kit (Macherey-Nagel). Details on measurement of E2 concentrations in eight fresh-frozen ER-positive breast tissue samples supplied by Erasmus Medical Center (Rotterdam, the Netherlands) are given in Supplementary Material and in references (17, 18).

### Affymetrix GeneChip microarrays

Affymetrix HGU133Plus2.0 GeneChip microarray analysis was performed on the samples of the cell line experiments as described before (15, 19). See Supplementary Methods for more details. Data were deposited in GEO (GSE127760). All Affymetrix (CEL) data (generated in this study or retrieved from GEO) were processed using R (<https://www.R-project.org>) BioConductor *affy* and *frma* (20, 21) packages.

### Edinburgh breast cancer cohort

Datasets GSE10281 (22) and GSE20181 (14, 23) contain data from a cohort of postmenopausal patients with large strongly ER-positive (Allred score 5 or more) breast cancers recruited at the Edinburgh Breast Unit. Patients underwent neoadjuvant treatment with 2.5 mg daily letrozole for three months. Both sets contain data from fresh-frozen biopsies with at least 20% tumor content. The Affymetrix HGU133Plus2.0 GSE10281 (AffyP2 Edinburgh) dataset concerns 18 patients with samples collected at baseline and after three months of treatment. The Affymetrix HGU133A GSE20181 (AffyA Edinburgh) dataset contains gene expression data from biopsies of 62 patients collected at baseline and after approximately two weeks and three months of treatment. Clinical response was defined as tumor volume reduction of at least 50%, assessed after three months using three-dimensional ultrasound (14). Data from six patients were included in both datasets (overlap).

### NEWEST breast cancer cohort

Dataset GSE48905 (24) contains data from a multi-center phase II study, in which postmenopausal women with operable, locally advanced (T2, 3, 4b; N0-3; M0) ER-positive breast tumors were randomized for neoadjuvant treatment with 500 mg or 250 mg fulvestrant for 16 weeks.

Tumor core biopsies (fresh-frozen tissue) were obtained before start of treatment and Affymetrix HGU133Plus2.0 microarrays were performed. Tumor volumes were measured by three-dimensional ultra-

sound and clinical response was classified as complete response (CR, disappearance of all lesions), partial response (PR, at least 65% reduction in tumor volume), progressive disease (PD, at least 73% increase in tumor volume), or stable disease (SD, none of the previous).

### TEAM Ila breast cancer cohort

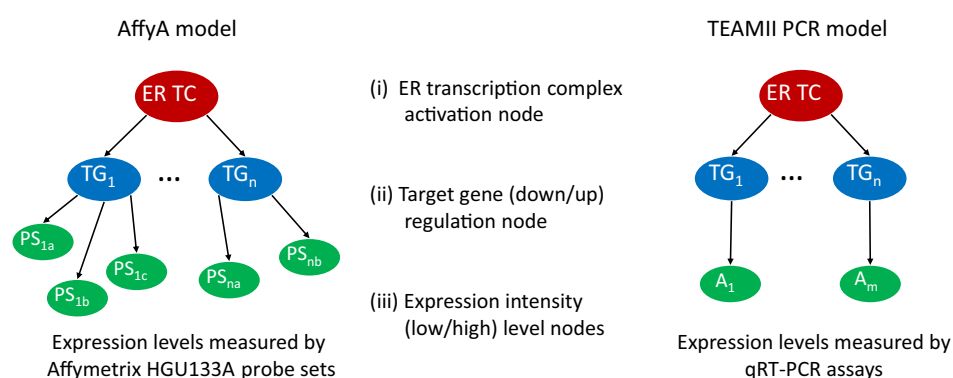
The Dutch TEAM Ila trial is a completed neoadjuvant phase II prospective trial (25). Briefly, 102 patients with ER-positive ( $\geq 50\%$  nuclear ER staining) breast cancer were randomized to receive 3 or 6-month neoadjuvant exemestane treatment. Because of slow accrual, the study changed to single arm design consisting of 6-month therapy. Standard clinicopathologic characteristics, including PR and HER2 status, were assessed. Pretreatment cancer tissue biopsies and post-neoadjuvant treatment tumor resection specimens were collected and analyzed retrospectively; all tissue samples were formalin-fixed paraffin-embedded (FFPE). A total of 49 biopsy and 48 resection samples were eligible for analysis, of which 28 samples were paired cases from the same patient (Supplementary Fig. S1). Primary clinical outcome was reduction in tumor size using RECIST 1.1 criteria assessed by manual palpation.

### LCM and RNA isolation for FFPE samples from TEAM Ila

Cancer tissue was separated from surrounding normal and stromal tissue using laser capture microdissection (LCM) as described by Espina and colleagues (26). See Supplementary Methods for more details. In FFPE biopsy samples, low tumor content limited the amount of available mRNA.

### ER pathway models

The method used to develop the ER pathway model has been described before (15). The model uses mRNA expression levels of ER target genes measured in a tissue sample to infer the odds in favor of a transcriptionally active ER transcription factor and, as a consequence, odds in favor of an active ER pathway. A Bayesian network representing the ER pathway transcriptional program (Fig. 1; ref. 15) describes (i) how target gene regulation depends on ER transcription complex activity and (ii) how expression level intensities in turn depend on regulation of the respective target genes. The network consists of three types of nodes: (i) ER transcription complex activation node; (ii) target gene regulation node, with states “down” and “up”; and (iii) expression intensity level nodes, with states “low” and “high,” each corresponding to an ER target gene. The previously described ER pathway model was developed for analysis of Affymetrix HGU133Plus2.0 (AffyP2) data, that is, target gene expression level nodes correspond to AffyP2 probe sets (15). During ongoing development toward a diagnostic ER pathway test to further improve the sensitivity and specificity of the previously described ER pathway model, an additional informative ER target gene (PDZK1) was included (27, 28). Following measurements of breast cancer tissue estrogen levels, the model was adjusted to estradiol levels in breast tissue by recalibration on data from MCF7 cultures exposed to 1 nmol/L estradiol (E2) from GSE35428 (Table 1; ref. 29), instead of 25 nmol/L E2 used to calibrate the original model (Table 1; ref. 30). Agreement between the original and optimized AffyP2 model was assessed on a collection of 5,395 breast cancer tissue and cell line samples (Supplementary Table S1). Sensitivity and specificity were assessed on 421 breast cancer cell line samples with well-established ER pathway activation state (Supplementary Table S1). Subsequently, the sensitivity-optimized (1 nmol/L) ER pathway model was adapted for use on two other mRNA measurement platforms, that is, Affymetrix HGU133A (AffyA) and 1-step qRT-PCR.

**Figure 1.**

Schematic representation of ER pathway model network. Left, schematic of the Affymetrix HGU133A (AffyA) model network; only genes and probe sets present in the AffyA platform were kept. Center, node type description. Right, schematic of TEAMII PCR model; qRT-PCR assays were developed for a subset of target genes of the AffyP2 model.

Adaptation of the ER pathway Bayesian network model between AffyP2 and AffyA microarray platforms consisted of selecting probe sets that were identical on both platforms and recalibrating on samples measured on the respective platforms. For lack of probe availability in the AffyA platform, nine probe sets and the CDH26 gene were removed from the AffyA computational model. The resulting AffyA model retained 50 probe sets, representing 27 of the 28 ER target genes. The model was calibrated using Affymetrix HGU133A mRNA expression data from dataset GSE9936 (Table 1; ref. 31). For the qRT-PCR platform, the 28-target gene ER pathway Bayesian network was reduced to a smaller network containing the most informative target genes from the AffyP2 model (15). The main reason for reducing the number of target genes in the qRT-PCR-based model was intended use on FFPE samples. To avoid multiplexing of qRT-PCRs leading to bad

qRT-PCR performance, multiple separate diagnostic grade qRT-PCRs needed to be developed. Because frequently very small samples are available from biopsy FFPE material (as in the TEAM Ila study), the amount of RNA isolated from such samples is limiting with respect to the number of qRT-PCRs that can be performed. For this reason, a smaller selection of target genes was identified based on evidence of the gene being a direct ER target gene, as well as their capacity to differentiate between ER pathway inactive and active MCF7 cell cultures. Subsequently, this selection was validated by comparing inferred ER pathway activities obtained with the 28-gene Affymetrix model to inferred activities obtained with a reduced Affymetrix model adapted to this limited target gene set. Following this successful initial validation step, qRT-PCR assays were developed and validated according to standard procedures for each of the selected target genes and a

**Table 1.** Datasets used in this study.

Set	Platform	Use	Set description	Reference
GSE8597	AffyP2	Calibration of original 25 nmol/L E2 AffyP2 model	MCF7 cell line treated with 25 nmol/L E2 ( $n = 4$ ) or DMSO ( $n = 4$ ) for 24 hours.	(30)
GSE35428	AffyP2	Calibration of optimized 1 nmol/L E2 AffyP2 model	MCF7 cell line treated with 1 nmol/L E2 ( $n = 10$ ) or ethanol ( $n = 10$ ) for 24 hours.	(29)
GSE9936	AffyA	Calibration of AffyA 6 nmol/L E2 model	MCF7 cell cultures treated with 6 nmol/L E2 ( $n = 3$ ) or vehicle ( $n = 3$ ) for 24 hours.	(31)
BrCa cell line calibration	qRT-PCR <sup>a</sup>	Calibration of TEAMII PCR model	MCF7 cell cultures treated with 1 nmol/L E2 ( $n = 4$ ) or vehicle ( $n = 4$ ) for 16 hours.	This study
BrCa cell line test	AffyP2 and qRT-PCR <sup>a</sup>	Agreement between AffyP2 and TEAMII PCR models	MCF7, T47D, CAMA1, and BT474 cell lines treated with 1 nmol/L E2, 10 nmol/L E2, or DMSO (control) for 16 h ( $n = 11$ matching samples).	This study (GSE127760)
GSE17700	AffyP2 and AffyA	Agreement between AffyP2 and AffyA models	Biological replicate samples from 16 patients with breast cancer processed by both platforms in two different institutions ( $n = 16 \times 2$ matching samples).	(22)
AffyP2 Edinburgh (GSE10181)	AffyP2	Evaluation of ERPAS decrease during AI and agreement with AffyA model	Biopsy samples of 18 patients of the Edinburgh cohort, collected at baseline and after 3 months neoadjuvant treatment with letrozole ( $n = 18 \times 2$ correlation with AI; $n = 6 \times 2$ agreement with AffyA model).	(14, 23)
AffyA Edinburgh (GSE20181)	AffyA	Correlation with AI response data and agreement with AffyP2 model	Biopsy samples of 55 patients of the Edinburgh cohort, collected at baseline and after 3 months neoadjuvant treatment with letrozole ( $n = 55 \times 3$ correlation with AI; $n = 6 \times 2$ agreement with AffyP2 model).	(24)
TEAM Ila	qRT-PCR <sup>a</sup>	Correlation with AI therapy response	Forty-nine biopsy and 48 resection samples (28 paired samples) of the TEAM Ila cohort.	This study
NEWEST (GSE48905)	AffyP2	Correlation with fulvestrant response	Forty-two samples from patients treated for 16 weeks with either 500 mg or 250 mg of the selective estrogen receptor degrader fulvestrant.	(24)

Abbreviations: AffyA: Affymetrix HGU133A; AffyP2: Affymetrix HGU133Plus2.0.

<sup>a</sup>TEAMII PCR prototype plate.

set of reference genes. A Bayesian computational qRT-PCR ER pathway model (TEAMII PCR ER pathway model) was constructed as described previously (15) and calibrated using the breast cancer cell line calibration set (Table 1). Target gene mRNA expression values from these cell line experiments were obtained as described below and used as input to calibrate and validate this TEAMII PCR model. A research use prototype qRT-PCR plate, containing reagents for performing the qRT-PCR reactions, was used in this TEAM IIa study (Molecular Pathway Dx, Philips, TEAMII PCR prototype plate). To facilitate comparison between results obtained on different measurement platforms, a normalized ER pathway activity score (ERPAS) was computed for all models: The inferred odds in favor of an active ER pathway were transformed into a (base 2) logarithmic scale and normalized to scores ranging from 0 to 100, where 0 corresponds to the lowest and 100 corresponds to the highest odds in favor of an active ER pathway that a specific model can infer.

In summary, the new 1 nmol/L E2 model for AffyU133P2.0 contains the PDKZ1 gene in addition to the gene list described before (15). The 6 nmol/L E2 AffyA model lost one gene for which no probe sets were available on the AffyA platform. For the qRT-PCR-based model, best performing target genes identified using AffyU133P2.0 results were selected for further development of the model toward a commercially available diagnostic qRT-PCR-based ER pathway test (www.Philips.com/Oncosignal).

#### Generation of ER target gene qRT-PCR expression data

Quantitative expression levels of target genes and reference genes were determined using one-step qRT-PCR. See Supplementary Methods for more details. Normalized quantification cycle ( $C_q$ ) values were used as input for the TEAMII PCR ER pathway model. For the TEAM IIa trial samples, inferred ERPASs were calculated in a blinded manner at Philips and returned to Leiden University Medical Center (Leiden, the Netherlands) for correlation to therapy response.

#### DNA sequencing

Targeted sequencing was used to perform mutation analysis of *ESR1* and *PIK3CA* genes on 28 available TEAM IIa resection samples with either a paired biopsy sample or an ERPAS on the resection sample. DNA was extracted from whole samples and, if possible, from macro-dissected samples. See Supplementary Methods and ref. 32.

#### Evaluation of agreement between models

Agreement between ER pathway models was evaluated by correlating activity scores obtained by the different models on identical sample sets (Table 1). Linear relationship between inferred activity scores was assessed by orthogonal regression, assuming equal residual variance. Agreement was assessed by Pearson correlation and mean deviations (MD) from the fitted orthogonal regression line were used as indication of the measurement error between two models.

#### Statistical analysis

Statistical analysis was performed using R (<https://www.R-project.org>) and SPSS 23.0 (IBM). Paired  $t$  tests were used to assess mean decrease in ERPAS between baseline and posttreatment measurements.  $\chi^2$  tests were used to assess association between outcome categories and dichotomized ERPAS. Two sample  $t$  tests and ANOVA were used to assess ERPAS and decrease in ERPAS association with clinical outcome and baseline parameters. All tests assumed unequal variance. Unless indicated otherwise, two-sided  $P$  values and 95% confidence intervals (CI) are reported.

## Results

### Development and validation of ER pathway models

Optimization of the previously described ER pathway model included adjusting sensitivity to match estradiol (E2) levels present in breast cancer tissue. For this, E2 levels were measured in tissue samples of ER-positive breast cancers. Measured concentrations varied between 2.2 and 7 nmol/L E2 (Supplementary Table S2), in line with concentrations reported by others (33, 34). The new AffyP2 ER pathway model was calibrated on MCF7 breast cancer cells stimulated with 1 nmol/L estradiol, which lies between E2 concentrations in normal breast (<1 nmol/L) and in cancer tissue (7 nmol/L in this study). Results obtained with this 1 nmol/L-calibrated ER model strongly correlated with results obtained with the previously described 25 nmol/L-calibrated ER model (15),  $\text{corr} = 0.94$ , and showed the expected increase in sensitivity (from 83% to 91%), without loss in specificity (92%; Supplementary Figs. S2 and S3). The 1 nmol/L model was used for analysis of AffyP2 datasets in this study. Because the ER pathway models are measurement platform specific, the AffyP2 model was adapted for use on AffyA and qRT-PCR data, as described in the Materials and Methods section, and compared with the 1 nmol/L AffyP2 reference model on sets of technical replicate samples (Table 1; ref. 35). Results obtained with the AffyA model strongly correlated with results obtained with the 1 nmol/L E2 AffyP2 model on the dataset with  $16 \times 2$  technical duplicates ( $\text{corr} = 0.80$ , Supplementary Fig. S4A). Differences in sample preparation protocols reduced the correlation ( $\text{corr} = 0.63$ , Supplementary Fig. S4B), illustrating the importance of standardized sample preparation procedures (36, 37). The TEAMII PCR model correlated well with the AffyP2 model on 11 technical duplicates ( $\text{corr} = 0.83$ , Supplementary Fig. S5). MDs from the fitted regression lines give an indication of the measurement error between two methods and were similar when comparing the AffyP2 1 nmol/L model versus the AffyA and TEAMII PCR models and the two AffyP2 models (MD = 3.1, 5.6, and 2.3, respectively).

### Functional ER pathway activity before and after neoadjuvant endocrine treatment

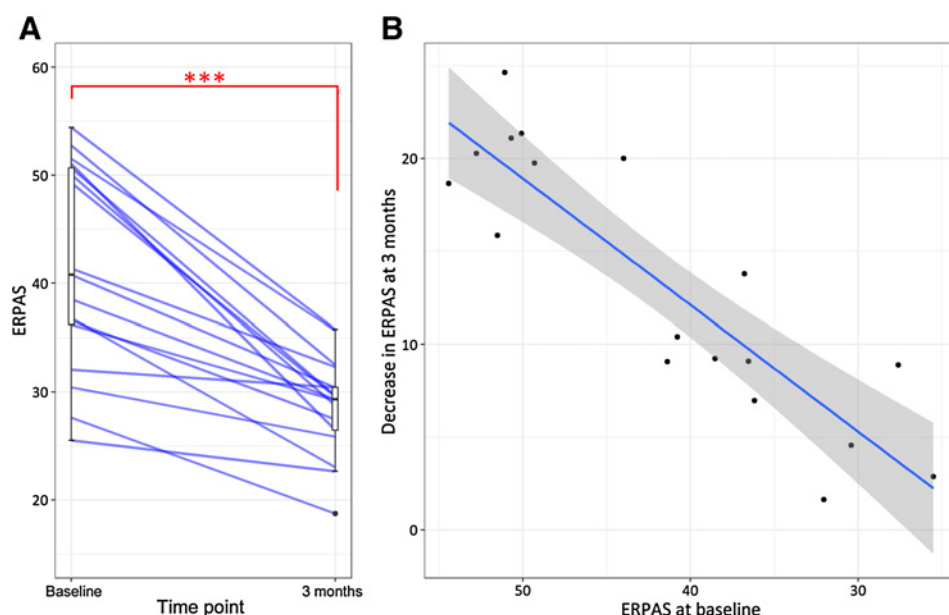
#### Edinburgh cohort

For the AffyP2 Edinburgh cohort, ERPASs decreased significantly upon letrozole treatment (41.6 vs. 28.4), mean decrease of 13.2 (CI = 9.7–16.8; paired  $t$  test  $P < 0.001$ ; Fig. 2A). ERPAS at the start of the treatment was positively correlated to decrease in ERPAS after three months of therapy, indicating that the higher the baseline ER pathway activity, the higher the decrease in ER pathway activity upon treatment ( $\text{corr} = 0.88$ ; Fig. 2B). Clinical response data were not available for this cohort.

Similarly, in the AffyA dataset of the Edinburgh cohort (Table 2; Fig. 3A and B), ERPAS decreased significantly between baseline and two weeks (46.9 vs. 39, mean decrease of 7.9, paired  $t$  test  $P < 0.001$ ) and between baseline and three months of letrozole (46.9 vs. 39.5, mean decrease of 7.5, paired  $t$  test  $P < 0.001$ ). No significant difference in ERPAS was seen between two weeks and three months of treatment, indicating an early and maintained response to letrozole for the patient group as a whole. Again, baseline ERPAS and decrease in ERPAS were positively correlated, both after two weeks and three months of treatment ( $\text{corr} = 0.74$  and  $0.83$ , respectively, Fig. 3C and D). In this cohort, clinical response data were available and both baseline ERPAS and decrease in ERPAS after two weeks of letrozole treatment were significantly higher in clinical responders to letrozole than in nonresponders ( $P = 0.02$ , Table 2; Fig. 3B and E). Upon letrozole treatment, average ERPAS decreased in responders to the



Inda et al.

**Figure 2.**

ER pathway activity scores significantly decreased following aromatase inhibitor treatment. Scores on AffyP2 Edinburgh dataset (GSE10281,  $n = 18$ ) were calculated using the 1 nmol/L E2 AffyP2 model. **A**, Individual patients' line plots of ER pathway activity scores at baseline and at 3 months (mean decrease = 13.2; 95% CI, 9.7–16.8; \*\*\* indicates paired  $t$  test  $P < 0.001$ ). **B**, ER pathway activity score at baseline versus decrease in activity score after 3 months of therapy (corr = 0.88; 95% CI, 0.71–0.96;  $P < 0.001$ ).

same low activity score level of nonresponders and remained at such level up to the 3-month measurement point (Fig. 3A, B, and F).

Using a threshold for ER pathway activity, as described before (15), enables analysis at individual patient level with respect to clinical

response to letrozole. To evaluate the predictive value of the AffyA ER pathway activity model in an unbiased way, a threshold of 42.7 was set prior to analysis. This value corresponds to an odds of 1:1, the point where the inferred probability of the ER pathway being active is 50%.

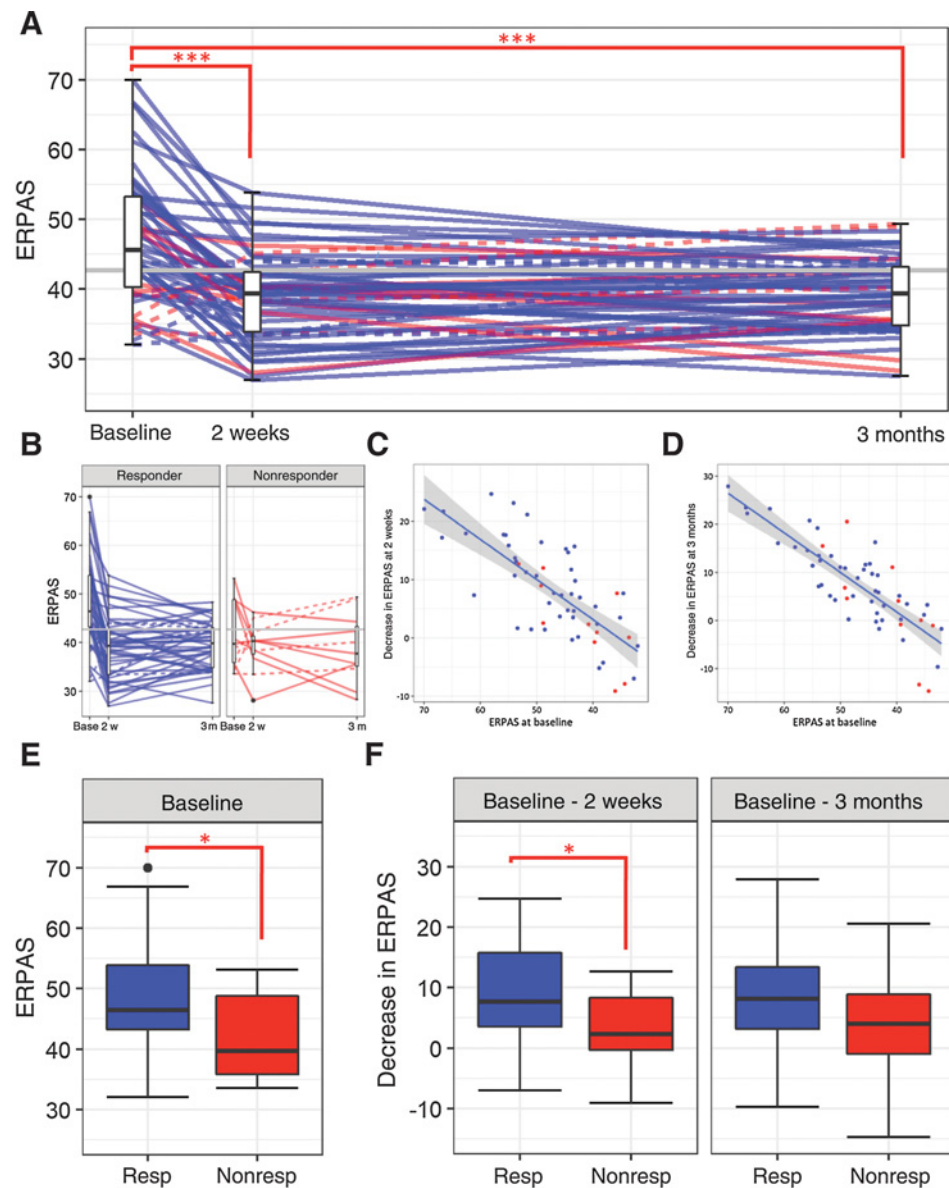
**Table 2.** Changes in ER pathway activity scores upon AI treatment.

ER pathway activity	Status		Score			Paired $t$ test (baseline vs. time point)
	Active (%)	Inactive (%)	Mean	SD	Range	
All						
Baseline	38 (69%)	17 (31%)	46.9	8.9	(32.1, 69.9)	
Two weeks	13 (24%)	42 (75%)	39.0	6.2	(26.9, 53.8)	7.9 (5.7, 10.2), <0.001
Three months	17 (31%)	38 (69%)	39.5	5.3	(27.6, 49.4)	7.5 (5.0, 9.9), <0.001
<b>Stratified by response</b>						<b><math>t</math> test (R vs. NR)</b>
Baseline						
Responders ( $n = 44$ )	34 (77%)	10 (23%)	48.2	8.9	(32.1, 69.9)	6.5 (1.2, 11.7), 0.02
Nonresponders ( $n = 11$ )	4 (36%)	7 (64%)	41.8	7.0	(33.6, 53.2)	
Two weeks						
Responders	11 (25%)	33 (75%)	39.0	6.2	(26.9, 53.8)	−0.1 (−3.9, 3.7), 0.95
Nonresponders	2 (18%)	9 (82%)	39.1	5.1	(28.1, 46.3)	
Three months						
Responders	14 (32%)	30 (68%)	39.6	4.8	(27.6, 48.3)	0.8 (−4.0, 5.7), 0.72
Nonresponders	3 (27%)	8 (72%)	38.8	7.0	(28.3, 49.4)	
<b>Decrease in ER pathway activity</b>	Direction		Decrease in score			<b><math>t</math> test (R vs. NR)</b>
All	Decrease	Increase	Mean	SD	Range	
Baseline – two weeks	47 (85%)	8 (15%)	7.9	8.3	(−9.1, 25.0)	
Baseline – three months	46 (84%)	9 (16%)	7.5	8.9	(−15.0, 28.0)	
Two weeks – three months	22 (40%)	33 (60%)	−0.47	4.9	(−12.0, 8.7)	
<b>Stratified by response</b>						
Baseline – two weeks						
Responders	39 (89%)	5 (11%)	9.3	8.0	(−7.0, 25.0)	6.6 (1.3, 11.8), 0.02
Nonresponders	8 (73%)	3 (27%)	2.7	7.2	(−9.1, 13.0)	
Baseline – three months						
Responders	38 (86%)	6 (14%)	8.6	8.1	(−9.7, 28.0)	5.6 (−1.8, 13), 0.13
Nonresponders	6 (55%)	5 (45%)	2.9	11.0	(−15.0, 21.0)	
Two weeks – three months						
Responders	17 (39%)	27 (61%)	−0.65	4.8	(−12.0, 8.7)	−0.91 (−4.9, 3.0), 0.6
Nonresponders	5 (45%)	6 (55%)	0.26	5.6	(−7.6, 8.7)	

Note: ER pathway activity score and decrease in activity score for the 55 complete cases of AffyA Edinburgh dataset (GSE20181, 44 responders and 11 nonresponders).  $t$  Tests reported as difference (CI),  $P$  value.

**Figure 3.**

ER pathway activity scores are significantly lower at baseline and 2 weeks in nonresponding than responding tumors in the AffyA Edinburgh (GSE20181) dataset. ER pathway activity was measured with the AffyA model. **A**, Individual patients' line plot of ER pathway activity scores at baseline and after 2 weeks and 3 months of treatment. Solid lines: Activity went down during treatment. Dashed lines: Activity went up during treatment. **B**, ER pathway activity score as a function of treatment time for responders (left, blue) and nonresponders (right, red). **C** and **D**, Relationship between ER pathway activity score at baseline and decrease in activity score at 2 weeks (**C**;  $\text{corr} = 0.74$ ; 95% CI, 0.6–0.84;  $P < 0.001$ ) and at 3 months (**D**;  $\text{corr} = 0.83$ ; 95% CI, 0.72–0.89;  $P < 0.001$ ) of letrozole treatment ( $n = 55$ ). **E**, Box plots of ER pathway activity score in responders and nonresponders at baseline. **F**, Decrease in ER pathway activity score, between baseline and 2 weeks (left) and between baseline and 3 months (right) of treatment. resp/blue: responders; nonresp/red: nonresponders. \*\*\*,  $t$  test  $P < 0.001$ ; \*,  $t$  test  $P < 0.05$ .



This preset value is very close to 41.5, the best cut-off point obtained by ROC analysis of the present dataset. Using the predefined 42.7 threshold, 69% of patients ( $n = 38$ ) had an active pretreatment ER pathway. This proportion decreased to 24% ( $n = 13$ ) after two weeks and slightly increased to 31% ( $n = 17$ ) after three months of treatment (Table 2). At baseline, 77% ( $n = 34$ ) of clinical responders had an active ER pathway, against only 36% ( $n = 4$ ) of nonresponders (Table 2). Accordingly, a baseline ER pathway active state was significantly associated with response to therapy ( $\chi^2 P = 0.009$ ; Table 2). Univariate logistic regression analysis reported a protective OR of 0.17 (CI = 0.04–0.69;  $P = 0.01$ ) on the dichotomous active/inactive ER pathway activity status and a corresponding protective OR of 0.35 (CI = 0.13–0.95;  $P = 0.02$ ) for an increase in 10 points in the ERPAS. As reference, relation of response to established markers (baseline tumor grade and ER Allred score) was also analyzed (Supplementary Table S3). Although tumor grade was

associated with response to therapy ( $\chi^2$  test  $P = 0.03$ ), ER Allred score was not ( $\chi^2 P = 0.2$ ). Sample size was small for reliable multivariate analysis, but initial analysis indicated that the ERPAS remained significant after adjustment for grade and Allred score (Supplementary Table S4).

Analysis of this cohort not only illustrated the expected decrease in ER pathway activity upon effective letrozole treatment, but also that roughly one third of ER-positive patients had a functionally inactive ER pathway, associated with nonresponder status. Finally, in the first two weeks of letrozole treatment, ERPAS decreased in the majority of patients (85%,  $n = 47$ ), while between two weeks and three months, ERPAS slightly increased in the majority of patients (60%,  $n = 33$ ; Table 2). In line, the observed decrease in ERPAS from baseline to two weeks was higher in responders than nonresponders (9.3 vs. 2.7;  $P = 0.02$ ), and remained higher in responders after three months of treatment (8.6 vs. 2.9,  $P = 0.13$ ).

**Table 3.** ER pathway activity score at baseline and tumor resection for the TEAM Ila cohort.

	Sample availability			ER pathway activity score baseline				Decrease baseline-resection				Resection			
	Baseline only	Paired	Resection only	n	Mean	SD	Range	n	Mean	SD	Range	n	Mean	SD	Range
All	21	28	20	49	42.2	11.6	(9.9–62.2)	28	9.1	12.8	(–11.2–31.5)	48	33.9	14.0	(5.6–59.8)
<b>Stratified by response assessed by palpation at last measurement</b>															
All	15	23	17	38	43.3	10.9	(18.9–62.2)	23	9.0	13.3	(–11.2–31.5)	40	32.6	13.5	(5.6–59.8)
CR	5	6	3	11	47.6	7.8	(38.9–62.2)	6	20.0	9.0	(7.1–27.7)	9	28.7	10.1	(13.4–46.1)
PR	5	7	8	12	41.8	13.0	(18.9–56.3)	7	6.4	11.7	(–9.2–25.4)	15	31.8	16.5	(5.6–59.8)
SD	4	8	5	12	44.5	9.1	(25.8–56.0)	8	5.4	15.2	(–11.2–31.5)	13	38.9	10.2	(20.3–54.4)
PD	1	2	1	3	28.4	6.5	(23.7–35.7)	2	–0.16	0.28	(0.35–0.04)	3	20.7	7.3	(12.4–26.1)

Note: Measurements are from the TEAMII PCR model. Decrease in ER pathway activity score was calculated for paired samples from the same patient. Sample availability indicated as baseline only: number of patients with only a biopsy sample; paired: number of patients with paired biopsy and resection sample; resection only: number of patients with only resection sample.

Abbreviation: n, number of samples available for pathway analysis.

### TEAM Ila cohort

For the TEAM Ila cohort (Table 3), the average ERPAS was 42.2 at baseline ( $n = 49$ ) and decreased to 33.9 ( $n = 48$ ) after exemestane therapy. In the 28 paired samples (before and after therapy), mean decrease in ERPAS was 9.1 (paired  $t$  test  $P < 0.001$ ). In this cohort, again a positive but weak correlation was found between baseline ERPAS and decrease in ERPAS during treatment (corr = 0.29; Supplementary Fig. S6).

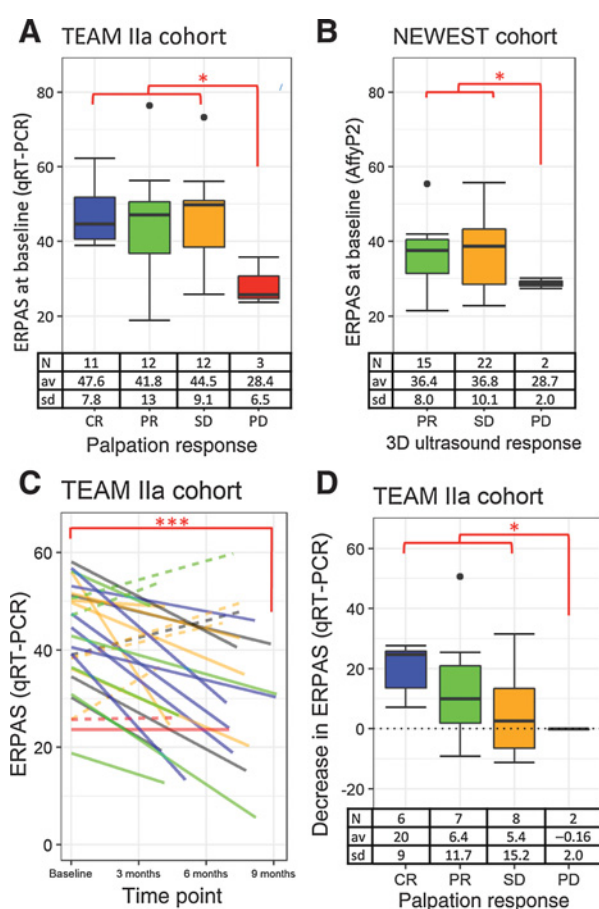
To test the value of the TEAMII PCR ER pathway model to predict response to aromatase inhibitors (AI), activity scores were correlated to decrease in tumor size assessed by manual palpation (Fig. 4D; Supplementary Table S5). Patients with PD during exemestane treatment had a significantly lower ERPAS at baseline (28.4,  $n = 3$ ) compared with patients with non-PD (44.6,  $n = 35$ );  $t$  test  $P = 0.03$  (Supplementary Table S5, response assessed at last measurement). A relation between pretreatment ERPAS and clinical response was already present at three months exemestane (non-PD = 44.6,  $n = 27$  vs. PD = 28.7,  $n = 3$ ;  $P = 0.04$ , Supplementary Table S5, response assessed at 3 months).

Palpation-based response assessment was available for 23 patients with corresponding paired biopsy/resection activity scores (Fig. 4A and C). During exemestane treatment, ERPAS decreased in all six patients with complete remission (CR). In two of seven patients with partial response (PR) and in three of eight patients with stable disease (SD), an increase in ERPAS was measured after neoadjuvant therapy, indicating failure of blocking ER pathway activity at least at the time of surgical resection. For the two patients with PD with available paired samples, ERPAS was low before and had not changed after treatment. Decrease in ERPAS was higher in non-PD (9.9,  $n = 21$ ) than PD (–0.16,  $n = 2$ ), paired  $t$  test  $P = 0.003$  (Fig. 4C). Although ERPAS did not differ significantly at baseline for CR, PR, and SD patients, a clear distinction was observed between CR/PR and PD patients (Fig. 4A). In addition, decrease in ERPAS was larger in CR patients, becoming gradually smaller in PR and SD patients (Fig. 4D).

For this cohort, available clinical data and sample size was too limited for extensive analysis. However, brief examination of the association of response to established risk markers did not indicate any of the available markers were associated to PD, and ERPAS remained associated to PD after adjustment.

### NEWEST cohort

For the NEWEST cohort, Affymetrix data were only available from biopsies prior to start of neoadjuvant fulvestrant. Data were analyzed using the AffyP2 ER model (Fig. 4B). Baseline ERPAS was 28.7 in the 2

**Figure 4.**

In patients with progressive disease, ER pathway activity scores are significantly lower and do not change after treatment. **A**, ER pathway activity score at baseline in patients of the TEAM Ila cohort measured with the TEAMII PCR model. **B**, ER pathway activity score at baseline in patients of the NEWEST cohort measured with the AffyP2 model. **C**, TEAM Ila cohort individual ER pathway activity score as function of treatment time. **D**, TEAM Ila cohort, decrease in ER pathway activity score from baseline to tumor resection, stratified by response assessed by palpation at last measurement. CR, blue: complete remission; PR, green: partial remission; SD, orange: stable disease; PD, red: progressive disease. Solid lines: Activity went down during treatment. Dashed lines: Activity went up during treatment. \*\*\*,  $t$  test  $P < 0.001$ ; \*,  $t$  test  $P < 0.05$ .

PD samples versus 36.6 in the 37 non-PD patients (difference of 8.0 CI = 2.2–13.7;  $t$  test  $P = 0.02$ ), similar to results of the TEAM IIA study. Again, there was no significant difference in ERPAS between PR and SD patients.

#### Relation between ER pathway activity and PR IHC staining

Combined ER/PR positive IHC staining is generally thought to be a better indicator of response to endocrine treatment than ER status alone. Therefore, combined positive staining might be a more accurate predictor of an active ER pathway. Indeed, the PR positive biopsy samples of the TEAM IIA cohort ( $n = 36$ , 73%) had significantly higher ERPAS than the ER<sup>+</sup>/PR<sup>−</sup> samples (48.7 vs. 34.3, two sample  $t$  test  $P = 0.003$ ) and the decrease in ERPAS after treatment was larger in the ER<sup>+</sup>/PR<sup>+</sup> group, although this did not reach significance (Supplementary Table S6). However, baseline PR protein staining alone did not correlate with response to AI therapy, neither in the TEAM IIA cohort (this study) nor in the Edinburgh cohort (reported in ref. 38).

#### Mutation analysis of ESR1 and PIK3CA genes in TEAM IIA cohort

ESR1 and PIK3CA mutations could be assessed in 15 samples (13 patients) of the TEAM IIA study (Supplementary Figs. S7 and S8); remaining samples were of insufficient quality. Although nonsynonymous ESR1 SNVs were only found in patients with partial response or stable disease (Supplementary Table S7), no literature evidence as to their functionality was found. A known PIK3CA (H1047R) activating mutation was detected in one CR and one SD patient.

## Discussion

We previously described the development of a new method to quantitatively measure activity of the ER pathway in a tissue sample using a computational model that interprets measured ER target gene mRNA levels (15). In the current study, its use to predict response to neoadjuvant endocrine treatment in patients with ER-positive breast cancer was evaluated, analyzing two clinical studies from Edinburgh (14, 22), the Dutch TEAM IIA cohort (25), and the NEWEST study (24). For this purpose, the ER pathway model was adjusted to match sensitivity to E2 concentrations in cancer tissue, and adapted to the different mRNA measurement platforms used in these clinical studies. After freezing the models, analysis of the independent patient cohorts was performed to provide per sample a quantitative ERPAS.

#### Endocrine treatment reduced ER pathway activity

In all three clinical studies for which pre- and posttreatment data were available, endocrine treatment induced a decrease in ERPAS, and the decrease was already maximal after two weeks of treatment. In the studies for which clinical response data were available, the ERPAS prior to treatment correlated with clinical response. In the AffyA Edinburgh cohort, a high ERPAS was associated with favorable clinical response to letrozole. In the TEAM IIA and NEWEST studies, a low ERPAS was associated with progressive disease under exemestane and fulvestrant treatment, respectively. In general, patients with higher activity scores responded better to endocrine treatment than patients with lower activity scores, and treatment-induced decrease in ERPAS was largest in clinical responders and smallest in progressive disease patients. These observations are in accordance with broad evidence that AI and fulvestrant therapies are effective in patients with an active ER pathway driving tumor growth, by interfering with production of estradiol, and by blocking of ER transcriptional activity and degrading ER, respectively (9, 39). An inactive or minimally active ER pathway is expected to be associated with primary resistance and progressive

disease under endocrine therapy, as we observed. Results are also in line with our earlier finding that patients with ER-positive breast cancer with low ERPASs, treated with adjuvant tamoxifen, have a shorter relapse-free survival (15).

In the TEAM IIA study, ERPAS was not significantly different among the CR, PR, and SD groups. A contributing factor may have been inaccuracy in assessment of tumor size by manual palpation, which was performed by different MDs at nonfixed time points during treatment. Nevertheless, a detailed comparison of tumor size at resection versus estimated size by palpation, mammography, US, and MRI in the TEAM IIA cohort suggested palpation as most accurate measurement method (40). In addition, in the NEWEST study, three-dimensional ultrasound assessment of tumor volume was used to assess clinical response, and again, a low ERPAS was associated with PD, while ERPAS could not statistically separate PR and SD. However, in both clinical studies, best responder patients (respectively CR and PR) were clearly distinguishable from PD patients by higher activity scores.

Positive ER/PR IHC staining is generally thought to be a more reliable indicator of response to endocrine therapy than positive ER staining alone. However, although PR staining did correlate ERPAS, it did not correlate with response to AI, indicating that combined ER/PR IHC alone is insufficient to decide on an active ER pathway and endocrine treatment, in agreement with clinical experience (41). This is likely due to the indirect relationship between ER transcriptional activity and expression level of the actual PR protein (42).

The Allred score for ER IHC staining has also been described as a predictive marker for neoadjuvant hormonal therapy response, with improved response at Allred scores higher than 5 (1). In the AffyA Edinburgh cohort for which this score was available, no relation with response to therapy was found, probably due to intentional preselection bias toward high Allred scores to enrich the responders group (38).

#### Persistent ER pathway activity under AI treatment

In a subgroup of patients from the AffyA Edinburgh and TEAM IIA cohorts (16% and 25%, respectively), ERPAS had increased at the end of AI treatment, indicating failure of blocking ER pathway activity, at least at the time of surgical resection or last biopsy. Possible explanations for measuring persistent ER pathway activity under AI are lack of compliance, stopping therapy prior to surgical resection, tumor heterogeneity, and emerging endocrine resistance. In both studies, patients were followed closely and compliance was estimated as high by the treating oncologists; however, noncompliance cannot be excluded with certainty. Tumor heterogeneity with respect to ER active and ER inactive cancer cell clones is another explanation, as shown recently in a preliminary study (43). A side study comparing activity scores in different areas of resected tumor from six TEAM IIA patients showed a variation in the ERPAS of 9 points or more in four patients (Supplementary Fig. S9). Resistance mechanisms such as ER activating mutations and activation of other tumor driving signaling pathways are well-known consequences of endocrine therapy, and the incidence of ER-activating mutations lies around 12% after treatment with aromatase inhibitors (44, 45). The observed increase in ERPAS between two weeks and three months treatment in the AffyA Edinburgh study, especially in patients with an initial reduction in activity score, is suggestive of ER-activating ESR1 mutations, unfortunately, no mutation information was available. In the TEAM IIA study, due to lack of sufficient tissue, ESR1 mutations could only be assessed in a few samples by targeted sequencing and only ESR1 SNVs with unknown functionality and unrelated to AI resistance or clinical response were



identified. Sequencing of *PIK3CA* mutations revealed two known *PIK3CA* activating mutations, also without relation to response. These results emphasize the challenge of interpreting mutations with respect to functional impact, in line with recent clinical findings (46).

### ER pathway model performance using different mRNA measurement techniques

An important reason for successful adaptation of the ER pathway model to other mRNA measurement platforms than the original Affymetrix U133Plus2.0, is the Bayesian network model approach based on causal relationships between the ER transcription factor and well-established ER target genes (15, 16). The differences between this knowledge-based approach to develop signaling pathway tests, and data-driven methods, have been described and discussed before (15, 19, 47, 48). In brief, data-driven efforts to generate pathway gene expression signatures, such as gene set enrichment analysis and DAVID, have been typically based on discovery of noncausal associations between expressed genes and a pathway, by analyzing datasets with more or less specified relationships to the pathway (49, 50). Such methods are prone to finding spurious associations and carry a high risk of overfitting, which interferes with biological validation and performance on independent datasets and with adaptation to other gene measurement platforms (51). In contrast, the Bayesian ER pathway model was biologically validated, can calculate the ERPAS of an individual sample despite variations in the expressed target gene subset, and its performance is relatively independent of mRNA measurement platform used. The latter is illustrated by the highly comparable results obtained by analysis of the different patient cohorts, where ERPAS was measured using different mRNA measurement platforms. For example in the TEAM IIa and NEWEST cohorts, a low ERPAS predicted progressive disease under endocrine therapy, irrespective of being measured on fresh-frozen samples with Affymetrix microarrays, or on FFPE samples with qRT-PCR.

### Predicting response to endocrine therapy

Despite strongly positive ER staining, some patients fail to respond to neoadjuvant endocrine therapy, potentially resulting in progressive disease. By measuring ER pathway activity, we were able to identify such patients based on their low ERPAS. By providing additional evidence that ER-positive breast cancers do not always have high ER pathway activity, we provide a rational explanation for the clinical issue of nonresponders. Analysis of three independent clinical breast cancer cohorts confirmed the potential value of measuring functional ER pathway activity to predict response to endocrine therapy. The Bayesian computational models for ER pathway activity, adapted to different measurement platforms, revealed comparable clinical results on fresh-frozen tissue as well as FFPE samples. The ERPAS has clinical value as a continuous measure: the higher the score, the more likely

that the ER pathway was active in the analyzed sample and the more likely that the patient responded to antihormonal treatment. In a clinical sample consisting of a mixture of cells, an absolute ER pathway activity threshold is arbitrary, because the activity score represents averaged ER pathway activity in the cell mixture, thus depending on percentage of cancer cells and their level of ER pathway activity. In the future, a clinically useful approach might be the use of tertiles of activity scores, allowing middle tertile scores to indicate uncertain treatment response.

The frequently extremely small FFPE samples from pretreatment biopsies reflect the routine diagnostic situation and are a point of concern. Current developments are directed toward improvement of signaling pathway analysis on such samples. Further clinical validation of the ER pathway test is ongoing, as well as elucidating the role of other signaling pathways, such as the PI3K pathway, in hormonal resistance (19, 48).

### Disclosure of Potential Conflicts of Interest

J. Martens reports receiving commercial and other research support from Philips Research, Pamgene, Therawis, and Sanofi. J.R. Kroep reports receiving commercial research support from Philips Research. W. Verhaegh, A. van de Stolpe, and M.A. Inda are listed as inventors on patent WO 2013/011479 (Patent applicant: Koninklijke Philips). No potential conflicts of interest were disclosed by the other authors.

### Authors' Contributions

**Conception and design:** M.A. Inda, P.J.K. Kuppen, A. Charehbili, J.W.M. Martens, A. van de Stolpe

**Development of methodology:** M.A. Inda, E.C. den Biesen-Timmermans, B. van der Burg, W. Verhaegh, A. van de Stolpe

**Acquisition of data (provided animals, acquired and managed patients, provided facilities, etc.):** P.J.K. Kuppen, A. Charehbili, A. van Brussel, S.E. Fruytier, S. Kloet, B. van der Burg, A.K. Turnbull, J.M. Dixon, J.R. Kroep, C.J.H. van de Velde

**Analysis and interpretation of data (e.g., statistical analysis, biostatistics, computational analysis):** M.A. Inda, E.J. Blok, A. Charehbili, E.C. den Biesen-Timmermans, S. Kloet, J.W.M. Martens, A.H. Sims, C.J.H. van de Velde, A. van de Stolpe

**Writing, review, and/or revision of the manuscript:** M.A. Inda, E.J. Blok, P.J.K. Kuppen, E.C. den Biesen-Timmermans, A. van Brussel, E.M.-K. Kranenbarg, J.W.M. Martens, A.H. Sims, A.K. Turnbull, J.M. Dixon, J.R. Kroep, C.J.H. van de Velde, A. van de Stolpe

**Administrative, technical, or material support (i.e., reporting or organizing data, constructing databases):** A. Charehbili, E.M.-K. Kranenbarg, S. Kloet, A.K. Turnbull, J.R. Kroep

**Study supervision:** P.J.K. Kuppen, J.R. Kroep, C.J.H. van de Velde, A. van de Stolpe

**Other (data related to steroid measurement with bioassays):** B. van der Burg

**Other (PI of the clinical trial):** C.J.H. van de Velde

The costs of publication of this article were defrayed in part by the payment of page charges. This article must therefore be hereby marked *advertisement* in accordance with 18 U.S.C. Section 1734 solely to indicate this fact.

Received March 25, 2019; revised August 8, 2019; accepted November 8, 2019; published first November 14, 2019.

### References

- Abrial C, Durando X, Mouret-Reynier MA, Thivat E, Bayet-Robert M, Nayl B, et al. Role of neo-adjuvant hormonal therapy in the treatment of breast cancer: a review of clinical trials. *Int J Gen Med* 2009;2:129–40.
- Blok EJ, Derks MGM, van der Hoeven JJM, van de Velde CJH, Kroep JR. Extended adjuvant endocrine therapy in hormone-receptor positive early breast cancer: current and future evidence. *Cancer Treat Rev* 2015;41:271–6.
- Davies C, Pan H, Godwin J, Gray R, Arriagada R, Raina V, et al. Long-term effects of continuing adjuvant tamoxifen to 10 years versus stopping at 5 years after diagnosis of oestrogen receptor-positive breast cancer: ATLAS, a randomised trial. *Lancet* 2013;381:805–16.
- Harvey JM, Clark GM, Osborne CK, Allred DC. Estrogen receptor status by immunohistochemistry is superior to the ligand-binding assay for predicting response to adjuvant endocrine therapy in breast cancer. *J Clin Oncol* 1999;17:1474–81.
- Hammond MEH, Hayes DF, Dowsett M, Allred DC, Hagerty KL, Badve S, et al. American Society of Clinical Oncology/College of American Pathologists guideline recommendations for immunohistochemical testing of estrogen and progesterone receptors in breast cancer. *J Clin Oncol* 2010;28:2784–95.
- Senkus E, Kyriakides S, Ohno S, Penault-Llorca F, Poortmans P, Rutgers E, et al. Primary breast cancer: ESMO Clinical Practice Guidelines for diagnosis, treatment and follow-up. *Ann Oncol* 2015;26 Suppl 5:v8–30.

## ERPAS to Predict Response to Endocrine Therapy

7. Yi M, Huo L, Koenig KB, Mittendorf EA, Meric-Bernstam F, Kuerer HM, et al. Which threshold for ER positivity? A retrospective study based on 9639 patients. *Ann Oncol* 2014;25:1004–11.
8. Selli C, Dixon JM, Sims AH. Accurate prediction of response to endocrine therapy in breast cancer patients: current and future biomarkers. *Breast Cancer Res* 2016;18:118.
9. Spring LM, Gupta A, Reynolds KL, Gadd MA, Ellisen LW, Isakoff SJ, et al. Neoadjuvant endocrine therapy for estrogen receptor-positive breast cancer. *JAMA Oncol* 2016;2:1477–86.
10. Jeselsohn R, Buchwalter G, De Angelis C, Brown M, Schiff R. ESR1 mutations—a mechanism for acquired endocrine resistance in breast cancer. *Nat Rev Clin Oncol* 2015;12:573–83.
11. Ciruelos Gil EM. Targeting the PI3K/AKT/mTOR pathway in estrogen receptor-positive breast cancer. *Cancer Treat Rev* 2014;40:862–71.
12. Ma CX, Bose R, Ellis MJ. Prognostic and predictive biomarkers of endocrine responsiveness for estrogen receptor positive breast cancer. *Adv Exp Med Biol* 2016;882:125–54.
13. Renoir JM, Marsaud V, Lazennec G. Estrogen receptor signaling as a target for novel breast cancer therapeutics. *Biochem Pharmacol* 2013;85:449–65.
14. Turnbull AK, Arthur LM, Renshaw L, Larionov AA, Kay C, Dunbier AK, et al. Accurate prediction and validation of response to endocrine therapy in breast cancer. *J Clin Oncol* 2015;33:2270–8.
15. Verhaegh W, van Ooijen H, Inda MA, Hatzis P, Versteeg R, Smid M, et al. Selection of personalized patient therapy through the use of knowledge-based computational models that identify tumor-driving signal transduction pathways. *Cancer Res* 2014;74:2936–45.
16. Verhaegh W, van de Stolpe A. Knowledge-based computational models. *Oncotarget* 2014;5:5196–7.
17. Hochstenbach K, van Leeuwen DM, Gmuender H, Gottschalk RW, Løvik M, Granum B, et al. Global gene expression analysis in cord blood reveals gender-specific differences in response to carcinogenic exposure in utero. *Cancer Epidemiol Biomarkers Prev* 2012;21:1756–67.
18. Lemmen JG, van den Brink CE, Legler J, van der Saag PT, van der Burg B. Detection of oestrogenic activity of steroids present during mammalian gestation using oestrogen receptor alpha- and oestrogen receptor beta-specific in vitro assays. *J Endocrinol* 2002;174:435–46.
19. van Ooijen H, Hornsvelt M, Dam-de Veen C, Velter R, Dou M, Verhaegh W, et al. Assessment of functional phosphatidylinositol 3-kinase pathway activity in cancer tissue using forkhead box-O target gene expression in a knowledge-based computational model. *Am J Pathol* 2018;188:1956–72.
20. Gautier L, Cope L, Bolstad BM, Irizarry RA. affy-analysis of Affymetrix GeneChip data at the probe level. *Bioinformatics* 2004;20:307–15.
21. McCall MN, Bolstad BM, Irizarry RA. Frozen robust multarray analysis (fRMA). *Biostatistics* 2010;11:242–53.
22. Creighton CJ, Li X, Landis M, Dixon JM, Neumeister VM, Sjolund A, et al. Residual breast cancers after conventional therapy display mesenchymal as well as tumor-initiating features. *Proc Natl Acad Sci U S A* 2009;106:13820–5.
23. Miller WR, Larionov A, Anderson TJ, Evans DB, Dixon JM. Sequential changes in gene expression profiles in breast cancers during treatment with the aromatase inhibitor, letrozole. *Pharmacogenomics J* 2012;12:10–21.
24. Knudsen S, Jensen T, Hansen A, Mazin W, Lindemann J, Kuter I, et al. Development and validation of a gene expression score that predicts response to fulvestrant in breast cancer patients. *PLoS One* 2014;9:e87415.
25. Fontein DBY, Charehbili A, Nortier JWR, Meershoek-Klein Kranenbarg E, Kroep JR, Putter H, et al. Efficacy of six month neoadjuvant endocrine therapy in postmenopausal, hormone receptor-positive breast cancer patients—a phase II trial. *Eur J Cancer* 2014;50:2190–200.
26. Espina V, Wulfschuh JD, Calvert VS, VanMeter A, Zhou W, Coukos G, et al. Laser-capture microdissection. *Nat Protoc* 2006;1:586–603.
27. Lin Z, Reierstad S, Huang CC, Bulun SE. Novel estrogen receptor-alpha binding sites and estradiol target genes identified by chromatin immunoprecipitation cloning in breast cancer. *Cancer Res* 2007;67:5017–24.
28. Ross-Innes CS, Stark R, Teschendorff AE, Holmes KA, Ali HR, Dunning MJ, et al. Differential estrogen receptor binding is associated with clinical outcome in breast cancer. *Nature* 2012;481:389–93.
29. Wardell SE, Kazmin D, McDonnell DP. Research resource: Transcriptional profiling in a cellular model of breast cancer reveals functional and mechanistic differences between clinically relevant SERM and between SERM/estrogen complexes. *Mol Endocrinol* 2012;26:1235–48.
30. Bourdeau V, Deschenes J, Laperriere D, Aid M, White JH, Mader S. Mechanisms of primary and secondary estrogen target gene regulation in breast cancer cells. *Nucleic Acids Res* 2008;36:76–93.
31. Chang EC, Charn TH, Park S-H, Helferich WG, Komm B, Katzenellenbogen JA, et al. Estrogen receptors alpha and beta as determinants of gene expression: influence of ligand, dose, and chromatin binding. *Mol Endocrinol* 2008;22:1032–43.
32. Langmead B, Trapnell C, Pop M, Salzberg SL. Ultrafast and memory-efficient alignment of short DNA sequences to the human genome. *Genome Biol* 2009;10:R25.
33. Geisler J. Breast cancer tissue estrogens and their manipulation with aromatase inhibitors and inactivators. *J Steroid Biochem Mol Biol* 2003;86:245–53.
34. Honma N, Saji S, Hirose M, Horiguchi S, Kuroi K, Hayashi S, et al. Sex steroid hormones in pairs of tumor and serum from breast cancer patients and pathobiological role of androstene-3beta, 17beta-diol. *Cancer Sci* 2011;102:1848–54.
35. Symmans WF, Hatzis C, Sotiriou C, Andre F, Peintinger F, Regitnig P, et al. Genomic index of sensitivity to endocrine therapy for breast cancer. *J Clin Oncol* 2010;28:4111–9.
36. Holman TJ, Wilson MH, Kenobi K, Dryden IL, Hodgman TC, Wood AT, et al. Statistical evaluation of transcriptomic data generated using the Affymetrix one-cycle, two-cycle and IVT-Express RNA labelling protocols with the Arabidopsis ATH1 microarray. *Plant Methods* 2010;6:9.
37. Wilson CL, Pepper SD, Hey Y, Miller CJ. Amplification protocols introduce systematic but reproducible errors into gene expression studies. *BioTechniques* 2004;36:498–506.
38. Miller WR, White S, Dixon JM, Murray J, Renshaw L, Anderson TJ. Proliferation, steroid receptors and clinical/pathological response in breast cancer treated with letrozole. *Br J Cancer* 2006;94:1051–6.
39. Nathan MR, Schmid P. A review of fulvestrant in breast cancer. *Oncol Ther* 2017;5:17–29.
40. Blok EJ, Charehbili A, Kroep JR, Seynaeve CM, van de Velde C, Kuppen PJK. Abstract P6-01-05: radiological evaluation of neo-adjuvant endocrine therapy in hormone-receptor positive early breast cancer. In: *Proceedings of the Thirty-Eighth Annual CTRC-AACR San Antonio Breast Cancer Symposium: 2015 Dec 8–12; San Antonio, TX. Philadelphia (PA): AACR. Abstract nr P6-01-05.*
41. Ma CX, Sanchez CG, Ellis MJ. Predicting endocrine therapy responsiveness in breast cancer. *Oncology (Williston Park)* 2009;23:133–42.
42. Reiner GCA, Katzenellenbogen BS. Characterization of estrogen and progesterone receptors and the dissociated regulation of growth and progesterone receptor stimulation by estrogen in MDA-MB-134 human breast cancer cells. *Cancer Res* 1986;46:1124–31.
43. Verhaegh W, van Brussel A, Moelans C, Inda MA, Gil J, Bikker JW, et al. Heterogeneity in signaling pathway activity within primary breast cancer and between primary and metastases. *J Clin Oncol* 2019;37:589.
44. Jeselsohn R, Yelensky R, Buchwalter G, Frampton G, Meric-Bernstam F, Gonzalez-Angulo AM, et al. Emergence of constitutively active estrogen receptor- $\alpha$  mutations in pretreated advanced estrogen receptor-positive breast cancer. *Clin Cancer Res* 2014;20:1757–67.
45. Robinson DR, Wu YM, Vats P, Su F, Lonigro RJ, Cao X, et al. Activating ESR1 mutations in hormone-resistant metastatic breast cancer. *Nat Genet* 2013;45:1446–51.
46. Massard C, Michiels S, F  rt   C, Le Deley MC, Lacroix L, Hollebecque A, et al. High-throughput genomics and clinical outcome in hard-to-treat advanced cancers: results of the MOSCATO 01 trial. *Cancer Discov* 2017;7:586–95.
47. van de Stolpe A. Quantitative measurement of functional activity of the PI3K signaling pathway in cancer. *Cancers* 2019;11. doi: 10.3390/cancers11030293..
48. van de Stolpe A, Holtzer L, van Ooijen H, de Inda MA, Verhaegh W. Enabling precision medicine by unravelling disease pathophysiology: quantifying signal transduction pathway activity across cell and tissue types. *Sci Rep* 2019;9:1603.
49. Subramanian A, Tamayo P, Mootha VK, Mukherjee S, Ebert BL, Gillette MA, et al. Gene set enrichment analysis: a knowledge-based approach for interpreting genome-wide expression profiles. *Proc Natl Acad Sci U S A* 2005;102:15545–50.
50. Huang DW, Sherman BT, Lempicki RA. Systematic and integrative analysis of large gene lists using DAVID bioinformatics resources. *Nat Protoc* 2009;4:44–57.
51. van Hartskamp M, Consoli S, Verhaegh W, Petkovic M, van de Stolpe A. Artificial intelligence in clinical health care applications: viewpoint. *Interact J Med Res* 2019;8:e12100.

# Molecular Cancer Therapeutics

## Estrogen Receptor Pathway Activity Score to Predict Clinical Response or Resistance to Neoadjuvant Endocrine Therapy in Primary Breast Cancer

Márcia A. Inda, Erik J. Blok, Peter J.K. Kuppen, et al.

*Mol Cancer Ther* 2020;19:680-689. Published OnlineFirst November 14, 2019.

**Updated version** Access the most recent version of this article at:  
doi:[10.1158/1535-7163.MCT-19-0318](https://doi.org/10.1158/1535-7163.MCT-19-0318)

**Supplementary Material** Access the most recent supplemental material at:  
<http://mct.aacrjournals.org/content/suppl/2019/11/14/1535-7163.MCT-19-0318.DC1>

**Cited articles** This article cites 48 articles, 13 of which you can access for free at:  
<http://mct.aacrjournals.org/content/19/2/680.full#ref-list-1>

**E-mail alerts** [Sign up to receive free email-alerts](#) related to this article or journal.

**Reprints and Subscriptions** To order reprints of this article or to subscribe to the journal, contact the AACR Publications Department at [pubs@aacr.org](mailto:pubs@aacr.org).

**Permissions** To request permission to re-use all or part of this article, use this link  
<http://mct.aacrjournals.org/content/19/2/680>.  
Click on "Request Permissions" which will take you to the Copyright Clearance Center's (CCC) Rightslink site.