



PHILIPS

dStream Breast 16ch

MR coils

Designed for **superb diagnostic performance**

dS Breast 16ch coil for 1.5T and 3.0T systems with dStream

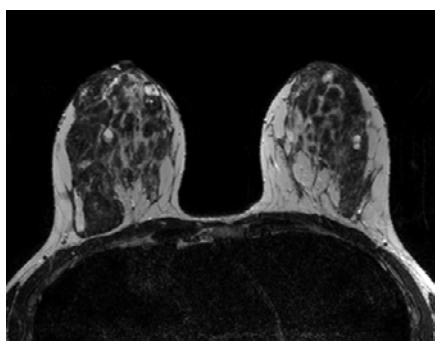
Key benefits

- Designed for high spatial and temporal resolution
- Provides coverage deep into the axilla area
- Promotes excellent patient comfort with headrest and abdomen ramp

A dedicated closed design breast coil which can be used alone or in combination with FlexTrak Mammo. The coil is designed to deliver high performance in coverage, image resolution and imaging speed. An adjustable head rest with patient mirror and soft patient ramp are included to promote patient comfort.

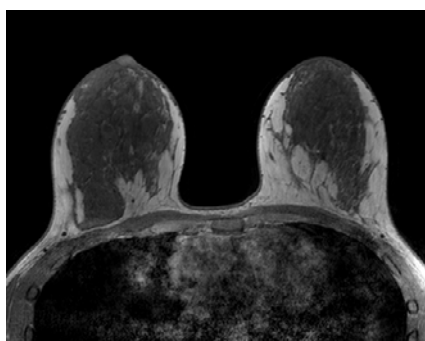
dStream Breast 16ch coil

Coverage	Bilateral
Maximum number of channels	16
Main applications	Breast
Coil solution type	Dedicated
Data sampling	dStream digital broadband
Coil connection	dStream Interface
SENSE parallel imaging	dS SENSE enhanced parallel imaging performance



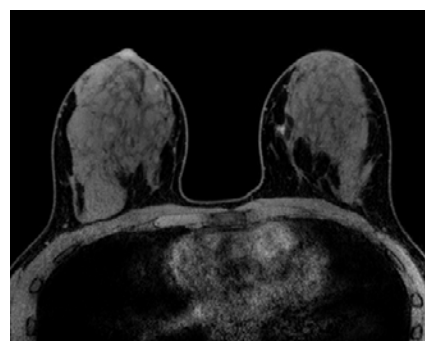
Axial T2w TSE

Resolution: 1.0 x 1.0 x 1.8 mm
 Scan time: 3:00 min
 Ingenia 3.0T
 Courtesy:
 St. Jan Hospital, Bruges, Belgium



Axial T1w TFE 3D

Resolution: 0.9 x 0.9 x 0.9 mm
 Scan time: 0:38 min
 Ingenia 3.0T
 Courtesy:
 St. Jan Hospital, Bruges, Belgium



Axial eTHRIVE

Resolution: 0.9 x 0.9 x 0.9 mm
 Scan time: 1:31 min
 Ingenia 3.0T
 Courtesy:
 St. Jan Hospital, Bruges, Belgium

