



**PHILIPS**

dStream Flex Breast

MR coils

## Easy and effective **breast imaging**

dS Flex Breast coil for 1.5T and 3.0T systems with dStream

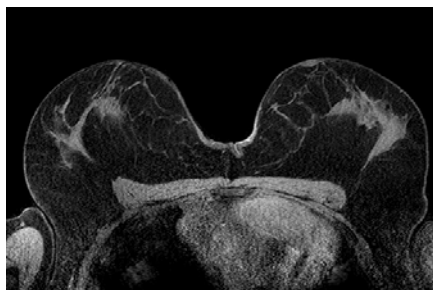
### **Key benefits**

- Designed for bilateral breast imaging
- Supports routine breast imaging
- Soft mattress for promoting patient comfort

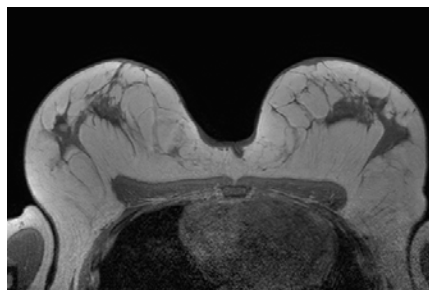
An easy and effective solution for bilateral breast imaging. The solution comprises a dedicated, comfortable positioning mattress and two large flexible general-purpose coils. Combined with the FlexCoverage Posterior coil they allow bilateral coverage with up to 8 channels. Patient positioning is simple, with a high level of patient comfort.

# dStream Flex Breast coil

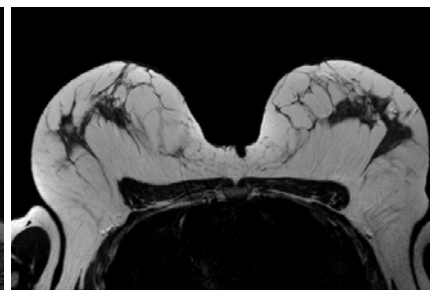
Coverage	Bilateral
Maximum number of channels	8
Main applications	Breast
Coil solution type	Dedicated
Data sampling	dStream digital broadband
Coil connection	dStream Interface
SENSE parallel imaging	dS SENSE enhanced parallel imaging performance



**Axial T2w TSE**  
Resolution: 1.0 x 1.0 x 3.0 mm  
Scan time: 4:05 min  
Ingenia 3.0T



**Axial T1w FFE**  
Resolution: 1.0 x 1.0 x 3.0 mm  
Scan time: 1:17 min  
Ingenia 3.0T



**Axial eTHRIVE**  
Resolution: 1.0 x 1.0 x 1.0 mm  
Scan time: 1:17 min  
Ingenia 3.0T

