



PHILIPS

dStream Pediatric
NeuroSpine 8ch

MR coils

High SNR for your **pediatric brain and spine studies**

dS Ped NeuroSpine 8ch coil for 1.5T and 3.0T systems with dStream

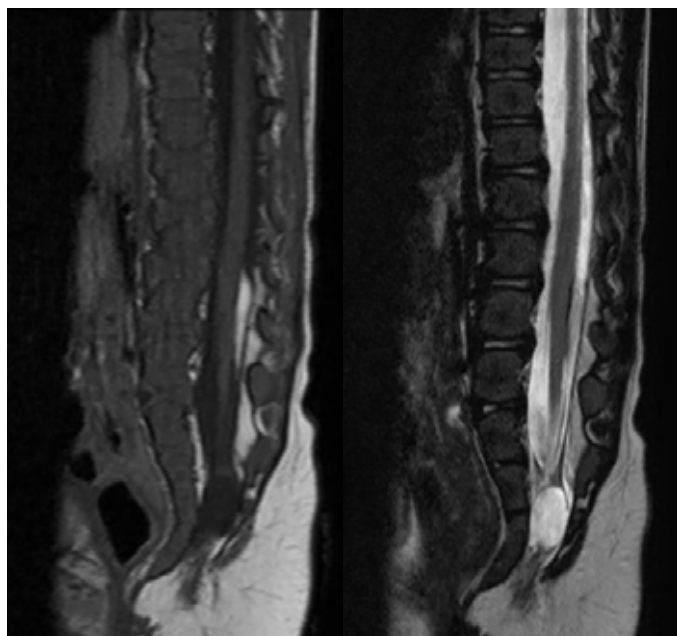
Key benefits

- Open-design 8-element coil which enables dS SENSE acceleration
- Dedicated pediatric ExamCards developed by the Philips MRI pediatric community
- High signal-to-noise ratio

The dStream (dS) Pediatric NeuroSpine coil is an 8-element coil for high resolution pediatric neuro and spine imaging. The coil is optimized for neonates, but will accommodate pediatric patients weighing up to 10 kilograms. This coil is cradle shaped, and specifically designed for excellent care of the youngest pediatric patients. For enhancing efficient patient handling, the open, one piece design enables the operator to position and prepare the patient outside the examination room. Neuro examinations of brain and spine can be performed on one coil without having to move the patient.

dStream Ped NeuroSpine coil

Maximum number of channels	8
Main applications	Pediatric brain Pediatric spine
Coil solution type	Integrated
Data sampling	dStream digital broadband
Coil connection	dStream Interface
SENSE parallel imaging	dS SENSE enhanced parallel imaging performance
Other features	Includes: Comfort mattress Optional: Acoustic hood



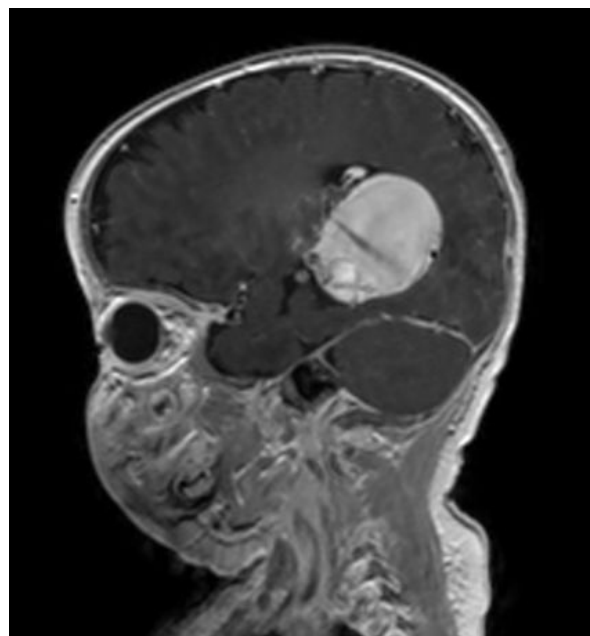
Sagittal T2w TSE (left) and T1w TSE (right)

T2w TSE: 0.4 x 0.7 x 2.0 mm, 5:58 min

T1w TSE: 0.6 x 0.8 x 2.0 mm, 4:22 min

Ingenia 1.5T

Courtesy: Cincinnati Children's Hospital, USA



Sagittal T1w 3D (post-gado)

1.0 x 1.0 x 1.0 mm

4:42 min

Ingenia 1.5T

Courtesy: Cincinnati Children's Hospital, USA



How to reach us

Please visit www.philips.com/healthcare
Please visit www.philips.com/Ingenia
healthcare@philips.com