

Installation Guide

Top Plate with Camlock Rails or Top Plate with Channel for Dräger Primus Anesthesia Machine

Top Plate with Camlock Rails



Top Plate with Channel



The purpose of this guide is to describe installation of the Top Plate on the machine.

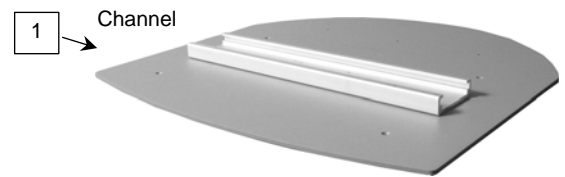
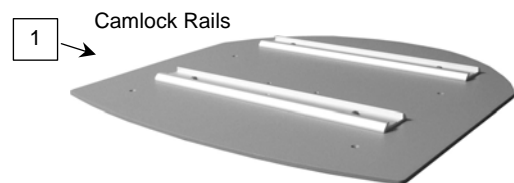
Warning: Do not mount equipment such that its center of gravity is outside the perimeter of the Top Plate.

Parts Reference

The following parts and hardware are included in this installation kit (hardware not shown).

Item #	Description	Qty
1	*Top Plate (with Camlock Rails or Channel)	1
2	M4 x 14 mm Flat Head Machine Screw	4
3	Spacer, 1/2" x .171" x 3/16" Nylon	4

**Both Top Plates are not included in this kit.*



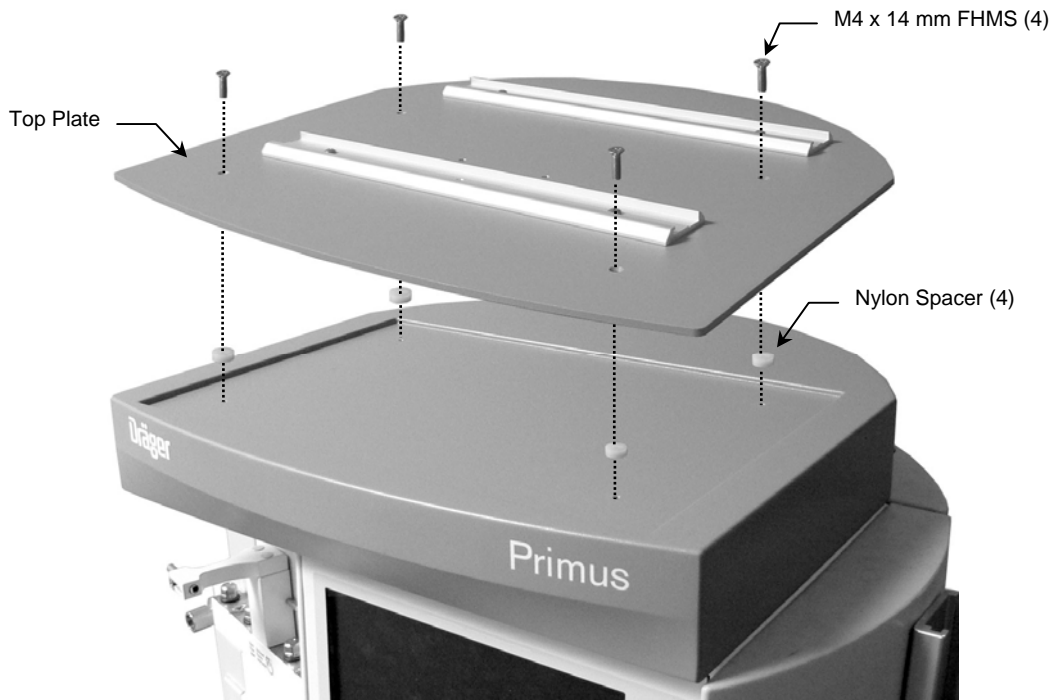
Tools required

- Phillips screwdriver (not provided).

Attaching the Top Plate to the Anesthesia Machine

Installation Note: The installation procedure below applies to Top Plate with Camlock Rails (shown) or Top Plate with Channel (not shown).

1. Fasten Top Plate to anesthesia machine with four (4) M4 x 14 mm FHMS and Nylon spacers as shown below. This procedure is more easily accomplished by first aligning spacers over mounting holes, then aligning Top Plate over spacers/mounting holes. **Caution:** Carefully tighten screws by hand only. Do not use power tools.



Routine Maintenance of the Mounting System

Periodically inspect all mounting hardware. Tighten fasteners or adjust as necessary for optimal operation.

Cleaning the Mounting System

CAUTION: GCX makes no claims regarding the efficacy of the listed chemicals or processes as a means for controlling infection. Consult your hospital's infection control officer or epidemiologist. To clean or sterilize mounted instruments or accessory equipment, refer to the specific instructions delivered with those products.

1. The mounting assembly may be cleaned with most mild, non-abrasive solutions commonly used in the hospital environment (e.g. diluted bleach, ammonia, or alcohol solutions).
2. The surface finish will be permanently damaged by strong chemicals or solvents such as acetone and trichloroethylene.
3. Do not use steel wool or other abrasive material to clean the mounting assembly.
4. Damage caused by the use of unapproved substances or processes will not be covered by warranty. We recommend testing of any cleaning solution on a small area of the mounting assembly that is not visible to verify compatibility.
5. Never submerge or allow liquids to enter the components of the mounting system. Wipe all cleaning agents off the mounting system immediately using a water-dampened cloth. Dry parts thoroughly after cleaning.