



**PHILIPS**

3D VIEW

MR Clinical application

## View your 3D TSE imaging **data in any plane**

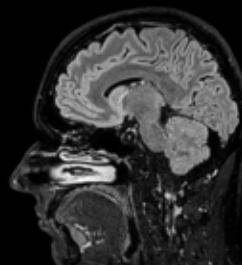
**3D VIEW** is an advanced 3D TSE technique that lets you acquire high resolution data in multiple directions, including oblique, in one scan helping you enhance your confidence when diagnosing lesions. Isotropic voxel size of 3D VIEW enables reformats in any plane without loss of resolution.

# 3D VIEW

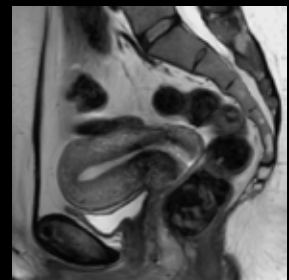
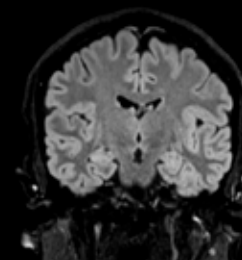
Field strength	1.5T, 3.0T.
Main applications	Applicable for multiple anatomies, such as brain, spine, MSK, pelvis and breast.
Sequence	3D TSE with isotropic voxel size enabling reformats in any plane without loss of resolution.
Image contrast	Available for a range of contrasts, including T1w, T2w and PDw.
Speed	Leverages the efficient dS SENSE parallel imaging technology to provide superior speed performance. Allows for up to 20% shorter scan times due to time-efficient, low SAR flip angle sweep technology.
Image quality	Optimal signal-to-noise due to dStream's digitization at the patient.



**3D VIEW – T2w TSE**  
Oblique reformats  
0.9 x 1.0 x 0.5 mm, 5:35 min  
Ingénia 1.5T



**3D VIEW – T2w FLAIR**  
Source + coronal reformat  
1.1 x 1.1 x 1.1 mm, 4:53 min  
Ingénia 1.5T



**3D VIEW – T2w TSE**  
Source + oblique reformat  
1.0 x 1.0 x 1.0 mm, 5:25 min  
Ingénia 1.5T

