

PHILIPS

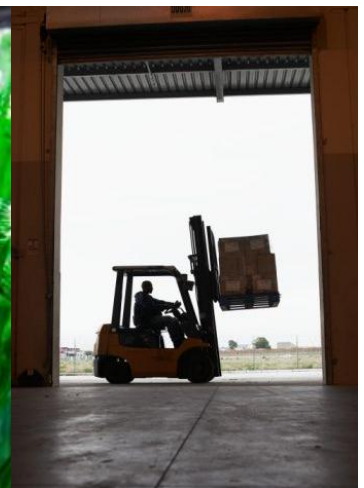
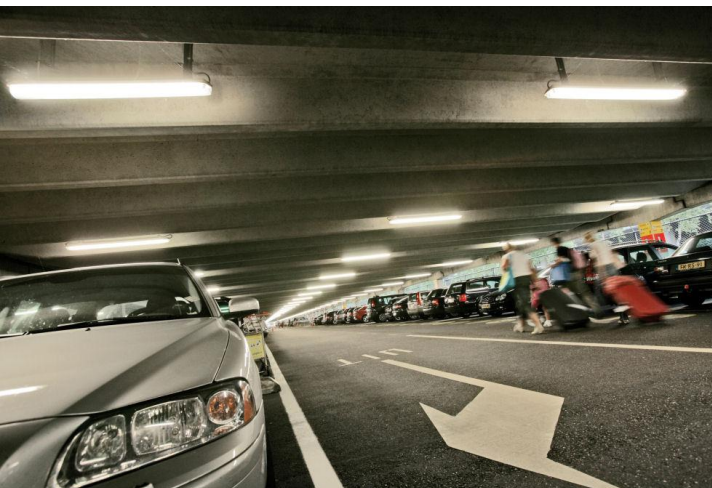
CoreLine Waterproof Application aspects

Marius Wouters
Professional Lighting Solutions - LiAS
August 22, 2012



CoreLine Waterproof

- **Great performance**
Universal concept
- **Easy installation**
Flexible bracket
- **Unique, modern design**
Protected in EU, China, USA, Japan

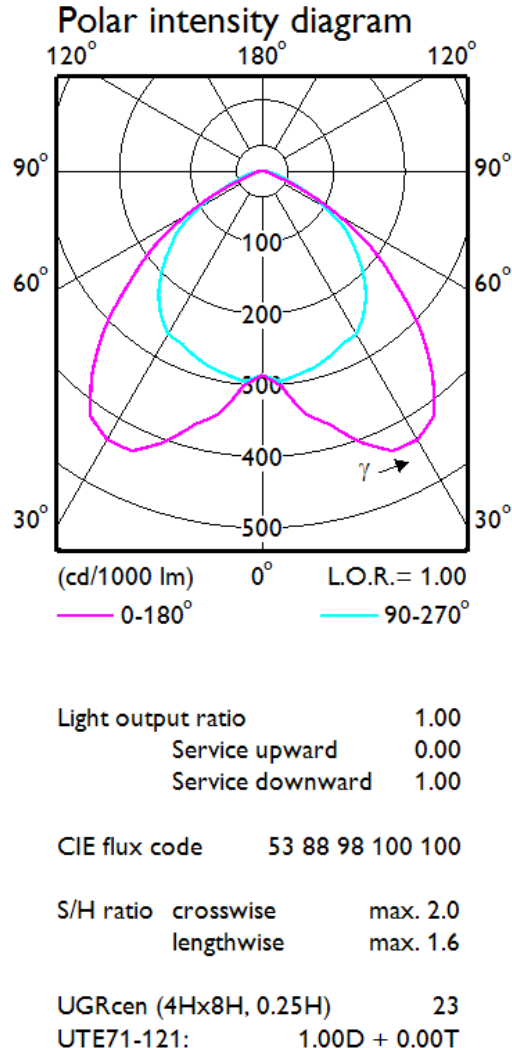


Typical applications – CoreLine Waterproof

- General lighting with protected luminaires h=6.0m
 - 200 lux solution
 - 300 lux solution
 - 500 lux solution
- Under canopy h=4.5m
 - 100 lux solution
- Small food industry h=4.0m
 - 300 lux solution
 - 500 lux solution
- Covered car parking h=2.5m
 - 100 lux solution
 - 200 lux solution



Optical performance – CoreLine Waterproof



Universal light distribution

- Wide beam, batwing distribution
- No up-light component: no light loss
- Wide spacing crosswise and lengthwise with good uniformity
- Limited glare (UGR 23, < 8 kcd/m² at 65 degrees)
- Suitable for low and high illuminance levels (e.g. parking 100 lux and food production 500 lux)
- Rule of thumb:
 - Parking: 1 luminaire per 2 parking spaces (100 lux)
 - Industry: 1 luminaire each 12 m² for 500 lux

Energy performance – Protected luminaires

| Luminaire | Lamp type | Lamp lumen | Luminaire lumen | Power (W) | Luminaire lumen/Watt |
|---------------|---------------------|-------------|-----------------|-----------|----------------------|
| TCW060 | 1.36 TL-D | 3350 | 2345 | 36 | 65 |
| TCW216 | 1.36 TL-D | 3350 | 2580 | 26 | 72 |
| BCW060 | 19W TLED | 1650 | 1452 | 19 | 77 |
| BCW216 | 19W TLED | 1650 | 1502 | 19 | 79 |
| TCW060 | 2.36 TL-D | 6700 | 4221 | 72 | 59 |
| TCW216 | 2.26 TL-D | 6700 | 4623 | 72 | 64 |
| BCW060 | 2x19W TLED | 3300 | 2772 | 38 | 73 |
| BCW216 | 2x19W TLED | 3300 | 3003 | 38 | 79 |
| WT120C | LED38S (4ft) | 3784 | 3784 | 40 | 94 |
| TCW060 | 1.58W TL-D | 5200 | 3276 | 55 | 60 |
| TCW216 | 1.58W TL-D | 5200 | 3900 | 55 | 71 |
| WT120C | LED33S (5ft) | 3293 | 3293 | 26 | 127 |
| TCW060 | 2.58 TL-D | 10400 | 6136 | 111 | 55 |
| TCW060 | 2.58 TL-D | 10400 | 6968 | 111 | 63 |
| WT120C | LED59S (5ft) | 5896 | 5896 | 49 | 120 |

Optical performance - 1

CoreLine Waterproof:
 Lowest energy consumption
 per square meter
 Low quantities required

Standard application : **Parking**

low ceiling (2.5m)

low illuminance 100 lux

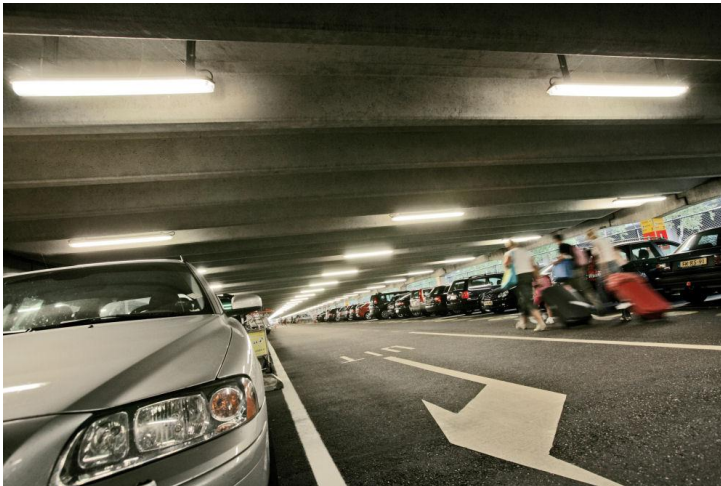
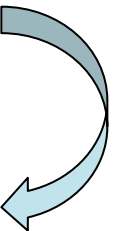
uniformity according EN-12464-1

Number of luminaires required and
 installed power

of lum W/m²
 /100 lux

1500 mm solutions

- TCW060 1.58 100% 2.8
- TCW216 1.58 80% 2.2
- BCW060 1.34 TLED 102% 2.0
- BCW216 1.34 TLED 96% 1.9
- **Coreline WP 33S** **81%** **1.0**
- Trilux Nextrem Opal 76% 2.2
- Disano Echo 126 74% 1.8



Optical performance – 2a

**Coreline Waterproof:
Lowest energy consumption
per square meter
1-to-1 replacement of 2.36W**

Standard application: **Industrial area**
normal ceiling (6.0 m)
illuminance 200 lux
uniformity according EN-12464-1

Number of luminaires required and
installed power

| | # of lum | W/m ² /100 lux |
|--|----------|------------------------------|
|--|----------|------------------------------|

1200 mm solutions

- | | | |
|------------------------------|------------|------------|
| • TCW060 2.36 | 100% | 3.4 |
| • TCW216 2.36 | 89% | 3,0 |
| • BCW060 2.19 TLED | 135% | 2,4 |
| • BCW216 2.19 TLED | 127% | 2,2 |
| • CoreLine WP 38S | 89% | 1,7 |
| • Trilux Nextrem Opal (1.1m) | 72% | 1,9 |
| • Disano Echo 126 (1.5m) | 97% | 2,2 |
| • Disano Echo 168 (1.5m) | 73% | 2,2 |



Optical performance – 2b

**CoreLine Waterproof:
Lowest energy consumption
per square meter
1-to-1 replacement of 2.58W**

Standard application: **Industrial area**
normal ceiling (6.0 m)
illuminance 200 lux
uniformity according EN-12464-1

Number of luminaires required and
installed power

| | # of lum | W/m ² /100 lux |
|--|----------|------------------------------|
|--|----------|------------------------------|

1500 mm solutions

- | | | |
|--------------------------|------------|------------|
| • TCW060 2.58 | 70% | 3,6 |
| • TCW216 2.58 | 61% | 3,2 |
| • BCW060 1.34 TLED | 154% | 2,4 |
| • BCW216 1.34 TLED | 146% | 2,3 |
| • CoreLine WP 59S | 57% | 1,5 |
| • Trilux Nextrem Opal | 72% | 1,9 |
| • Disano Echo 126 | 97% | 2,2 |
| • Disano Echo 168 | 73% | 2,2 |



