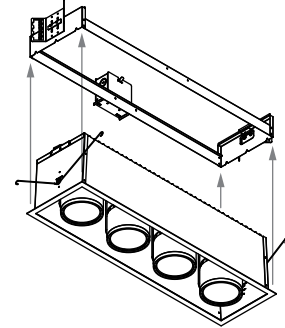


Taking LED accent lighting to the next level.

LLAVRM ALCYON LED VERTICAL CYLINDER 10W/18W/32W RECESSED LIGHTING



PHILIPS LIGHTOLIER, RECESSED LIGHTING,
ALCYON LED VERTICAL, 10W/600LM 18W/1000LM
32W/2000LM MULTI-HEAD CYLINDER, LLAVRM

Complete unit
Frame-in kit + Fixture + Reflector + optional accessories

Project: _____
Location: _____
Catalog No: _____
Fixture Type: _____
Mfg: _____ Lamps: _____ Qty: _____
Notes: _____

Frame-in kit

example: LLAVRM11H2120

Series	Lumens	Heads	Voltage
LLAVRM	<input type="text"/>	<input type="text"/>	<input type="text"/>
LLAVRM Alcyon LED recessed cylinder	11 600 /1000lm 12 2000lm	H1 1 head H2 2 head H3 3 head H4 4 head	120 120V 277 277V

Fixture

example: LLAVRMWH1130H2

Series	Finish	Lumens	CCT	Heads
LLAVRM	<input type="text"/>	<input type="text"/>	<input type="text"/>	<input type="text"/>
LLAVRM Alcyon LED recessed cylinder	WH White BK Black	01 600lm 11 1000lm 12 2000lm	27 2700K 30 3000K 40 4000K	H1 1 head H2 2 head H3 3 head H4 4 head

Reflector

example: LLAV12RNS

Series	Lumens	Reflector
LLAV	<input type="text"/>	<input type="text"/>
LLAV Alcyon LED reflector	11 600 /1000lm 12 2000lm	RNS Narrow Spot RS Spot RNF Narrow flood RF Flood

Accessories

example: LLA11SNBK

Series	Finish
<input type="text"/>	<input type="text"/>
Accessory holder	
LLAV11AH Alcyon LED 600/1000lm	WH Matte White
LLAV12AH Alcyon LED 2000lm	BK Matte Black
Snoot	
LLA11SN Alcyon LED 600/1000lm	WH Matte White
23SNT6 Alcyon LED 2000lm	BK Matte Black
Diffusion filters	
LLAV11 Alcyon LED 600/1000lm	LS Linear Spread
LLAV12 Alcyon LED 2000lm	SY Symmetrical Spread
	SF Soft Focus
	FR Frosted Etched

Color filters/gels

Color gels provided by others for Alcyon LED 600/1000lm

ADF4 Alcyon LED 2000lm
or Color gels provided by others

Hex cell louver

LLAHCA11 Alcyon LED 600/1000lm
AL4HC Alcyon LED 2000lm



PHILIPS
LIGHTOLIER

LLAVRM

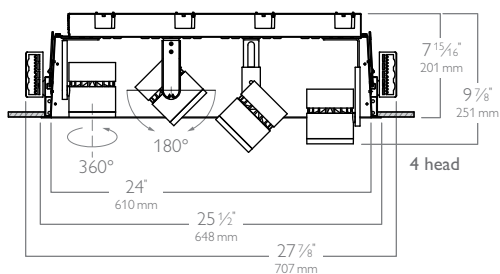
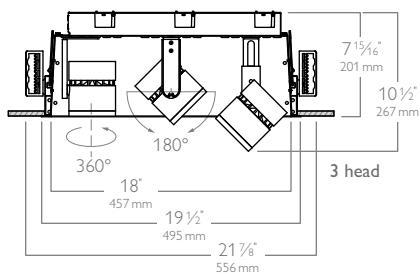
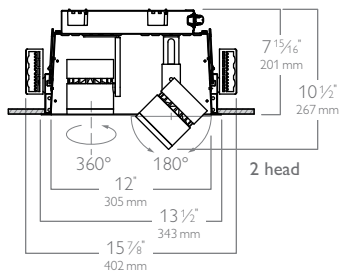
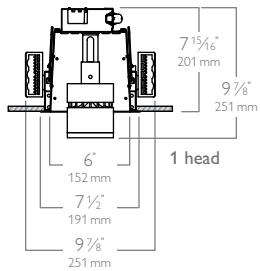
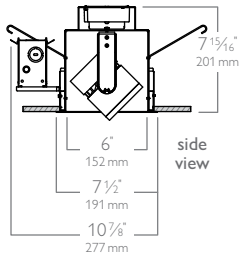
ALCYON LED

VERTICAL CYLINDER

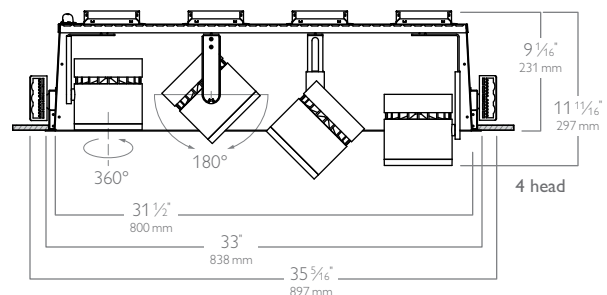
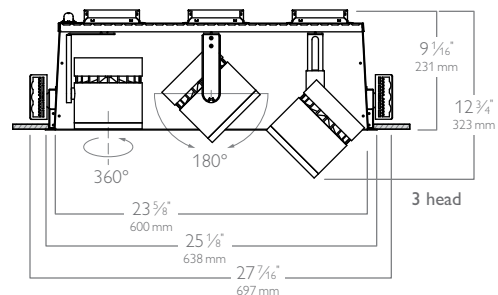
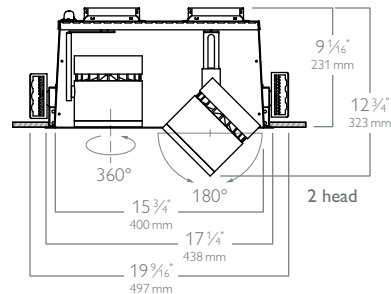
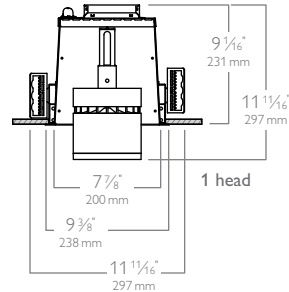
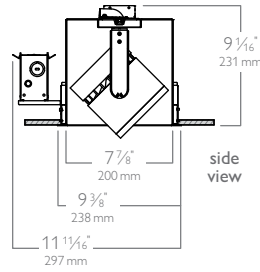
10W/18W/32W

RECESSED LIGHTING

600/1000lm



2000lm



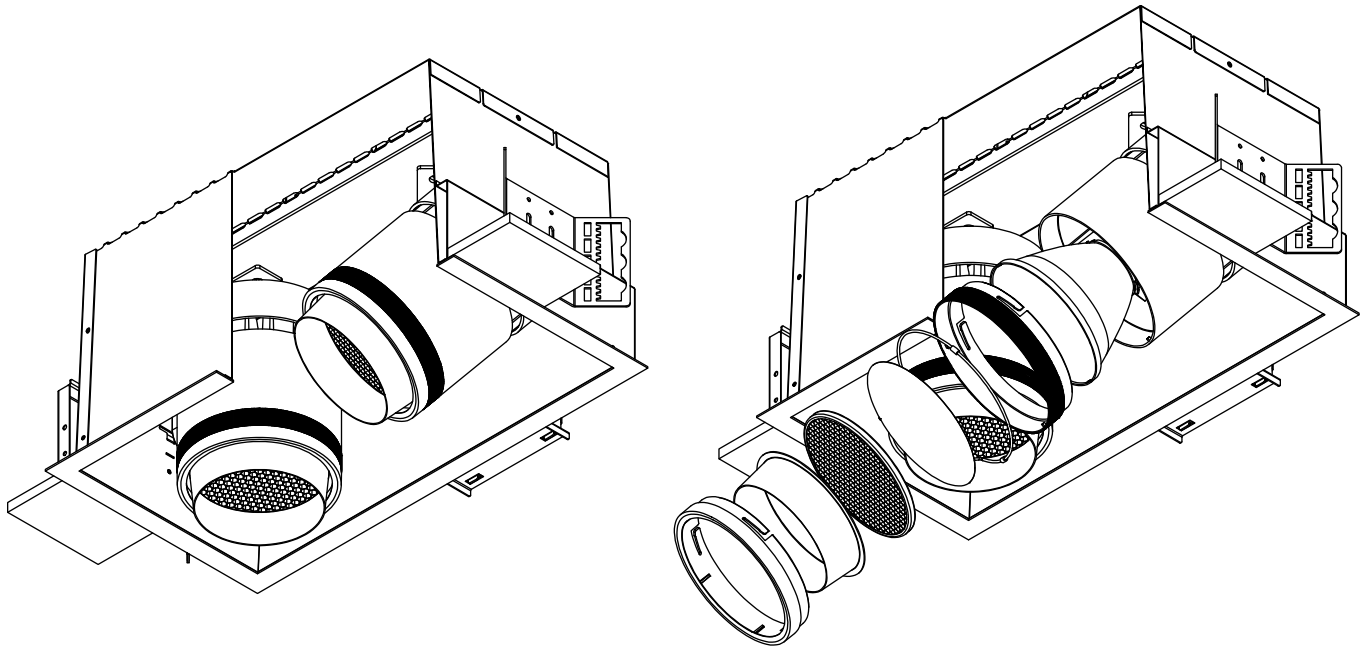
LLAVRM

ALCYON LED

VERTICAL CYLINDER

10W/18W/32W

RECESSED LIGHTING



Features

1. **LED Board:** COB LED (600/1000LM); 9 Tightly packed high brightness LED's (2000LM).
2. **Heat Sink:** Die-cast aluminum maintains LED junction temperature for minimum 50,000hr lifetime at 70% lumen maintenance.
3. **Finishes:** Painted finishes with a baked enamel. Contains some powder coated finishes.
4. **Heat Sink Arm:** Tool-less aiming with 360° horizontal rotation, 180° vertical tilt and a pull down adjustment from flush recessed to semi-recessed for optimal performance.
5. **Trim/Housing:** One part integrated system including a seamless flange (16 ga powder coated steel), and pre-formed housing (22 ga powder coated steel), with prewired integral driver(s).
6. **Frame with mounting brackets:** Mounting brackets are adjustable vertically from inside of Frame-in-kit. Maximum ceiling thickness is 1 5/8". Accepts various types of mounting bars including C-channel, EMT (contractor supplied) and Lightolier mounting bars (Cat. # 1950 or 1951). For use in T-grid or sheet rock ceiling. See page 2 for overall dimensions.
7. **Junction box:** 4" x 3 1/2" x 2" ; .063" (14 ga.) galvanized steel.
8. **Thermal Protector:** Meets NEC and UL requirements. Insulation must be kept 3" away from fixture sides and wiring compartments and must not be placed above fixture in a manner which will entrap heat.
9. **Luminaire Disconnect:** Power from Frame-in-kit to Trim/Housing connection with quick connect plug.
10. **Torsion Springs and Safety Springs:** Torsion Springs swivel to allow Trim/Housing to hang temporarily from one end to ease the process of making luminaire electrical connection complete. Safety Springs allow positive lock between Trim/Housing and Frame-in-kit for added security.
11. **Interchangeable Optics:** High efficiency metalized coating providing up to 98% total reflectivity for optimal light quality, beam control and punch. Reflector has lens attached which protects reflector finish and LEDs from contamination. Tool-less installation. Reflector sold separately to allow field replacement. Various combinations of beam angles could be achieved with 4 optic offerings.

Dimming

Not available.

Electrical

Electronic power supply

Input voltage: 120/277V, 50/60Hz

Input power:

600lm ~ 10W/11W (estimated)

1000lm ~ 18W/19W (estimated)

2000lm ~ 32W/32W (estimated)

High power factor: >0.9

CRI: 80-85 (typical)

Labels

cULus Listed.

Suitable for damp location (pending)

Energy Star certified (pending).

Title 24 (pending).

Accessories are not Energy Star qualified.

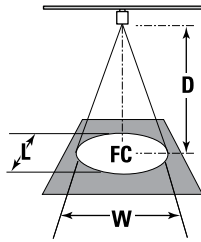
5 year warranty.

LLAVRM ALCYON LED VERTICAL CYLINDER 10W/18W/32W RECESSED LIGHTING

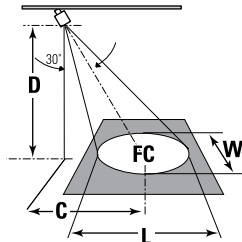
Aiming angle

L and **W** are the outer points where the candle power drops to 50% of the maximum. **FC** are the initial footcandles at the center of the beam. Data shown is for 3000K, for 2700K multiply **FC** by 0.91.

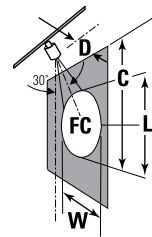
- L = Beam length
- W = Beam width
- D = Distance
- A = Aiming angle
- FC = Footcandles
- C = Distance to center beam
- CBCP = Center Beam Candle Power



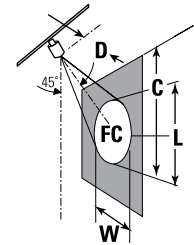
0° horizontal aiming angle



30° horizontal aiming angle



30° vertical aiming angle



45° vertical aiming angle

	Beam spread (To 50% CBCP)	CBCP	Rated Life (Hrs.)	0° horizontal aiming angle					30° horizontal aiming angle					30° vertical aiming angle					45° vertical aiming angle				
				D	C	FC	L	W	D	C	FC	L	W	D	C	FC	L	W	D	C	FC	L	W
LLAVRM01RNS Narrow Spot	11°	12,284	50,000	8'	0.0'	192	1.5'	1.5'	8'	4.6'	125	2.1'	1.8'	4'	6.9'	96	3.2'	1.5'	5'	5.0'	174	1.9'	1.4'
				10'	0.0'	123	1.9'	1.9'	10'	5.8'	80	2.6'	2.2'	5'	8.7'	61	4.0'	1.9'	6'	6.0'	121	2.3'	1.6'
				12'	0.0'	85	2.3'	2.3'	12'	6.9'	55	3.1'	2.7'	6'	10.4'	43	4.8'	2.3'	7'	7.0'	89	2.7'	1.9'
				14'	0.0'	63	2.7'	2.7'	14'	8.1'	41	3.6'	3.1'	7'	12.1'	31	5.5'	2.7'	8'	8.0'	68	3.1'	2.2'
LLAVRM01RS Spot	18°	5,098	50,000	6'	0.0'	142	1.9'	1.9'	6'	3.5'	92	2.6'	2.2'	2'	3.5'	159	2.7'	1.3'	3'	3.0'	200	1.9'	1.3'
				8'	0.0'	80	2.5'	2.5'	8'	4.6'	52	3.4'	2.9'	3'	5.2'	71	4.1'	1.9'	4'	4.0'	113	2.6'	1.8'
				10'	0.0'	51	3.2'	3.2'	10'	5.8'	33	4.3'	3.7'	4'	6.9'	40	5.5'	2.5'	5'	5.0'	72	3.2'	2.2'
				12'	0.0'	35	3.8'	3.8'	12'	6.9'	23	5.1'	4.4'	5'	8.7'	25	6.9'	3.2'	6'	6.0'	50	3.9'	2.7'
LLAVRM01RNF Narrow Flood	24°	3,292	50,000	6'	0.0'	91	2.6'	2.6'	6'	3.5'	59	3.5'	2.9'	2'	3.5'	103	3.9'	1.7'	3'	3.0'	129	2.7'	1.8'
				8'	0.0'	51	3.4'	3.4'	8'	4.6'	33	4.6'	3.9'	3'	5.2'	46	5.9'	2.6'	4'	4.0'	73	3.6'	2.4'
				10'	0.0'	33	4.3'	4.3'	10'	5.8'	21	5.8'	4.9'	4'	6.9'	26	7.9'	3.4'	5'	5.0'	47	4.5'	3.0'
				12'	0.0'	23	5.1'	5.1'	12'	6.9'	15	6.9'	5.9'	5'	8.7'	16	9.8'	4.3'	6'	6.0'	32	5.3'	3.6'
LLAVRM01RF Flood	35°	1,961	50,000	5'	0.0'	78	3.2'	3.2'	5'	2.9'	51	4.8'	3.6'	2'	3.5'	61	7.2'	2.5'	3'	3.0'	77	4.2'	2.7'
				6'	0.0'	54	3.8'	3.8'	6'	3.5'	35	5.2'	4.4'	3'	5.2'	27	10.8'	3.8'	4'	4.0'	43	5.6'	3.6'
				7'	0.0'	40	4.4'	4.4'	7'	4.0'	26	6.1'	5.1'	4'	6.9'	15	14.4'	5.0'	5'	5.0'	28	7.0'	4.5'
				8'	0.0'	31	5.0'	5.0'	8'	4.6'	20	7.0'	5.8'	5'	8.7'	10	18.0'	6.3'	6'	6.0'	19	8.4'	5.4'
LLAVRM11RNS Narrow Spot	10°	21,751	50,000	12'	0.0'	151	2.1'	2.1'	12'	6.9'	98	2.8'	2.4'	5'	8.7'	109	3.6'	1.7'	6'	6.0'	214	2.1'	1.5'
				14'	0.0'	111	2.4'	2.4'	14'	8.1'	72	3.3'	2.8'	6'	10.4'	76	4.3'	2.1'	7'	7.0'	157	2.5'	1.7'
				16'	0.0'	85	2.8'	2.8'	16'	9.2'	55	3.7'	3.2'	7'	12.1'	55	5.0'	2.4'	8'	8.0'	120	2.8'	2.0'
				18'	0.0'	67	3.1'	3.1'	18'	10.4'	44	4.2'	3.6'	8'	13.9'	42	5.7'	2.8'	9'	9.0'	95	3.2'	2.2'
LLAVRM11RS Spot	18°	8,276	50,000	6'	0.0'	230	1.9'	1.9'	6'	3.5'	149	2.6'	2.2'	2'	3.5'	259	2.7'	1.3'	3'	3.0'	325	1.9'	1.3'
				8'	0.0'	129	2.5'	2.5'	8'	4.6'	84	3.4'	2.9'	3'	5.2'	115	4.1'	1.9'	4'	4.0'	183	2.6'	1.8'
				10'	0.0'	83	3.2'	3.2'	10'	5.8'	54	4.3'	3.7'	4'	6.9'	65	5.5'	2.5'	5'	5.0'	117	3.2'	2.2'
				12'	0.0'	57	3.8'	3.8'	12'	6.9'	37	5.1'	4.4'	5'	8.7'	41	6.9'	3.2'	6'	6.0'	81	3.9'	2.7'
LLAVRM11RNF Narrow Flood	24°	5,051	50,000	6'	0.0'	140	2.6'	2.6'	6'	3.5'	91	3.5'	2.9'	2'	3.5'	158	3.9'	1.7'	3'	3.0'	198	2.7'	1.8'
				8'	0.0'	79	3.4'	3.4'	8'	4.6'	51	4.6'	3.9'	3'	5.2'	70	5.9'	2.6'	4'	4.0'	112	3.6'	2.4'
				10'	0.0'	51	4.3'	4.3'	10'	5.8'	33	5.8'	4.9'	4'	6.9'	39	7.9'	3.4'	5'	5.0'	71	4.5'	3.0'
				12'	0.0'	35	5.1'	5.1'	12'	6.9'	23	6.9'	5.9'	5'	8.7'	25	9.8'	4.3'	6'	6.0'	50	5.3'	3.6'
LLAVRM11RF Flood	35°	3,006	50,000	5'	0.0'	120	3.2'	3.2'	5'	2.9'	78	4.3'	3.6'	2'	3.5'	94	7.2'	2.5'	3'	3.0'	118	4.2'	2.7'
				6'	0.0'	84	3.8'	3.8'	6'	3.5'	54	5.2'	4.4'	3'	5.2'	42	10.8'	3.8'	4'	4.0'	66	5.6'	3.6'
				7'	0.0'	61	4.4'	4.4'	7'	4.0'	40	6.1'	5.1'	4'	6.9'	23	14.4'	5.0'	5'	5.0'	43	7.0'	4.5'
				8'	0.0'	47	5.0'	5.0'	8'	4.6'	31	7.0'	5.8'	5'	8.7'	15	18.0'	6.3'	6'	6.0'	30	8.4'	5.4'

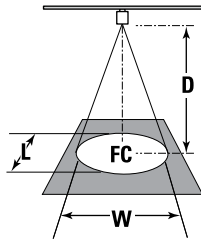
All testing based on single head configurations.

LLAVRM ALCYON LED VERTICAL CYLINDER 10W/18W/32W RECESSED LIGHTING

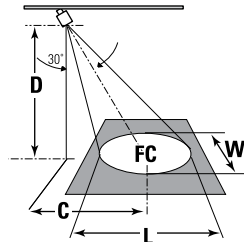
Aiming angle

L and **W** are the outer points where the candle power drops to 50% of the maximum. **FC** are the initial footcandles at the center of the beam. Data shown is for 3000K, for 2700K multiply **FC** by 0.91.

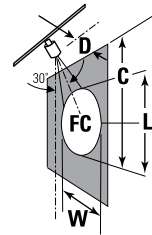
L = Beam length
W = Beam width
D = Distance
A = Aiming angle
FC = Footcandles
C = Distance to center beam
CBCP = Center Beam Candle Power



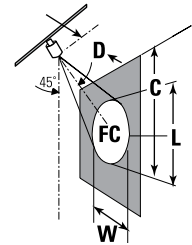
0° horizontal aiming angle



30° horizontal aiming angle



30° vertical aiming angle



45° vertical aiming angle

	Beam spread (To 50% CBCP)	CBCP	Rated Life (Hrs.)	0° horizontal aiming angle					30° horizontal aiming angle					30° vertical aiming angle					45° vertical aiming angle				
				D	C	FC	L	W	D	C	FC	L	W	D	C	FC	L	W	D	C	FC	L	W
LLAVRM12RNS Narrow Spot	11°	35,731	50,000	16'	0.0'	140	3.1'	3.1'	16'	9.2'	91	4.1'	3.6'	7'	12.1'	91	5.5'	2.7'	7'	7.0'	258	2.7'	1.9'
				18'	0.0'	110	3.5'	3.5'	18'	10.4'	72	4.6'	4.0'	8'	13.9'	70	6.3'	3.1'	8'	8.0'	197	3.1'	2.2'
				20'	0.0'	89	3.9'	3.9'	20'	11.5'	58	5.2'	4.4'	9'	15.6'	55	7.1'	3.5'	9'	9.0'	156	3.5'	2.5'
				22'	0.0'	74	4.2'	4.2'	22'	12.7'	48	5.7'	4.9'	10'	17.3'	45	7.9'	3.9'	10'	10.0'	126	3.9'	2.7'
LLAVRM12RS Spot	17°	16,545	50,000	10'	0.0'	165	3.0'	3.0'	10'	5.8'	107	4.0'	3.5'	4'	6.9'	129	5.1'	2.4'	5'	5.0'	234	3.1'	2.1'
				12'	0.0'	115	3.6'	3.6'	12'	6.9'	75	4.8'	4.1'	5'	8.7'	83	6.4'	3.0'	6'	6.0'	162	3.7'	2.5'
				14'	0.0'	84	4.2'	4.2'	14'	8.1'	55	5.6'	4.8'	6'	10.4'	57	7.7'	3.6'	7'	7.0'	119	4.3'	3.0'
				16'	0.0'	65	4.8'	4.8'	16'	9.2'	42	6.4'	5.5'	7'	12.1'	42	9.0'	4.2'	8'	8.0'	91	4.9'	3.4'
LLAVRM12RNF Narrow Flood	24°	9,947	50,000	8'	0.0'	155	3.4'	3.4'	8'	4.6'	101	4.6'	3.9'	3'	5.2'	138	5.9'	2.6'	4'	4.0'	220	3.6'	2.4'
				10'	0.0'	99	4.3'	4.3'	10'	5.8'	65	5.8'	4.9'	4'	6.9'	78	7.9'	3.4'	5'	5.0'	141	4.5'	3.0'
				12'	0.0'	69	5.1'	5.1'	12'	6.9'	45	6.9'	5.9'	5'	8.7'	50	9.8'	4.3'	6'	6.0'	98	5.3'	3.6'
				14'	0.0'	51	6.0'	6.0'	14'	8.1'	33	8.1'	6.9'	6'	10.4'	35	11.8'	5.1'	7'	7.0'	72	6.2'	4.2'
LLAVRM12RF Flood	35°	5,581	50,000	6'	0.0'	155	3.8'	3.8'	6'	3.5'	101	5.2'	4.4'	2'	3.5'	174	7.2'	2.5'	3'	3.0'	219	4.2'	2.7'
				8'	0.0'	87	5.0'	5.0'	8'	4.6'	57	7.0'	5.8'	3'	5.2'	78	10.8'	3.8'	4'	4.0'	123	5.6'	3.6'
				10'	0.0'	56	6.3'	6.3'	10'	5.8'	36	8.7'	7.3'	4'	6.9'	44	14.4'	5.0'	5'	5.0'	79	7.0'	4.5'
				12'	0.0'	39	7.6'	7.6'	12'	6.9'	25	10.4'	8.7'	5'	8.7'	28	18.0'	6.3'	6'	6.0'	55	8.4'	5.4'

All testing based on single head configurations.



© 2014 Koninklijke Philips N.V. All rights reserved.
Specifications are subject to change without notice.
www.philips.com/luminaires

LLAVRM 02/14 page 5 of 5

Philips Lighting
North America Corporation
200 Franklin Square Drive
Somerset, NJ 08873
Phone: 855-486-2216

Philips Lighting Company
281 Hillmount Road
Markham ON, Canada L6C 2S3
Phone: 800-668-9008