

Twan Peeters, Helden, Netherlands (3.00x1.00x80)

April 2017

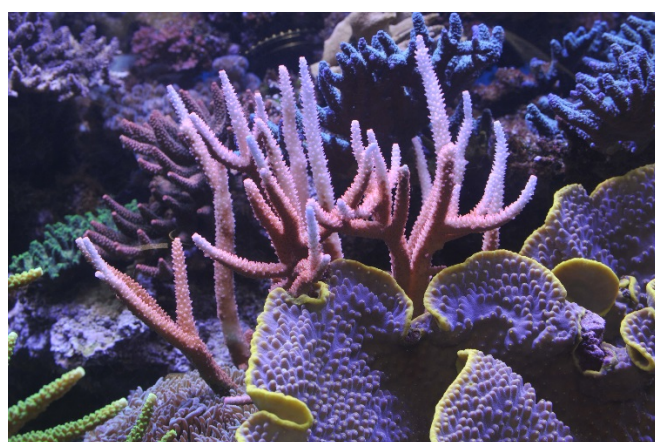
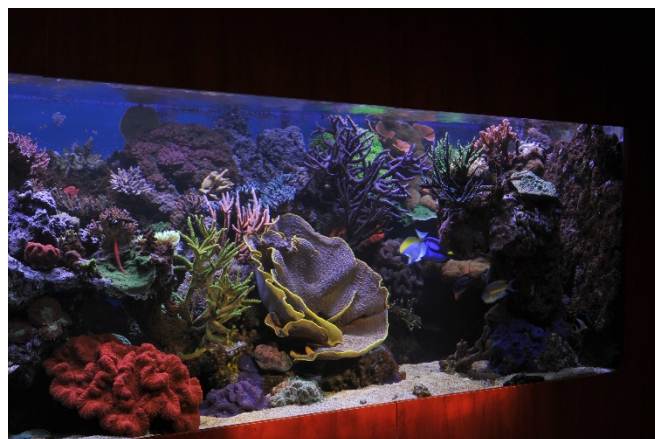
We are lighting the aquarium with CoralCare for some time now. At the beginning we had 4 CoralCare luminaires above the aquarium and 4 of a different brand. However, because of the good results, all lights have now been replaced by CoralCare, 6 in total and I'm very satisfied. Each time we are surprised that a surface of 3 x 1 meter can be lit that well with these 6 lights. But it is working very well.

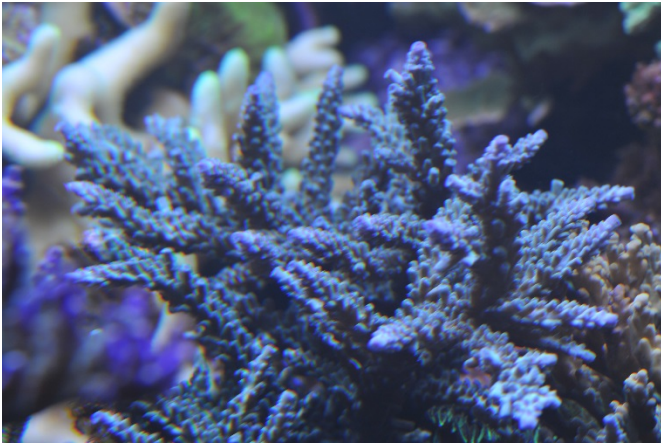
At the beginning we had a light setting of 80%. However, the colors of the corals became quite light. Too much light? Anyway, we switched to a less intensive light setting. We went from 80% light to 50% during the day. From 18.00h until 23.00h the lights went to 80% again. This helped, the colors slowly became darker. At this point I have increased the light output again and now we are at an average of 75%. This is a good setting for our aquarium.

I'm very satisfied with the color rendering. Also the corals seem to appreciate this light and that shows in the growth of the corals. Also the colors start to further develop.

The programming of the lights is easy, Philips has thought this through very well. The only disadvantage is (if a disadvantage at all) that you need to bring the computer to the lights to program. But how often do you need to do this anyway. I think that once the program is OK, you are not likely to change it again.

In any case: we are very satisfied.





18 May 2016

I am definitely very pleased with the results of the lamp.

The growth and colorization of the corals have improved, before I had the CoralCare from Philips I already had LED from China with only blue and white LEDs.

It is particularly the good (light) distribution of your lamp that is a big plus point; no point lighting, which is what I had with the Chinese lamp.

And no additional cooling either, which is also a plus point, no hum or buzz from the fans any more.

Very easy to set via the PC, the disadvantage is that to do this you have to make a connection via USB.

This is not a problem for me, but I think in the future there will be demand to be able to set this via an app. or something similar.

I am definitely very impressed with this lamp.

Test results after 5 months of testing.

13 February 2016

“After five months of testing I am still very pleased with the performance of the lamp.

I continue to be amazed by the distribution of the light in my aquarium.

At first I was concerned that this lamp might not cope with the depth (1 meter from the glass at the front to the glass at the back of the tank!).

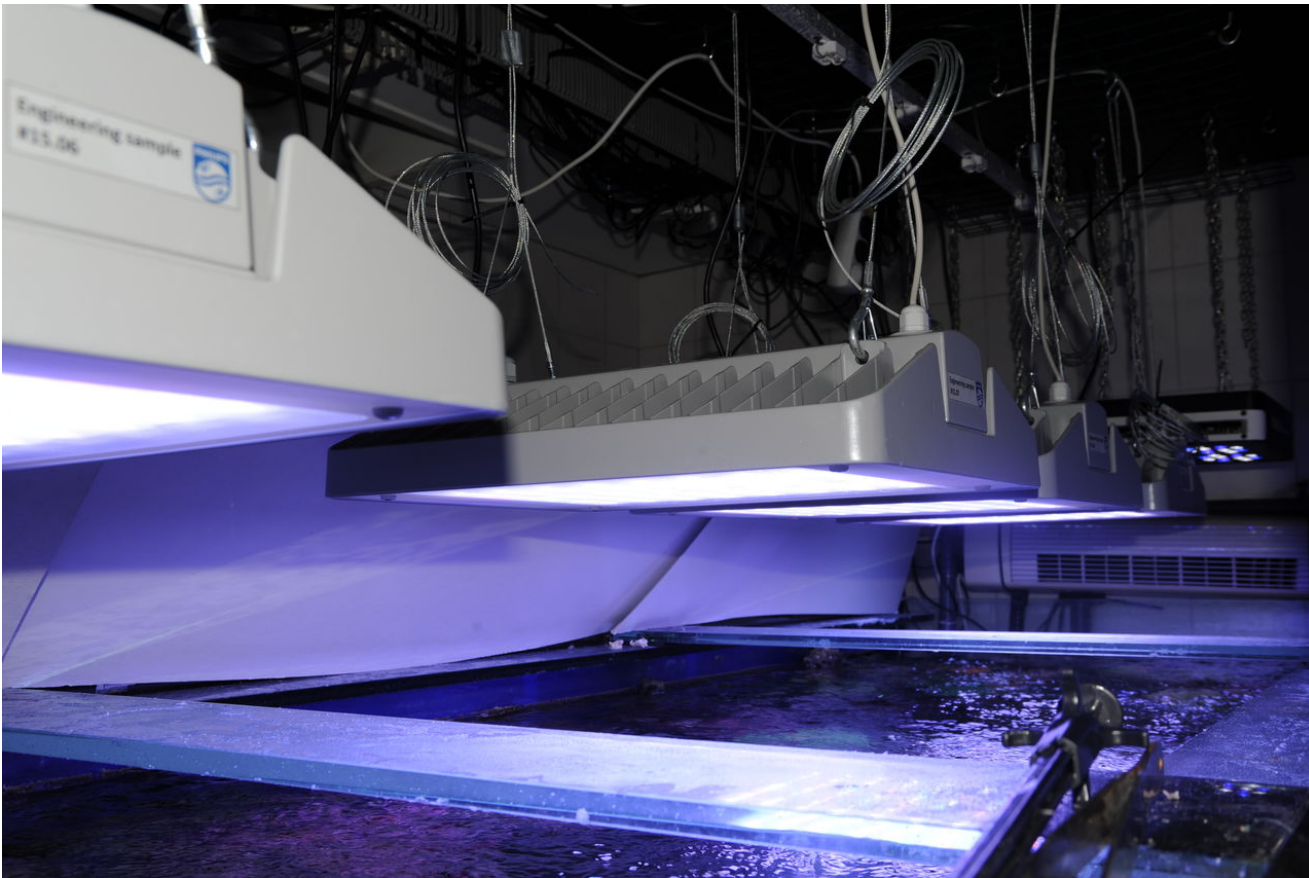
However, so far I have not experienced any problems relating to this.

Coral that is high up against the back of the tank and the corals that are deep down at the front are doing very well.

I can also see the coloration is continuing to improve.”

The lamps are currently set at 85%.





September 1, 2015

“First impression is that this is a good, solid lamp.

It was very easy to install.

However, one improvement would be to make the 4 suspension loops that fit on the lamp fixture itself a bit bigger, so that they fit on more easily. Philips: Feedback has been noted and the problem has been solved in the production process.

The slider system makes it very easy to adjust the lamp to the correct height.

The lamps are currently set at 75%. When I first installed the lighting, the top of some of the corals got burnt. The lamps produce a huge amount of light and the corals need some time to adjust to this.

The color and growth of the other corals in the aquarium is improving.

I can also see that the corals on the floor of the tank are growing better and their color is developing nicely.

The corals will adjust to the new light and that is going to take time.

Because of this, it is difficult to give an exact opinion on this now.

At any rate, the changes I have seen so far have definitely been favorable.

Our aquarium is 3 meters wide, 1 meter deep and the water level is at 75 cm.

Something that surprises me – and it’s a very good thing – is that the lamps can illuminate a 1-m deep tank with no problem at all.

At this point in time I can say I am very pleased with the results so far.”



Coral growth comparison:

18-9-2015

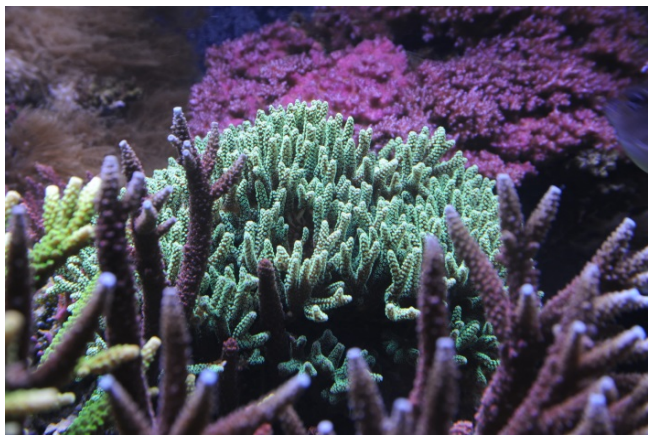
23-12-2015



18-9-2015



23-12-2015



18-9-2015



23-12-2015

