

PHILIPS

Industry lighting

GreenParking

Kungsporsavenyen,
Gothenburg



BELLORA

Our stories

Sustainable and
scalable savings



Bright and secure lighting, lower energy bills

When Bygg-Göta Göteborg AB renovated its parking garage at Kungsporsavenyen, the company wanted an energy-efficient, sustainable lighting system that complied with its environmental policy.

Simple, sustainable solution

Bygg-Göta Göteborg builds and manages properties. The company's operations are underpinned by its environmental policy, which aims to continually improve the energy efficiency of its properties.

When the company wanted to renovate its Kungsporsavenyen parking garage, an easy-to-install, sustainable lighting solution was a priority.

"The existing fluorescent lamp solution was at the end of its life," explains Nemanja Brankovic, Project Manager at Bygg-Göta Göteborg. "Also, the lighting didn't have any controls, so the car park was lit around the clock, which wasted energy and incurred unnecessary costs.

"We've completely renovated the garage. A major part of the renovation was the new lighting system, which involved replacing the conventional fluorescent fittings with energy-saving LEDs."

Wireless movement detection

Bygg-Göta Göteborg's aim was to install a smart, energy-efficient system that reduces energy consumption, cuts costs and is good for the environment.

"Initially, we wanted to replace the fluorescent lamps with LED fixtures without lighting controls," continues Brankovic. "Then we discovered Philips GreenParking with wireless movement detection. The solution makes sure lighting is only activated when it's needed, which minimizes energy consumption.

"Plus the lighting controls increase the life span of the luminaires, which again saves costs."

GreenParking: the complete lighting system

The existing fluorescent light fittings – 2x 36W T8 luminaires – were replaced with energy-efficient GreenParking system.

GreenParking is a comprehensive lighting system: comprising of Pacific LED luminaires and wireless movement sensors which allow the system to be easily set up and controlled.

Installing the GreenParking system is quick and easy, and can be installed using the existing cabling for the luminaires, minimizing installation costs. The sensors are wireless, meaning no additional cables are required there either. Once installed, the system is configured and controlled wirelessly via remote control. To further ensure light quality and safety, the Pacific LED luminaires are IP65 protection class rated – more than tough enough to withstand garage environments.

Big energy savings

The movement detection sensors mean Bygg-Göta Göteborg is only paying for lighting when it's needed. "When a car enters the garage, lighting increases to 90% of its full output," says Brankovic. "And when it leaves, lighting dims to 10% after two minutes.

“We anticipate energy savings of 80%, which will greatly reduce the total cost of ownership. In fact, we predict the system will pay for itself within 4 years.”

Nemanja Brankovic
Project Manager Bygg-Göta Göteborg AB



'Zoning' the garage

"GreenParking is simple to install," adds Brankovic. "And it's very easy to change the control settings via the remote control, due to the wireless nature of the system – we can adapt and operate the system according to our specific needs."

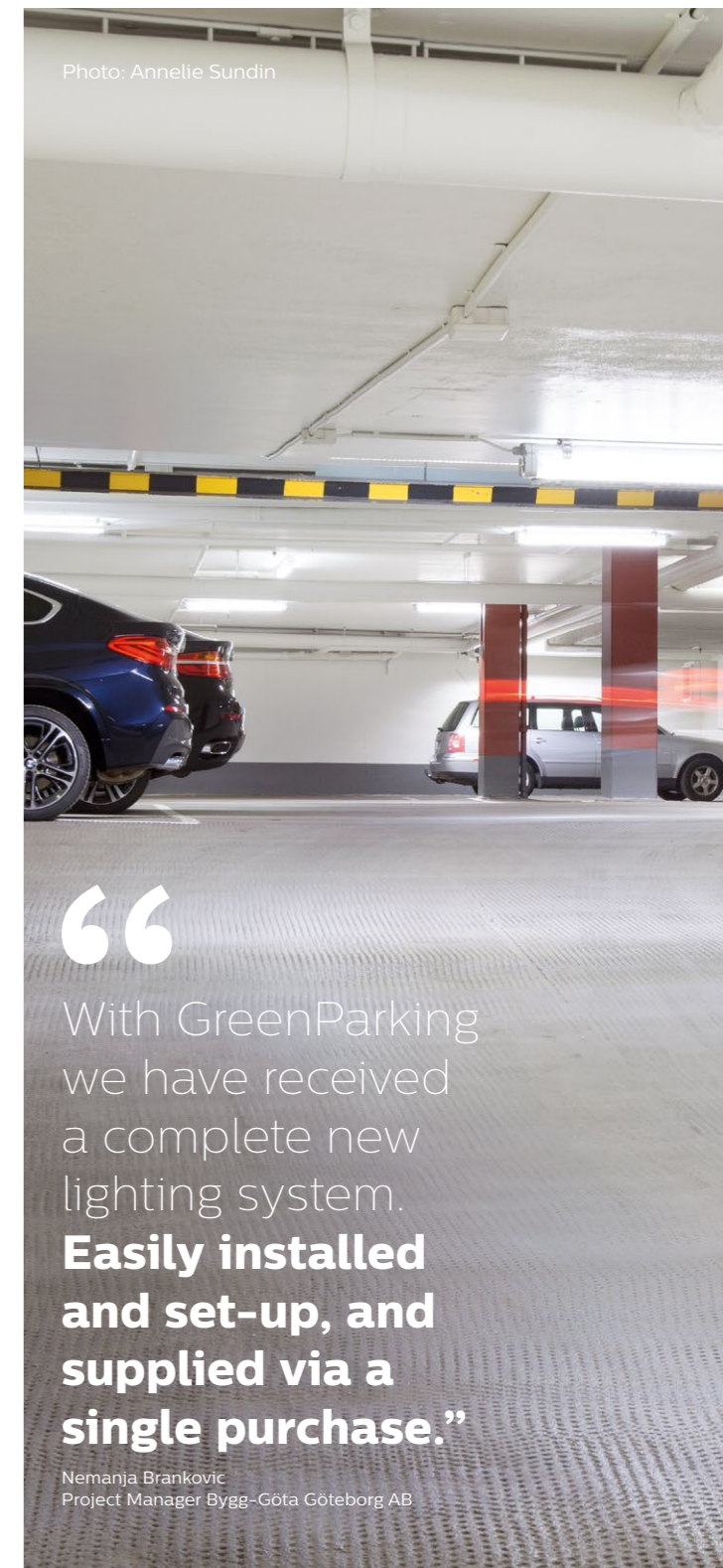
Bygg-Göta Göteborg has mounted 14 wireless movement detection sensors on each of the 5 floors of the parking garage. "We've divided the garage into one zone per floor. The number of movement detection sensors per floor depends on the construction of that floor – for example, the location of the doors. On the ground floor, we installed 1 sensor, 2 on the second floor, 4 on the third, 2 on the fourth, and 3 on the fifth. The LED lighting produces a crisp white light, making the garage feel very safe and secure, which is very important to our customers."

By zoning the parking garage, only zones that are occupied by either vehicles or pedestrians need be lit to 90% output – the movement sensors pick up this activity and increase the light levels. When no movement is detected in a zone after 2 minutes, the lighting dims down to a background level of 10% light output to save energy. The lighting is then only switched on fully, where and when it is needed.

General lighting with LED,
wireless movement detection

GreenParking system

Manager: Martin Augustsson
Philips Lighting
martin.augustsson@philips.com



“With GreenParking we have received a complete new lighting system. Easily installed and set-up, and supplied via a single purchase.”

Nemanja Brankovic
Project Manager Bygg-Göta Göteborg AB

