

# PHILIPS

## Smart Cities

Los Angeles

USA

# Los Angeles

is blazing the trail for connected street lighting

With Philips CityTouch, the city of Los Angeles remotely manages more than 100,000 street lights to create a more livable city.

In 2015, Los Angeles Mayor Eric Garcetti launched a Great Streets Initiative to revitalize neighborhoods by making the streets more pedestrian-friendly. New street lighting technology that can ensure better and more reliable lighting operations was an important part of the plan. Ed Ebrahimian, director of the Bureau of Street Lighting, held the responsibility for deploying this new street lighting technology for the city.

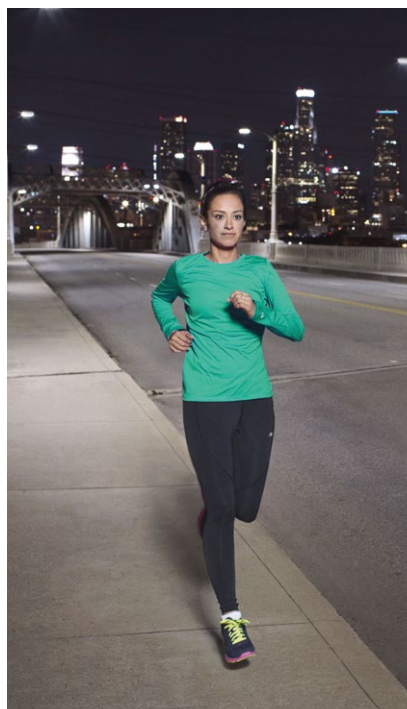
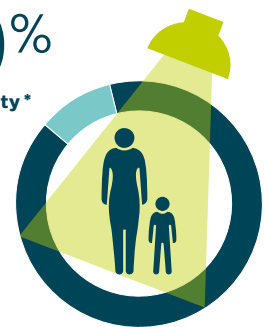
After piloting several different systems, Ebrahimian selected Philips CityTouch due to its numerous capabilities, including remote monitoring, automatic notification of outages and other events, accurate lighting asset information, integration with the bureau's existing management systems, future-proofing through software as a service delivery, and more.

The CityTouch system was deployed using connector nodes with plug-and-play activation, allowing each luminaire to be auto-location enabled

and to commission itself. The nodes are not only easy to install, but are also compatible with any luminaire vendor or type.

With CityTouch in place, the Bureau no longer has to depend on scouting patrols or citizen reports to identify outages. The accurate data provided by CityTouch eliminates much of the on-site investigation previously performed by work crews prior to repairs, reducing response times from days to hours.

**+10%**  
sense of security\*



“

Street lights play a major role for people at night, whether they're walking their dog, driving, conducting business or visiting a restaurant.

**Good lighting makes people feel a lot safer,** so it has become a very important aspect of the city's infrastructure.”

**Ed Ebrahimian,**

Director, Bureau of Street Lighting, City of LA

Find out more about **CityTouch**

Los Angeles  
**by the numbers:**

**215,000**  
street lights

**400**  
different street  
light styles

**110,000**  
CityTouch  
connector nodes

**4,500**  
miles of illuminated  
roadway

**165,000**  
street lights  
converted to LED

\*Source: Municipal Street Lighting Consortium, City of L.A. (2012)