

PHILIPS

CityTouch

Connector kit



Future-proof your city

with connected lighting

Upgrade your installed street lights with the CityTouch connector kit and discover what lighting can do beyond illumination.

A nighttime photograph of a city skyline with illuminated skyscrapers in the background. In the foreground, a large stadium parking lot is filled with cars, illuminated by bright streetlights. The scene is viewed from an elevated position, showing a grassy hillside in the middle ground.

What is

CityTouch?

CityTouch is a revolutionary connected street lighting management platform that will help you take the next step with your city lighting. Remote, data-rich monitoring and management lets you improve the quality of city life with the best possible illumination experiences and extraordinary value beyond illumination.



CityTouch is an end-to-end street lighting management system that integrates connected devices, intuitive software-as-a-service applications, and specialized services to transform your city's lighting operations.

The CityTouch connector kit is a nicely designed unit that transforms any street light. Once installed on an existing street light, the connector kit automatically connects with CityTouch software applications via the public mobile communications network, giving you status and control.

The CityTouch connect application lets you securely and remotely monitor and manage all connected light points through a real-time, map-based view using any standard web browser. You can control streetlights remotely, set up dimming schedules, measure energy consumption, and receive outage notifications.

The CityTouch workflow application adds rich data visualization and reporting capabilities, provides

a highly customizable lighting asset database, and offers lighting-related workflow management tools.

Both CityTouch apps are delivered over the internet using software-as-a-service (SaaS), making the system location-independent and available at any time to multiple users. SaaS ensures secure data storage, continuous operation, and automatic updates while minimizing IT expenses.

Together, CityTouch connect app gives you detailed and clear insight into your city's lighting performance. This insight allows you to manage your lighting assets more efficiently, make more informed decisions, and be more responsive to the needs of citizens in different locations throughout the city.

What is the connector kit?



Being connected changes everything. The CityTouch connector kit lets you upgrade your city's street lights to connect to the CityTouch lighting management platform.

Retrofit street lights with connectivity

With the CityTouch connector kit, you can simply upgrade an existing street light by mounting a compact connector kit to the pole. The kit fits within the width of the pole, and requires only a single drilled hole, standard Band-IT metal bands or similar, and easy wiring. The connector kit works with street lights from almost any manufacturer, both LED and conventional, dimmable and not-dimmable lights—a key consideration for the city, with its diversity of street lighting assets.

Commissioning is automatic. As soon as a CityTouch connector kit is installed, it starts transmitting location and operational information via the public mobile network.

Communication means control

With easy installation, the CityTouch connector kit lets your city enjoy the benefits of Philips connected street lighting quickly and with minimal disruption.

Once you have installed connector kits on the street lights, you can start using the CityTouch software applications to monitor status and energy consumption and to remotely control each light point.

CityTouch automatically notifies you when there's an outage or other system disruption. Because CityTouch sends rich and accurate data about the location of the affected light point, its type and other specifications, and the nature of the issue, you no longer have to depend on overnight scouting patrols or wait for citizen reports.

Accurate data from CityTouch eliminates much of the on-site investigation that work crews typically have to perform prior to repairs, reducing response times from days to hours.

CityTouch provides you with the knowledge you need to save time and costs, and improve operations by sending the right person with the right tools to the right location.

“Many cities have run LED renovation programs, but also have historical lights in the city center, and now want to ensure that these street lights get connected. We have developed the CityTouch connector kit, so that cities can **upgrade their lighting infrastructure** independent whether new installed or retrofit.”

Peter Zink

Global sub-segment manager, Roads and Streets
Philips Lighting



Unlocking your city's potential with CityTouch

With the CityTouch connector kit, you can quickly and easily upgrade your existing streetlights and immediately take advantage of the operational efficiencies and energy savings that CityTouch can deliver. But the benefits to your city don't stop there.

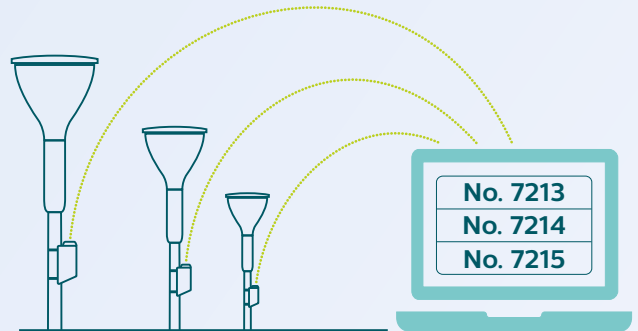


The connector kit has an elegant architectural design that harmonizes with urban lighting solutions. Additionally the kit can easily be installed.

By storing and analyzing street lighting data over time, and by combining it with other sources of data, such as foot and automobile traffic patterns, you can deliver the right levels of light when and where they're needed. Properly and reliably lit streets feel safer and contribute to a vibrant nighttime community and economy.

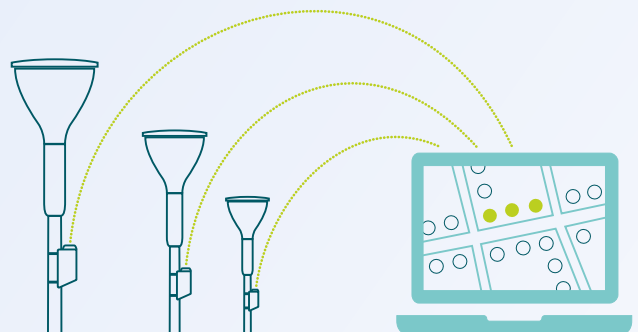
Connected street lighting with CityTouch is an integral part of creating a smart, sustainable city. With the connector kit, you can start ensuring your city's future today, with immediate results and improved operations.

Key connector kit advantages:



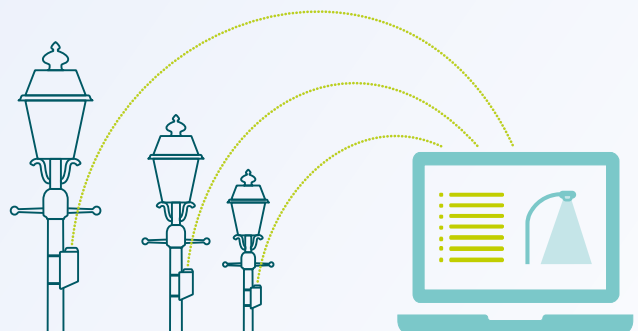
No on-site commissioning

Luminaires automatically connect to CityTouch system once installed



Automatic location

Luminaires are auto-located on the map with all asset data in place



Upgrade existing street lights

Connect existing lighting infrastructure to CityTouch

Flexible, open and secure

Philips CityTouch is an end-to-end, future-proof solution, able to support your city's changing requirements over time.

Flexible

CityTouch is extremely flexible, allowing you to configure the system to your specifications.

CityTouch can monitor and manage an unlimited number of lighting assets, so you can add street lights and other assets over time without reinstalling existing connector kits or taking the system offline.

Because each connector kit communicates with CityTouch independently, there are no centralized points of failure: if one street light goes out, the others around it are unaffected. You can control single light points or all light points together, or you can group and control light points however you wish.

CityTouch updates its software and connectivity firmware wirelessly and automatically. This ensures that you always have the latest features and functions, with no physical intervention required.

Open

CityTouch is luminaire-independent: the connector kit works with any street light from any manufacturer, whether Philips or non-Philips, whether LED or non-LED.

CityTouch uses standard web services to connect to city IT infrastructures via the mobile network, so no proprietary networks are required.

With published APIs, you can integrate CityTouch into other city management systems already in use. This allows you to bring your CityTouch system together with other connected systems to create a new digital ecosystem that can deliver new levels of responsiveness and resiliency.

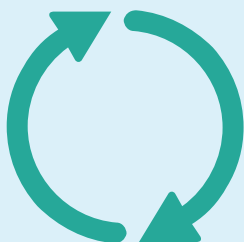
Philips also offers cost-effective integration services and technical support, so your city is always ready for the future.

Secure

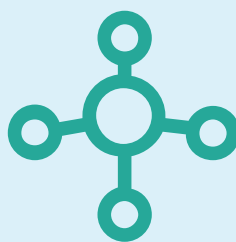
Your data deserves to be protected, so CityTouch always applies the latest state-of-the-art security measures along with end-to-end encryption and two-factor authentication.

Philips uses the same level of security as online banking and brokerage houses do, ensuring that your sensitive data is transmitted privately and stored safely.

Philips CityTouch: an open system



CityTouch connector kit works with almost any type of street light from any manufacturer



CityTouch communicates via the mobile network: no proprietary networks



With APIs, customers can integrate CityTouch into their existing systems

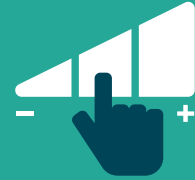
Philips CityTouch key features:



Remote monitoring



Automatic outage notification



Efficient workflow management



Future-proof



Accurate lighting data

A CityTouch efficiency **in focus:**

Ensuring perfect city lighting



CityTouch repair process

The automatic failure notification greatly simplifies the maintenance process

1. Fault occurs and automatically appears on screen (with fault type, luminaire specs, and location)
2. Repair is automatically scheduled
3. Repair work proceeds
4. Perfect lighting resumed



Traditional repair process

Cities rely on night scouting and citizen reports to identify light outages

1. Fault occurs
2. Fault reported by citizen or by night scouting team
3. Maintenance visits luminaire for check
4. Fault type, luminaire specs, and location reported
5. Repair scheduled
6. Maintenance re-visits the luminaire to repair
7. Perfect lighting resumed



