

**PHILIPS**

*CityTouch*

CityTouch Ready  
luminaires



# Plug-and-play connected lighting

Technology for today and tomorrow

Upgrade your city with LED CityTouch Ready luminaires and benefit from automatic commissioning, location and data upload.



# What is **CityTouch?**

CityTouch is a revolutionary connected street lighting management platform that will help you take the next step with your city lighting. Remote, data-rich monitoring and management lets you improve the quality of city life with the best possible illumination experiences and extraordinary value beyond illumination.

CityTouch is an end-to-end street lighting management system that integrates connected devices, intuitive software-as-a-service applications, and specialized services to transform your city's lighting operations.

CityTouch Ready luminaires are true plug-and-play solutions. Once installed, they connect automatically to the CityTouch system, upload their location and technical data, and start transmitting operational information. No extra controls or network hardware is needed.

The CityTouch connect application lets you securely and remotely monitor and manage all connected light points through a 'close-to-real-time' map-based view, using any standard web browser. You can control streetlights remotely, set up dimming schedules, measure energy consumption, and receive outage notifications.

The CityTouch workflow application adds rich data visualization and reporting capabilities, provides a highly customizable lighting asset

database, and offers lighting-related workflow management tools.

Both CityTouch apps are delivered over the internet using software-as-a-service (SaaS), making the system location-independent and available at any time to multiple users. SaaS ensures secure data storage, continuous operation, and automatic updates while minimizing IT expenses.

Together, CityTouch Ready luminaires, software apps, and wireless communications give you detailed and clear insight into your city's lighting performance. This insight allows you to manage your lighting assets more efficiently, make more informed decisions, and be more responsive to the needs of citizens in different locations throughout the city.

# CityTouch Ready



READY

# luminaires

All CityTouch Ready luminaires are true plug-and-play solutions which can be handled exactly like traditional luminaires during installation.

Once installed, the luminaires connect automatically to the CityTouch system, upload their location and technical data, and start transmitting operational information.

Integration is seamless. No additional hardware or special commissioning is needed and the user-friendly interface of the CityTouch software means you can control your city's lighting simply

and intuitively from a desktop computer via the CityTouch street lighting management system. Philips offers a wide range of luminaire shapes and styles to suit your city's different areas. From the streets and squares, to urban and suburban areas, to the many different parks and plazas, there is a luminaire style which will fit in effortlessly.

[Click here to find out more about CityTouch](#)

## Go with us

# Grow with us

In the Smart City age, connectivity, flexibility and open technology are everything. It's why we came up with the CityTouch Ready Partner Program.

Cities can enjoy connected lighting management, without being locked in to a single luminaire vendor. While vendors can easily make almost any of their LED luminaires CityTouch-ready simply by adding the CityTouch connector component. Win-win.



**Enjoy total flexibility**  
Almost any type or brand of LED luminaire can be made CityTouch-ready



**Avoid vendor lock-in**  
You're free to choose the luminaires that are right for your city



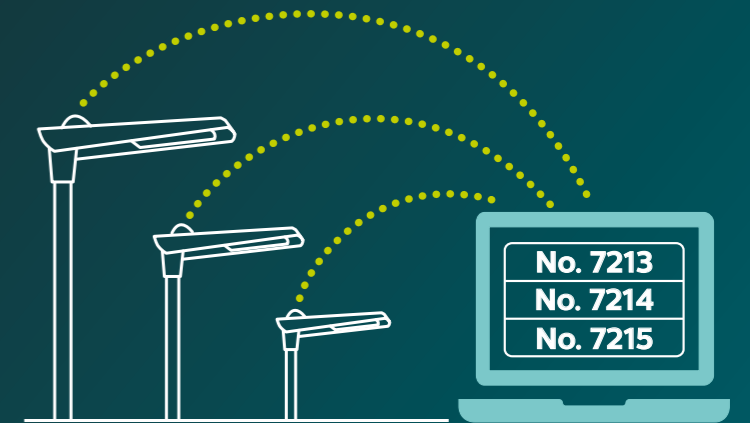
**Peace of mind**  
We provide our Certified Partners with full training to make their luminaires CityTouch-ready

[Click here to find out more about CityTouch Ready Partner Program](#)



Installation of Luma, Siegburg, Germany

# Key advantages:



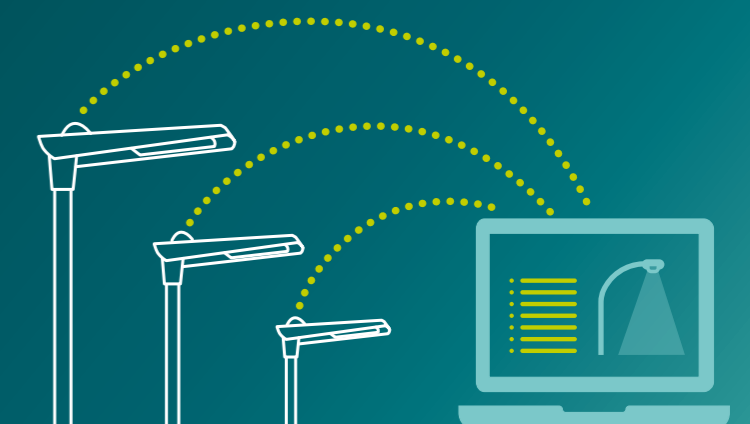
### Automatic commissioning

Luminaires automatically connect to CityTouch system once installed



### Automatic location

Luminaires are auto-located on the map with all asset data in place



### Automatic data upload

All luminaire data automatically updates to your system

# Flexible, open and secure

**Philips CityTouch is an end-to-end solution**, able to support your city's changing requirements over time.

## Flexible

CityTouch is extremely flexible, allowing you to configure the system to your specifications.

CityTouch can monitor and manage an unlimited number of lighting assets, so you can add street lights and other assets over time without reinstalling existing connector nodes or taking the system offline.

Because each connector node communicates with CityTouch independently, there are no centralized points of failure: if one street light goes out, the others around it are unaffected. You can control single light points or all light points together, or you can group and control light points however you wish.

CityTouch updates its software and connector node firmware wirelessly and automatically. This ensures that you always have the latest features and functions, with no physical intervention required.

## Open

CityTouch is luminaire-independent: the connector node works with any street light from any manufacturer, whether Philips or non-Philips.

CityTouch uses standard web services to connect to city IT infrastructures via the mobile network, so no proprietary networks are required.

With published APIs, you can integrate CityTouch into other city management systems already in use. This allows you to bring your CityTouch system together with other connected systems to create a new digital ecology that can deliver new levels of responsiveness and resiliency.

Philips also offers cost-effective integration services and technical support, so your city is always ready for the future.

## Secure

In the Internet of things (IoT) era, securely protecting your data is essential, so CityTouch always applies the latest state-of-the-art security measures along with end-to-end encryption and two-factor authentication.

Philips uses the same level of security as online banking and brokerage houses do, ensuring that your sensitive data is transmitted privately and stored safely.

# Philips CityTouch key features:



Plug-and-play installation



Remote monitoring



Automatic outage notification



Technology for today and tomorrow



Accurate lighting data

## Philips CityTouch: an open system



CityTouch connector node works with almost any type of street light from any manufacturer



CityTouch communicates via the mobile network: no proprietary networks



With APIs, customers can integrate CityTouch with their existing systems

[Click here to find out more about CityTouch: an open system for a smart city](#)

## A CityTouch efficiency in focus:

### Ensuring perfect city lighting



#### CityTouch repair process

The automatic failure notification greatly simplifies the maintenance process

1. Fault occurs and automatically appears on screen (with fault type, luminaire specs, and location)
2. Repair scheduled
3. Repair work proceeds
4. Perfect lighting resumed



#### Traditional repair process

Cities rely on night scouting and citizen reports to identify light outages

1. Fault occurs
2. Fault reported by citizen or by night scouting team
3. Maintenance team finds and checks luminaire
4. Fault type, luminaire specs, and location reported
5. Repair scheduled
6. Repair work proceeds
7. Perfect lighting resumed



