

# PHILIPS Day-Brite CFI

Recessed

SofTrace LED 2x4

with tunable white  
technology  
4000/4400/4600/5300 or  
6200 lm



Project: \_\_\_\_\_

Location: \_\_\_\_\_

Cat.No: \_\_\_\_\_

Type: \_\_\_\_\_

Lamps: \_\_\_\_\_ Qty: \_\_\_\_\_

Notes: \_\_\_\_\_

Philips Day-Brite / Philips CFI SofTrace LED recessed architectural provides excellent visual comfort. Its modern architectural styling complements any space. Tunable white light allows color temperature flexibility between 2700K and 6500K CCT.

## Ordering guide

Example: 2STG53L8TW-4-D-UNV-DTW

Width	Family	Ceiling Type	Lumen Package <sup>1</sup>	Color Temp.	Length	Center Diffusers	Voltage	Driver	Options
<input type="text" value="2"/>	<input type="text" value="ST"/>	<input type="text"/>	<input type="text"/>	<input type="text" value="8TW"/> –	<input type="text" value="4"/> –	<input type="text"/> –	<input type="text" value="UNV"/> –	<input type="text" value="DTW"/> –	<input type="text"/>
2 2'	ST Softrace	G Grid F Flange Z Z Spline / Modular	40L 4000 nominal delivered lumens 44L 4400 nominal delivered lumens 46L 4600 nominal delivered lumens 53L 5300 nominal delivered lumens 62L 6200 nominal delivered lumens	8TW 80 CRI, 2700K thru 6500K white light tuning	4 4'	D Diffuse (ribbed) DS Diffuse (smooth) PMW Round perf w/ white overlay	UNV Universal voltage 120-277V	DTW Dual channel tunable white	EMLED Internal emergency, 1100lm nominal, 6500K color circuit only F1/D 3/8" twin flex, 3 wire 18 gauge 6' for dimmable luminaires F2/TW 3/8" single flex, 7 wire 18 gauge 6' for dimmable luminaires GLR Fusing, fast blow

### Footnotes:

<sup>1</sup> The lumen values stated above are relevant only to the "D" center diffuser option. For lumen values with the other diffusers, check the photometrics tests online for those specific catalog numbers.

### Accessories (order separately)

- FKDP24 Flange conversion kit 2'x4'
- FMA24 2'x4' "F" mounting frame for NEMA "F" mounting



# 2ST SofTrace LED recessed 2x4

with tunable white technology, 4000/4400/4600/5300/6200 lumens

## Application

- Subtle enclosure curves provide architectural styling to complement any space.
- Smooth brightness across the face of the luminaire prevents glare and provides excellent visual comfort.
- Directs a controlled amount of light to higher angles to eliminate "cave effect" without creating glare.
- Ideal for modern offices, schools and retail environments.
- Excellent luminaire efficacy provides significant energy savings.
- High CRI source provides excellent color rendering.
- Grid, Flange or Z-spline/ Modular models available.

## Construction/Finish

- One piece die-formed embossed steel housing provides added rigidity, resists damage during shipment/handling.
- T-bar grid clips are built into luminaire ends for quick and easy installation, no extra parts required.
- Suitable for end-to-end mounting.
- End K.O.s for thru wiring or conduit entry in shallow plenums.

## Electrical

- Must order compatible Philips Lighting control system.
- Driver and LED boards are easily accessible from below. LED boards are individually replaceable if required.
- Five-year luminaire warranty including LED boards and driver.
- High efficiency LEDs have 60,000 hour L70 rated life (defined as 70% lumen maintenance.)
- cETLus listed to UL standards, suitable for damp locations.

## Enclosure

- Choice of three enclosures:
  - Single piece thermo formed acrylic lens with ribbed center diffuser (D)
  - Single piece acrylic lens with smooth center diffuser (DS)
  - Three piece acrylic lens with round perforated steel center diffuser (PMW)

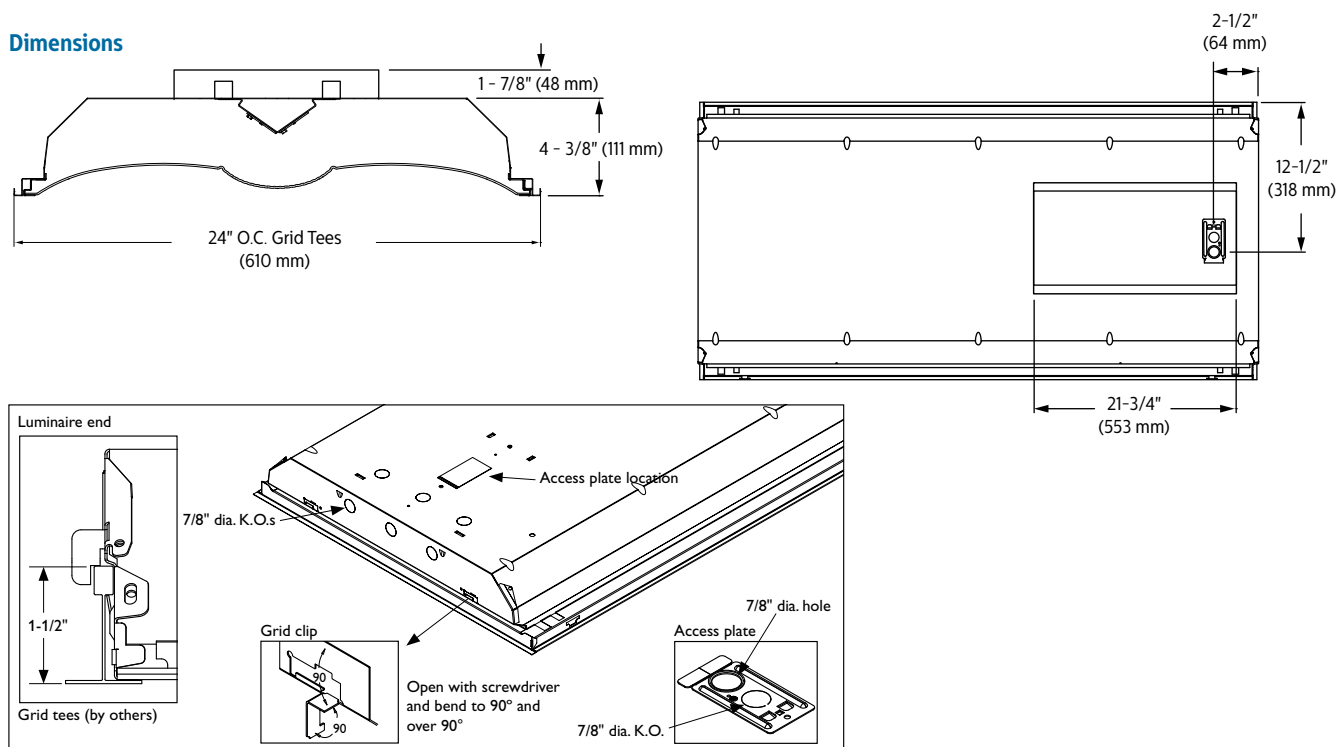
## General Notes

- All options factory installed.
- All accessories are field installed.
- Many luminaire components, such as reflectors, refractors, lenses, sockets, lampholders, and LEDs are made from various types of plastics which can be adversely affected by airborne contaminants. If sulfur based chemicals, petroleum based products, cleaning solutions, or other contaminants are expected in the intended area of use, consult factory for compatibility.

## Controls

- Luminaires are not sold individually and are only compatible with load controllers, sensors, user interfaces and front end software from Philips. Philips controls platform allows for more flexibility with customized lighting scenes and behaviors as well as scalability of the tunable white solution into a more extensive lighting network management system. To learn more about the Philips controls solution please visit our tunable white page or <http://www.lightingproducts.philips.com/our-brands/philips-controls/dynalite.html>

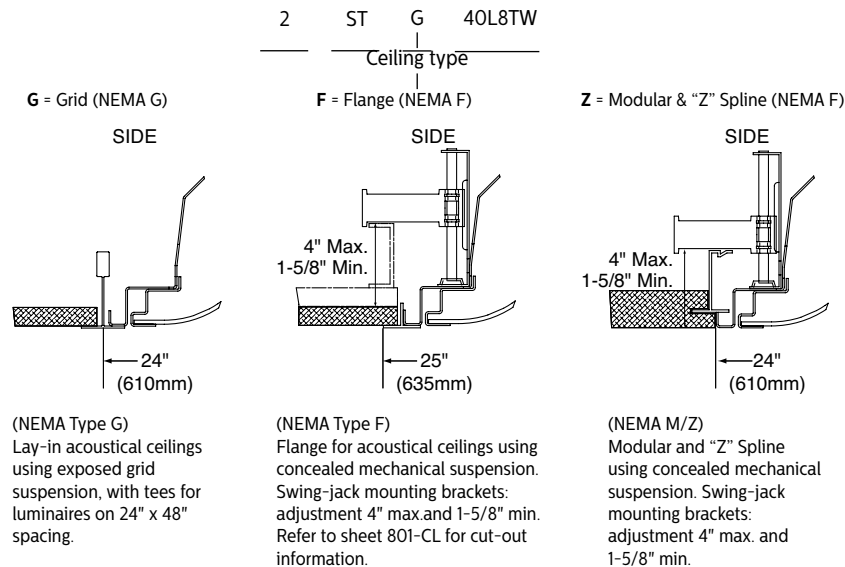
## Dimensions



# 2ST SofTrace LED recessed 2x4

with tunable white technology, 4000/4400/4600/5300/6200 lumens

## Ceiling configuration



## Electrical Specifications

Input Voltage	120V				277V			
Nominal CCT	2700K				2700K			
Nominal Lumens	4000	4400	4600	5300	4000	4400	4600	5300
Commissioned State								
Power (W)	41.8	47.0	55.9	65.7	41.5	46.4	55.0	64.3
Current (A)	0.4	0.4	0.5	0.6	0.2	0.2	0.2	0.3
Power Factor	1.0	1.0	1.0	1.0	0.9	0.9	0.9	0.9
THD (%)	14.0	13.0	11.0	10.0	17.0	16.5	16.0	14.5
Off State Power (W)	0.6	0.6	0.6	0.6	0.9	0.9	0.9	0.9
Non-Commissioned State								
Power (W)	78.0	87.0	102.0	116.0	77.0	86.0	101.0	113.0
Current (A)	0.7	0.7	0.9	1.0	0.3	0.3	0.4	0.4

## Photometry

2x4 SofTrace LED recessed with tunable white, 4400 nominal delivered lumens, diffuse, 2700K CCT

LER – 104

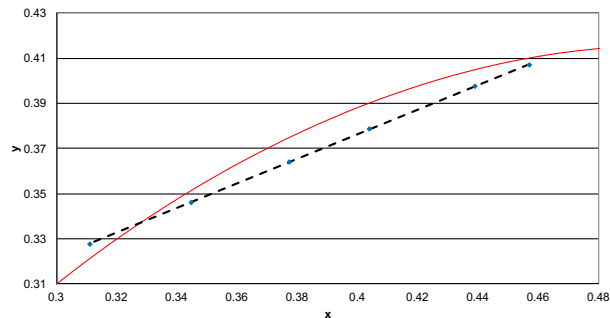
Catalog No.		2STG44L8TW-4-D-UNV-DTW		Candlepower				Light Distribution			Average Luminance				
Test No.		36600		Angle	End	45	Cross	Degrees	Lumens	% Luminaire	Angle	End	45'	Cross	
S/MH		1.3		0	1519	1519	1519	0-30	1181	27.8	45	1936	2159	2278	
Lamp Type		LED		5	1499	1512	1519	0-40	1937	45.5	55	1775	2036	2139	
Lumens/Lamp		4255		15	1437	1460	1478	0-60	3405	80.0	65	1469	1786	1911	
Input Watts		41		25	1312	1358	1396	0-90	4254	100.0	75	1199	1557	1710	
CCT		2700K		35	1134	1210	1272	0-180	4255	100.0	85	771	1329	1145	
				45	921	1027	1083								
				55	685	785	825								
				65	418	508	543								
				75	209	271	298								
				85	45	78	67								
Comparative yearly lighting energy cost per 1000 lumens – \$2.31 based on 3000 hrs. and \$.08 pwr KWH.															
The photometric results were obtained in the Philips Day-Brite laboratory which is NVLAP accredited by the National Institute of Standards and Technology.															
Photometric values based on test performed in compliance with LM-79.															
Coefficients of Utilization															
EFFECTIVE FLOOR CAVITY REFLECTANCE 20 PER (pfc=0.20)															
pcc	80					70					50				
pw	70	50	30			70	50	30			50	30			
RCR															
0	118	118	118			115	115	115			111	111			
1	109	104	100			106	102	97			97	93			
2	98	91	83			95	89	82			84	80			
3	90	80	71			88	78	70			75	68			
4	82	70	61			80	68	60			67	59			
5	76	63	54			73	61	54			59	53			
6	69	56	47			68	56	47			54	46			
7	65	52	42			63	51	42			48	41			
8	60	46	39			58	46	38			45	38			
9	56	42	34			55	42	34			40	34			
10	53	40	32			52	39	32			38	30			

# 2ST SofTrace LED recessed 2x4

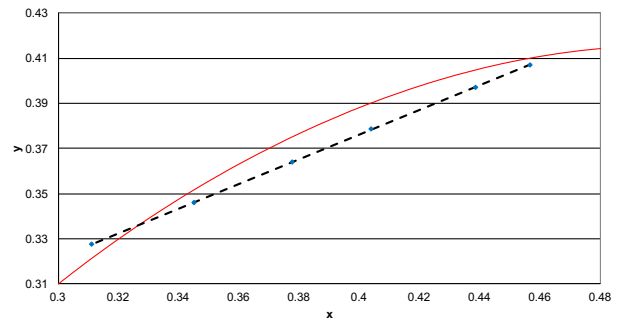
with tunable white technology, 4000/4400/4600/5300/6200 lumens

## Color information

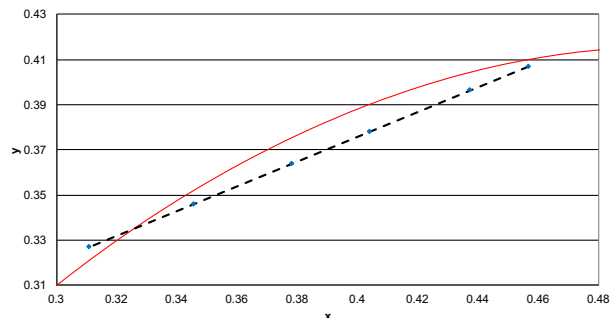
2x4 SofTrace 4000lm	2700K	3000K	3500K	4000K	5000K	6500K
Flux	3790	3798	3805	3885	3811	3919
Power	41.4	42.9	40.7	40.2	38.2	35.4
Efficacy	91.5	88.6	93.5	96.8	99.8	110.7
CCT	2716	2915	3431	3990	5000	6606
CRI	83	84	87	87	87	84
R9	18	23	33	37	32	16
x	0.4568	0.4387	0.4037	0.3774	0.3446	0.3110
y	0.4071	0.3974	0.3784	0.3641	0.3462	0.3278
Duv	-0.0010	-0.0029	-0.0051	-0.0051	-0.0026	0.0034



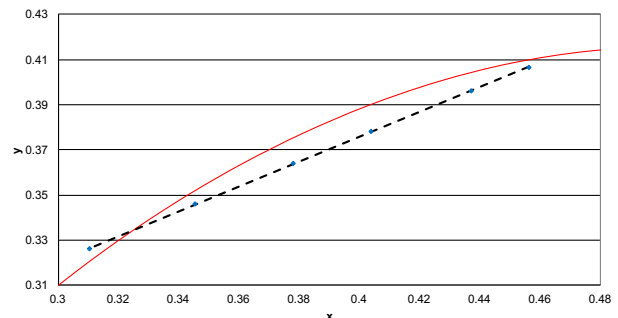
2x4 SofTrace 4400lm	2700K	3000K	3500K	4000K	5000K	6500K
Flux	4247	4257	4259	4346	4254	4349
Power	46.5	47.8	45.2	44.4	42.2	39.4
Efficacy	91.2	89.0	94.3	97.9	100.8	110.3
CCT	2717	2916	3427	3980	4984	6610
CRI	83	84	86	87	87	84
R9	18	23	33	37	34	16
x	0.4567	0.4386	0.4039	0.3777	0.3450	0.3110
y	0.4070	0.3973	0.3784	0.3642	0.3462	0.3275
Duv	-0.0011	-0.0029	-0.0052	-0.0052	-0.0027	0.0033



2x4 SofTrace 4600lm	2700K	3000K	3500K	4000K	5000K	6500K
Flux	4969	5017	4983	5079	4955	5030
Power	55.0	56.2	52.4	51.3	48.7	45.8
Efficacy	90.3	89.3	95.1	99.1	101.9	109.8
CCT	2719	2932	3424	3972	4971	6625
CRI	83	84	86	87	87	84
R9	18	23	32	37	34	16
x	0.4564	0.4372	0.4040	0.3780	0.3454	0.3108
y	0.4068	0.3965	0.3784	0.3641	0.3461	0.3271
Duv	-0.0011	-0.0031	-0.0052	-0.0053	-0.0029	0.0032



2x4 SofTrace 5300lm	2700K	3000K	3500K	4000K	5000K	6500K
Flux	5805	5877	5833	5936	5780	5813
Power	65.6	66.2	61.2	59.7	56.2	53.7
Efficacy	88.5	88.8	95.4	99.5	102.9	108.3
CCT	2722	2934	3423	3965	4962	6654
CRI	83	84	86	87	87	84
R9	17	23	32	36	34	16
x	0.4561	0.4370	0.4039	0.3781	0.3456	0.3104
y	0.4066	0.3962	0.3781	0.3639	0.3459	0.3264
Duv	-0.0012	-0.0032	-0.0053	-0.0055	-0.0031	0.0030



© 2016 Philips Lighting Holding B.V. All rights reserved.  
Philips reserves the right to make changes in specifications and/or to discontinue any product at any time without notice or obligation and will not be liable for any consequences resulting from the use of this publication.  
[philips.com/luminaires](http://philips.com/luminaires)



Philips Lighting North America Corporation  
200 Franklin Square Drive, Somerset, NJ 08873  
Tel. 855-486-2216

Philips Lighting Canada Ltd.  
281 Hillmount Rd, Markham, ON, Canada L6C 2S3  
Tel. 800-668-9008