



PerfectBeam gen.2

Endless possibilities to shape light

Variable Spot and Framing Projector

PerfectBeam gen.2

Endless possibilities to shape light



reddot design award
winner 2019

PerfectBeam gen.2 is a product range with **Superior Light Quality** and **Maximum Beam Flexibility**, allowing **Optimal Art Preservation**.

Main application segment is Museum Lighting. Other application areas include high end (Fashion) Retail Lighting.

PerfectBeam gen.2 strikes the perfect balance between presenting and preserving art, between constantly changing exhibits, and the need for energy efficiency and low maintenance.

Superior Light Quality

Perfect lighting is invisible: it gets out of the way and makes visible what the artist intended. Key to showcasing masterpieces is to present with authentic colors, subtly attracting and guiding the viewer's eye. Perfect lighting makes it easy to see, interpret, understand and appreciate, down to the smallest detail, using light to evoke personal emotions and to create an unforgettable museum experience.

Key Features:

- CRI 94+ (higher CRI on request)
- No halo or spill light
- Crisp light, single shadow
- High color consistency
- Minimal glare

Optimal Art Preservation

Perfect lighting is gentle: it provides good visibility, while adequately protecting precious exhibits. The often contrary demands for good visibility, conservation and compliance with permissible limits for exhibits are now being met using LED lighting. Containing no harmful UV and IR rays, your sensitive exhibits do not need the use of additional filters and protection. Effective yet gentle, PerfectBeam gen.2 is meeting the conservation requirements of the most delicate objects.

Key Features:

- No harming UV/IR radiation to precious exhibits
- Individual dimming and full control of light exposure
- Philips Research has studied the degradation of sensitive painting pigments under illumination with different light sources. They found that PerfectBeam gen.2 LEDs have the lowest damage potential at a given CCT compared to unfiltered incandescent and halogen sources.

Maximum Beam Flexibility

Perfect lighting is versatile: It adapts to constant change in exhibition and lighting needs. PerfectBeam gen.2 creates the perfect light for any exhibit. Its modular design, the variable beam, the beam shaping accessories and onboard dimming ensure maximum flexibility, all from a single spot. Its extreme flexibility makes it easy to adapt to the unique demands of temporary exhibitions and last minute lighting design adjustments.

Key Features:

- Modular design, easy to adapt
- Variable beam angle (7°-55°)
- Beam shaping accessories (linear frontal lens not included, other lens on demand)
- Onboard dimming, DALI, CASAMBI

Available Options

Product: Variable Spot / Framing Projector

Finish: Black / White

Color Temperature: 2700K / 3000K / 4000K

CRI: 94+ **SDCM** < 2

Dimming: Onboard / DALI / ON/OFF / CASAMBI

Accessories: Linear frontal lenses available (not included)

Variable Spot (7° - 55°)



Framing Projector



PerfectBeam gen.2

Variable Spot

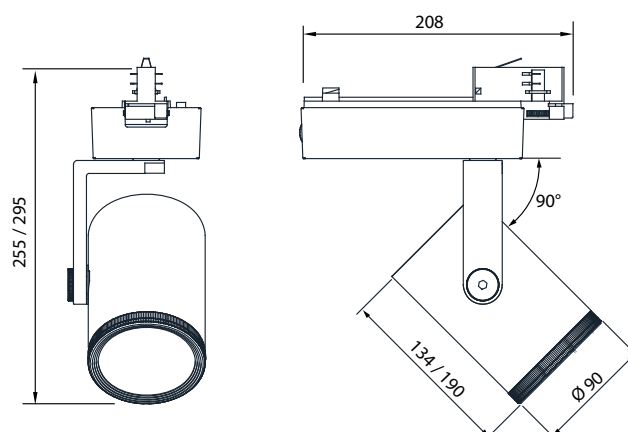
Specifications

Light source	LED module
Power	25 W
Beam angle	NB (7°) - WB (55°)
Luminous flux - 3000K	380 lm (7°) - 1560 lm (55°)
Correlated Color Temperature	2700K / 3000K / 4000K
Color Rendering Index	CRI 94+ Higher CRI on request
Standard deviation color matching	<2
Median useful life L80B50	50,000 hours
Median useful life L90B50	25,000 hours
Average ambient temperature	+25 °C
Driver failure rate	1% per 5,000 hours
Operating temperature range	0 to +35 °C
Driver	Built-in
Mains voltage	220 or 240 V / 50-60 Hz
Dimming	Onboard Dimming (3% to 100%) DALI dimming ON/OFF CASAMBI (OPT)
Material	Gearbox: plastic Head and heatsink: aluminum Frontal lens: PMMA
Color	Black White
Weight	1,6 Kg
Connection	Push-in connector or with pull relief. Track connector (3C)
Installation	On 3-circuit track (3C)
Accessories	<ul style="list-style-type: none"> • Linear frontal lens (not included) • Other lenses available on request
Warranty	5 years

Variable spot (7° - 55°)



Technical drawings



PerfectBeam gen.2

Variable Spot

Interchangeable lenses for beam shaping

Inspired by precision optics like camera lenses, this luminaire range comes with a zoom mechanism and a number of beam shaping lenses that are easy to adapt.



Small beam



Medium beam



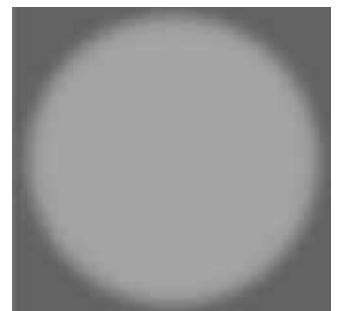
Wide beam

7 degrees

55 degrees



Soft frontal lens included



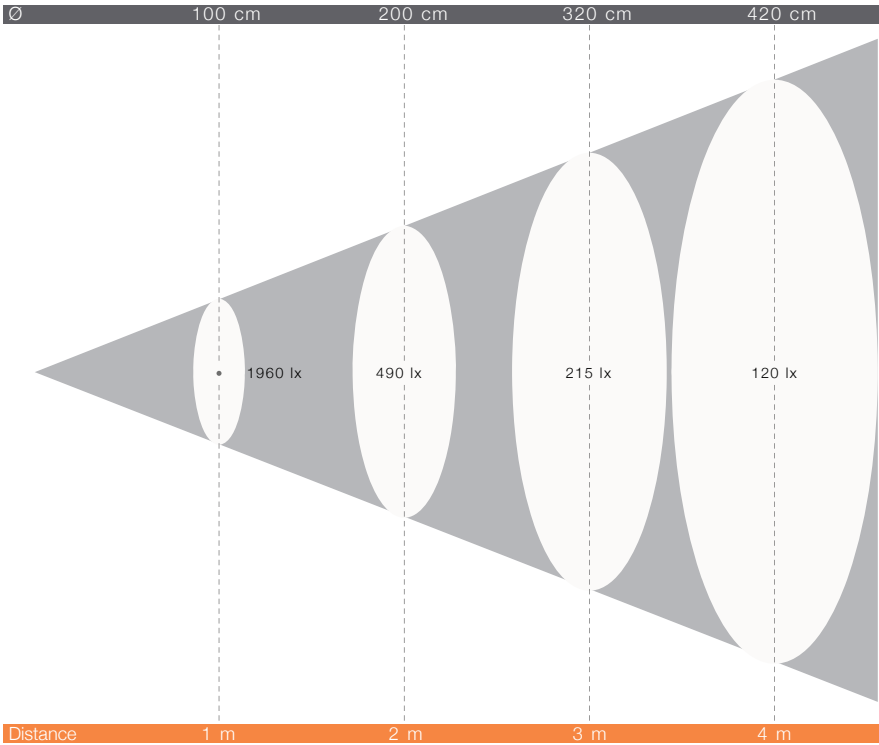
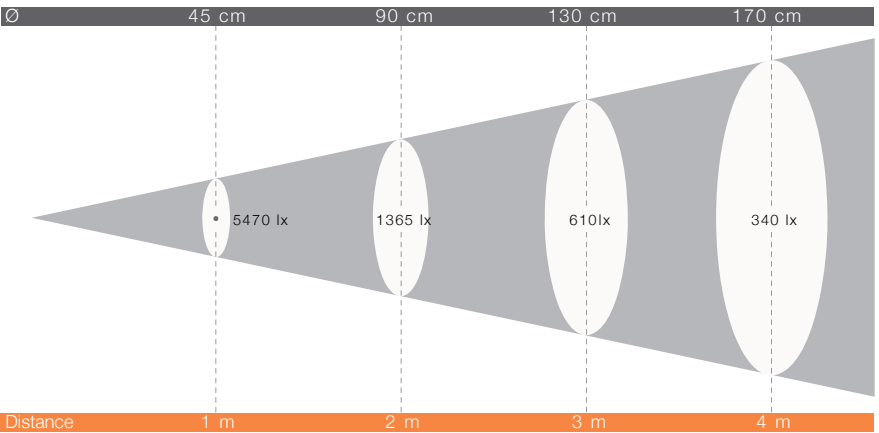
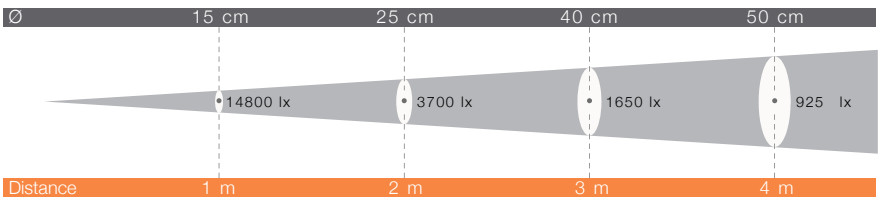
Linear frontal lens not included



PerfectBeam gen.2

Variable Spot

Output details



www.philips.com/perfectbeam-gen2
For further detail about photometrics please contact us. Contact information can be found at the back of this brochure.

PerfectBeam gen.2

Framing Projector

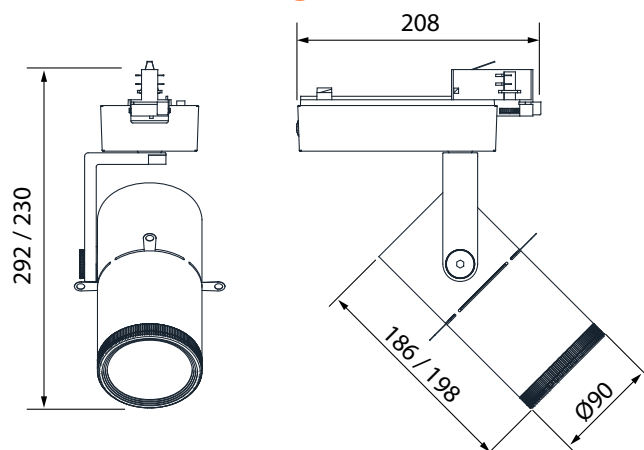
Specifications

Light source	LED module
Power	23 W
Beam angle	30° (framing optic + focus function)
Focus mechanism	Sharp to soft edges possible
Luminous flux - 3000K	920 lm
Correlated Color Temperature	2700K / 3000K / 4000K
Color Rendering Index	CRI 94+ Higher CRI on request
Standard deviation color matching	<2
Median useful life L80B50	50,000 hours
Median useful life L90B50	25,000 hours
Average ambient temperature	+25 °C
Driver failure rate	1% per 5,000 hours
Operating temperature range	0 to +35 °C
Driver	Built-in
Mains voltage	220 or 240 V / 50-60 Hz
Dimming	Onboard Dimming (3% to 100%) DALI dimming ON/OFF (CASAMBI) OPT
Material	Gearbox: plastic Head and heatsink: aluminum Frontal lens: PMMA
Color	Black White
Weight	1,8 Kg
Connection	Push-in connector or with pull relief. Track connector (3C)
Installation	On 3-circuit track (3C)
Warranty	5 years

Framing projector (30°)



Technical drawings



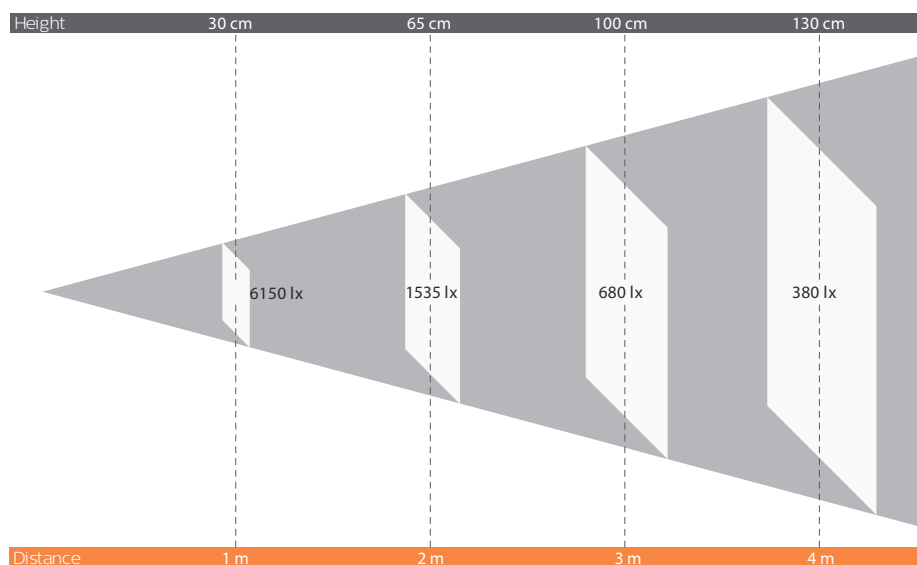
PerfectBeam gen.2

Framing Projector

Interchangeable lenses for beam shaping & Output details



30°
920 lm






www.philips.com/perfectbeam-gen2



For further detail about photometrics please contact us. Contact information can be found at the back of this brochure.

Standard products

Code overview - Variable Spot

product	12nc code	CT	type	n. Led	Power	Frontal Lens	Finish	dimming	Protection class IEC	IP
	910504801516	2700	Variable	1	25	Soft	white	Dimmer on board	II	20
	910504801517	3000	Variable	1	25	Soft	white	Dimmer on board	II	20
	910504801518	4000	Variable	1	25	Soft	white	Dimmer on board	II	20
	910504801519	2700	Variable	1	25	Soft	white	DALI	II	20
	910504801520	3000	Variable	1	25	Soft	white	DALI	II	20
	910504801521	4000	Variable	1	25	Soft	white	DALI	II	20
	910504801522	2700	Variable	1	25	Soft	Black	Dimmer on board	II	20
	910504801523	3000	Variable	1	25	Soft	Black	Dimmer on board	II	20
	910504801524	4000	Variable	1	25	Soft	Black	Dimmer on board	II	20
	910504801525	2700	Variable	1	25	Soft	Black	DALI	II	20
	910504801526	3000	Variable	1	25	Soft	Black	DALI	II	20
	910504801527	4000	Variable	1	25	Soft	Black	DALI	II	20
	910504801540	Linear Lens for Variable Spot								

Code overview - Framing Projector

product	12nc code	CT	type	n. Led	Power	Frontal Lens	Finish	dimming	Protection class IEC	IP
	910504801528	2700	Framing Projector	1	23	Clear	white	Dimmer on board	II	20
	910504801529	3000	Framing Projector	1	23	Clear	white	Dimmer on board	II	20
	910504801530	4000	Framing Projector	1	23	Clear	white	Dimmer on board	II	20
	910504801531	2700	Framing Projector	1	23	Clear	white	DALI	II	20
	910504801532	3000	Framing Projector	1	23	Clear	white	DALI	II	20
	910504801533	4000	Framing Projector	1	23	Clear	white	DALI	II	20
	910504801534	2700	Framing Projector	1	23	Clear	Black	Dimmer on board	II	20
	910504801535	3000	Framing Projector	1	23	Clear	Black	Dimmer on board	II	20
	910504801536	4000	Framing Projector	1	23	Clear	Black	Dimmer on board	II	20
	910504801537	2700	Framing Projector	1	23	Clear	Black	DALI	II	20
	910504801538	3000	Framing Projector	1	23	Clear	Black	DALI	II	20
	910504801539	4000	Framing Projector	1	23	Clear	Black	DALI	II	20

Customized products

Every museum is unique. We fully understand this, offering a wide range of customized products on request. See below some examples of customization options. Our ultimate mission is to bring your vision to life.

Finish

- Other special finishing on request

Color Temperature

- Other customized color temperatures on request

CRI / Spectrum

- Custom LEDs: up to CRI 98+
- Other customized CRI and spectrum on request

Luminous Flux

- Lower light output
- Higher light output

Dimming

- CASAMBI control

Accessories

- Other customized frontal lenses on request

Mounting Options

- Surface mounted or semi-recessed
- Other mounting systems on request

Certifications

- ETL listing
- Other certifications on request

To find out more about our museum lighting solutions and learn about customization and co-creation, please get in touch with us!

Alessandro Carlevatti: alessandro.carlevatti@signify.com

Nicola Polzella: nicola.polzella@signify.com

www.philips.com/museumlighting



Palazzo Madama.
Museo Civico d'Arte Antica.
Turin.

Note

Iti Luce S.r.l. a Signify Company

Lungo Dora P.colletta 113/9

10153 Torino (Italy)

tel. +39 011 765 73 01

Fax. +39 011 853 855

P.iva 05966420019

iltiluce.com
