

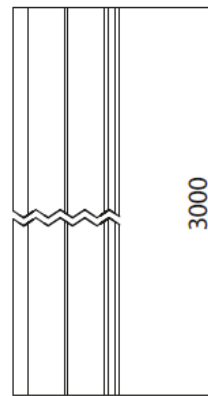
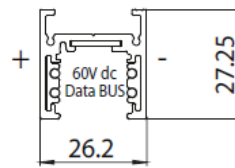
SPOTLIGHTS and PROJECTORS Indoor

Flex Track



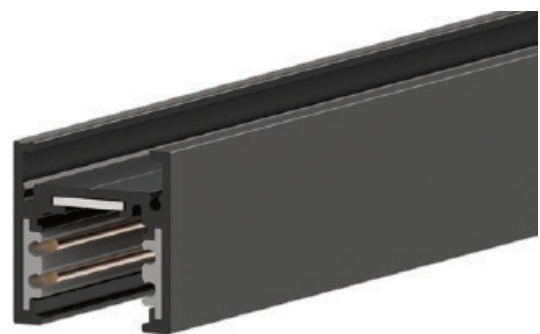
DISEGNO TECNICO DIMENSIONAL DRAWINGS

Dimensioni (mm)
Dimensions (mm)



INFORMAZIONI GENERALI GENERAL INFORMATION

| | |
|---|---|
| Corrente e tensione nominale Rated current and voltage | 15A/60VDC |
| 2 circuiti: 2x +/- 15A/0-60Vdc 2 circuits: 2x +/- 15A/0-60V dc | |
| 1 circuito + Data Bus: +/- 15A/0-60Vdc + D+/D- 1 circuit + Data Bus: +/- 15A/0-60V + D+/D- | |
| Lunghezza: max 3000 mm Length: max 3000 mm | |
| Estruso esterno in alluminio, nero verniciato External extruded body in aluminium, painted black | |
| Estruso isolante in PVC Insulated extruded body in PVC | |
| Conduttori in rame Copper conductors | |
| Classe di protezione IEC IEC Protection class | III |
| Montaggio Mounting | plafone/sospensione surface/suspension |
| Connessione Connections | magnetica magnetic |
| Dimensioni Dimensions | max 3000x27x27mm |
| Peso netto (pezzo) Net weight (piece) | 0.75Kg/m |



| 12NC | codice/code | versione/version | L |
|--------------|-----------------|------------------|--------|
| 910504801715 | MFLEBKBINARIO1E | surface black | 1000mm |
| 910504801716 | MFLEBKBINARIO2E | surface black | 2000mm |
| 910504801717 | MFLEBKBINARIO3E | surface black | 3000mm |