

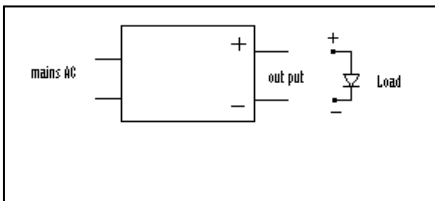
CertaDrive LED 20W 350mA 240V - For Indoor Applications

929000910614	
Brand Name	PHILIPS LED
Description	CertaDrive LED Driver 20W 350mA 240V
Input Voltage	140-2807V
Input Frequency	50/60 Hz

Electrical Specifications

Input Power (W)	Output current(mA)	Output Voltage (V)	Max T Case (Deg C)	Output Power (Max)	Max THD(%)	Min Power Factor	Surge protection (KV)	IP	Application	Weight(gm)
24	350	40 - 60	75	20	10	0.9	1.7	20	Indoor	75

Wiring Diagram LED Driver



Features

Overvoltage Protection	Shutdown @ 300V
Short circuit Protection	Yes
Open circuit protection	Yes
LED Reverse protection	Yes
Mounting Foot Holes	85mm

Dimension Figures

Dimensions	92mmx43mmx33mm	
Fixing	Suitable for M4 Screws	
Connector(Wire Assembly)	Mains	Connector
	Output	Connector
	Black	Negative
	Red	Positive

