

# SmartBright Slim Panel

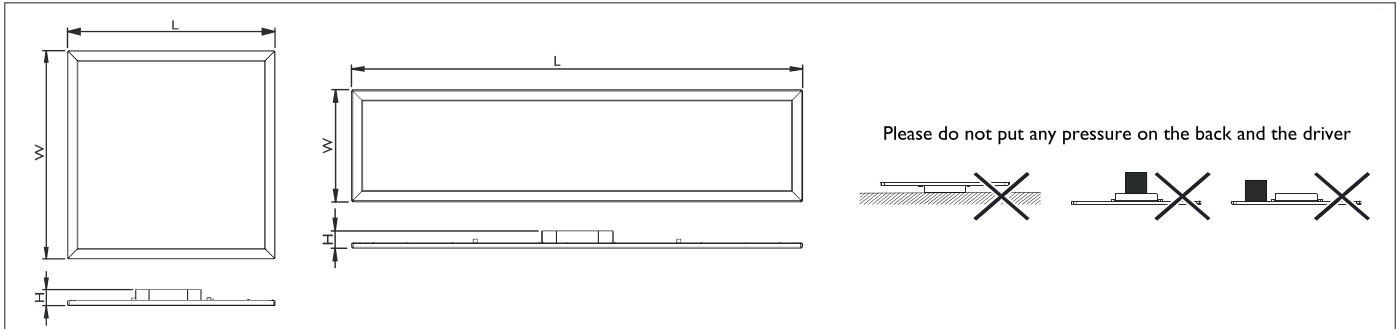
RC091V

Mounting instruction

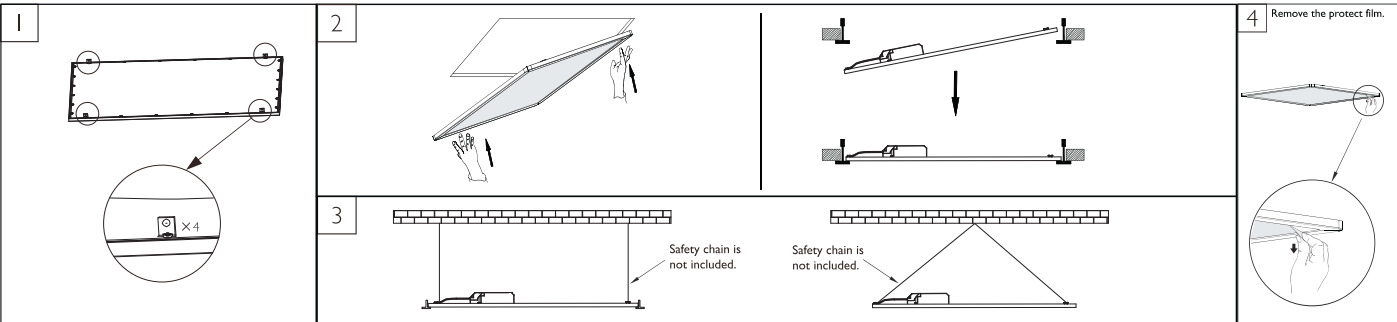
RC091V-M003  
20170407



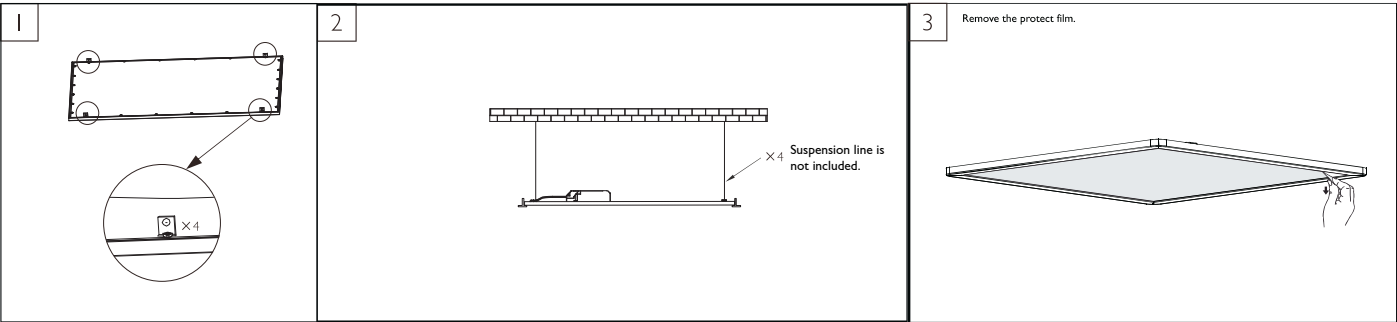
Type	Voltage	Frequency	Power (W)	Dimension LxWxH (mm)	Installation	kg
RC091V LED26S PSU W60L60 CAU	220-240V~	50/60Hz	34	597X597X41	VPC / SUS	2.1
RC091V LED26S PSU W30L120 CAU	220-240V~	50/60Hz	34	297X1197X41	VPC / SUS	2.3
RC091V LED36S PSU W60L60 CAU	220-240V~	50/60Hz	45	597X597X41	VPC / SUS	2.1
RC091V LED36S PSU W30L120 CAU	220-240V~	50/60Hz	45	297X1197X41	VPC / SUS	2.3



## Visible profile Ceiling Mounting (VPC)



## Suspension Mounting (SUS)



Philips Lighting Luminaires (Shanghai) Co., Ltd.  
Address: 2F, Building 6, No. 1805, Huyi Highway, Malu Town, Jiading District, Shanghai, P.R. China  
Postal code: 201801

# PHILIPS

## WARNING — RISK OF OVERHEATING OR FIRE IF THE CLEARANCE DISTANCES ARE COMPROMISED

### RISK OF FIRE – Building insulation must not cover this luminaire

**HCB =50 mm MIC =25 mm SCB =50 mm**

(a) HCB (Height clearance to building element)

Minimum distance as specified by the luminaire manufacturer between the top of the recessed luminaire and any building element above it.

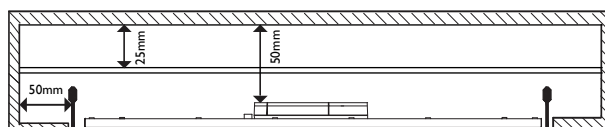
(b) MIC (Minimum insulation clearance)

Minimum distance as specified by the luminaire manufacturer between the top of the recessed luminaire and the building insulation above it.

(c) SCB (Side clearance to building element)

Minimum distance between the side of the recessed luminaire and any building element as specified in AS/NZS 3000, or as specified by the luminaire manufacturer.

(d) Building insulation may abut the sides of the luminaire.

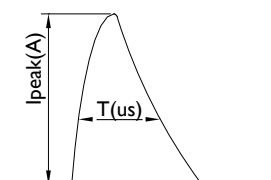


Model	Run Current (A)(@230V)	Start (Inrush) Current(A) / Ipeak (A)	Start Current Duration ( $\mu$ s) / T(@50% of Ipeak) ( $\mu$ s)	Earth Leakage Current (mA)	MCB (Type B 16A) Max no. fitting (pcs)
RC091V LED26S	0.16	8.1	100	<0.7	50
RC091V LED36S	0.2	8.1	100	<0.7	50

The leakage current \*(touch current or protective conductor current) of electrical circuit may be greatly dependent upon electrical supply cables used such as its rating and length, proper connection of electrical supply cables to luminaires and wiring connection topology of luminaires to the supply electrical circuit amongst other site conditions.

\* In some cases referred to as Earth Leakage Current.

#### Inrush Current



1. Please do not remove the product film before installing to avoid scraping or dirtying the optical part.
2. The luminaire must be installed by a qualified electrician and wired in accordance with the local wiring regulations.
3. If the external flexible cord of the luminaire is damaged, it shall be exclusively replaced by the manufacturer or his service agent or a similar qualified person in order to avoid a hazard.
4. The supply cord and cable provided with the luminaire is intended is for indoor use only.
5. For indoor use only.
6. The light source of this luminaire is not replaceable; when the light source reaches its end of life the whole luminaire shall be replaced.
7. The corrosive atmosphere or hazardous materials such as sulfur, chlorine, phthalate, etc. must be avoided during the use and storage.
8. This product complies with the CA90 rating as per AS/NZS 60598.2.2:2016. Care should be taken at installation to allow adequate air flow for optimum lifetime performance.

# PHILIPS