

Philips Dynalite User Interfaces

The ultimate in user interface solutions
– balancing aesthetics and function

PHILIPS
dynalite 

Contents

■ Revolution panels	4-5
■ Standard panels	6-7
■ Touchscreens	8-9
■ iPad and iPhone apps	10-11

Philips Dynalite user interfaces are available in a range of styles and finishes to match any project budget or décor requirements. The range includes wall panels, touchscreens, universal sensors, timer clocks, temperature sensors and downloadable apps.



The Revolution Series features smooth action back-lit buttons with ultimate functionality and a choice of stunning finishes.



Revolution Series

The ultimate in choice and flexibility. Select from a vast range of standard plate finishes or custom finishes including glass, stone, wood, metal and ceramic. Each button can be custom engraved with text or icons that help describe its functionality and the engraving is back-lit. An option of an integrated OLED display allows fully editable text and icons to indicate the current system status.



Range of sizes
Available in the two popular international mounting formats, in single and multi-gang configurations.

Button sizes
Single, double and triple width buttons enhance configuration possibilities.

Two Button heights. Readily accommodates different facia material thickness, allowing for flexibility in architectural design.

Custom features
Vast range of optional devices including faders, displays, key switches and plug sockets for unique control solutions.

Facia options
Suitable for an extensive range of materials providing unlimited décor matching possibilities.

Led indicators
Available in a range of colours enabling clear indication of system status.

Back-lit buttons
Improves panel visibility in all lighting conditions.

Button engraving
Clearly designates buttons functions ensuring intuitive system operation.

DR2PE-GJR-X-C-SG-P-BW-S

North American / Australasian style



DR2PA-KRX-X-W-SG-P-BO-S



DR2PA-JXX-X-C-BG-P-BW-S



DR2PA-AXX-X-W-SG-R-BO-C



DR2P-GXX-X-C-SS-R-BO-C



DR2PA-EXX-X-C-AB-R-BW-C



DR2PA-LQX-X-C-SS-P-BW-S



DR2PA-LQX-X-C-AB-P-BW-S

European / Asian style



DR2PE-QXX-X-C-SS-P-BW-S

OLED display allows fully editable text and icons.



DR2PE-JXX-X-C-SS-R-BO-C



DR2PE-AXX-X-W-SG-R-BO-C



DR2PE-GXX-X-C-SS-R-BW-C



DR2PE-EXX-X-C-AB-R-BW-C



DR2PE-AXX-X-C-BG-R-BO-C



DR2PE-LQX-X-S-SG-P-BO-S

Custom facia engraving options.

Custom panels can be created for any commercial or residential use and engraved to your specific requirements.

Standard Series

Anything but standard, beautifully formed, highly functional and cost effective. Built with the full Philips Dynalite feature set, these simple yet elegant panels bring the full power of the automated system to a touch of a button. Available in a range of different cover finishes* and switch cap colours.

*Details of finishing options are series dependant.

Aesthetically pleasing, and cost-effective method of providing **integrated automation** in commercial buildings and homes.

Available in **two configurations**: single column, up to five buttons and a dual column design for up to ten buttons.

Incorporates a miniature **DyNet control network** socket under the snap-on panel cover, enabling system adjustments and programming from any user control panel on the network.

Available in two profile sizes, the DL2P is **ultra thin**.

Smooth action buttons with **LED** indicators provide tactile and visual feedback and are easily removed for engraving.

Infra-red (IR) receive capabilities have been integrated, eliminating the need for separate sensors where IR remotes are required.



DLP9100 (actual size)



DL2P

DLP

North American / Australasian style



DLP910



DLP920



DLP950



DLP960



DLP970

European / Asian style



DLPE910



DLPE920



DLPE950



DLPE960



DLPE970

Ultra thin slim line option.



DLPE



DPWE



DLPE9100 (actual size)

Standard options (throughout range)

- Slim line mounting
- 2 grid plates available, 1 or 2 columns (5 or 10 buttons)
- Smooth action switches with LED indicator
- Optional engraved buttons
- Optional inbuilt infra-red receiver



Touchscreens

A Philips Dynalite touchscreen adds to any system a new dimension of control opportunities. Each touchscreen supports a range of features that can be used together giving end-users the ultimate in interaction with the automation system. The intuitive screen interface can be custom created to control the various elements within any automation, from one location.



Facia shown in brushed stainless steel finish.

Intuitive touchscreen functionality.

2 screen sizes
DTP100: 146mm x 88mm
DTP170: 233mm x 149mm.

Easily integrates with third-party systems.

DTP170-SS

DTP100-BG



Facia shown in black glass finish.

Incorporates clip-on fascia capability, so other architectural surfaces can be used.

Control any automation from one location.

Screen interface can be custom created.

Different touchscreen sizes are available to suit the required function.



Facia shown in white glass finish.

Colour of facia can also be matched with revolution or custom control panels.

Intuitive floor plans can be displayed for easy user navigation.

Larger touchscreens feature infra-red receive functionality.

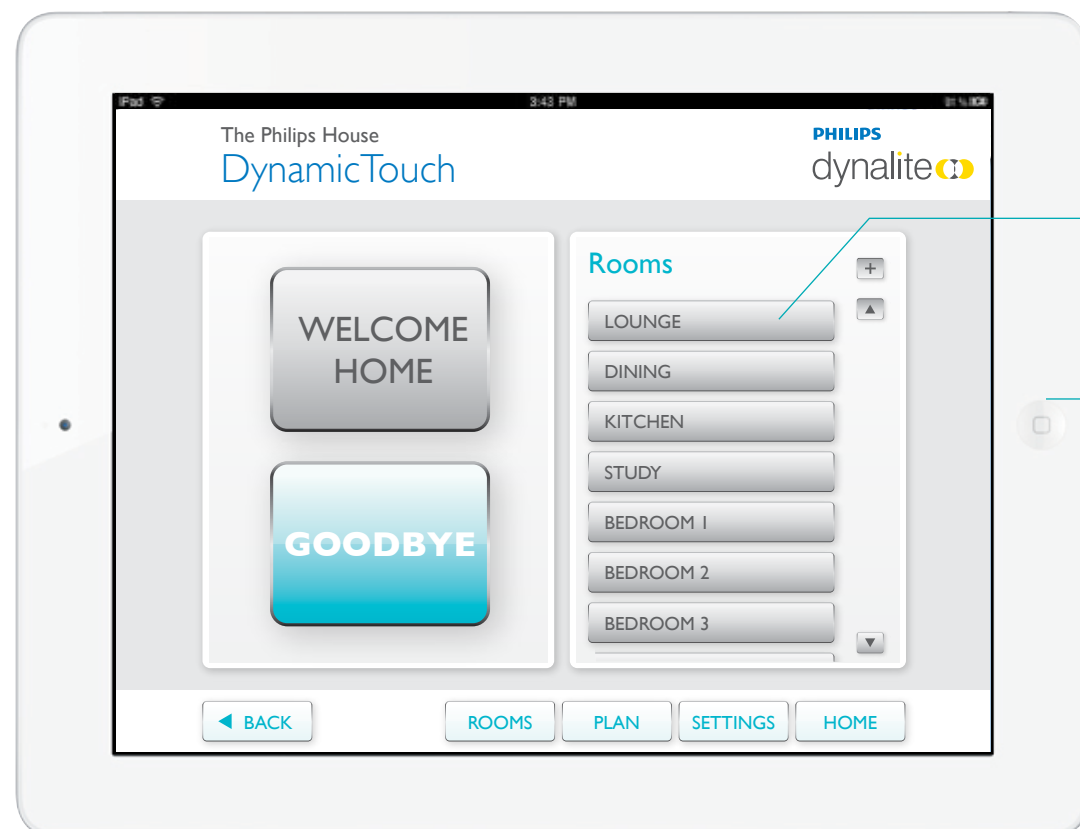
DTP170-WG



DynamicTouch apps

The DynamicTouch app is ideal for 'intelligent homes' and commercial control applications. DynamicTouch combines easy-to-use operability with advanced functions, permitting Philips Dynalite control system elements to be accessed and configured via an iPad or iPhone device.

DynamicTouch



Individual lighting levels can easily be adjusted then saved to a button to be recalled at a later date.

Buttons can be custom labelled to allow for ease-of-use.

The iPad can be placed in wall-mounted cradle and used as a touchscreen operator interface.

Other elements within the space such as blinds and airconditioning may also be added to the scope of control available.



Easy-to-use application will allow iPad and iPhone owners to configure lighting schemes, adjust preset levels and run task-specific customised macros, both remotely and on-site.

Third-party control systems, such as AV, blind and temperature control can also be accessed.

Users will be able to ring changes to third-party systems that are interfaced with the lighting control system network.

DynamicTouch helps consolidate control system functionality – one application to manage all automated processes.

Reduces the total cost of deploying automation and control systems, putting them within reach of a wider range of businesses and homeowners.

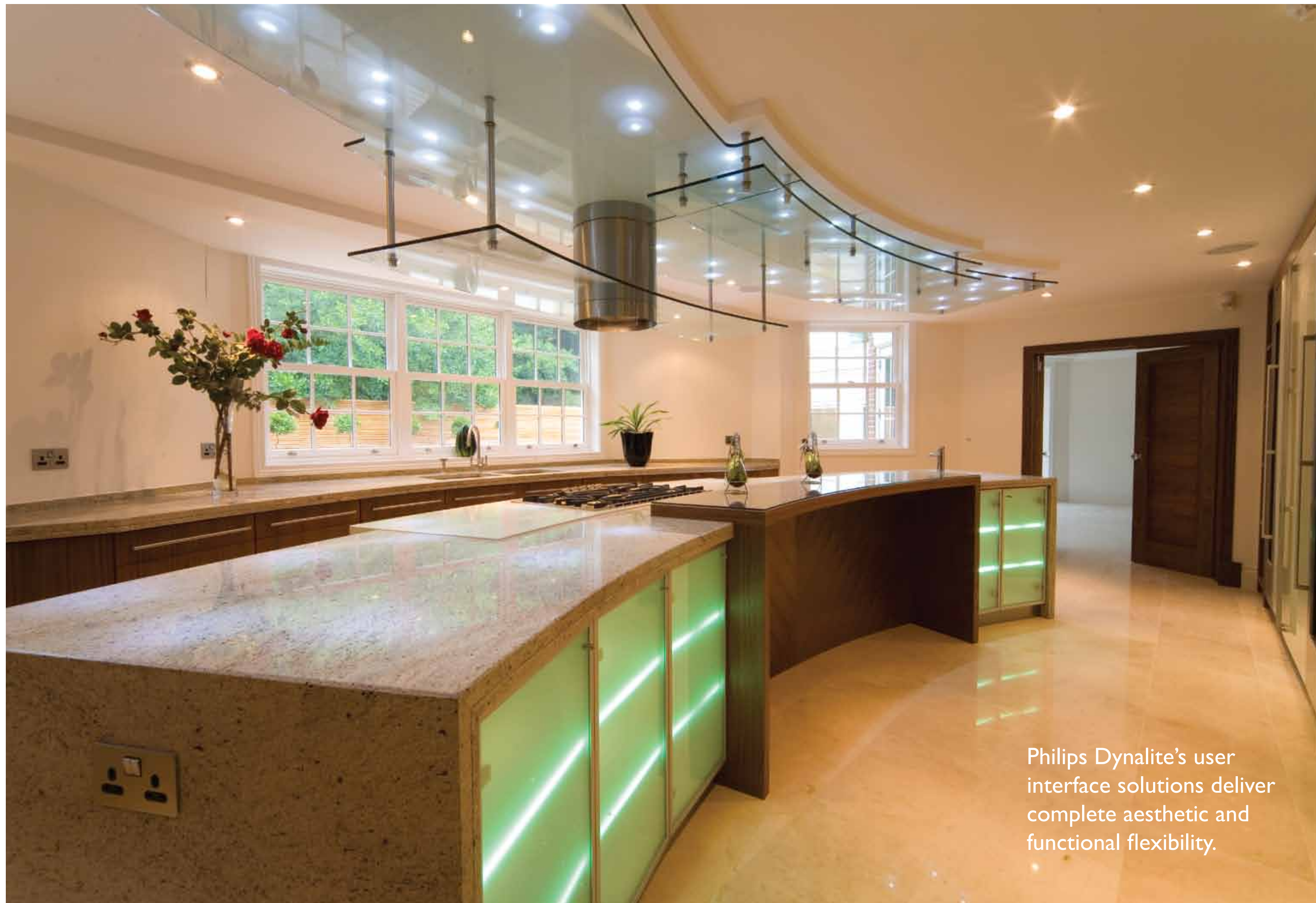


Individual lighting levels can easily be adjusted then saved to a button to be recalled at a later date.

Each button can be custom labelled for ease-of-use.

Connect to the Philips Dynalite Ethernet gateway in the control system.





Philips Dynalite's user interface solutions deliver complete aesthetic and functional flexibility.

Philips Lighting
Philips Centre
Guildford Business Park
Guildford
GU2 8XH
Tel: +44 (0) 148 329 8950
Email: lcuk.sales@philips.com

www.philips.co.uk/controls

For more information, please contact

