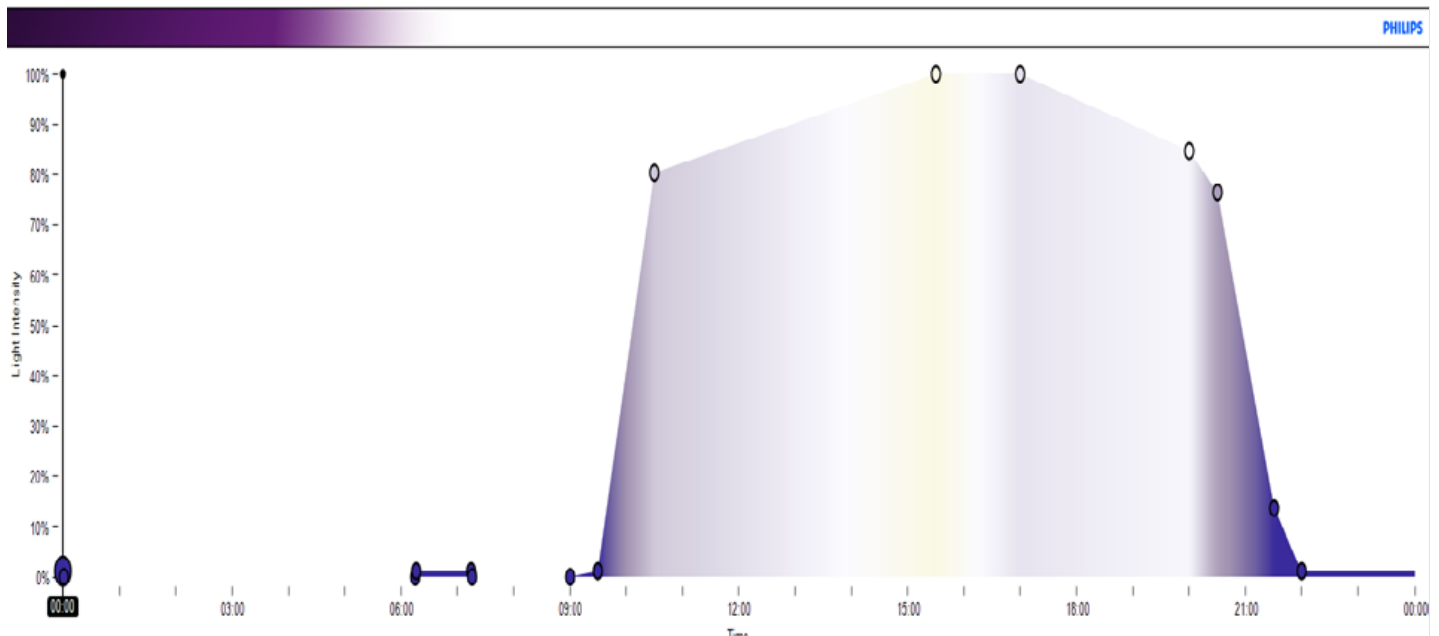


By Michiel Schmeitz-The Netherlands

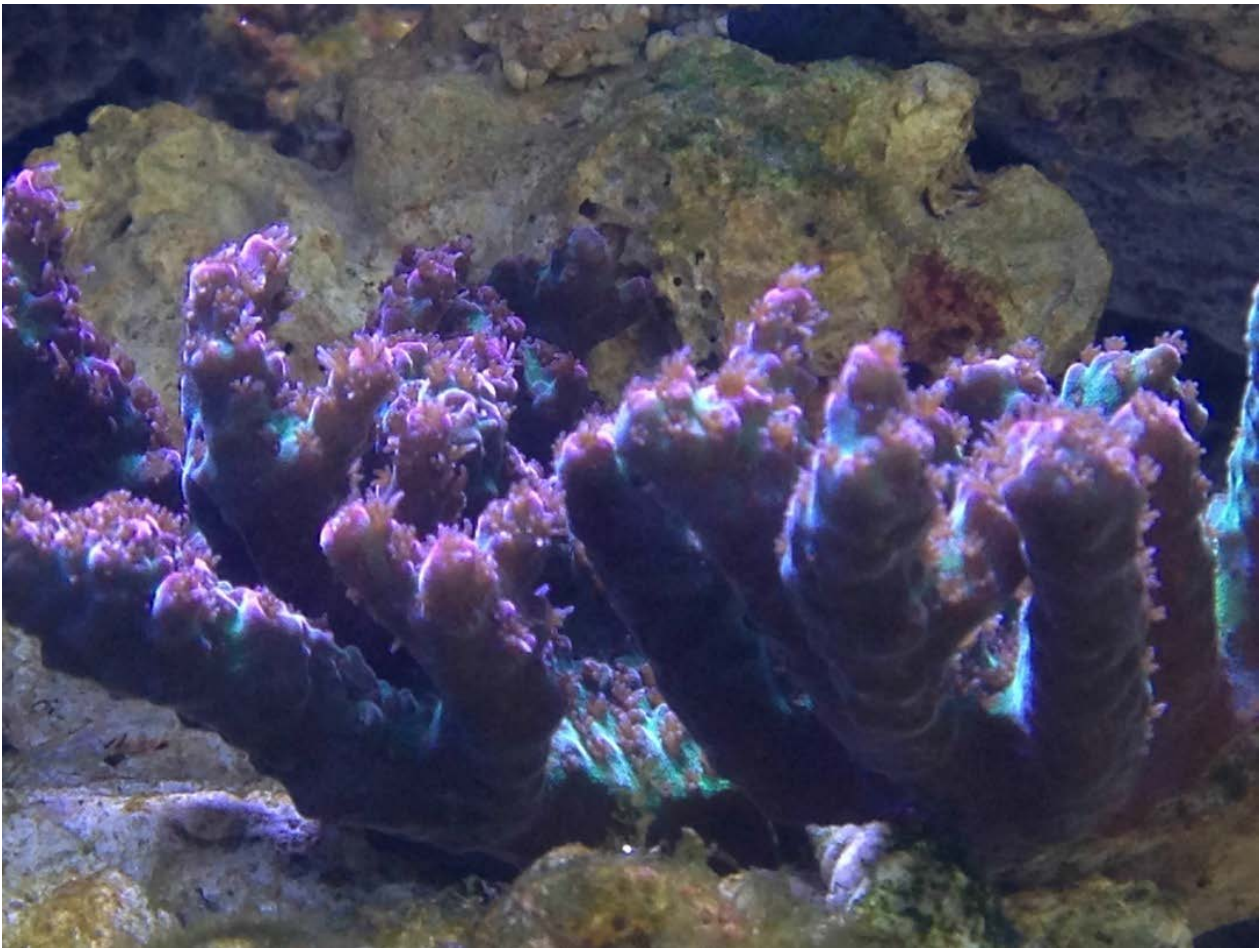
On Saturday 9 April I replaced the existing 4x 54 W T5 luminaire I had with a Philips CoralCare lamp. The installation of the luminaire was very straightforward. In my case it was very easy to 'hang' the lamp because I use a closed aquarium, with metal fittings in the cover, on which I was able to suspend the steel cables with ease.

The saltwater aquarium is 125 cm wide and 70 cm deep. The water level is approximately 70 cm and the net volume of the entire installation is approximately 650 liters. I illuminate the aquarium with 1 CoralCare luminaire that is suspended approximately 30 cm above the surface of the water. The reason I chose CoralCare is quite simply because the system is easy to use and robust. I have already seen a lot of LED luminaires for above saltwater aquariums. However, I wasn't convinced that many of these luminaires would work for long above an aquarium, amongst other things because of the mechanical components like fans or because you can see the printed circuit board components through the fan openings.

My lighting is switched on from approximately 9.30 hours to 22.15 hours. Before and after these times I also use 'moon lighting'.



My experience so far (18-05-2016) is very good. I feel the colors of the corals have become deeper and more intense and that all of the corals have growth tips, even the SPS corals that are on the bottom. Growth tips were, of course, also visible with the T5 lighting but I think these have become larger since I have had the Philips CoralCare lighting above the aquarium. On the next page there are a number of photographs.



As already mentioned in this review, my aquarium runs on one Philips CoralCare luminaire. The intensity of the luminaire is set to 100% for a proportion of the day. I can *just* manage with this light setting. I do think, however, that if I start keeping more SPS corals and the reef gets bigger, I will have problems because the corners of the tank are really quite dark. But if you're starting off with an aquarium of this size I would recommend anyone to start with one luminaire. In the future you could always expand the installation by adding an extra CoralCare luminaire if you want to.



The software for programming the interface is very user-friendly and it is very easy to set a 'beautiful' light. Compared with other LED luminaires this really is a strong point in favor of the CoralCare lamp. In terms of light reflection, this luminaire is very good. There isn't a 'disco' on the floor of the aquarium and yet there is a gentle shimmering of the light, which just makes it appear more natural. Alongside the energy efficiency, this is another plus point compared with T5.

