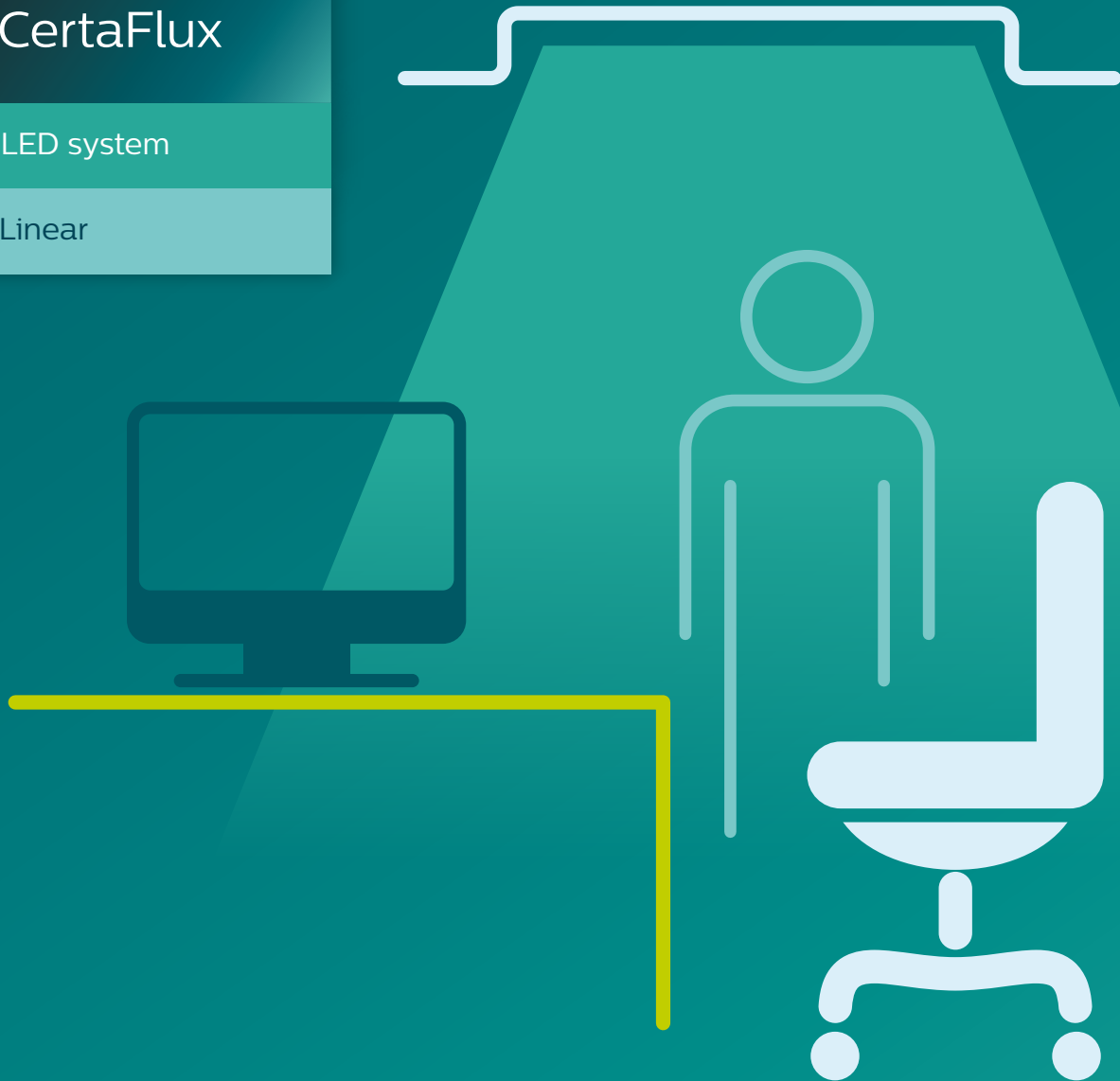


PHILIPS

CertaFlux

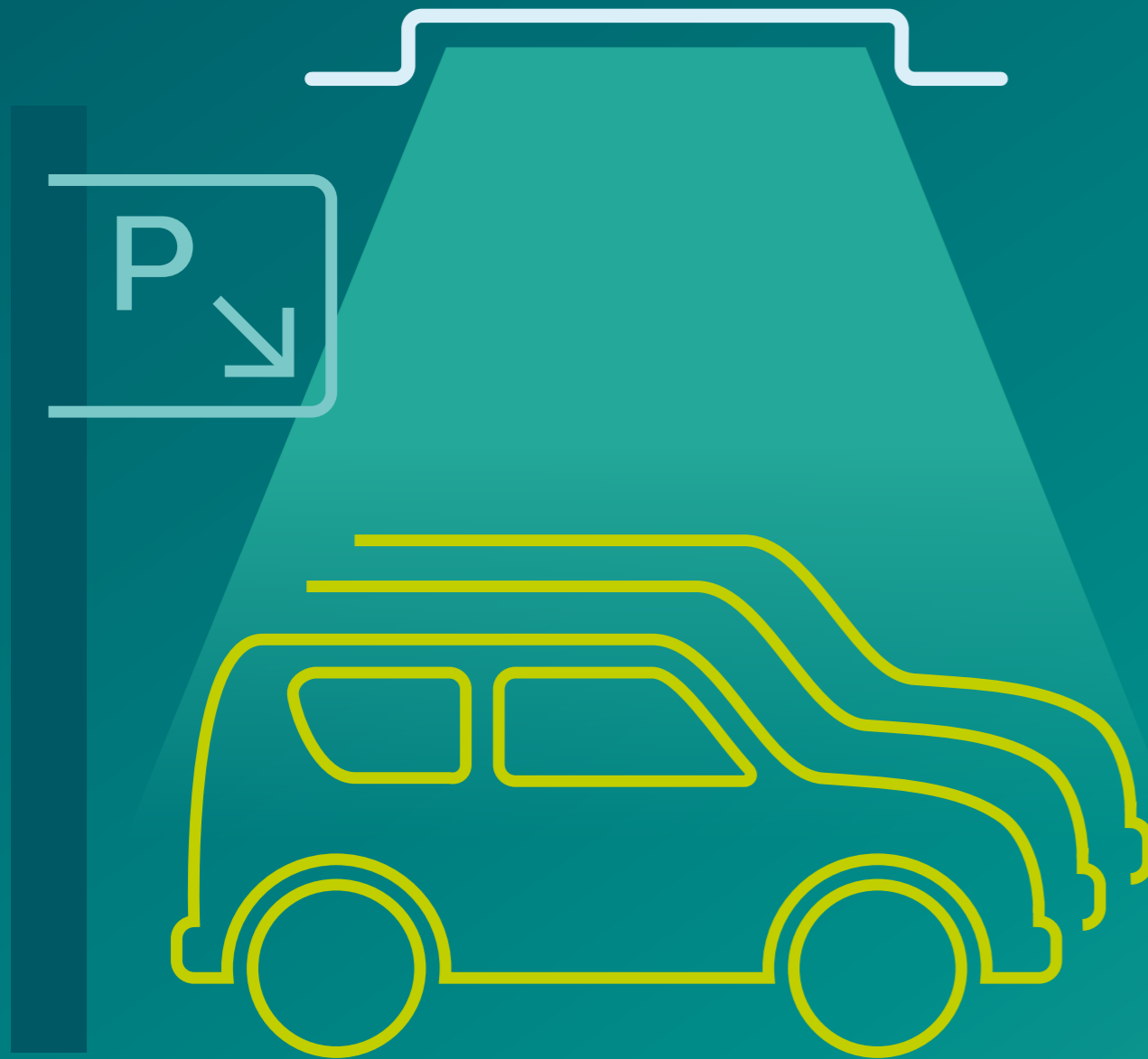
LED system

Linear



Sometimes good
can be **great**

CertaFlux LED systems are designed to enable
linear LED luminaires for high volume markets



The performance of **Linear LED lighting** has surpassed that of **traditional fluorescent solutions** and it keeps getting better. While our Fortimo range continually extends the performance boundaries for high-end applications, the CertaFlux range focuses on offering the most cost-efficient solution for linear LED lighting in general applications.

“

Fulfilling the needs of basic lighting requirements.”

Good quality of light

Show true to life colors

Philips CertaFlux LED modules are specified with a minimum Color Rendering Index (CRI) of 80, which is good for general linear lighting applications. The CRI is a measure of a light source's ability to faithfully reproduce colors compared to how a natural light source shows the colors.

Minimizing differences in color

CertaFlux Linear LED systems have a Standard Deviation of Color Matching (SDCM) of 4, thereby minimizing differences in color that are visible to the human eye and maintaining the right balance between cost and performance. SDCM relates to color shift and is measured in 'MacAdam Ellipses'. The lower the number of MacAdam ellipses, the better the color quality.

A choice of color temperatures

CertaFlux LED systems are available in three color temperatures, offering a choice of warm white (around 3000 K), neutral white (around 4000 K) and day light (around 6500 K) to suit most applications. Note that the CertaFlux LLS EaseSelect integrated driver/LED modules have a neutral white color temperature.

“

The most versatile and cost-efficient solution for linear LED lighting.”

Cost effective systems

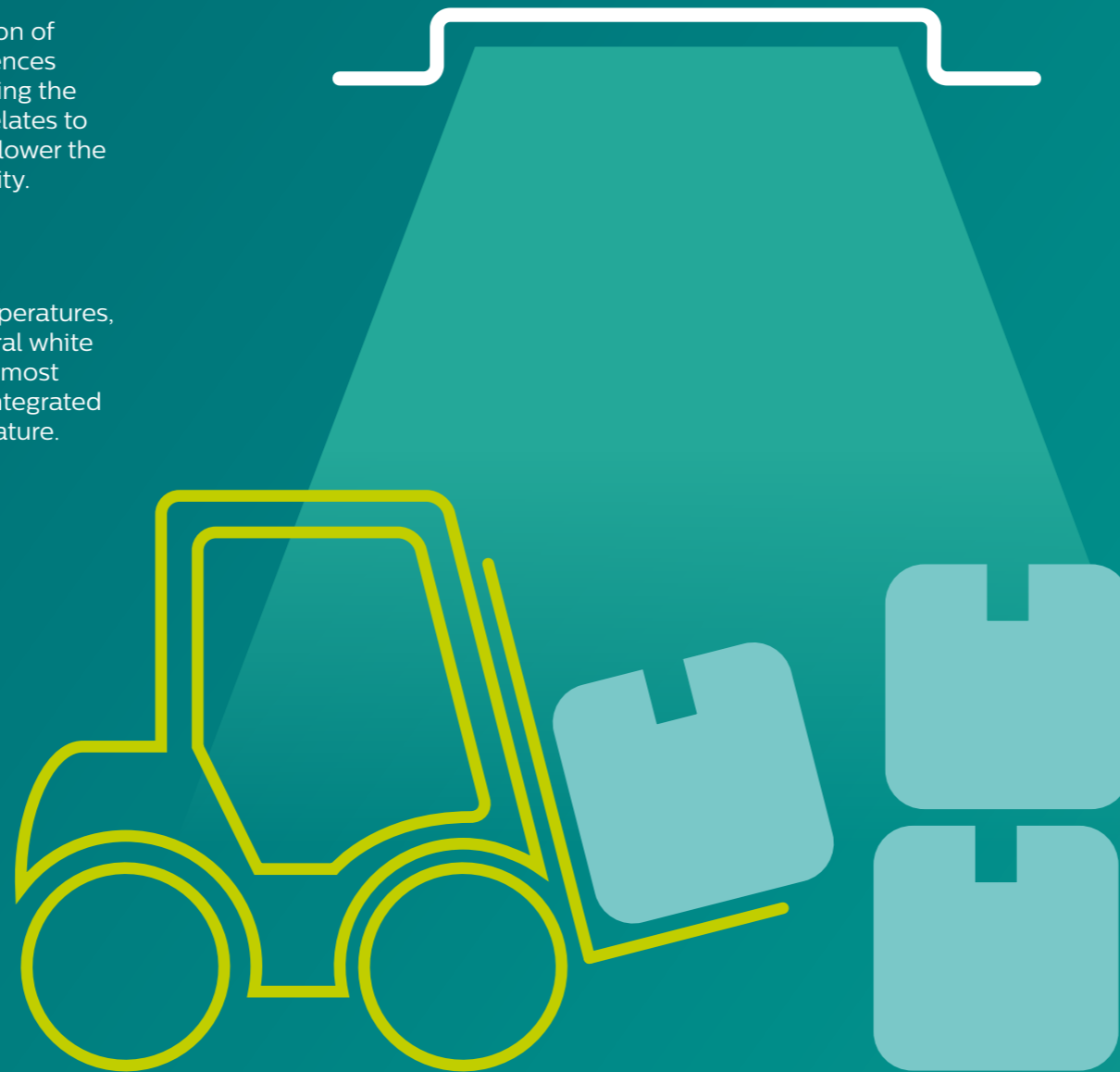
CertaDrive linear LED drivers

We believe that by designing the LED module and driver to work effectively with each other, the system is very reliable. The non-isolated fixed current CertaDrive linear LED driver portfolio is specifically designed to match the CertaFlux LED Strips. The current and voltage of these drivers are optimized to operate with CertaFlux LED systems, and enable lumen packages to be selected for high-volume commodity products.

And if your application requires different settings than usually found in basic applications, our Xitanium non-isolated fixed output window drivers provide an ideal solution.

Two-box and integrated solutions

There are two ranges: a linear LED strip system that is designed for use with CertaDrive and Xitanium drivers, and the new CertaFlux LLS EaseSelect, which is the first linear LED module with an integrated driver. In line with all EaseSelect products, these LLS modules simplify the design and assembly of luminaires and still deliver good light quality with no visible flicker or stroboscopic effects.



CertaFlux LED Strip system



“Achieve a luminaire sales price that **hits that sweet spot in market pricing.**”

CertaFlux LED Strip

CertaFlux LED Strip systems deliver the performance, functionality and quality of light needed to satisfy the requirements of luminaires in basic lighting applications. The range has solution for different types of luminaires, including recessed and surface-mounted luminaires for offices, and trunking and profile luminaires for retail, waterproof and industrial applications. A linear LED system comprises one or more CertaFlux LED Strip module plus a non-isolated fixed current driver.

Product information (HV)

Commercial name	Order code EOC
CertaFlux LED Strip 1 ft 775 lm 830 HV2	87186964 79414 00
CertaFlux LED Strip 1 ft 775 lm 840 HV2	87186964 79438 00
CertaFlux LED Strip 1 ft 775 lm 865 HV2	87186964 79452 00
CertaFlux LED Strip 1 ft 1100 lm 830 HV2	87186964 79476 00
CertaFlux LED Strip 1 ft 1100 lm 840 HV2	87186964 79551 00
CertaFlux LED Strip 1 ft 1100 lm 865 HV2	87186964 79575 00
CertaFlux LED Strip 2 ft 1550 lm 830 HV2	87186964 79599 00
CertaFlux LED Strip 2 ft 1550 lm 840 HV2	87186964 79612 00
CertaFlux LED Strip 2 ft 1550 lm 865 HV2	87186964 79636 00
CertaFlux LED Strip 2 ft 2200 lm 830 HV2	87186964 79650 00
CertaFlux LED Strip 2 ft 2200 lm 840 HV2	87186964 79674 00
CertaFlux LED Strip 2 ft 2200 lm 865 HV2	87186964 79698 00

Non-isolated LED system (HV)

Driver type	Commercial name	LED Strip	LED Strip	LED Strip	LED Strip	Order code
		1 ft 775 lm	1 ft 1100 lm	2 ft 1550 lm	2 ft 2200 lm	
		1R systems	1R systems	1R systems	1R systems	EOC
Fixed output	Xitanium 75W 0.12-0.4A 220V 230V	6 - 10	5 - 7	3 - 5	3	87186964 40025 00
	Xitanium 36W 0.12-0.4A 115V 230V	4 - 5	3	2	-	87186964 40001 00
Fixed current	CertaDrive 60W 360mA 170V 230V	7*, 8*	5, 6	4*	3	87186964 91782 00
	CertaDrive 40W 360mA 110V 230V	5*	4	-	2	87186964 91768 00
	CertaDrive 30W 330mA 82V 230V	4	3**	2	-	87186964 91744 00

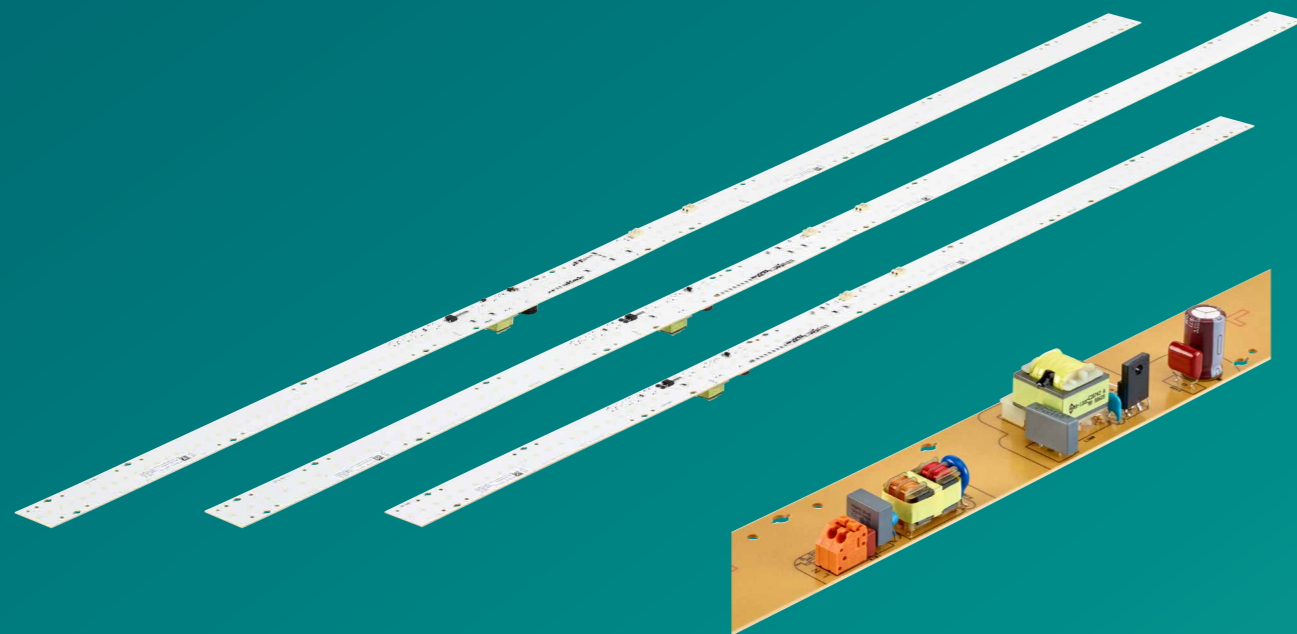
Note: The overview shows system configurations of the CertaFlux LED Strip modules achieving nominal lumen output. Configurations marked* will give a slightly higher-than-typical flux, configurations marked** will give a slightly lower-than-typical flux. Please consult the online Easy Design-in Tool for all possible system configuration, available via philips.com/technology.

Key features of CertaFlux LED Strip:

- One-foot and two-foot lengths
- LED module efficiency up to 127 lm/W
- Light output 775, 1100, 1550 and 2200 lumen
- Lifetime >50,000 hours
- Color Rendering Index (CRI) >80
- Color consistency 4 SDCM
- Choice of color temperatures (3000, 4000 and 6500 K)
- Operating temperature range -40°C to +85°C
- Push-in connectors enabling automated wiring
- Three-year system warranty



“The first linear LED system with **matching light engines and drivers in one**”



CertaFlux LLS EaseSelect

CertaFlux LLS EaseSelect is Philips' first linear driver-on-board solution, light engines and corresponding drivers in one. Having an integrated driver not only simplifies design-in and part exchange, but it also speeds up the overall assembly process. The net results for you as OEM are lower manufacturing costs.

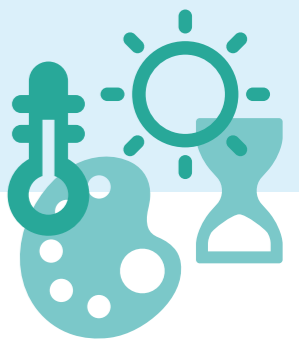
The design is ideal for OEMs with focus on the entry/trade segment of the market, especially for waterproof applications such as carparks, storage rooms and industrial applications. CertaFlux LLS EaseSelect has a light output of 4500lm or 6750lm, 1150mm (2 x 575mm) and 1450mm (2 x 725mm) non-isolated design, with integrated single current driver. The dimensions have been optimized to minimize dark ends in the luminaire.

Product information (HV)

Commercial name	Order code EOC
CertaFlux LLS ES 1150 mm 4500 lm 840 HV1	929000 9997 06
CertaFlux LLS ES 1450 mm 4500 lm 840 HV1	929000 9998 06
CertaFlux LLS ES 1450 mm 6750l m 840 HV1	929000 9538 06

Key features of CertaFlux LLS EaseSelect:

- 1150 mm and 1450 mm lengths
- LED system efficiency up to 123 lm/W
- Light output 4500 and 6750 lumen
- Life-time >50,000 hours
- Color Rendering Index (CRI) >80
- Color consistency 4 SDCM
- Neutral white color temperatures (4000 K)
- Operating temperature range -40°C to +85°C
- Push-in connectors enabling automated wiring
- Three-year system warranty



“CertaFlux LLS EaseSelect will **enable the lowest integral cost at luminaire level.**”

