



## Quick Installation Guide

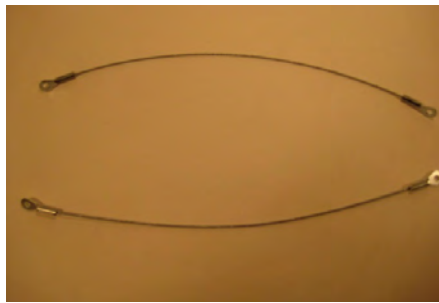
### Philips EvoKit Earthquake cable accessory Part #502435

Please note: These instructions are for use only with Philips Evokit models, 2x4 and 2x2. Always remove power before performing any work. Please note that these instructions are for use in conjunction with the general "Installation Guide" for Philips Evokit LED, 2x2 and 2x4.

The earthquake cable kit consists of (2) cables (see pictures A and B below) which are to be attached to the existing troffer installed in the T-Bar ceiling as well as the Evokit LED panel. These cables are to be attached with #8 x 1/2 inch Pan Head Self-Drilling Screws (these four screws are not included in the kit).



Picture A



Picture B

Follow the installation instructions supplied with Evokit. You can install the optional earthquake cables after installation of the two "Side Panels". Each cable is to be attached to Evokit LED panel and also the existing troffer (one on each side). The Evokit has (2) holes at each end of the LED panel for securing the cables with the self-drilling screws. The earthquake cables should be attached to the LED panel prior to installation in the T-bar ceiling.

1.) Attach one end of each cable to pre-punched holes on the main LED panel with #8 self-drilling screws. Attach to the back-side (driver/label side) of the LED panel. (see pictures C,D,E,F)

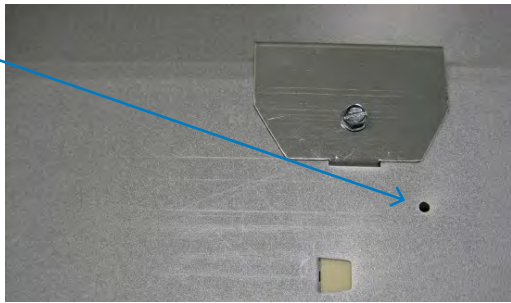
**PHILIPS**



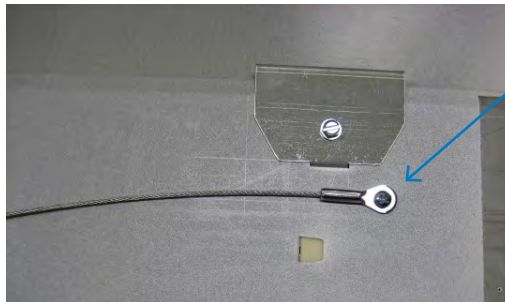
Picture C. Existing hole in LED Panel



Picture D. Cable attached



Picture E. Mounting hole in LED panel



Picture F. Cable attached

2.) After both cables have been attached to the Evokit LED panel, the LED panel can be installed in the T-bar ceiling. Follow instructions "Installation LED Panel" in the installation guide.

3.) 3. Once the LED panel is installed in the troffer, the other end of the earthquake cables can be attached to the existing troffer. Attach one end of each cable to the existing troffer (one on each side) with a self-drilling #8 screw. See pictures G and H below.



Picture G. Existing troffer



Picture H. Cable attached with self-drilling screw

After both cables are attached to the Evokit LED panel and the existing troffer (picture I. below), follow instructions in the installation guide to complete installation.



Picture G. Existing troffer



© 2014 Koninklijke Philips N.V.  
 All rights reserved.  
 Printed in USA 12/13  
 www.philips.com

Philips Lighting  
 North America Corporation  
 200 Franklin Square Drive  
 Somerset, NJ 08873  
 Phone: 855-486-2216

Philips Lighting  
 281 Hillmount Road  
 Markham, Ontario  
 Canada L6C 2S3  
 1-800-555-0050