

PHILIPS Day-Brite CFI

Recessed

ClearAppeal 1x4

with tunable white
technology
3000/3400/3700 lm



Project: _____
Location: _____
Cat.No: _____
Type: _____
Lamps: _____ Qty: _____
Notes: _____

Philips Day-Brite / Philips CFI ClearAppeal LED recessed architectural provides excellent visual comfort. Its modern architectural styling complements any space. Tunable white technology allows color temperature flexibility between 2700K and 6500K CCT.

Ordering guide

Example: 1CAG30L8TW-4-DS-UNV-DTW

Width	Family	Ceiling Type	Lumens	Color	Length	Center Diffuser	Voltage	Driver	Options
1	CA			8TW	4	DS	UNV	DTW	
1 1'	CA ClearAppeal	G Grid	30L 3000 nominal delivered lumens 34L 3400 nominal delivered lumens 37L 3700 nominal delivered lumens	8TW 80 CRI, 2700K thru 6500K white light tuning	4 4'	DS Diffuse (smooth)	UNV Universal Voltage, 120-277 volt	DTW Dual channel tunable white	EMLED Integral emergency, 1100lm nominal, 6500K color circuit only F1/D 3/8" twin flex, 3 wire 18 gauge 6' for dimmable luminaires F2/7W 3/8" single flex, 7 wire 18 gauge 6' for dimmable luminaires GLR Fusing, fast blow

Accessories (order separately)

- **FMA14** – 1'x4' "F" mounting frame for NEMA "F" mounting



1CA ClearAppeal LED recessed 1x4

with tunable white technology, 3000/3400/3700 lumens

Application

- Modern architectural styling to complement any space.
- Smooth brightness across the face of the luminaire prevents glare and provides excellent visual comfort.
- Directs a controlled amount of light to higher angles to eliminate "cave effect" without creating glare.
- Ideal for modern offices, schools and retail environments.
- Excellent luminaire efficacy provides significant energy savings.
- High CRI source provides excellent color rendering.
- Grid and Flange models available.

Construction/Finish

- One piece die-formed embossed steel housing provides added rigidity, resists damage during shipment/handling.
- Captive hinged door frame assembly for maintenance accessibility.
- T-bar grid clips are built into luminaire ends for quick and easy installation, no extra parts required.
- Suitable for end-to-end mounting.
- End K.O.s for thru wiring or conduit entry in shallow plenums.
- Captive hinged door frame assembly for maintenance accessibility.

Electrical

- Must order compatible Philips Lighting control system.
- Driver and LED boards are easily accessible from below. LED boards are individually replaceable if required.

- Five-year luminaire limited warranty including LED boards and driver.
- High efficiency LEDs have 60,000 hour L70 rated life (defined as 70% lumen maintenance.)
- cETLus listed to UL standards, suitable for damp locations.

Enclosure

- Single piece thermo formed acrylic lens with smooth center diffuser (DS).

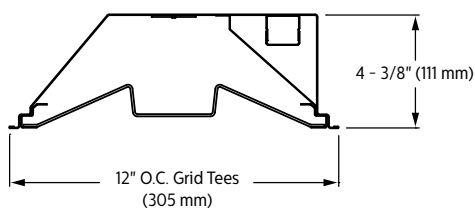
General Notes

- All options factory installed.
- All accessories are field installed.
- Many luminaire components, such as reflectors, refractors, lenses, sockets, lampholders, and LEDs are made from various types of plastics which can be adversely affected by airborne contaminants. If sulfur based chemicals, petroleum based products, cleaning solutions, or other contaminants are expected in the intended area of use, consult factory for compatibility.

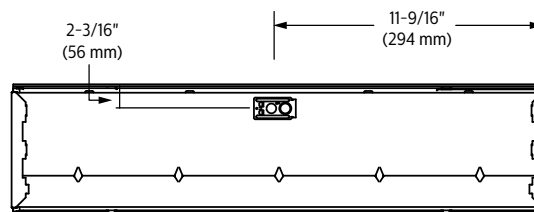
Controls

- Luminaires are not sold individually and are only compatible with load controllers, sensors, user interfaces and front end software from Philips. Philips controls platform allows for more flexibility with customized lighting scenes and behaviors as well as scalability of the tunable white solution into a more extensive lighting network management system. To learn more about the Philips controls solution please visit our tunable white page or <http://www.lightingproducts.philips.com/our-brands/philips-controls/dynalite.html>

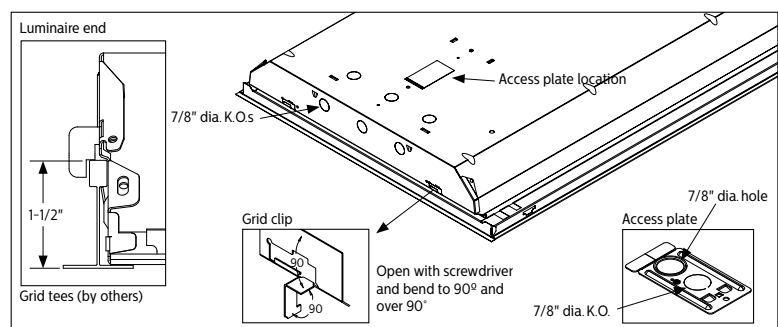
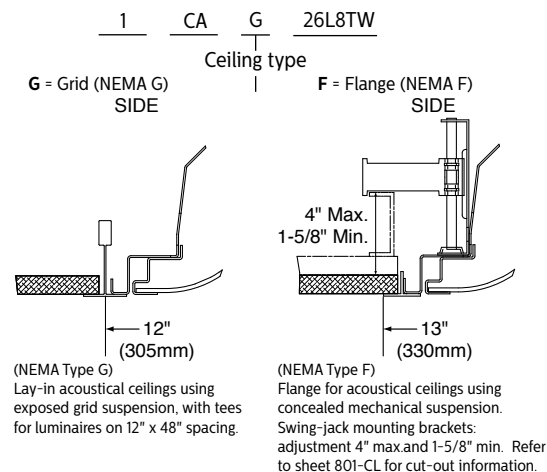
Dimensions



*EMLED option is 5-5/8" (143mm) deep



Ceiling configuration



1CA ClearAppeal LED recessed 1x4

with tunable white technology, 3000/3400/3700 lumens

Electrical Specifications

Input Voltage	120V			277V		
Nominal CCT	2700K			2700K		
Nominal Lumens	3000lm	3400lm	3700lm	3000lm	3400lm	3700lm
Commissioned State						
Power (W)	36.5	44.3	50.0	36.3	44.0	49.5
Current (A)	0.31	0.38	0.42	0.16	0.18	0.2
Power Factor	0.98	0.99	0.99	0.85	0.88	0.90
THD (%)	15	14	12	18	17	16
Off State Power (W)	0.6	0.6	0.6	0.9	0.9	0.9
Non-Commissioned State						
Power (W)	67.0	83.0	92.0	66.0	82.0	91.0
Current (A)	0.56	0.70	0.78	0.26	0.32	0.35

Photometry

1x4 ClearAppeal LED recessed with tunable white, 3000 nominal delivered lumens, 2700K CCT

LER – 86

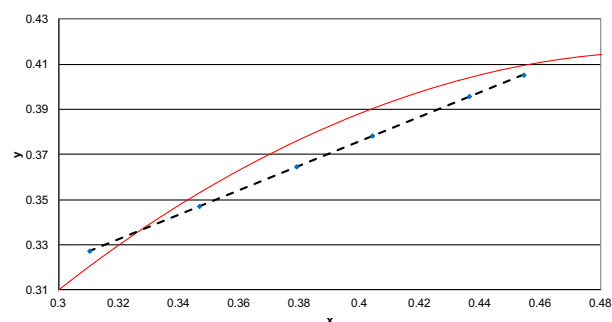
Catalog No.		Candlepower				Light Distribution			Average Luminance			
Test No.	36262	Angle	End	45	Cross	Degrees	Lumens	% Luminaire	Angle	End	45°	Cross
S/MH	1.2	0	1140	1140	1140	0-30	866	28.1	45	3408	3463	3481
Lamp Type	LED	5	1123	1133	1137	0-40	1402	45.4	55	3217	3337	3350
Lumens	3084	15	1075	1080	1084	0-60	2447	79.3	65	2957	3210	3035
Input Watts	36	25	981	983	986	0-90	3084	100.0	75	2505	2643	2365
CCT	2700K	35	853	856	857	0-180	3084	100.0	85	1711	1459	1396
		45	703	715	718							
		55	538	559	561							
		65	365	396	374							
		75	189	200	179							
		85	44	37	36							
Comparative yearly lighting energy cost per 1000 lumens – \$2.79 based on 3000 hrs. and \$.08 pwr KWH. The photometric results were obtained in the Philips Day-Brite laboratory which is NVLAP accredited by the National Institute of Standards and Technology. Photometric values based on test performed in compliance with LM-79.		Coefficients of Utilization				EFFECTIVE FLOOR CAVITY REFLECTANCE 20 PER (pfc=0.20)						
		pcc	80			70			50			
		pwr	70	50	30	70	50	30	50	30		
		RCR										
		0	118	118	118	115	115	115	111	111		
		1	109	104	100	106	102	97	97	93		
		2	98	91	83	95	89	82	84	80		
		3	90	80	71	88	78	70	75	68		
		4	82	70	61	80	68	60	67	59		
		5	76	63	54	73	61	54	59	52		
		6	69	56	47	68	56	46	54	46		
		7	65	52	42	63	51	41	48	41		
		8	60	46	39	58	46	38	45	38		
		9	56	42	34	55	42	34	41	34		
		10	53	40	32	52	39	32	38	30		

1CA ClearAppeal LED recessed 1x4

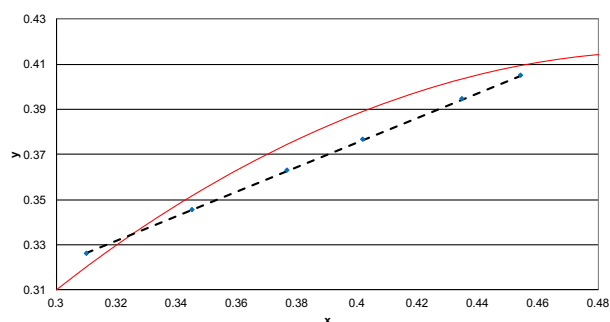
with tunable white technology, 3000/3400/3700 lumens

Color information

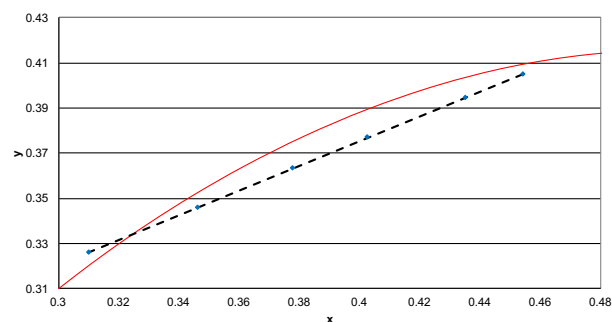
1x4 ClearAppeal 3000lm	2700K	3000K	3500K	4000K	5000K	6500K
Flux	3110	3140	3119	3159	3055	3019
Power	35.9	37.6	35.4	34.4	32.5	29.6
Efficacy	86.7	83.5	88.1	91.8	93.8	101.9
CCT	2736	2941	3421	3944	4913	6638
CRI	83	84	86	87	86	82
R9	17	22	30	34	31	11
x	0.4544	0.4362	0.4041	0.3791	0.3469	0.3105
y	0.4053	0.3956	0.3782	0.3647	0.3472	0.3273
Duv	-0.0015	-0.0033	-0.0053	-0.0054	-0.0030	0.0035



1x4 ClearAppeal 3400lm	2700K	3000K	3500K	4000K	5000K	6500K
Flux	3717	3791	3826	3923	3843	3839
Power	43.6	45.0	42.7	42.1	40.1	38.0
Efficacy	85.3	84.2	89.6	93.1	95.7	101.2
CCT	2737	2959	3465	4006	4979	6673
CRI	83	84	86	87	86	82
R9	16	22	31	34	31	11
x	0.4542	0.4347	0.4016	0.3765	0.3451	0.3101
y	0.4051	0.3946	0.3767	0.3629	0.3457	0.3263
Duv	-0.0016	-0.0035	-0.0055	-0.0055	-0.0030	0.0032



1x4 ClearAppeal 3700lm	2700K	3000K	3500K	4000K	5000K	6500K
Flux	4129	4206	4227	4313	4194	4140
Power	49.2	50.2	47.0	46.1	43.7	41.3
Efficacy	83.9	83.8	89.9	93.5	96.1	100.3
CCT	2738	2955	3446	3977	4941	6679
CRI	82	84	86	87	86	82
R9	16	22	30	34	31	11
x	0.4540	0.4350	0.4025	0.3776	0.3461	0.3100
y	0.4049	0.3947	0.3771	0.3634	0.3460	0.3261
Duv	-0.0016	-0.0035	-0.0055	-0.0055	-0.0032	0.0031



© 2016 Philips Lighting Holding B.V. All rights reserved.
Philips reserves the right to make changes in specifications and/or to discontinue any product at any time without notice or obligation and will not be liable for any consequences resulting from the use of this publication.
philips.com/luminaires



Philips Lighting North America Corporation
200 Franklin Square Drive, Somerset, NJ 08873
Tel. 855-486-2216

Philips Lighting Canada Ltd.
281 Hillmount Rd, Markham, ON, Canada L6C 2S3
Tel. 800-668-9008